

# OPERATION AND PARTS MANUAL



 **WHITEMAN** SERIES

**MODEL**

**WBH-21 EFP  
POWER BUGGY**

**(B&S VANGUARD 18 HP PROPANE DRIVEN ELECTRIC START)**

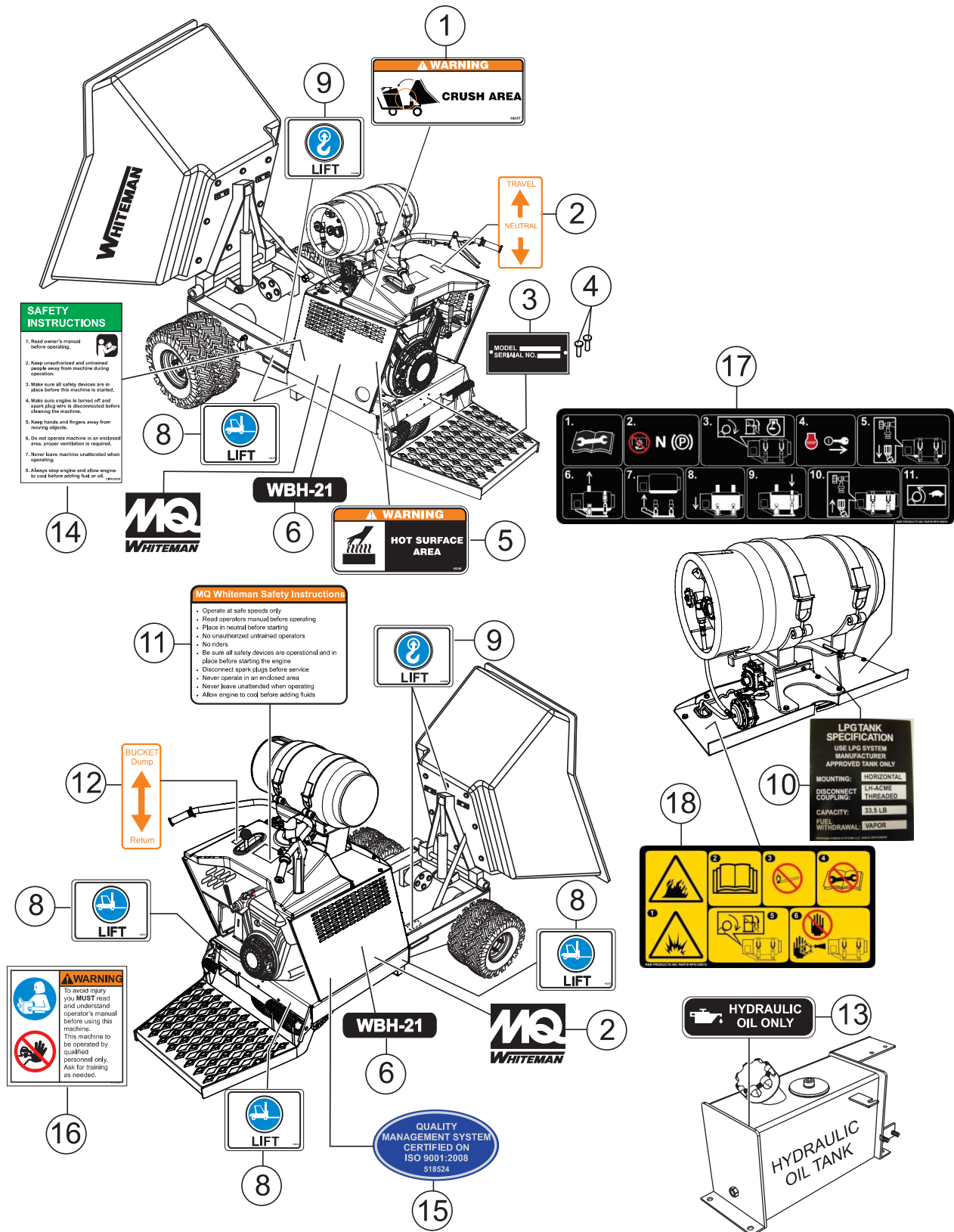
Revision #1 (09/13/19)

To find the latest revision of this  
publication, visit our website at:  
[www.multiquip.com](http://www.multiquip.com)



**THIS MANUAL MUST ACCOMPANY THE EQUIPMENT AT ALL TIMES.**

# NAMEPLATE AND DECALS ASSY.

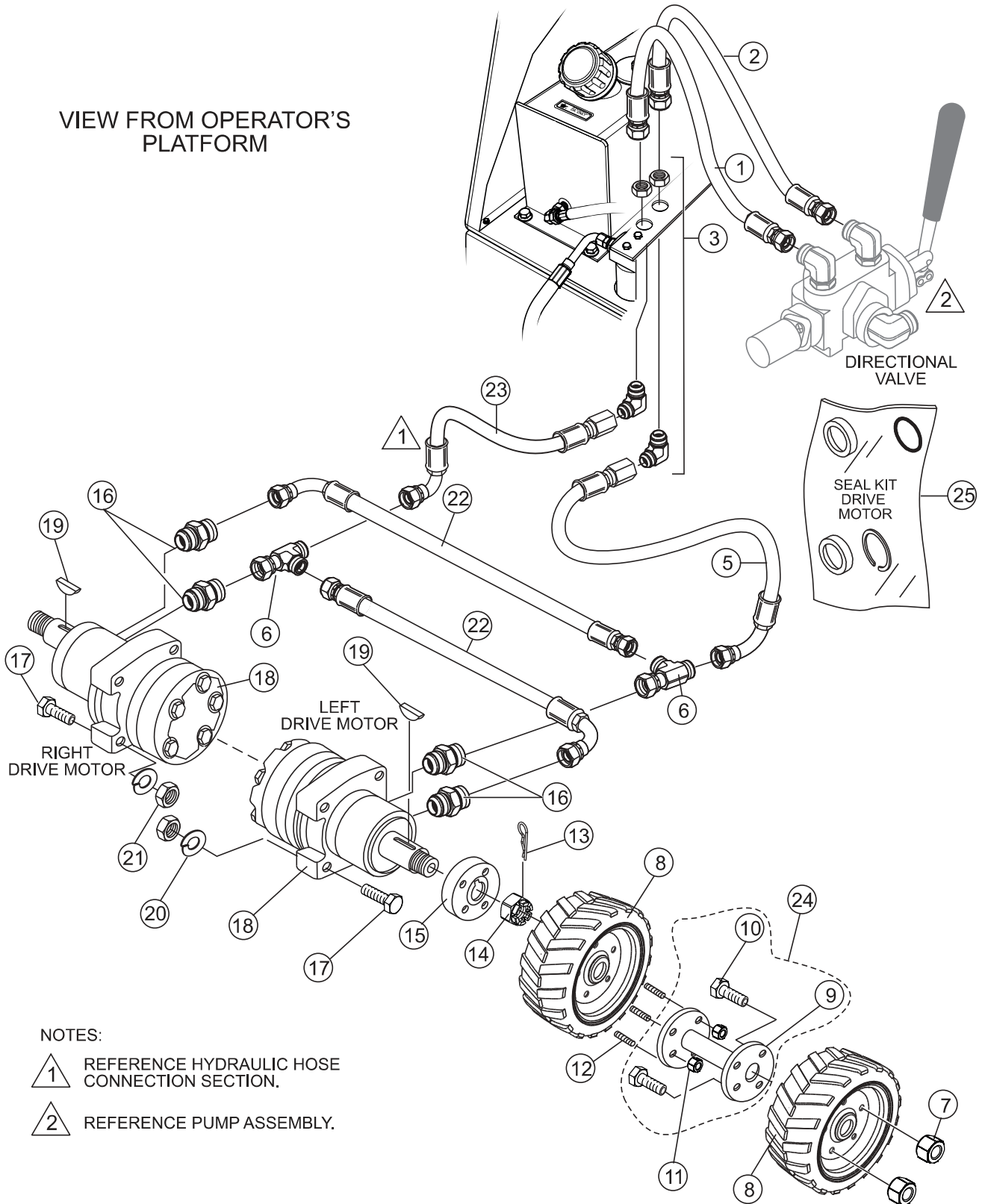


## NAMEPLATE AND DECALS ASSY.

<u>NO.</u>	<u>PART NO.</u>	<u>PART NAME</u>	<u>QTY.</u>	<u>REMARKS</u>
1	18247	DECAL, CRUSH WARNING	1	
2		DECAL, TRAVEL LEVER DIRECTION.....	1.....	MOLDED INTO FUEL TANK COVER
3		PLATE, SERIAL NUMBER.....	1.....	CONTACT MQ PARTS DEPT.
4	491757	RIVET, I.D. PLATE	2	
5	18248	DECAL, HOT SURFACE WARNING	1	
6	804592	DECAL, WBH-21	2	
7	18252	DECAL, MQ WHITEMAN	2	
8	18245	DECAL, FORKLIFT LIFTING	6	
9	513608	DECAL, LIFTING HOOK	3	
10	RPS150028	PLATE, PROPANE TANK, 33.5LBS	1	
11		DECAL, WHITEMAN SAFETY INSTRUCTIONS.....	1.....	MOLDED INTO FUEL TANK COVER
12		DECAL, BUCKET DUMP LEVER.....	1.....	MOLDED INTO FUEL TANK COVER
13	EM985	DECAL, HYDRAULIC OIL	1	
14	520935	DECAL, SAFETY INSTRUCTIONS	1	
15	518524	DECAL, ISO 9001:2008	1	
16	35137	DECAL, READ MANUAL, ASK FOR TRAINING	1	
17	RPS150029	DECAL, INSTRUCTION, PROPANE	1	
18	RPS150030	DECAL, SAFETY, PROPANE	1	

# HYDRAULIC DRIVE ASSY.

VIEW FROM OPERATOR'S PLATFORM



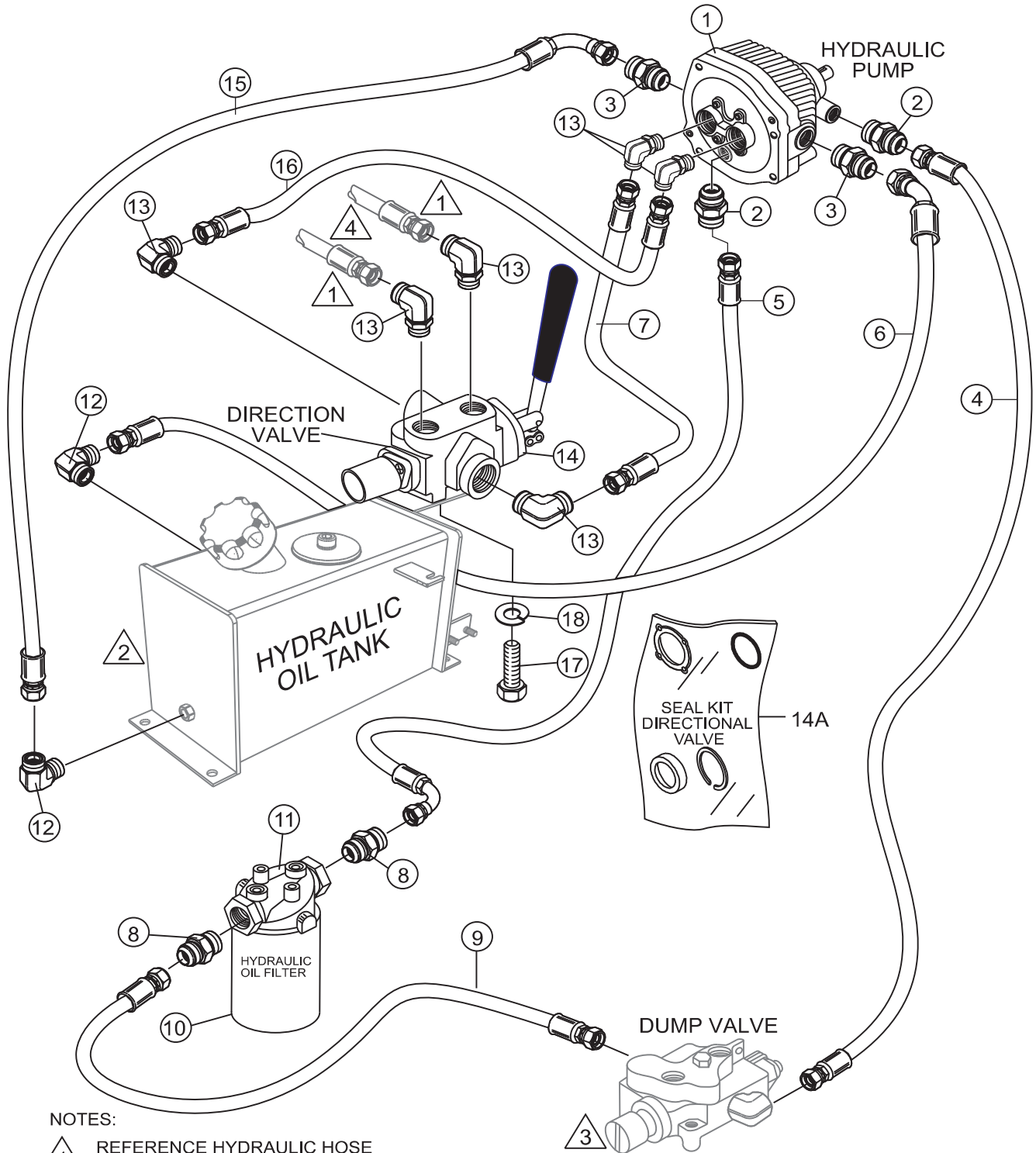
NOTES:

- 1 REFERENCE HYDRAULIC HOSE CONNECTION SECTION.
- 2 REFERENCE PUMP ASSEMBLY.

## HYDRAULIC DRIVE ASSY.

<u>NO.</u>	<u>PART NO.</u>	<u>PART NAME</u>	<u>QTY.</u>	<u>REMARKS</u>
1	18265M	HOSE, DIRECTION VALVE .....	1.....	RIGHT-DRIVE MOTOR
2	18264M	HOSE, DIRECTION VALVE .....	1.....	LEFT-DRIVE MOTOR
3	511810	ADAPTER, ELBOW	2	
5	18276M	HOSE, LH HYDRAULIC MOTOR	1	
6	512189	ADAPTER, TEE CONNECTOR	2	
7	492527	NUT, HEX 1/2"-20	8	
8	18029F	WHEEL, DRIVE ASSY. FRONT .....	4.....	FOAM FILLED TIRE
9\$	511692	FLANGE, HUB	2	
10\$	18237	LUG BOLT/HUB FLANGE	8	
11	492584	NUT, HEX 1/2"-13 NYLON.....	8.....	REPLACES P/N 6109160
12	18190	SCREW, HUB STUD 1/2"-20 X 2-3/4"	8	
13	491689	KEY, COTTER 1/8" X 2	2	
14	PT018038	NUT, CASTLE 1-1/8"-18	2	
15	803281	HUB, DRIVE (INDEXED)	2	
16	3365	ADAPTER, STRAIGHT	5	
17	505718	SCREW, HHC 1/2"-13 X 2-3/4"	8	
18	18011	MOTOR, HYDRAULIC DRIVE	2	
19	3311	KEY, 7 MM X 8 MM X 1-1/4" .....	2.....	REPLACES P/N PE449105
20	6109180	WASHER, LOCK 1/2"	8	
21	6109160	NUT, HEX 1/2"-13	8	
22	18027	HOSE, DRIVER MOTOR CROSSOVER	2	
23	18275M	HOSE, RH HYDRAULIC MOTOR	1	
24	516528	FLANGE HUB ASSY.....	1.....	INCLUDES ITEMS W/\$
25	18011SK	SEAL KIT, DRIVE MOTOR	1	

# HYDRAULIC PUMP ASSY.



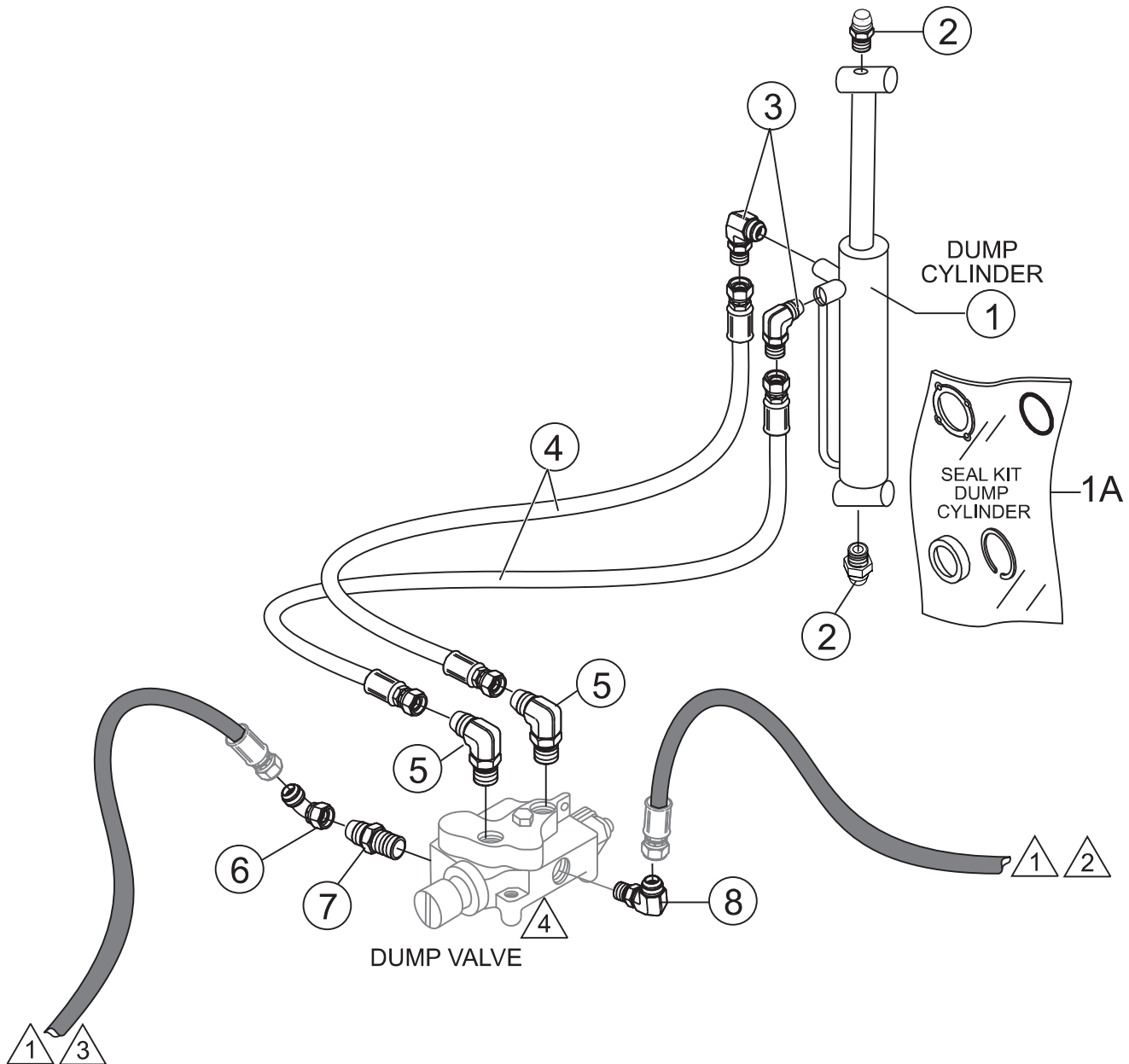
**NOTES:**

- 1** REFERENCE HYDRAULIC HOSE CONNECTION SECTION.
- 2** REFERENCE HYDRAULIC OIL TANK ASSEMBLY.
- 3** REFERENCE DUMP VALVE ASSEMBLY.
- 4** REFERENCE HYDRAULIC DRIVE ASSEMBLY ITEMS 1 AND 2 FOR HOSE PART NUMBERS





## HYDRAULIC PUMP ASSY.

<u>NO.</u>	<u>PART NO.</u>	<u>PART NAME</u>	<u>QTY.</u>	<u>REMARKS</u>
1	18035	PUMP, HYDRAULIC	1	
2	511808	ADAPTER, STRAIGHT	2	
3	3365	ADAPTER, STRAIGHT	6	
4	18256M	HOSE, PUMP TO DUMP VALVE	1	
5	18258M	HOSE, FILTER TO PUMP	1	
6	18261M	HOSE, PUMP TO TANK	1	
7	18265M	HOSE, PUMP TO DIRECTION VALVE .....	1.....	REPLACES P/N 18263M
8	512190	ADAPTER, STRAIGHT	2	
9	18257M	HOSE, FILTER TO DUMP VALVE	1	
10	508667	FILTER, HYDRAULIC	1	
11	508664	HYDRAULIC FILTER HEAD	1	
12	511799	ADAPTER, ELBOW	2	
13	3322	ADAPTER, ELBOW	6	
14	18058	VALVE, DIRECTION CONTROL, TRAVEL	1	
14A	18058SK	SEAL KIT, DIRECTIONAL VALVE	1	
15	18262M	HOSE, TANK TO PUMP	1	
16	18266M	HOSE, PUMP TO DIRECTION VALVE	1	
17	EM963055	HEX HEAD CAP SCREW .....	2.....	REPLACES P/N 492373
18	0166 A	WASHER, LOCK 3/8" .....	2.....	REPLACES P/N 492624

# HYDRAULIC DUMP ASSY.



NOTES:

-  REFERENCE HYDRAULIC HOSE CONNECTION SECTION.
-  REFERENCE HYDRAULIC PUMP ASSEMBLY ITEM 4 FOR HOSE PART NUMBER.
-  REFERENCE HYDRAULIC PUMP ASSEMBLY ITEM 9 FOR HOSE PART NUMBER.
-  REFERENCE HANDLE/FOOT DUMP CONTROLS ASSEMBLY ITEM 8 FOR DUMP VALVE PART NUMBER.

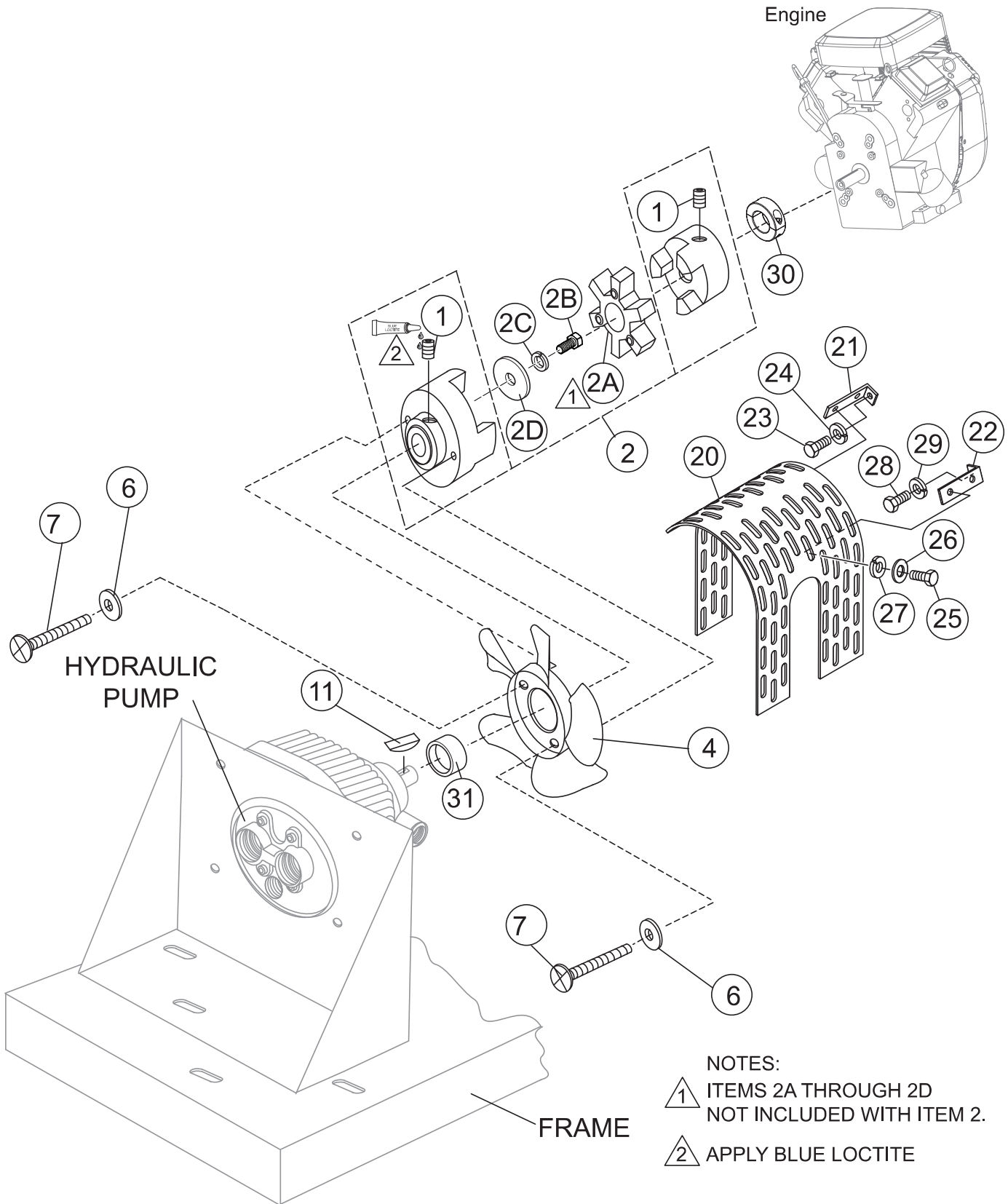


## HYDRAULIC DUMP ASSY.

---

<u>NO.</u>	<u>PART NO.</u>	<u>PART NAME</u>	<u>QTY.</u>	<u>REMARKS</u>
1	803747	CYLINDER, HYDRAULIC DUMP	1	
1A	18022SK	SEAL KIT, DUMP CYLINDER	1	
2	EM916019	ZERK FITTING .....	2.....	REPLACES P/N 491705
3	511803	ADAPTER, ELBOW	2	
4	18020	HOSE, DUMP VALVE TO HYD. PISTON	2	
5	511804	ADAPTER, ELBOW MALE	2	
6	512234	ADAPTER, ELBOW	1	
7	511806	ADAPTER, STRAIGHT	1	
8	506191	ADAPTER, ELBOW	1	

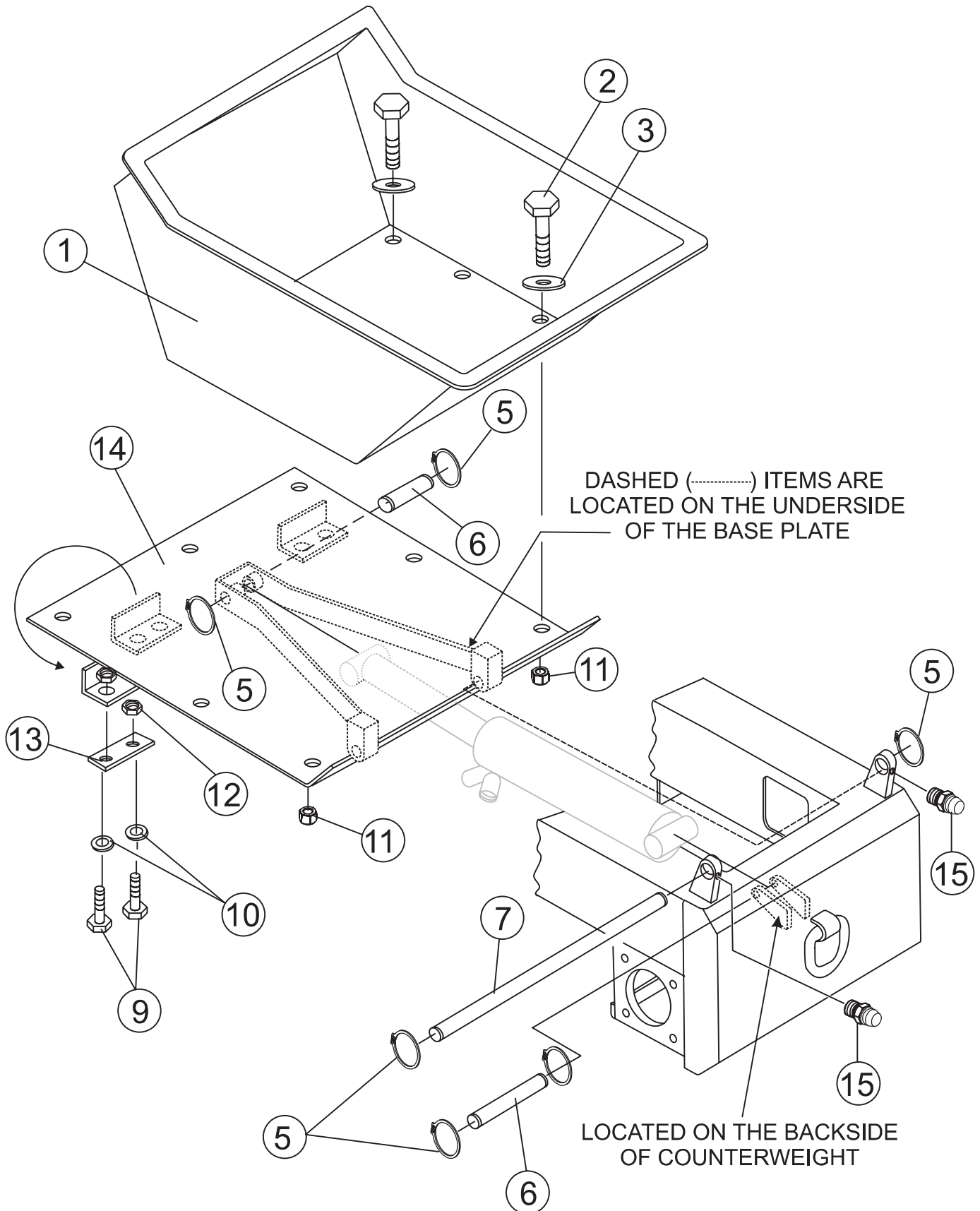
# PUMP AND COUPLING ASSY.



## PUMP AND COUPLING ASSY.

<u>NO.</u>	<u>PART NO.</u>	<u>PART NAME</u>	<u>QTY.</u>	<u>REMARKS</u>
1#	492472	SCREW, ALLEN HEAD 3/8"-16 X 3/4"	2	
2	18051	COUPLING, ENGINE SHAFT.....	1	INCLUDES ITEMS W/#
2A	18051RS	SPIDER, URETHANE	1	
2B	492356	SCREW, 1/4" X 3/4" GRD 5	1	
2C	2101402	WASHER, LOCK 1/4" .....	1	REPLACES P/N 492622
2D	EM923057	WASHER, FLAT 3/4" .....	1	REPLACES P/N 504451
4	18112	FAN	1	
6	EM923057	WASHER, FLAT 1/4" .....	2	REPLACES P/N 492596
7	1579	SCREW, HHC 1/4"-20 X 1/2" .....	2	REPLACES P/N 492355
11	506250	KEY, WOODRUFF	1	
20	512494	FAN GUARD	1	
21	512493	BRACKET, LONG	1	
22	513737	BRACKET, SHORT	1	
23	EM963055	SCREW, HEX HEAD CAP 3/8" NC X 3/4" GRD 5..	1	REPLACES P/N 492373
24	0166A	WASHER, LOCK 3/8" .....	1	REPLACES P/N 492624
25	512367	BOLT, C/H 3/16" NC X 1/2" GRD 2	4	
26	492595	WASHER, FLAT 3/16"	4	
27	3103160	WASHER, LOCK 3/16" .....	4	REPLACES P/N 492621
28	492438	BOLT, C/H 5/16" NF X 1" GRD 5	1	
29	EM923343	WASHER, LOCK 5/16" .....	1	REPLACES P/N 492623
30	802442	LOCK COLLAR	1	
31	803009	BUSHING, HYDRAULIC PUMP	1	

# TUB ASSY.

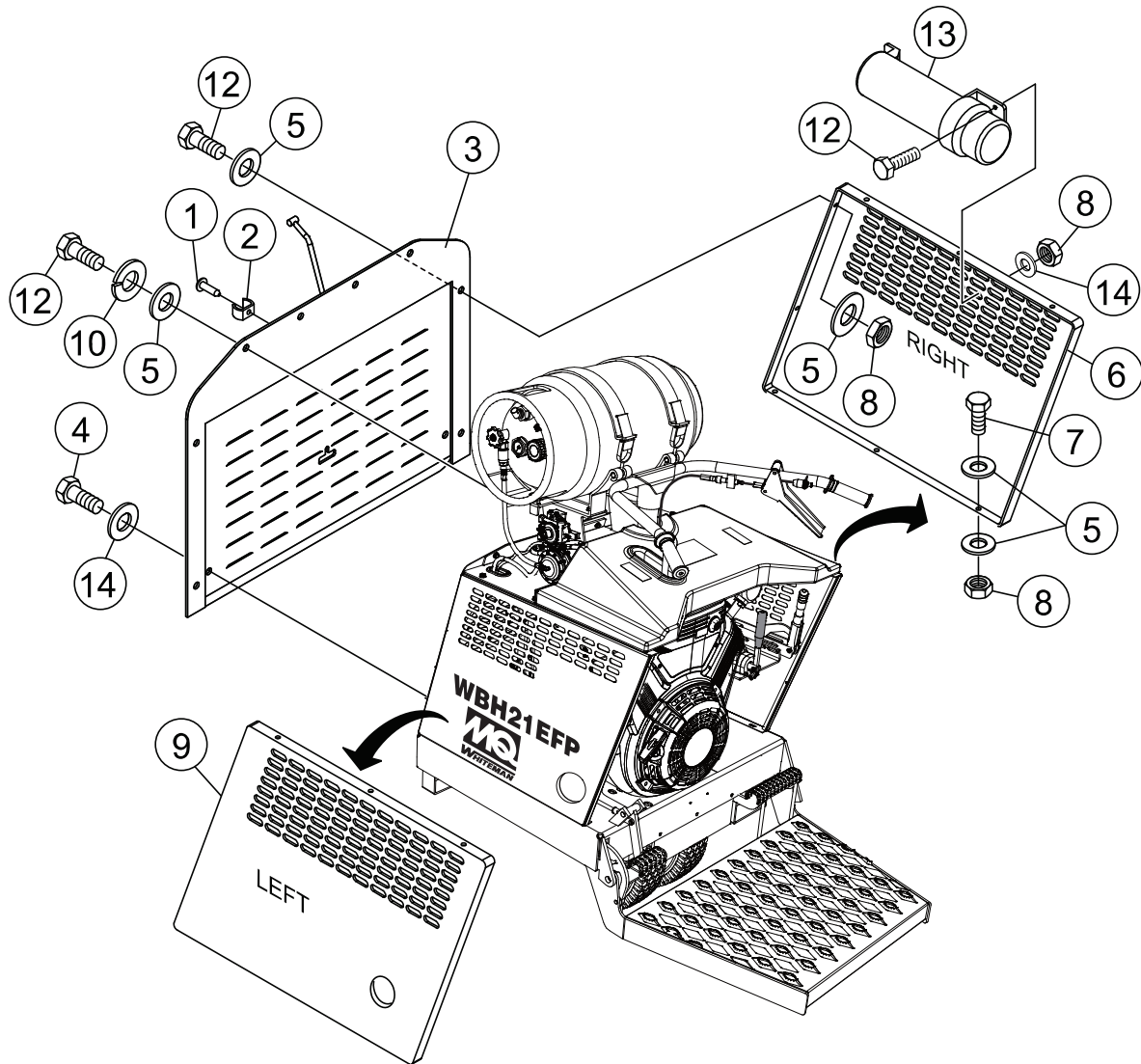


## TUB ASSY.

---

<u>NO.</u>	<u>PART NO.</u>	<u>PART NAME</u>	<u>QTY.</u>	<u>REMARKS</u>
1	804580	TUB, PLASTIC 21 CU. FT.	1	
2	EM963057	SCREW, HHC 3/8"-16 X 1-1/2" .....	9.....	REPLACES P/N 492313
3	512193	WASHER, FLAT 3/8"	9	
5	490957	RING, SNAP	6	
6	18130	PIN, HYD. PISTON CROSS	2	
7	18129	PIN, TUB FRAME CROSS	1	
9	0202	SCREW, HHC 5/16"-18 X 1 ZINC.....	4.....	REPLACES P/N 492364
10	EM923023	WASHER, FLAT 9.5 X 22.2.....	8.....	REPLACES P/N 492597
11	EM969013	NUT, NYLOC 3/4"-16 .....	9.....	REPLACES P/N 492583
12	2105164	NUT, NYLOC 5/16"-18 .....	4.....	REPLACES P/N 492582
13	512279	SUPPORT, BUM STOP	2	
14	804586	FRAME, TUB MOUNT, 21 CU. FT.	1	
15	EM916019	GREASE FITTING .....	2.....	REPLACES P/N 491705

# PANEL ASSY.

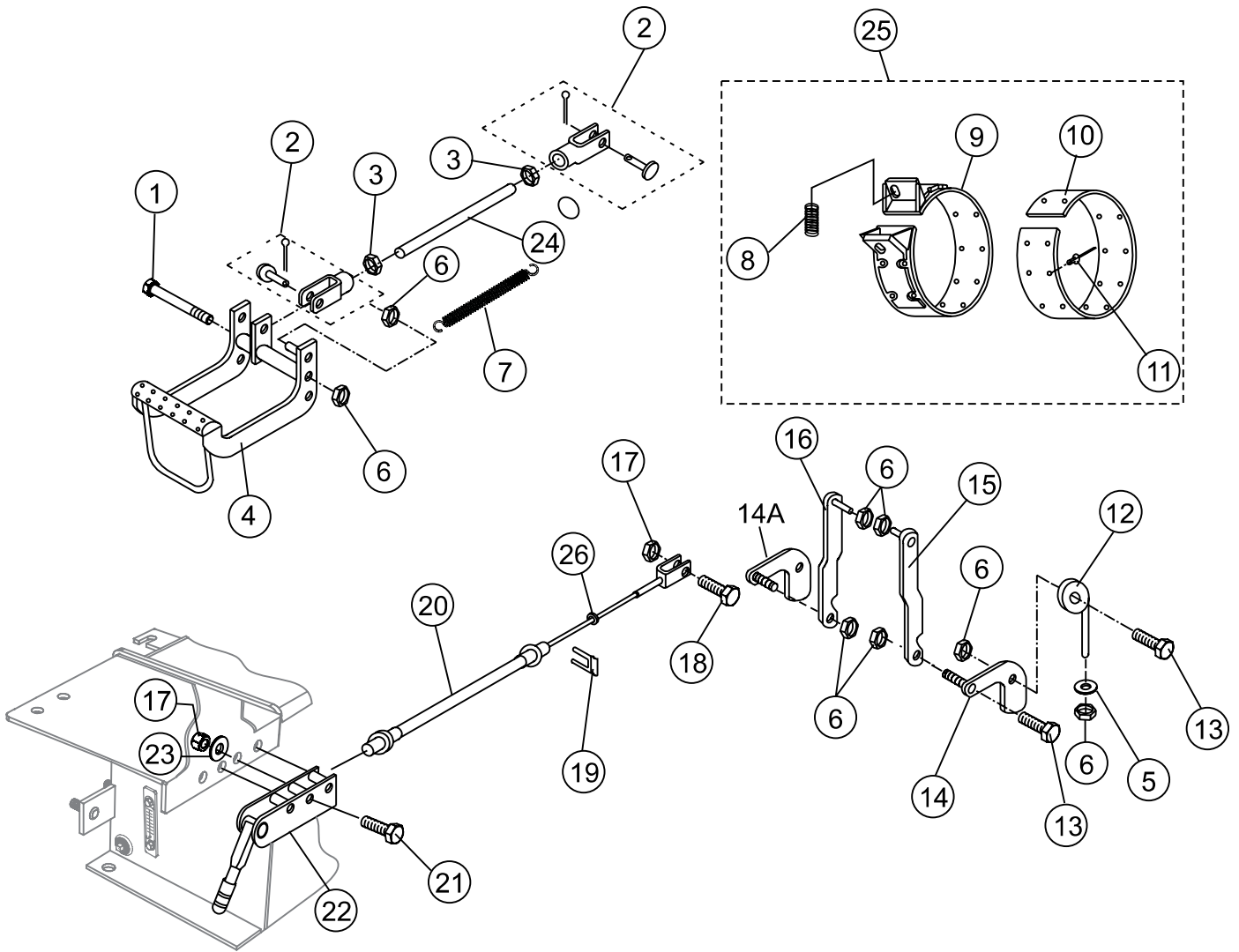


## PANEL ASSY.

---

<u>NO.</u>	<u>PART NO.</u>	<u>PART NAME</u>	<u>QTY.</u>	<u>REMARKS</u>
1	503978	POP RIVET AM-56	1	
2	511474	FASTENER, ACCESS DOOR	1	
3	18008	DOOR, ACCESS	1	
4	1579	SCREW, 1/4" NC X 1/2" GRD 5.....	2.....	REPLACES P/N 492355
5	EM923023	WASHER, FLAT 3/8".....	32.....	REPLACES P/N 492597
6	18141	COVER, RIGHT/SIDE ENGINE	1	
7	0202	SCREW, HHC 5/16"-18 X 1".....	6.....	REPLACES P/N 492364
8	2105164	NUT, NYLOC 5/16"-18.....	9.....	REPLACES P/N 492582
9	521389	COVER, LEFT/SIDE ENGINE	1	
10	EM923343	WASHER, LOCK 5/16".....	4.....	REPLACES P/N 492623
12	492363	SCREW, HHC 5/16" NC X 3/4" GRD 5	6	
13	23297	MANUAL HOLDER	1	
14	EM923057	WASHER, 1/4".....	4.....	REPLACES P/N 492596

# BRAKE ASSY.

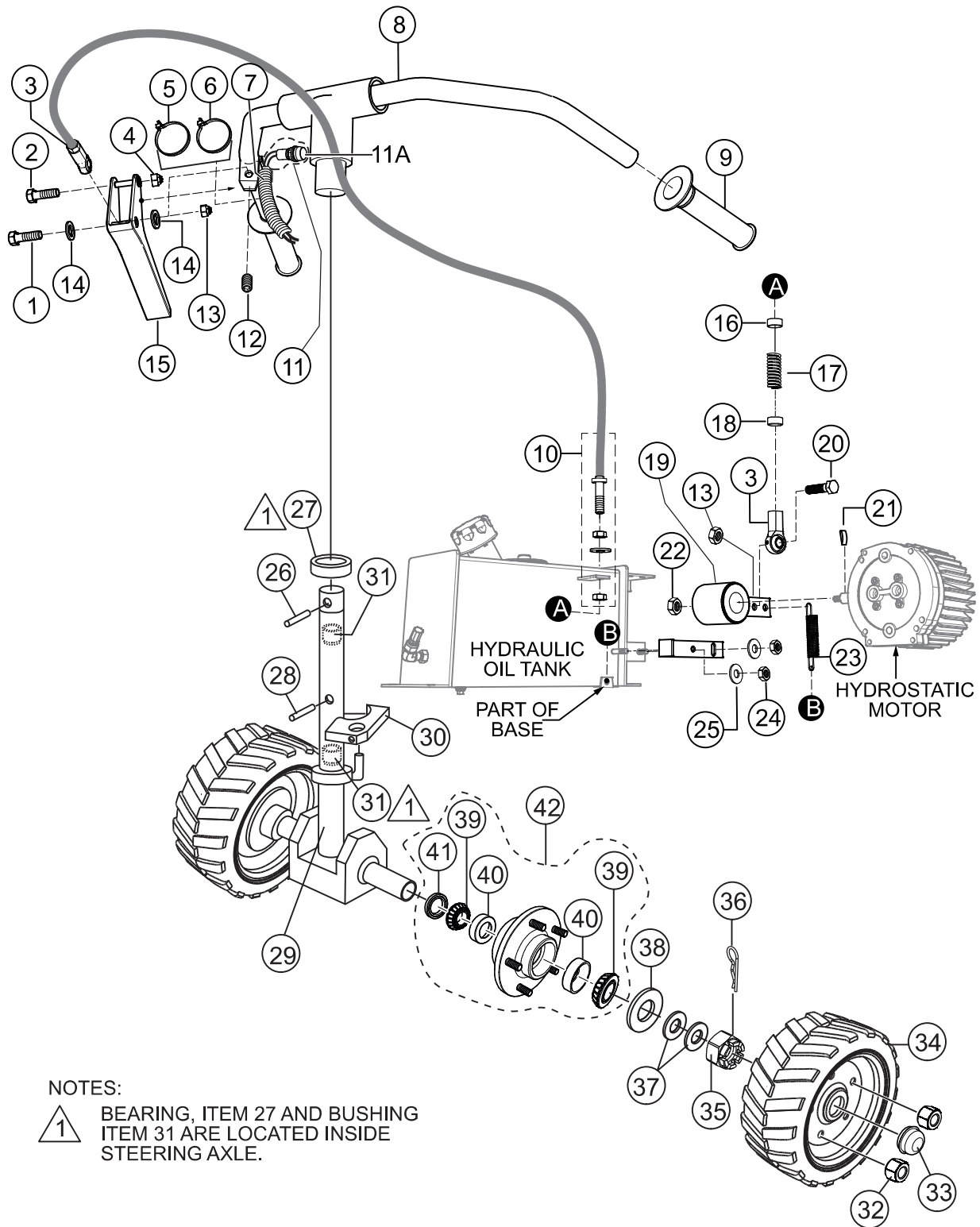




## BRAKE ASSY.

<u>NO.</u>	<u>PART NO.</u>	<u>PART NAME</u>	<u>QTY.</u>	<u>REMARKS</u>
1	511762	SCREW, HHC 1/2"-13 X 8"	1	
2	511698	CLEVIS, ASSY. BRAKE	2	
3	EM492574	NUT, HEX 3/8"-24 .....	2.....	REPLACES P/N 492574
4	18111	PEDAL, BRAKE	1	
5	EM621	WASHER, FLAT 1/2" .....	1.....	REPLACES P/N 621
6	492584	NUT, NYLOC 1/2"-13	10	
7	18167	SPRING, BRAKE PEDAL	1	
8\$	18307	SPRING, BRAKE	2	
9\$		BAND, BRAKE .....	2.....	NOT SOLD SEPARATELY
10\$		LINING, BRAKE .....	2.....	NOT SOLD SEPARATELY
11\$	512881	RIVET, BRAKE LINING.....	56.....	REPLACES P/N 503723
12	18303	SHAFT, CRANK PIN	2	
13	492395	SCREW, HHC 1/2"-13 X 1-3/4"	1	
14	512602	BRAKE LEVER, LEFT	1	
14A	512601	BRAKE LEVER, RIGHT	1	
15	18032	LINKAGE, RIGHT BRAKE	1	
16	18314	LINKAGE, LEFT BRAKE	1	
17	2105164	NUT, NYLOC 5/16" .....	3.....	REPLACES P/N 492582
18	492303	SCREW, HHC 5/16" NC X 1-1/4" GRD 5.....	1.....	REPLACES P/N 492365
19	505170	CLIP, PARK CABLE	1	
20	18016	CABLE, PARK BRAKE	1	
21	2105162	SCREW, HHC 5/16"-18 X 1-3/4" .....	3.....	REPLACES P/N 492367
22	18057	LEVER, ASSY. PARK BRAKE	1	
23	EM923023	WASHER, FLAT 3/8" .....	6.....	REPLACES P/N 492597
24	18145	ROD, BRAKE CONTROL	1	
25	512881	BRAKE BAND ASSY.....	2.....	INCLUDES ITEMS W/\$
26	6109170	WASHER, FLAT 1/2" .....	2.....	REPLACES P/N 492600

# STEERING AND CONTROLS ASSY.



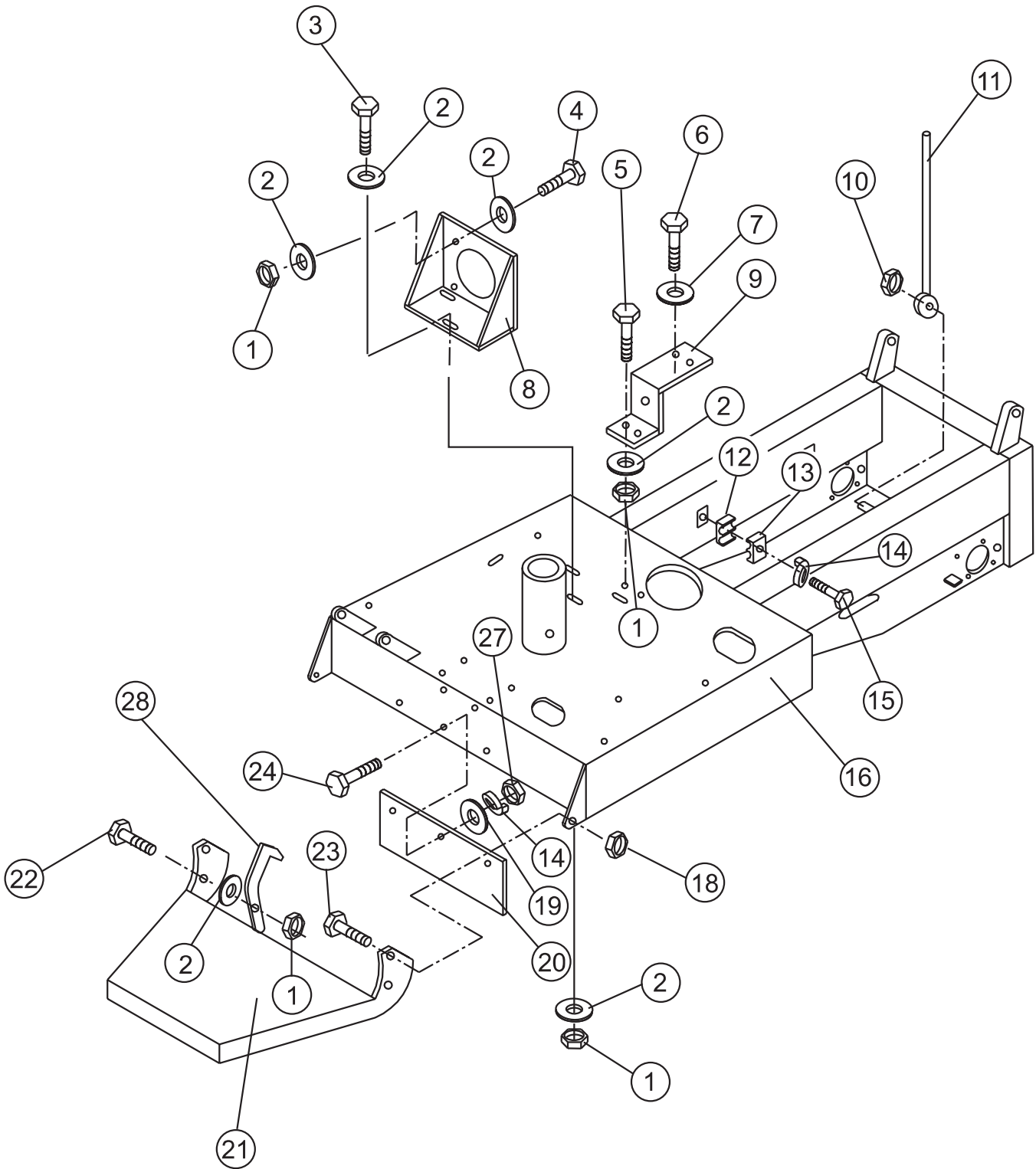
**NOTES:**

**1** BEARING, ITEM 27 AND BUSHING ITEM 31 ARE LOCATED INSIDE STEERING AXLE.

## STEERING AND CONTROLS ASSY.

<u>NO.</u>	<u>PART NO.</u>	<u>PART NAME</u>	<u>QTY.</u>	<u>REMARKS</u>
1	2508	SCREW, HHC 1/4"-20 X 2-1/4".....	1.....	REPLACES P/N 512414
2	492369	SCREW, HHC 5/16"-18 X 2-1/4"	1	
3	18183	ROD-END, THROTTLE CABLE	2	
4	2105164	NUT, NYLOC 5/16"-18.....	1.....	REPLACES P/N 492582
5	EM504505	WRAP, TIE 4.6 X 360 MM.....	1.....	REPLACES PN 504505
6	491030	WRAP, TIE 2.5 X 142 MM	2	
7	505304	COVER, WIRE (LOOM)	1	
8	18242	HANDLE BAR	1	
9	15081	GRIP, HANDLE BAR	2	
10	18133	CABLE, THROTTLE	1	
11	515417	SWITCH HARNESS ASSY.	1	
11A	18131	SWITCH, KILL.....	1.....	REPLACES P/N 18025
12	513489	SCREW, ALLEN HEAD 1/4"-20 X 3/8".....	1.....	REPLACES P/N 492465
13	492581	NUT, NYLOC 1/4"-20	2	
14	509161	WASHER, FLAT 5/16"	2	
15	18132	LEVER, THROTTLE	1	
16	18182	BUSHING, CABLE	1	
17	18176	SPRING	1	
18	18181	BUSHING, CABLE	1	
19	18061	LEVER, CONTROL	1	
20	492357	SCREW, HHC 1/4"-20 X 1	1	
21	511717	KEY, WOODRUFF 1/8" X 5/8"	1	
22	492584	NUT, NYLOC 1/2"-13	1	
23	18177	SPRING	1	
24	EM969013	NUT, NYLOC 3/8".....	2.....	REPLACES P/N 492583
25	3019092	WASHER, FLAT 3/8".....	2.....	REPLACES P/N 492598
26	491723	PIN, STEERING SHAFT	1	
27	18238	BEARING, STEERING SHAFT	1	
28	512186	PIN, STEERING SHAFT	1	
29	513360	AXLE, STEERING	1	
30	803151	STOP, STEERING	1	
31	512200	BUSHING, BRONZE	2	
32	8115	NUT LUG	8	
33	3469	CAP, DUST	2	
34	18049F	WHEEL, STEERING ASSY. REAR.....	2.....	FOAM FILLED TIRE
35	512210	NUT, CASTLE	2	
36	EM924008	PIN, COTTER 1/8" X 1-1/2".....	2.....	REPLACES P/N 491688
37	EM501299	WASHER, REAR WHEEL HUB	4	
38	511159	WASHER, FLAT 1"	2	
39#	EM903113	BEARING CONE	4	
40#	EM903012	BEARING CUP	4	
41#	15191VB	SEAL	2	
42	EM941306	HUB, REAR WHEEL.....	2.....	INCLUDES ITEMS W/#

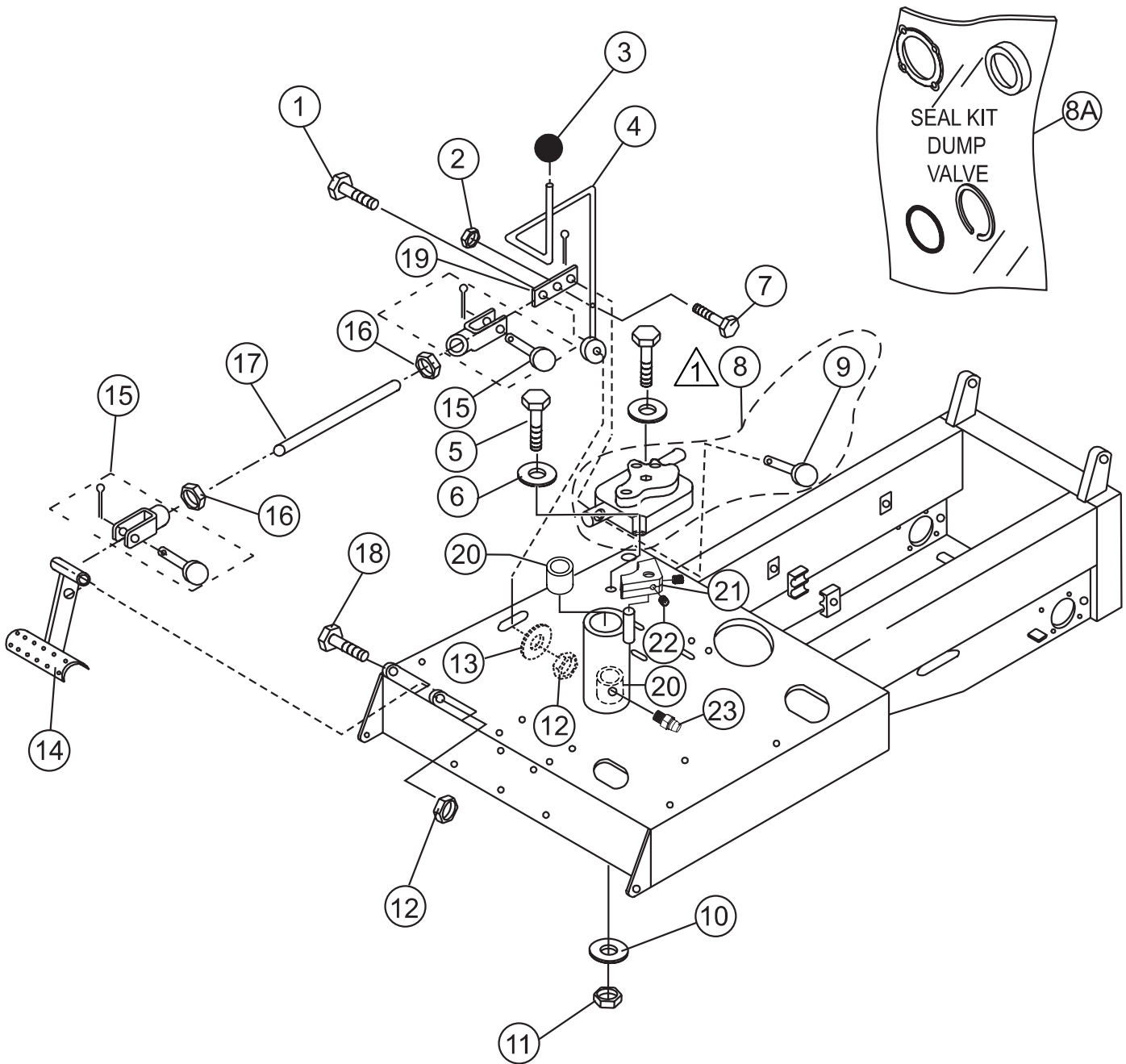
# CHASSIS ASSY.



## CHASSIS ASSY.

<u>NO.</u>	<u>PART NO.</u>	<u>PART NAME</u>	<u>QTY.</u>	<u>REMARKS</u>
1	EM969013	NUT, NYLOC 3/8" .....	10.....	REPLACES P/N 492583
2	3019092	WASHER, FLAT 3/8" .....	18.....	REPLACES P/N 492598
3	EM963057	SCREW, HHC 3/8"-16 X 1-1/2" .....	3.....	REPLACES P/N 492313
4	503112	SCREW, HHC 3/8"-16 X 2-3/4" .....	4	
5	EM963610	SCREW, HHC 3/8" X 1-1/4" GRD 8 .....	2.....	REPLACES P/N 492375
6	492356	SCREW, HHC 1/4" NC X 3/4" GRD 5 .....	2	
7	2101402	WASHER, LOCK 1/4" .....	2.....	REPLACES P/N 492622
8	512196	BRACKET, HYD. PUMP MOUNTING .....	1	
9	18146	MOUNT, OIL FILTER .....	1	
10	505069	NUT, NYLOC 3/4"-10 .....	1	
11	18198	ROD, TUB PROP .....	1	
12	505976	CLAMP, BRACKET .....	2	
13	506185	CLAMP, BRACKET .....	2	
14	EM923343	WASHER, LOCK 5/16" .....	5.....	REPLACES P/N 492623
15	492366	SCREW, HHC 5/16"-18 X 1-1/2" .....	2	
16	18047	CHASSIS .....	1	
18	EM969023	NUT, NYLOC 5/8"-11 .....	2.....	REPLACES P/N 492586
19	492597	WASHER, FLAT 9.5 X 22.2 .....	3	
20	18162	PANEL, REAR WHEEL COVER .....	1	
21	18222	PLATFORM, OPERATOR .....	1	
22	EM963057	SCREW, HHC 3/8"-16 X 1-1/2" .....	1.....	REPLACES P/N 492313
23	492406	SCREW, HHC 5/8"-11 X 1-1/2" .....	2	
24	492363	SCREW, HHC 5/16"-18 X 3/4" .....	3	
27	2105164	NUT, HEX 5/16"-18 .....	3.....	REPLACES P/N 492553
28	18173	LATCH, PLATFORM .....	1	

# HANDLE/FOOT DUMP CONTROLS ASSY.

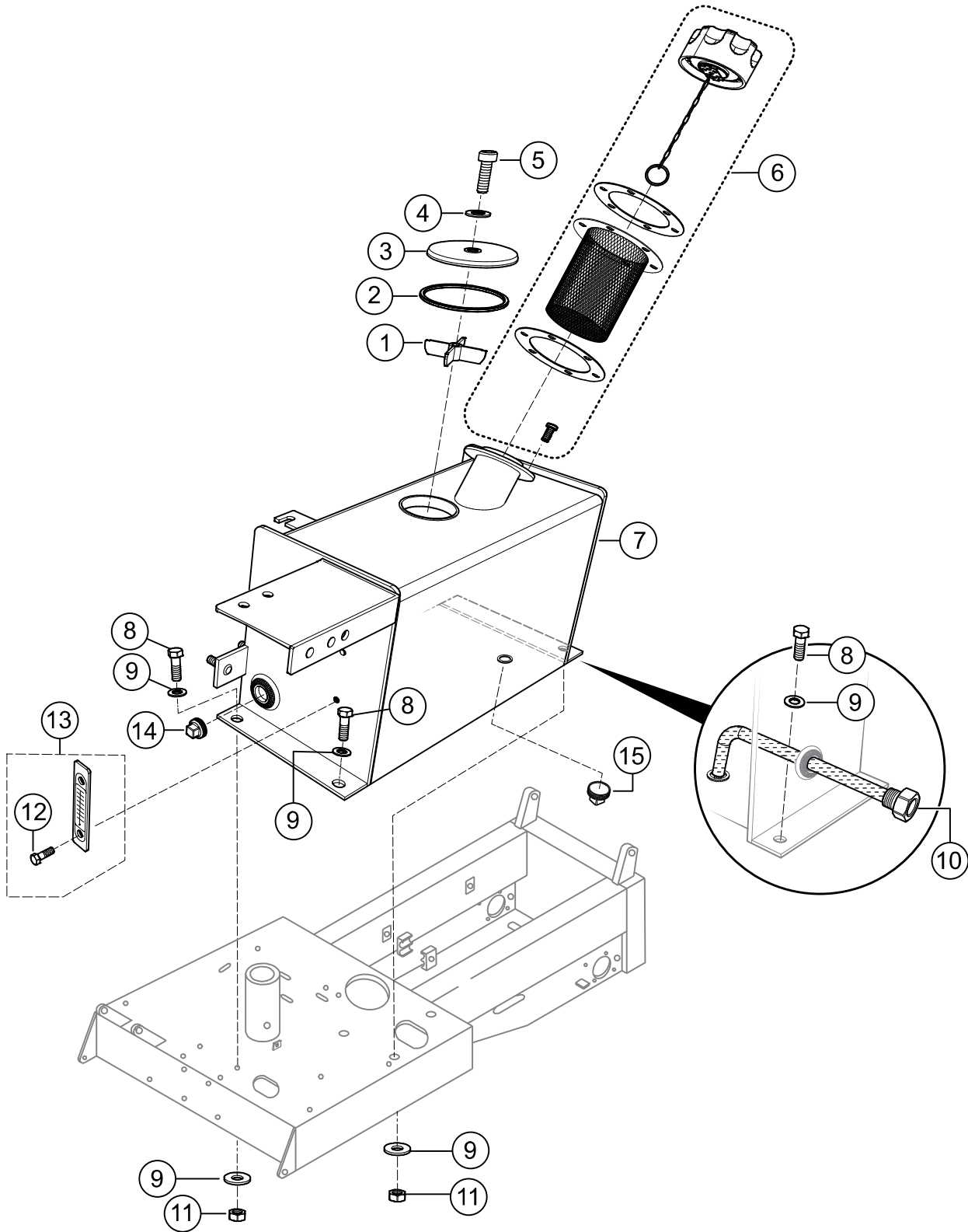


1 REFERENCE HYDRAULIC  
DUMP ASSY.

## HANDLE/FOOT DUMP CONTROLS ASSY.

<u>NO.</u>	<u>PART NO.</u>	<u>PART NAME</u>	<u>QTY.</u>	<u>REMARKS</u>
1	492401	SCREW, HHC 1/2"-13 X 4	1	
2	503119	NUT, NYLOC 3/16"	1	
3	18121	KNOB, LEVER	1	
4	18065	LEVER, DUMP VALVE	1	
5	512185	SCREW, HHC 1/4"-20 X 1-3/4"	2	
6	492622	WASHER, FLAT 1/4"	4	
7	512183	SCREW, HHC 3/16"-24 X 1-1/4"	1	
8	18064	VALVE, DUMP .....	1	INCLUDES ITEMS W/\$
8A	18064SK	SEAL KIT, DUMP VALVE	1	
9\$		PIN, DUMP VALVE CROSS .....	1	NOT SOLD SEPARATELY
10	492596	WASHER, FLAT 1/4"	1	
11	492581	NUT, NYLOC 1/4"-20	1	
12	492584	NUT, NYLOC 1/2"-13	2	
13	492600	WASHER, FLAT 1/2"	1	
14	18152	PEDAL, DUMP VALVE	1	
15	18123	CLEVIS ASSY., DUMP VALVE	2	
16	492574	NUT, HEX 3/8"	2	
17	18153	ROD, DUMP VALVE	1	
18	492400	SCREW, HHC 1/2"-13 X 3-1/2"	1	
19	18122	BELL CRANK, DUMP VALVE	1	
20	512200	BUSHING, BRONZE	2	
21	803151	STOP, STEERING	1	
22	492467	SET SCREW, 5/16" X 3/8" NC	2	
23	503901	ZERK FITTING 1/4"-28	1	

# HYDRAULIC OIL TANK ASSY.

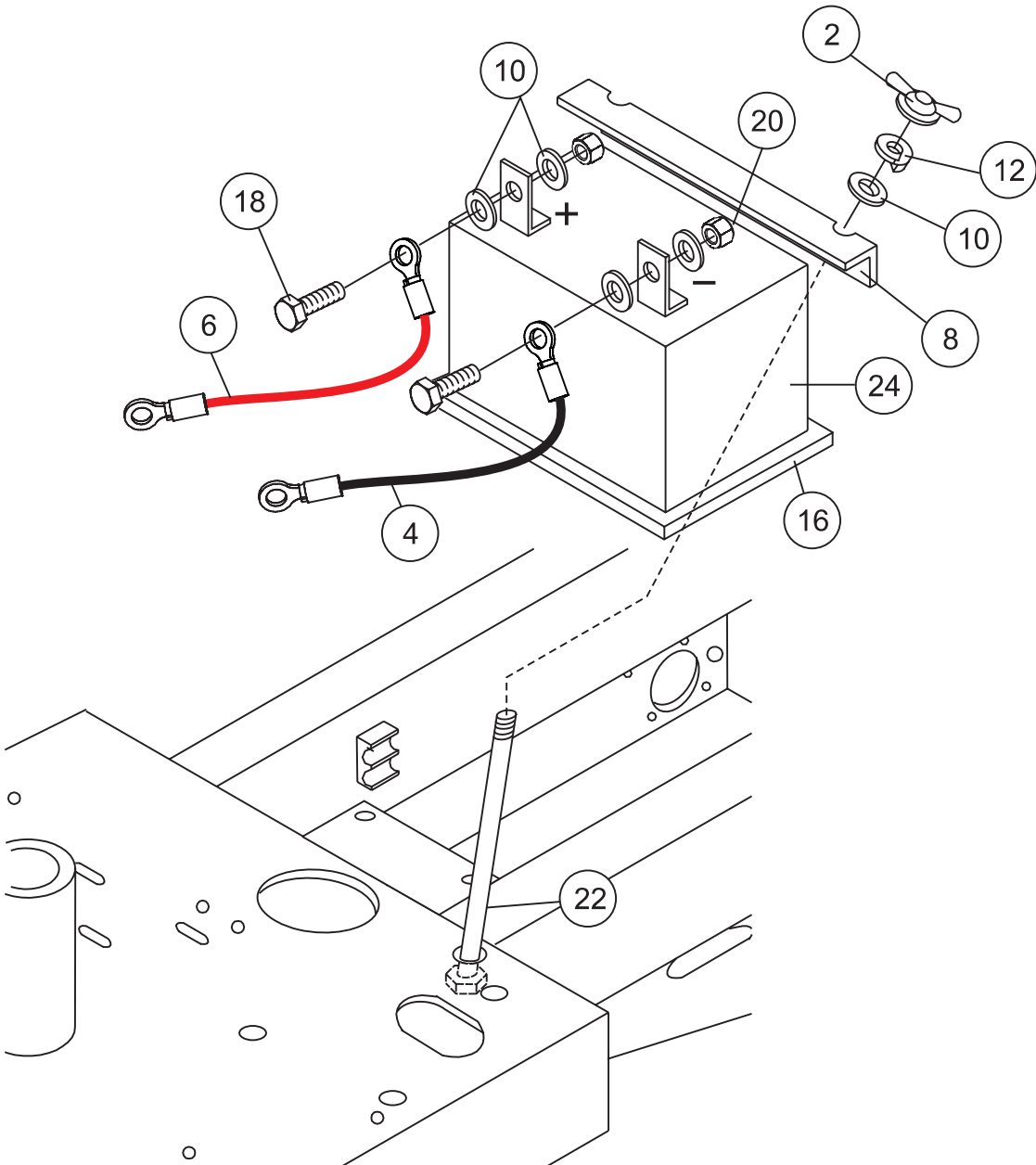




## HYDRAULIC OIL TANK ASSY.

<u>NO.</u>	<u>PART NO.</u>	<u>PART NAME</u>	<u>QTY.</u>	<u>REMARKS</u>
1	520461	RETAINER	1	
2	801791	O-RING	1	
3	520460	COVER	1	
4	520343	O-RING	1	
5	510717	BOLT, 1/2"NC X 1-3/4"	1	
6	EM16477	CAP, HYDRAULIC OIL TANK	1	
7	18125	TANK, HYDRAULIC OIL	1	
8	EM963610	SCREW, HHC 3/8" X 1-1/4" .....	3.....	REPLACES P/N 492376
9	3019092	WASHER, FLAT 3/8" .....	6.....	REPLACES P/N 492598
10	18229	SCREEN, OIL RESERVOIR	1	
11	EM969013	NUT, NYLOC 3/8"-16 .....	3.....	REPLACES P/N 492583
12%		SCREW.....	2.....	NOT SOLD SEPARATELY
13	18052	SIGHT GAUGE, HYD. OIL TANK .....	1.....	INCLUDES ITEMS W/%
14	491213	PLUG, HYD. OIL TANK 3/4"-14 NPT	1	
15	506094	PLUG, HYD. OIL TANK 1/2" NPT	1	

**BATTERY ASSY.**

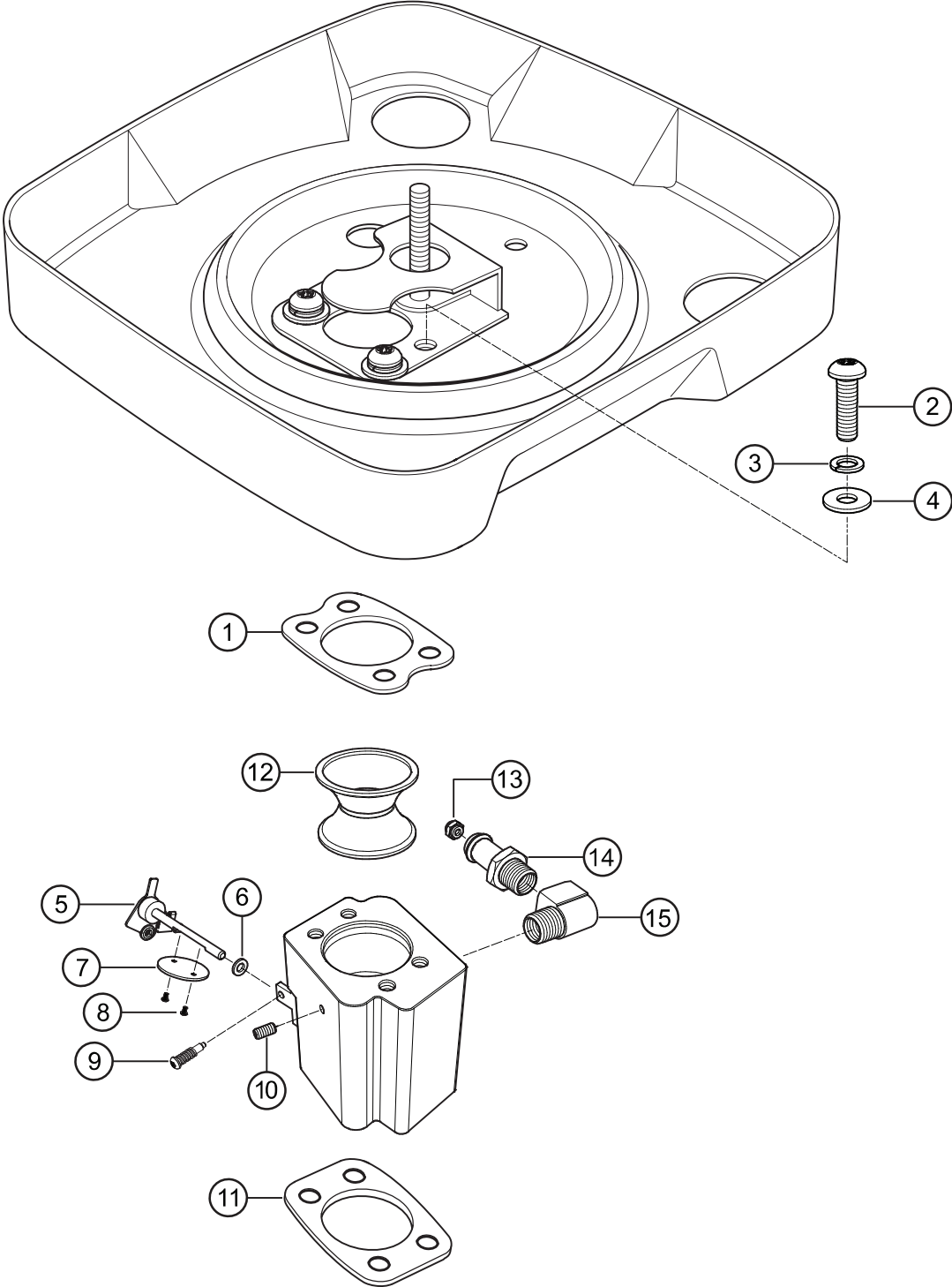


## BATTERY ASSY.

---

<u>NO.</u>	<u>PART NO.</u>	<u>PART NAME</u>	<u>QTY.</u>	<u>REMARKS</u>
2	505500	WINGNUT	2	
4	512557	BATTERY CABLE, NEGATIVE	1	
6	511250	BATTERY CABLE, POSITIVE	1	
8	512555	BATTERY SUPPORT BRACKET	1	
10	EM92305	WASHER, FLAT 1/4".....	6.....	REPLACES P/N 492596
12	2101402	WASHER, LOCK 1/4" .....	2.....	REPLACES P/N 492622
16	508480	BATTERY SUPPORT PLATFORM	1	
18	503118	BOLT 3/16" X 1"	2	
20	503119	NUT 3/16"	2	
22	512585	SUPPORT BRACKET BOLT	2	
24	4671	BATTERY	1	

# CARBURETOR ASSY.

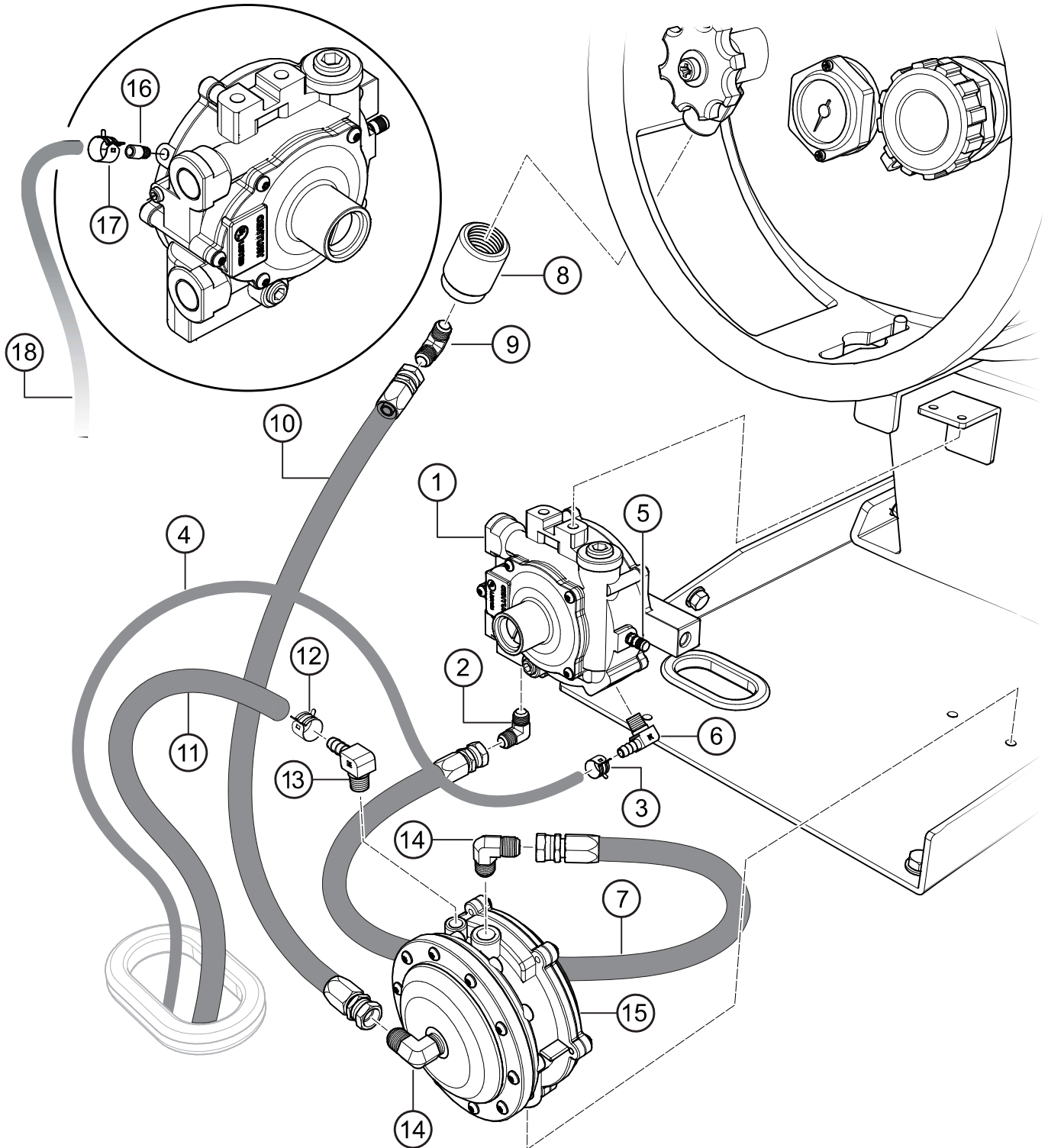


## CARBURETOR ASSY.

---

<u>NO.</u>	<u>PART NO.</u>	<u>PART NAME</u>	<u>QTY.</u>	<u>REMARKS</u>
1	PS692081	AIR CLEANER GASKET	1	
2	PS327431	SCREW, BTN. HD. SOC 1/4"-20X5/8"	4	
3	PS32533	WASHER, LOCK 1/4"	4	
4	PS453023	WASHER, FLAT 1/4"	4	
5	PS809062	SHAFT, THROTTLE	1	
6	PS690722	SPACER, NEOPRENE	1	
7	PS806132	VALVE, THROTTLE	1	
8	PS690718	SCREW, THROTTLE SHAFT	2	
9	PS699721	KIT, IDLE SPEED	1	
10	PS260418	SET SCREW 10-32X1/4"	1	
11	PS691694	INTAKE GASKET	1	
12	PS620145	AIR VENTURE #22, 0.680 ID	1	
13	PS620100141	FUEL JET, 0.141 (0-2000 FT.)	1	
13	PS620100139	FUEL JET, 0.139 (2000-4000 FT.)	1	
13	PS620172	FUEL JET, 0.136 (4000-5000 FT.)	1	
13	PS620100135	FUEL JET, .0135 (5000 FT. AND ABOVE)	1	
14	PS620135	BRASS FITTING 3/8"PTX1/2" BARB	1	
15	PS151220	BRASS STREET ELBOW 3/8"X3/8" NPT	1	

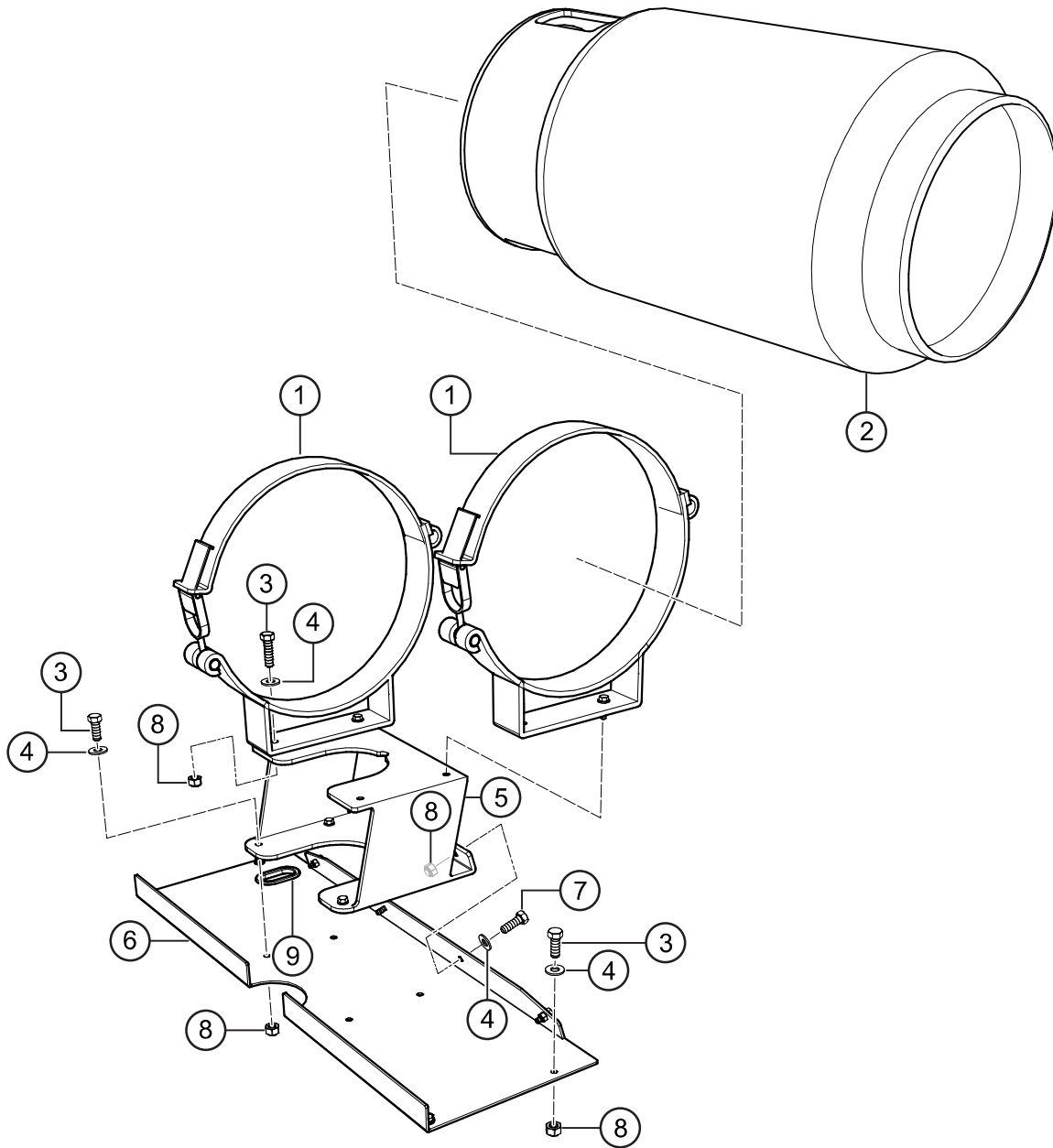
# REGULATOR AND VACUUM VALVE ASSY.



## **REGULATOR AND VACUUM VALVE ASSY.**

<u>NO.</u>	<u>PART NO.</u>	<u>PART NAME</u>	<u>QTY.</u>	<u>REMARKS</u>
1	R151471	PRESSURE REGULATOR	1	
2	R151216	BRASS 90° MALE ELBOW 3/8"X1/4" NPT	1	
3	R151238	CLAMP, SCREW #10	2	
4	PS150013	LOW PRESSURE HOSE, 50"	1	
5	PSVB1	SCHRADER VALVE	1	
6	R151298	BRASS 90° ELBOW 3/8"X1/2" NPT BARB	1	
7	PS150012	HIGH PRESSURE HOSE 14"	1	
8	R151260	QUICK DISCONNECT 1-1/4" X 1/4 ACME LH" NNPT FM	1	
9	R151218	BRASS 45° ELBOW 3/8"X1/4" NPT	1	
10	R151474	PROPANE HOSE, PRESSURE 30"	1	
11	PS150024	VACUUM LINE, 1/4"X60" ID	1	
12	R2412146	HOSE CLAMP, SPRING 1/4"	2	
13	R151239	BRASS 90° ELBOW, 1/4"X1/4" MNPT BARB	1	
14	R151216	BRASS 90° MALE ELBOW 3/8" X 1/4" MNPT	2	
15	PSVFF303P	VACUUM FUEL LOCK W/PRIMER	1	
16	TBD	STRAIGHT FITTING	1	
17	TBD	TENSION CLAMP	1	
18	TBD	HOSE, BREATHER	1	

# PROPANE TANK ASSY.



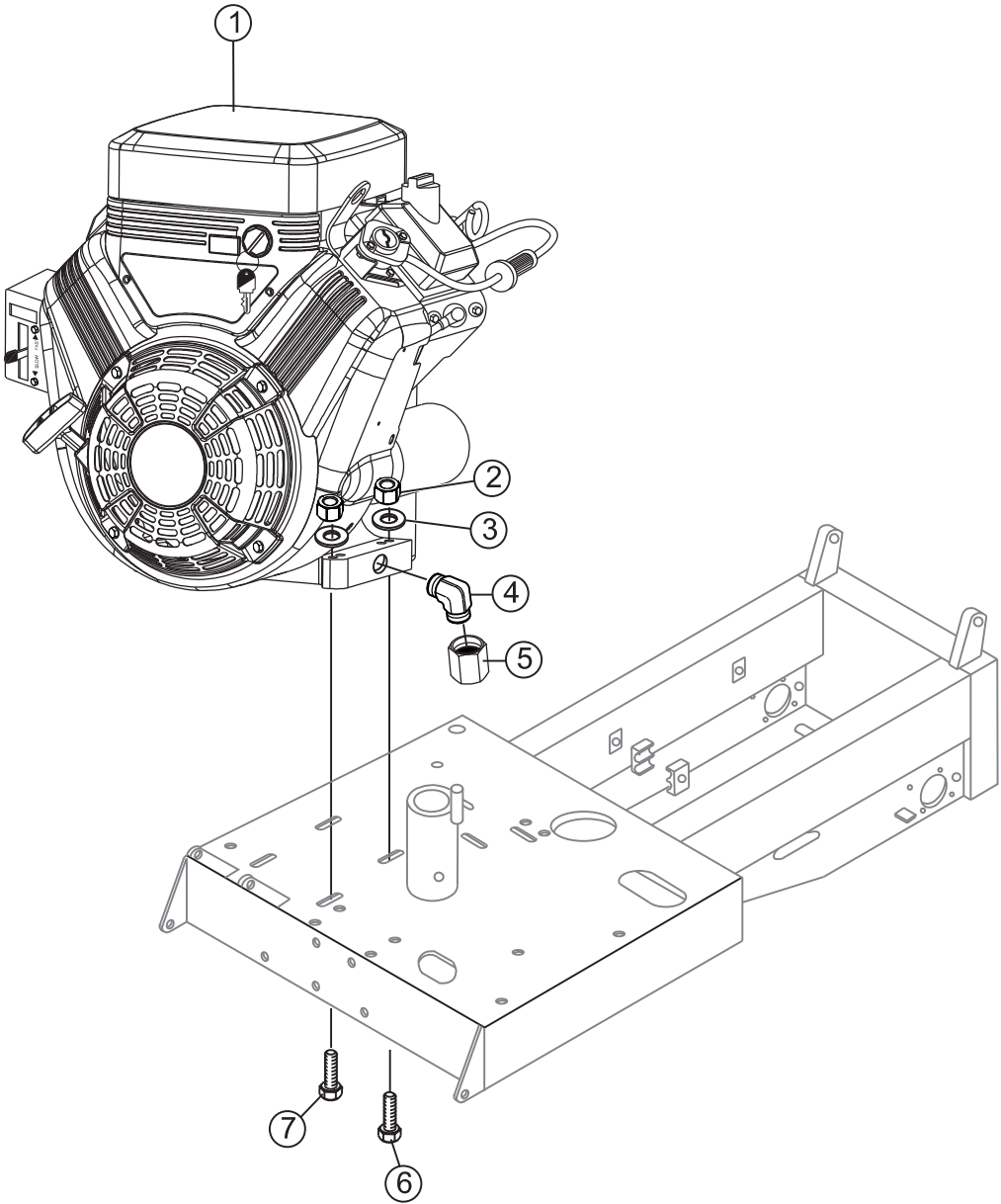


## PROPANE TANK ASSY.

---

<u>NO.</u>	<u>PART NO.</u>	<u>PART NAME</u>	<u>QTY.</u>	<u>REMARKS</u>
1	R151166	STRAP, PROPANE TANK	2	
2	R151330	TANK, 33.5 LB. PROPANE, HORIZONTAL VAPOR	1	
3	R3224	BOLT, HEX HD. 5/16-18"X7/8"	2	
4	R453009	WASHER, FLAT 5/16" SAE	16	
5	PS150010	TANK STAND ASSY.	1	
6	PS150011	CHASSIS PLATE ASSY.	1	
7	R300102	BOLT, HEX HD. 5/16-18"X1" GR5	14	
8	R1048300	LOCKNUT, 5/16-18" FLANGED ZINC	16	
9	R24012	GROMMET	1	

# ENGINE MOUNTING ASSY.

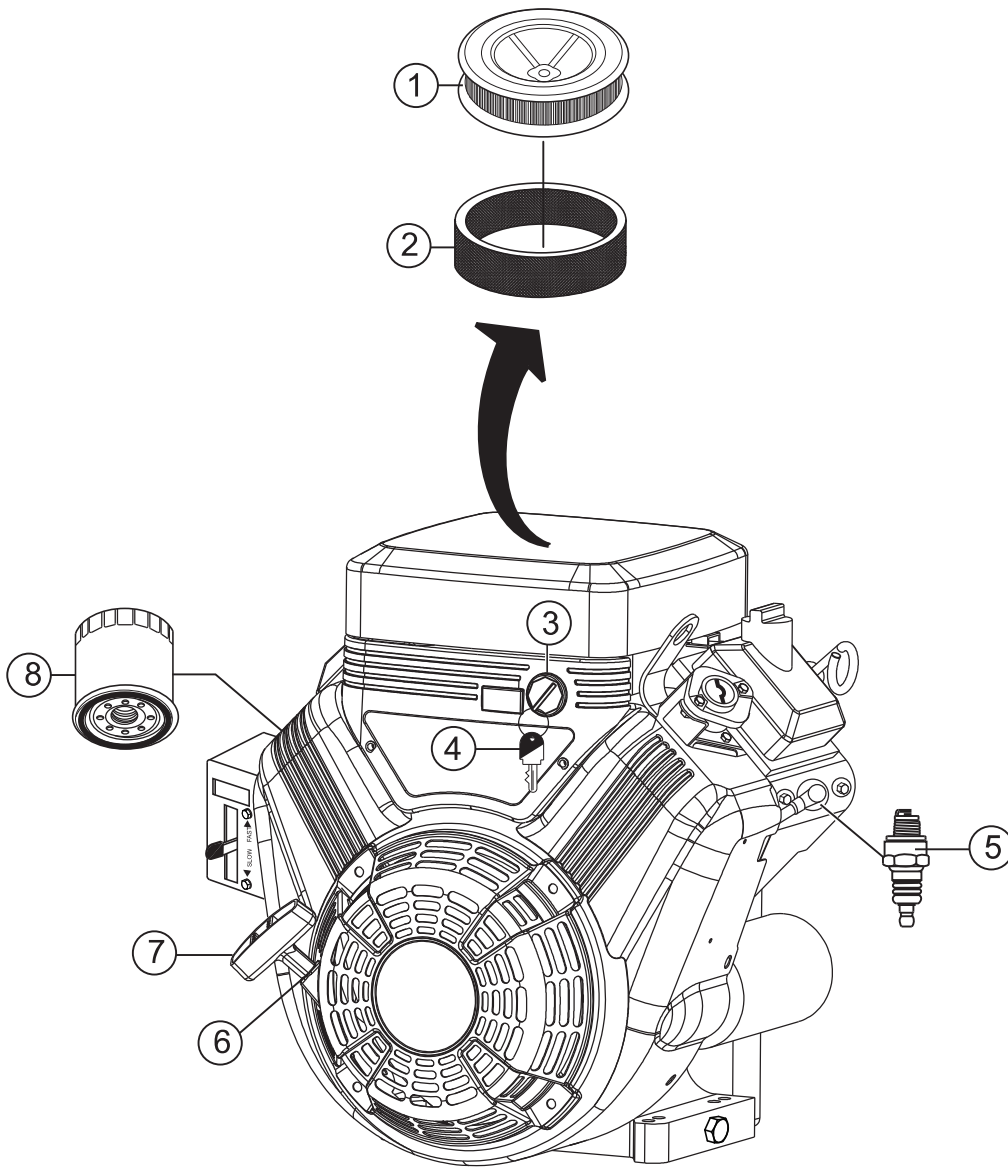


## ENGINE MOUNTING ASSY.

---

<u>NO.</u>	<u>PART NO.</u>	<u>PART NAME</u>	<u>QTY.</u>	<u>REMARKS</u>
1	3564470394G1	ENGINE, B&S 18HP VANGUARD	1	
2	492581	NUT, NYLOC 5/6"	4	
3	EM923023	WASHER, FLAT 3/8" .....	4.....	REPLACES P/N 505679
4	513593	90° FITTING	1	
5	513594	ADAPTER PLUG	1	
6	492368	SCREW, 5/16" NC X 2" GRD 5.....	1.....	GROUND CONNECTION
7	2105162	SCREW, 5/16" NC X 1-3/4" GRD 5 .....	3.....	REPLACES P/N 492367

# ENGINE SERVICE PARTS



## ENGINE SERVICE PARTS

---

<u>NO.</u>	<u>PART NO.</u>	<u>PART NAME</u>	<u>QTY.</u>	<u>REMARKS</u>
1	394018S	AIR FILTER	1	
2	272490S	PRE-CLEANER	1	
3	692318	IGNITION SWITCH, W/KEY	1	
4	691959	IGNITION KEY SET	2	
5	496018S	SPARK PLUG, CHAMPION	2	
6	66574	ROPE STARTER	1	
7	808167	GRIP STARTER	1	
8	842921	OIL FILTER	1	