

# OPERATION AND PARTS MANUAL

# STOW

A DIVISION OF MULTIQUIP INC.

## **STR36SP**

### **RIDE-ON POWER TROWEL**

#### **HONDA GX670TAF 24 HP ENGINE**

Revision #0(09/16/11)

THIS MANUAL MUST ACCOMPANY THE EQUIPMENT AT ALL TIMES.

**P/N 21827**

## STOW — STR36SP SERIES RIDE-ON POWER TROWEL

Proposition 65 Warning .....	2
Silicosis/Respiratory Warnings .....	3
Table of Contents .....	4
Parts Ordering Procedures .....	5
Training Checklist .....	6
Daily Pre-Operation Checklist .....	7
Safety Message Alert Symbols .....	8-9
Rules For Safe Operation .....	10-13
Operation And Safety Decals .....	14
Specifications .....	15
Engine Specifications .....	16
General Information .....	17
Controls and Indicators .....	18-19
Basic Engine .....	20
New Machine Setup Instructions .....	21
Initial Start-Up .....	22
Operation .....	23-24
Maintenance .....	25-36
Engine Troubleshooting .....	37-38
Troubleshooting (Trowel) .....	39-40
Explanation of Codes in Remarks Column .....	42
Suggested Spare Parts .....	43

## Component Drawings

Decal Assembly .....	44-45
Pivot Assembly (Right/Left) .....	46-47
Steering Handles Assembly (Left and Right) .....	48-49
Steering Control Assembly .....	50-51
Gearbox Assembly (Right) .....	52-53
Gearbox Assembly (Left) .....	54-55
Single Pitch Handle Assembly (Left & Right) .....	56-57
Drive Assembly .....	58-59
Muffler/Belt Assembly .....	60-61
Belt Guard Assembly .....	62-63
Spider Assembly (Right) .....	64-65
Spider Assembly (Left) .....	66-67
Yoke Assembly .....	68-69
Foot Pedals/Throttle Assembly .....	70-71
Control Panel Assembly .....	72-73
Frame/Fuel Assembly .....	74-75
Battery Assembly .....	76-77
Seat Frame Assembly .....	78-79

## HONDA GX-670-TAF ENGINE

Air Cleaner Assembly .....	80-81
Camshaft Assembly .....	82-83
Carburetor Assembly .....	84-85
Control Assembly .....	86-87
Control Box Assembly .....	88-89
Crankcase Cover Assembly .....	90-91
Crankshaft Assembly .....	92-93
Cylinder Barrel Assembly .....	94-95
Cylinder Head Assembly .....	96-97
Fan Cover Assembly .....	98-99
Flywheel Assembly .....	100-101
Fuel Pump Assembly .....	102-103
Ignition Coil Assembly .....	104-105
Labels Assembly .....	106-107
Oil Cooler Assembly .....	108-109
Piston and Connecting Rod Assembly .....	110-111
Starter Motor Assembly .....	112-113
Terms And Conditions Of Sale .....	114

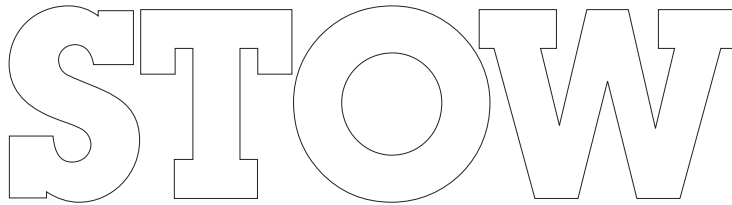
# STR36SP-SERIES — OPERATION AND SAFETY DECALS

## Machine Safety Decals

The STR36SP-SERIES Ride-On Power Trowel is equipped with a number of operation and safety decals. These decals are provided for operator safety and maintenance information. Should any of these decals become unreadable, replacements can be obtained from your dealer.



P/N 35137



P/N 11111 11" x 3"



P/N TBD



P/N: 21455



P/N 2814 (WHITE)



P/N 35168



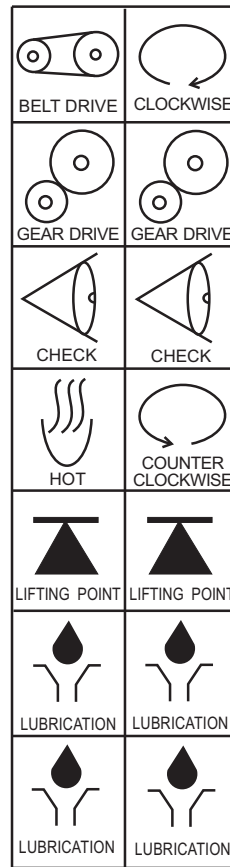
P/N 36099 (ISO Blue)



P/N 20953



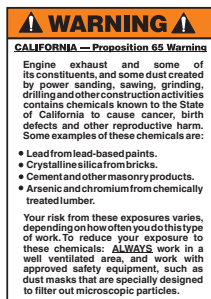
CONTACT SERVICE DEPARTMENT



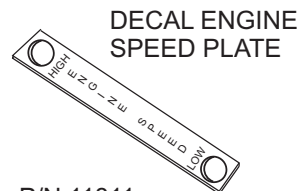
P/N: 11246



P/N 2634



P/N 20525



P/N 11811



P/N: 13118

# STR36SP-SERIES — EXPLANATION OF CODES IN REMARKS COLUMN

The following section explains the different symbols and remarks used in the Parts section of this manual. Use the help numbers found on the back page of the manual if there are any questions.

## NOTICE

The contents and part numbers listed in the parts section are subject to change **without notice**. Multiquip does not guarantee the availability of the parts listed.

## SAMPLE PARTS LIST

NO.	PART NO.	PART NAME	QTY.	REMARKS
1	12345	BOLT.....	1	INCLUDES ITEMS W/%
2%		WASHER, 1/4 IN.....		NOT SOLD SEPARATELY
2%	12347	WASHER, 3/8 IN....	1	MQ-45T ONLY
3	12348	HOSE .....		A/R ...MAKE LOCALLY
4	12349	BEARING .....	1	S/N 2345B AND ABOVE

## NO. Column

**Unique Symbols** — All items with same unique symbol

(@, #, +, %, or >) in the number column belong to the same assembly or kit, which is indicated by a note in the “Remarks” column.

**Duplicate Item Numbers** — Duplicate numbers indicate multiple part numbers, which are in effect for the same general item, such as different size saw blade guards in use or a part that has been updated on newer versions of the same machine.

## NOTICE

When ordering a part that has more than one item number listed, check the remarks column for help in determining the proper part to order.

## PART NO. Column

**Numbers Used** — Part numbers can be indicated by a number, a blank entry, or TBD.

TBD (To Be Determined) is generally used to show a part that has not been assigned a formal part number at the time of publication.

A blank entry generally indicates that the item is not sold separately or is not sold by Multiquip. Other entries will be clarified in the “Remarks” Column.

## QTY. Column

**Numbers Used** — Item quantity can be indicated by a number, a blank entry, or A/R.

A/R (As Required) is generally used for hoses or other parts that are sold in bulk and cut to length.

A blank entry generally indicates that the item is not sold separately. Other entries will be clarified in the “Remarks” Column.

## REMARKS Column

Some of the most common notes found in the “Remarks” Column are listed below. Other additional notes needed to describe the item can also be shown.

**Assembly/Kit** — All items on the parts list with the same unique symbol will be included when this item is purchased.

Indicated by:

“INCLUDES ITEMS W/(unique symbol)”

**Serial Number Break** — Used to list an effective serial number range where a particular part is used.

Indicated by:

“S/N XXXXX AND BELOW”

“S/N XXXX AND ABOVE”

“S/N XXXX TO S/N XXX”

**Specific Model Number Use** — Indicates that the part is used only with the specific model number or model number variant listed. It can also be used to show a part is NOT used on a specific model or model number variant.

Indicated by:

“XXXXX ONLY”

“NOT USED ON XXXX”

**“Make/Obtain Locally”** — Indicates that the part can be purchased at any hardware shop or made out of available items. Examples include battery cables, shims, and certain washers and nuts.

**“Not Sold Separately”** — Indicates that an item cannot be purchased as a separate item and is either part of an assembly/kit that can be purchased, or is not available for sale through Multiquip.

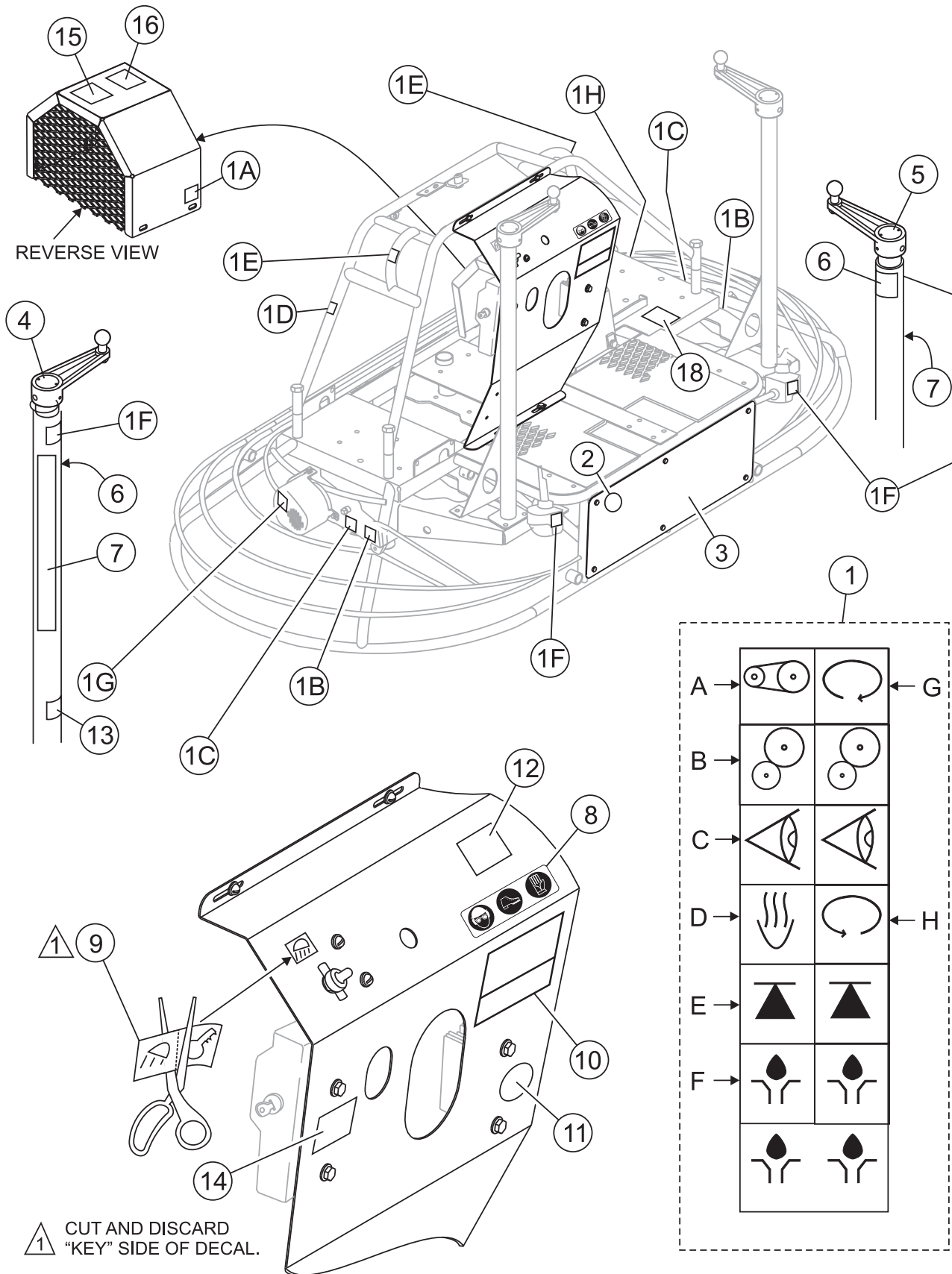
# STR36SP-SERIES — SUGGESTED SPARE PARTS

## STR36SP-SERIES - HONDA GX670TAF 24 HP ENGINE

### 1 Unit

Qty.	P/N	Description	Qty.	P/N	Description
			10	10031	WASHER 1/4 IN.
			1	12548	SPRAY PUMP
			1	392292	SPRAY NOZZEL
			1	2108	CAP, SPRAY TANK
			1	2673	CIRCUIT BREAKER 30A, 12V
			1	4682	TOGGLE SWITCH
			1	8381	BOOT, TOGGLE SWITCH
			1	2655	HOUR METER
			1	12005	SAFETY-OFF ("KILL" SWITCH)
			1	12018	CONNECTOR, RELAY
			1	12017	RELAY, ("KILL" SWITCH)
20	0166A	WASHER	1	16910ZE8015	FUEL FILTER
20	1876	JAM NUT	1	17210ZJ1841	AIR FILTER ELEMENT
20	0164B	SCREW	1	15410ZJ4999AH	OIL FILTER
4	1157A	BUSHING	1	9807952876	SPARK PLUG - NGK
4	1316	SPRING (L.S.)	2	15611MB0000	OIL FILTER CAP
4	2143	SPRING (R.S.)	1	17218Z51840	FILTER, OUTER, AIR
4	1875	WASHER	1		
20	1322	SCREW ASSY., ARM RETAINING			
20	1162A	CAP GREASE FITTING			
4	0131A	SCREW (HHC 1/4 - 20 X 3/4)			
4	0948	WASHER, FLAT			
1	20384	BELT, DRIVE CVT			
20	0181B	WASHER 1/4 IN			
1	11418	FUEL CAP/GAUGE (ENG)			
1	19633	BUSHING, RUBBER FUEL			
1	20348	CABLE, THROTTLE (FOOT PEDAL)			
1	2153	ROD END, FEM RH (THROTTLE CABLE)			
6	2064	ROD END, FEM RH 3/8-24 (STEERING)			
4	2063	ROD END, MALE RH 3/8-24 (STEERING)			
2	11142	ROD END, MALE RH 1/2-20 (STEERING)			
4	BLADE ASSY.	CONTACT UNIT SALES DEPT/ ACCESSORY ITEM			

## DECALS

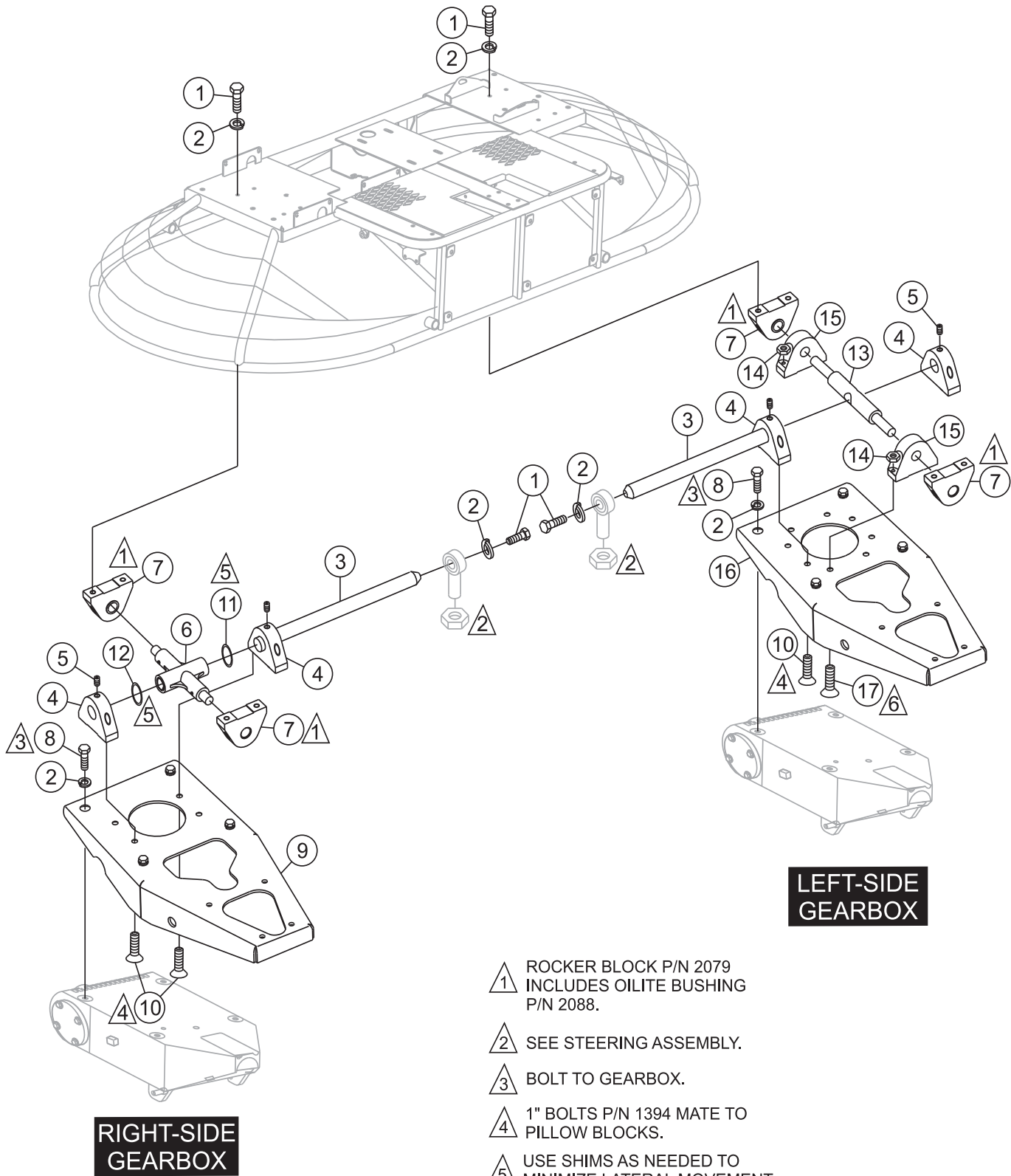


DECALS

<u>NO.</u>	<u>PART NO.</u>	<u>PART NAME</u>	<u>QTY.</u>	<u>REMARKS</u>
1	11246	DECAL SET, INTERNATIONAL STDS .....	1 .....	INCLUDES ITEMS 1A-1H
1A		DECAL, BELT DRIVE	1	
1B		DECAL, GEAR DRIVE	2	
1C		DECAL, CHECK	2	
1D		DECAL, HOT	1	
1E		DECAL, LIFTING POINT	2	
1F		DECAL, LUBRICATION	4	
1G		DECAL, CLOCKWISE	1	
1H		DECAL, COUNTER CLOCKWISE	1	
2	13118	DECAL, POWDER COATED	1	
3	TBD	DECAL, STOW	1	
4	2300	DECAL, AL. PITCH RH	1	
5	TBD	DECAL, AL. PITCH LH	1	
6	2634	DECAL, SPRING SAFETY	2	
7	1499	DECAL, STOW	2	
8	36099	DECAL, PROTECTIVE CLOTHING	1	
9	2814	DECAL, CONTROL PANEL	1	
10	TBD	DECAL, STOW SERIES	1	
11	11092	DECAL, "CE"	1	
12	35137	DECAL, READ MANUAL, ASK FOR TRAINING	1	
13	35168	DECAL, ROTATING BLADE HAZARD	2	
14	20525	DECAL, WARNING "PROP 65"	1	
15	21455	DECAL, LIFTING/CRUSH HAZARD	1	
16	36090	DECAL, VENTILATION	1	
18	21600	DECAL, SERIAL PLATE-RIDER	1	

# STR36SP-SERIES — PIVOT ASSY. (RIGHT/LEFT)

## PIVOT ASSY. (RIGHT/LEFT)



- 1 ROCKER BLOCK P/N 2079  
INCLUDES OILITE BUSHING  
P/N 2088.
- 2 SEE STEERING ASSEMBLY.
- 3 BOLT TO GEARBOX.
- 4 1" BOLTS P/N 1394 MATE TO  
PILLOW BLOCKS.
- 5 USE SHIMS AS NEEDED TO  
MINIMIZE LATERAL MOVEMENT  
OF PIVOT ARMS.
- 6 1-3/4" BOLTS P/N 1481 MATE TO  
NUTS.



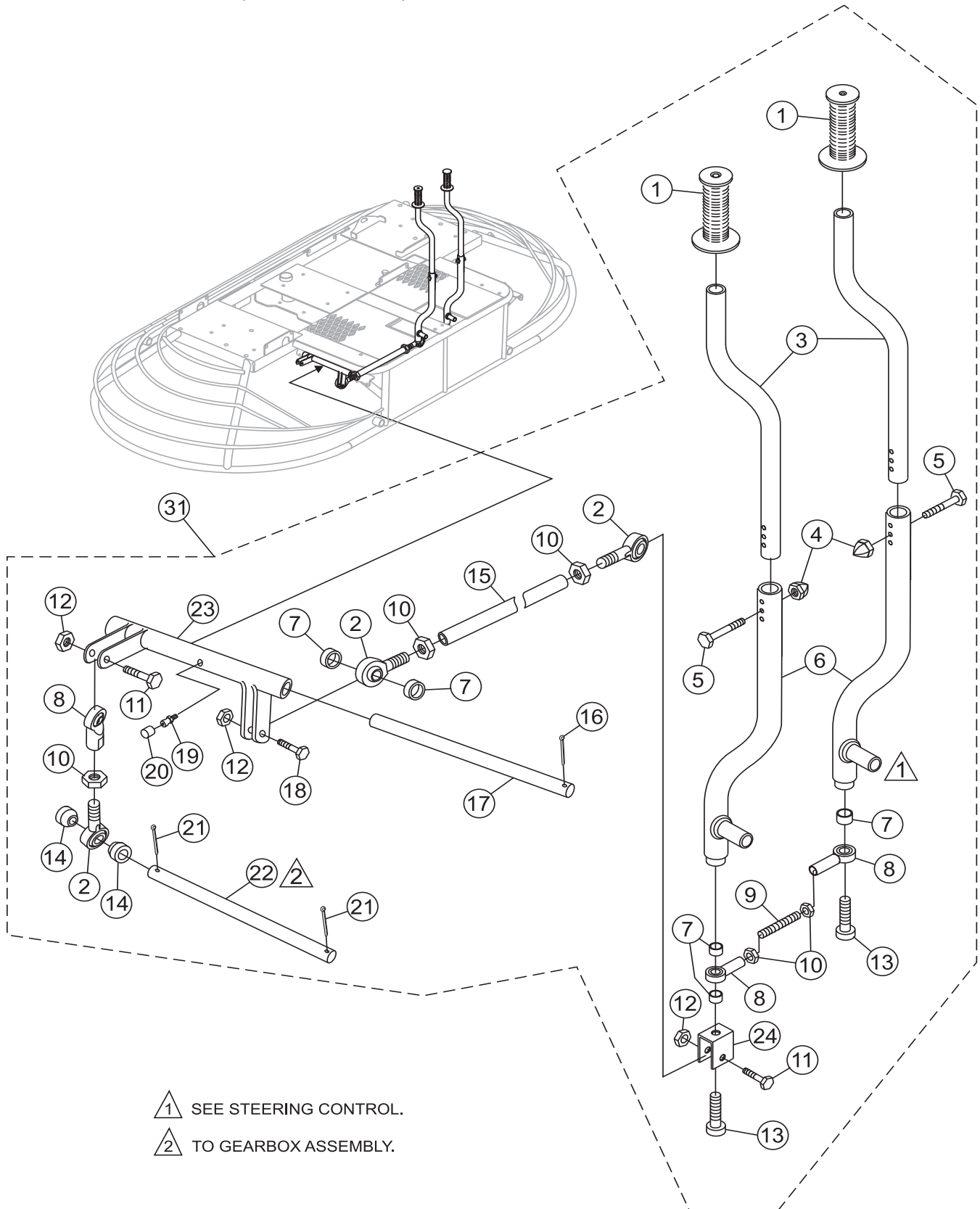
## STR36SP-SERIES — PIVOT ASSY. (RIGHT/LEFT)

### PIVOT ASSY. (RIGHT/LEFT)

<u>NO.</u>	<u>PART NO.</u>	<u>PART NAME</u>	<u>QTY.</u>	<u>REMARKS</u>
1	1023	SCREW, HHC 3/8- 16 X 1-1/4	10	
2	0166A	WASHER, LOCK, 3/8 MED.	18	
3	2824	BAR, 1" CONTROL PIVOT	2	
4	20040	ROCKER BLOCK, 1.0 HOLE	4	
5	10138	SCREW, SHS 5/16- 18 X 5/16	4	
6	2044	ARM, PIVOT RIGHT HAND	1	
7	2079	ROCKER BLOCK WITH BUSHING	4	
8	4196	SCREW, HHC 3/8- 16 X 3/4	8	
9	20011	PLATE, GEARBOX ADAPTOR, RIGHT	1	
10	1394	SCREW, FHSC 3/8- 16 X 1	8	
11	11772	SHIM TRUNNION .062 THK .....	1	USE AS NEEDED
12	11773	SHIM, TRUNNION .031 THK .....	1	USE AS NEEDED
13	2076	PIVOT TUBE	1	
14	10133	NUT, NYLOC 3/8- 16	4	
15	10973	ROCKER BLOCK	2	
16	20004	PLATE, GEARBOX ADAPTOR, LEFT	1	
17	1481	SCREW, FHSC 3/8- 16 X 1- 3/4	4	

# STR36SP-SERIES — STEERING HANDLES ASSY. (LEFT AND RIGHT)

## STEERING HANDLES ASSY, (LEFT AND RIGHT)



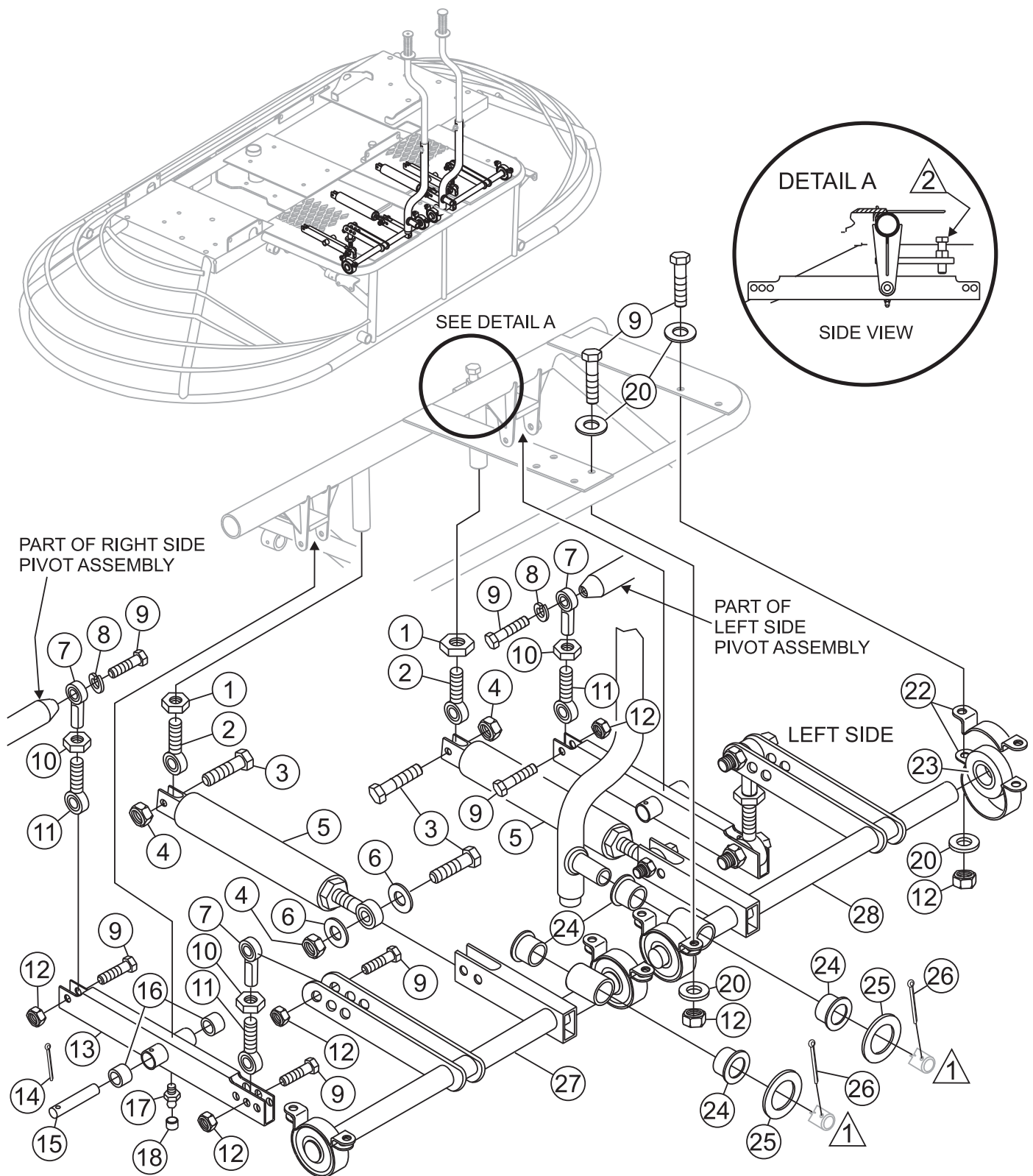
# STR36SP-SERIES — STEERING HANDLES ASSY. (LEFT AND RIGHT)

## STEERING HANDLES ASSY, (LEFT AND RIGHT)

<u>NO.</u>	<u>PART NO.</u>	<u>PART NAME</u>	<u>QTY.</u>	<u>REMARKS</u>
1*	0189	GRIP, HANDLE	2	
2*	2063	ROD END, 3/8-24 MALE RH	3	
3*	10130-1	HANDLE, TUBE	2	
4*	2197	NUT, ACORN, 1/4-20	2	
5*	0424	SCREW HHC 1/4-20 X 1-1/4	2	
6*	11079-1	HANDLE, STEERING, LOWER	2	
7*	2196	SPACER, 1/2 X .402 X 1/4L	3	
8*	2064	ROD END, 3/8-24 FEMALE RH	2	
9*	11498	THREADPIECE, 3/8-24 X 4	1	
10*	2199	NUT, HEX JAM 3/8-24	5	
11*	1284	SCREW, HHC 3/8-16 X 1-1/2	2	
12*	10133	NUT, NYLOC 3/8-16	2	
13*	11080	SCREW, SHC 3/8-16 X 2 PLTD	2	
14*	2188	SPACER, 3/4 X 25/64 X .800L	2	
15*	11513	ROD, 9 1/2 L/R LINKAGE	1	
16*	2219	PIN, COTTER 1/8 X 1-1/2	1	
17*	11497	SHAFT, L/R MOTION LEVER	1	
18*	1665	SCREW, HHC 3/8-16 X 2	1	
19*	5228	ZERK, GREASE 45, 1/4-28 LONG	1	
20*	1162A	CAP, GREASE ZERK #2 YELLOW	1	
21*	0183	PIN, COTTER 1/8 X 1-1/4	2	
22*	3550	PIN, 3/8 DIA X 5 7/8 LONG	1	
23*	11441	MOTION CONTROL, RIGHT/LEFT	1	
24*	11303	BRACKET, L/R MOTION ROD	1	
31	7798-1	STEERING ASM, W/BEARINGS .....	1	INCLUDES ITEMS W/*

# STR36SP-SERIES — STEERING CONTROL ASSY. (LEFT AND RIGHT)

STEERING CONTROL ASSY., (LEFT AND RIGHT)



RIGHT SIDE

▲ 1 SEE STEERING HANDLES.

▲ 2 ADJUST STEERING STOP SCREWS TO LIMIT TRAVEL PREVENTING CV JOINT FROM BOTTOMING.

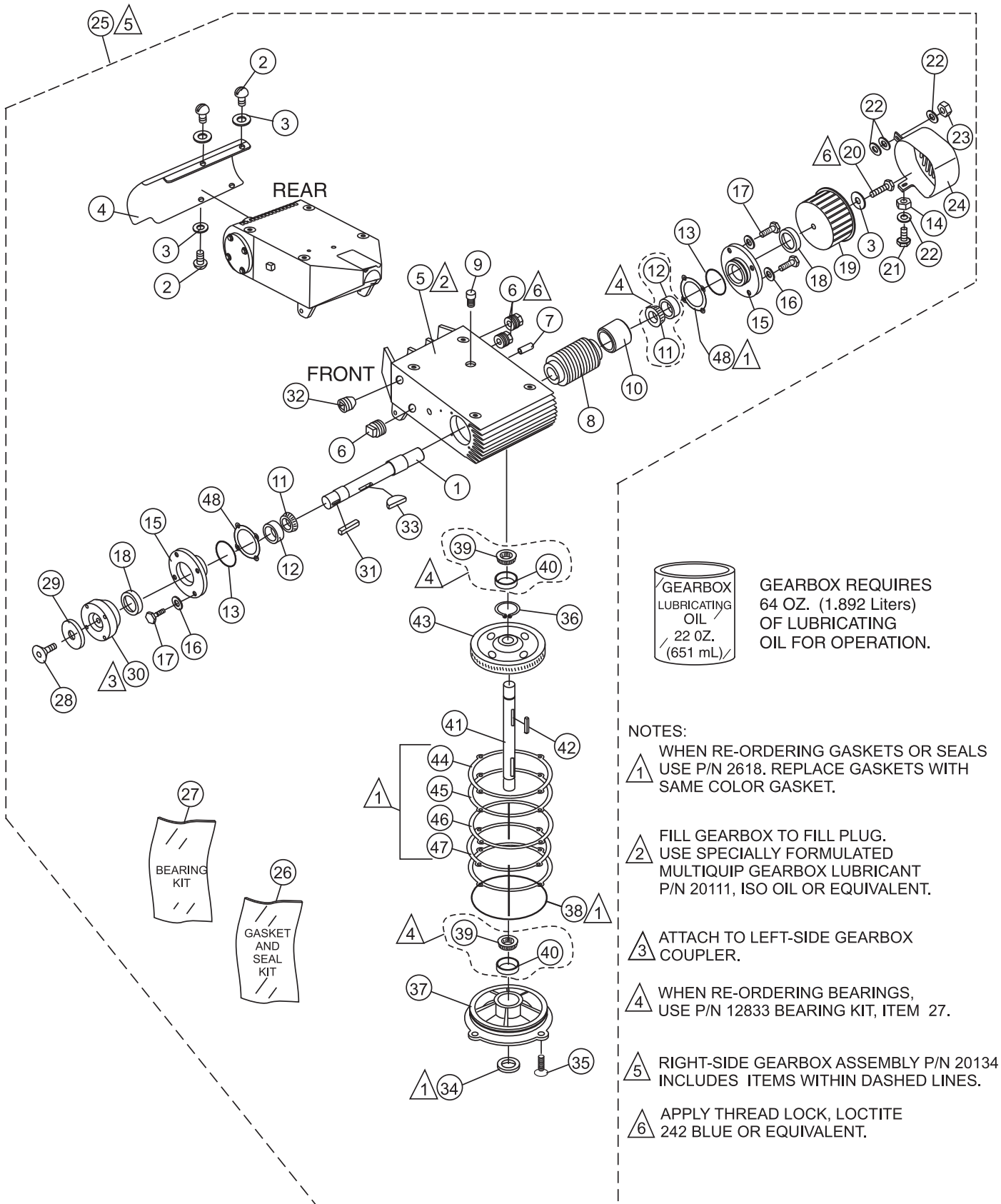
# STR36SP-SERIES — STEERING CONTROL ASSY. (LEFT AND RIGHT)

## STEERING CONTROL ASSY., (LEFT AND RIGHT)

<u>NO.</u>	<u>PART NO.</u>	<u>PART NAME</u>	<u>QTY.</u>	<u>REMARKS</u>
1	11146	NUT, HEX JAM 1/2-20 PLTD	2	
2	11142	ROD END, 1/2-20 MALE RH	2	
3	EM963105	SCREW, HHC 1/-13 X 2.....	4.....	REPLACES P/N 6159A
4	10176	NUT, NYLOC 1/2-13	4	
5	12625	ASSIST ASSEMBLY, STEERING	2	
6	0447	WASHER, FLAT 1/2 SAE	4	
7	2064	ROD END, 3/8-24 FEMALE RH	4	
8	0166A	WASHER, LOCK 3/8 MED	2	
9	1023	SCREW, HHC 3/8-16 X 1-1/4	16	
10	2199	NUT, HEX JAM 3/8-24	4	
11	2063	ROD END, 3/8-24 MALE RH	4	
12	10133	NUT, NYLOC 3/8-16	6	
13	11071-1	LEVER, STEERING CONTROL	2	
14	6014B	PIN, COTTER 3/32 X 1	2	
15	11275	PIN, 3/8 X 3 DIA CHN 100-2	2	
16	11072	BEARING, TORRINGTON JT69	4	
17	5228	ZERK, GREASE 45, 1/4-28 LONG	2	
18	1162A	CAP, GREASE ZERK #2 YELLOW	2	
20	10136	WASHER, FLAT 3/8 SAE	16	
22	11138	BEARING, HSG P-BLOCK 47MPB (2PC)	4	
23	11149	BEARING, SB-204-12	4	
24	12408	BUSHING, GARLOCK 12FDU12	4	
25	11265	WASHER, STEERING HANDLE	2	
26	2219	PIN, COTTER 1/8 X 1-1/2	2	
27	12651-1	STEERING CONTROL RS ASSIST	1	
28	12650-1	STEERING CONTROL LS ASSIST	1	

# STR36SP-SERIES — GEARBOX ASSY. (RIGHT SIDE)

## GEARBOX ASSY. (RIGHT SIDE)



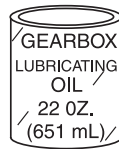
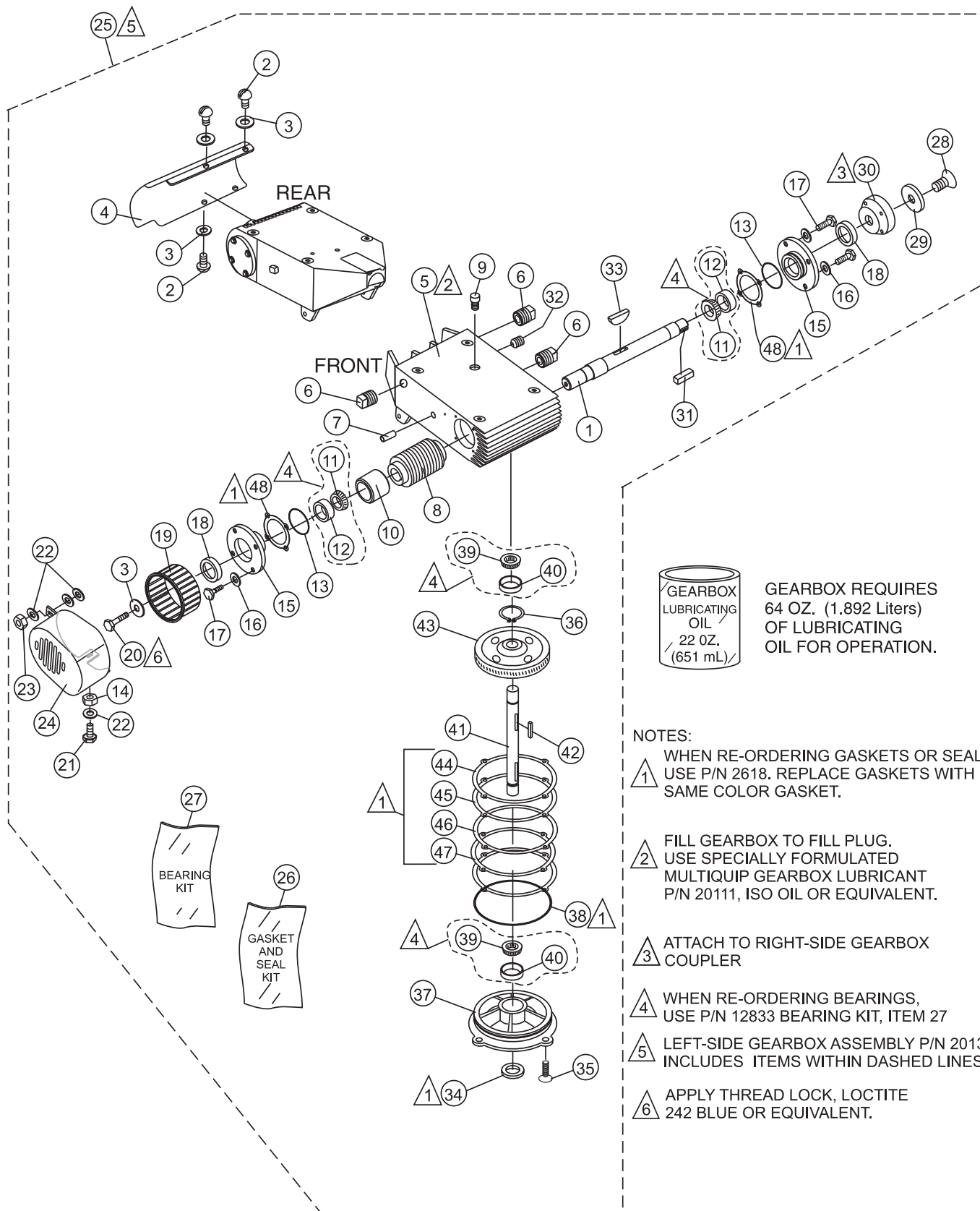
# STR36SP-SERIES — GEARBOX ASSY. (RIGHT SIDE)

## GEARBOX ASSY. (RIGHT SIDE)

<u>NO.</u>	<u>PART NO.</u>	<u>PART NAME</u>	<u>QTY.</u>	<u>REMARKS</u>
1%	20065	SHAFT, GEARBOX INPUT W/FAN	1	
2%	5031A	SCREW, RHM 1/4- 20 X 1/2	4	
3%	0948	WASHER, FLAT, 1/4 SAE	5	
4%	12981	SHROUD, GB FIN COVER, RIGHT	1	
5%	20353	GEAR BOX 1-1/8 SHAFT	1	
6%	0121A	FITTING, PLUG 3/8MP SQUARE HEAD	3	
7%	10989	STUD, N10- 32 X 3/4	1	
8%	12908	RIGHT HAND WORM	1	
9%	1132	VENT, AIR	1	
10%	12583	SPACER, X 11D X 1.168L	1	
11%	9045	BEARING, CONE TIMKEN #1986	1	
12%	0232A	BEARING, CUP, TIMKEN #1932	1	
13%	2309	O-RING, 2-13/16" VINTON	1	
14%	0937	NUT, HEX #10- 32	1	
15%	2307	FLANGE, COUNTERSHAFT	1	
16%	10031	WASHER, EXT SHKP 1/4	8	
17%	2295	SCREW, HHC 1/4- 20 X 7/8	8	
18%	12909	SEAL, OIL, NATIONAL #471689V	1	
19%	10921	FAN, RIGHT SIDE	1	
20%	0424	SCREW, HHC 1/4- 20 X 1-1/4	1	
21%	19477	SCREW, HHC, WASHER 10- 32 X 1/2	1	
22%	2203	WASHER, FLAT #10 SAE	5	
23%	10019	NUT, NYLOC 10- 32	1	
24%	10894	RIGHT SIDE FAN COVER	1	
25%	20134	GEARBOX ASSY., RS W/FAN .....	1	INCLUDES ITEMS W/%
26%	2618	GASKET AND SEAL KIT .....	1	INCLUDES ITEMS W/#
27%	12833	BEARING KIT .....	1	INCLUDES ITEMS W/+
28%	1313	SCREW, FHSC 3/8- 24 X 3/4 PLAIN	1	
29%	9120	RETAINER, DRIVEN PULLEY	1	
30%	2048	COUPLER- 7/8" ID	1	
31%	2323	KEY, 1/4 X 1/4 X 13/16	1	
32%	10450	SCREW, SHS 10- 32 X 1/4	1	
33%	1139	KEY, WOODRUFF #21 HARDENED	1	
34%	9041	SEAL, 1-1/8 DIA NAT # 471763V	1	
35%	1146	SCREW, FHS 5/16- 18 X 1 NYLOC	4	
36%	1138	RING, SNAP TRUARC #5100- 112	1	
37%	9036	COVER, GEARBOX 1-1/8 SHAFT	1	
38%	9038	O-RING, A- 264 VITON	1	
39%	0232	BEARING, CONE TIMKEN #15126	2	
40%	0232A	BEARING, CUP, TIMKEN #1932	2	
41%	20013	SHAFT, OUTPUT HD GEARBOX	1	
42%	9180	KEY, 5/16 X 2-1/4 HRDND	1	
43%	2001	GEAR, WORM GEAR LH. HD	1	
44%		GASKET, RED .....	1	SOLD AS KIT ONLY
45%		GASKET, GREEN .....	1	SOLD AS KIT ONLY
46%		GASKET, BLUE .....	1	SOLD AS KIT ONLY
47%		GASKET, BROWN .....	1	SOLD AS KIT ONLY
48%		GASKET, YELLOW .....	1	SOLD AS KIT ONLY
49	20111	OIL, MOBIL SHC 634 ISO VG640	64 OZ	

# STR36SP-SERIES — GEARBOX ASSY. (LEFT SIDE)

## GEARBOX ASSY. (LEFT SIDE)



GEARBOX REQUIRES  
64 OZ. (1,892 Liters)  
OF LUBRICATING  
OIL FOR OPERATION.

**NOTES:**

- ① WHEN RE-ORDERING GASKETS OR SEALS USE P/N 2618. REPLACE GASKETS WITH SAME COLOR GASKET.
- ② FILL GEARBOX TO FILL PLUG. USE SPECIALLY FORMULATED MULTIQUIP GEARBOX LUBRICANT P/N 20111, ISO OIL OR EQUIVALENT.
- ③ ATTACH TO RIGHT-SIDE GEARBOX COUPLER
- ④ WHEN RE-ORDERING BEARINGS, USE P/N 12833 BEARING KIT, ITEM 27
- ⑤ LEFT-SIDE GEARBOX ASSEMBLY P/N 20133 INCLUDES ITEMS WITHIN DASHED LINES.
- ⑥ APPLY THREAD LOCK, LOCTITE 242 BLUE OR EQUIVALENT.



# STR36SP-SERIES — GEARBOX ASSY. (LEFT SIDE)

## GEARBOX ASSY. (LEFT SIDE)

<u>NO.</u>	<u>PART NO.</u>	<u>PART NAME</u>	<u>QTY.</u>	<u>REMARKS</u>
1%	20065	SHAFT, GEARBOX INPUT W/FAN	1	
2%	5031A	SCREW, RHM 1/4- 20 X 1/2	4	
3%	0948	WASHER, FLAT, 1/4 SAE	5	
4%	12982	SHROUD, GB FIN COVER, LEFT	1	
5%	20353	GEAR BOX 1-1/8 SHAFT	1	
6%	0121A	FITTING, PLUG 3/8MP SQUARE HEAD	3	
7%	10989	STUD, N10- 32 X 3/4	1	
8%	12907	LEFT HAND WORM	1	
9%	1132	VENT, AIR	1	
10%	12583	SPACER, X 11D X 1.168L	1	
11%+	9045	BEARING, CONE TIMKEN #1986	1	
12%+	0232A	BEARING, CUP, TIMKEN #1932	1	
13%#	2309	O-RING, 2-13/16" VINTON	1	
14%	0937	NUT, HEX #10- 32	1	
15%	2307	FLANGE, COUNTERSHAFT	1	
16%	10031	WASHER, EXT SHKP 1/4	4	
17%	2295	SCREW, HHC 1/4- 20 X 7/8	4	
18%	12909	SEAL, OIL, NATIONAL #471689V	1	
19%	10922	FAN, LEFT SIDE	1	
20%	0424	SCREW, HHC 1/4- 20 X 1-1/4	1	
21%	19477	SCREW, HHC, WASHER 10- 32 X 1/2	1	
22%	2203	WASHER, FLAT #10 SAE	5	
23%	10019	NUT, NYLOC 10- 32	1	
24%	10893	LEFT SIDE FAN COVER	1	
25	20133	GEARBOX ASSY., LS W/FAN .....	1	INCLUDES ITEMS W/%
26%	2618	GASKET AND SEAL KIT .....	1	INCLUDES ITEMS W/#
27%	12833	BEARING KIT .....	1	INCLUDES ITEMS W/+
28%	1313	SCREW, FHSC 3/8- 24 X 3/4 PLAIN	1	
29%	9120	RETAINER, DRIVEN PULLEY	1	
30%	2048	COUPLER- 7/8" ID	1	
31%	2323	KEY, 1/4 X 1/4 X 13/16	1	
32%	10450	SCREW, SHS 10- 32 X 1/4	1	
33%	1139	KEY, WOODRUFF #21 HARDENED	1	
34%#	9041	SEAL, 1-1/8 DIA NAT # 471763V	1	
35%	1146	SCREW, FHS 5/16- 18 X 1 NYLOC	4	
36%	1138	RING, SNAP TRUARC #5100- 112	1	
37%	9036	COVER, GEARBOX 1-1/8 SHAFT	1	
38%#	9038	O-RING, A- 264 VITON	1	
39%+	0232	BEARING, CONE TIMKEN #15126	2	
40%+	0232A	BEARING, CUP, TIMKEN #1932	2	
41%	20013	SHAFT, OUTPUT HD GEARBOX	1	
42%	9180	KEY, 5/16 X 2-1/4 HRDND	1	
43%	2001	GEAR, WORM GEAR LH. HD	1	
44%#		GASKET, RED .....	1	SOLD AS KIT ONLY
45%#		GASKET, GREEN .....	1	SOLD AS KIT ONLY
46%#		GASKET, BLUE .....	1	SOLD AS KIT ONLY
47%#		GASKET, BROWN .....	1	SOLD AS KIT ONLY
48%#		GASKET, YELLOW .....	2	SOLD AS KIT ONLY
49	20111	OIL, MOBIL SHC 634 ISO VG640	64 OZ	



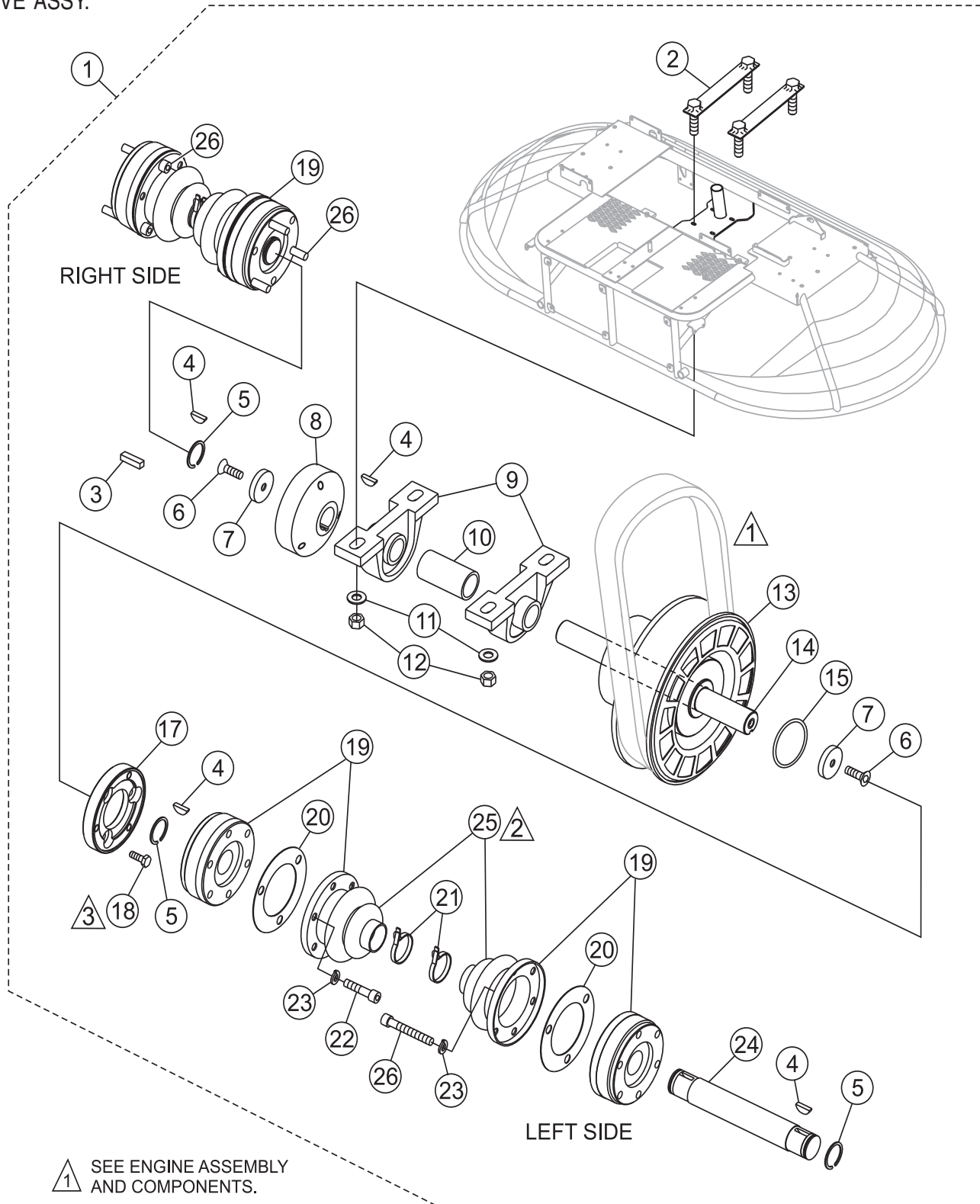
# STR36SP-SERIES — SINGLE PITCH HANDLE ASSY. (LEFT AND RIGHT)

## SINGLE PITCH HANDLE ASSY. (LEFT AND RIGHT)

<u>NO</u>	<u>PART NO</u>	<u>PART NAME</u>	<u>QTY.</u>	<u>REMARKS</u>
1#%+	4403	CRANK KNOB	2	
2#%+	3231	SPACER	2	
3#%+	2575	CRANK LEVER	2	
4#%+	1733	HARDENED WASHER	2	
5#%+	1616	SHOULDER BOLT	2	
6#%	2737	KNOB KIT .....	2	INCLUDES ITEMS W/+
7#%	2621	FITTING GREASE	2	
8#%	1162A	CAP, GREASE ZERK #2	2	
9#%	4014	SCREW, 2-3/16 P-K TYPE U DRIVE	4	
10#%	2332	DECAL, AL PITCH, LH	1	
11#%	2300	DECAL, AL PITCH, RH	1	
12#%	0185	SCREW, SHSS 3/8-16 X 3/8"	2	
13#	1617	LEVER ASSY, TROWEL ADJUSTMENT .....	2	INCLUDES ITEMS W/%
14#	2170	BEARING, RACE, TORR. #TRA1220	6	
15#	1604	BEARING, BALL THRUST E5 AETNA	2	
16#	1111	BEARING, ALUM.	2	
17#	2367	COLLAR, SET .75 X 1.25 X .56, 2 SET SCRW	2	
18#	2169	BEARING, THRUST, TORR. #NTA1220	2	
19#	10646	SHAFT, SPC CONTROL	2	
20#	10382	BOLT, SHOULDER, 3/8 X 3/8 LONG	2	
21#	10383	SLIDE BLOCK	2	
22#	10723	ROLL PIN	2	
23#	2008	CABLE ASSEMBLY 25.63	2	
24#	1116	BRASS JAM NUT	4	
25#	10548	PITCH CONTROL TUBE	2	
26#	0202	SCREW, HHC 5/16-18	8	
27#	0300B	FLAT WASHER 5/16"	8	
28#	5283	LOCK NUT 5/16-18	8	
29#	10512	SNAP RING	2	
30	11109-1	PITCH ASSY. ....	2	INCLUDES ITEMS W/#

# STR36SP-SERIES — DRIVE ASSY.

DRIVE ASSY.



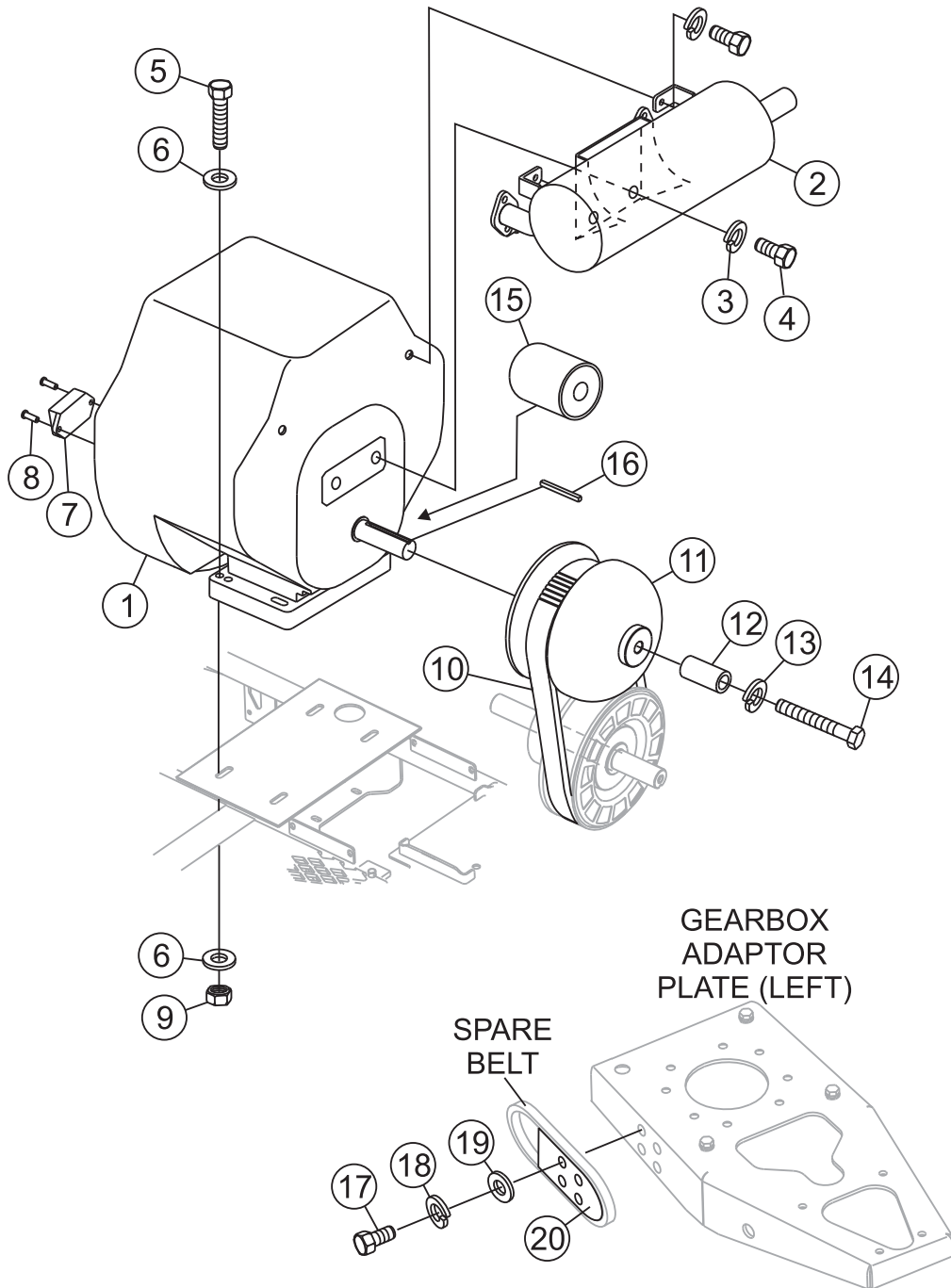
# STR36SP-SERIES — DRIVE ASSY.

## DRIVE ASSY.

<u>NO.</u>	<u>PART NO.</u>	<u>PART NAME</u>	<u>QTY.</u>	<u>REMARKS</u>
1	20077	DRIVE ASSEMBLY .....	1	INCLUDES ITEMS W/%
2%	20186	PLATE, BEARING MOUNT	2	
3%	10909	KEY, 3/16 X 11/16	1	
4%	0126	KEY, WOODRUFF #9	4	
5%	2090	RING, SNAP TRUARC #5100- 106	4	
6%	1146	SCREW, FHSC 5/16- 18 X 1 NYLOC	2	
7%	2037	WASHER, RETAINING	2	
8%	2029	COUPLER, 1 ID. RIDER	1	
9%	10337	BEARING, PILLOW BLOCK FAF YAK- 1	2	
10%	20076	SPACER, BEARING SHAFT	1	
11%	10136	WASHER, FLAT 3/8 SAE	4	
12%	10133	NUT, NYLOC 3/8- 16	4	
13%	20137	PULLEY, CVT LOWER COMET 302535C	1	
14%	20069	SHAFT, DRIVE BEARING	1	
15%	20116	O-RING, SIZE- 031 BUNA N	1	
17%	12590	COUPLER, CV JOINT COMET CLUTCH	1	
18%	20056	SCREW, HHC 1/4- 28 X 3/4 GRD. 8	3	
19%	2052	JOINT, CV W/BOOT .....	4	INCLUDES ITEMS W/*
20%	11108	GASKET, CV JOINT BOOT	4	
21%	1662	TIE WRAP, CABLE BLACK	4	
22%	0243	SCREW, SHC 5/16- 18 X 1-3/4	3	
23%	0161C	WASHER, LOCK, 5/16 MEDIUM	12	
24%	2071	SHAFT, CV JOINT, 7.44LG	2	
25%*	2259	BOOT, CV JOINT	4	
26%	2186	SCREW, SHC 5/16-18 X 2-1/4 PLTD	4	

# STR36SP-SERIES — MUFFLER/BELT ASSY.

MUFFLER/BELT ASSY.



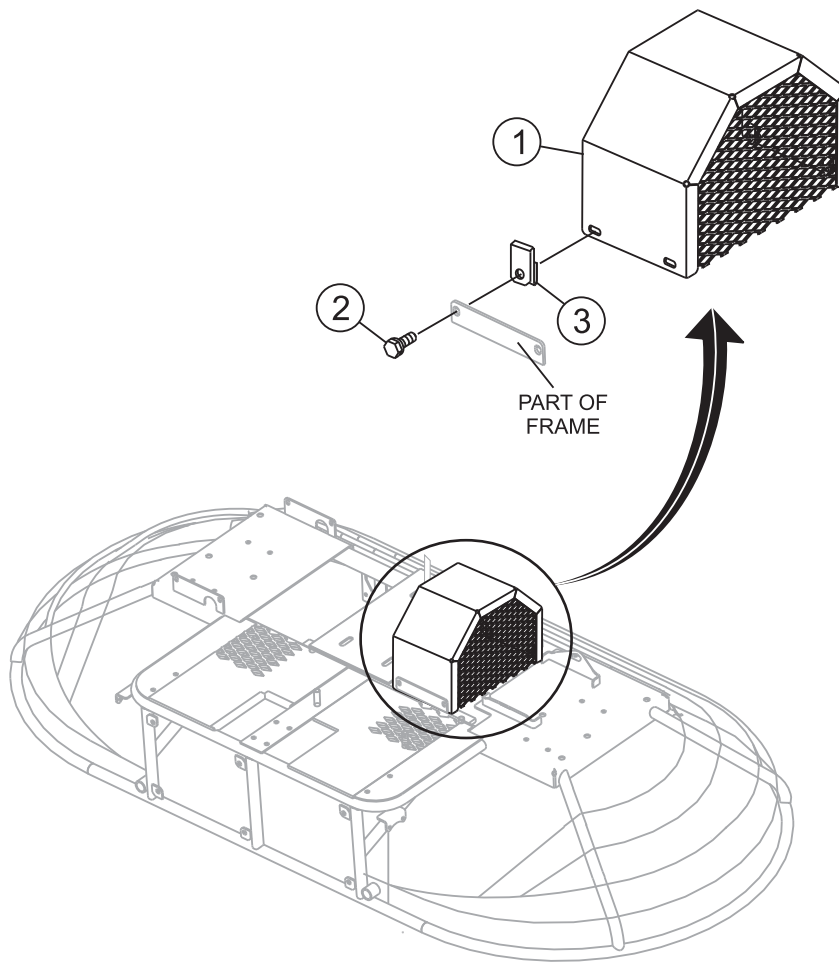
## STR36SP-SERIES — MUFFLER/BELT ASSY.

### MUFFLER/BELT ASSY.

<u>NO.</u>	<u>PART NO.</u>	<u>PART NAME</u>	<u>QTY.</u>	<u>REMARKS</u>
1	20216	ENGINE, HONDA 24 HP GX670	1	
2	20336	MUFFLER, 24 HONDA	1	
3	0160C	WASHER, LOCK 5/16 MEDIUM	4	
4	2299	SCREW, HHC M8-1.25 X 16MM	4	
5	0300A	SCREW, HHC 5/16-18 X 2	4	
6	19470	WASHER, FLAT 5/16 USS	8	
7	2655	HOUR METER	1	
8	8239	RIVET, POP 1/8 DIA X .400 ALUMINUM	2	
9	5283	NUT, NYLOC 5/16-18	4	
10	20138	BELT, CVT COMET 302609 DF	1	
11	12877	CLUTCH, CVT - 1 1/9 COMET 302533C	1	
12	20265	SPACER, 1.250 DIA X .188 W X 2.3 LONG	1	
13	2955	WASHER, LOCK, 7/16 ZINC	1	
14	20264	SCREW, HHC 7/16-20 UNF X 3 1/2	1	
15	15410ZJ4999AH	FILTER, OIL	1	
16	300518C	KEY	1	
17	0131A	SCREW, HHC 1/4-20 X 3/4	4	
18	0181B	WASHER, LOCK, 1/4 MED	4	
19	0948	WASHER, FLAT 1/4 SAE	4	
20	2429	HOLDER, SPARE BELT	1	

# STR36SP-SERIES — BELT GUARD ASSY.

BELT GUARD ASSY.





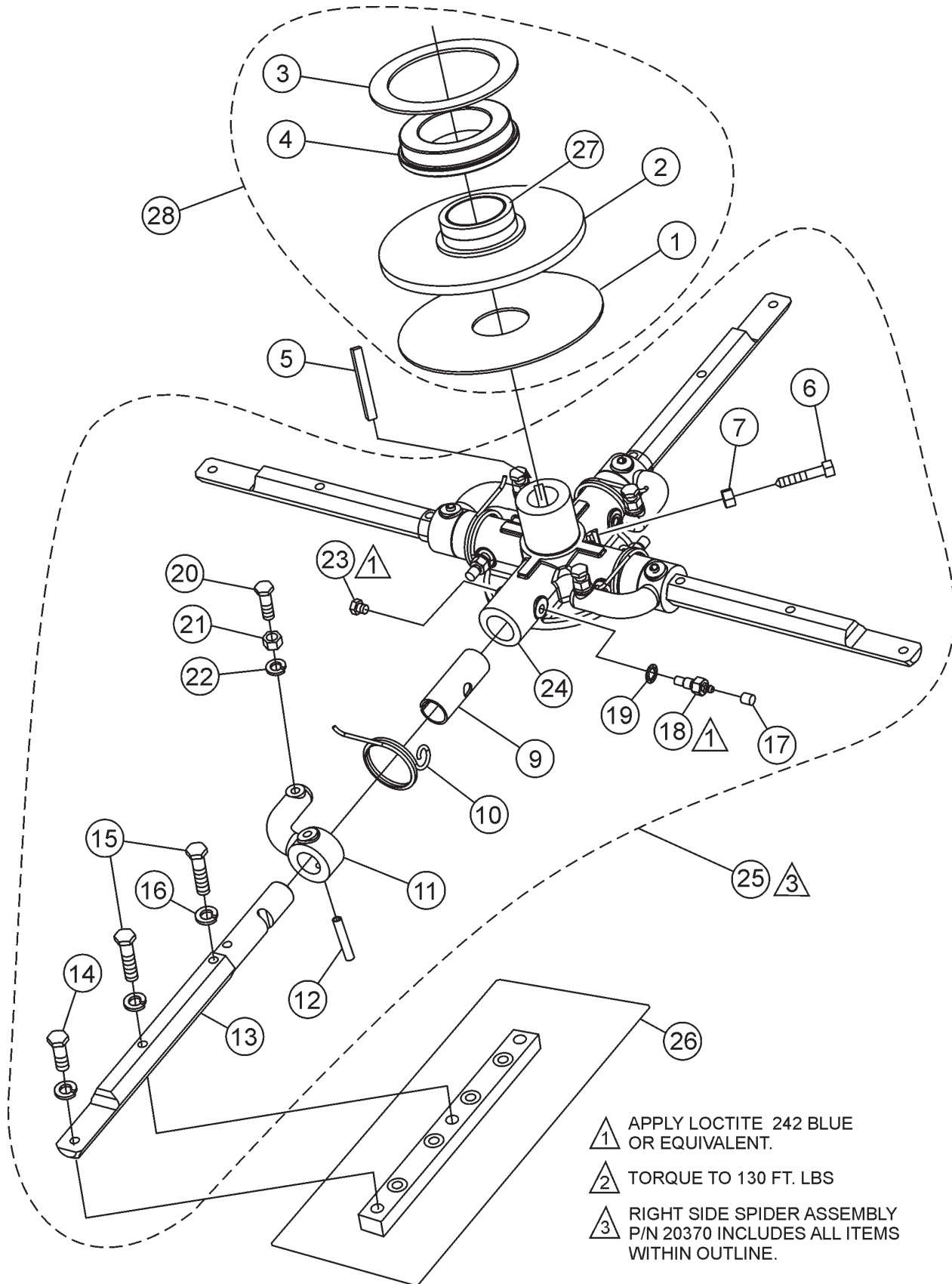
# STR36SP-SERIES — BELT GUARD ASSY.

BELT GUARD ASSY.

<u>NO.</u>	<u>PART NO.</u>	<u>PART NAME</u>	<u>QTY.</u>	<u>REMARKS</u>
1	20100	BELT GUARD	1	
2	11819	SCREW, HHC W/WASHER 1/4-20 X 3/4	4	
3	11534	NUT, U-TYPE 1/4-20	4	

# STR36SP-SERIES — SPIDER ASSY. (RIGHT)

## SPIDER ASSY. (RIGHT)



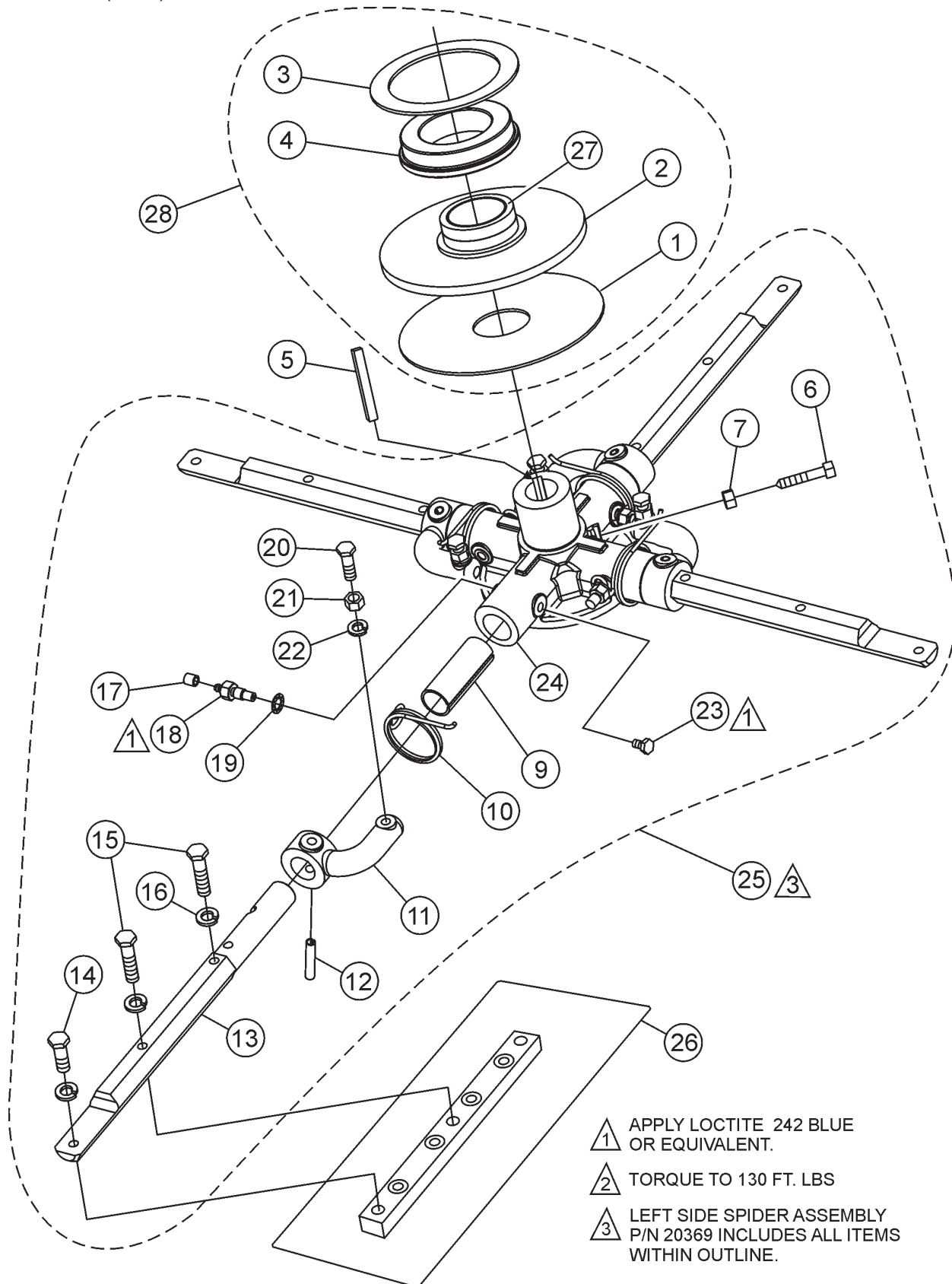
## STR36SP-SERIES — SPIDER ASSY. (RIGHT)

### SPIDER ASSY. (RIGHT)

<u>NO.</u>	<u>PART NO.</u>	<u>PART NAME</u>	<u>QTY.</u>	<u>REMARKS</u>
1%	1154A	PLATE, WEAR THRUST COLLAR	1	
2%	10793-1	THRUST COLLAR W/ BUSHING .....	1	INCLUDES ITEMS W/+
3%	12208	WEAR RING	1	
4%	12778	BEARING, THRUST 6013 2RSW/ FLANGE	1	
5	1141	KEY, 5/16 SQ. X 2-5/8	1	
6*	12097	SCREW, SQHS 3/8- 16 X 1-3/4 CONE 8	1	
7*	1456	NUT, HEX FINISH 3/8- 16	1	
9*	1157A	BUSHING, TROWEL ARM	4	
10*	1317	SPRING, RH TROWEL ARM LEVER	4	
11*	1163	LEVER, TROWEL ARM RIGHT HAND	4	
12*	4164	PIN, ROLL 5/16 X 1-3/4	4	
13*	20408	ARM, TROWEL RIGHT	4	
14*	0202	SCREW, HHC 5/16-18 X 1	4	
15*	0105	SCREW, HHC 5/16-18 X 1-1/2	8	
16*	0161C	WASHER, LOCK, 5/16 MED	12	
17*	1162A	CAP, GREASE ZERK #2	4	
18*	1322	SCREW ASSY. , ARM RETAINING	4	
19*	1875	WASHER, INT. SHKP. 3/8	4	
20*	0164B	SCREW, TROWEL ADJUSTMENT	4	
21*	1876	NUT, HEX JAM 3/8- 16 CLASS 2B	4	
22*	0166A	WASHER, LOCK, 3/8 MEDIUM	4	
23*#	11602	SCREW, HHC 3/8-16 X 1/4 .....	4	REPLACES P/N 2218
24*	12477	SPIDER, KIT .....	1	INCLUDES ITEMS W/#
25	20370-1	PLATE KIT, SPIDER ASSEMBLY RIGHT SIDE .....	1	INCLUDES ITEMS W/*
26	20415	BLADE ASSEMBLY	4	
27%+	1471	THRUST COLLAR BUSHING	1	
28	10968	THRUST COLLAR ASSY. ....	1	INCLUDES ITEMS W/%

# STR36SP-SERIES — SPIDER ASSY. (LEFT)

## SPIDER ASSY. (LEFT)



- ▲ 1 APPLY LOCTITE 242 BLUE OR EQUIVALENT.
- ▲ 2 TORQUE TO 130 FT. LBS
- ▲ 3 LEFT SIDE SPIDER ASSEMBLY P/N 20369 INCLUDES ALL ITEMS WITHIN OUTLINE.

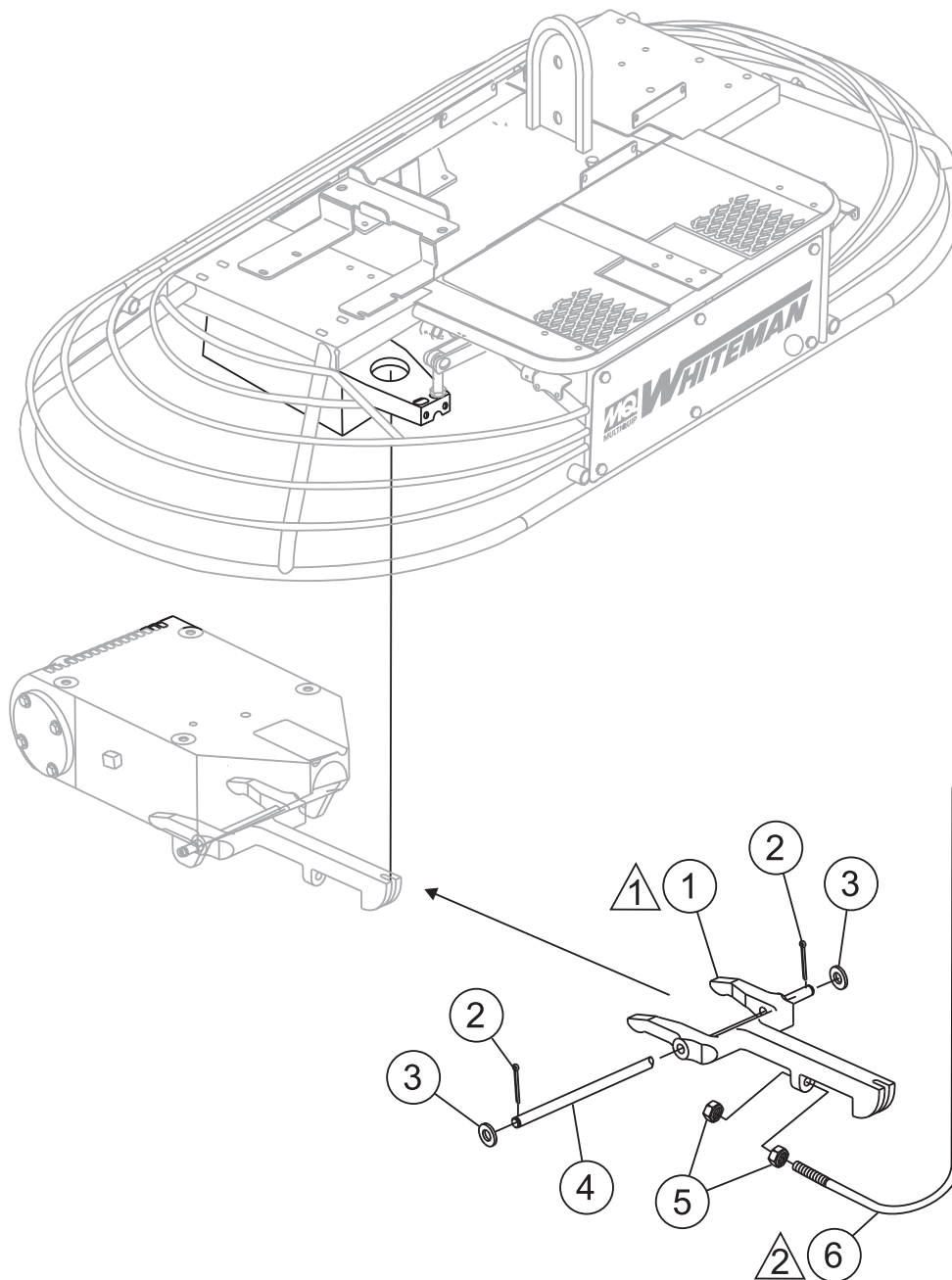
# STR36SP-SERIES — SPIDER ASSY. (LEFT)

## SPIDER ASSY. (LEFT)

<u>NO.</u>	<u>PART NO.</u>	<u>PART NAME</u>	<u>QTY.</u>	<u>REMARKS</u>
1%	1154A	PLATE, WEAR THRUST COLLAR	1	
2%	10793-1	THRUST COLLAR W/ BUSHING .....	1	INCLUDES ITEMS W/+
3%	12208	WEAR RING	1	
4%	12778	BEARING, THRUST 6013 2RSW/ FLANGE	1	
5	1141	KEY, 5/16 SQ. X 2-5/8	1	
6*	12097	SCREW, SQHS 3/8- 16 X 1-3/4 CONE 8	1	
7*	1456	NUT, HEX FINISH 3/8- 16	1	
9*	1157A	BUSHING, TROWEL ARM	4	
10*	1316	SPRING, LH TROWEL ARM LEVER	4	
11*	1555	LEVER, TROWEL ARM LEFT HAND	4	
12*	4164	PIN, ROLL 5/16 X 1-3/4	4	
13*	20409	ARM, TROWEL LEFT	4	
14+	0202	SCREW, HHC 5/16-18 X 1	4	
15+	0105	SCREW, HHC 5/16-18 X 1-1/2	8	
16+	0161C	WASHER, LOCK, 5/16 MED	12	
17*	1162A	CAP, GREASE ZERK #2	4	
18*	1322	SCREW ASSY. , ARM RETAINING	4	
19*	1875	WASHER, INT. SHKP. 3/8	4	
20*	0164B	SCREW, TROWEL ADJUSTMENT	4	
21*	1876	NUT, HEX JAM 3/8- 16 CLASS 2B	4	
22*	0166A	WASHER, LOCK, 3/8 MEDIUM	4	
23#*	11602	SCREW, HHC 3/8-16 X 1/4 .....	4	REPLACES P/N 2218
24*	12477	SPIDER, KIT .....	1	INCLUDES ITEMS W/#
25	20369-1	PLATE KIT, SPIDER ASSEMBLY RIGHT SIDE .....	1	INCLUDES ITEMS W/*
26	20415	BLADE ASSEMBLY	4	
27%+	1471	THRUST COLLAR BUSHING	1	
28	10968	THRUST COLLAR ASSY. ....	1	INCLUDES ITEMS W/%

# STR36SP-SERIES — YOKE ASSY.

YOKE ASSY.



## NOTES:

△ 1 LEFT AND RIGHT YOKE ASSEMBLIES IDENTICAL.

△ 2 SEE PITCH ASSEMBLY.

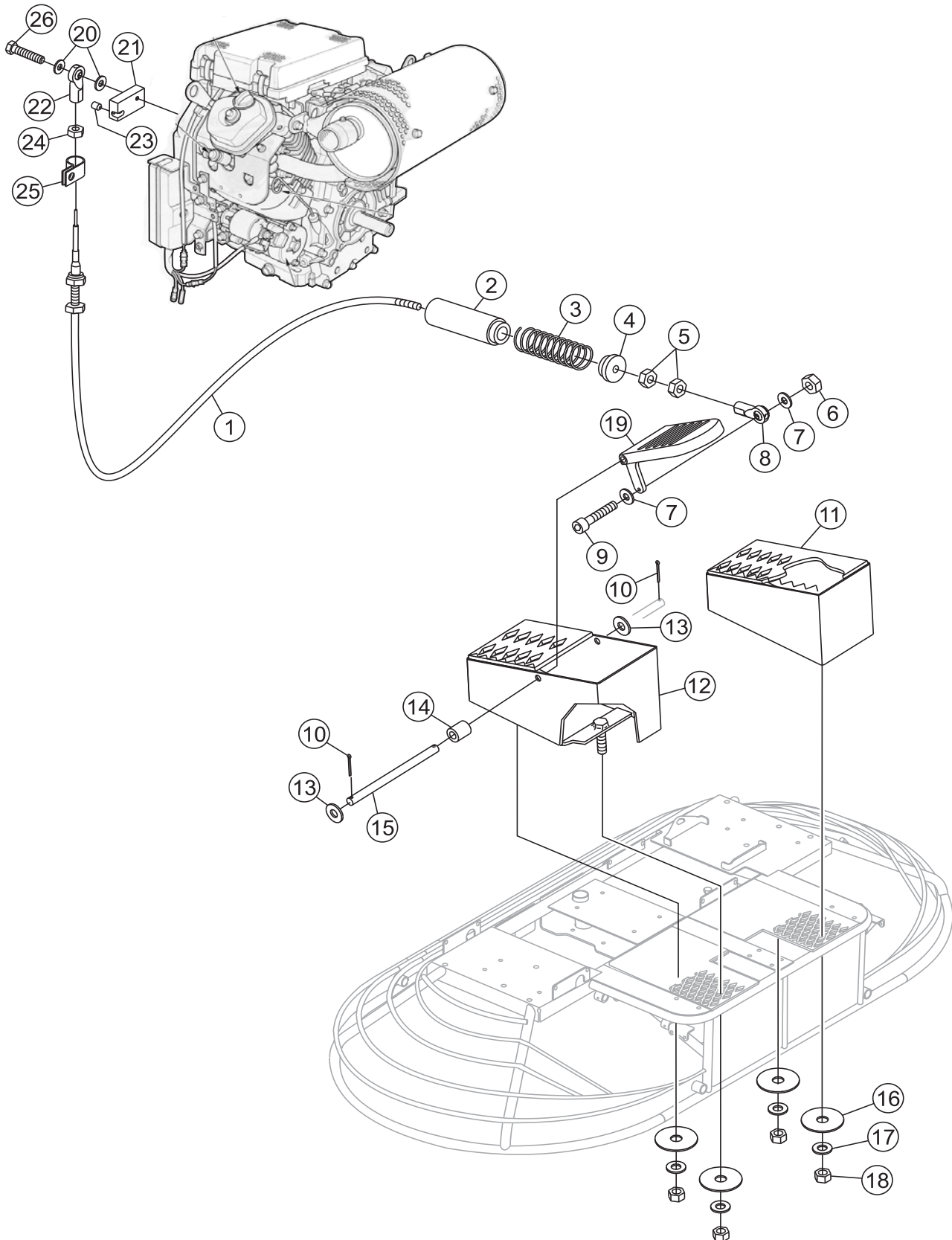
## STR36SP-SERIES — YOKE ASSY.

YOKE ASSY.

<u>NO.</u>	<u>PART NO.</u>	<u>PART NAME</u>	<u>QTY.</u>	<u>REMARKS</u>
1	9027	YOKE	2	
2	0683	PIN, COTTER 3/32 X 3/4	4	
3	10136	WASHER, FLAT 3/8 SAE	4	
4	9028	PIN, YOKE	2	
5	1116	NUT, BRASS JAM 5/16-18	4	
6	2008	CABLE ASSEMBLY 25.63	2	

# STR36SP-SERIES — FOOT PEDALS/THROTTLE ASSY.

FOOT PEDALS/THROTTLE ASSY.





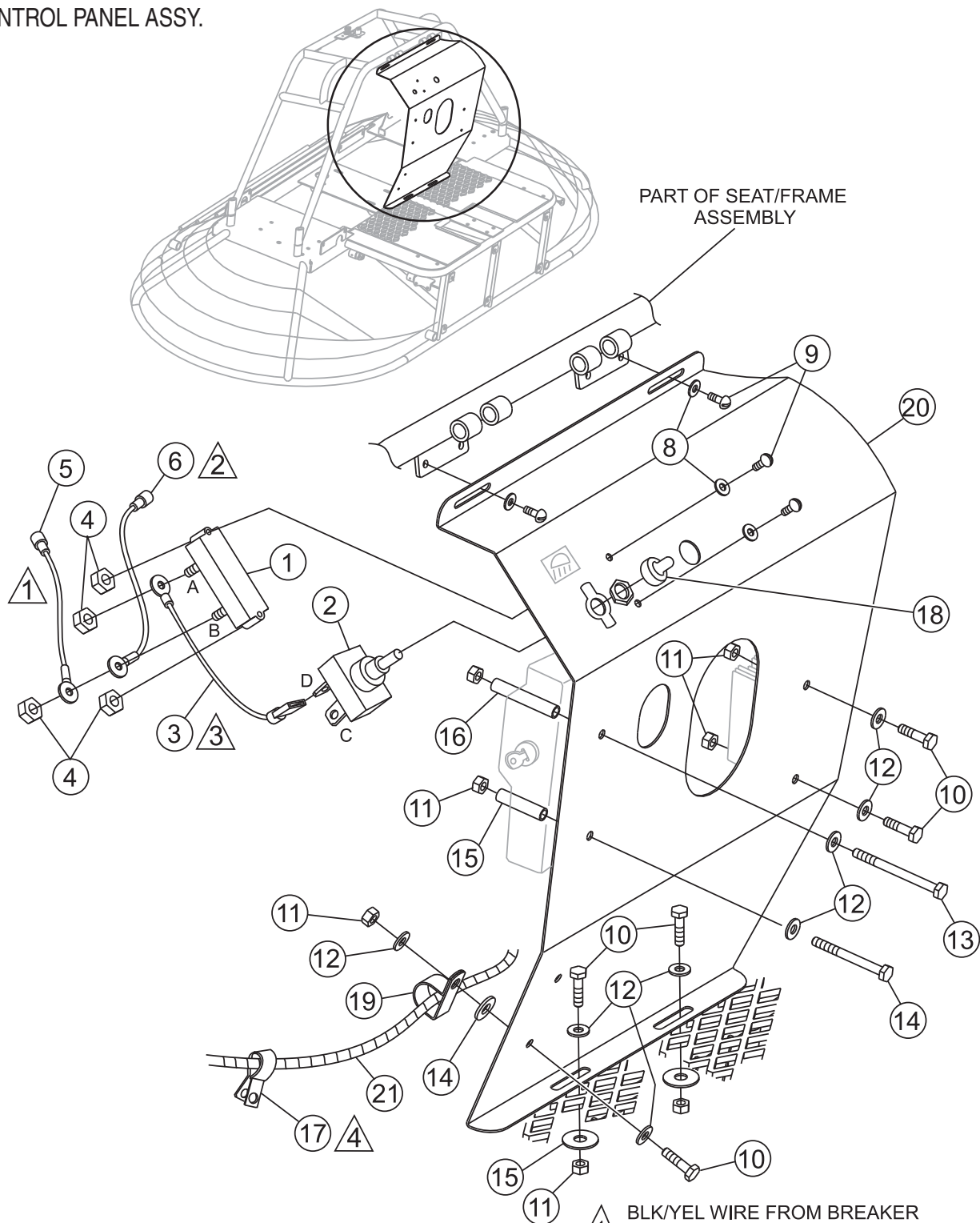
## STR36SP-SERIES — FOOT PEDALS/THROTTLE ASSY.

### FOOT PEDALS/THROTTLE ASSY.

<u>NO.</u>	<u>PART NO.</u>	<u>PART NAME</u>	<u>QTY.</u>	<u>REMARKS</u>
1	20348	CABLE, CONTROL 10-32 X 33 LONG	1	
2	2754	ADAPTER, THROTTLE SPRING, LONG	1	
3	2753	SPRING, THROTTLE RETURN	1	
4	2755	ADAPTER, THROTTLE SPRING, SHORT	1	
5	0937	NUT, HEX 10-32 ZINC PLTD	2	
6	10019	NUT, NYLOC 10- 32	1	
7	2203	WASHER, FLAT #10 SAE	2	
8	2153	ROD END, 10- 32 FEMALE RIGHT HAND	1	
9	10018	SCREW, SHC 10- 32 X 1	1	
10	6014B	PIN, COTTER 3/32 X 1	2	
11	12657-1	RISER, LEFT FOOT	1	
12	12656-1	RISER, RIGHT FOOT	1	
13	10136	WASHER, FLAT 3/8 SAE	2	
14	3083	SPACER, 3/4 X 3/8 X 7/8 LONG	1	
15	2772	PIN, ACCELERATOR PEDAL	1	
16	3233	WASHER, FENDER 1.50D X 3/8 ID	4	
17	0300B	WASHER, FLAT 5/16 SAE	4	
18	5283	NUT, NYLOC 5/16-18	4	
19	2086	PEDAL ACCELERATOR	1	
20	2203	WASHER, FLAT #10 SAE	2	
21	20335	LEVER, ENGINE CONTROL	1	
22	2153	ROD END, 10-32 FEMALE RH	1	
23	10450	SCREW, SHS 10-32 X 1/4	1	
24	0937	NUT, HEX 10-32	1	
25	19473	CLAMP, HOSE WORM #2 1/4 TO 5/8	1	
26	3513	SCREW, HHC 10-32 X 1	1	

# STR36SP-SERIES — CONTROL PANEL ASSY.

CONTROL PANEL ASSY.



- 1 △ BLK/YEL WIRE FROM BREAKER TERMINAL "B" TO HONDA BLK/YEL WIRE.
- 2 △ BLK/YEL WIRE FROM BREAKER TERMINAL "A" TO HONDA BLK/YEL WIRE.
- 3 △ WHITE WIRE FROM LIGHT SWITCH TERMINAL "D" TO BREAKER TERMINAL "B".
- 4 △ INSTALL CLAMP TO SCREW ON ENGINE.

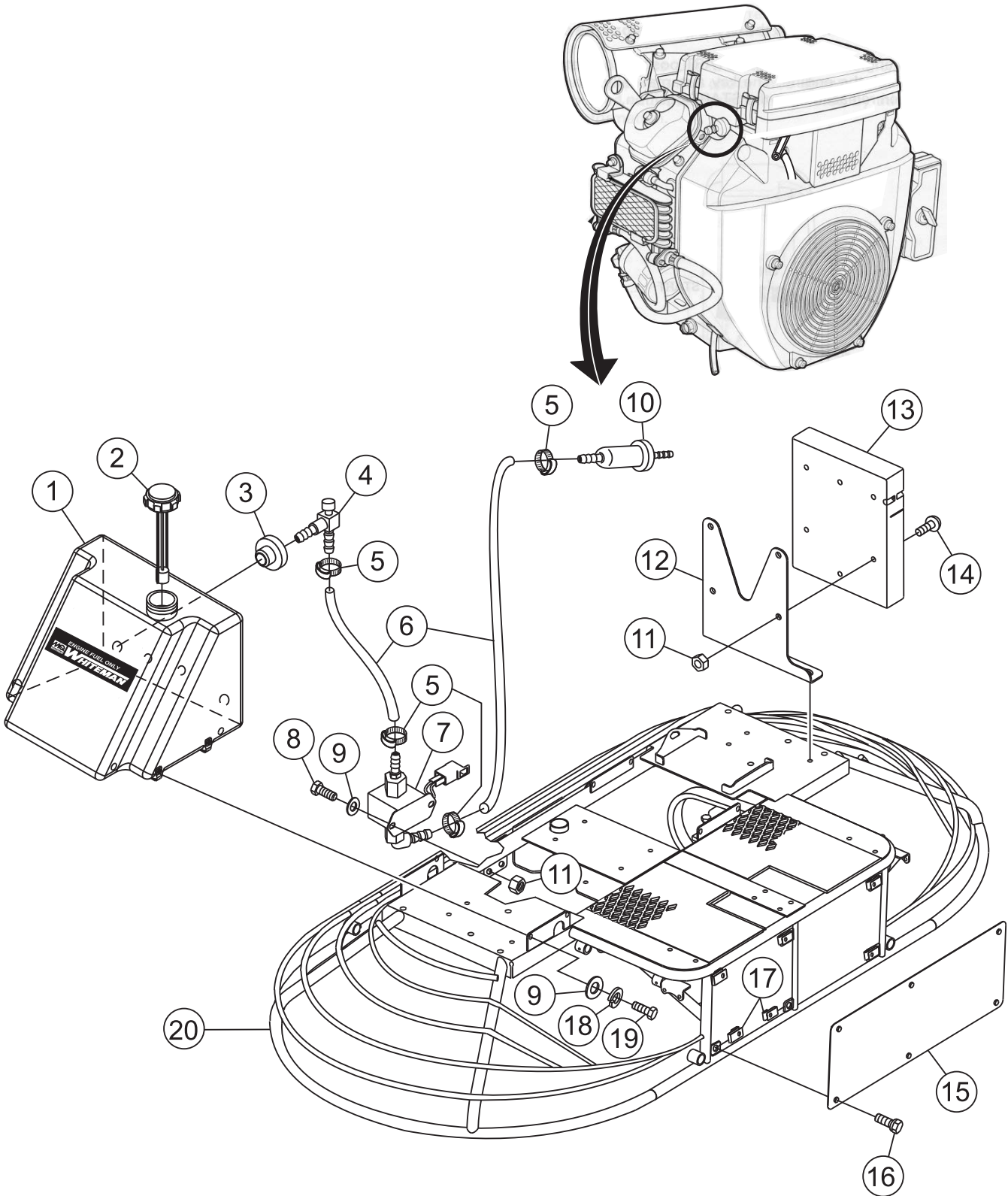
## STR36SP-SERIES — CONTROL PANEL ASSY.

### CONTROL PANEL ASSY.

<u>NO.</u>	<u>PART NO.</u>	<u>PART NAME</u>	<u>QTY.</u>	<u>REMARKS</u>
1	2673	CIRCUIT BREAKER, 30A, 12V	1	
2	4682	SWITCH, TOGGLE ELECTRIC #9061	1	
3	20344	WIRE ASSEMBLY, 16 GA. X 5"	1	
4	10019	NUT, NYLOC 10- 32	4	
5	20342	WIRE ASSEMBLY, 16 GA. X 7"	1	
6	20343	WIRE ASSEMBLY, 16 GA. X 10"	1	
8	2203	WASHER, FLAT #10 SAE	4	
9	5065B	SCREW, RHM 10- 32 X 1/2	4	
10	0730	SCREW, HHC 1/4- 20 X 1	5	
11	10024	NUT, NYLOC 1/4- 20	7	
12	0948	WASHER, FLAT, 1/4 SAE	8	
13	19380	SCREW, HHC 1/4- 20 X 3 PLTD	1	
14	4538	SCREW, HHC 1/4- 20 X 2-1/2	1	
15	20341	SPACER, .38 OD X .05 X 1.56	1	
16	20340	SPACER, .38 OD X .05 W X 2.19	1	
17	8125	CLAMP, HOSE SUPPORT, 5/8	1	
18	8381	BOOT, TOGGLE SWITCH	1	
19	11505	CLAMP, HOSE SUPPORT 1/2 INCH LONG	1	
20	20339-1	CONTROL PANEL	1	
21	20419	HARNESS, WIRE HONDA RIDER	1	

# STR36SP-SERIES — FRAME/FUEL ASSY.

FRAME/FUEL ASSY.



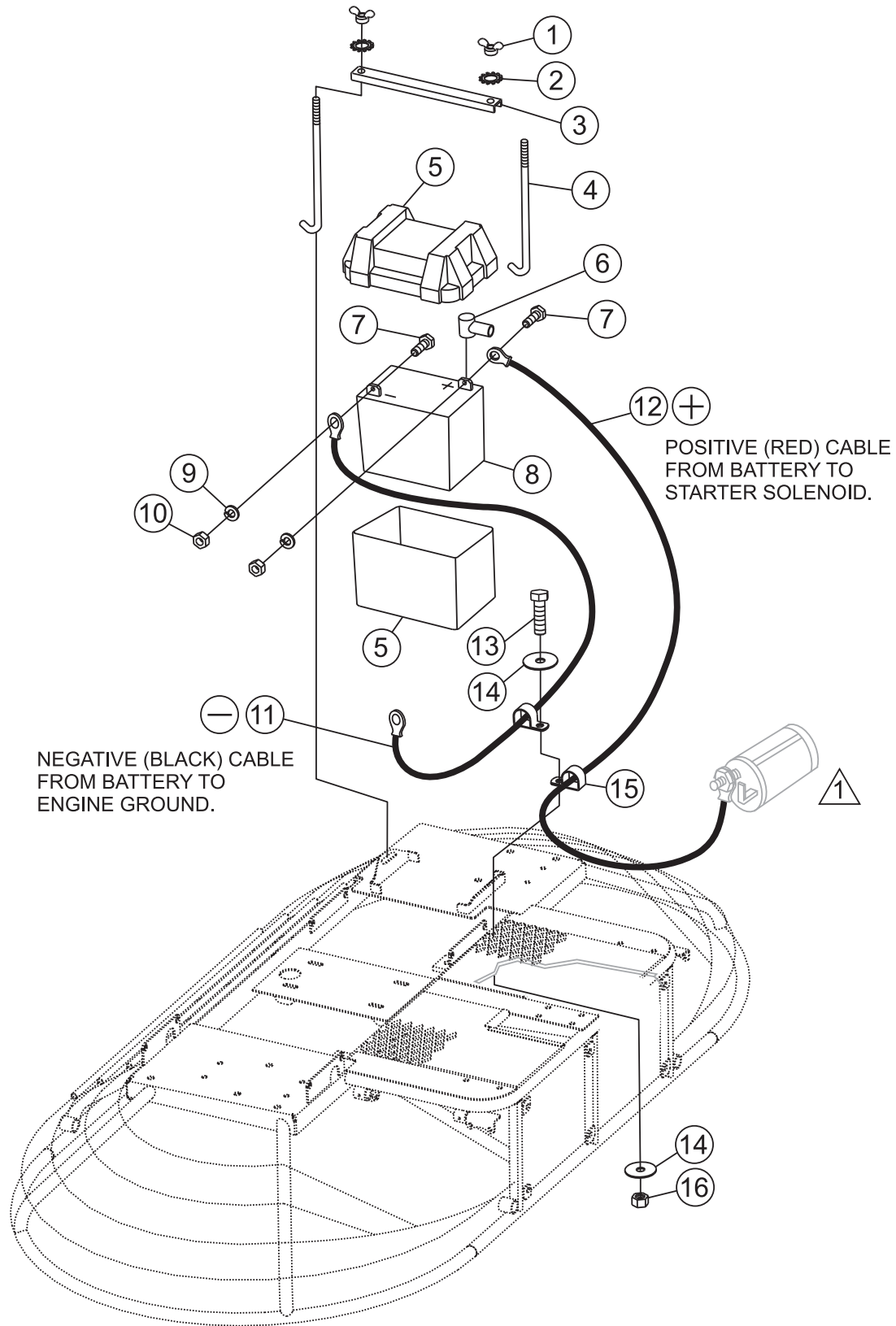
# STR36SP-SERIES — FRAME/FUEL ASSY.

FRAME/FUEL ASSY.

<u>NO.</u>	<u>PART NO.</u>	<u>PART NAME</u>	<u>QTY.</u>	<u>REMARKS</u>
1	12404	TANK, FUEL FIVE GALLON	1	
2	11418	FUEL CAP/GAUGE (10.5)	1	
3	19633	BUSHING, RUBBER FUEL	1	
4	20795	VALVED, SCREENED DAPCO	1	
5	19473	CLAMP, WORM HOSE, #4 (1/4- 5/8)	3	
6	60013	HOSE, RUBBER FUEL 0.25 ID .....	2	SOLD IN FT. LENGTHS
7	20907	FUEL PUMP ASSEMBLY	1	
8	4514	SCREW, HHC 1/4-20 X 5/8	2	
9	0948	WASHER, FLAT, 1/4 SAE	6	
10	16910ZE8015	FILTER, FUEL	1	
11	10024	NUT, NYLOC 1/4- 20	4	
12	20366	BRACKET, OP MANUAL BOX	1	
13	29057	DOCUMENT BOX, (CP90007- 07)	1	
14	12287	SCREW, THP 1/4- 20 X 3/4 SS	4	
15	20943-1	FRONT PANEL .....	1	REPLACES P/N 2818
16	11819	SCREW, HHC, WASHER 1/4- 20 X 3/4	6	
17	11534	NUT U-TYPE 1/4- 20	6	
18	0181B	WASHER, LOCK, 1/4 MED	6	
19	4514	SCREW, HHC 1/4- 20 X 5/8	4	
20	20014-1	FRAME	1	

# STR36SP-SERIES — BATTERY ASSY.

## BATTERY ASSY.



1 SEE STARTER MOTOR ASSY.

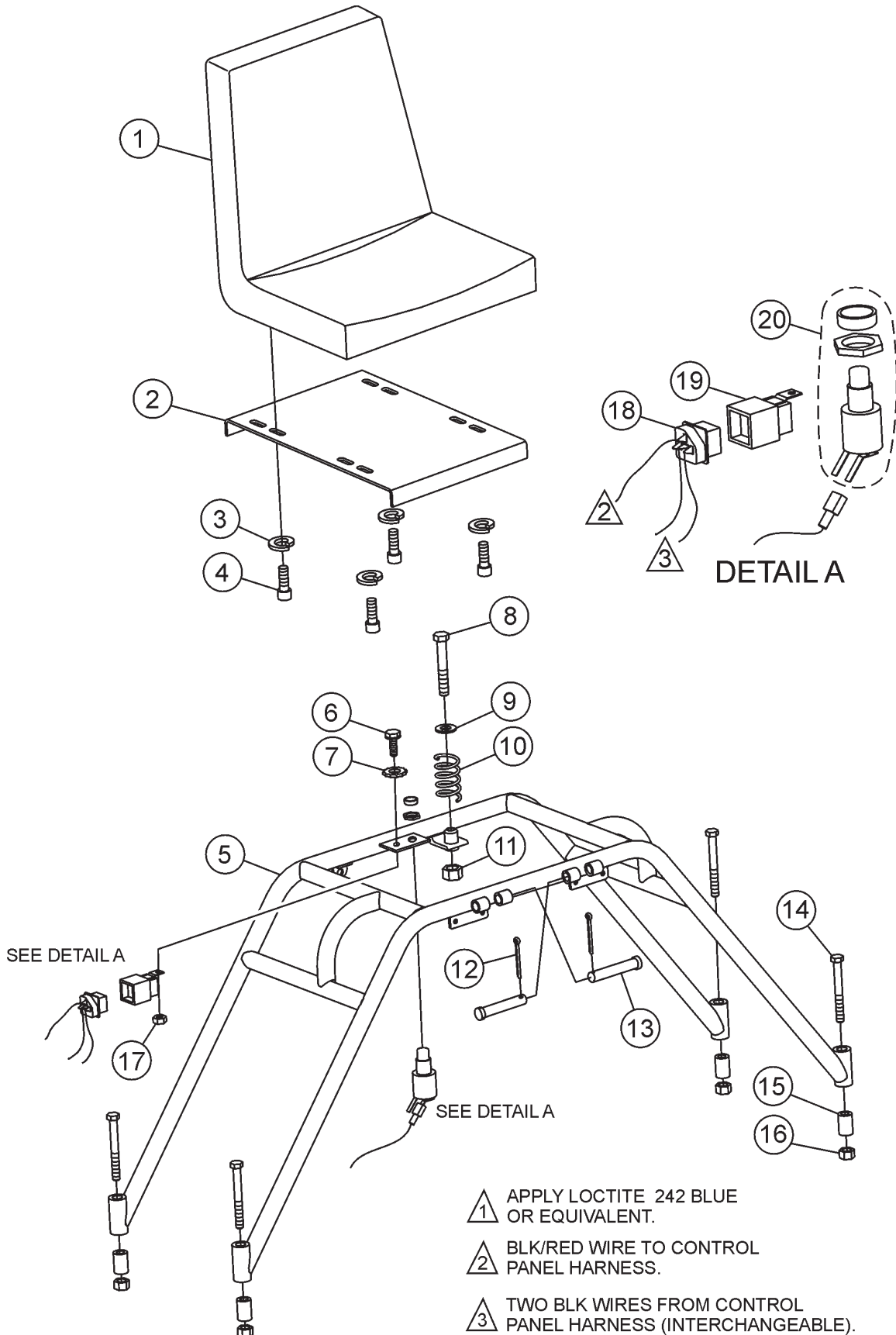
## STR36SP-SERIES — BATTERY ASSY.

### BATTERY ASSY.

<u>NO.</u>	<u>PART NO.</u>	<u>PART NAME</u>	<u>QTY.</u>	<u>REMARKS</u>
1	2509	WING NUT, PLATED	2	
2	10031	WASHER, EXT SHKP 1/4	2	
3	20356	BRACKET BATTERY HOLD- DOWN	1	
4	20194	BOLT, BATTERY HOLD DOWN	2	
5	2449	BOX, BATTERY GR UI	1	
6	2762	BOOT, TERMINAL	1	
7	0131A	SCREW, HHC 1/4- 20 X 3/4	2	
8	4671	BATTERY, GR. UI WET W /TAG	1	
9	0181B	WASHER, LOCK, 1/4 MEDIUM	2	
10	0949	NUT, HEX FINISH 1/4- 20	2	
11	12022	CABLE, NEG 20- 1/2	1	
12	12675	CABLE, POS. BATTERY, 36'	1	
13	2623	SCREW, HHC 5/16- 18 X 1- 1/4	1	
14	3233	WASHER, FINDER 1.5 OD X 3/8 ID	2	
15	11505	CLAMP, HOSE SUPPORT 1/2 INCH LONG	2	
16	5283	NUT, NYLOC 5/16- 18	1	

# STR36SP-SERIES — SEAT FRAME ASSY.

## SEAT FRAME ASSY.





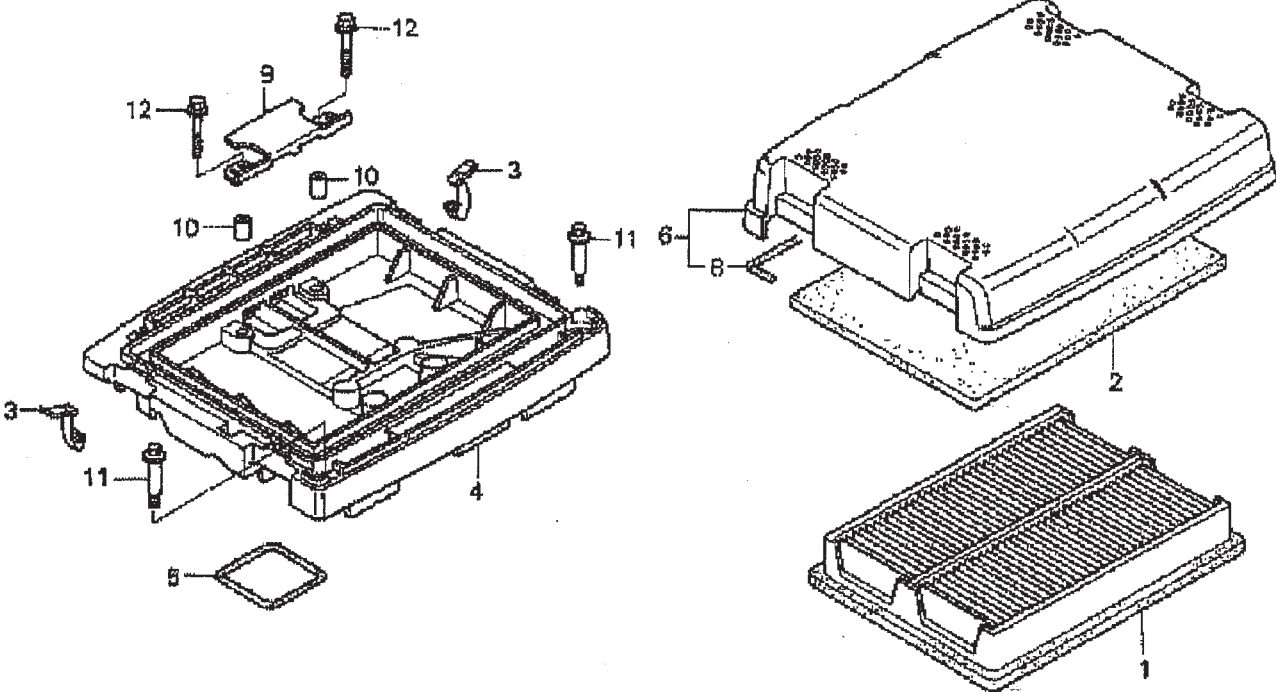
## STR36SP-SERIES — SEAT FRAME ASSY.

### SEAT FRAME ASSY.

<u>NO.</u>	<u>PART NO.</u>	<u>PART NAME</u>	<u>QTY.</u>	<u>REMARKS</u>
1	21861	SEAT, MICHIGAN-ADJUSTABLE W/O ARMS	1	
2	2421-1	SEAT PLATE	1	
3	0161C	WASHER, LOCK, 5/16 MEDIUM	4	
4	1237	SCREW, SHC, 5/16- 18 X 7/8 NYLOC	4	
5	2889-1	FRAME, SEAT	1	
6	11644	SCREW, HHC, WASHER 10- 32 X 5/8	1	
7	10237	WASHER, EXT. SHKP, #10	1	
8	8156	SCREW, HHC 3/8- 16 X 2-1/2	1	
9	4001	WASHER, FLAT 3/8 PLTD STD. USS	1	
10	11593	SPRING, THROTTLE RETURN	1	
11	10133	NUT, NYLOC 3/8- 16	1	
12	0183	PIN, COTTER 1/8 1-1/4	2	
13	8081	PIN, CLEVIS 1/2 X 2.75 EFF.	2	
14	10306	SCREW, HHC 1/2- 13 X 4-1/2	4	
15	20346	SPACER, .56 ID. X 1.00 OD X 1.5L	4	
16	10176	NUT, NYLOC 1/2- 13	4	
17	10019	NUT, NYLOC 10- 32	1	
18	12018	CONNECTOR, RELAY	1	
19	12017	RELAY, KILL	1	
20	12005	SWITCH, KILL COLE- HER #90036- 02	1	
21	12020	TERMINAL, WIRE PIONEER 12066614	4	

# HONDA GX-670 — AIR CLEANER ASSY.

AIR CLEANER ASSY.



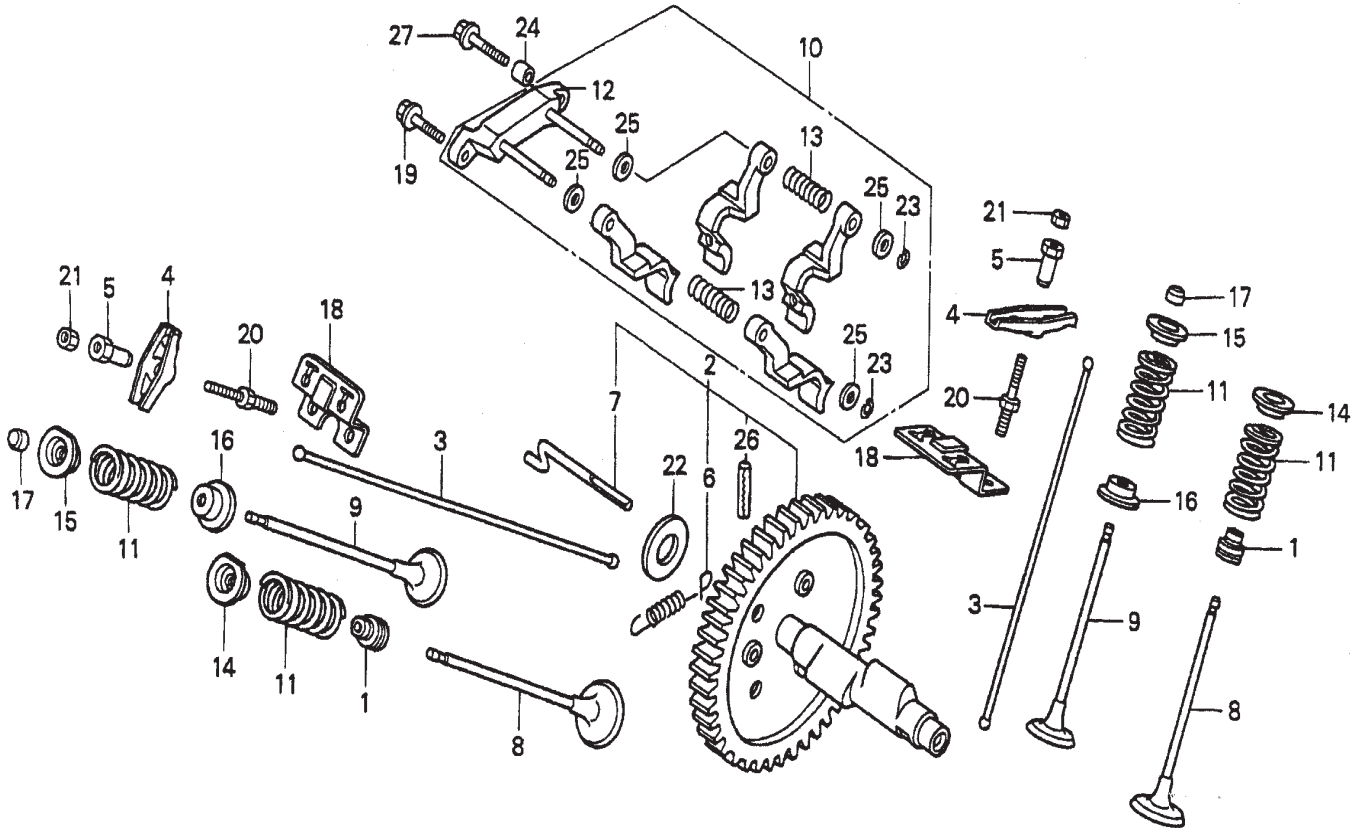
## HONDA GX-670 — AIR CLEANER ASSY.

### AIR CLEANER ASSY.

<u>NO.</u>	<u>PART NO.</u>	<u>PART NAME</u>	<u>QTY.</u>	<u>REMARKS</u>
1	17210ZJ1841	ELEMENT COMP., AIR CLEANER	1	
2	17218ZJ1840	FILTER, OUTER	1	
3	17219ZJ1840	CLIP, AIR CLEANER	4	
4	17220ZN1000	HOUSING COMP., AIR CLEANER	1	
5	17229ZN1000	SEAL, AIR CLEANER HOUSING	1	
6	17230ZJ1840	COVER ASSEMBLY, AIR CLEANER	1	
8	17233ZJ1840	SEAL, AIR CLEANER COVER	1	
9	17234ZJ1840	PLATE, AIR CLEANER SETTING	1	
10	17238ZJ4830	COLLAR A, AIR CLEANER	2	
11	90003ZJ1840	BOLT, SPECIAL 5MM	2	
12	957010602800	BOLT, FLANGE 6 X 28	2	

# HONDA GX-670 — CAMSHAFT ASSY.

CAMSHAFT ASSY.



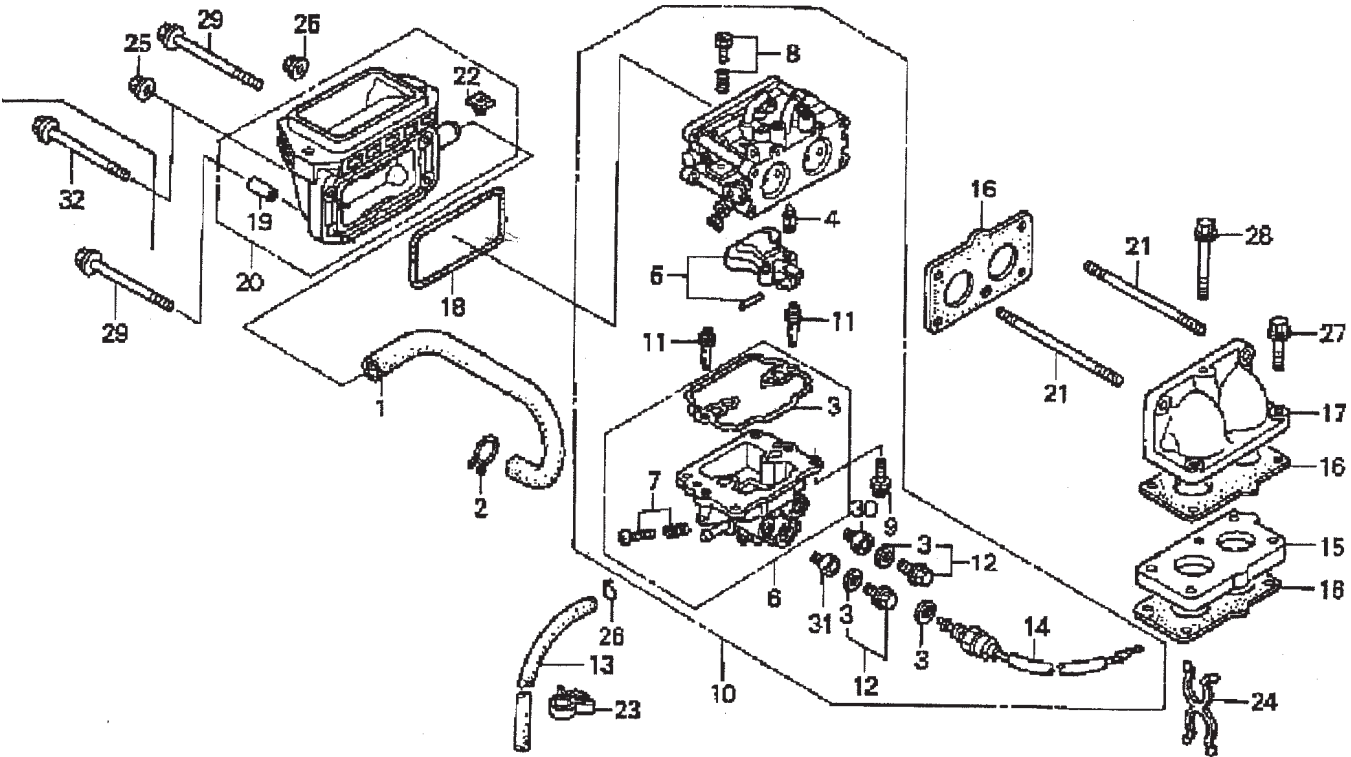
# HONDA GX-670 — CAMSHAFT ASSY.

## CAMSHAFT ASSY.

<u>NO.</u>	<u>PART NO.</u>	<u>PART NAME</u>	<u>QTY.</u>	<u>REMARKS</u>
1	12209ZE8003	SEAL, VALVE STEM	2	
2	14100ZJ1842	CAMSHAFT ASSEMBLY .....	1	INCLUDES ITEMS W/%
3	14410ZJ1840	ROD, PUSH	4	
4	14431ZE2010	ARM, VALVE ROCKER	4	
5	14451ZE1013	PIVOT, ROCKER ARM	4	
6%	14568ZJ1841	SPRING, WEIGHT RETURN	1	
7%	14576ZJ1840	PIN, DECOMPRESSION	1	
8	14711ZE3000	VALVE IN.	2	
9	14721ZE3000	VALVE, EX.	2	
10	14730ZJ1840	LIFTER ASSEMBLY, VALVE .....	1	INCLUDES ITEMS W/*
11	14751ZE2003	SPRING, VALVE	4	
12*	14760ZJ1840	SHAFT COMP., VALVE LIFTER	1	
13*	14764ZJ1840	SPRING, VALVE LIFTER	2	
14	14771ZE2000	RETAINER, IN. VALVE SPRING	2	
15	14773ZE2000	RETAINER, EX. VALVE SPRING	2	
16	14775ZE2010	SEAT, VALVE	2	
17	14781ZE2000	ROTATOR, VALVE	2	
18	14791ZE2010	PLATE, PUSH ROD GUIDE	2	
19	90005895000	BOLT, FLANGE 5 X 16	1	
20	90012ZE0010	BOLT, PIVOT 8MM	4	
21	90206ZE1000	NUT, PIVOT ADJ.	4	
22	90446357000	WASHER, THRUST 17.2MM	1	
23*	90602ZE1000	CLIP, GOVERNOR HOLDER	2	
24	9430108120	PIN A, DOWEL 8 X 12	1	
25*	9410106800	WASHER, PLAIN 6MM	4	
26%	9430560282	PIN, SPRING 6 X 28	1	
27	957010602500	BOLT, FLANGE 6 X 25	1	

# HONDA GX-670 — CARBURETOR ASSY.

CARBURETOR ASSY.



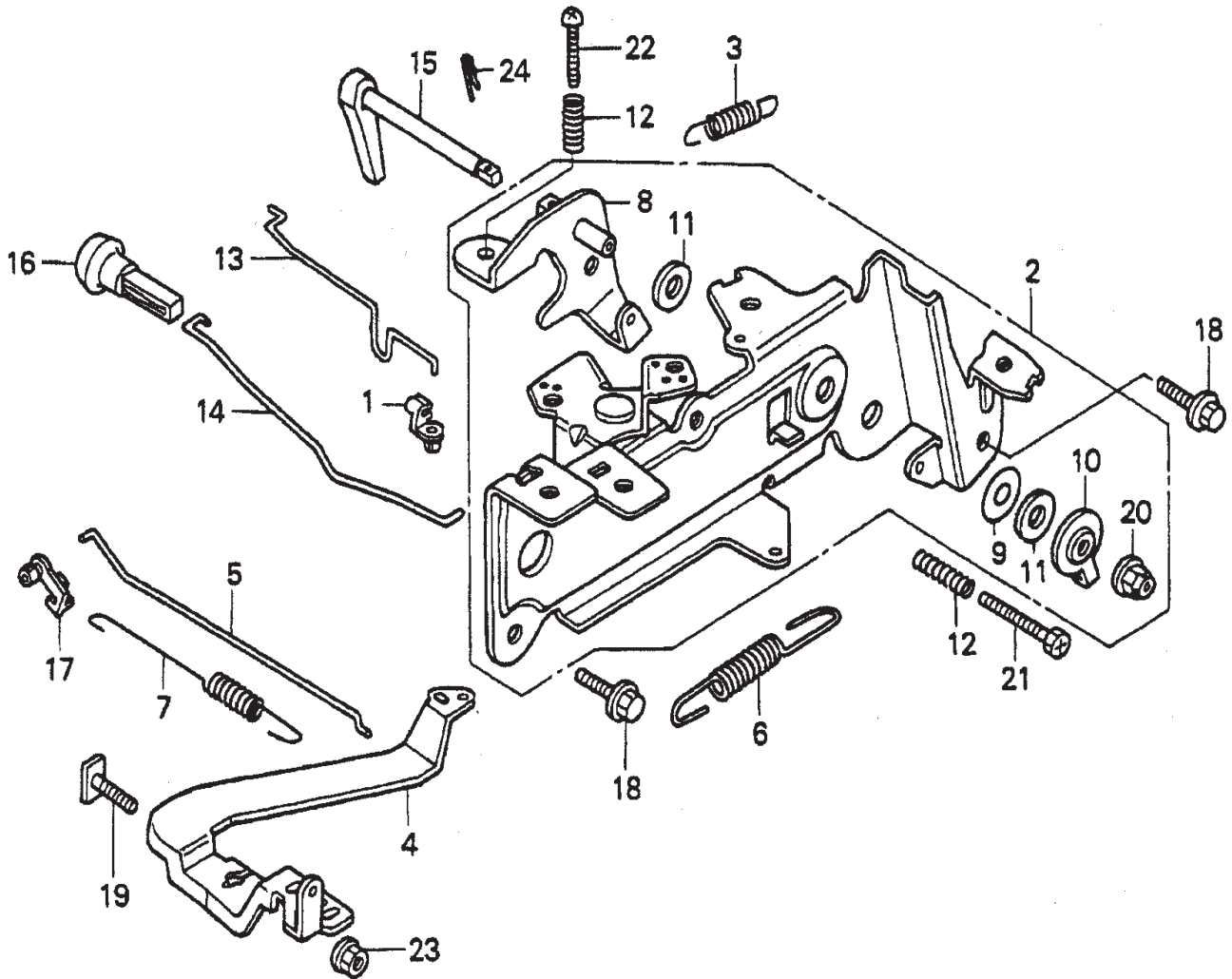
# HONDA GX-670 — CARBURETOR ASSY.

## CARBURETOR ASSY.

<u>NO.</u>	<u>PART NO.</u>	<u>PART NAME</u>	<u>QTY.</u>	<u>REMARKS</u>
1	12357ZJ1840	TUBE, BREATHER	1	
2	15772551000	CLIP, BREATHER TUBE	1	
3*+	16010ZN1003	GASKET SET	1	
4*	16011ZN1003	VALVE, FLOAT	1	
5*	16013ZN1003	FLOAT SET	1	
6*	16015ZN1003	CHAMBER SET, FLOAT .....	1	INCLUDES ITEMS W/+
7*+	16024ZN1003	SCREW SET, DRAIN	1	
8*	16028ZN1003	SCREW SET	1	
9*	16081ZN1003	SCREW-WASHER	4	
10	16100ZN1003	CARBURETOR ASSEMBLY (TB01A A) .....	1	INCLUDES ITEMS W/*
11*	16150ZN1003	JET, SLOW #54	2	
12*	16181ZN1003	PLUG SET	2	
13	16198ZJ1840	TUBE, DRAIN	1	
14*	16200ZN1003	VALVE ASSEMBLY, SOLENOID	1	
15	16211ZN1000	INSULATOR, CARBURETOR	1	
16	16221ZN1000	GASKET, CARBURETOR	3	
17	17103ZN1010	ELBOW, MANIFOLD	1	
18	17228ZN1000	GASKET, AIR CLEANER	1	
19%	17238ZJ4830	COLLAR A, AIR CLEANER	4	
20	17410ZN1000	ELBOW COMP., AIR CLEANER .....	1	INCLUDES ITEMS W/%
21	90048ZC3000	BOLT, STUD 6 X 85	2	
22%	90314ZJ1840	NUT, INSERT 6MM	2	
23	90682959661	CLIP B, CABLE	1	
24	91402ZJ1841	CLIP, PURSE LOCK	1	
25	9405006000	NUT, FLANGE 6MM	2	
26	9500202080	CLIP, TUBE (B8)	1	
27	957010603000	BOLT, FLANGE 6 X 30	2	
28	957010606500	BOLT, FLANGE 6 X 65	1	
29	958010609008	BOLT, FLANGE 6 X 90	2	
30*	99101ZN10920	JET, MAIN #92 (OPTIONAL)	1	
30	99101ZN10960	JET, MAIN #96 (OPTIONAL)	1	
31*	99101ZN11020	JET, MAIN #102	1	
31	99101ZN10940	JET, MAIN #94 (OPTIONAL)	1	
31	99101ZN10980	JET, MAIN #98 (OPTIONAL)	1	
31	99101ZN11000	JET, MAIN #100	1	
32	958010609008	BOLT, FLANGE 6 X 90	2	

# HONDA GX-670 — CONTROL ASSY.

## CONTROL (2) ASSY.





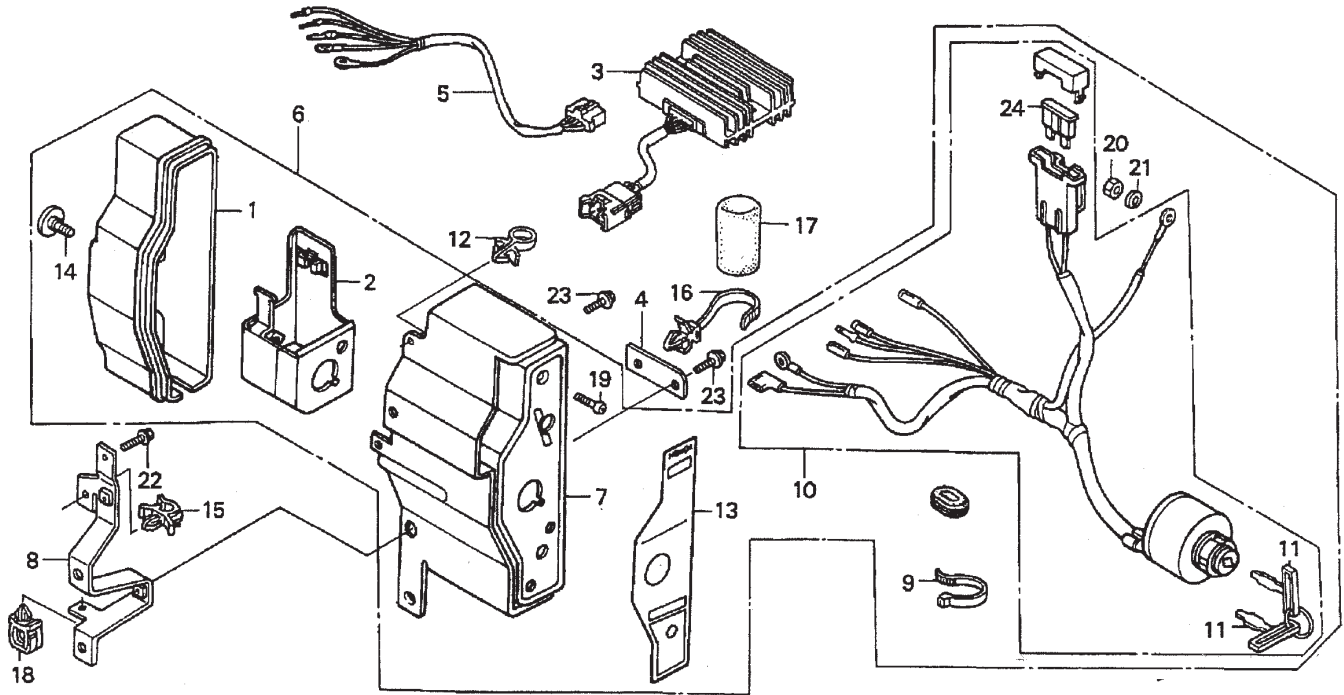
# HONDA GX-670 — CONTROL ASSY.

## CONTROL (2) ASSY.

<u>NO.</u>	<u>PART NO.</u>	<u>PART NAME</u>	<u>QTY.</u>	<u>REMARKS</u>
1	16263883W10	JOINT, ROD	1	
2	16500ZJ1850	CONTROL ASSEMBLY .....	1	INCLUDES ITEMS W/*
3	16534ZN1000	SPRING, STARTER	1	
4	16551ZJ1840	ARM, GOVERNOR	1	
5	16555ZN1000	ROD, GOVERNOR	1	
6	16561ZN1800	SPRING, GOVERNOR (MANUAL)	1	
7	16562ZN1000	SPRING, THROTTLE RETURN	1	
8*	16570ZJ1850	ARM COMP., CONTROL	1	
9*	16574883300	SPRING, LEVER	1	
10*	16575ZJ1850	WASHER, CONTROL ARM	1	
11*	16576883300	SPACER, CONTROL LEVER	2	
12	16584883300	SPRING, CONTROL ADJUSTING	2	
13	16611ZN1000	ROD, CHOKE CONTROL	1	
14	16628ZJ1850	ROD, CHOKE KNOB	1	
15	17850ZJ1850	LEVER ASSEMBLY, THROTTLE	1	
16	17951921030	KNOB, CHOKE	1	
17	17957ZV4000	BUSH, LINKAGE	1	
18	90014952000	BOLT, FLANGE 6 X 14	2	
19	90015ZE3790	BOLT, GOVERNOR ARM	1	
20*	90114SA0000	NUT, SELF- LOCK 6MM	1	
21	92301050250A	BOLT, SLOT 5 X 25	1	
22	93500050250A	SCREW, PAN 5 X 25	1	
23	9405006000	NUT, FLANGE 6MM	1	
24	9425110000	PIN, LOCK 10MM	1	

# HONDA GX-670 — CONTROL BOX ASSY.

## CONTROL BOX ASSY.



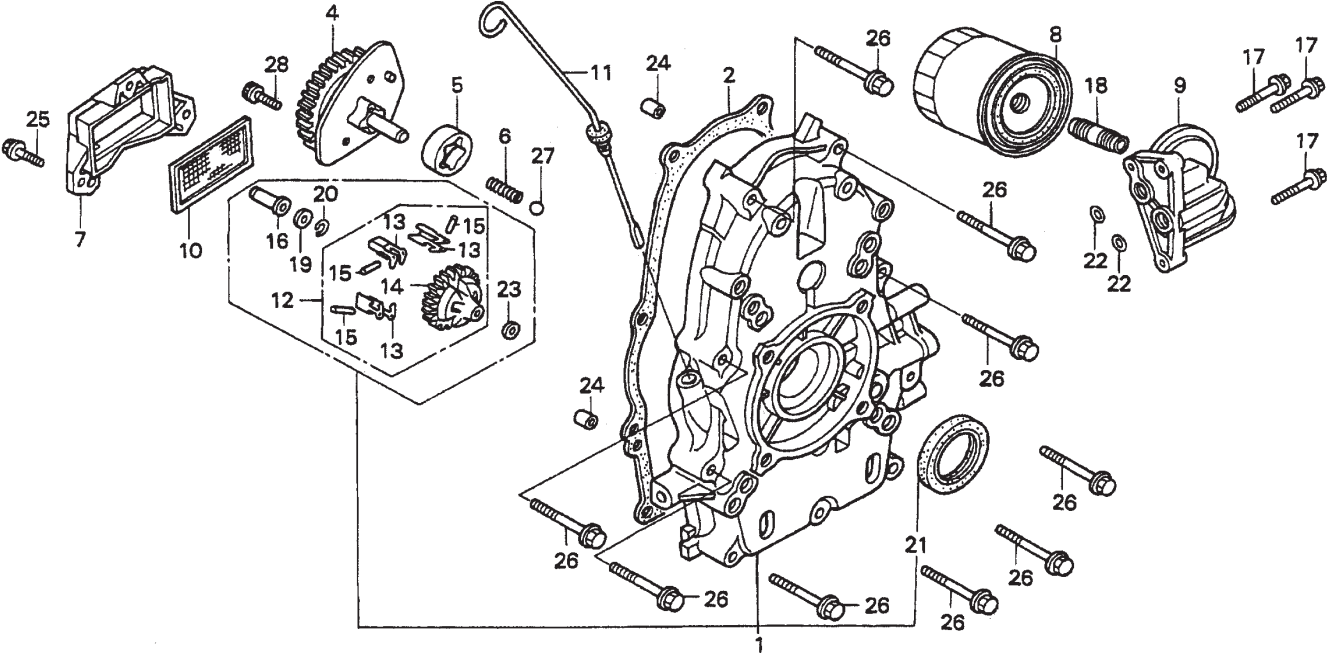
# HONDA GX-670 — CONTROL BOX ASSY.

## CONTROL BOX ASSY.

<u>NO.</u>	<u>PART NO.</u>	<u>PART NAME</u>	<u>QTY.</u>	<u>REMARKS</u>
1*	31612ZE2003	CASE, CONTROL	1	
2*	31614ZE2003	BRACKET, CASE MOUNTING	1	
3	31620ZG5003	RECTIFIER ASSEMBLY REGULATOR 20A	1	
4	32103759000	BRACKET, WIRE HARNESS CLIP	1	
5	32105ZJ1800	SUB- WIRE HARNESS ASSEMBLY	1	
6	32340ZJ1841	BOX ASSEMBLY CONTROL .....	1	INCLUDES ITEMS W/*
7*	32345ZJ1811	PANEL COMP., CONTROL	1	
8	32349ZJ1840	STAY, CONTROL BOX	1	
9*	32902892003	BAND	1	
10*	35100ZJ1841	SWITCH ASSEMBLY COMBINATION .....	1	INCLUDES ITEMS W/%
11*%	35111880003	KEY COMP.	2	
12	36103ZE1000	HOLDER, STOP SWITCH WIRE	1	
13*	87529ZE2860	MARK, CONTROL BOX, EXTERNAL- REG.	1	
14*	90380MA6010	SCREW, SPECIAL 6 X 12	1	
15	32171GJ1003	CLIP, WIRE HARNESS	1	
16	90676SA8003	BAND, WIRE HARNESS 150MM (BLUE)	1	
17	91408ZJ1810	TUBE, CORD 30MM	1	
18	91504750003	CLIP, WIRE HARNESS	1	
19	93500040120H	SCREW, PAN 4 X 12	1	
20*	94001040800S	NUT, HEX. 4MM	1	
21*	9411104800	WASHER, SPRING 4MM	1	
22	957010601000	BOLT, FLANGE 6 X 10	1	
23	957010601200	BOLT, FLANGE 6 X 12	2	
24*%	9820032500	FUSE, BLADE 25A	1	

# HONDA GX-670 — CRANKCASE COVER ASSY.

## CRANKCASE COVER ASSY.



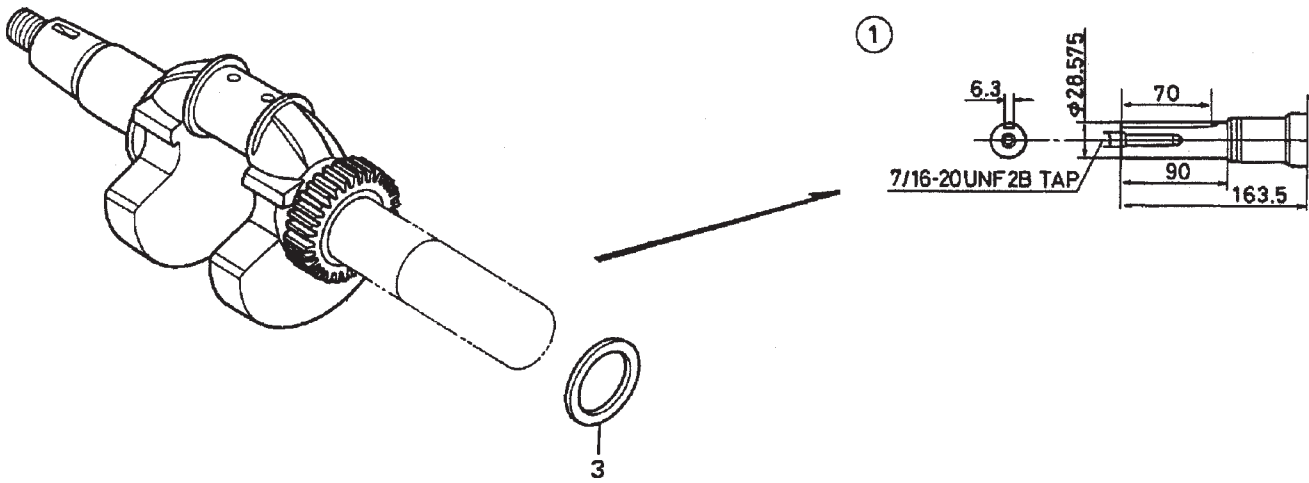
# HONDA GX-670 — CRANKCASE COVER ASSY.

## CRANKCASE COVER ASSY.

<u>NO.</u>	<u>PART NO.</u>	<u>PART NAME</u>	<u>QTY.</u>	<u>REMARKS</u>
1	11300ZJ1840	COVER ASSEMBLY, CRANKCASE (Q- TYPE) ....	1	INCLUDES ITEMS W/*
2	11381ZJ1840	GASKET, CASE COVER	1	
4	15124ZJ1000	COVER ASSEMBLY, OIL PUMP	1	
5	15124ZJ1003	ROTOR, OIL PUMP (OUTER)	1	
6	15232ZJ1000	SPRING RELIEF VALVE	1	
7	15348ZJ1840	COVER, OIL FILTER	1	
8	15410ZJ4999AH	FILTER, OIL	1	
9	15411ZN1000	BASE, OIL FILTER	1	
10	15427ZJ1000	SCREEN, OIL FILTER	1	
11	15655ZJ1860	DIPSTICK, OIL	1	
12*	16510ZJ1840	GOVERNOR ASSEMBLY .....	1	INCLUDES ITEMS W/%
13*%	16511ZJ1840	WEIGHT, GOVERNOR	3	
14*%	16512ZJ1840	HOLDER, GOVERNOR WEIGHT	1	
15*%	16513ZE2000	PIN, GOVERNOR WEIGHT	3	
16*	16531ZE2000	SLIDER, GOVERNOR	1	
17	90015883000	BOLT, FLANGE 6 X 28	3	
18	90018PN3000	HOLDER, OIL FILTER	1	
19*	90473147000	WASHER 6 X 16	1	
20*	90602ZE1000	CLIP, GOVERNOR HOLDER	1	
21*	91202ZJ1841	OIL SEAL 38 X 58 X 9	1	
22	91320MJ6003	O- RING 11.8 X 2.4	2	
23*	9410106800	WASHER, PLAIN 6MM	1	
24	9430108140	PIN A, DOWEL 8 X 14	2	
25	957010602000	BOLT, FLANGE 6 X 20	3	
26	957010805000	BOLT, FLANGE 8 X 50	9	
27	9621112000	BALL, STEEL #12 (3/8)	1	
28	966000601600	BOLT, SOCKET 6 X 16	2	

# HONDA GX-670 — CRANKSHAFT ASSY.

CRANKSHAFT ASSY.



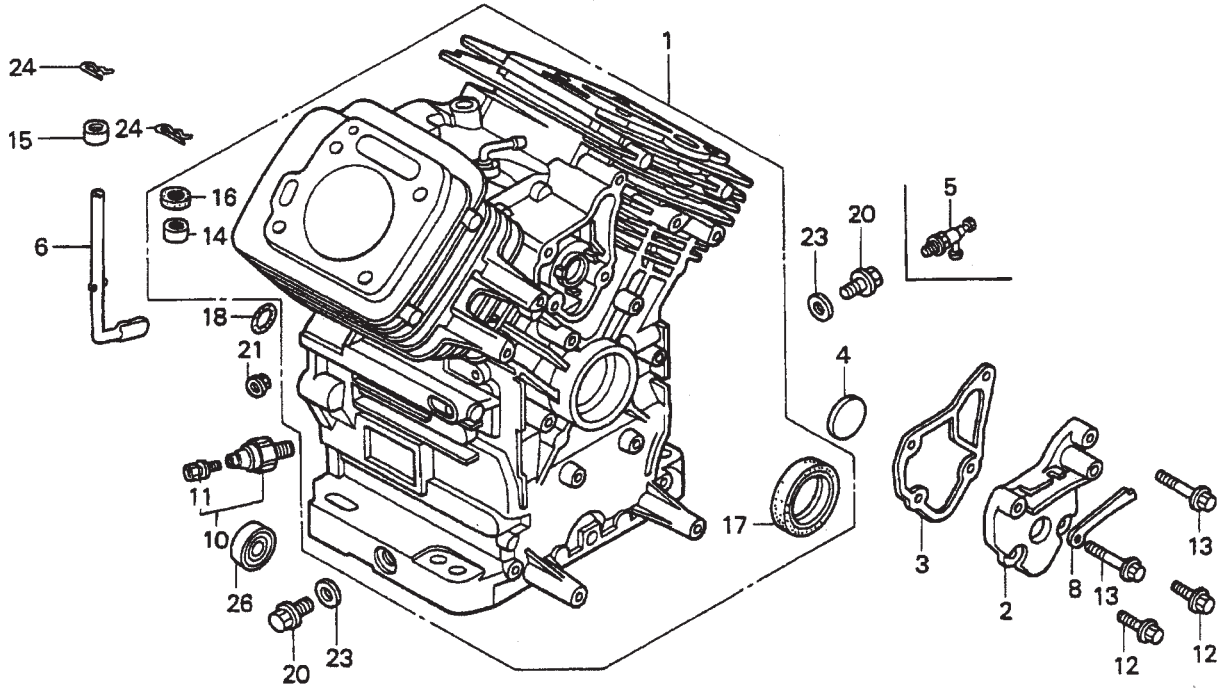
## HONDA GX-670 — CRANKSHAFT ASSY.

CRANKSHAFT ASSY.

<u>NO.</u>	<u>PART NO.</u>	<u>PART NAME</u>	<u>QTY.</u>	<u>REMARKS</u>
1	13310ZN1000	CRANKSHAFT COMP., T-TYPE	1	
3	90401ZJ1000	WASHER, CRANKSHAFT THRUST	1	

# HONDA GX-670 — CYLINDER BARREL ASSY.

CYLINDER BARRELA S S Y.





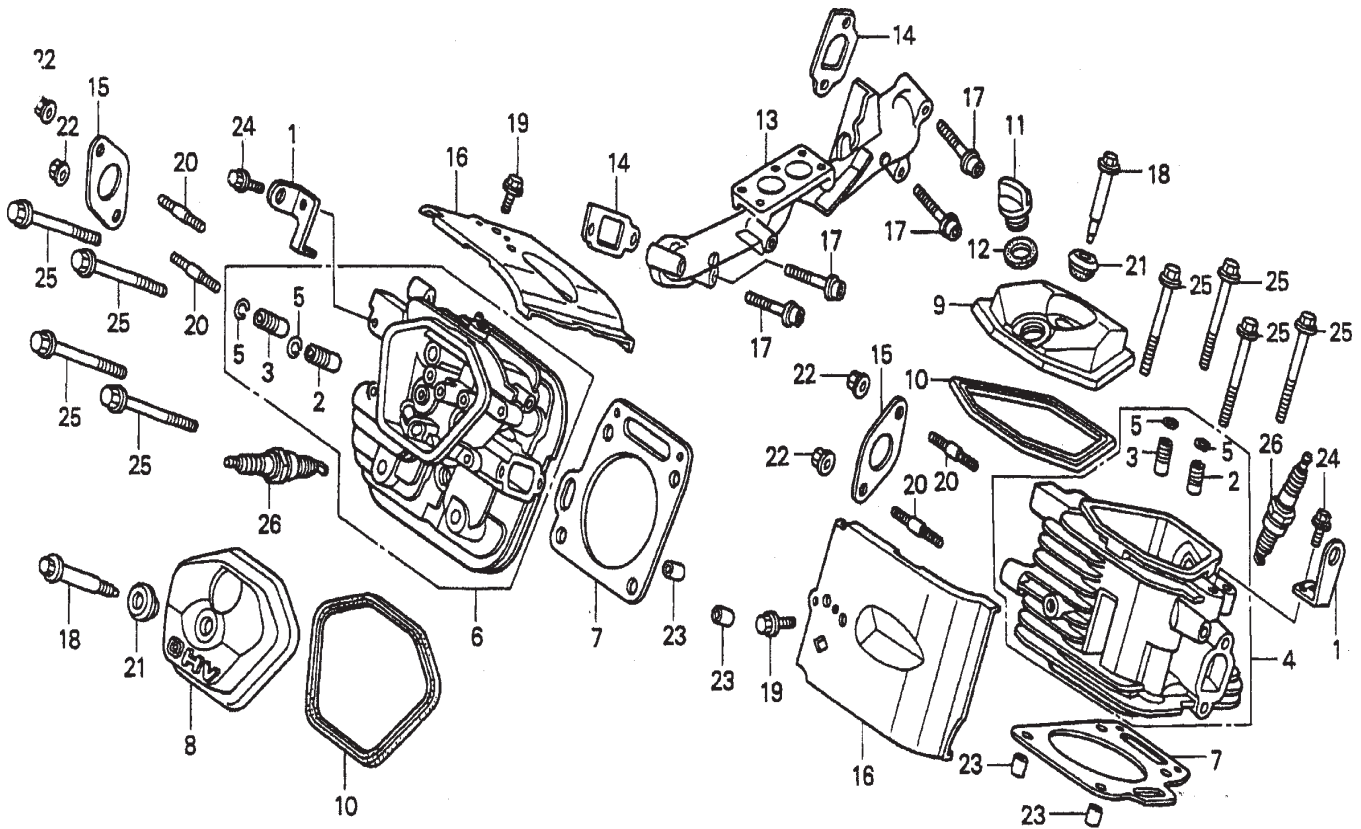
# HONDA GX-670 — CYLINDER BARREL ASSY.

## CYLINDER BARREL ASSY.

<u>NO.</u>	<u>PART NO.</u>	<u>PART NAME</u>	<u>QTY.</u>	<u>REMARKS</u>
1	12000ZN1010	CYLINDER ASSEMBLY .....	1	INCLUDES ITEMS W/*
2	12356ZJ1000	COVER, BREATHER	1	
3	12358ZJ1000	GASKET, BREATHER COVER	1	
4	12372ZE2300	VALVE, BREATHER	1	
5	15558ZJ010AH	VALVE, DRAIN 14 X 1.5 (OPTIONAL)	1	
6	16541ZJ1840	SHAFT, GOVERNOR ARM	1	
8	31511ZJ1000	CLAMP, WIRE	1	
10	37240ZG3E01	SWITCH, OIL PRESSURE	1	
11	90002ZG5004	SCREW- WASHER 4 X 8	1	
12	90029888000	BOLT, FLANGE 6 X 16	2	
13	90031ZE1000	BOLT, FLANGE 6 X 32	2	
14*	91001ZJ1841	BEARING, NEEDLE 8 X12.7 X 11.1	1	
15	91002ZJ1841	BEARING, NEEDLE 8 X12 X 10	1	
16*	91201ZE9003	OIL SEAL 8 X 14 X 5	1	
17*	91201ZJ1841	OIL SEAL 38 X 58 X 9	1	
18	91302MB6830	O- RING 13 X 3.0	1	
20	9280014000	BOLT, DRAIN PLUG 14MM	2	
21	9410208800	WASHER, PLAIN 8MM	3	
23	9410914000	WASHER, DRAIN PLUG 14MM	2	
24	9425108000	PIN, LOCK 8MM	2	
26	961406003010	BEARING, RADIAL BALL 6003	1	

# HONDA GX-670 — CYLINDER HEAD ASSY.

## CYLINDER HEAD ASSY.



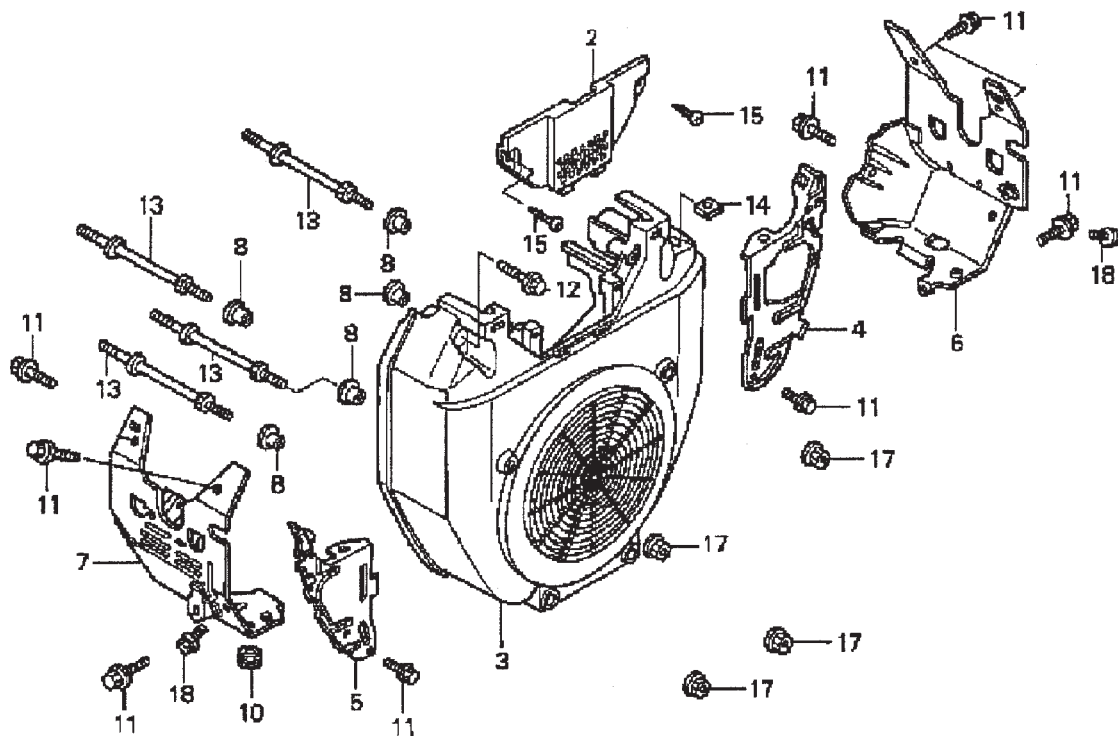
# HONDA GX-670 — CYLINDER HEAD ASSY.

## CYLINDER HEAD ASSY.

<u>NO.</u>	<u>PART NO.</u>	<u>PART NAME</u>	<u>QTY.</u>	<u>REMARKS</u>
1	11911ZJ1840	HANGER, ENGINE	2	
2*%	12204ZE2306	GUIDE, VALVE (OS), OPTIONAL	2	
3*%	12205ZJ1405	GUIDE, EX. VALVE (OS), OPTIONAL	2	
4	12210ZJ1840	CYLINDER HEAD COMP. #1 .....	1	INCLUDES ITEMS W/*
5*%	12216ZE2300	CLIP, VALVE GUIDE	4	
6	12220ZJ1840	CYLINDER HEAD COMP. #2 .....	1	INCLUDES ITEMS W/%
7	12251ZJ1841	GASKET, CYLINDER HEAD	2	
8	12311ZJ1840	COVER, HEAD	1	
9	12314ZJ1840	COVER, HEAD FILLER	1	
10	12391ZE2020	GASKET, CYLINDER HEAD COVER	2	
11	15611MB0000	CAP, OIL FILLER	1	
12	15625ZJ1840	GASKET, OIL FILLER CAP	1	
13	17101ZN1000	MANIFOLD, IN.	1	
14	17151ZJ1841	GASKET, IN. MANIFOLD	2	
15	18333ZE3800	GASKET, EX. PIPE	2	
16	19682ZJ1840	SHROUD, HEAD	2	
17	90011ZJ1841	BOLT, SOCKET 8 X 45	4	
18	90014ZE2000	BOLT, HEAD COVER	2	
19	90014952000	BOLT, FLANGE 6 X 14	2	
20	90018ZJ1840	BOLT, STUD 8 X 22	4	
21	90441ZE2010	WASHER COMP., HEAD COVER	2	
22	9405008000	NUT, FLANGE 8MM	4	
23	9430112200	PIN A, DOWEL 12 X 20	4	
24	957010802000	BOLT, FLANGE 8 X 20	2	
25	957011008000	BOLT, FLANGE 10 X 80	8	
26	9807952876	SPARK PLUG BPR2ES (OPTIONAL)	2	

# HONDA GX-670 — FAN COVER ASSY.

FAN COVER ASSY.



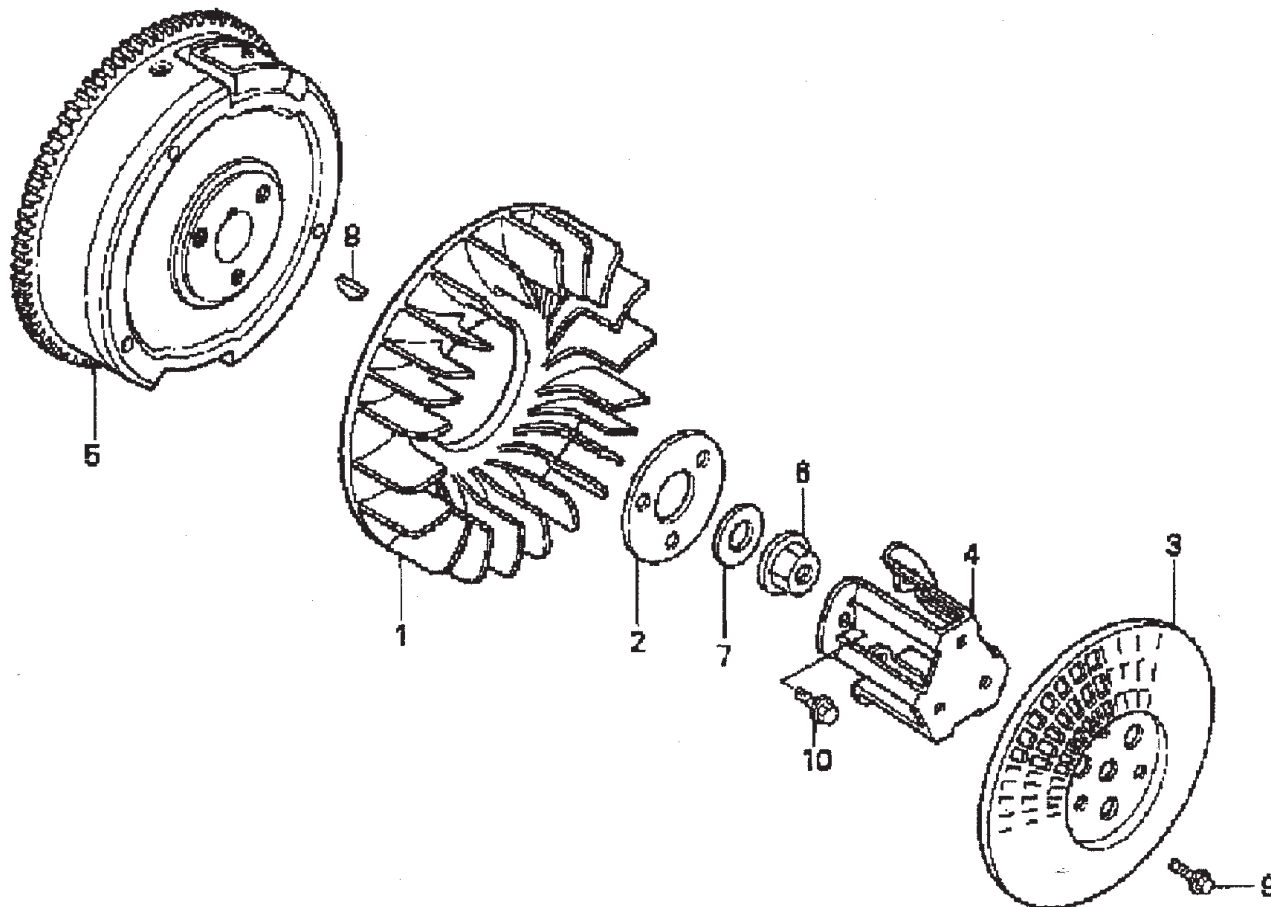
## HONDA GX-670 — FAN COVER ASSY.

FAN COVER ASSY.

<u>NO.</u>	<u>PART NO.</u>	<u>PART NAME</u>	<u>QTY.</u>	<u>REMARKS</u>
2	16715ZJ1850	COVER, FUEL PUMP, MANUAL CONTROL	1	
3	19611ZJ1840ZA	COVER, FAN *NH1* (BLACK)	1	
4	19612ZJ1840	PLATE, RIGHT SIDE	1	
5	19614ZJ1840	PLATE, LEFT SIDE	1	
6	19631ZJ1840	SHROUD, RIGHT	1	
7	19632ZN1000	SHROUD, LEFT	1	
8	33713GC2000	COLLAR B, TAIL LIGHT	6	
10	80101310000	RUBBER, RR. FENDER CUSHION	1	
11	90013883000	BOLT, FLANGE 6 X 12 (CT200)	9	
12	90018ZE1000	BOLT, FLANGE 6 X 23	2	
13	90042ZJ1840	BOLT, STUD 6 X 71	4	
14	90313ZJ1840	NUT, SQUARE 5MM	2	
15	9391325580	SCREW, TAPPING 5 X 20	2	
17	9405006000	NUT, FLANGE 6MM	4	
18	957010600800	BOLT, FLANGE 6 X 8	2	

# HONDA GX-670 — FLYWHEEL ASSY.

FLY WHEEL ASSY.



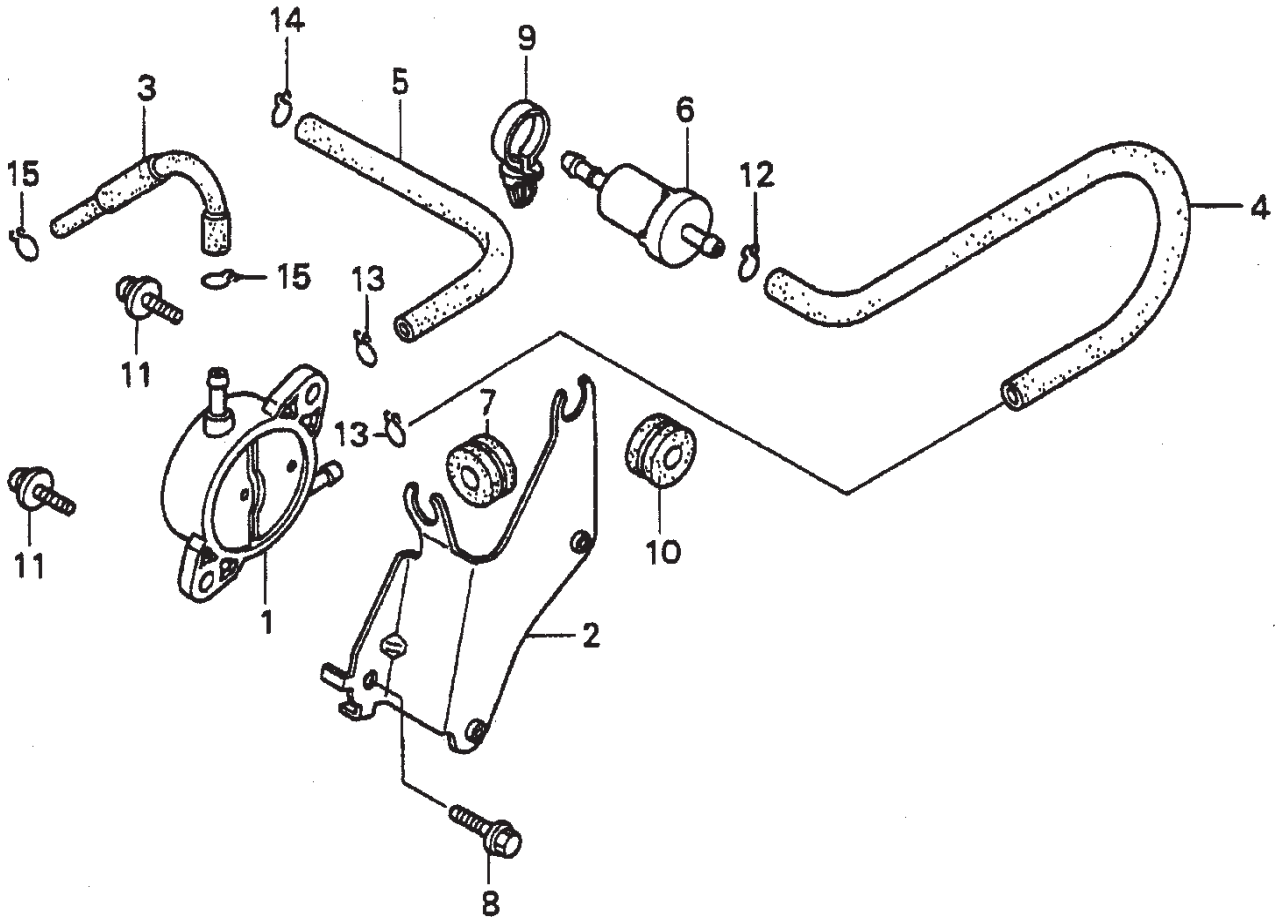
## HONDA GX-670 — FLYWHEEL ASSY.

### FLY WHEEL ASSY.

<u>NO.</u>	<u>PART NO.</u>	<u>PART NAME</u>	<u>QTY.</u>	<u>REMARKS</u>
1	19511ZJ1000	FAN, COOLING	1	
2	19513ZJ1000	PLATE, COOLING FAN SETTING	1	
3	28452ZJ1811	GRID, SCREEN P.T.O. (OPTIONAL)	1	
4	28454ZJ1801	HOLDER, SCREEN GRID, OPTIONAL	1	
5	31110ZJ1840	FLY WHEEL COMP.	1	
6	90201ZG3000	NUT, FLANGE 20MM	1	
7	90401ZG3000	WASHER 20MM	1	
8	90741ZE2000	KEY, SPECIAL WOODRUFF 25 X 18	1	
9	957010601200	BOLT, FLANGE 6 X 12 (OPTIONAL)	3	
10	957010801600	BOLT, FLANGE 8 X 16	3	

# HONDA GX-670 — FUEL PUMP ASSY.

FUEL PUMP ASSY.





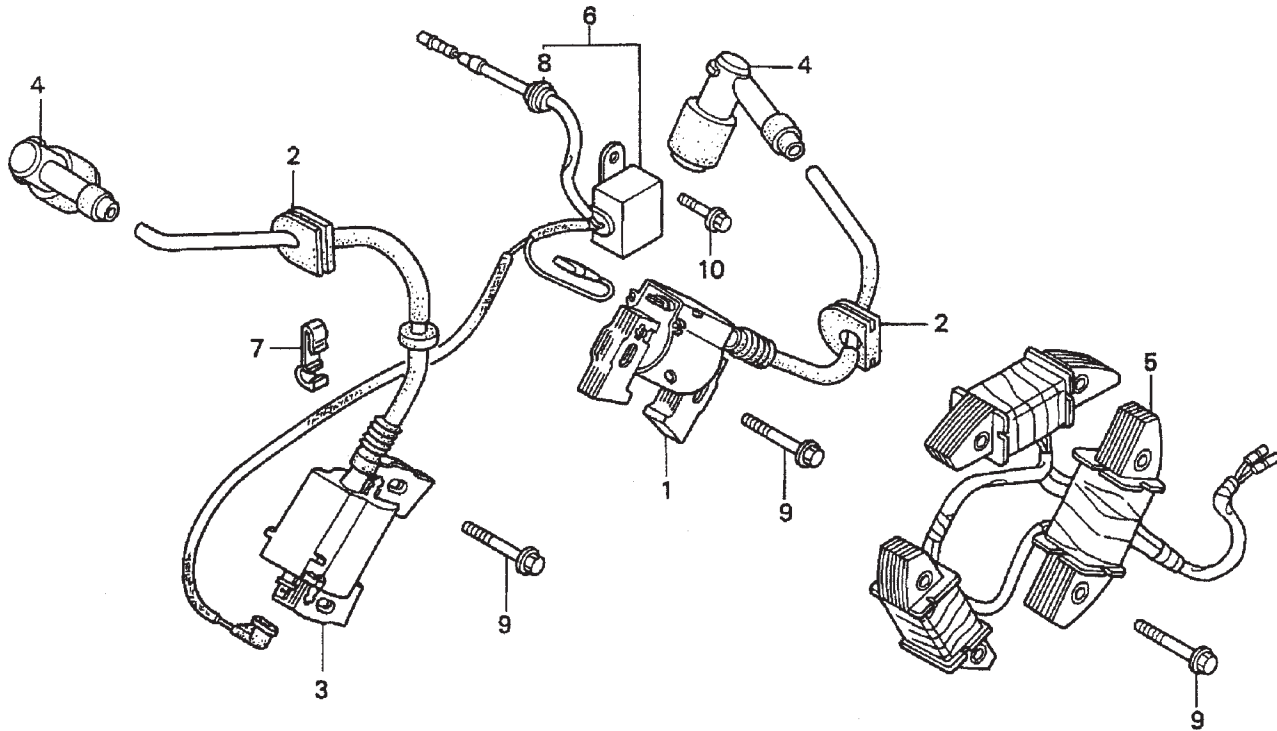
## HONDA GX-670 — FUEL PUMP ASSY.

### FUEL PUMP ASSY.

<u>NO.</u>	<u>PART NO.</u>	<u>PART NAME</u>	<u>QTY.</u>	<u>REMARKS</u>
1	16700ZL8003	PUMP ASSEMBLY, FUEL	1	
2	16711ZJ1840	STAY, FUEL PUMP	1	
3	16851ZN1000	TUBE, FUEL	1	
4	16852ZJ1840	TUBE B, FUEL	1	
5	16882ZJ1840	TUBE, DIAPHRAGM	1	
6	16910ZE8015	FILTER COMP., FUEL	1	
7	19111MF5000	GROMMET, RESERVE TANK	1	
8	90014952000	BOLT, FLANGE 6 X 14	1	
9	90517SA0003	CLIP, WIRE HARNESS	1	
10	91601ZJ1840	GROMMET, PUMP STAY	1	
11	938940601600	SCREW- WASHER 6 X 16	2	
12	9500202080	CLIP,TUBE B8	1	
13	9500202100	CLIP, TUBE B10	2	
14	9500250000	CLIP, TUBE C9	1	
15	9500270000	CLIP, TUBE C11	2	

# HONDA GX-670 — IGNITION COIL ASSY.

IGNITION COIL ASSY.



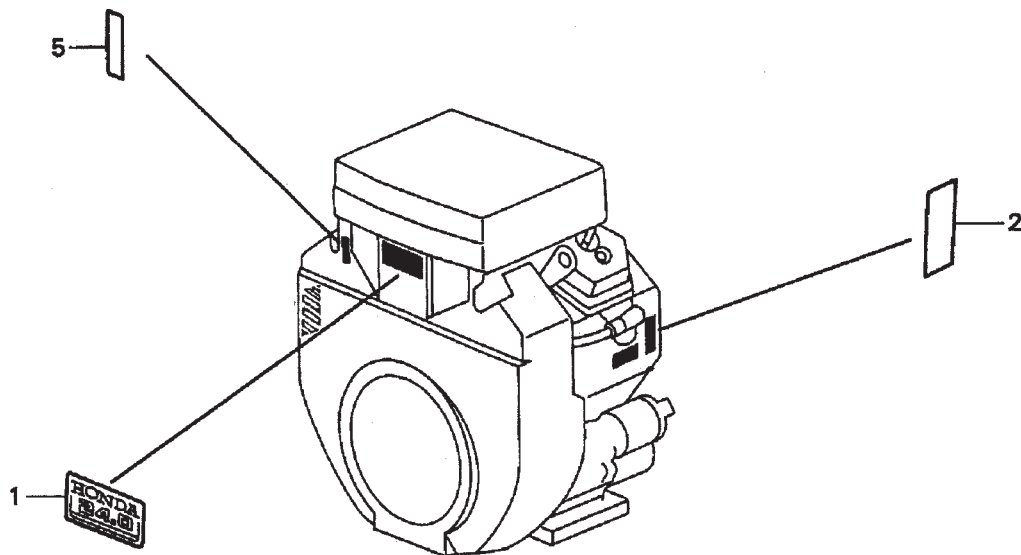
# HONDA GX-670 — IGNITION COIL ASSY.

## IGNITION COIL ASSY.

<u>NO.</u>	<u>PART NO.</u>	<u>PART NAME</u>	<u>QTY.</u>	<u>REMARKS</u>
1	30500ZJ1841	COIL ASSEMBLY R. IGNITION	1	
2	30518ZJ1000	GROMMET, IGNITION WIRE	2	
3	30550ZJ1841	COIL ASSEMBLY, L.. IGNITION	1	
4	30700ZJ1841	CAP ASSEMBLY, NOISE SUPPRESSOR	2	
5	31630ZJ1801	COIL ASSEMBLY, CHARGE 12V/20A	1	
6	31740ZJ1841	DIODE ASSEMBLY, ENGINE STOP .....	1	INCLUDES ITEMS W/*
7	32763PA0000	CLAMP, WIRE	1	
8*	63312ZA7000	GROMMET, TOOL	1	
9	90031ZE1000	BOLT, FLANGE 6 X 32	8	
10	957010600800	BOLT, FLANGE 6 X 8	1	

# HONDA GX-670 — LABELS ASSY.

LABELS ASSY.



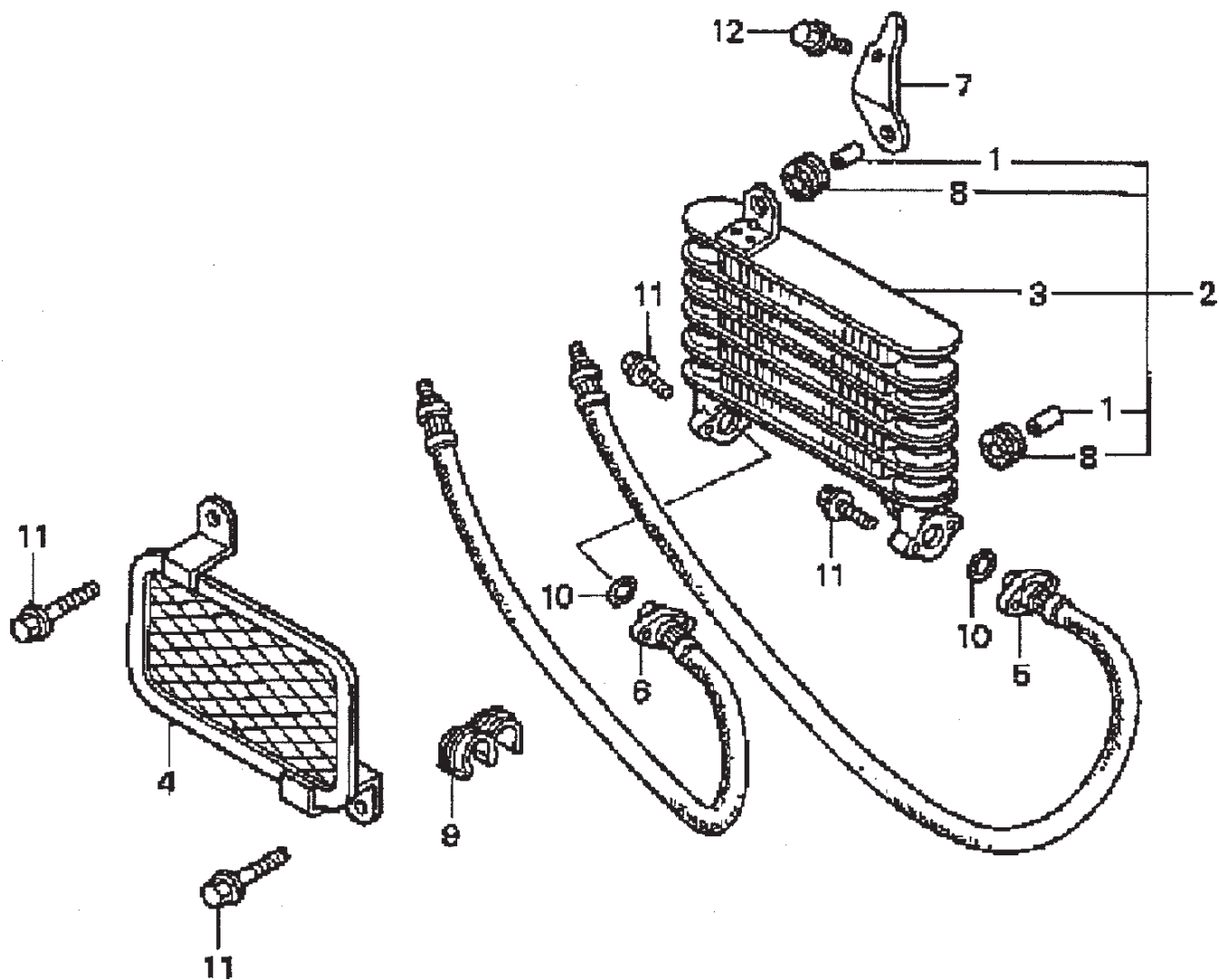
## HONDA GX-670 — LABELS ASSY.

LABELS ASSY.

<u>NO.</u>	<u>PART NO.</u>	<u>PART NAME</u>	<u>QTY.</u>	<u>REMARKS</u>
1	87101ZN1000	MARK, EMBLEM	1	
2	87152ZN1000	LABEL, SPECIFICATION G X 670	1	
5	87532ZJ1840	MARK, THROTTLE INDICATION	1	

# HONDA GX-670 — OIL COOLER ASSY.

OIL COOLER ASSY.



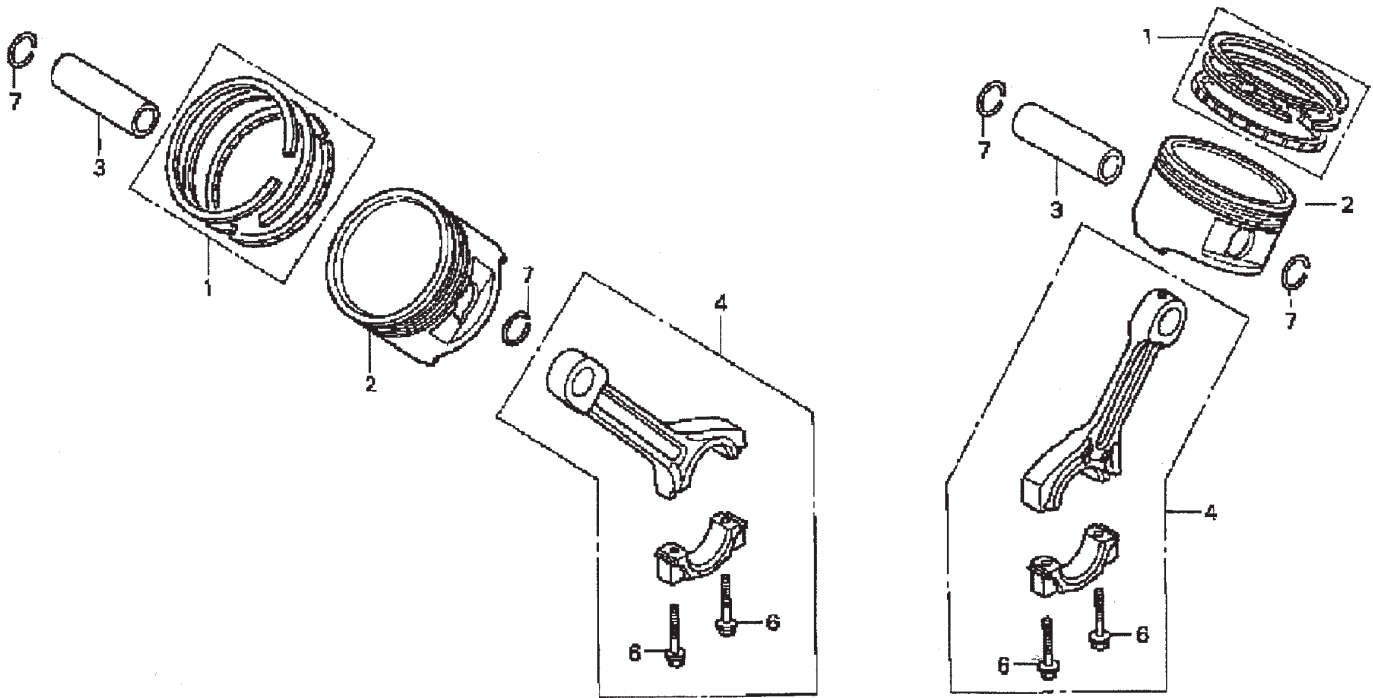
## HONDA GX-670 — OIL COOLER ASSY.

### OIL COOLER ASSY.

<u>NO.</u>	<u>PART NO.</u>	<u>PART NAME</u>	<u>QTY.</u>	<u>REMARKS</u>
1*	11513MN5300	COLLAR 12MM	2	
2	15605ZN1000	COOLER ASSEMBLY, OIL .....	1	INCLUDES ITEMS W/*
3*	15610ZN1000	COOLER COMP., OIL	1	
4	15613ZN1000	GRILLE, OIL COOLER	1	
5	15614ZN1003	HOSE A, OIL	1	
6	15616ZN1003	HOSE B, OIL	1	
7	15676ZN1000	STAY, OIL COOLER	1	
8*	19051KA3830	RUBBER, RADIATOR MOUNTING	2	
9	19314PH6000	CLAMP, HOSE D13.5	1	
10	91314ME5003	O- RING 10 X 2.6	2	
11	957010602200	BOLT, FLANGE 6 X 22	6	
12	90014952000	BOLT, FLANGE 6 X 14	1	

# HONDA GX-670 — PISTON + CONNECTING ROD ASSY.

PISTON + CONNECTING ROD ASSY.





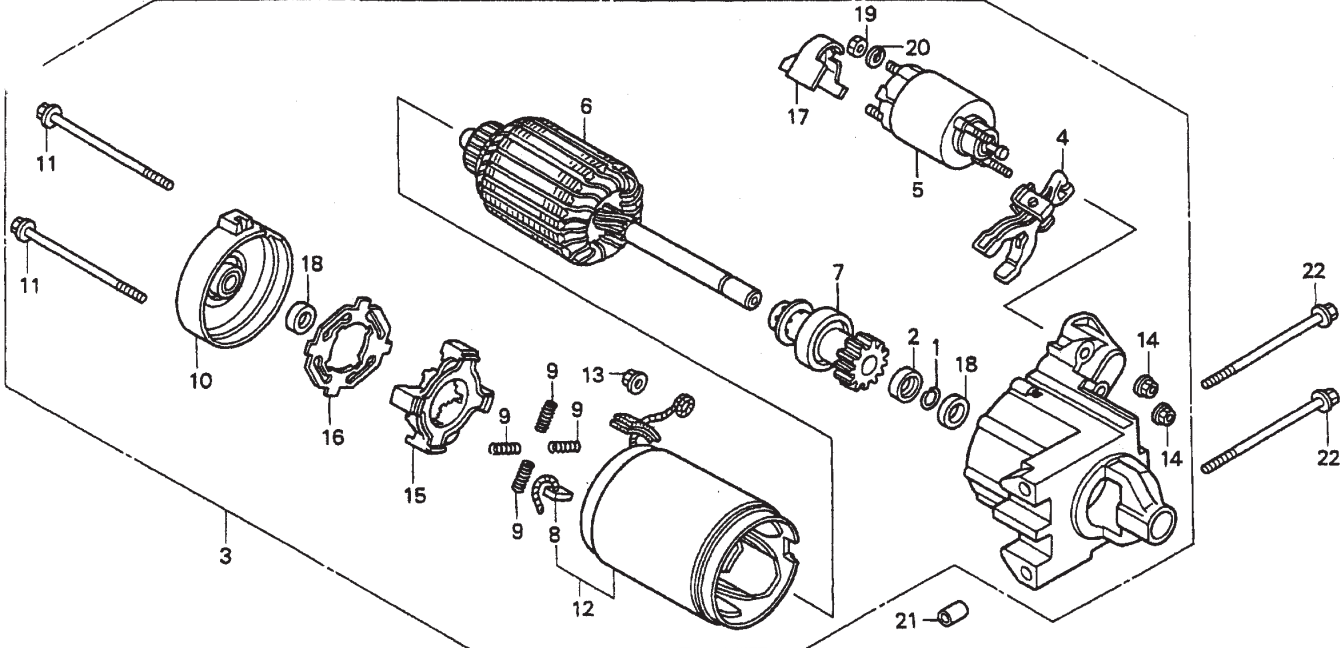
## HONDA GX-670 — PISTON + CONNECTING ROD ASSY.

### PISTON + CONNECTING ROD ASSY.

<u>NO.</u>	<u>PART NO.</u>	<u>PART NAME</u>	<u>QTY.</u>	<u>REMARKS</u>
1	13010ZJ1841	RING SET, PISTON STD.	2	
1	13011ZJ1841	RING SET, PISTON OS 0.25 (OPTIONAL)	2	
1	13012ZJ1841	RING SET, PISTON OS 0.50 (OPTIONAL)	2	
1	13013ZJ1841	RING SET, PISTON 0.75 (OPTIONAL)	2	
2	13101ZN1000	PISTON STD.	2	
2	13102ZN1000	PISTON OS 0.25 (OPOTIONAL)	2	
2	13103ZN1000	PISTON OS 0.50 (OPTIONAL)	2	
2	13104ZN1000	PISTON 0.75 (OPTIONAL)	2	
3	13111ZJ1840	PIN, PISTON	2	
4	13200ZN1003	ROD ASSEMBLY CONNECTING	2	
6	90001ZN1000	BOLT, CONNECTING ROD 6 X 37	4	
7	9460118000	CLIP, PISTON PIN 18MM	4	

# HONDA GX-670 — STARTER MOTOR ASSY.

STARTER MOTOR ASSY.



# HONDA GX-670 — STARTER MOTOR ASSY.

## STARTER MOTOR ASSY.

<u>NO.</u>	<u>PART NO.</u>	<u>PART NAME</u>	<u>QTY.</u>	<u>REMARKS</u>
1*	30201PH9004	RING, SNAP (DENSO)	1	
2*	30202PZ1003	COLLAR SET, CLUTCH STOP	1	
3	31200ZJ1841	MOTOR ASSEMBLY STARTER .....	1	INCLUDES ITEMS W/*
4*	31203PH9004	LEVER, PINION DRIVE	1	
5*	31204ZJ1H01	SWITCH ASSEMBLY, MAGNET	1	
6*	31206ZG4801	ARMATURE COMP.	1	
7*	31207ZJ1H01	CLUTCH COMP., OVERRUNNING	1	
8*	31211PH9004	BRUSH	4	
9*	31212PH9004	SPRING, BRUSH	4	
10*	31213P64N01	COVER	1	
11*	31214PH9004	BOLT, THROUGH	2	
12*	31216ZJ1H01	YOKE COMP.	1	
13*	31220PH9004	NUT, HEX 8MM	1	
14*	31223PA0006	NUT, FLANGE 5MM	2	
15*	31231PH9004	HOLDER, BRUSH	1	
16*	31233PH9004	INSULATOR, BRUSH HOLDER	1	
17*	31234ZJ1H01	COVER, TERMINAL	1	
18*	91002ZG4801	BEARING A	2	
19*	9400108000S	NUT, HEX 8MM	1	
20*	9411108000	WASHER, SPRING 8MM	1	
21	9430110120	PIN, DOWEL 10 X 12	2	
22	957010811000	BOLT, FLANGE 8 X 110	2	