

# **PARTS MANUAL**



## **MODEL SP2S20H SELF-PROPELLED PROFESSIONAL PAVEMENT SAW (HONDA GX630RTXF2 GASOLINE ENGINE)**

Revision #1 (10/01/2019)

**THIS MANUAL MUST ACCOMPANY THE EQUIPMENT AT ALL TIMES.**

**PN: 35524**

# TABLE OF CONTENTS

---

## SP2S20H Pavement Saw

Proposition 65 Warning .....	2
Silicosis/Respiratory Warnings .....	3
Table Of Contents .....	4
Explanation Of Code In Remarks Column.....	6
Suggested Spare Parts .....	7

## Component Drawings

Nameplate and Decals Assembly.....	8-9
Under Carriage Assembly .....	10-11
Blade Shaft Assembly .....	12-13
Lifting Bale Assembly.....	14-15
Console Assembly .....	16-17
Engine Mount Assembly.....	18-19
Engine Assembly .....	20-21
Pointers and Covers Assembly .....	22-23
Water System Assembly.....	24-25
Blade Guard Assembly.....	26-27
Manual Raise and Lower Assy. (20-in.) .....	28-29
Battery Assembly.....	30-31
Transmission Engage Lever Assembly .....	32-33
Hydrostatic Transmission Assembly .....	34-35
Hydrostatic Drive Assembly.....	36-37

### NOTICE

Specifications are subject to change without notice.

## SUGGESTED SPARE PARTS

### SP2S20H SAW WITH HONDA GX630RTXF2 GASOLINE ENGINE

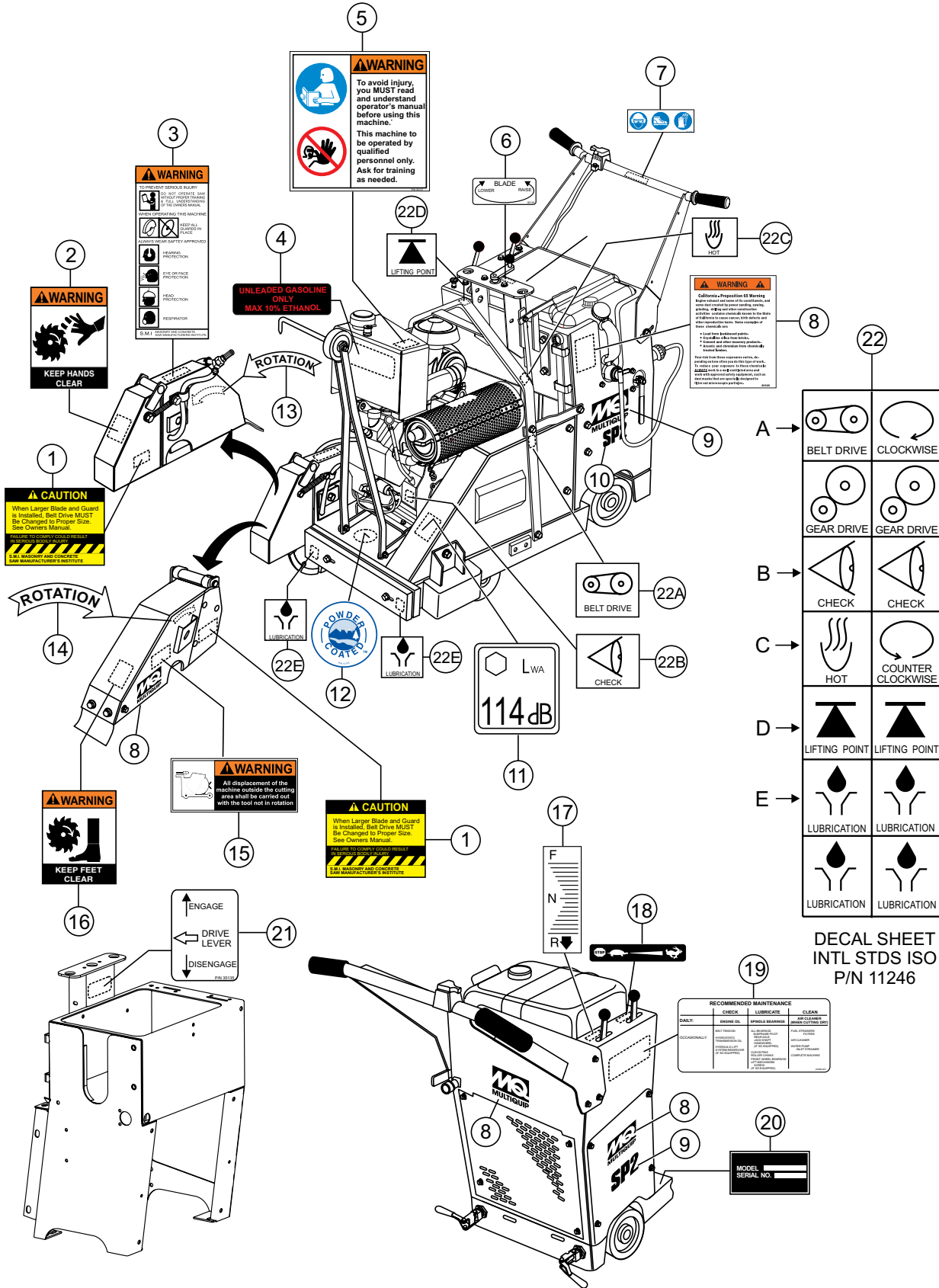
1 to 3 units

Qty.	P/N	Description
3	15897	V-BELTS, DRIVE
1	07055-050	V-BELTS, TRANSMISSION
1	29013-001	WRENCH, BOX END 1-1/2 IN.
1	60087	ROPE, FRONT POINTER 1/4 IN.
2	15081	GRIPS, HANDLE BAR 1 IN.
1	06922-003	BLADE SHAFT NUT, RIGHT
1	07038-016	BLADE SHAFT NUT, LEFT
1	26928-004	OUTER BLADE FLANGE
3	17210Z6LP821575	ELEMENT, AIR CLEANER
3	15400PLMA01PE	OIL FILTER
3	9807955876	SPARK PLUG
1	15229	CAP, W/GAUGE
1	35480Z6L003	SWITCH, ASSY., OIL LEVEL
1	16910Z6L003	STRAINER, FUEL
1	9820043000	FUSE, MINI, 30A
1	35110ZV5V50	KEY, IGNITION

#### NOTICE

Part number on this Suggested Spare Parts list may supersede/replace the P/N shown in the text pages of this book..

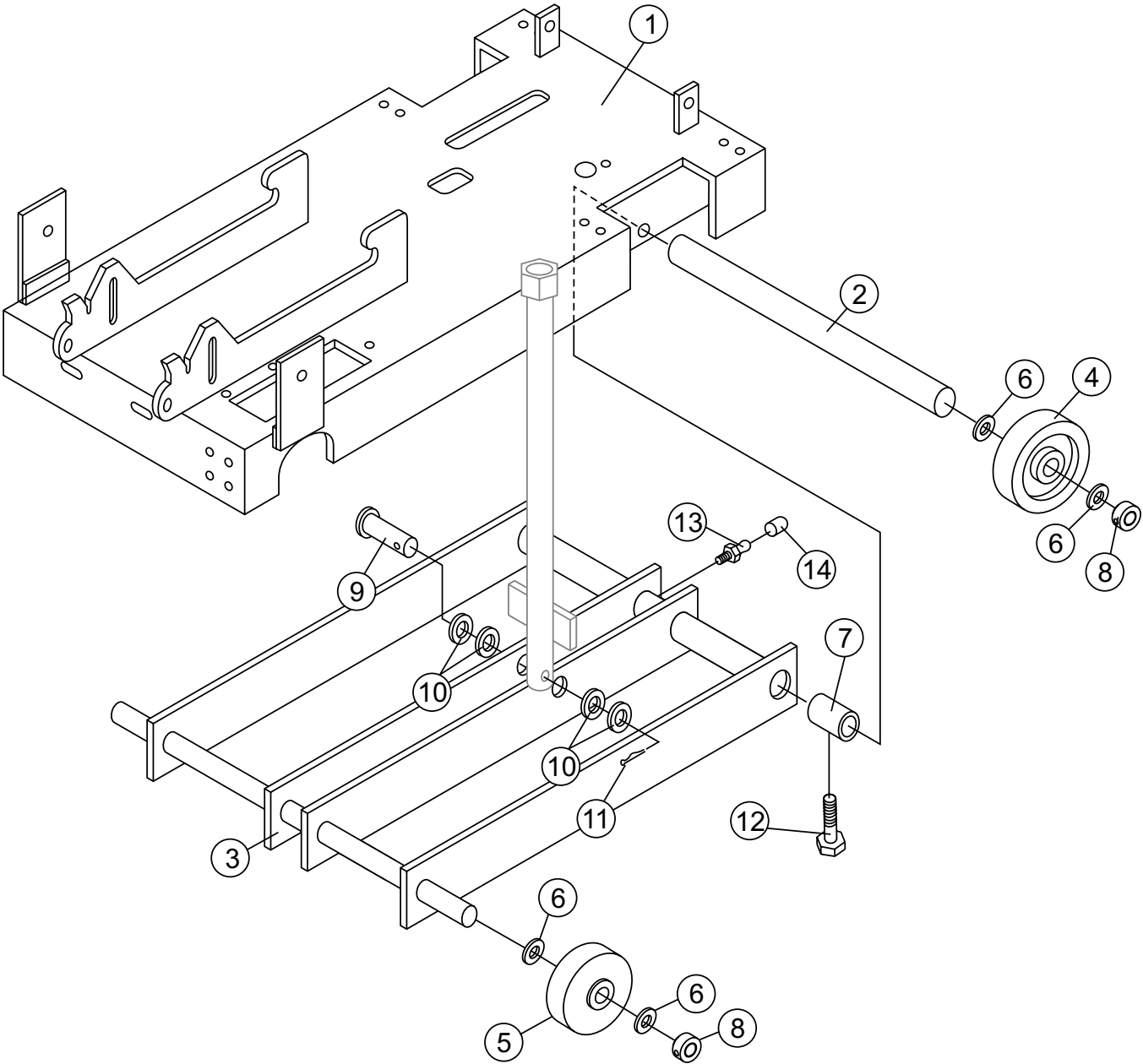
# NAMEPLATE AND DECALS



## NAMEPLATE AND DECALS

<u>NO.</u>	<u>PART NO.</u>	<u>PART NAME</u>	<u>QTY.</u>	<u>REMARKS</u>
1	23330-001	DECAL, CAUTION, BELT GUARD	2	
2	25249-001	DECAL, WARNING, KEEP HANDS CLEAR	1	
3	22122-001	DECAL, WARNING, SERIOUS INJURY	1	
4	23587	DECAL, UNLEADED GASOLINE ONLY	1	
5	35137	DECAL, WARNING, READ MANUAL	1	
6	35136	DECAL, BLADE RAISE/ LOWER	1	
7	36099	DECAL, PROTECTIVE CLOTHING	1	
8	20525	DECAL, PROP. 65, 3.25" X 4.25"	1	
9	38213	DECAL, MQ MULTIQUIP	5	
10	38224	DECAL, SP2, BLACK 5" X 3"	2	
11	35308	DECAL, GUARANTEED SOUND PWR. 114 DB.	1	
12	13118	DECAL, POWDER COATED	1	
13	25678	DECAL, CCW BLADE ROTATION	1	
14	25491	DECAL, CW BLADE ROTATION	1	
15	25867	DECAL, ROTATION DISPLACEMENT	1	
16	25260-001	DECAL, WARNING, KEEP FEET CLEAR	1	
17	28853-001	DECAL, FORWARD/REVERSE LEVER	1	
18	29736	DECAL, THROTTLE	1	
19	23596-001	DECAL, RECOMMENDED MAINTENANCE	1	
20		NAMEPLATE.....	1	.....CONTACT MQ PARTS DEPT.
21	35135	DRIVE LEVER	1	
22A	11246	DECAL, BELT DRIVE	1	
22B	11246	DECAL, CHECK OIL LEVEL	1	
22C	11246	DECAL, HOT	1	
22D	11246	DECAL, LIFTING POINT	1	
22E	11246	DECAL, LUBRICATION	2	

**UNDER CARRIAGE ASSY.**

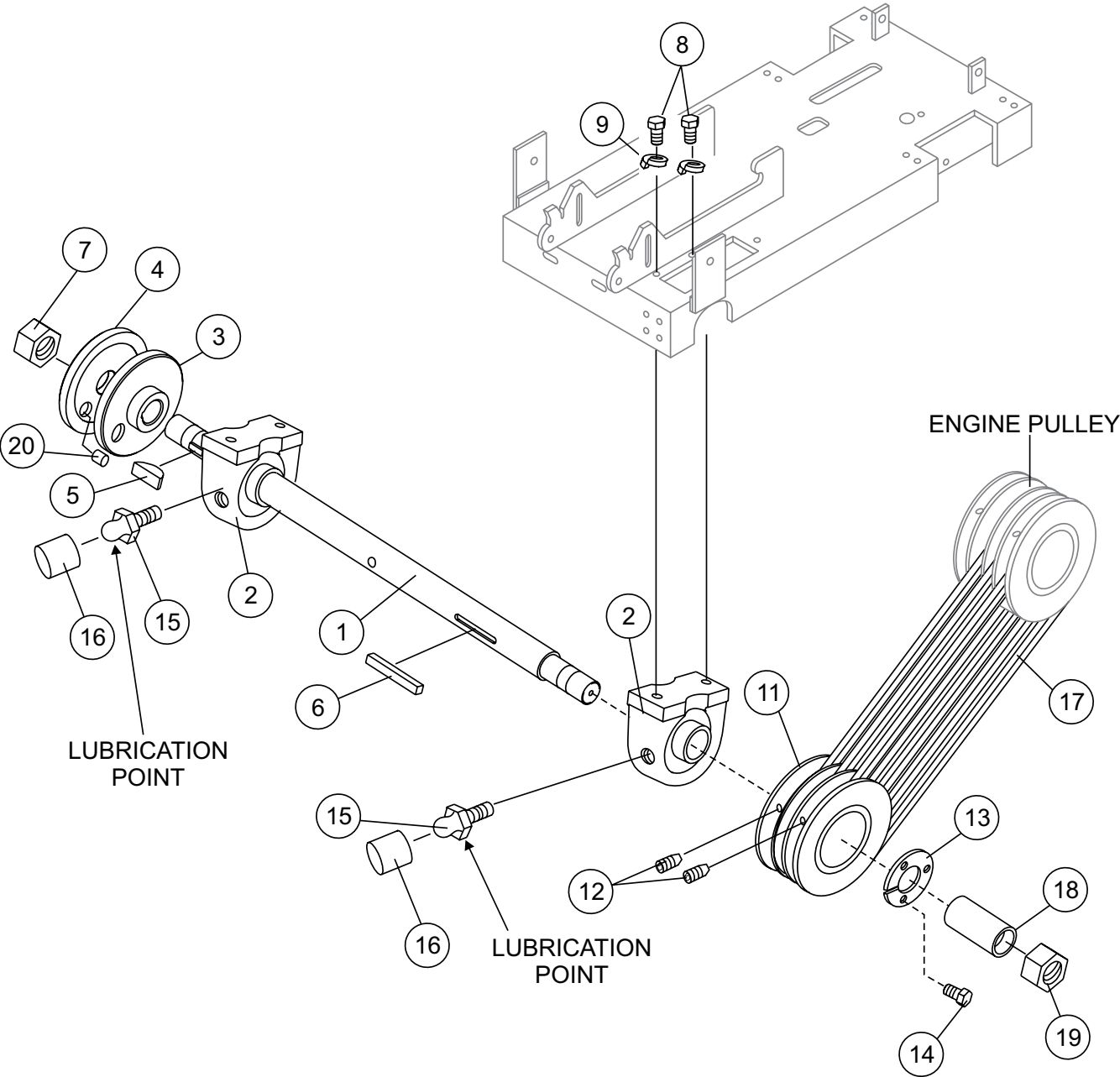


## UNDER CARRIAGE ASSY.

---

<u>NO.</u>	<u>PART NO.</u>	<u>PART NAME</u>	<u>QTY.</u>	<u>REMARKS</u>
1	28777-352	FRAME ASSY. 16"/18"/20"	1	
2	28781-002	AXLE, REAR	1	
3	28782-351	FRAME, UNDERCARRIAGE ASSY.	1	
4	28086-001	WHEEL, 8 X 2 .75 ROLLER BEARING REAR	2	
5	28085-001	WHEEL, 5 X 2 .75 ROLLER BEARING FRONT	2	
6	8151	WASHER, FLAT SAE 3/4	8	
7	10065-090	BEARING PLAIN	2	
8	25181-001	COLLAR, SET 0.75 X 1.50 X .50, SPLIT	4	
9	8081	PIN, CLEVIS 1/2 X 2-3/4	1	
10	0447	WASHER, FLAT SAE 1/2	4	
11	2219	PIN, COTTER 1/8D X 1	1	
12	25490	SCREW, SHS 5/16-18 X 3/8	2	
13	2621	ZERK, GREASE STR. 1/4-28	1	
14	1162 A	CAP, ZERK FITTING	1	

**BLADE SHAFT ASSY.**

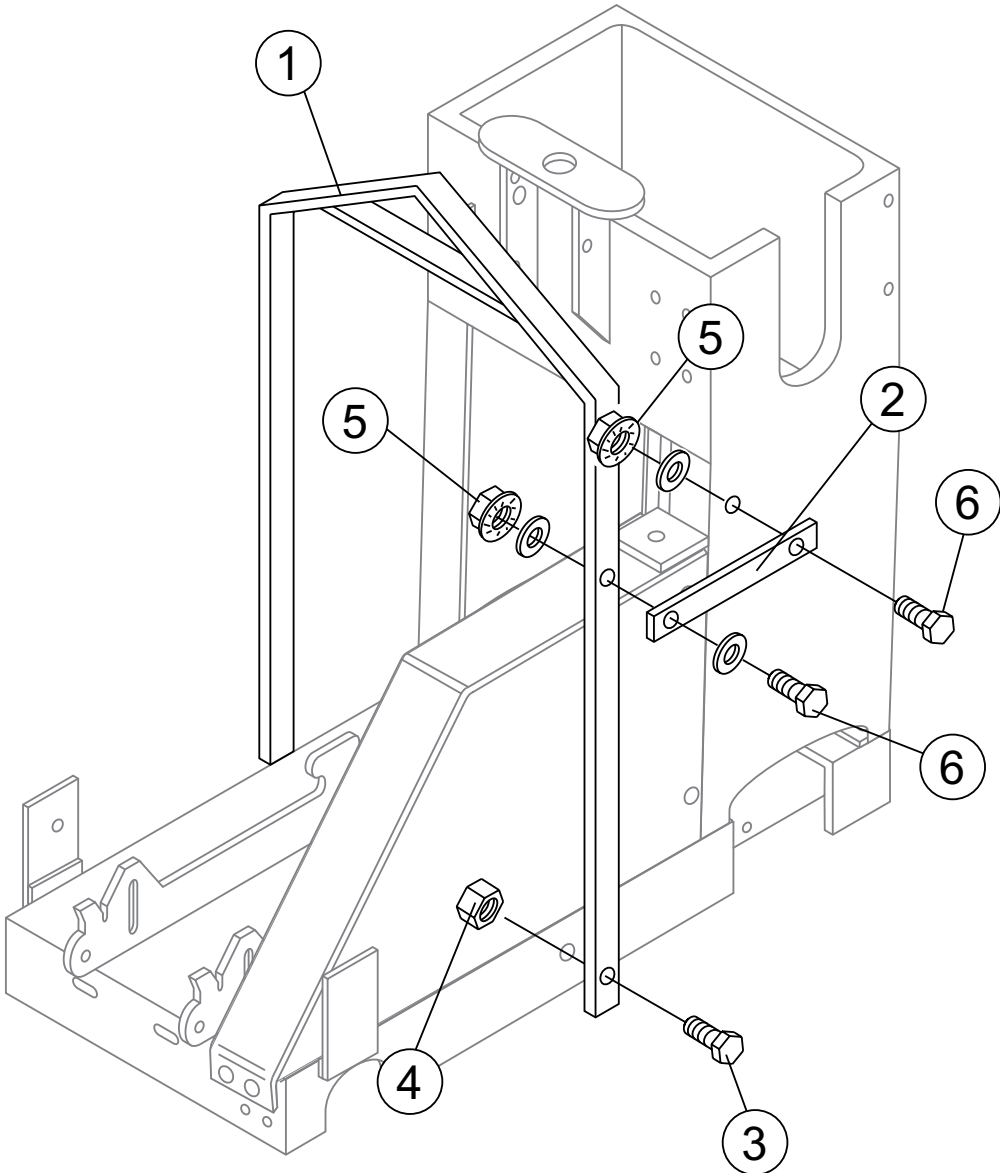




**BLADE SHAFT ASSY.**

<u>NO.</u>	<u>PART NO.</u>	<u>PART NAME</u>	<u>QTY.</u>	<u>REMARKS</u>
1	28807-002	SPINDLE, BLADE	1	
2	28081-001	BEARING, PILLOW BLK 1.25ID AS206-20	2	
3	28811-002	FLANGE, BLADE INSIDE 4.0OD X 1.0ID	1	
4	26928-004	FLANGE, BLADE OUTSIDE 1.0ID X4.0OD X 56	1	
5	0125	KEY, WOODRUFF #15	1	
6	6059 B	KEY, 1/4"SQ. X 2", 1018 STOCK	1	
7	06922-003	NUT, HEX JAM LH 1-14 PLATED	1	
8	06502-012	SCREW, HHC 7/16-14 X 1-1/2	4	
9	2955	WASHER, LOCK 7/16 ZINC	4	
10	0448	WASHER, FLAT SAE 7/16	4	
11	35447	PULLEY, BLADE SHAFT, 4F3V412X1.25 .....	1.....	4 GROOVE
12	1528	SCREW, SHS	2	
13	28841-001	BUSHING, SPLIT TYPE	1	
14	0424	SCREW, 1/4-20 X 1-1/4	3	
15	2621	ZERK FITTING	2	
16	1162 A	CAP,GREASE ZERK, #2 RED	2	
17	15897	V-BELT, 3V X 355	4	
18	23250-002	SPACER, SPINDLE	1	
19	07038-016	NUT, HEX JAM 1"-14 PLATED	1	
20	24894-024	PIN, DOWEL 3/8 X 1-1/4 LG	1	

**LIFTING BALE ASSY.**

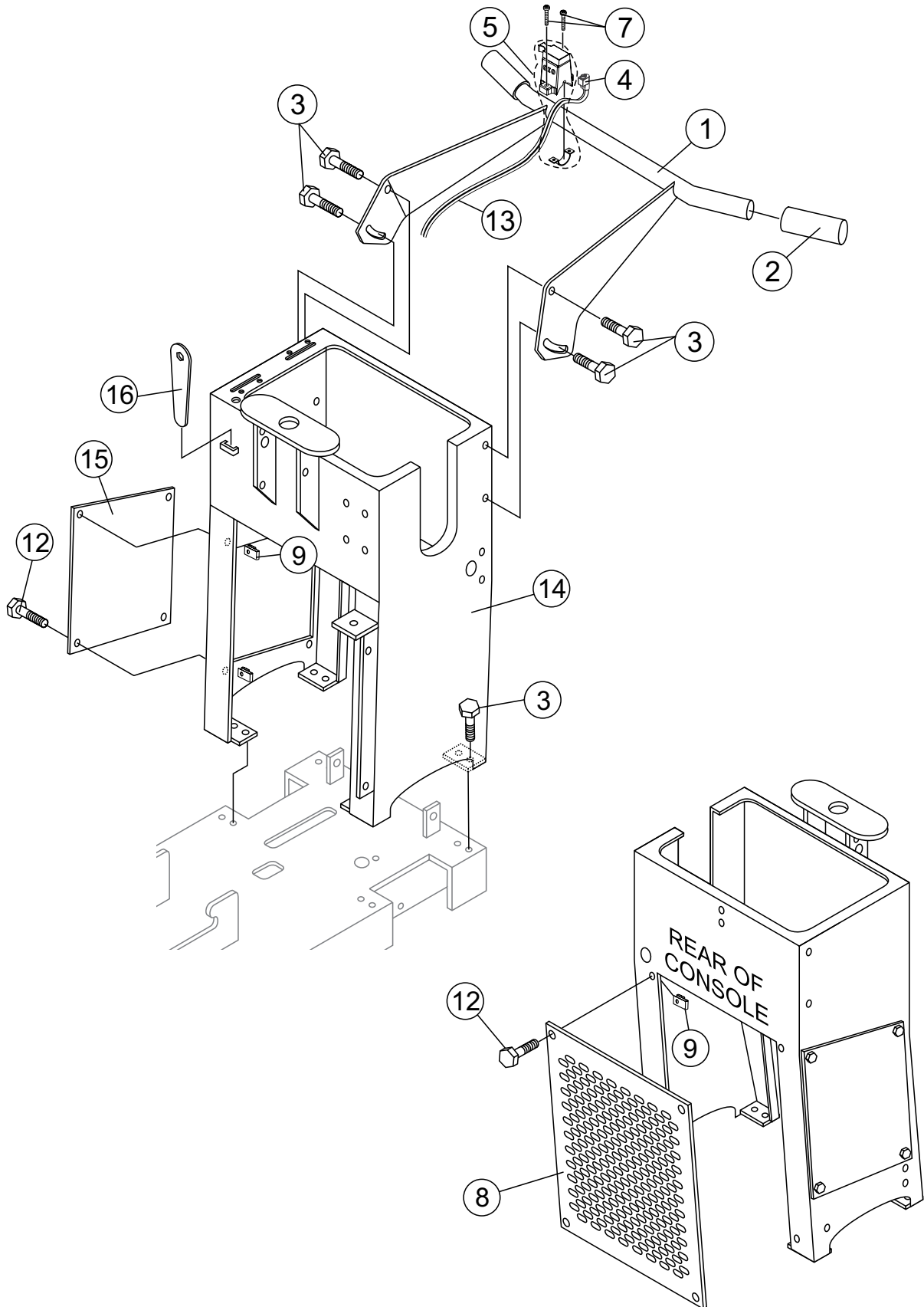


## LIFTING BALE ASSY.

---

<u>NO.</u>	<u>PART NO.</u>	<u>PART NAME</u>	<u>QTY.</u>	<u>REMARKS</u>
1	28890-351	LIFT BALE	1	
2	28893-002	BRACE, LIFT BAIL	1	
3	22106	SCREW, HHFS 3/8-16 X 1-1/4	2	
4	10133	NUT, NYLOC 3/8-16	2	
5	49071	NUT, FLANGED SERRATED PLTD 5/16-18	2	
6	9091	SCREW, HHFS 5/16-18 X 1 GR5	2	

# CONSOLE ASSY.

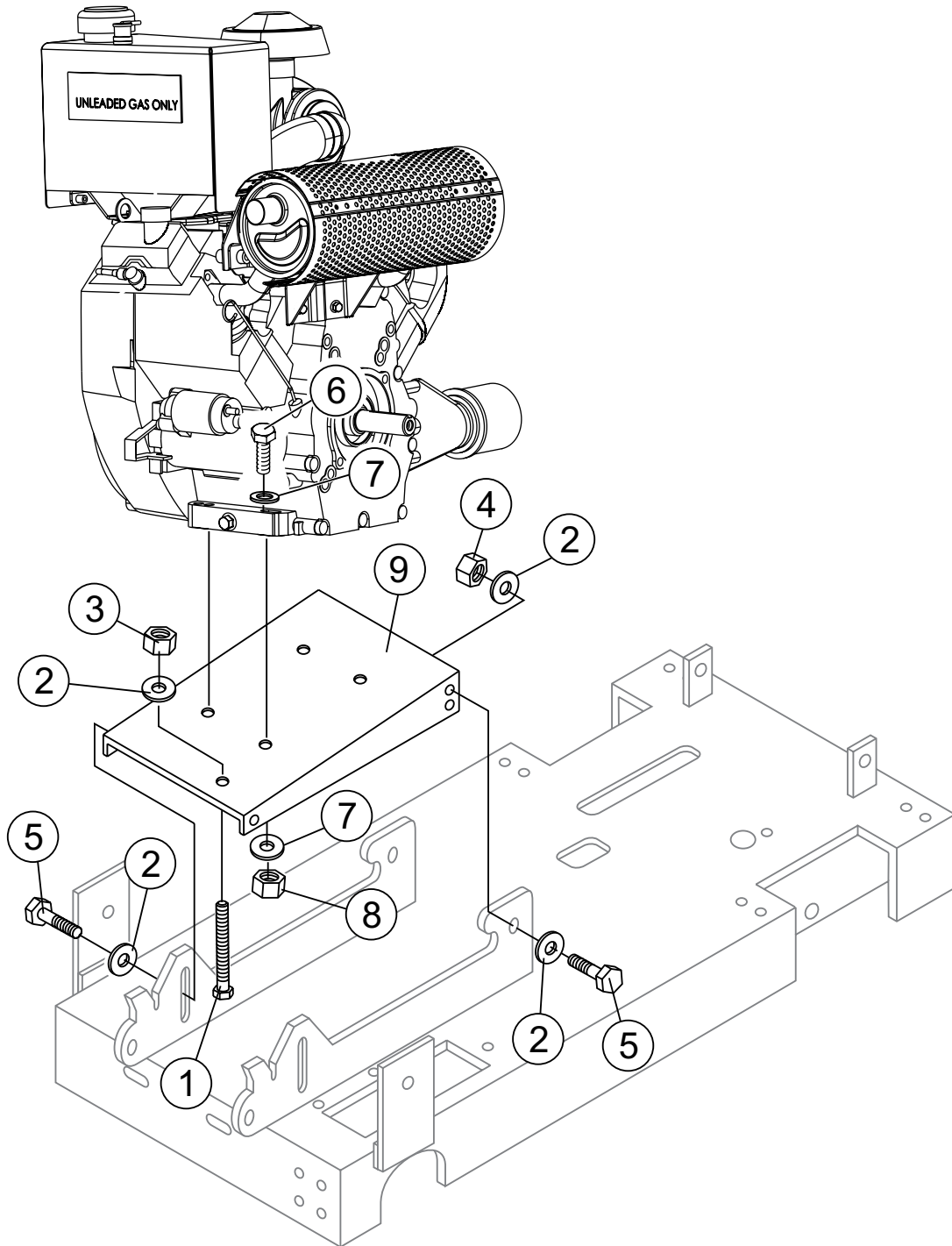


## CONSOLE ASSY.

---

<u>NO.</u>	<u>PART NO.</u>	<u>PART NAME</u>	<u>QTY.</u>	<u>REMARKS</u>
1	28796-351	HANDLE ASSY.	1	
2	15081	GRIP, 1" ID	2	
3	38274	SCREW, HHC 3/8-16 X .75	4	
4	1475	CONNECTOR SPLICE TAP	1	
5	35127	SWITCH, KILL MAGURA	1	
6	28091-401	SHIFT CONTROL ASSY.	1	
7	35299	SCREW, PHP M4-0.7X25MM	2	
8	28834-001	COVER, REAR	1	
9	19266	NUT, BLIND 1/4-20X.27-165	8	
12	49048	SCREW, HHFS 1/4-20 X 3/4 GRD 5	4	
13	35155	HARNESS, FCG KILL SWITCH	1	
14	28791-351	HOUSING ASSY.	1	
15	28805-001	COVER, CONSOLE SIDE	1	
16	29013-001	WRENCH, BOX END 1 1/2	1	

# ENGINE MOUNT ASSY.

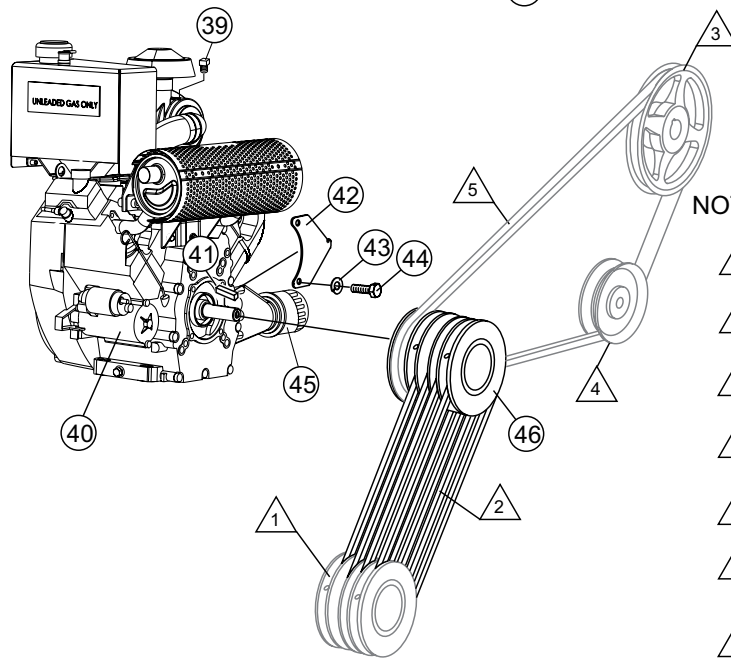
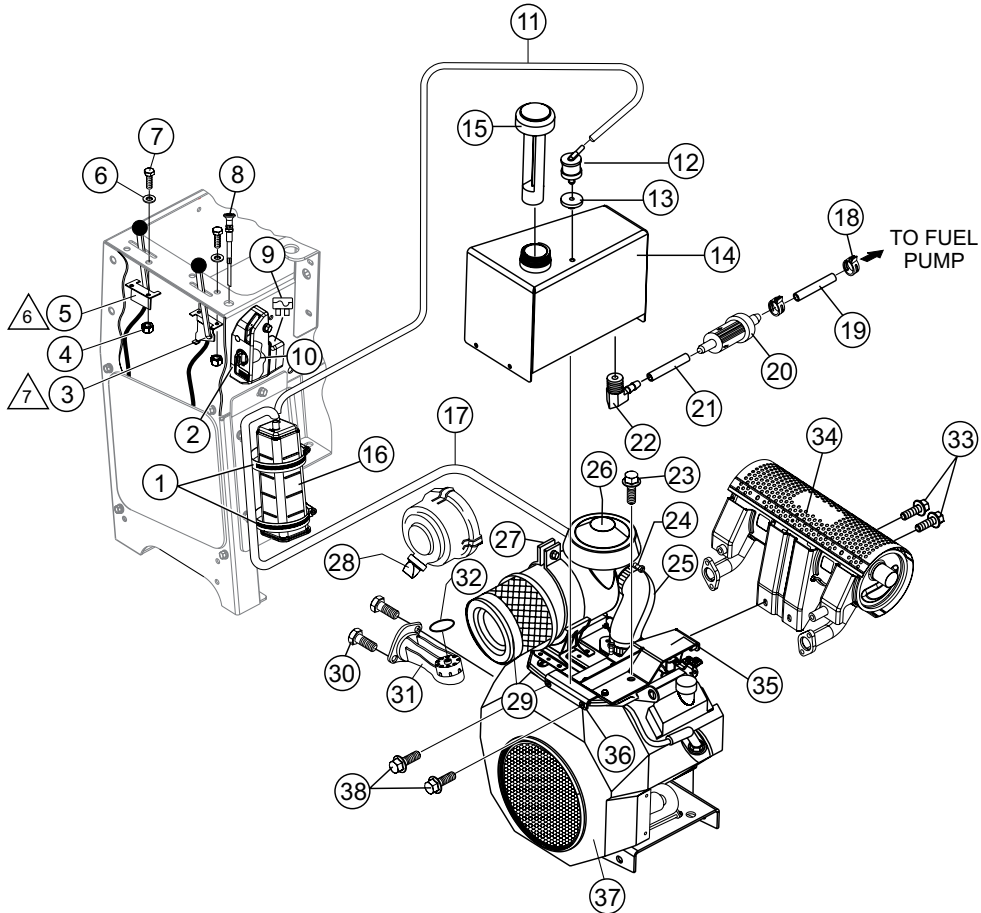


## ENGINE MOUNT ASSY.

---

<u>NO.</u>	<u>PART NO.</u>	<u>PART NAME</u>	<u>QTY.</u>	<u>REMARKS</u>
1	15868-032	SCREW, SQHS 1/2-13 X 4, CUP PLAIN	1	
2	0447	WASHER, FLAT SAE 1/2	9	
3	968011	NUT, HEX FINISH 1/2-13	1	
4	10176	NUT, NYLOC 1/2-13	4	
5	3214	SCREW, HHC 1/2-13 X 1-1/4	4	
6	9154	SCREW, HHC 3/8-16 X 1- 3/4	4	
7	10136	WASHER, FLAT SAE 3/8	8	
8	10133	NUT, NYLOC 3/8-16	4	
9	35507	ENGINE BASE ASSY.	1	

# ENGINE ASSY.



## NOTES:

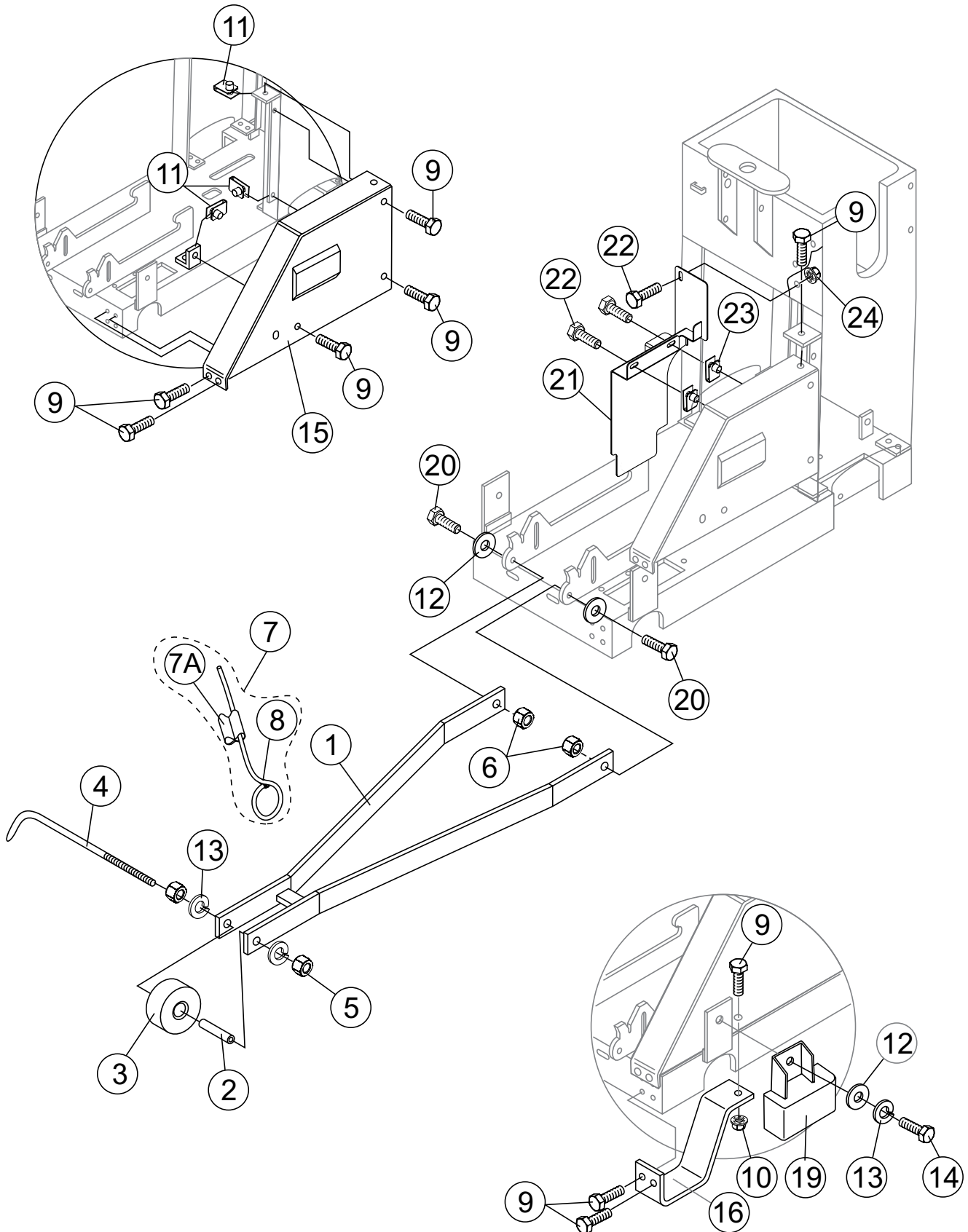
- ▲ 1 SEE BLADE SHAFT ASSY., ITEM 11
- ▲ 2 SEE BLADE SHAFT ASSY., ITEM 17
- ▲ 3 SEE HYDROSTATIC DRIVE ASSY., ITEM 14
- ▲ 4 SEE HYDROSTATIC DRIVE ASSY., ITEM 15
- ▲ 5 SEE HYDROSTATIC DRIVE ASSY., ITEM 25
- ▲ 6 ITEM 5, FWD/REV CONTROL LEVER INCLUDES CABLE
- ▲ 7 ITEM 3, SPEED CONTROL LEVER INCLUDES 50 IN. (1270 MM.) CABLE



# ENGINE ASSY.

<u>NO.</u>	<u>PART NO.</u>	<u>PART NAME</u>	<u>QTY.</u>	<u>REMARKS</u>
1	12277	CLAMP, HOSE WORM #36, 1-13/16 X 2-3/4	2	
2	35110ZV5V50	KEY, IGNITION	2	
3	15168	HANDLE, CONTROL, W/KNOB AND CABLE .....	1	.... SPEED CONTROL
4	10024	NUT, NYLOC 1/4-20	4	
5	28091-401	HANDLE, CONTROL, W/KNOB AND CABLE .....	1	.... FWD./REV.
6	0948	WASHER, FLAT SAE 1/4	4	
7	0131 A	SCREW, HHC 1/4-20 X 3/4	4	
8	35280	CABLE, CHOKE CONTROL 35 IN.	1	
9	9820043000	FUSE, MINI, 30 AMP	1	
10	35100Z6L003	SWITCH ASSY., COMBINATION	1	
11	60004	HOSE, FUEL .187 D 50PSI LOW PERM	1	
12	23508	VALVE, ROLL OVER, STD CP	1	
13	23507	GROMMET, ROLL OVER VALVE	1	
14	35503	FUEL TANK W/A, 20 HON SP2	1	
15	2712	CAP, W/GAUGE 7.5", "UNLEADED", EPA	1	
16	23505	CANISTER, CARBON, 390CC	1	
17	60028	HOSE, FUEL .312 D 50PSI LOW PERM.	1	
18	950024100008	CLAMP, TUBE (D10)	2	
19	16850Z6L000	TUBE COMP. A. FUEL	1	
20	16910Z6L003	FILTER, FUEL	1	
21	60013	HOSE, FUEL .250 D 50PSI LOW PERM.	1	
22	22082	FITTING, BRASS 90 4BARB -1/4MP	1	
23	12464	SCREW, HHC M6-1.0 X 16 MM	4	
24	9501858320	BAND AIR CLEANER CONNECTING TUBE	2	
25	17251Z6L810	TUBE, AIR CLEANER CONNECTING	1	
26	17320Z6LH001377	RAIN CAP	1	
27	9501858320	BAND A/C CONNECTING TUBE	2	
28	17300Z6LP522958	VACUATOR VALVE	1	
29	17210Z6LP821575	AIR FILTER ELEMENT	1	
30	957010601600	BOLT, FLANGE, 6X16	2	
31	35480Z6L003	SWITCH, ASSY., OIL LEVEL	1	
32	91309Z6L000	O-RING 37.9 X 2.4	1	
33	2299	SCREW, HHC M8-1.25 X 16MM	2	
34	35522	MUFFLER KIT, GX630 HI LEFT, HONDA VHLM	1	
35	35517	MOUNT, FUEL TANK W/A, SP2 20 HONDA	1	
36	19266	NUT, BLIND 1/4-20 X .027-.165	2	
37	35518	ENGINE, HONDA 20HP GX630RTXF2	1	
38	49048	SCREW, HHFS 1/4-20 X 3/4 GR5	2	
39	17300Z6LP522840	PIPE PLUG	1	
39	31200Z6L003	MOTOR ASSY., STARTER	1	
41	6059 B	KEY 1/4" SQ. X 2, 1018 STOCK	1	
42	35513	BRACKET, IDLER SPRING	1	
43	0161 C	WASHER, LOCK 5/16 MED	2	
44	16105	SCREW, HHC 5/16-24 X 3/4 PLATED	2	
45	15400PLMA01PE	FILTER, OIL	2	
46	35446	PULLEY, ENG. 43V26/A30 X 1-1/8" 5 GROOVE	1	

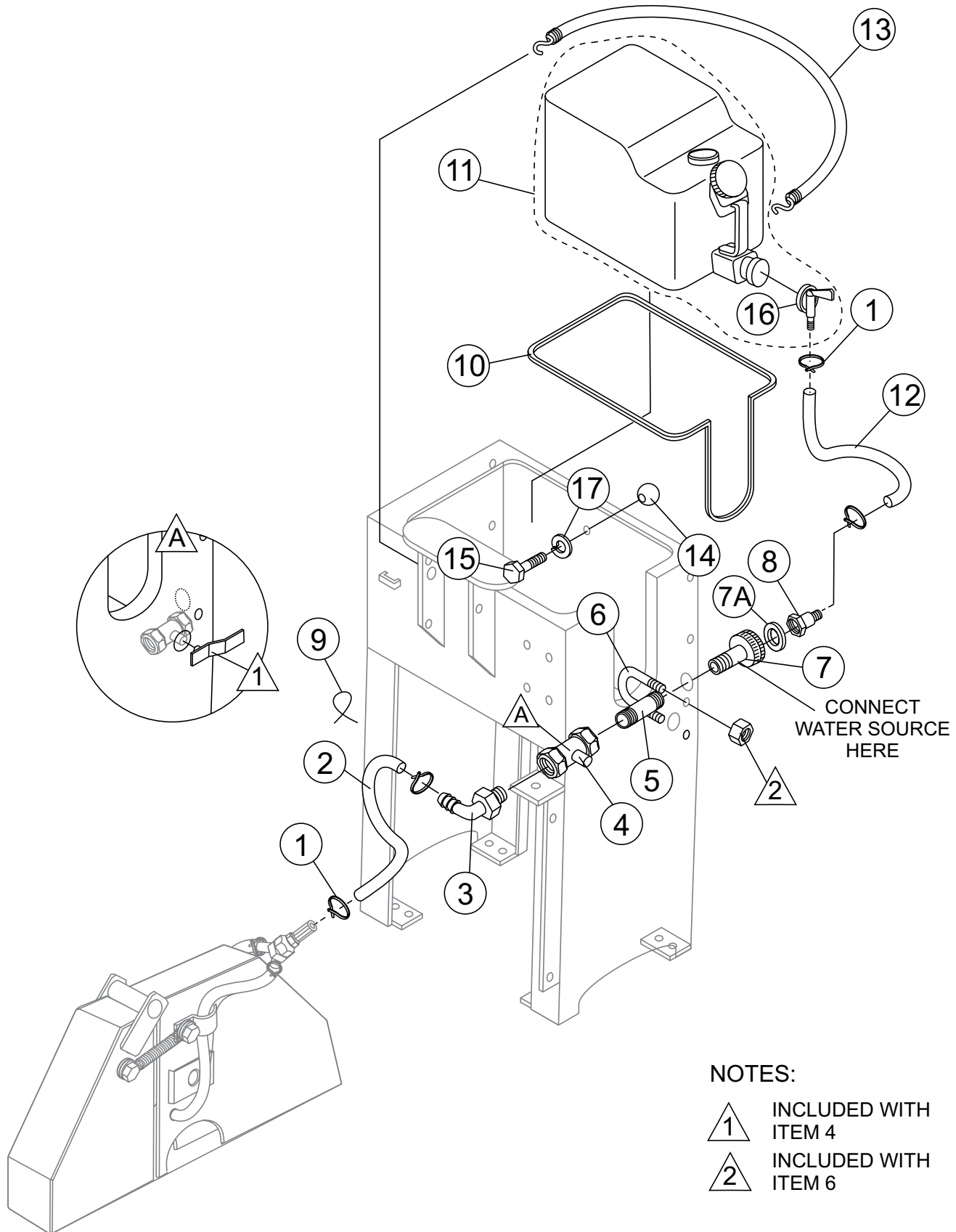
# POINTERS AND COVERS ASSY.



## POINTERS AND COVERS ASSY.

<u>NO.</u>	<u>PART NO.</u>	<u>PART NAME</u>	<u>QTY.</u>	<u>REMARKS</u>
1	28646-351	BLADE GUIDE WELDMENT	1	
2	28649-001	SPANNER BUSHING CSI	1	
3	28648-001	WHEEL, 3.00 X 1.25 .50 ID POLY CSI	1	
4	28647-001	POINTER	1	
5	1456	NUT, HEX FINISH 3/8-16	2	
6	10133	NUT, NYLOC 3/8-16	2	
7	15830	SASH, ASSY.....	2.....	INCLUDES ITEMS W/%
7A%	15114	SLEEVE, SASH	2	
8%	60087	ROPE, 1/4" NYLON, BRAIDED, WHITE 8' .....	1.....	8 FT. REQUIRED
9	36720	SCREW, HHFS 5/16-18 X 3/4 GR5	9	
10	49071	NUT, FLANGED 5/16-16 X 1-1/4" GR. 5	1	
11	35358	PALNUT, U, 5/16-18 X .05/.20 PANEL	3	
12	10136	WASHER, FLAT SAE 3/8	4	
13	0166 A	WASHER, LOCK 3/8 MED.	2	
14	0205	SCREW, HHC 3/8-16 X 1.0	3	
15	35511	BELT GUARD, SP2 20 HONDA	1	
16	28835-001	GUARD, PULLEY	1	
19	29745-554	SPINDLE GUARD ASSY. - RED	1	
20	1023	SCREW, HHC 3/8-16 X 1-1/4 GR5	7	
21	35509	GUARD, BELT	1	
22	49048	SCREW HHFS 1/4-20X3/4 GR.5	3	
23	11534	NUT, "U" TYPE, 1/4-20	2	
24	49070	NUT, FLANGED 1/4-20 SERRATED PLTD	1	

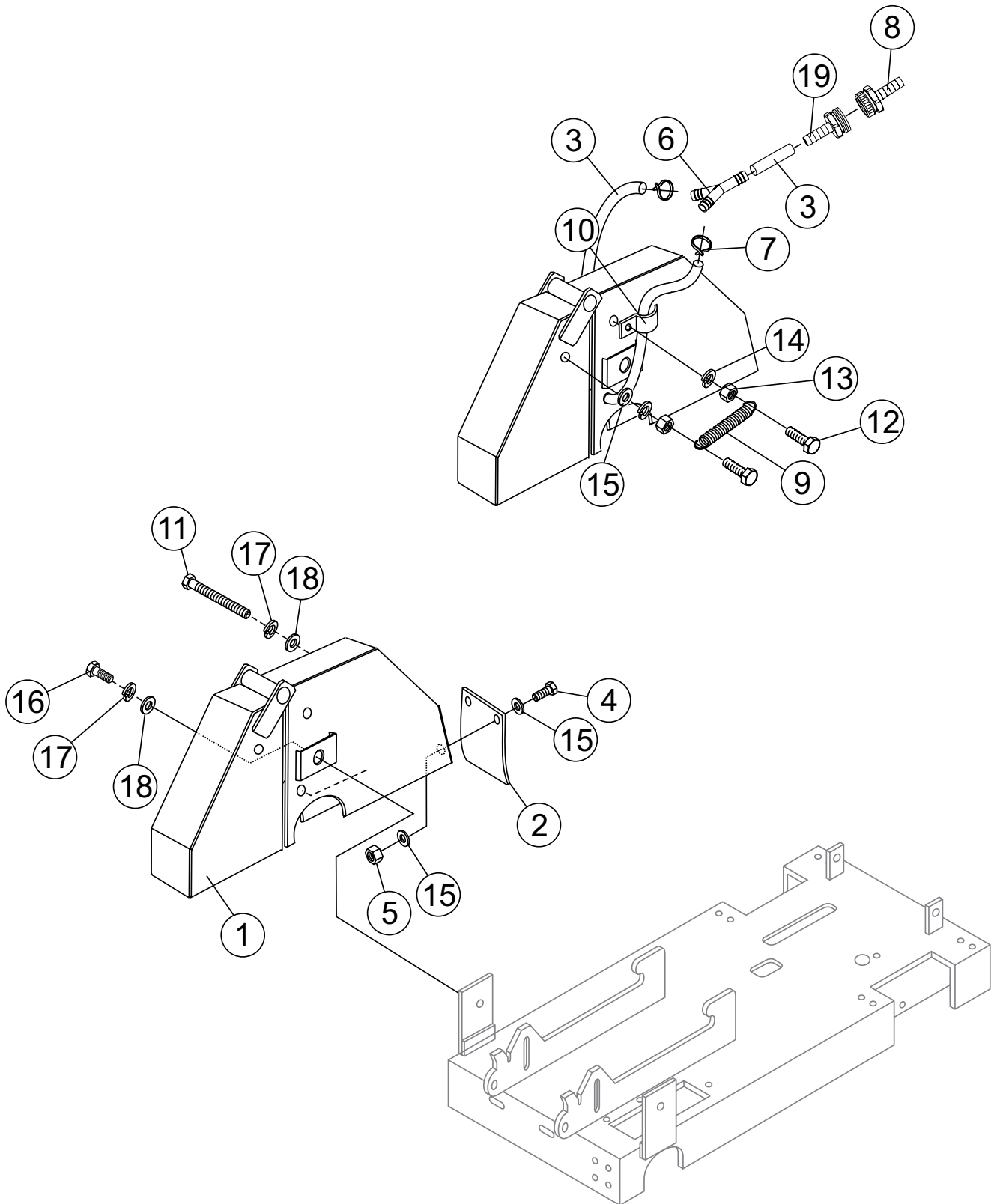
# WATER SYSTEM ASSY.



## WATER SYSTEM ASSY.

<u>NO.</u>	<u>PART NO.</u>	<u>PART NAME</u>	<u>QTY.</u>	<u>REMARKS</u>
1	12694-008	HOSE CLAMP, SPRING TYPE 7/8 O.D HOSE	4	
2	60088	HOSE, PVC BRAIDED .5 I.D. X .75 O.D.	1	
3	23566-001	FITTING, PLASTIC 90 1/2MP X 1/2BARB	1	
4	23259-001	VALVE, BALL 1/2 MPT BRASS NIBCO T585-70	1	
5	23254-001	FITTING, NIPPLE 1/2MP X 2 GALV.	1	
6	2399	U-BOLT 1" I.D. PLTD. W/NUTS	1	
7	15544	FITTING, BRASS 1/2FP-3/4F GRDN., STR	1	
7A	13336-001	WASHER, GARDEN HOSE	1	
8	24778-001	FITTING, BRASS 1/2 BARB X 3/4 GRDN	1	
9	1662	TIE, CABLE TY-RAP BLACK	2	
10	28861-501	TRIM, WATER TANK RUBBER	1	
11	28089-001	TANK, WATER ASSY., 5 GAL. ....	1	INCLUDES ITEM W/*
12	60002	HOSE, PVC CLEAR, .375 X .5 X 1.58"	2	
13	28862-001	CORD, TANK RETAINER	1	
14	28860-001	KNOB	1	
15	1579	HHCS 1/4-20 X 1/2	1	
16*	28089-002	VALVE, WATER TANK (SPIGOT ONLY)	1	
17	0181 B	WASHER, LOCL 1/4" MEDIUM	1	

# BLADE GUARD ASSY.

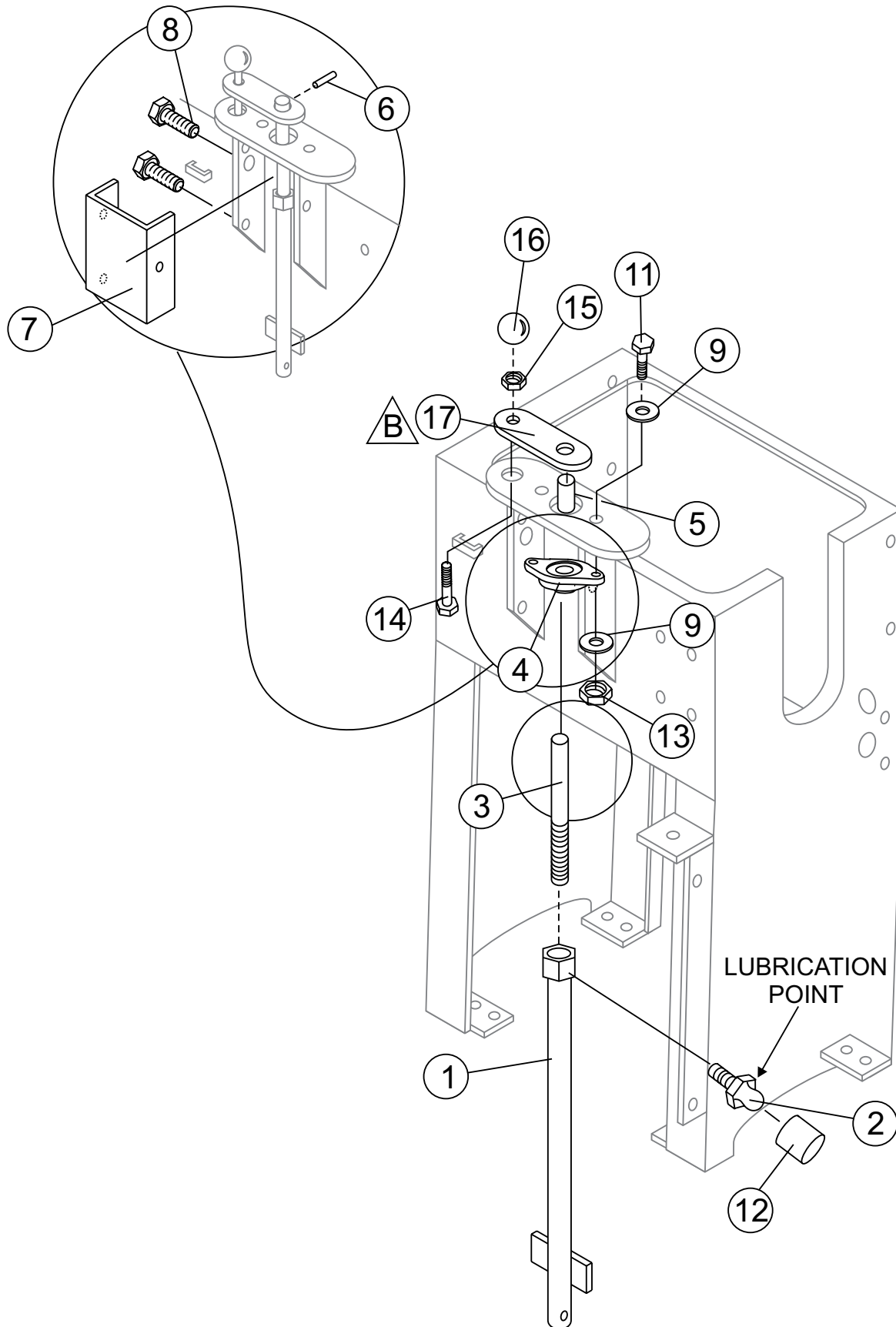


## BLADE GUARD ASSY.

---

<u>NO.</u>	<u>PART NO.</u>	<u>PART NAME</u>	<u>QTY.</u>	<u>REMARKS</u>
1	29406-354	BLADE GUARD ASSY., SP20" .....	1.....	SAFETY ITEM
2	28729-002	GUARD, SPLASH BLADE	1	
3	60021	HOSE, 3/8ID X 5/8 OD BRAIDED PVC "PAC" .....	3.....	1 PIECE = 1FT.
4	49048	SCREW, HHFS 1/4-20 X 3/4 GR5	2	
5	10024	NUT, NYLOC 1/4-20	2	
6	14233-004	FITTING, PLASTIC Y 6 BARB USP 64016	1	
7	12694-006	HOSE CLAMP, SPRING TYPE 3/4 O.D. HOSE	2	
8	24778-001	FITTING, BRASS 1/2BARB X 3/4F GRDN	1	
9	18626-001	SPRING TENSION, GUARD BLADE	2	
10	22129-001	PIPE STRAP 3/8	2	
11	21168	SCREW, HHC 3/8-16 X 4.75	1	
12	0424	SCREW, HHC 1/4-20 X 1-1/4	4	
13	0949	NUT, HEX FINISH 1/4-20 PLATED	4	
14	0181 B	WASHER, LOCK 1/4 MED.	4	
15	0948	WASHER, FLAT SAE 1/4	6	
16	38274	SCREW, HHFS 3/8-16 X .75 ZINC	1	
17	0166 A	WASHER, LOCK 3/8 MED.	2	
18	10136	WASHER, FLAT SAE 3/8	2	
19	28876-001	FITTING, BRASS 3/8BARB X 3/4M GRDN	1	

# MANUAL RAISE AND LOWER ASSY. (20 IN.)



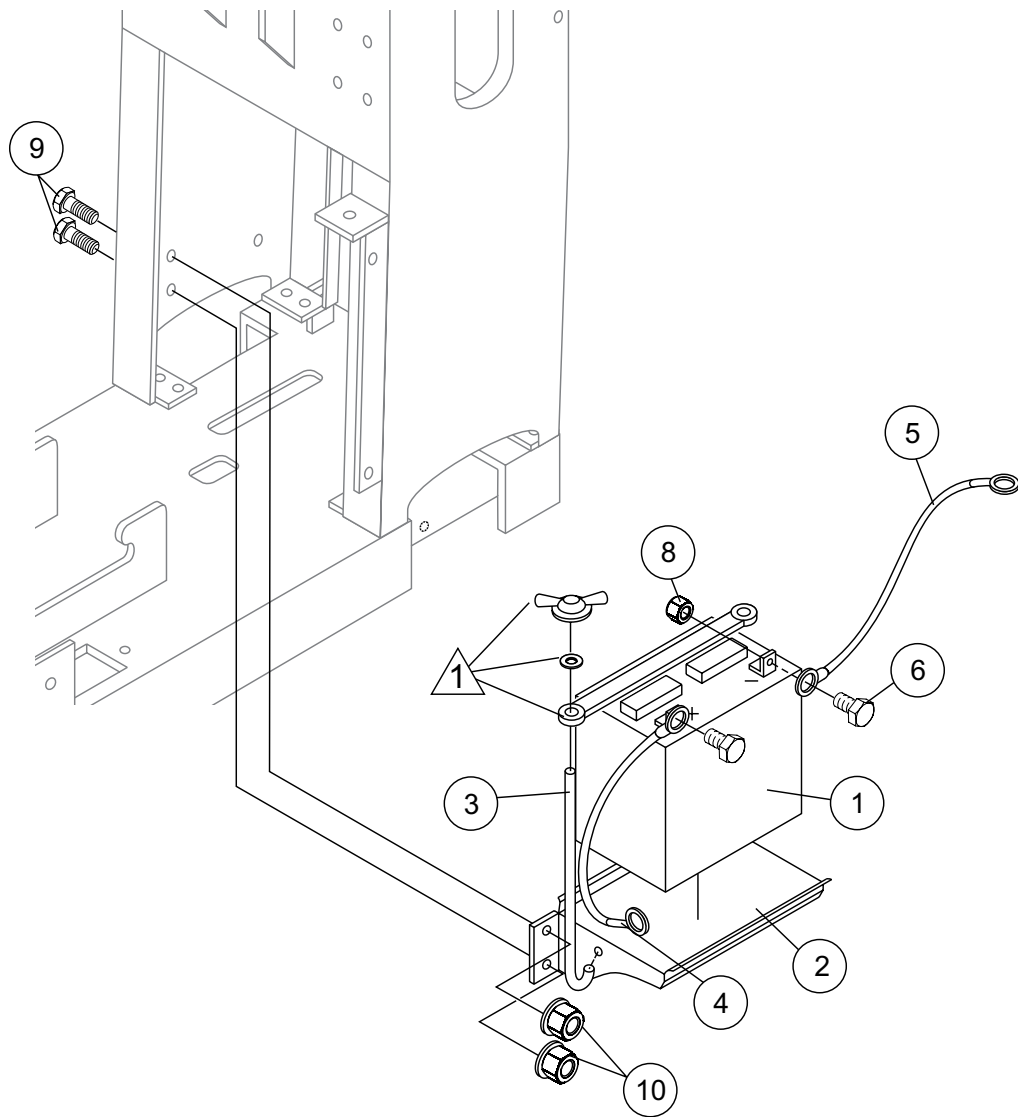


## **MANUAL RAISE AND LOWER ASSY. (20 IN.)**


---

<b><u>NO.</u></b>	<b><u>PART NO.</u></b>	<b><u>PART NAME</u></b>	<b><u>QTY.</u></b>	<b><u>REMARKS</u></b>
1	28793-352	JACKPOST ASSY.	1	
2	2621	ZERK, GREASE STR. 1/4-28	1	
3	28806-001	JACKSCREW	1	
4	28083-001	BEARING, FLANGE	1	
5	28809-001	SPACER, JACKSCREW	1	
6	4568	PIN, ROLL 3/16 X 1	1	
7	28877-351	SCREW COVER ASSY., RED	1	
8	49048	SCREW, HHFS 1/4-20 X 3/4 GR5	3	
9	0948	WASHER, FLAT SAE 1/4	4	
11	0424	SCREW, HHC 1/4-20 X 1	2	
12	1162 A	CAP, GREASE ZERK, #2	1	
13	10024	NUT, NYLOC 1/4-20	2	
14	1121	SCREW, HHC 3/8-16 X 2 3/4	1	
15	1876	NUT, HEX JAM 3/8-16 CLASS 2B	1	
16	4403	KNOB, SHIFT	1	
17	28808-002	ARM-CRANK	1	

# BATTERY ASSY.



## NOTES:

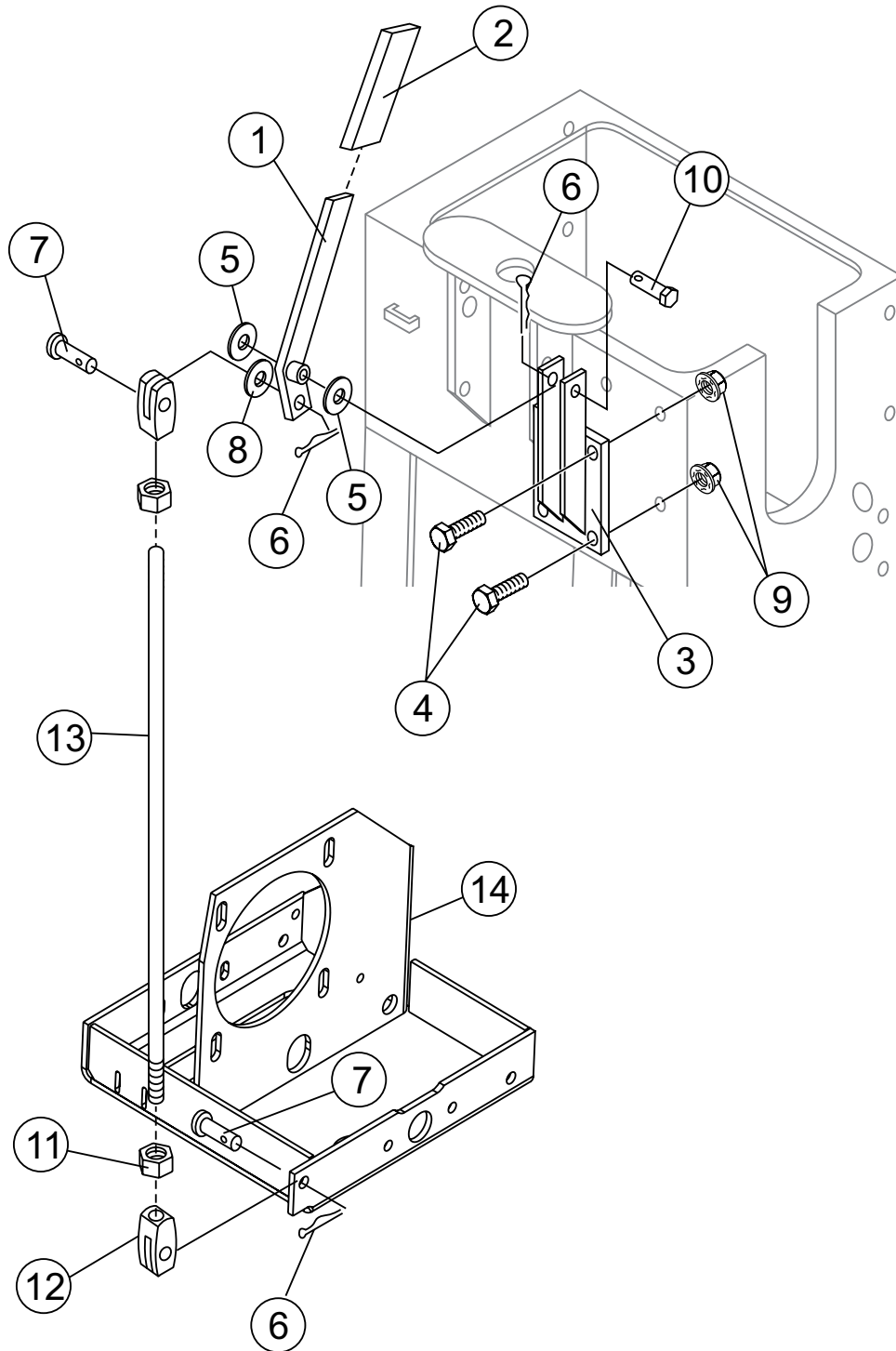
 INCLUDED WITH  
ITEM 3

## BATTERY ASSY.

---

<u>NO.</u>	<u>PART NO.</u>	<u>PART NAME</u>	<u>QTY.</u>	<u>REMARKS</u>
1	4671	BATTERY, WET GR.U1, GT-X GOLD LA	1	
2	28096-001	BRACKET BATTERY	1	
3	28095-401	BATTERY HOLD DOWN KIT 425-405	1	
4	28093-001	CABLE, BATTERY POS 6GA X 42" RING TONGUE	1	
5	28094-001	STRAP, GROUND	1	
6	49048	SCREW, HHFS 1/4-20 X 3/4 GR5	2	
8	49070	NUT, FLANGED SERRATED PLTD. 1/4-20	2	
9	36720	SCREW, HHFS 5/16-18 X 3/4 GR5	3	
10	49071	NUT, FLANGED SERRATED PLTD. 5/16-18	3	

# TRANSMISSION ENGAGE LEVER ASSY.

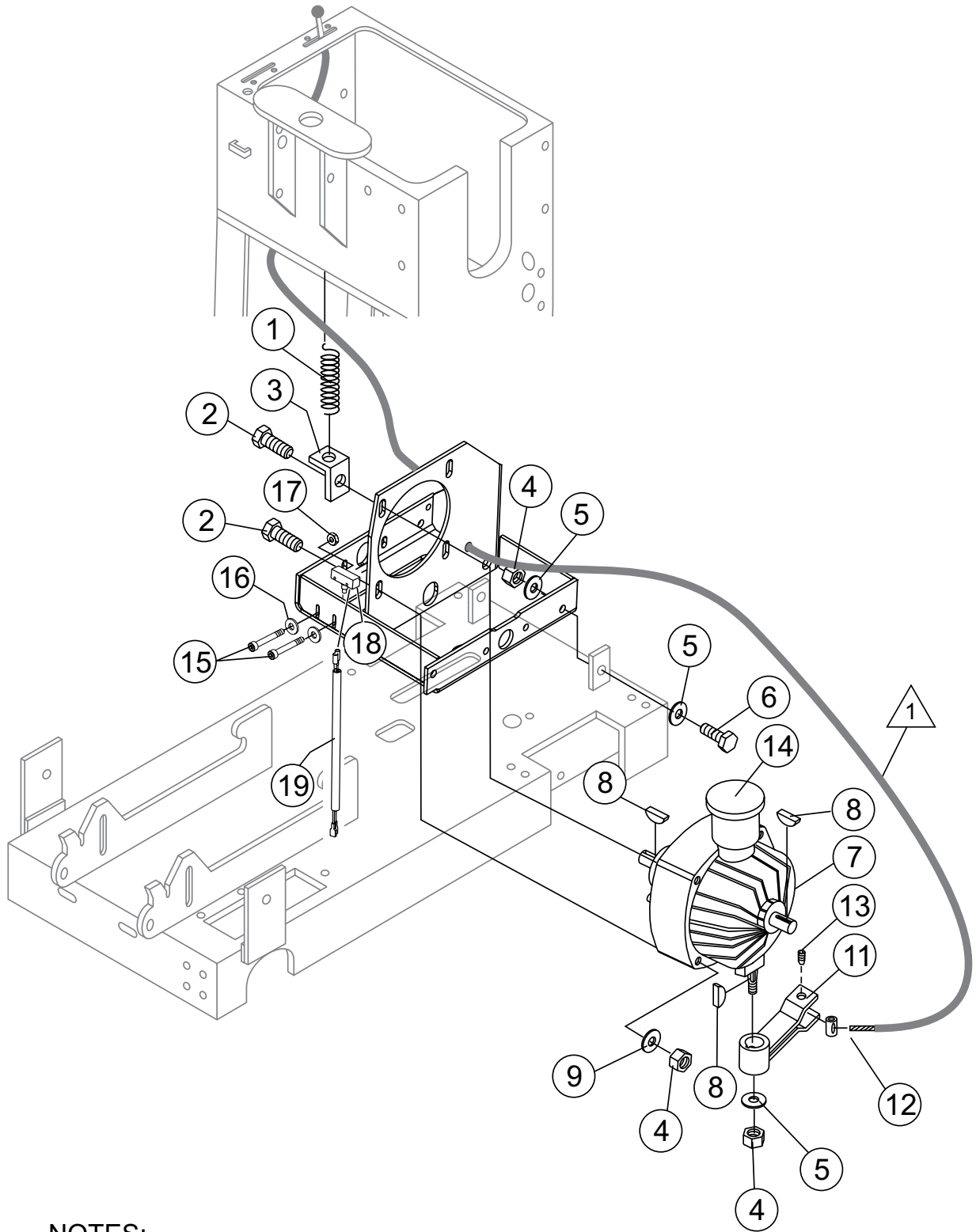


## **TRANSMISSION ENGAGE LEVER ASSY.**

---

<b><u>NO.</u></b>	<b><u>PART NO.</u></b>	<b><u>PART NAME</u></b>	<b><u>QTY.</u></b>	<b><u>REMARKS</u></b>
1	28825-351	LEVER ASSY. TRANS. ENGAGE	1	
2	3360	GRIP, 1/4 X 1 BLACK	1	
3	36720	MOUNT ASSY., LEVER RED	1	
4	0655	SCREW, HHFS 5/16-18 X 3/4 GR5	4	
5	10136	WASHER, FLAT SAE 3/8	6	
6	6014 B	PIN, COTTER 3/32D X 1.0	1	
7	5291	PIN, CLEVIS 3/8	2	
8	0300 B	WASHER, FLAT SAE 5/16	2	
9	49071	NUT, FLANGED SERRATED PLTD 5/16-18	8	
10	08326-019	PIN, CLEVIS 3/8 X 2" USEABLE LENGTH	1	
11	2199	NUT, HEX JAM 3/8-24	2	
12	08327-012	YOKE END, 3/8-24 X 2.50	2	
13	28830-001	ROD, TRANS. ENGINE	1	
14	28819-351	TRANS. BRACKET ASSY.	1	

# HYDROSTATIC TRANSMISSION ASSY.



## NOTES:

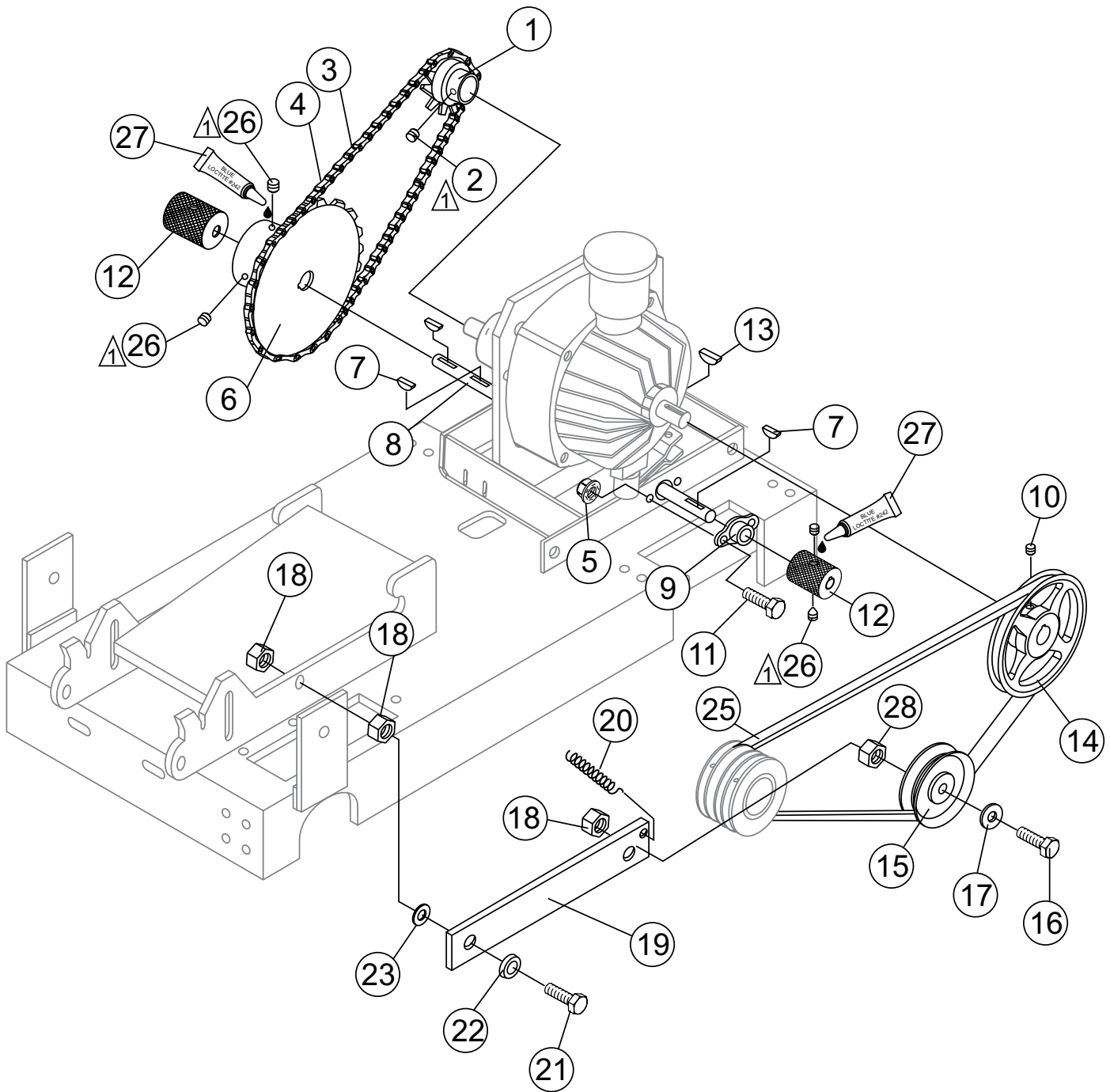
- △ 1 FORWARD/REVERSE CABLE ASSY.  
INCLUDED WITH SHIFT CONTROL  
LEVER ITEM 5, ENGINE ASSY.

## **HYDROSTATIC TRANSMISSION ASSY.**

---

<b><u>NO.</u></b>	<b><u>PART NO.</u></b>	<b><u>PART NAME</u></b>	<b><u>QTY.</u></b>	<b><u>REMARKS</u></b>
1	20559-001	SPRING, EXT. 3.38FL X 71OD X .105	1	
2	1493	SCREW, HHC 3/8-18 X 3.25	4	
3	28836-001	LINK, RETURN SPRING	1	
4	10133	NUT, NYLOC 3/8-16	6	
5	10136	WASHER, FLAT SAE 3/8	7	
6	1023	SCREW, HHC 3/8-16 X 1-1/4 GR 5	2	
7	15354	TRANSMISSION, HYD EATON	1	
8	1578	KEY, WOODRUFF #3	2	
9	4001	WASHER, FLAT USS 3/8 PLD	4	
10	1456	NUT, HEX FINISH 3/8-16	4	
11	28828-351	SHIFT ARM ASSY.	1	
12	28829-001	PIN, PIVOT	2	
13	10450	SCREW, SHS 10-32 X 1/4	1	
14	103530-000	CAP, TRANSMISSION	1	
15	923199	SCREW, SHC 8-32 X 1-1/4	2	
16	15173	WASHER, FLAT, #8	2	
17	13287	NUT, NYLOC 8-32	2	
18	2584	SWITCH, PUSH BUTTON	1	
19	35525	HARNESS, NEUTRAL SWITCH, SP2S20H	1	

# HYDROSTATIC DRIVE ASSY.



## NOTES:

-  APPLY BLUE LOCTITE #242  
P/N 60091



## HYDROSTATIC DRIVE ASSY.

<u>NO.</u>	<u>PART NO.</u>	<u>PART NAME</u>	<u>QTY.</u>	<u>REMARKS</u>
1	23227-001	SPROCKET, TRANSMISSION 12 TOOTH MACH	1	
2	25039	SCREW, SHS 10-24 X 1/4	2	
3	19371-023	CHAIN, ROLLER ANSI STANDARD	1	
4	10504-035	LINK, CHAIN	1	
5	49071	NUT, FLANGED SERRATED PLTD, 5/16-18	2	
6	28084-001	SPROCKET, 3548 X 3/4	1	
7	0126	KEY, WOODRUFF #9	3	
8	28832-001	JACKSHAFT	1	
9	23284-001	BEARING, FLANGE .34SQ x 3/4ID	2	
10	25354	SCREW, SHS 1/4-20 X 1/2 HOLOKROME	1	
11	9091	SCREW, HHFS 5/16-18 X 1 GR5	2	
12	28831-001	GEAR, DRIVE	2	
13	1578	KEY, WOODRUFF #3	3	
14	28087-001	PULLEY, MA60 X 17MM	1	
15	25682-001	IDLER PULLEY	1	
16	1665	SCREW, HHC 3/8-16 X 2	1	
17	10136	WASHER, FLAT SAE 3/8	1	
18	10133	NUT, NYLOC 3/8-16	3	
19	23303-001	IDLER ARM	1	
20	23230-001	SPRING EXT. IDLE	1	
21	1284	SCREW, HHC 3/8-16 X 1 1/2	1	
22	18574-004	WASHER, BELLEVILLE 3/8	1	
23	28864-001	WASHER, FIBRE	1	
25	07055-051	V-BELT, TRANSMISSION 4L510	1	
26	0130 A	SCREW, SHS 1/4 X 20 X 1/4	4	
27	60091	LOCTITE, BLUE #242	1	
28	1456	NUT, HEX FINISH 3/8-1	1	