

PARTS MANUAL



Mikasa **SERIES**
MODEL MTR40F
TAMPING RAMMER
(ROBIN EH090D/EH092D GASOLINE ENGINES)

Revision #4 (10/01/20)

THIS MANUAL MUST ACCOMPANY THE EQUIPMENT AT ALL TIMES.

TABLE OF CONTENTS

MTR40F Tamping Rammer

| | |
|--|-------|
| Table Of Contents | 3 |
| Explanation Of Codes In Remarks Column | 4 |
| Suggested Spare Parts | 5 |
| Name Plate and Decals | 6-7 |
| Crankcase and Engine Assembly | 8-11 |
| Guide Cylinder Assembly | 12-13 |
| Tank and Handle Assembly | 14-15 |
| Foot Assembly | 16-17 |
| Narrow Foot Assembly (Option) | 18-19 |
| Trench Shoe Assembly (Option) | 20-21 |

Robin EH-090D Engine

| | |
|--|-------|
| Crankcase Assembly | 22-23 |
| Crankshaft and Piston Assembly | 24-25 |
| Intake and Exhaust Assembly | 26-27 |
| Governor Assembly | 28-29 |
| Blower Housing and Recoil Starter Assy. | 30-31 |
| Carburetor Assembly | 32-33 |
| Electric Device Assembly | 34-35 |

Robin EH-092D Engine

| | |
|--------------------------------------|-------|
| Crankcase Assembly | 36-37 |
| Crankshaft and Piston Assembly | 38-39 |
| Intake and Exhaust Assembly | 40-41 |
| Carburetor Assembly | 42-43 |
| Air Cleaner Assembly | 44-45 |
| Governor, Operation Assembly | 46-47 |
| Blower Housing Assembly | 48-49 |
| Recoil Starter Assembly | 50-51 |
| Accessories Assembly | 52-53 |

NOTICE

Specification and part number are subject to change without notice.

EXPLANATION OF CODES IN THE REMARKS COLUMN

The following section explains the different symbols and remarks used in the Parts section of this manual. Use the help numbers found on the back page of the manual if there are any questions.

NOTICE

The contents and part numbers listed in the parts section are subject to change **without notice**. Multiquip does not guarantee the availability of the parts listed.

SAMPLE PARTS LIST

| NO. | PART NO. | PART NAME | QTY. | REMARKS |
|-----|----------|---------------------|------|---------------------|
| 1 | 12345 | BOLT..... | 1 | INCLUDES ITEMS W/% |
| 2% | | WASHER, 1/4 IN..... | | NOT SOLD SEPARATELY |
| 2% | 12347 | WASHER, 3/8 IN..... | 1 | MQ-45T ONLY |
| 3 | 12348 | HOSE | A/R | MAKE LOCALLY |
| 4 | 12349 | BEARING | 1 | S/N 2345B AND ABOVE |

NO. Column

Unique Symbols — All items with same unique symbol

(@, #, +, %, or >) in the number column belong to the same assembly or kit, which is indicated by a note in the “Remarks” column.

Duplicate Item Numbers — Duplicate numbers indicate multiple part numbers, which are in effect for the same general item, such as different size saw blade guards in use or a part that has been updated on newer versions of the same machine.

NOTICE

When ordering a part that has more than one item number listed, check the remarks column for help in determining the proper part to order.

PART NO. Column

Numbers Used — Part numbers can be indicated by a number, a blank entry, or TBD.

TBD (To Be Determined) is generally used to show a part that has not been assigned a formal part number at the time of publication.

A blank entry generally indicates that the item is not sold separately or is not sold by Multiquip. Other entries will be clarified in the “Remarks” Column.

QTY. Column

Numbers Used — Item quantity can be indicated by a number, a blank entry, or A/R.

A/R (As Required) is generally used for hoses or other parts that are sold in bulk and cut to length.

A blank entry generally indicates that the item is not sold separately. Other entries will be clarified in the “Remarks” Column.

REMARKS Column

Some of the most common notes found in the “Remarks” Column are listed below. Other additional notes needed to describe the item can also be shown.

Assembly/Kit — All items on the parts list with the same unique symbol will be included when this item is purchased.

Indicated by:

“INCLUDES ITEMS W/(unique symbol)”

Serial Number Break — Used to list an effective serial number range where a particular part is used.

Indicated by:

“S/N XXXXX AND BELOW”

“S/N XXXX AND ABOVE”

“S/N XXXX TO S/N XXX”

Specific Model Number Use — Indicates that the part is used only with the specific model number or model number variant listed. It can also be used to show a part is NOT used on a specific model or model number variant.

Indicated by:

“XXXXX ONLY”

“NOT USED ON XXXX”

“Make/Obtain Locally” — Indicates that the part can be purchased at any hardware shop or made out of available items. Examples include battery cables, shims, and certain washers and nuts.

“Not Sold Separately” — Indicates that an item cannot be purchased as a separate item and is either part of an assembly/kit that can be purchased, or is not available for sale through Multiquip.

SUGGESTED SPARE PARTS

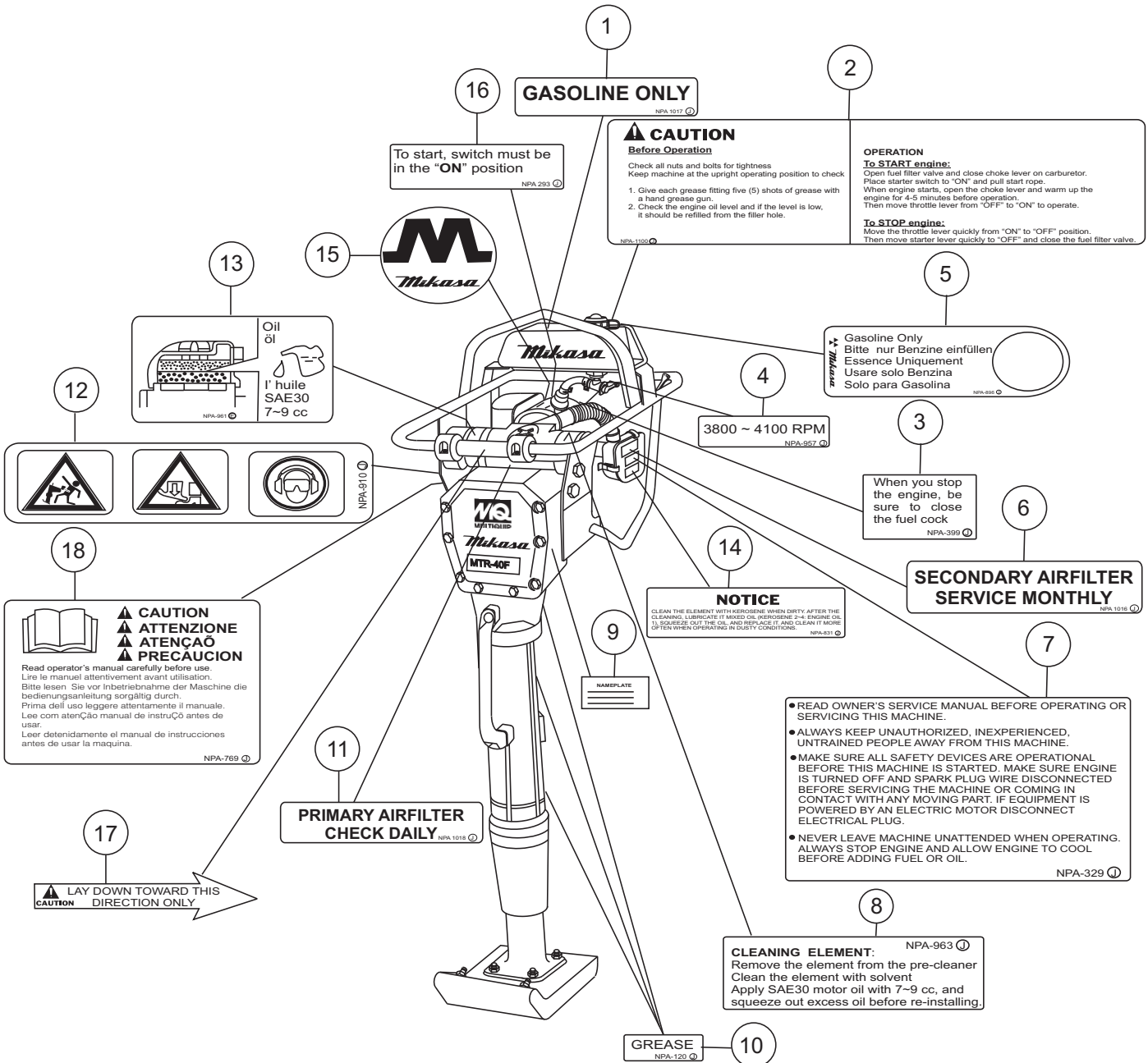
MTR40F RAMMER 3 TO 5 UNITS WITH ROBIN EH-09D45050/EH-092D45010 ENGINES

| Qty. | P/N | Description |
|------|------------|-----------------------------|
| 1 | 362910060 | LEVER, THROTTLE |
| 1 | 956100040 | THROTTLE WIRE |
| 3 | 362030030 | ELEMENT, AIR CLEANER |
| 5 | 362030020 | PACKING, AIR CLEANER |
| 3 | 362455670 | ELEMENT, CRANKCASE |
| 1 | 361910021 | CAP, FUEL TANK W/ STRAP |
| 1 | 954300720 | COCK, FUEL ASSY. |
| 2 | 301419750 | FILTER, IN-LINE FUEL |
| 3 | 2743260307 | ELEMENT, SET ENGINE |
| 1 | 0660000361 | STOP, SWITCH |
| 3 | 0650140470 | SPARK PLUG, NKG |
| 1 | 362454441 | CLUTCH |
| 3 | 2745011108 | STARTER ROPE |
| 1 | 954404890 | FILTER, FUEL TANK (UPPER) |
| 1 | 954406010 | STRAINER, FUEL TANK (LOWER) |

NOTICE

Part number on this Suggested Spare Parts List may supersede/replace the P/N shown in the text pages of this book.

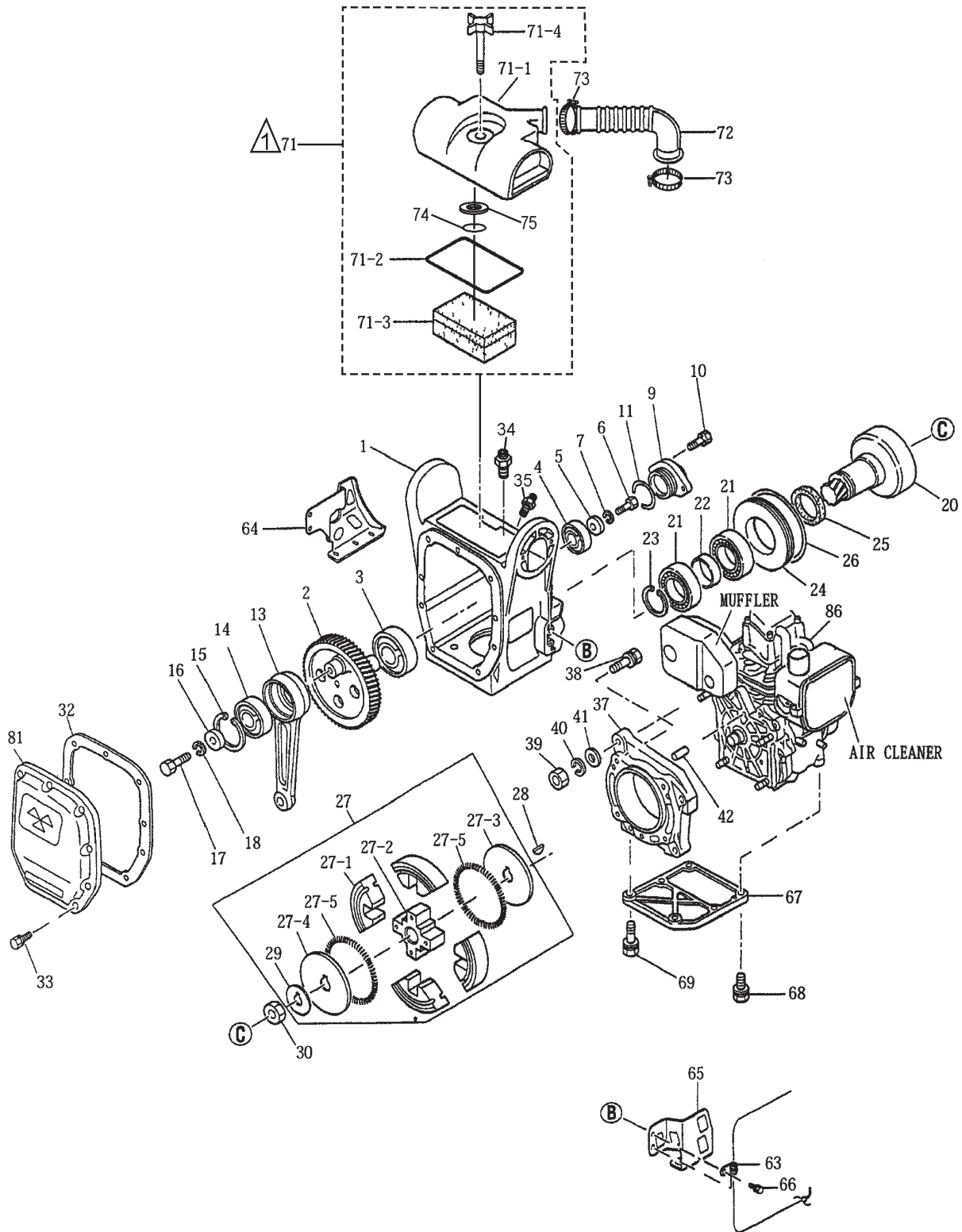
NAMEPLATE AND DECALS



NAMEPLATE AND DECALS

| <u>NO</u> | <u>PART NO</u> | <u>PART NAME</u> | <u>QTY.</u> | <u>REMARKS</u> |
|-----------|----------------|------------------------------|-------------|------------------------------|
| 1 | NPA1017 | DECAL: GASOLINE ONLY | 1 | |
| 2 | NPA1100 | DECAL: CAUTION (OPERATION) | 1 | |
| 3 | 920203990 | DECAL: CAUTION (FUEL COCK) | 1 | |
| 4 | NPA957 | DECAL: ENGINE RPM | 1 | |
| 5 | NPA896 | DECAL: ELEMENT SET | 1 | |
| 6 | NPA1016 | DECAL: SECONDARY AIR FILTER | 1 | |
| 7 | 920203290 | DECAL: CAUTION | 1 | |
| 8 | 920209630 | DECAL: CLEANING ELEMENT | 1 | |
| 9 | 920209910 | PLATE: SERIAL NO. | 1 | CONTACT MQ PARTS DEPT. |
| 10 | 920101200 | DECAL: GREASE | 3 | |
| 11 | NPA1018 | DECAL: PRIMARY AIR FILTER | 1 | |
| 12 | 920209100 | DECAL: RAMMER BOOT & HEARING | 1 | |
| 13 | 920209610 | DECAL: DECAL OIL 7-9 CC | 1 | |
| 14 | NPA831 | DECAL: CAUTION/OIL INJECT | 1 | |
| 15 | 920100240 | DECAL: (M-MARK) | 1 | |
| 16 | 920202930 | DECAL: SWITCH-ON | 1 | |
| 17 | NPA691 | DECAL: LAYDOWN | 1 | |
| 18 | NPA769 | DECAL: CAUTION | 1 | |

CRANKCASE AND ENGINE ASSY.



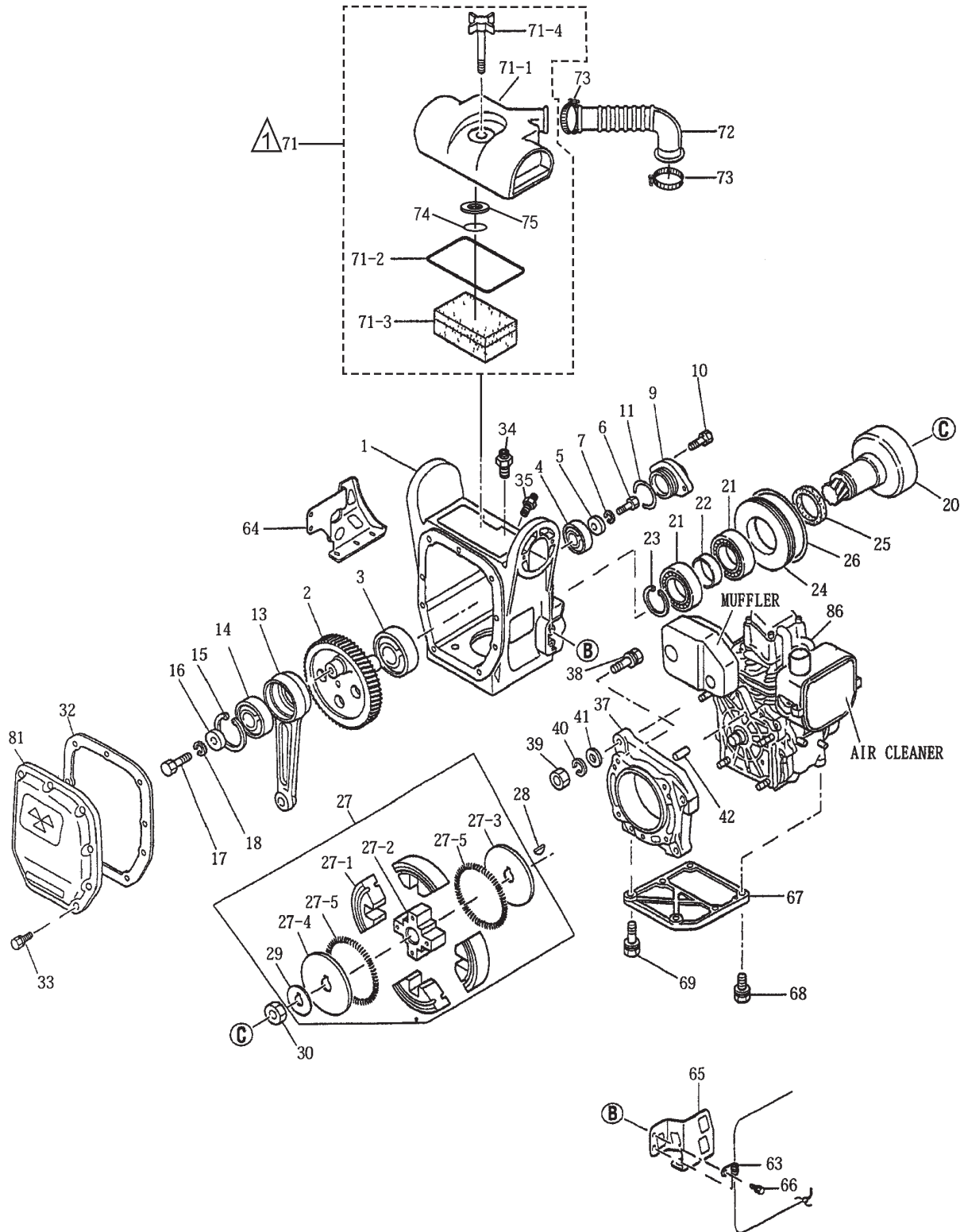
NOTES:

A AIR CLEANER ASSY., INCLUDES ITEMS WITHIN DASHED LINES EXCEPT FOR ITEMS 74 AND 75.

CRANKCASE AND ENGINE ASSY.

| <u>NO</u> | <u>PART NO</u> | <u>PART NAME</u> | <u>QTY.</u> | <u>REMARKS</u> |
|-----------|----------------|--------------------------------|-------------|--------------------|
| 1 | 305117260 | CRANK CASE | 1 | |
| 2 | 305343780 | CRANK GEAR | 1 | |
| 3 | 041006305 | BEARING 6305Z | 1 | |
| 4 | 041006203 | BEARING 6203Z | 1 | |
| 5 | 952401450 | WASHER 8.5 x 22 x 3 | 1 | |
| 6 | 001220825 | BOLT 8 x 25 T | 1 | |
| 7 | 030208200 | WASHER, LOCK M8 | 1 | |
| 9 | 362455660 | BEARING COVER | 1 | |
| 10 | 002210620 | BOLT 6X20 H,SW | 2 | |
| 11 | 050100350 | O-RING G-35 | 1 | |
| 13 | 305333090 | CONNECTING ROD | 1 | |
| 14 | 042006304 | BEARING 6304ZZ | 1 | |
| 15 | 080100520 | STOP RING R-52 | 1 | |
| 16 | 952400130 | WASHER 9304 | 1 | |
| 17 | 001220825 | BOLT 8 x 25 T | 1 | |
| 18 | 030208200 | WASHER, LOCK M8 | 1 | |
| 20 | 303010084 | PINION | 1 | |
| 21 | 042006007 | BEARING 6007ZZ | 2 | |
| 22 | 351437750 | SPACER 35.4-42.7-11 | 1 | |
| 23 | 080200350 | STOP RING S-35 | 1 | |
| 24 | 351421900 | SPACER, CLUTCH DRUM | 1 | |
| 25 | 060504010 | OIL SEAL VB-40525 | 1 | |
| 26 | 050300900 | O-RING S-90 | 1 | |
| 27 | 362454441 | CLUTCH ASSY. CE120P 1.6T | 1 | INCLUDES ITEMS W/* |
| 27-1* | 943020020 | CLUTCH SHOE C812 | 4 | |
| 27-2* | 943050050 | CLUTCH BOSS C812 | 1 | |
| 27-3* | 943060100 | CLUTCH GUIDE (A) | 1 | |
| 27-4* | 943060020 | CLUTCH GUIDE (B) | 1 | |
| 27-5* | 943030021 | CLUTCH SPRING | 2 | |
| 28 | 0053204201 | WOODRUFF KEY | 1 | |
| 29* | 301010210 | LOCK WASHER, CLUTCH | 1 | |
| 30 | 0173120010 | LOCK NUT | 1 | |
| 32 | 362341610 | PACKING, FRONT COVER | 1 | |
| 33 | 002200620 | BOLT 6 x 20 H,SW | 9 | |
| 34 | 351010050 | GREASE FITTING A-MT6X1 | 1 | |
| 35 | 351010320 | GREASE FITTING B-MT6X1 | 1 | |
| 37 | 2741500123 | ADAPTER FLANGE | 1 | |
| 38 | 0011408400 | BOLT AND WASHER ASSY. | 4 | |
| 39 | 0021808000 | NUT | 4 | |
| 40 | 0032008000 | WASHER, LOCK | 4 | |

CRANKCASE AND ENGINE ASSY.



NOTES:

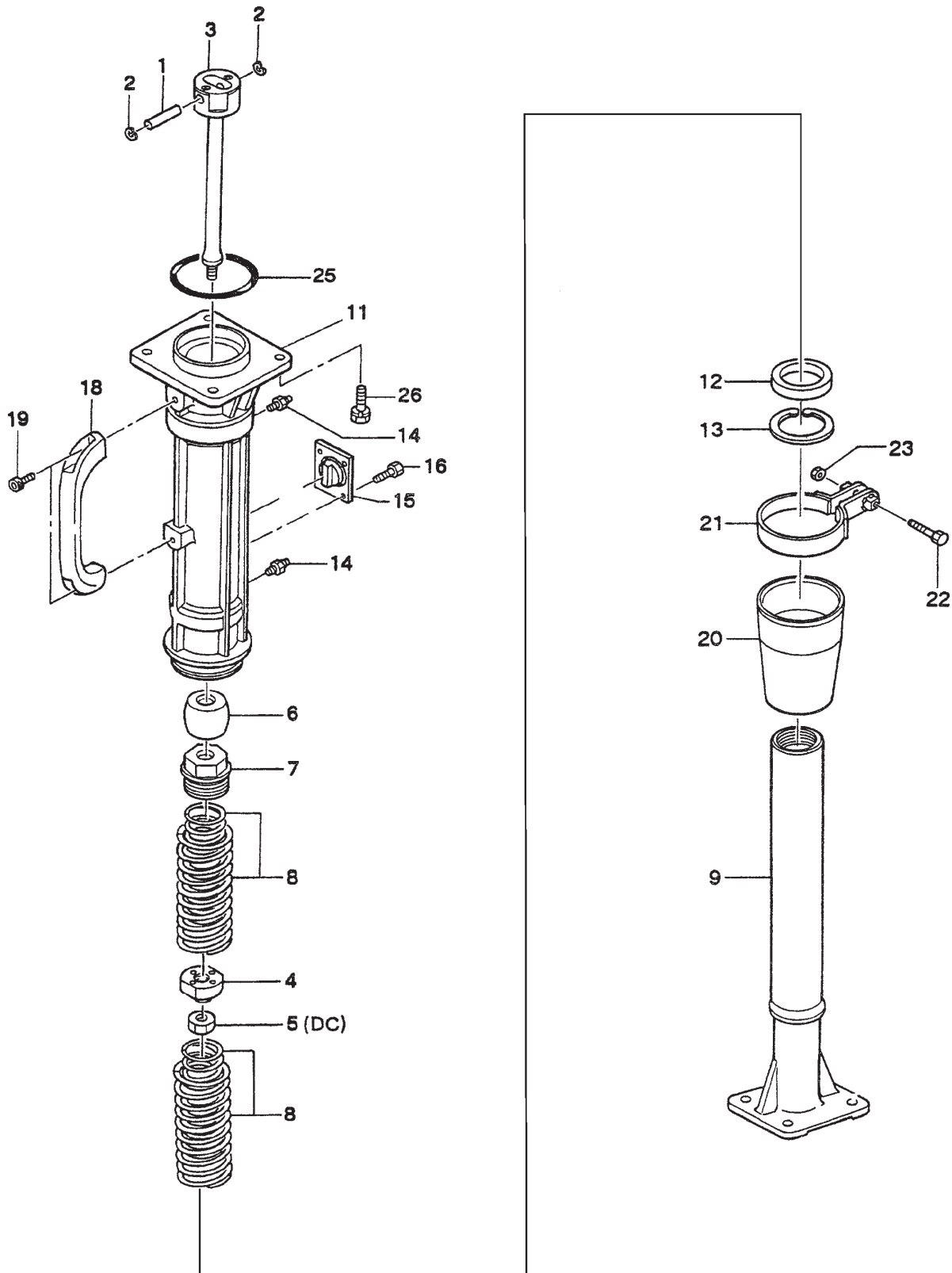
- △ AIR CLEANER ASSY., INCLUDES ITEMS WITHIN DASHED LINES EXCEPT FOR ITEMS 74 AND 75.

CRANKCASE AND ENGINE ASSY.

CONTINUED

| <u>NO</u> | <u>PART NO</u> | <u>PART NAME</u> | <u>QTY.</u> | <u>REMARKS</u> |
|-----------|----------------|------------------------------|-------------|--------------------|
| 41 | 0031108000 | WASHER | 4 | |
| 42 | 0310060020 | DOWEL PIN | 2 | |
| 63 | 959006120 | CLIP (TCP-10509B) | 1 | |
| 64 | 362341620 | OIL GAUGE PROTECTOR | 1 | |
| 65 | 362341630 | LINK PROTECTOR | 1 | |
| 66 | 002400820 | BOLT 8X20 W/FLAT/LOCK WASHER | 4 | |
| 67 | 2741600113 | STIFFENER | 1 | |
| 68 | 0011408250 | BOLT AND WASHER | 4 | |
| 69 | 0011408300 | BOLT AND WASHER ASSY. | 2 | |
| 71 | 362116871 | AIR CLEANER ASSY. | 1 | INCLUDES ITEMS W/# |
| 71-1# | 362030011 | COVER CP, AIR CLEANER | 1 | |
| 71-2# | 362030020 | PACKING, AIR CLEANER | 1 | |
| 71-3# | 362030030 | ELEMENT CP, AIR CLEANER | 1 | |
| 71-4# | 362030040 | BOLT CP, AIR CLEANER | 1 | |
| 72 | 353342400 | INTAKE PIPE | 1 | |
| 73 | 507010110 | CLAMP TC-200 | 2 | |
| 74 | 050300070 | O-RING (7) | 1 | |
| 75 | 031108160 | WASHER, FLAT M8 | 1 | |
| 81 | 306010020 | FRONT COVER | 1 | |
| 86 | 911210905 | ENGINE ASSY., EH09D | | |

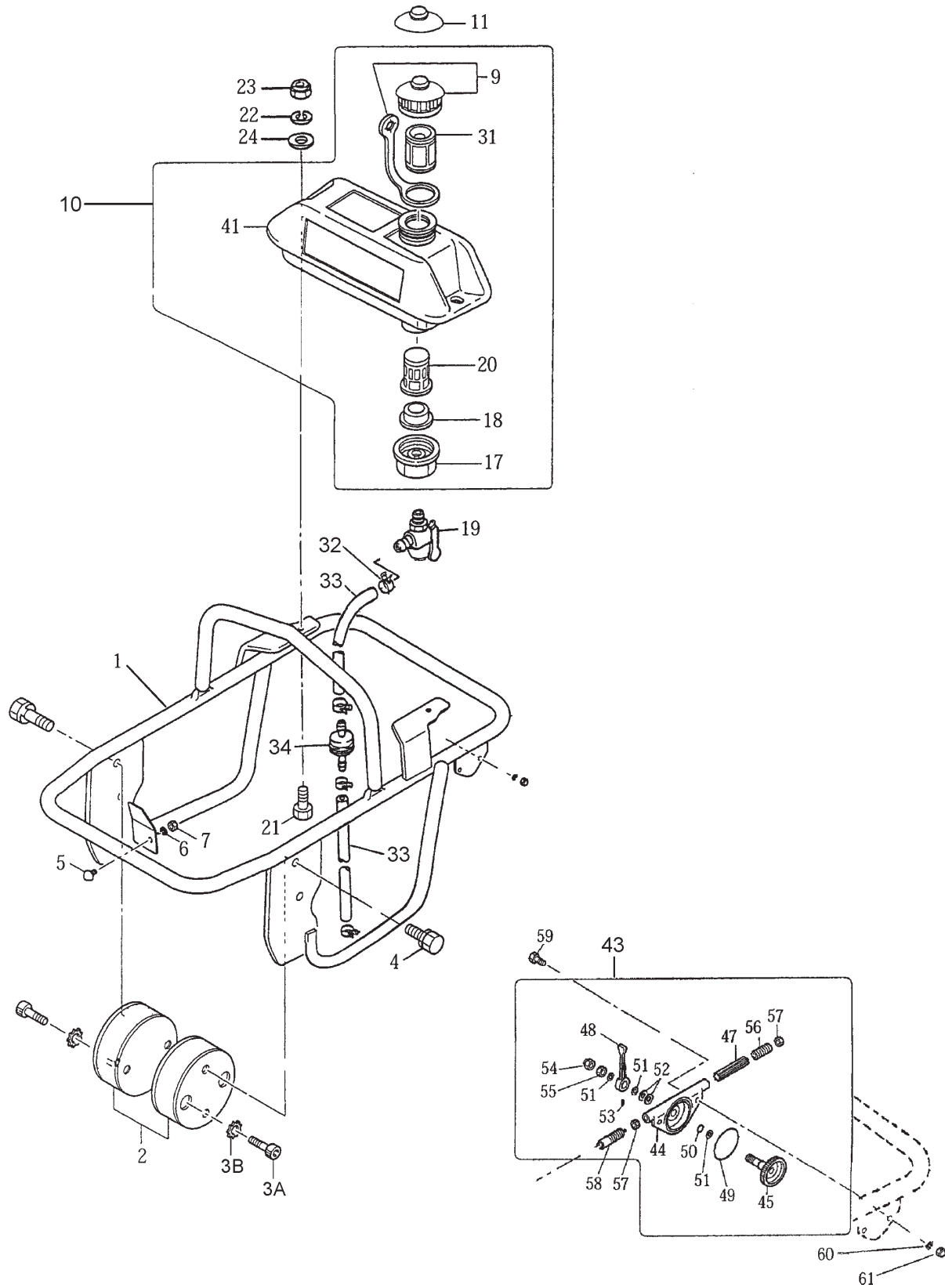
GUIDE CYLINDER ASSY.



GUIDE CYLINDER ASSY.

| <u>NO</u> | <u>PART NO</u> | <u>PART NAME</u> | <u>QTY.</u> | <u>REMARKS</u> |
|-----------|----------------|-------------------------|-------------|----------------|
| 1 | 305446380 | PISTON PIN | 1 | |
| 2 | 080100120 | STOP RING R-12 | 2 | |
| 3 | 305337980 | PISTON ROD,M14 | 1 | |
| 4 | 305451550 | PISTON END, M14 | 1 | |
| 6 | 305446400 | STOPPER, UPPER | 1 | |
| 7 | 305446410 | CYLINDER CAP | 1 | |
| 8 | 305446420 | MAIN SPRING | 2 | |
| 9 | 305212710 | SPRING CYLINDER | 1 | |
| 11 | 305112730 | GUIDE CYLINDER | 1 | |
| 12 | 065105010 | DUST SEAL DKI-5367811 | 1 | |
| 13 | 080510680 | STOP RING TH-R-68 | 1 | |
| 14 | 351010050 | GREASE FITTING A-MT6x1 | 2 | |
| 15 | 305446430 | STOPPER | 1 | |
| 16 | 001220816 | BOLT 8x15 H, SW | 4 | |
| 18 | 305446440 | GRIP | 1 | |
| 19 | 001520815 | SOCKET HEAD BOLT 8x15 T | 2 | |
| 20 | 305446450 | DUST SLEEVE | 1 | |
| 21 | 305446460 | SLEEVE BAND | 1 | |
| 22 | 011208030 | BOLT 8x30 | 1 | |
| 23 | 020308060 | NUT M8 | 1 | |
| 25 | 050100800 | O-RING G-80 | 1 | |
| 26 | 002211025 | BOLT 10x25 H, SW | 4 | |

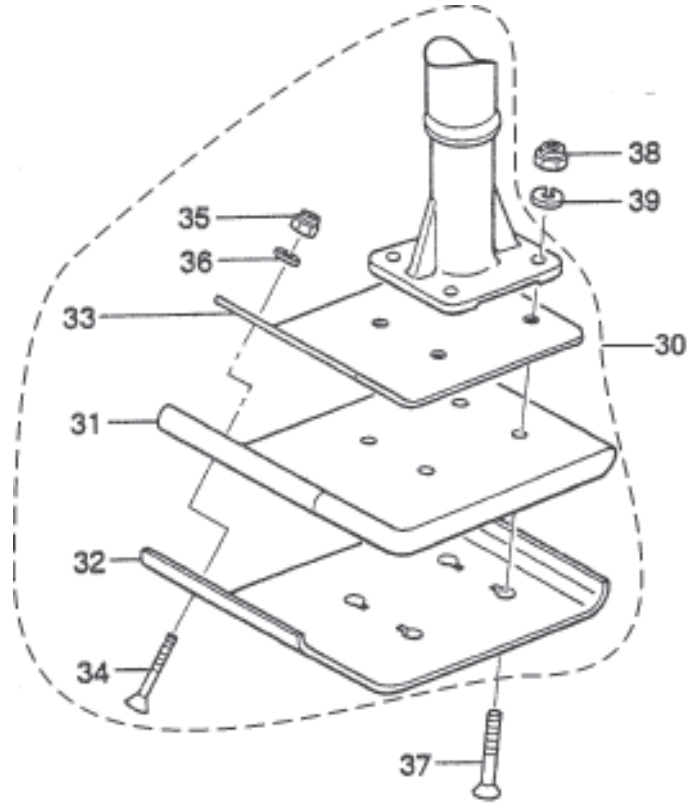
TANK AND HANDLE ASSY.



TANK AND HANDLE ASSY.

| <u>NO</u> | <u>PART NO</u> | <u>PART NAME</u> | <u>QTY.</u> | <u>REMARKS</u> |
|-----------|------------------|--------------------------------|-------------|----------------------|
| 1 | 306117960 | HANDLE | 1 | |
| 2 | 351319900 | SHOCK ABSORBER | 2 | |
| 3A | 009110007 | SOCKET HEAD BOLT 10x20 T | 4 | |
| 3B | 033121009 | TOOTHED LOCKWASHER B M10 | 4 | |
| 4 | 002211020 | BOLT 10x20 H, SW | 4 | |
| 5 | 939010210 | STOPPER RUBBER EH1002 | 1 | |
| 6 | 030208200 | WASHER, LOCK M8 | 1 | |
| 7 | 020308060 | NUT M8 | 1 | |
| 9# | 361910021 | TANK CAP CP (ORANGE) | 1 | |
| 10 | 305910032 | FUEL TANK ASSY. | 1 | INCLUDES ITEMS W/ # |
| 11 | 361455740 | SUB CAP | 1 | |
| 17# | 351437785 | HOLDER, COCK | 1 | |
| 18# | 954406020 | PACKING, FUEL TANK | 1 | |
| 19 | 954300720 | FUEL COCK ASSY./CVL-08 | 1 | |
| 20# | 954406010 | STRAINER (#110) | 1 | |
| 21 | 001220830 | BOLT 8x30 T | 2 | |
| 22 | 030208200 | WASHER, LOCK M8 | 2 | |
| 23 | 022710809 | NYLON NUT M8 | 2 | |
| 24 | 952401450 | WASHER 8.5x22x3 | 2 | |
| 31# | 954404890 | FILTER, TANK | 1 | |
| 32 | 954403030 | HOSE BAND (8) | 4 | S/N S-3129 AND BELOW |
| 32 | 0561080020 | HOSE CLAMP | 4 | S/N S-3130 AND ABOVE |
| 33 | 351436350 | FUEL HOSE, L=150 | 2 | S/N S-3129 AND BELOW |
| 33 | 0851041790 | FUEL HOSE FOR EVP, L=150 | 2 | S/N S-3130 AND ABOVE |
| 34 | 301419750 | FUEL FILTER CP | 1 | |
| 41# | 362116890 | F. TANK 2L (GRAY) | 1 | |
| 43 | 362910060 | THROTTLE LEVER ASSY. | 1 | INCLUDES ITEMS W/ * |
| 44* | 362341550 | THROTTLE BODY | 1 | |
| 45* | 362910090 | THROTTLE, GEAR CP. W/ BOLT | 1 | |
| 47* | 362455620 | SLIDER | 1 | |
| 48* | 362455630 | THROTTLE LEVER | 1 | |
| 49* | 050100450 | O-RING G-45 | 1 | |
| 50* | 050200100 | O-RING P-10 | 1 | |
| 51* | 031110160 | WASHER, FLAT M10 | 3 | |
| 52* | 033910070 | CONICAL SPRING WASHER | 2 | |
| 53* | 096206006 | SOCKET HEAD SCREW 6 x 6 | 1 | |
| 54 | 022131008 | CAP NUT M10 | 1 | |
| 55 | 020410060 | NUT M10, H=6 | 1 | |
| 56* | 096208020 | SOCKET HEAD SCREW 8 x 20 | 1 | |
| 57* | 020408050 | NUT M8, H=5 | 2 | |
| 58* | 956100040 | THROTTLE WIRE 620-710 | 1 | |
| 59 | 001220620 | BOLT 6X20 T | 2 | |
| 60 | 030206150 | WASHER, LOCK | 2 | |
| 61 | 022130605 | CAP NUT M6 | 2 | |

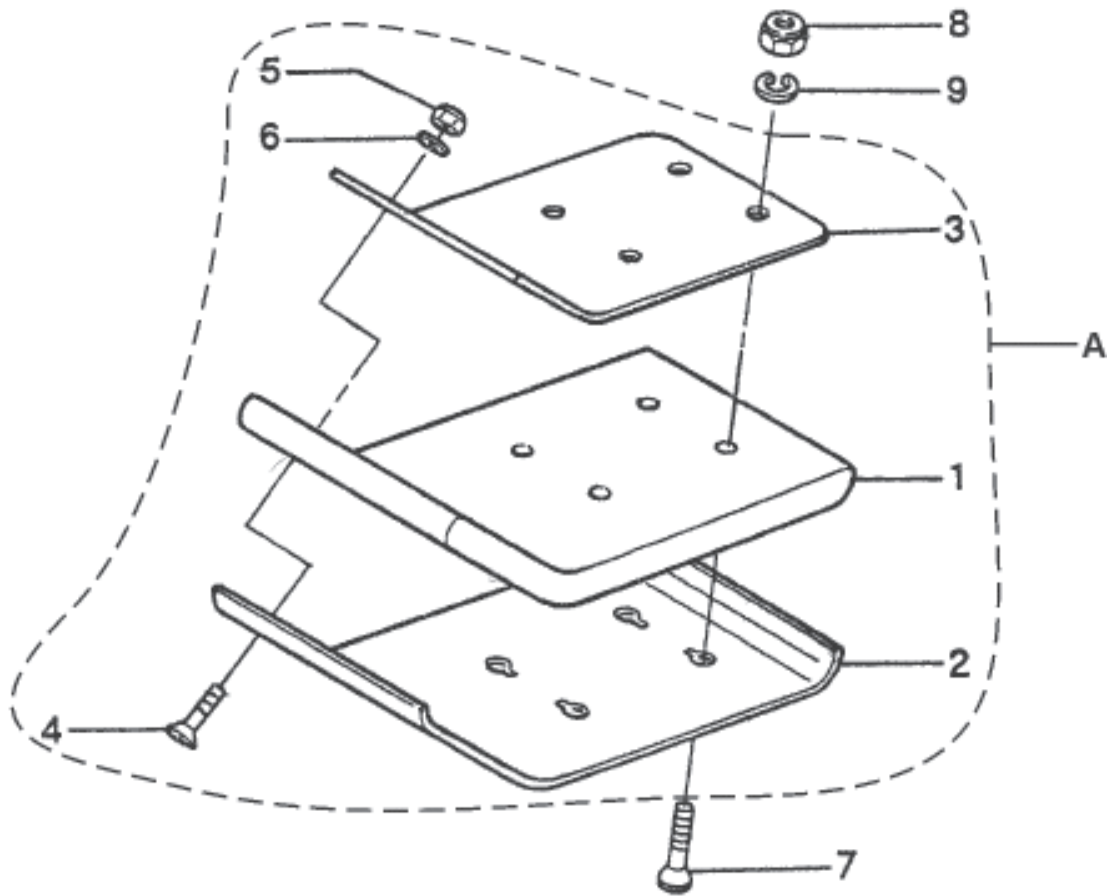
FOOT ASSY. (OPTION)



FOOT ASSY. (OPTION)

| <u>NO</u> | <u>PART NO</u> | <u>PART NAME</u> | <u>QTY.</u> | <u>REMARKS</u> |
|-----------|----------------|------------------------|-------------|--------------------|
| 30 | 305910010 | FOOT ASSY. 150B | 1 | INCLUDES ITEMS W/* |
| 31* | 305333120 | FOOT 150B | 1 | |
| 32* | 305333130 | METAL SHEET 150B | 1 | |
| 33* | 305446470 | FOOT COVER | 1 | |
| 34* | 015110055 | SUNK HEAD BOLT 10x50 H | 2 | |
| 35* | 022711012 | NYLON NUT M10 | 2 | |
| 36* | 030210250 | WASHER, LOCK M10 | 2 | |
| 37 | 015112075 | SUNK HEAD BOLT 12x60 H | 4 | |
| 38 | 022711214 | NYLON NUT M12 | 4 | |
| 39 | 030212300 | WASHER, LOCK M12 | 4 | |

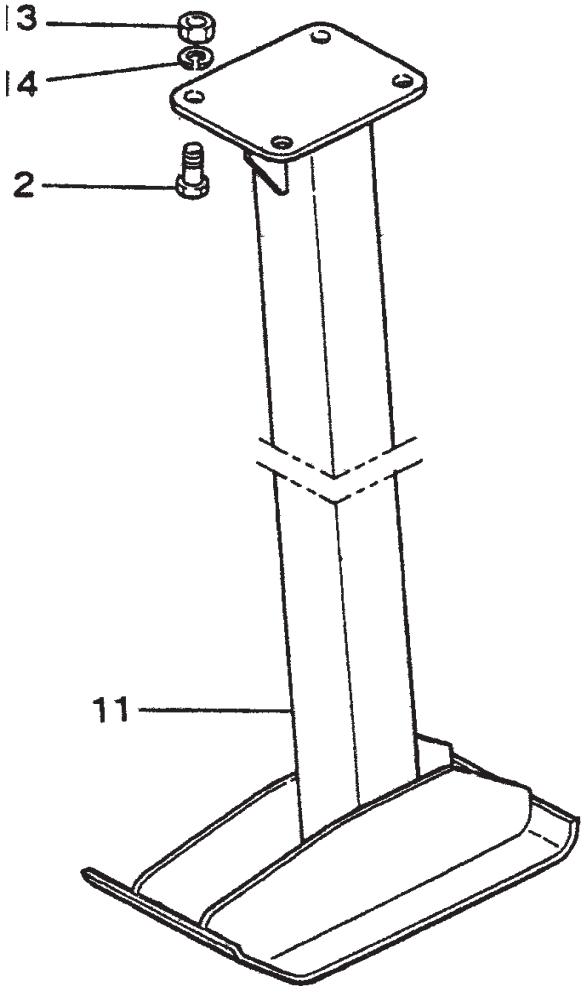
NARROW FOOT ASSY. (OPTION)



NARROW FOOT ASSY. (OPTION)

| <u>NO</u> | <u>PART NO</u> | <u>PART NAME</u> | <u>QTY.</u> | <u>REMARKS</u> |
|-----------|----------------|------------------------|-------------|--------------------|
| A | 305910020 | FOOT ASSY. 200B | 1 | INCLUDES ITEMS W/* |
| A | 305910040 | FOOT ASSY. 100B | 1 | INCLUDES ITEMS W/# |
| 1* | 305333140 | FOOT 200B | 1 | 200B |
| 1# | 305334930 | FOOT 100B | 1 | 100B |
| 2* | 305333150 | METAL SHEET 200B | 1 | 200B |
| 2# | 305334940 | METAL SHEET 100B | 1 | 100B |
| 3* | 305446470 | FOOT COVER | 1 | 200B |
| 3# | 305447810 | FOOT COVER 96B | 1 | 100B |
| 4*# | 001611050 | SUNK HEAD BOLT 10x50 H | 2 | |
| 5*# | 022711012 | NYLON NUT M10 | 2 | |
| 6*# | 030210250 | WASHER, LOCKM10 | 2 | |
| 7 | 001611252 | SUNK HEAD BOLT 12x60 H | 4 | |
| 8 | 022711214 | NYLON NUT M12 | 4 | |
| 9 | 030212300 | WASHER, LOCK M10 | 4 | |

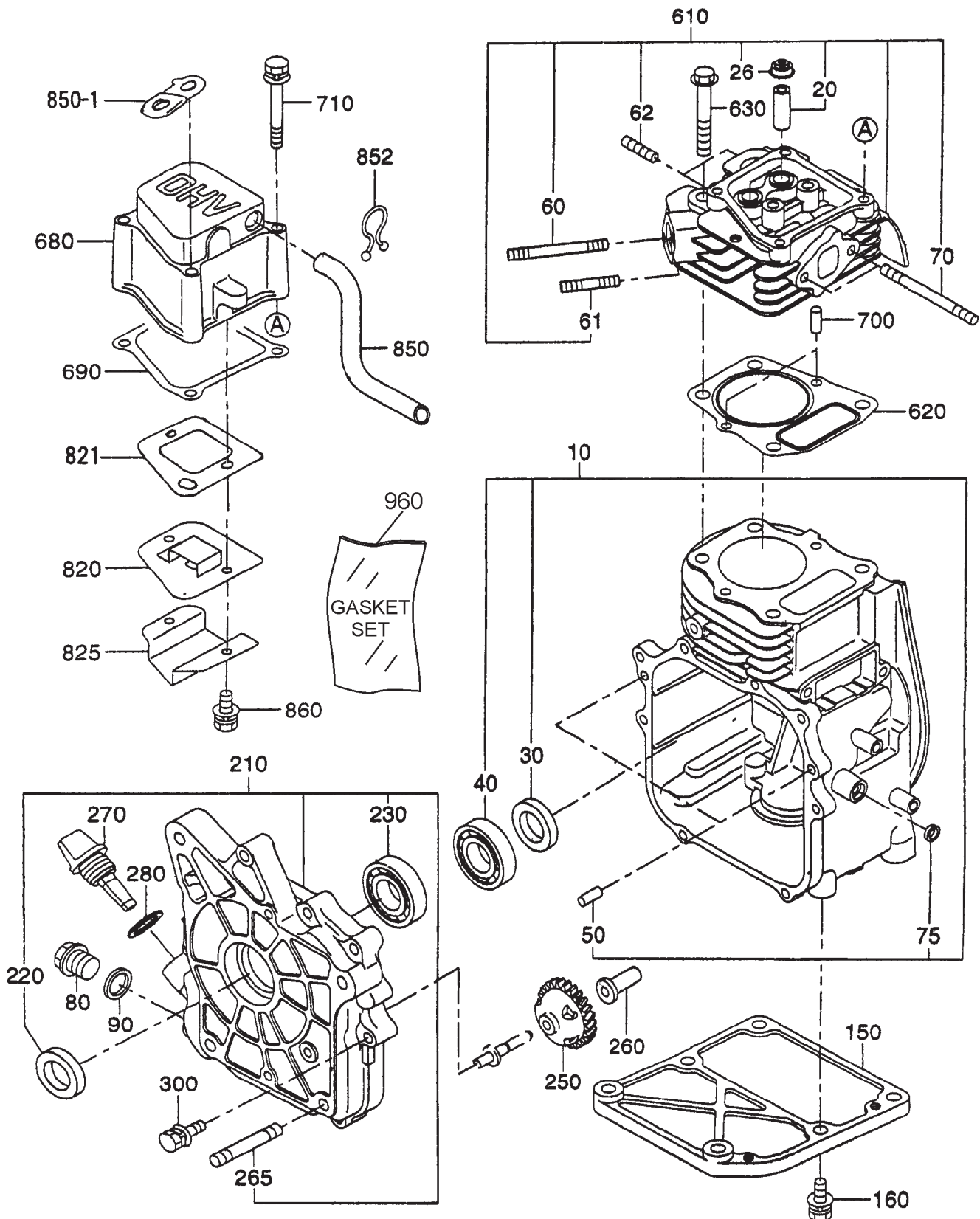
TRENCH SHOE ASSY.



TRENCH SHOE ASSY.

| <u>NO</u> | <u>PART NO</u> | <u>PART NAME</u> | <u>QTY.</u> | <u>REMARKS</u> |
|-----------|----------------|-----------------------|-------------|----------------|
| 11 | 305333160 | TRENCH SHOE 500H-120B | 1 | |
| 11 | 305333170 | TRENCH SHOE 800H-120B | 1 | |
| 11 | 305334390 | TRENCH SHOE 305H-100B | 1 | |
| 12 | 001221235 | BOLT 12x35 T | 4 | |
| 13 | 020312100 | NUT M12 | 4 | |
| 14 | 030212300 | WASHER, LOCK M12 | 4 | |

ROBIN EH-090D ENGINE — CRANKCASE ASSY.



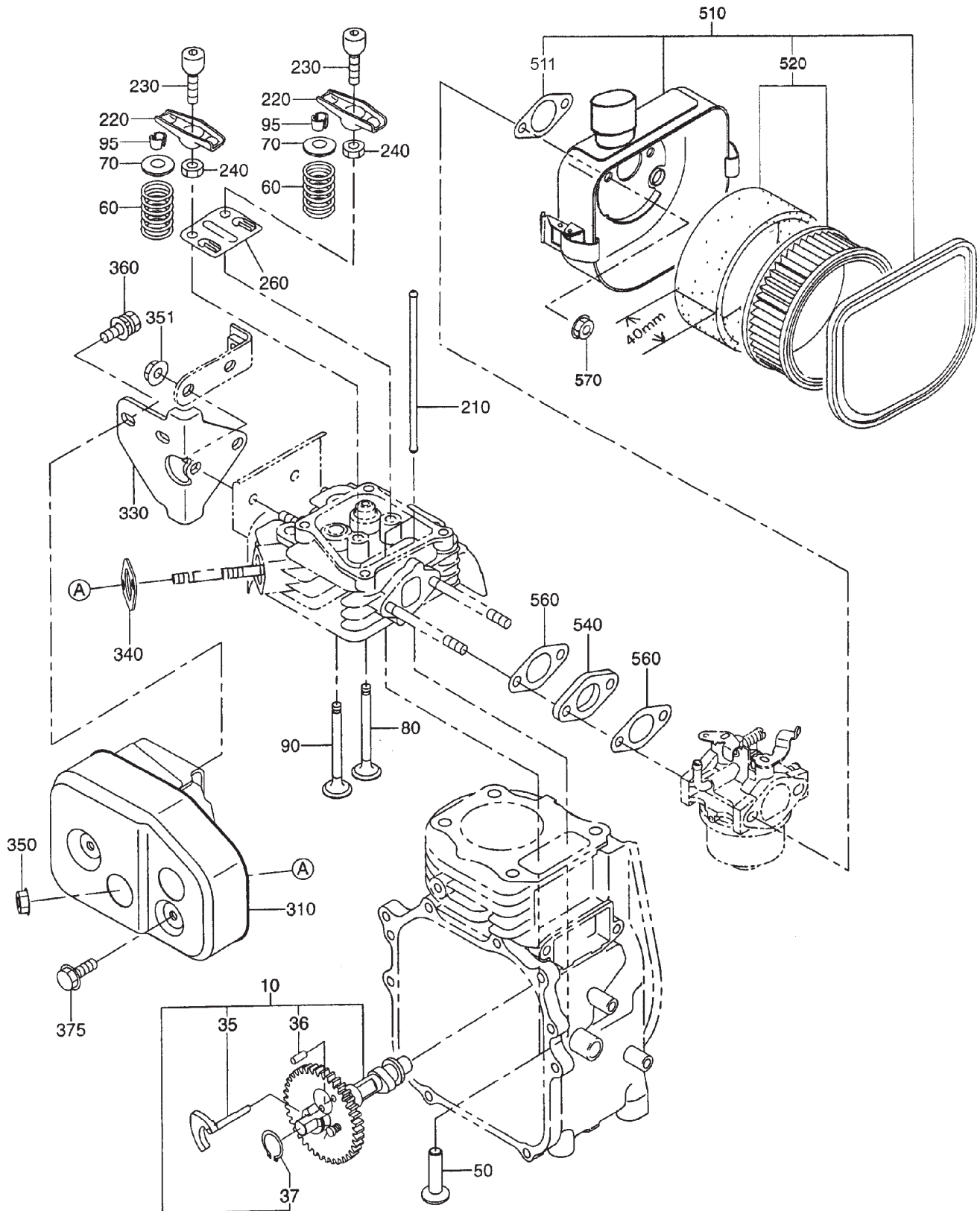
ROBIN EH-090D ENGINE — CRANKCASE ASSY.

| <u>NO</u> | <u>PART NO</u> | <u>PART NAME</u> | <u>QTY.</u> | <u>REMARKS</u> |
|-----------|----------------|--------------------------|-------------|--------------------|
| 10 | 2741010121 | CRANKCASE CP | 1 | INCLUDES ITEMS W/# |
| 20% | 2371420203 | VALVE GUIDE | 2 | |
| 26 | 2371600801 | STEM SEAL CP | 1 | |
| 30# | 0440200070 | OIL SEAL 20X32X6 | 1 | |
| 40# | 0600200140 | BALL BEARING | 1 | |
| 50# | 0310060020 | DOWEL PIN | 2 | |
| 60% | 0013906600 | STUD | 1 | |
| 61% | 0105060200 | STUD | 1 | |
| 62% | 0105060170 | STUD | 2 | |
| 70% | 0105060160 | STUD | 2 | |
| 75# | 0440060010 | OIL SEAL 6X10X2.5 | 1 | |
| 80 | 0401140030 | PLUG | 1 | |
| 90 | 0211140020 | GASKET | 1 | |
| 150 | 2741600113 | STIFFENER | 1 | |
| 160 | 0011408250 | BOLT & WASHER | 2 | |
| 210 | 2741100131 | MAIN BEARING COVER | 1 | INCLUDES ITEMS W/* |
| 220* | 0440200110 | OIL SEAL 20X32X6 | 1 | |
| 230* | 0600200140 | BALL BEARING | 1 | |
| 250 | 2304500301 | GOVERNOR GEAR CP | 1 | |
| 260 | 2054190103 | GOVERNOR SLEEVE | 1 | |
| 265 | 0013908500 | STUD | 4 | |
| 270 | 2306360113 | OIL GAUGE | 1 | |
| 280 | 0213160020 | GASKET | 1 | |
| 300 | 0130060200 | BOLT & WASHER | 9 | |
| 610 | 2741300131 | CYLINDER HEAD CP | 1 | INCLUDES ITEMS W/% |
| 620 | 2741550103 | GASKET, HEAD | 1 | |
| 630 | 0110080210 | FLANGE BOLT | 4 | |
| 680 | 2741550223 | ROCKER COVER | 1 | |
| 690 | 2741600403 | GASKET (ROCKET COVER) | 1 | |
| 700 | 0310060020 | DOWEL PIN | 2 | |
| 710 | 0011406600 | BOLT & WASHER ASSY. | 4 | |
| 727 | 0566000250 | CLAMP | 1 | |
| 820 | 2741440101 | BREATHER PLATE CP | 1 | |
| 821 | 2741620103 | GASKET/BREATHER PLATE | 1 | |
| 825 | 2741440503 | OIL SHELTER PLATE | 1 | |
| 850 | 2741610203 | BREATHER PIPE | 1 | |
| 850-1 | 0566000331 | CLAMP, BREATHER, PIPE | 1 | |
| 852 | 0569000010 | HOSE CLIP | 1 | |
| 860 | 0011305100 | BOLT & WASHER ASSY. | 2 | |
| 960 | 2749900107 | GASKET SET | 1 | |

ROBIN EH-090D ENGINE — CRANKSHAFT AND PISTON ASSY.

| <u>NO</u> | <u>PART NO</u> | <u>PART NAME</u> | <u>QTY.</u> | <u>REMARKS</u> |
|-----------|----------------|------------------------|-------------|---------------------|
| 10 | 2742010141 | CRANKSHAFT CP | 1 | INCLUDES ITEMS W/# |
| 40 | 0230200100 | SPACER T=0.8 | 1 | |
| 40 | 0230200110 | SPACER T=1.0 | 1 | |
| 40 | 0230200120 | SPACER T=1.2 | 1 | |
| 50 | 0021812000 | NUT | 1 | |
| 60 | 0032012000 | SPRING WASHER | 1 | REPLACES 0032012000 |
| 70 | 0053203101 | WOODRUFF KEY | 1 | |
| 75# | 0053204201 | WOODRUFF KEY | 1 | |
| 170 | 0173120010 | LOCK NUT | 1 | |
| 310 | 2302250120 | CONNECTING ROD ASSY. | 1 | |
| 320 | 2302300123 | CONNECTING ROD BOLT | 2 | |
| 350 | 2302330103 | PISTON PIN | 1 | |
| 360 | 2742340103 | PISTON | 1 | |
| 360 | 2742340203 | PISTON 0.25MM | 1 | |
| 360 | 2742340303 | PISTON 0.50MM | 1 | |
| 370 | 2742350107 | PISTON RING SET | 1 | |
| 370 | 2742350207 | PISTON RING SET 0.25MM | 1 | |
| 370 | 2742350307 | PISTON RING SET 0.50MM | 1 | |
| 380 | 0565110010 | CLIP | 2 | |

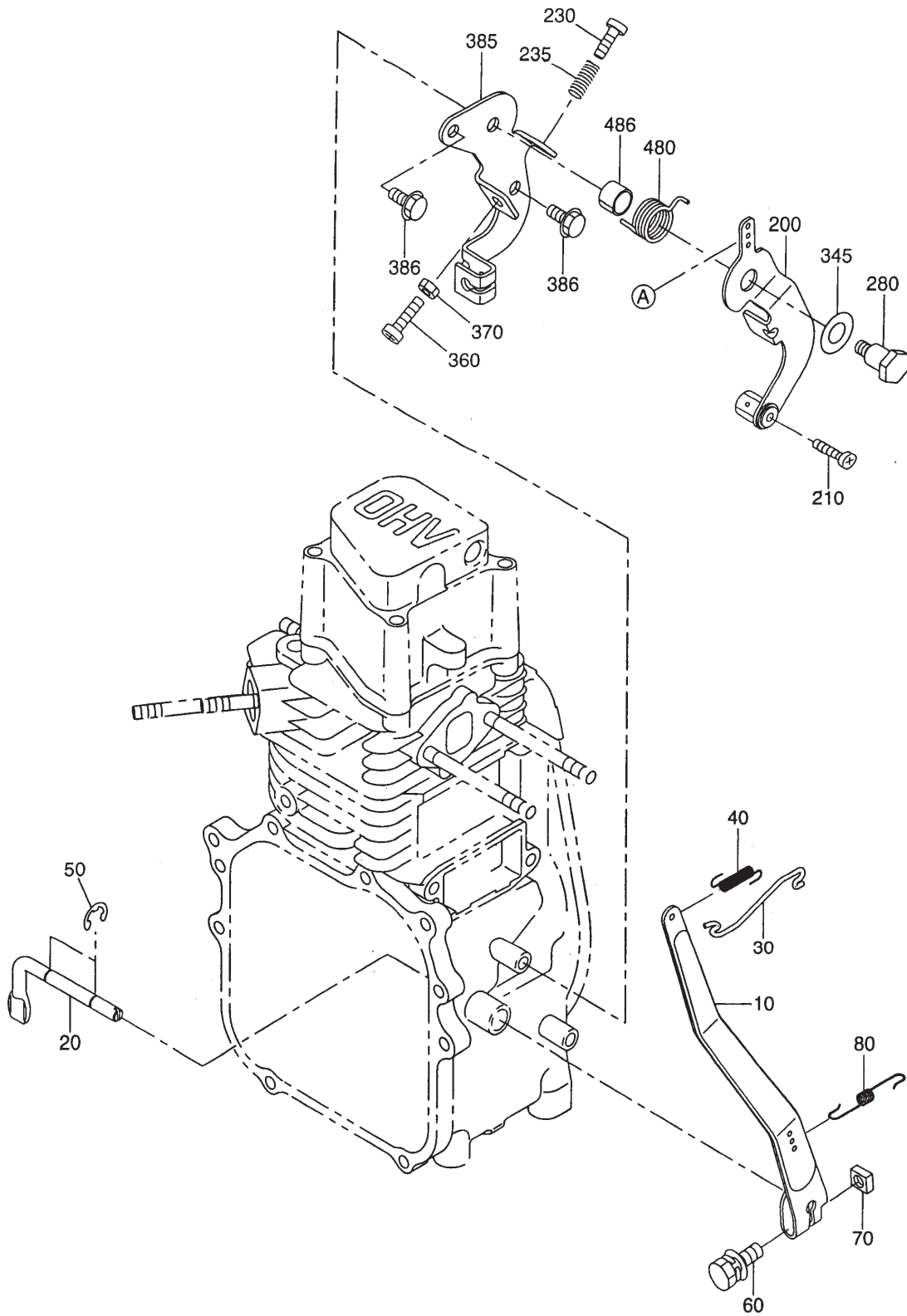
ROBIN EH-090D ENGINE — INTAKE AND EXHAUST ASSY.



ROBIN EH-090D ENGINE — INTAKE AND EXHAUST ASSY.

| <u>NO</u> | <u>PART NO</u> | <u>PART NAME</u> | <u>QTY.</u> | <u>REMARKS</u> |
|-----------|----------------|----------------------------|-------------|---------------------|
| 10 | 2743170101 | CAMSHAFT CP | 1 | INCLUDES ITEMS W/% |
| 34 | 2273860123 | PIN (SPRING) | 1 | |
| 35% | 2743640103 | RELEASE LEVER | 1 | |
| 36% | 0051904100 | SPRING PIN | 1 | |
| 37% | 0031517000 | SNAP RING | 1 | |
| 38 | 2743870103 | RETURN SPRING | 1 | |
| 50 | 2743330103 | TAPPET | 2 | |
| 60 | 2743360103 | VALVE SPRING | 2 | |
| 70 | 2743370103 | SPRING RETAINER | 2 | |
| 80 | 2743340103 | INTAKE VALVE | 1 | |
| 90 | 2743350103 | EXHAUST VALVE | 1 | |
| 95 | 13210KA031 | COLLET VALVE | 4 | |
| 210 | 2743530103 | PUSH ROD | 2 | |
| 220 | 2743600103 | ROCKER ARM | 2 | |
| 230 | 2693580103 | BOLT (PIVOT) | 2 | |
| 240 | 0170060090 | NUT | 2 | |
| 260 | 2743650103 | GUIDE PLATE | 1 | |
| 310 | 2743010211 | MUFFLER CP | 1 | |
| 330 | 2743700111 | BRACKET CP (MUFFLER) | 1 | |
| 340 | 2743520101 | GASKET CP (EXHAUST) | 1 | |
| 350 | 0176060020 | SELF LOCK NUT | 2 | |
| 351 | 0023806000 | FLANGE NUT | 2 | REPLACES 0023806000 |
| 360 | 0110060010 | BOLT AND WASHER ASSY. | 2 | REPLACES 0011406120 |
| 375 | 0011306120 | FLANGE BOLT | 2 | REPLACES 0110060010 |
| 510 | 2743260400 | AIR CLEANER ASSY. | 1 | INCLUDES ITEMS W/* |
| 510-2* | 2303262008 | GASKET | 1 | |
| 520* | 2743260307 | ELEMENT SET | 1 | |
| 540 | 2303290103 | INSULATOR | 1 | |
| 550 | 2303590103 | GASKET (INSULATOR) | 1 | |
| 560 | 2303590203 | GASKET 2 (INSULATOR) | 2 | |
| 570 | 0176060020 | SELF LOCK NUT | 2 | |

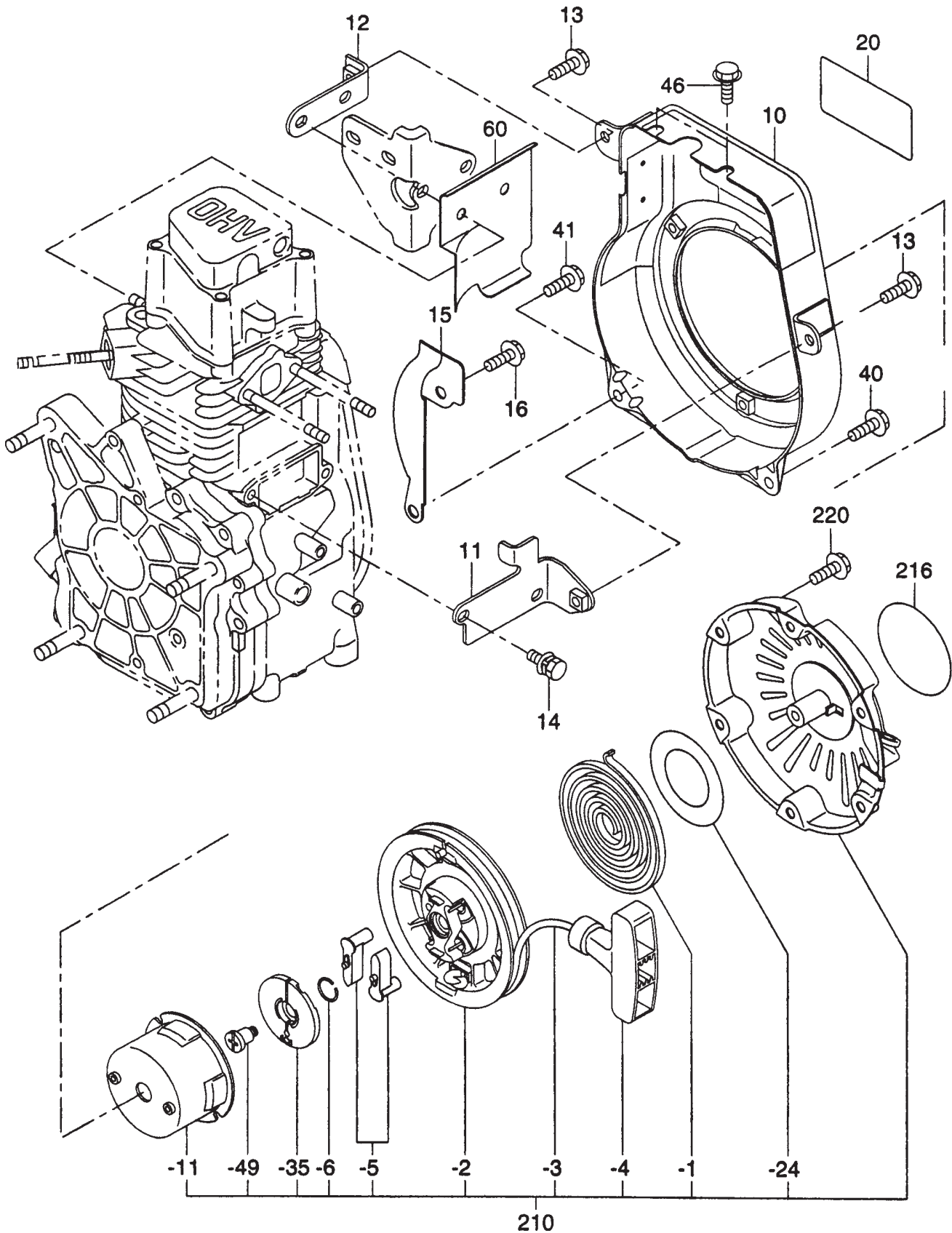
ROBIN EH-090D ENGINE — GOVERNOR ASSY.



ROBIN EH-090D ENGINE — GOVERNOR ASSY.

| <u>NO</u> | <u>PART NO</u> | <u>PART NAME</u> | <u>QTY.</u> | <u>REMARKS</u> |
|-----------|----------------|-----------------------|-------------|---------------------|
| 10 | 2744230101 | GOVERNOR LEVER | 1 | |
| 20 | 2304220103 | GOVERNOR SHAFT | 1 | |
| 30 | 2744270113 | GOVERNOR ROD | 1 | |
| 40 | 1064280113 | ROD SPRING | 1 | |
| 50 | 0031305000 | CLIP | 2 | |
| 60 | 0011406250 | BOLT AND WASHER ASSY. | 1 | |
| 70 | 0186060020 | NUT | 1 | |
| 80 | 2744250103 | GOVERNOR SPRING | 1 | |
| 200 | 2304330210 | SPEED CONTROL ASSY. | 1 | |
| 210 | 0043104140 | SCREW (PAN HEAD) | 1 | |
| 230 | 0140040070 | SCREW | 1 | |
| 235 | 2684500103 | CONTROL SPRING | 1 | |
| 280 | 2264310301 | LINK PIVOT CP | 1 | |
| 345 | 0217100020 | FRICTION WASHER | 1 | |
| 360 | 0043106300 | SCREW | 1 | |
| 370 | 0022706000 | NUT | 1 | REPLACES 0022706000 |
| 385 | 2744510101 | BASE PLATE CP | 1 | |
| 386 | 0110060050 | FLANGE BOLT | 2 | REPLACES 0110060010 |
| 480 | 2264500313 | RETURN SPRING | 1 | |
| 486 | 0230100040 | SPACER | 1 | |

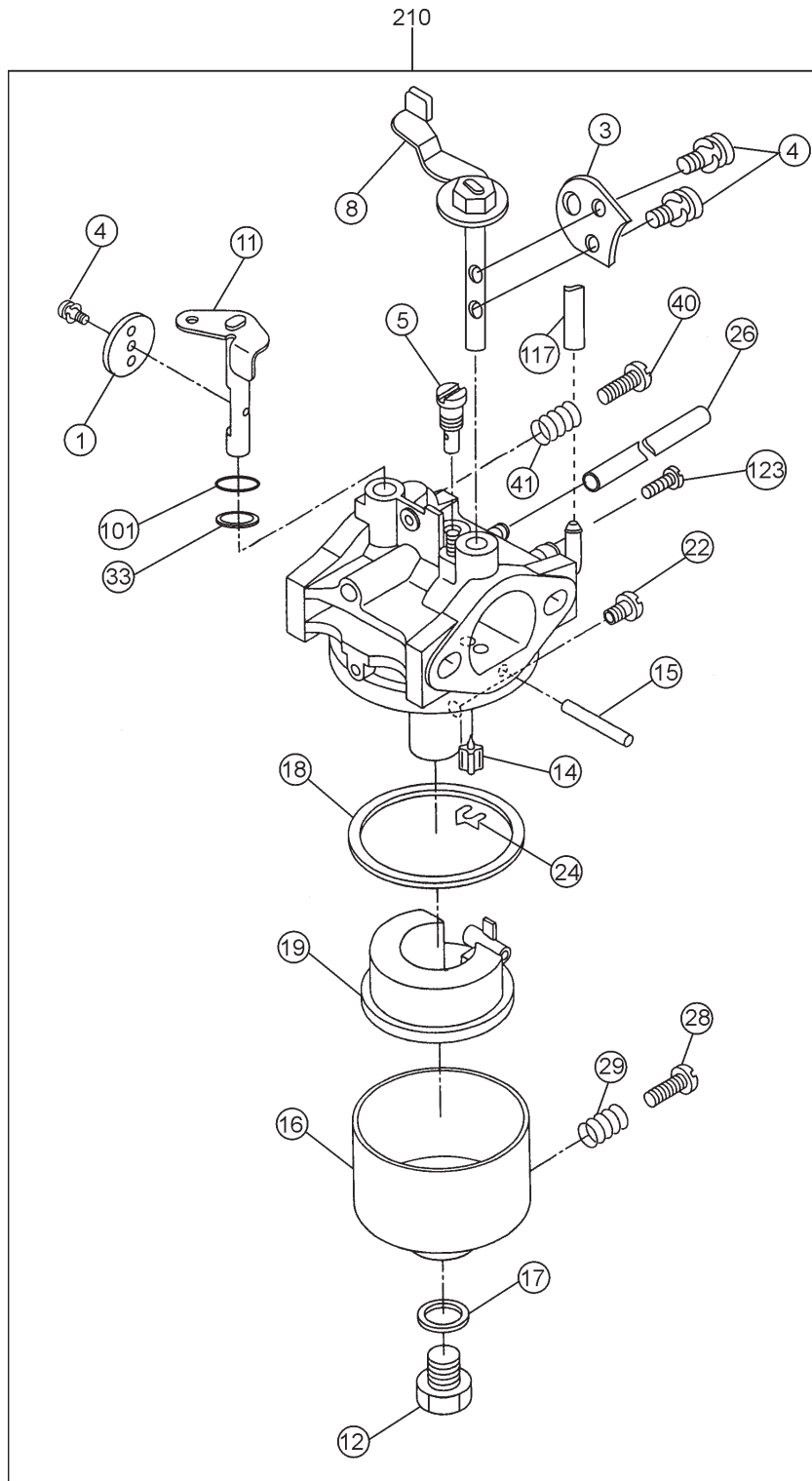
ROBIN EH-090D ENGINE — RECOIL STARTER ASSY.



ROBIN EH-090D ENGINE — RECOIL STARTER ASSY.

| <u>NO</u> | <u>PART NO</u> | <u>PART NAME</u> | <u>QTY.</u> | <u>REMARKS</u> |
|-----------|----------------|---------------------------|-------------|---------------------|
| 10 | 2745120211 | BLOWER HOUSING CP | 1 | |
| 11 | 2745510121 | BLOWER H. BKT. 1 CP | 1 | |
| 12 | 2745520101 | BLOWER H. BKT. 2 CP | 1 | |
| 13 | 0110060020 | FLANGE BOLT | 2 | |
| 14 | 0011606140 | BOLT AND WASHER ASSY. | 2 | |
| 15 | 2745500101 | BLOWER GUIDE CP | 1 | |
| 16 | 0110060050 | FLANGE BOLT | 1 | REPLACES 0110060010 |
| 20 | 2749170103 | LABEL (TRADE MARK) | 1 | |
| 40 | 0110060050 | FLANGE BOLT | 1 | REPLACES 0110060010 |
| 41 | 0110060020 | FLANGE BOLT | 1 | |
| 46 | 0110060020 | FLANGE BOLT | 2 | |
| 60 | 2745260103 | CYLINDER BAFFLE | 1 | |
| 210 | 2745020120 | RECOIL STARTER ASSY. | 1 | INCLUDES ITEM W/* |
| 210-1* | 2745011508 | SPIRAL SPRING | 1 | |
| 210-2* | 2745012018 | REEL | 1 | |
| 210-3* | 2745011108 | STARTER ROPE | 1 | |
| 210-4* | 2615010008 | STARTER KNOB | 1 | |
| 210-5* | 2705012508 | RATCHET | 2 | |
| 210-6* | 2275013108 | FRICTION SPRING | 1 | |
| 210-11* | 2745014508 | STARTING PULLEY | 1 | |
| 210-24* | 1315015008 | SLIDE PLATE | 1 | |
| 210-35* | 2705026108 | RATCHET GUIDE | 1 | |
| 210-49* | 2275015208 | SET SCREW | 1 | |
| 216 | 2069170103 | LABEL (TRADE MARK) | 1 | |
| 220 | 0110060020 | FLANGE BOLT | 3 | |

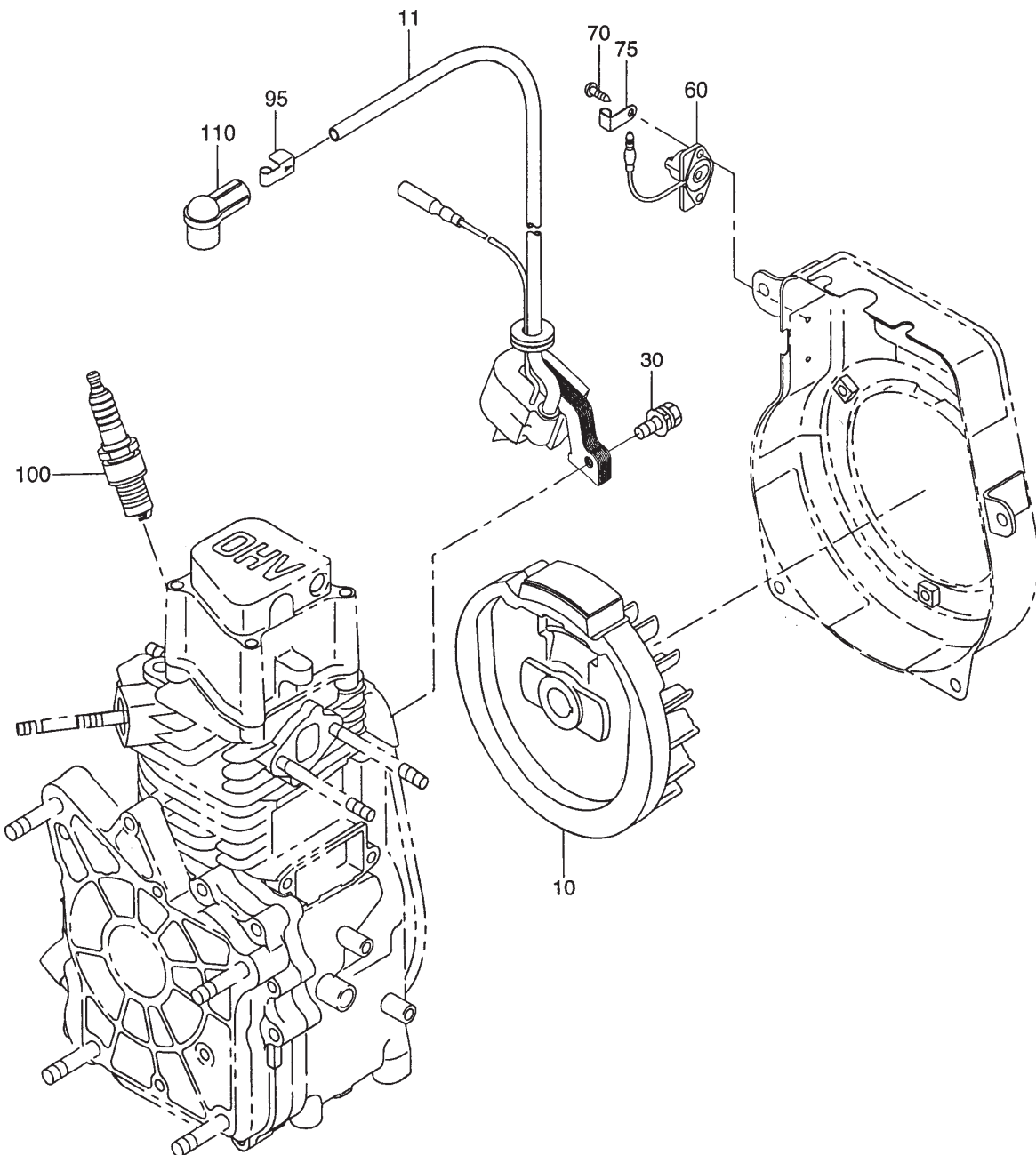
ROBIN EH-090D ENGINE — CARBURETOR ASSY.



ROBIN EH-090D ENGINE — CARBURETOR ASSY.

| <u>NO</u> | <u>PART NO</u> | <u>PART NAME</u> | <u>QTY.</u> | <u>REMARKS</u> |
|-----------|----------------|------------------------|-------------|--------------------|
| 210 | 2746230100 | CARBURETOR ASSY. | 1 | INCLUDES ITEMS W/* |
| -1* | 2746253508 | THROTTLE VALVE | 1 | |
| -3* | 2306252508 | CHOKE VALVE | 1 | |
| -4* | 2376245108 | SCREW | 3 | |
| -5* | 2346242108 | PILOT JET | 1 | |
| -8* | 2746252008 | SHAFT ASSY. (CHOKE) | 1 | |
| -11* | 2746253008 | SHAFT ASSY. (THROTTLE) | 1 | |
| -12* | 2246254308 | BOLT | 1 | |
| -14* | 2268250208 | NEEDLE VALVE ASSY. | 1 | |
| -15* | 2146251508 | PIN | 1 | |
| -16* | 2306255308 | FLOAT CHAMBER BODY | 1 | |
| -17* | 2078234508 | INSERT WASHER | 1 | |
| -18* | 2306254008 | PACKING | 1 | |
| -19* | 2306250608 | FLOAT ASSY. | 1 | |
| -22* | 2746240008 | MAIN JET | 1 | |
| -24* | 2266270118 | CLIP | 1 | |
| -26* | 2746235108 | HOSE | 1 | |
| -28* | 2246245008 | SCREW | 1 | |
| -29* | 2106231808 | SPRING | 1 | |
| -33* | 2306258108 | SEAL | 1 | |
| -40* | 1066239308 | SCREW | 1 | |
| -41* | 2066244608 | SPRING | 1 | |
| -101* | 2306258208 | PACKING | 1 | |
| -117* | 2746235008 | HOSE | 1 | |
| -123* | 2276240408 | MAIN JET | 1 | |

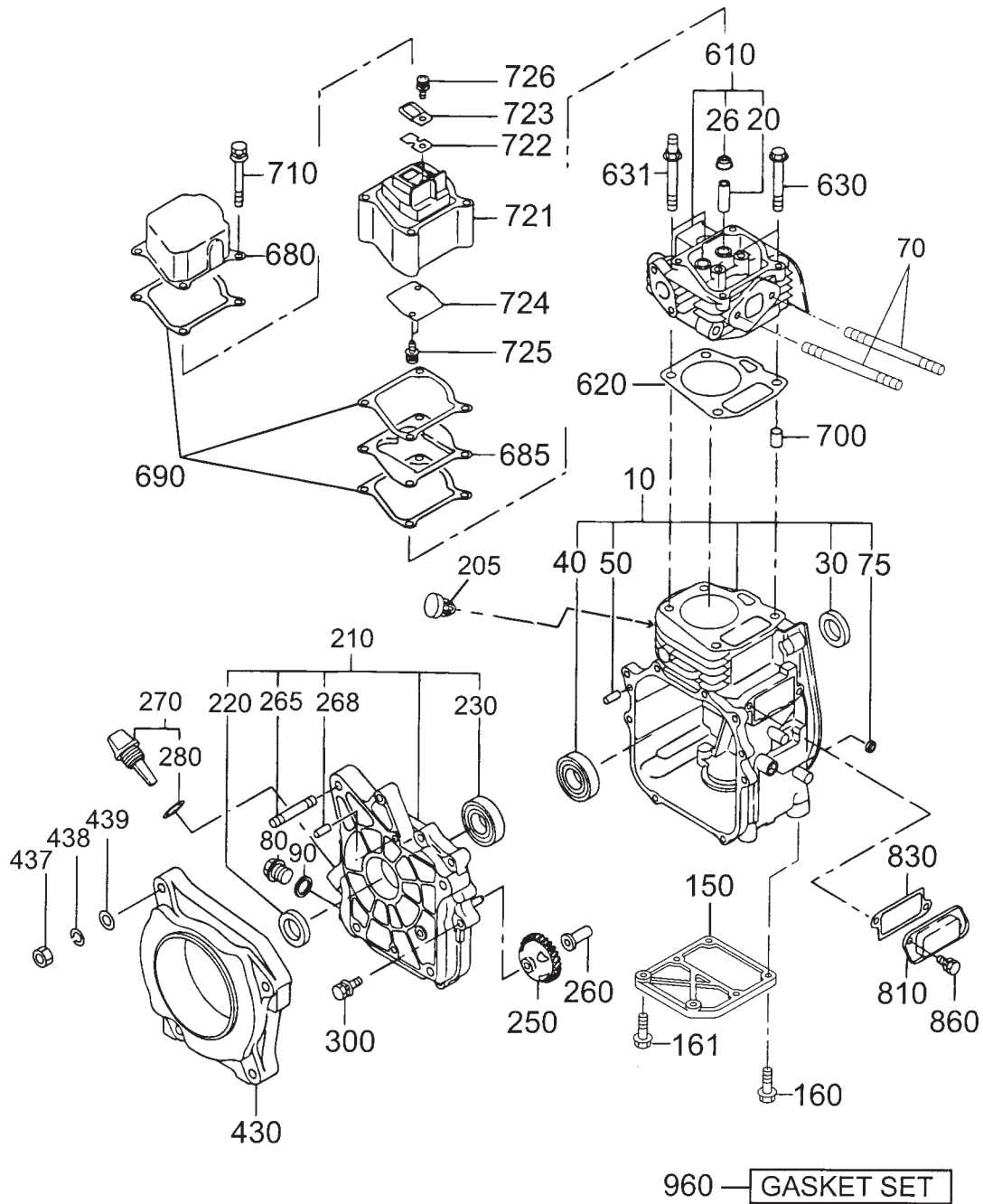
ROBIN EH-090D ENGINE — ELECTRIC DEVICE ASSY.



ROBIN EH-090D ENGINE — ELECTRIC DEVICE ASSY.

| <u>NO</u> | <u>PART NO</u> | <u>PART NAME</u> | <u>QTY.</u> | <u>REMARKS</u> |
|-----------|----------------|---------------------|-------------|----------------|
| 10 | 2307020831 | FLYWHEEL CP | 1 | |
| 11 | 2747020101 | IGNITION COIL CP | 1 | |
| 30 | 0011706250 | BOLT & WASHER ASSY. | 2 | |
| 60 | 0660000361 | SWITCH ASSY. | 1 | |
| 70 | 0150040090 | TAPPING SCREW | 2 | |
| 75 | 0566030010 | CLAMP | 1 | |
| 95 | 0659000010 | PLUG TERMINAL | 1 | |
| 100 | 0650140470 | SPARK PLUG NGK | 1 | |
| 110 | 2307510113 | SPARK PLUG CAP | 1 | |

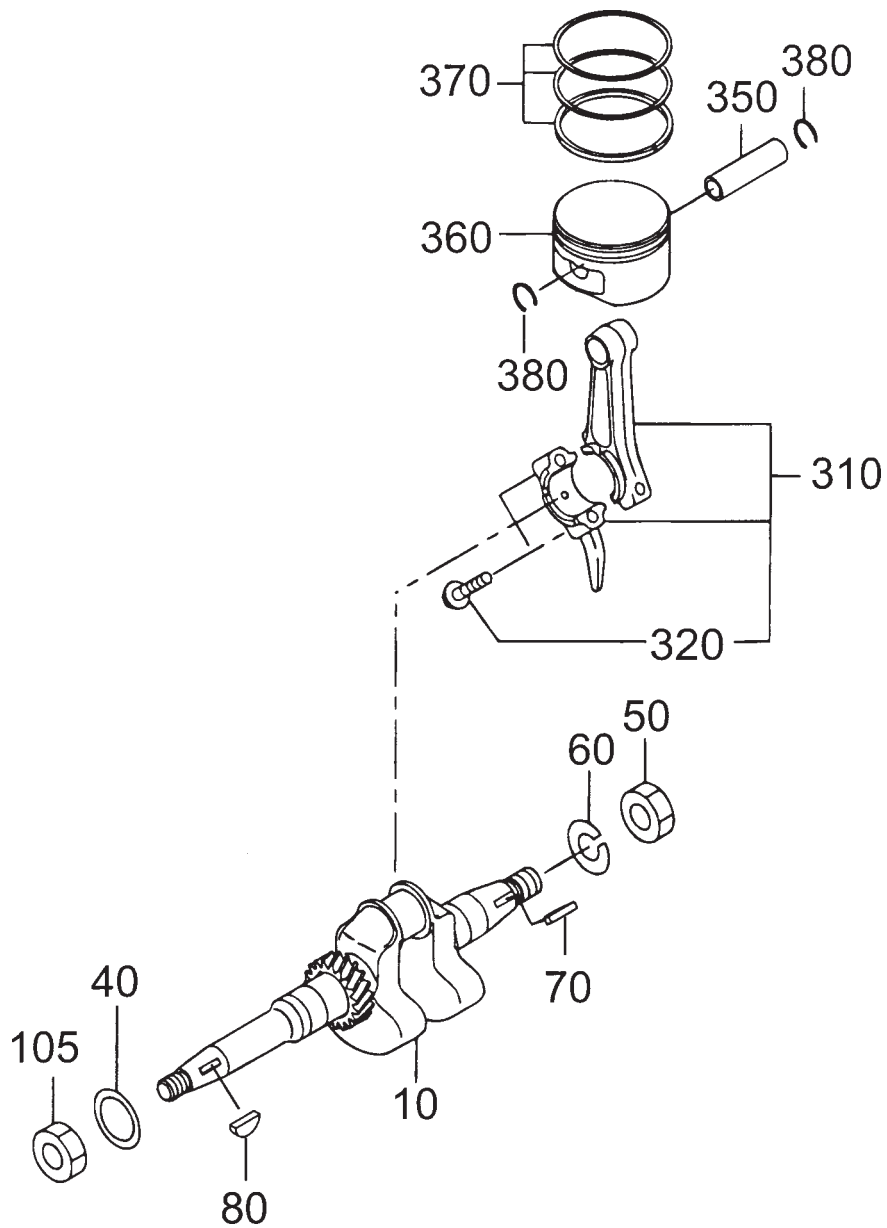
ROBIN EH-092D ENGINE — CRANKCASE ASSY.



ROBIN EH-092D ENGINE — CRANKCASE ASSY.

| NO | PART NO | PART NAME | QTY. | REMARKS |
|------|------------|--------------------------|------|---------------------|
| 10 | 2841010411 | CRANKCASE CP | 1 | INCLUDES ITEMS W/ # |
| 20& | 2371420203 | VALVE GUIDE | 2 | |
| 26& | 2771601001 | STEM SEAL CP | 1 | |
| 30# | 0440200070 | OIL SEAL 20X32X6 | 1 | |
| 40# | 0600200110 | BALL BEARING, 60074C3 | 1 | |
| 50# | 0310060020 | DOWEL PIN | 2 | |
| 70 | 0105060430 | STUD | 2 | |
| 75# | 0440060020 | OIL SEAL | 1 | |
| 80 | 0401140030 | PLUG | 1 | |
| 90 | 0211140020 | GASKET | 1 | |
| 150 | 2741600113 | STIFFENER | 1 | |
| 160 | 0011408250 | BOLT & WASHER | 4 | |
| 161 | 0011408300 | BOLT & WASHER ASSY. | 2 | |
| 205 | 0241090060 | GROMMET | 1 | |
| 210 | 2841100121 | MAIN BEARING COVER | 1 | INCLUDES ITEMS W/ * |
| 220* | 0440200110 | OIL SEAL 20X32X6 | 1 | |
| 230* | 0600200110 | BALL BEARING, 6004C3 | 1 | |
| 250 | 2844500301 | GOVERNOR GEAR CP | 1 | |
| 260 | 2054190103 | GOVERNOR SLEEVE | 1 | |
| 265* | 0013908500 | STUD | 4 | |
| 268* | 0310060020 | DOWEL PIN | 2 | |
| 270 | 2306360101 | OIL GAUGE | 1 | INCLUDES ITEMS W/ % |
| 280% | 0213160020 | GASKET | 1 | |
| 300 | 0130060200 | BOLT & WASHER | 9 | |
| 430 | 2741500123 | ADAPTER FLANGE | 1 | |
| 437 | 0021808000 | NUT | 4 | |
| 438 | 0032008000 | SPRING WASHER | 4 | |
| 439 | 0031108000 | WASHER | 4 | |
| 610 | 2841300110 | CYLINDER HEAD ASSY. | 1 | INCLUDES ITEMS W/ & |
| 620 | 2841500113 | GASKET HEAD | 1 | |
| 630 | 0110080210 | FLANGE BOLT | 1 | |
| 631 | 0100080410 | BOLT | 2 | |
| 680 | 2841550203 | ROCKER COVER | 1 | |
| 685 | 2841450203 | OIL SHELTER PLATE | 1 | |
| 690 | 2841600403 | GASKET, ROCKER COVER | 3 | |
| 700 | 2771501103 | PIPE KNOCK | 2 | |
| 710 | 0110060400 | FLANGE BOLT | 4 | |
| 721 | 2841560203 | BREATHER PLATE | 1 | |
| 722 | 2841600103 | LEAF VALVE | 1 | |
| 723 | 2841600203 | BREATHER PLATE | 1 | |
| 724 | 2841450103 | OIL SHELTER PLATE | 1 | |
| 725 | 0131050020 | SCREW & WASHER ASSY. | 2 | |
| 726 | 0131050020 | SCREW & WASHER ASSY. | 1 | |
| 810 | 2841700103 | COVER CASE | 1 | |
| 830 | 2301600613 | GASKET TAPPET COVER NA | 1 | |
| 860 | 0011406160 | BOLT & WASHER ASSY. | 2 | |
| 960 | 2849900117 | GASKET SET | 1 | |

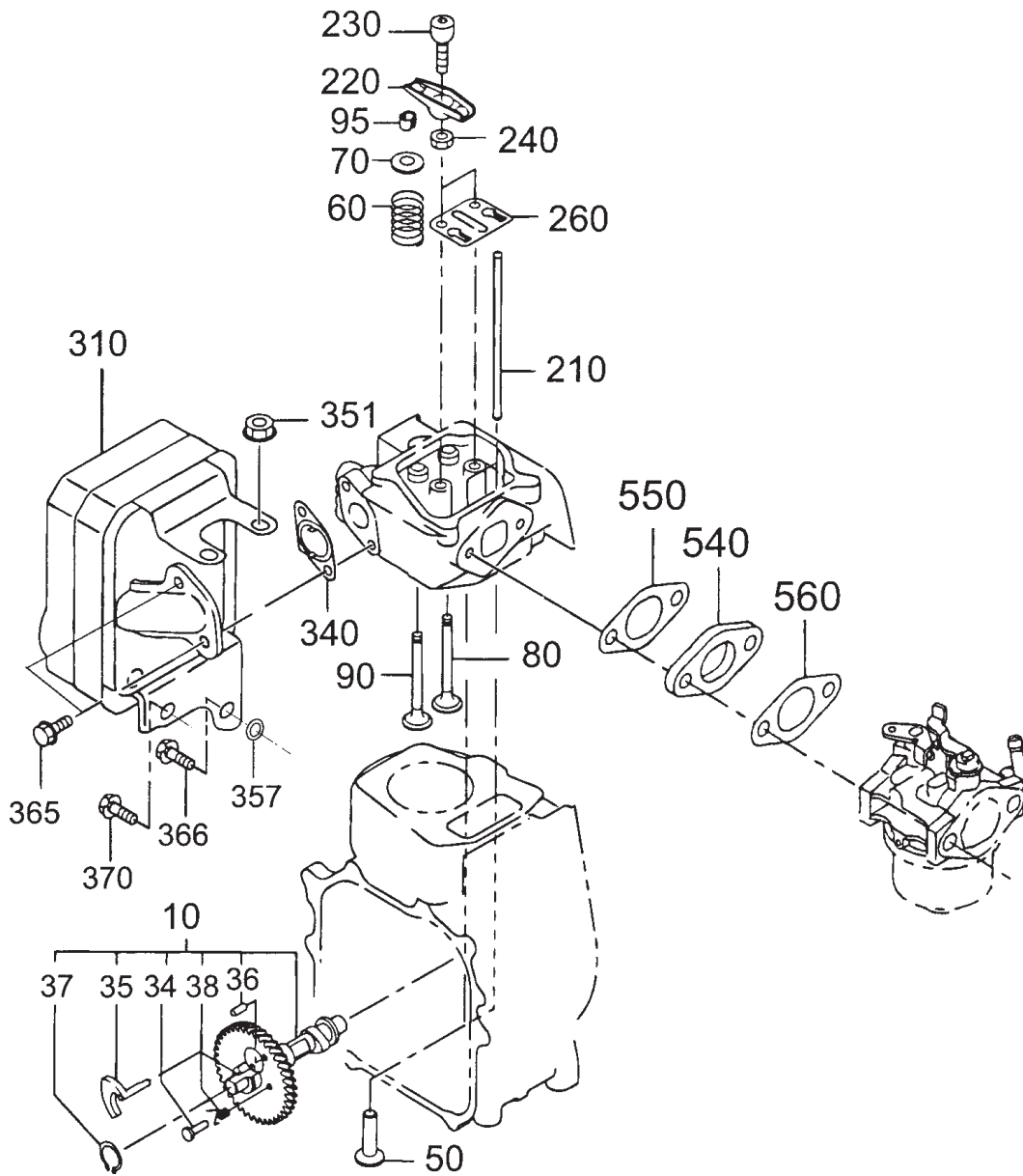
ROBIN EH-092D ENGINE — CRANKSHAFT AND PISTON ASSY.



ROBIN EH-092D ENGINE — CRANKSHAFT AND PISTON ASSY.

| <u>NO</u> | <u>PART NO</u> | <u>PART NAME</u> | <u>QTY.</u> | <u>REMARKS</u> |
|-----------|----------------|--------------------------|-------------|---------------------|
| 10 | 2842030101 | CRANKSHAFT CP | 1 | |
| 40 | 0230200100 | SPACER T=0.8 | 1 | |
| 41 | 0230200110 | SPACER T=1.0 | 1 | |
| 42 | 0230200120 | SPACER T=1.2 | 1 | |
| 50 | 0021814000 | NUT | 1 | |
| 60 | 0032014000 | SPRING WASHER | 1 | REPLACES 0032012000 |
| 70 | 0053203101 | WOODRUFF KEY | 1 | |
| 80 | 0053204201 | WOODRUFF KEY | 1 | |
| 105 | 0173120010 | LOCK NUT | 1 | |
| 310 | 2842250130 | CONNECTING ROD ASSY..... | 1 | INCLUDES ITEMS W/% |
| 320% | 2842300103 | CONNECTING ROD BOLT | 2 | |
| 350 | 2302330103 | PISTON PIN | 1 | |
| 360 | 28423401H3 | PISTON | 1 | |
| 360 | 28423402H3 | PISTON 0.25MM | 1 | |
| 360 | 28423403H3 | PISTON 0.50MM | 1 | |
| 370 | 2842351107 | PISTON RING SET | 1 | |
| 370 | 2842351207 | PISTON RING SET 0.25MM | 1 | |
| 370 | 2842351307 | PISTON RING SET 0.50MM | 1 | |
| 380 | 0565110010 | CLIP | 2 | |

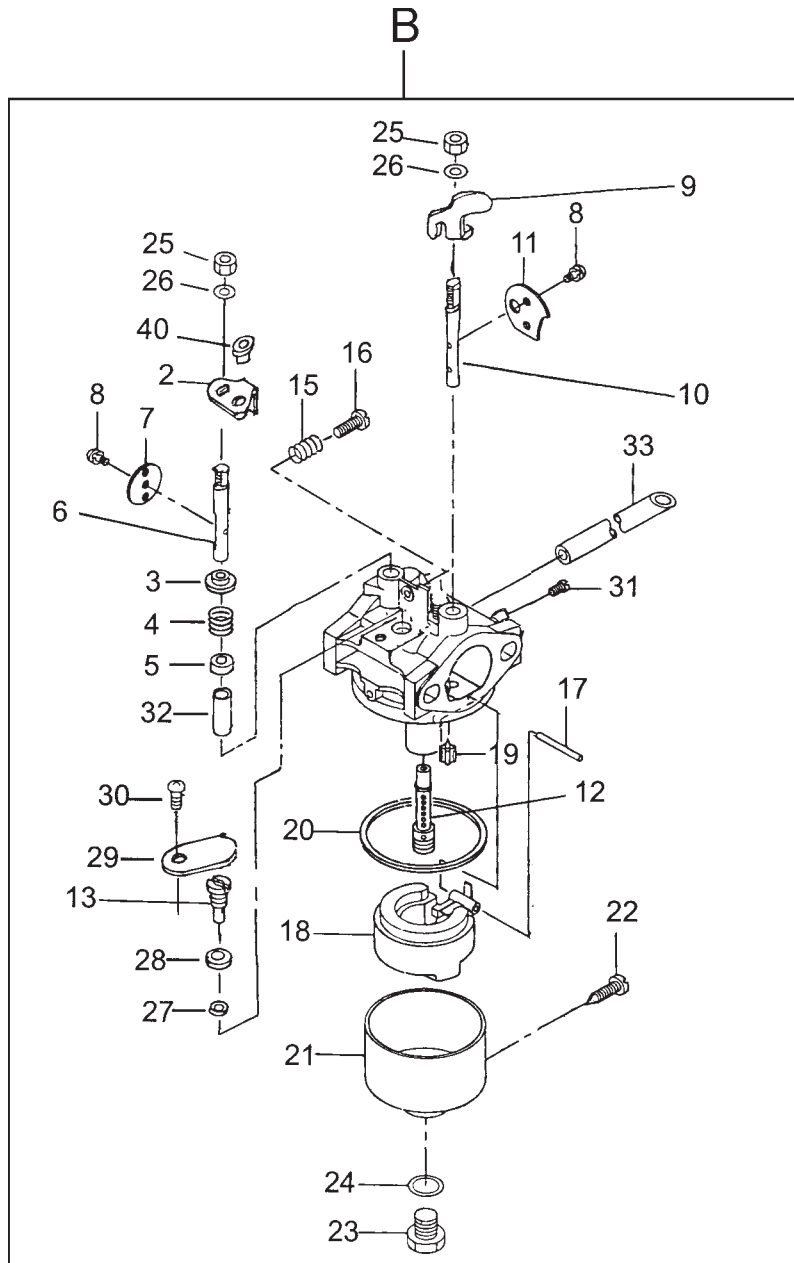
ROBIN EH-092D ENGINE — INTAKE AND EXHAUST ASSY.



ROBIN EH-092D ENGINE — INTAKE AND EXHAUST ASSY.

| <u>NO</u> | <u>PART NO</u> | <u>PART NAME</u> | <u>QTY.</u> | <u>REMARKS</u> |
|-----------|----------------|----------------------|-------------|--------------------|
| 10 | 2843170121 | CAMSHAFT CP | 1 | INCLUDES ITEMS W/% |
| 34% | 2273860123 | PIN (SPRING) | 1 | |
| 35% | 2843640103 | RELEASE LEVER | 1 | |
| 36% | 0051904100 | SPRING PIN | 1 | |
| 37% | 0031517000 | SNAP RING | 1 | |
| 38% | 2743870123 | RETURN SPRING | 1 | |
| 50 | 2743330103 | TAPPET | 2 | |
| 60 | 2743360103 | VALVE SPRING | 2 | |
| 70 | 2743370203 | SPRING RETAINER | 2 | |
| 80 | 2743340103 | INTAKE VALVE | 1 | |
| 90 | 2743350103 | EXHAUST VALVE | 1 | |
| 95 | 13210KA031 | COLLET VALVE | 4 | |
| 210 | 2743530103 | PUSH ROD | 2 | |
| 220 | 2743600303 | ROCKER ARM | 2 | |
| 230 | 2693580103 | BOLT (PIVOT) | 2 | |
| 240 | 0170060090 | NUT | 2 | |
| 260 | 2743650103 | GUIDE PLATE | 1 | |
| 310 | 2843010401 | MUFFLER CP | 1 | |
| 340 | 2843520103 | GASKET (EXHAUST) | 1 | |
| 351 | 0023808000 | FLANGE NUT | 2 | |
| 357 | 0200080170 | WASHER | 1 | |
| 365 | 0110060460 | FLANGE BOLT | 2 | |
| 366 | 0011408160 | BOLT & WASHER 8X16 | 1 | |
| 370 | 0130080240 | BOLT & WASHER ASSY. | 1 | |
| 540 | 1063292103 | INSULATOR | 1 | |
| 550 | 2843590203 | GASKET (INSULATOR) | 1 | |
| 560 | 1573500103 | GASKET 2 (INSULATOR) | 1 | |
| 570 | 0176060030 | SELF LOCK NUT | 2 | |

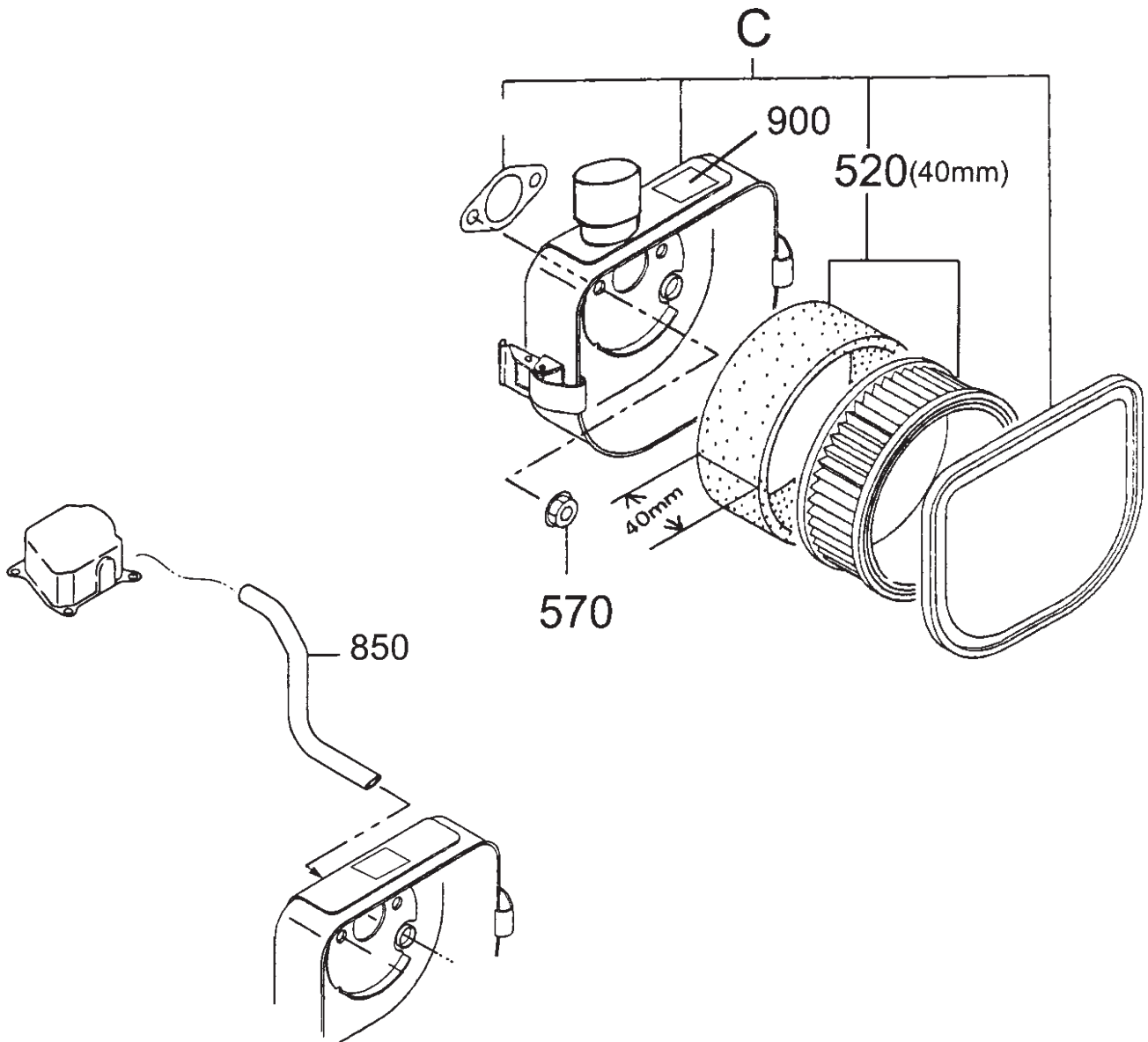
ROBIN EH-092D ENGINE — CARBURETOR ASSY.



ROBIN EH-092D ENGINE — CARBURETOR ASSY.

| <u>NO</u> | <u>PART NO</u> | <u>PART NAME</u> | <u>QTY.</u> | <u>REMARKS</u> |
|-----------|----------------|--------------------------|-------------|--------------------|
| B | 2846233200 | CARBURETOR ASSY. | 1 | INCLUDES ITEMS W/# |
| 2# | 2846253908 | LEVER SUB ASSY. THROTTLE | 1 | |
| 3# | 2846256008 | COLLAR | 1 | |
| 4# | 2846231608 | SPRING, THROTTLE | 1 | |
| 5# | 2516255908 | BUSH | 1 | |
| 6# | 2846253308 | SHAFT, THROTTLE | 1 | |
| 7# | 2846253508 | THROTTLE VALVE | 1 | |
| 8# | 2846245508 | SCREW | 2 | |
| 9# | 2846252908 | LEVER CHOKE | 1 | |
| 10# | 2846252308 | SHAFT CHOKE | 1 | |
| 11# | 2846252908 | VALVE CHOKE | 1 | |
| 12# | 2846240108 | MAIN JET #68 | 1 | |
| 13# | 2846242008 | SLOW JET | 1 | |
| 15# | 2516244908 | SRING | 2 | |
| 16# | 2776258108 | SCREW ADJUST | 2 | |
| 17# | 2846251508 | PIN, FLOAT LEVER | 1 | |
| 18# | 2846250508 | FLOAT ASSY. | 1 | |
| 19# | 2796250008 | VALVE NEEDLE | 1 | |
| 20# | 2846254008 | GASKET CHAMBER | 1 | |
| 21# | 2846255208 | CHAMBER ASSY. FLOAT | 1 | |
| 22# | 2516266108 | DRAIN SCREW | 1 | |
| 23# | 2846233508 | SCREW | 1 | |
| 24# | 2516235008 | GASKET | 1 | |
| 25# | 2846246508 | NUT | 2 | |
| 26# | 2846246008 | SPRING WASHER | 2 | |
| 27# | 2846245008 | O-RING | 1 | |
| 28# | 2846245108 | O-RING | 1 | |
| 29# | 2846256308 | PLATE | 2 | |
| 30# | 2846245608 | SCREW | 1 | |
| 31# | 2846246008 | JET | 1 | |
| 32# | 2846243008 | COLLAR | 1 | |
| 33# | 2516256508 | RUBBER PIPE | 1 | |
| 40# | 2844550103 | BUSH, THRO | 1 | |

ROBIN EH-092D ENGINE — AIR CLEANER ASSY.



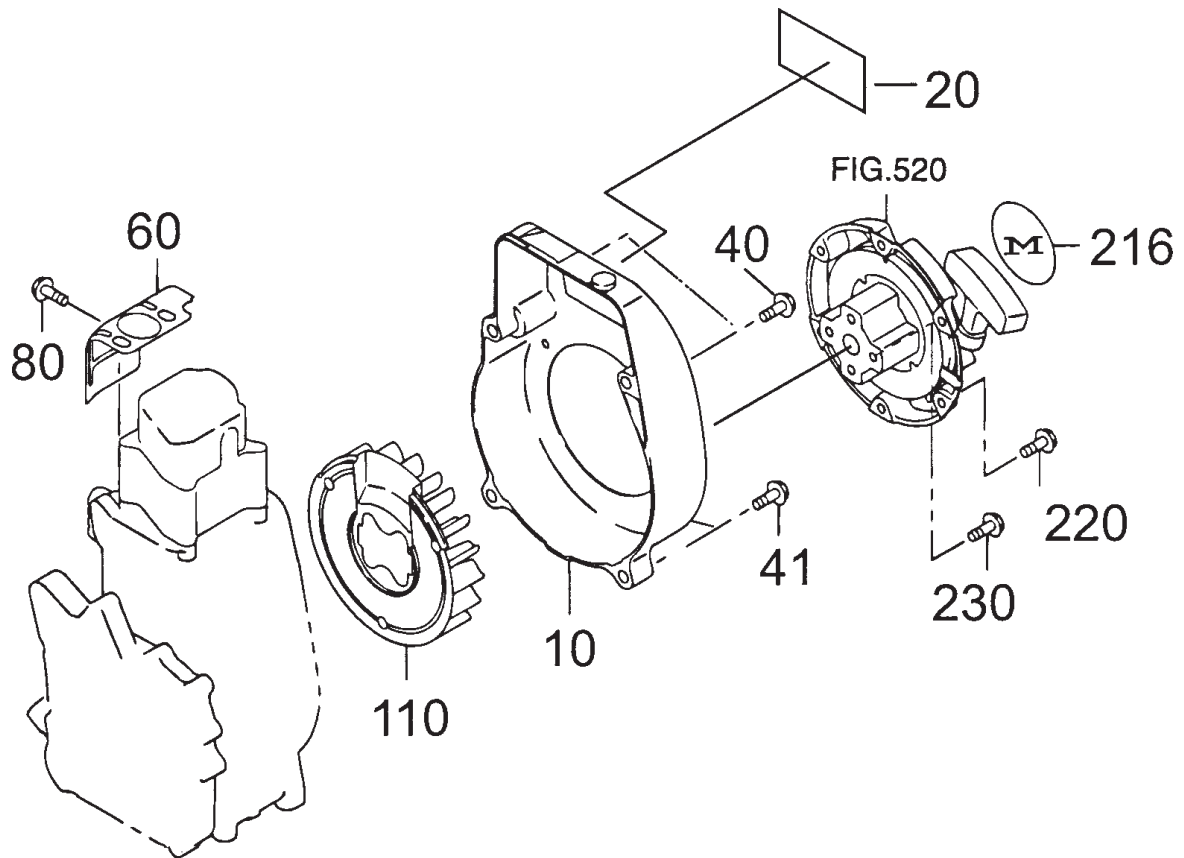
ROBIN EH-092D ENGINE — AIR CLEANER ASSY.

| <u>NO</u> | <u>PART NO</u> | <u>PART NAME</u> | <u>QTY.</u> | <u>REMARKS</u> |
|-----------|----------------|-------------------|-------------|--------------------|
| C | 2843260300 | AIR CLEANER ASSY. | 1 | INCLUDES ITEMS W/# |
| 520# | 2743260307 | ELEMENT SET/09 | 1 | |
| 570 | 0176060030 | SELF LOCK NUT | 2 | |
| 850 | 2841600403 | RUBBER PIPE | 1 | |
| 900# | 0732004430 | LABEL, CHOKE | 1 | |

ROBIN EH-092D ENGINE — GOVERNOR, OPERATION ASSY.

| <u>NO</u> | <u>PART NO</u> | <u>PART NAME</u> | <u>QTY.</u> | <u>REMARKS</u> |
|-----------|----------------|---------------------|-------------|----------------|
| 10 | 2844230403 | GOVERNOR LEVER | 1 | |
| 20 | 2304220103 | GOVERNOR SHAFT | 1 | |
| 30 | 2844270201 | GOVERNOR ROD | 1 | |
| 35 | 2844560103 | LINKAGE BUSHING | 1 | |
| 40 | 2844280403 | ROD SPRING | 1 | |
| 50 | 0031305000 | CLIP | 2 | |
| 60 | 0011406300 | BOLT & WASHER ASSY. | 1 | |
| 70 | 2844900201 | WEIGHT CP | 1 | |
| 80 | 2524250323 | GOVERNOR SPRING | 1 | |
| 200 | 2304330210 | SPEED CONTROL ASSY. | 1 | |
| 201 | 2744510101 | BASE PLATE | 1 | |
| 207 | 0110060010 | FLANGE BOLT | 2 | |
| 210 | 0043104140 | SCREW, PAN HEAD | 1 | |
| 213 | 0230100040 | SPACER | 1 | |
| 215 | 2264500313 | RETURN SPRING | 1 | |
| 230 | 0043106300 | SCREW | 1 | |
| 240 | 0022706000 | NUT | 1 | |
| 255 | 0217100020 | FRICTION WASHER | 1 | |
| 260 | 0140040070 | SCREW | 1 | |
| 265 | 2684500113 | CONTROL SPRING | 1 | |
| 280 | 2264310301 | LINK PIVOT | 1 | |

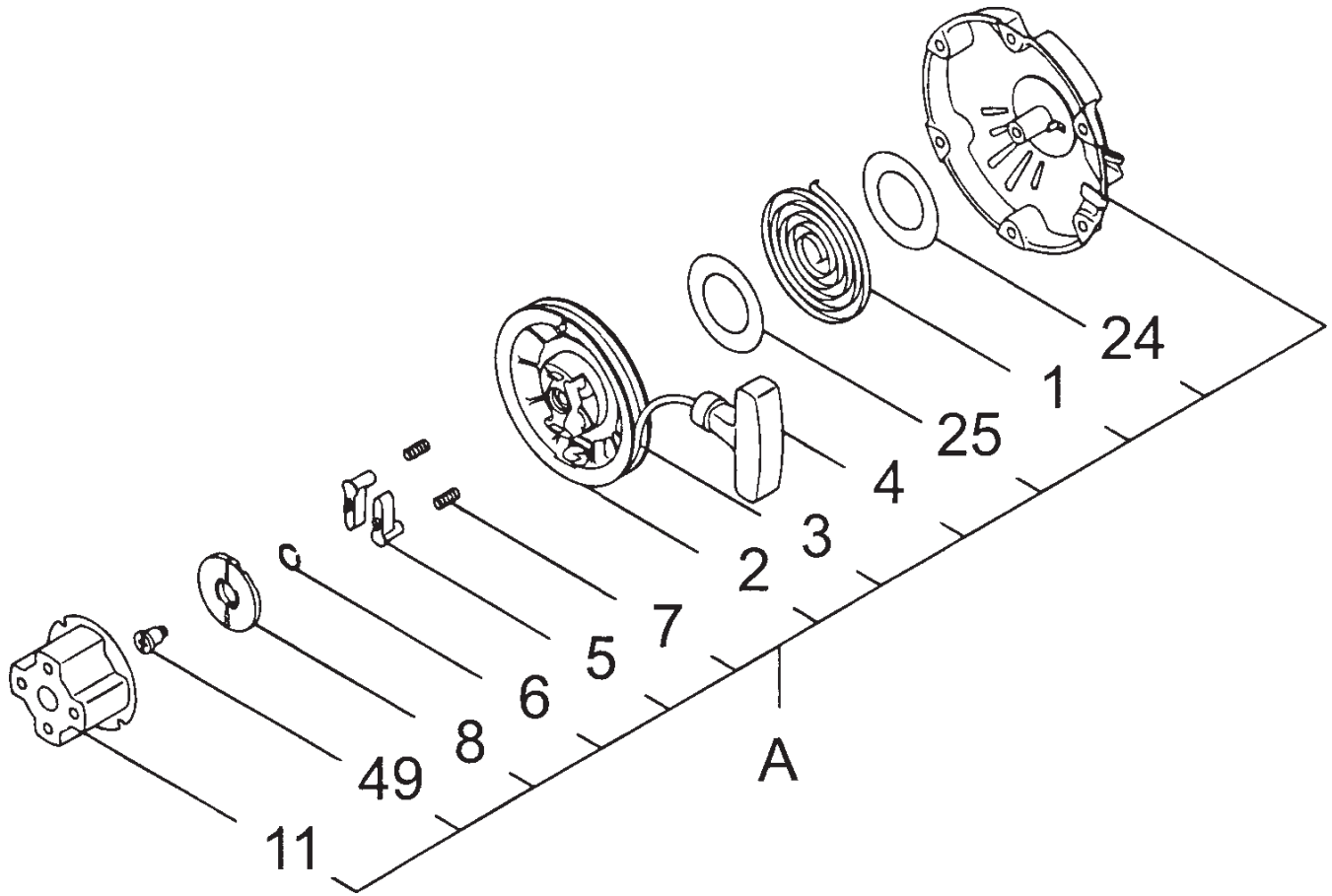
ROBIN EH-092D ENGINE — BLOWER HOUSING ASSY.



ROBIN EH-092D ENGINE — BLOWER HOUSING ASSY.

| <u>NO</u> | <u>PART NO</u> | <u>PART NAME</u> | <u>QTY.</u> | <u>REMARKS</u> |
|-----------|----------------|-------------------|-------------|----------------|
| 10 | 2845110213 | BLOWER HOUSING CP | 1 | |
| 20 | 2849510203 | LABEL | 1 | |
| 40 | 0010408350 | FLANGE BOLT | 1 | |
| 41 | 0010408200 | FLANGE BOLT | 1 | |
| 60 | 2845260123 | CYLINDER BAFFLE | 1 | |
| 80 | 0110060010 | FLANGE BOLT | 2 | |
| 110 | 2845410103 | COOLING BLOWER | 1 | |
| 216 | 920100240 | DECAL, M-MARK | 1 | |
| 220 | 0110060010 | FLANGE BOLT | 3 | |
| 230 | 0110060020 | FLANGE BOLT | 4 | |

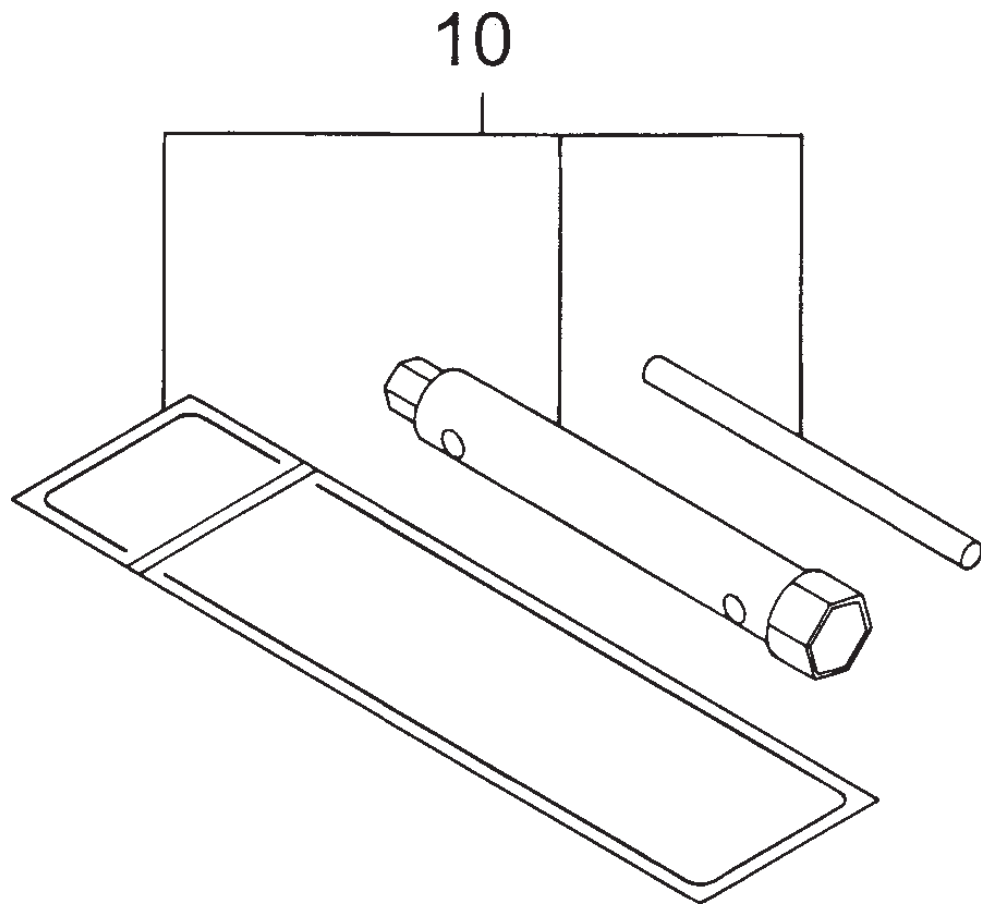
ROBIN EH-092D ENGINE — RECOIL STARTER ASSY.



ROBIN EH-092D ENGINE — RECOIL STARTER ASSY.

| <u>NO</u> | <u>PART NO</u> | <u>PART NAME</u> | <u>QTY.</u> | <u>REMARKS</u> |
|-----------|----------------|--------------------------|-------------|-------------------|
| A | 2845021120 | RECOIL STARTER ASSY..... | 1 | INCLUDES ITEM W/* |
| 1* | 2745011508 | SPIRAL SPRING | 1 | |
| 2* | 2745012018 | REEL | 1 | |
| 3* | 2745011208 | STARTER ROPE | 1 | |
| 4* | 2615010008 | STARTER KNOB | 1 | |
| 5* | 2705012508 | RATCHET | 2 | |
| 6* | 2745013108 | FRICTION SPRING | 1 | |
| 7* | 2275013508 | RETURN SPRING | 2 | |
| 8* | 2705026108 | RATCHET GUIDE | 1 | |
| 11* | 2845014508 | STARTING PULLEY | 1 | |
| 24* | 2745015208 | SLIDE PLATE, B | 1 | |
| 25* | 1315015008 | SLIDE PLATE | 1 | |
| 49* | 2275015208 | SET SCREW | 1 | |

ROBIN EH-092D ENGINE — ACCESSORIES ASSY.



ROBIN EH-092D ENGINE — ACCESSORIES ASSY.

| <u>NO</u> | <u>PART NO</u> | <u>PART NAME</u> | <u>QTY.</u> | <u>REMARKS</u> |
|-----------|----------------|--------------------|-------------|----------------|
| 10 | 2269030710 | ACCESSORY TOOL KIT | 1 | |