

PARTS MANUAL



Mikasa **SERIES**
MODEL MT-84F
TAMPING RAMMER
(ROBIN GASOLINE ENGINE)

Revision #3 (10/07/20)

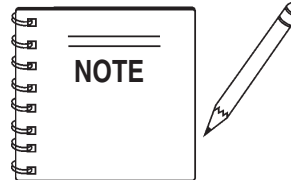
THIS MANUAL MUST ACCOMPANY THE EQUIPMENT AT ALL TIMES.

**Multiquip Tamping Rammer
MT-84F**

Table Of Contents 3
Explanation Of Codes In Remarks Column 4
Suggested Spare Parts 5
Nameplate and Decals 6-7
Crankcase and Engine Assembly 8-11
Guide Cylinder and Foot Assembly 12-13
Tank and Handle Assembly 14-15

**ROBIN EH-12-2D46051
ENGINE**

Crankcase and Cylinder Assembly 16-17
Crankshaft and Piston Assembly 18-19
Muffler, Air Cleaner, Camshaft, & Carb. Assy. 20-21
Governor Assembly 22-23
Recoil Starter and Blower Assembly 24-25
Magneto Assembly 26-27
Carburetor Assembly 28-29



*Specification and part number
are subject to change without
notice.*

MT-84F — EXPLANATION OF PARTS SECTION REMARKS

The following section explains the different symbols and remarks used in the Parts section of this manual. Use the help numbers found on the back page of the manual if there are any questions.

The contents and part numbers listed in the parts section are subject to change **without notice**. Multiquip does not guarantee the availability of the parts listed.

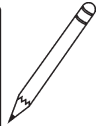
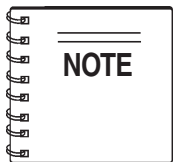
Sample Parts List:

NO.	PART NO.	PART NAME	QTY.	REMARKS
1	12345	BOLT	1	INCLUDES ITEMS W/*
2*		WASHER, 1/4 IN.		NOT SOLD SEPARATELY
2*	12347	WASHER, 3/8 IN.	1	MQ-45T ONLY
3	12348	HOSE	A/R ..	MAKE LOCALLY
4	12349	BEARING	1	S/N 2345B AND ABOVE

NO. Column

Unique Symbols - All items with same unique symbol (*, #, +, %, or >) in the number column belong to the same assembly or kit, which is indicated by a note in the “Remarks” column.

Duplicate Item Numbers - Duplicate numbers indicate multiple part numbers are in effect for the same general item, such as different size saw blade guards in use or a part that has been updated on newer versions of the same machine.



When ordering a part that has more than one item number listed, check the remarks column for help in determining the proper part to order.

PART NO. Column

Numbers Used - Part numbers can be indicated by a number, a blank entry, or TBD.

TBD (To Be Determined) is generally used to show a part that has not been assigned a formal part number at time of publication.

A blank entry generally indicates that the item is not sold separately or is not sold by Multiquip. Other entries will be clarified in the “Remarks” Column.

QTY. Column

Numbers Used - Item quantity can be indicated by a number, a blank entry, or A/R.

A/R (As Required) is generally used for hoses or other parts that are sold in bulk and cut to length.

A blank entry generally indicates that the item is not sold separately. Other entries will be clarified in the “Remarks” Column.

REMARKS Column

Some of the most common notes found in the “Remarks” Column are listed below. Other additional notes needed to describe the item can also be shown.

Assembly/Kit - All items on the parts list with the same unique symbol will be included when this item is purchased.

Indicated by:

“INCLUDES ITEMS W/(unique symbol)”

Serial Number Break - Used to list an effective serial number range where a particular part is used.

Indicated by:

“S/N XXXXX AND BELOW”

“S/N XXXX AND ABOVE”

“S/N XXXX TO S/N XXX”

Specific Model Number Use - Indicates that the part is used only with the specific model number or model number variant listed. It can also be used to show a part is NOT used on a specific model or model number variant.

Indicated by:

“XXXXX ONLY”

“NOT USED ON XXXX”

“Make/Obtain Locally” - Indicates that the part can be purchased at any hardware shop or made out of available items. Examples include battery cables, shims, and certain washers and nuts.

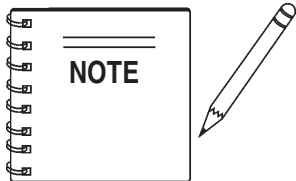
“Not Sold Separately” - Indicates that an item cannot be purchased as a separate item and is either part of an assembly/kit that can be purchased, or is not available for sale through Multiquip.

MT-84F RAMMER 1 TO 3 UNITS

QTY	PART NO	DESCRIPTION
1	362455630	LEVER, THROTTLE
1	956100045	THROTTLE WIRE
3	354030030	ELEMENT, YELLOW
3	354030040	ELEMENT, GRAY
1	361910070	CAP, FUEL TANK W/STRAP
1	954300720	COCK, FUEL ASSY.
2	301419750	FILTER, IN-LINE FUEL
3	2523260107	ELEMENT, SET ENGINE
1	0660000371	STOP SWITCH ASSY
3	0650140580	SPARK PLUG
1	954406010	STRAINER, FUEL TANK
1	2695011008	ROPE, RECOIL STARTER

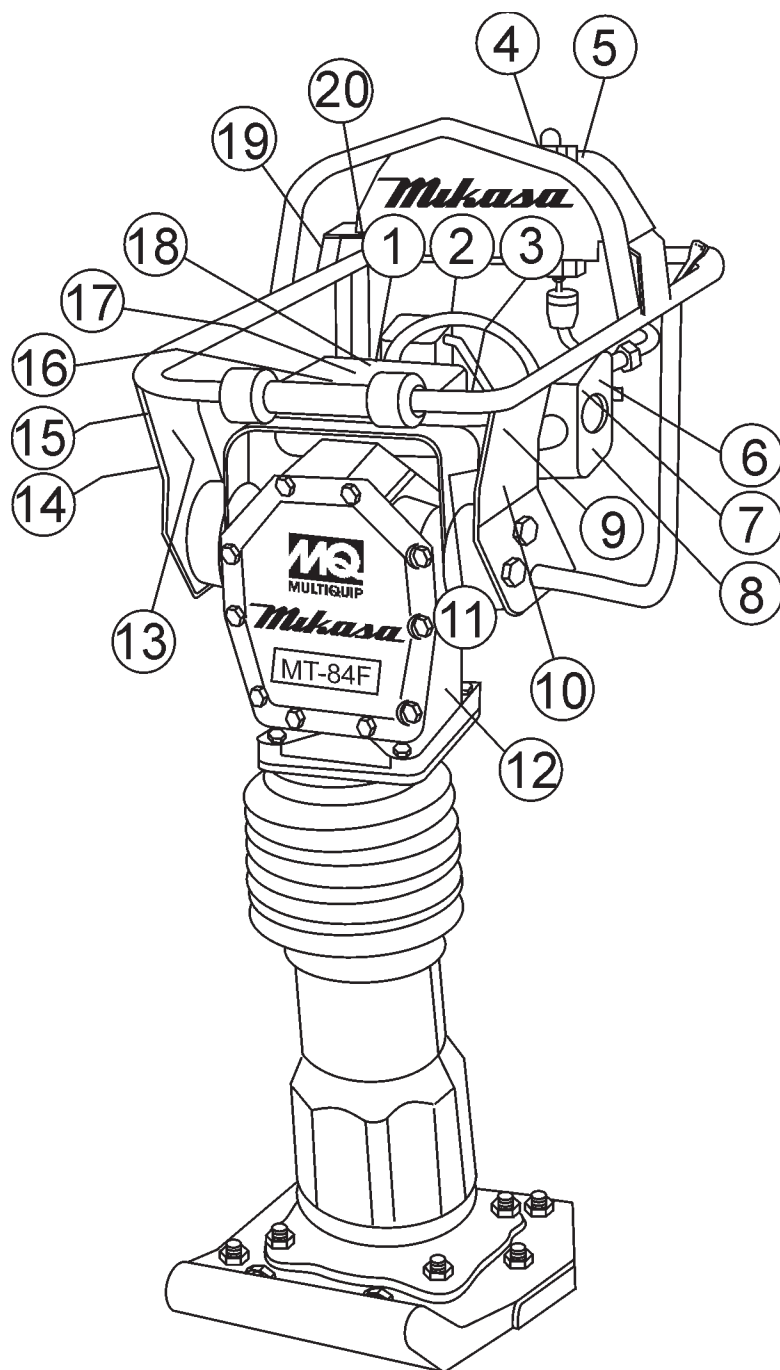
MT-84F RAMMER 3 TO 5 UNITS

QTY	PART NO	DESCRIPTION
1	362455630	LEVER, THROTTLE
1	956100045	THROTTLE WIRE
5	354030030	ELEMENT, YELLOW
5	354030040	ELEMENT, GRAY
2	354336352	CLAMP, BELLOWS
2	354010010	BELLOWS
1	361910070	CAP, FUEL TANK W/STRAP
1	954300720	COCK, FUEL ASSY.
5	301419750	FILTER, IN-LINE FUEL
5	2523260107	ELEMENT, SET ENGINE
1	0660000371	STOP SWITCH ASSY
5	0650140580	SPARK PLUG
1	954406010	STRAINER, FUEL TANK
1	2695011008	ROPE, RECOIL STARTER



Part number on this Suggested Spare Parts List may super cede/ replace the P/N shown in the text pages of this book.

NAME PLATE AND DECALS



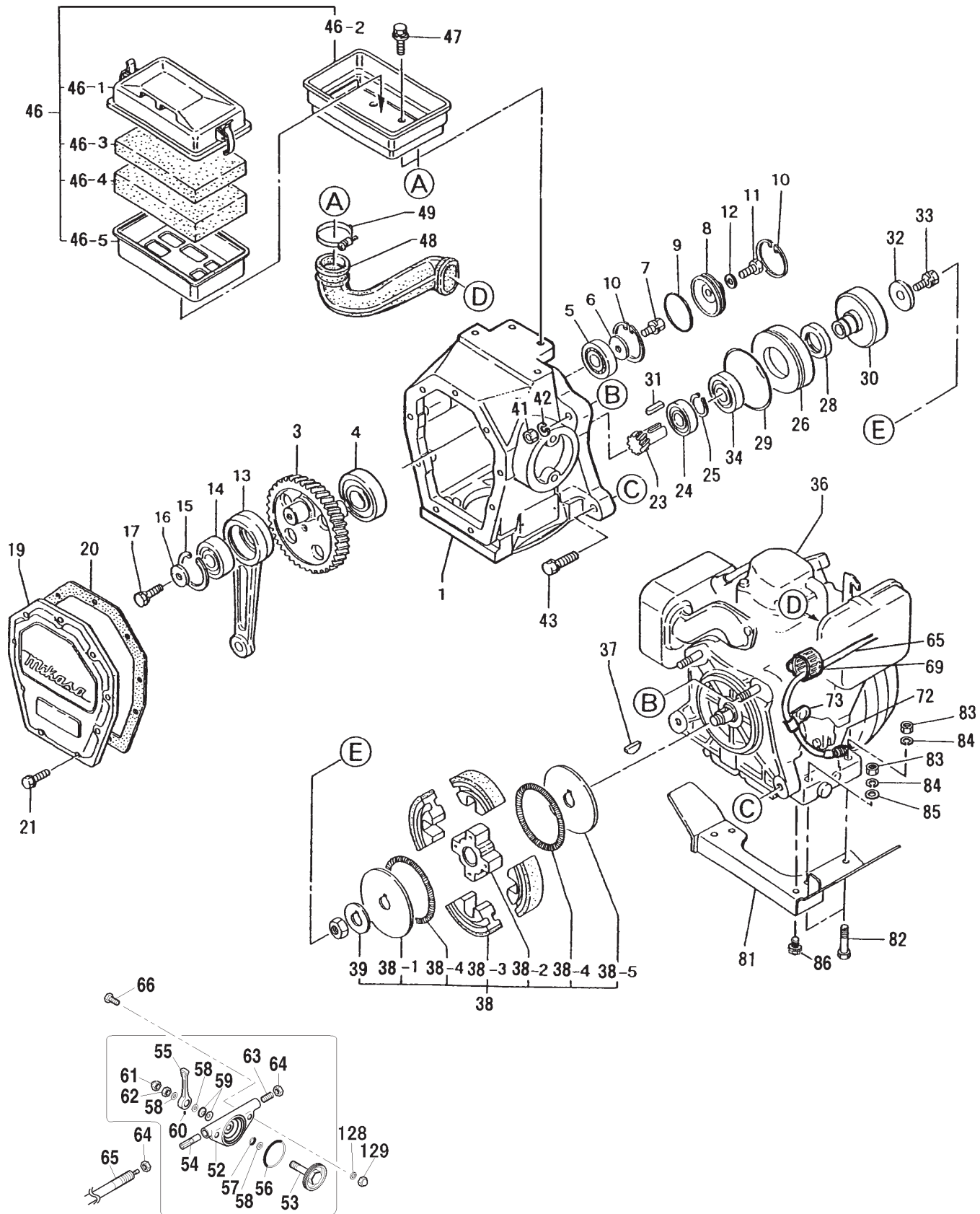
MT-84F— NAMEPLATE AND DECALS

NAME PLATE AND DECALS

<u>NO</u>	<u>PART NO</u>	<u>PART NAME</u>	<u>QTY.</u>	<u>REMARKS</u>
1	920210150	DECAL: 3500 ~ 3700 RPM.....	1	NPA1015
2	920203990	DECAL: CLOSE FUEL COCK	1	NPA-399
3	920202930	DECAL: START SWITCH	1	NPA-293
4	920202930	DECAL: GASOLINE ONLY	1	NPA-1017
5	920208960	DECAL: GASOLINE ONLY TAG	1	NPA-896
6	920108310	DECAL: CLEANER ELEMENT	1	NPA-831
7	920203980	DECAL: ELEMENT SET	1	NPA-398
8	920210160	DECAL: SERVICE MONTHLY	1	NPA-1016
9	TBD	DECAL: WARNING READ	1	
10	0732004450	DECAL: CAUTION	1	
11	920203290	DECAL: READ MANUAL	1	NPA-329
12		NAMEPLATE	1	CONTACT MQ PARTS DEPT.
13	920107000	DECAL: PRE-CLEANER	1	NP-700
14	920209100	DECAL: CAUTION RAMMER	1	NPA-910
15	920207690	DECAL: CAUTION MANUAL	1	NPA-769
16	920210180	DECAL: CHECK DAILY (FILTER)	1	NPA-1018
17	920209750	DECAL: CAUTION 4-CYCLE	1	NPA-975
18	920204370	DECAL: PRE-CLEANER	1	NPA-437
19	920203330	DECAL: EAR PROTECTION	1	NPA-333
20	920100240	DECAL: MIKASA LOGO	1	

MT-84F — CRANKCASE AND ENGINE ASSY.

CRANKCASE AND ENGINE ASSY.



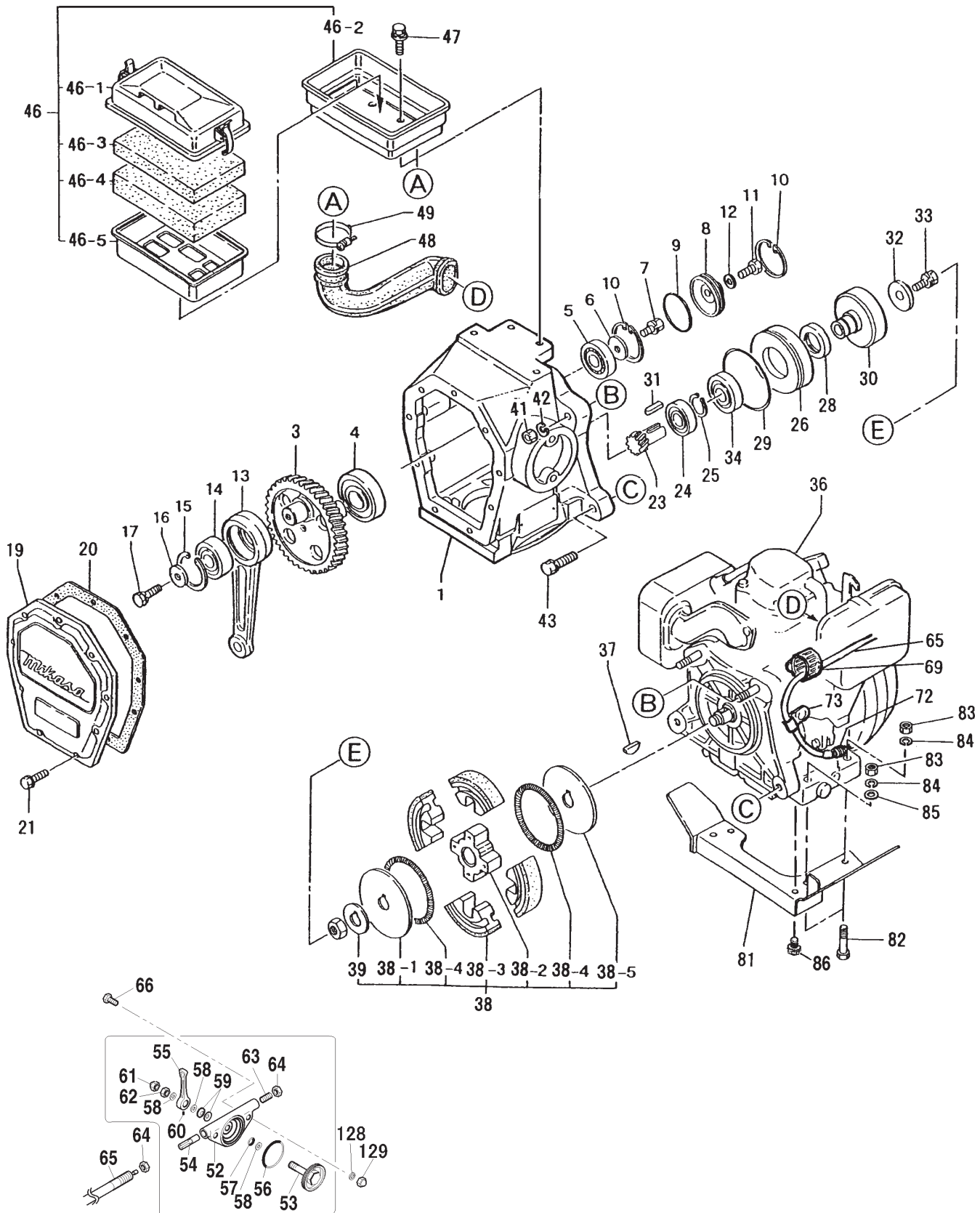
MT-84F — CRANKCASE AND ENGINE ASSY.

CRANKCASE AND ENGINE ASSY.

<u>NO.</u>	<u>PART NO.</u>	<u>PART NAME</u>	<u>QTY.</u>	<u>REMARKS</u>
1	361117380	CRANK CASE	1	
3	361335870	CRANK GEAR	1	
4	040006207	BEARING 6207	1	
5	040006204	BEARING 6204	1	
6	952400130	WASHER 9304	1	
7	002210825	BOLT 8X25 H, SW	1	
8	371447650	BEARING COVER	1	
9	050300480	O-RING S-48	1	
10	080100480	STOP RING R-48	2	
11	001220610	BOLT 6X10 T	1	
11-1	001200610	BOLT 6X110	1	
12	031106100	WASHER M5	1	
13	371334730	CONNECTING ROD	1	
14	040006304	BEARING 6304	1	
15	080100520	STOP RING R-52	1	
16	952400130	WASHER 9304	1	
17	002210825	BOLT 8X25 H, SW	1	
19	361010070	PACKING, FRONT COVER	1	
20	352444450	PACKING, FRONT COVER	1	
21	002210620	BOLT 6X20 H, SW	9	
23	361449320	PINION	1	
24	040006204	BEARING 6204	1	
25	080200350	STOP RING S-35	1	
26	371449600	SPACER	1	
28	060404010	OIL SEAL TC-40528	1	
29	050101000	O-RING G-100	1	
30	361449330	CLUTCH DRUM	1	
31	952405610	KEY 5X5X19R	1	
32	952405490	LOCK WASHER	1	
33	002210820	BOLT 8X20 H, SW	1	
34	041006007	BEARING 6007Z	1	
36	911211202	ENGINE ASSY., EH12-2D EPA	1	
37	0053204201	WOODRUFF KEY	1	
38	362454441	CLUTCH ASSY. CE120P 1.6T	1	INCLUDES ITEMS W/*
38-1*	943060020	CLUTCH GUIDE/B	1	
38-2*	943050050	CLUTCH BOSS C812	1	
38-3*	943020020	CLUTCH SHOE C812	4	
38-4*	943030021	CLUTCH SPRING C812	2	
38-5*	943060100	CLUTCH GUIDE/A 1.6T,1C	1	
39*	301010210	WASHER, LOCK CLUTCH	1	

MT-84F — CRANKCASE AND ENGINE ASSY.

CRANKCASE AND ENGINE ASSY. CONTINUED



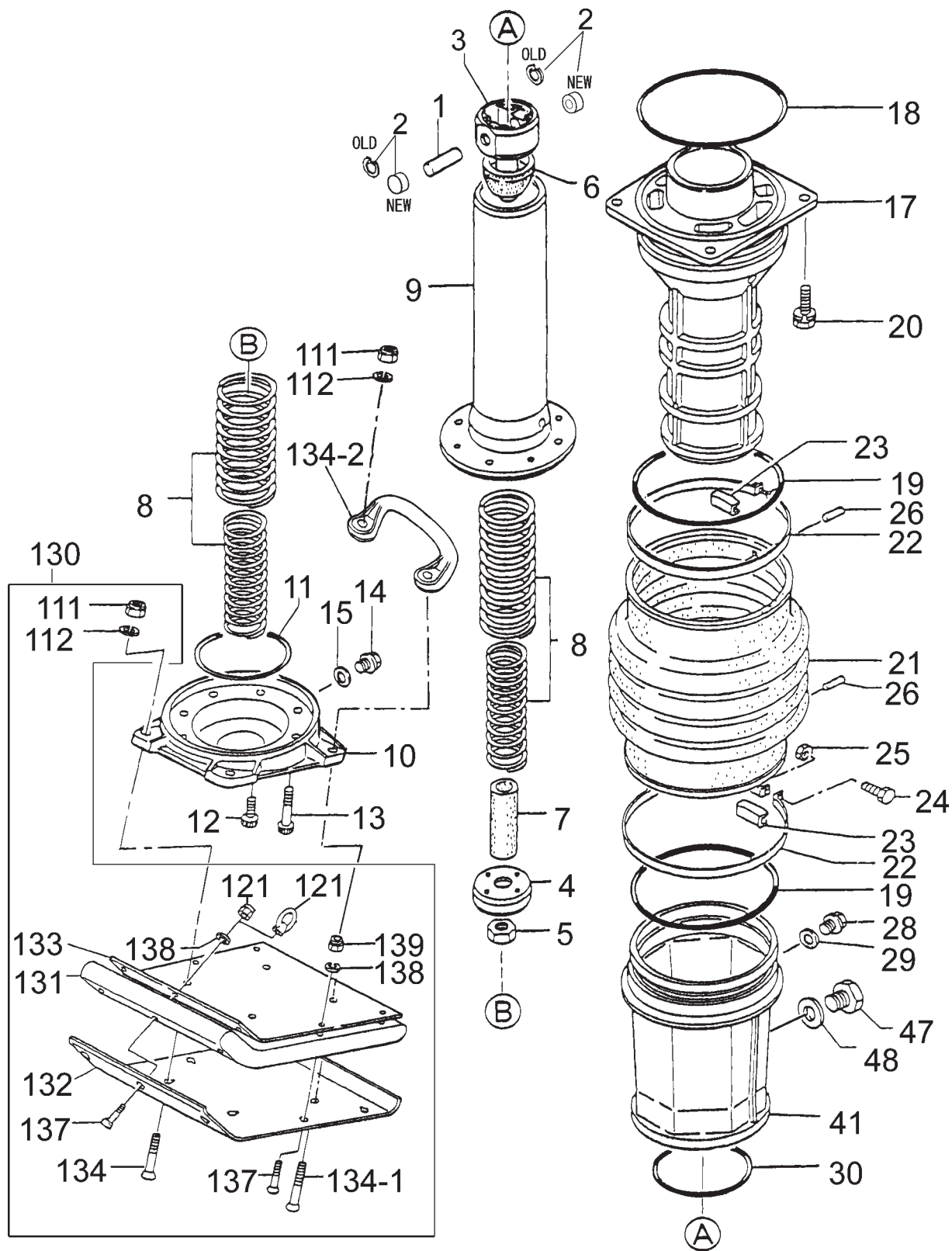
MT-84F — CRANKCASE AND ENGINE ASSY.

CRANKCASE AND ENGINE ASSY. CONTINUED

<u>NO</u>	<u>PART NO</u>	<u>PART NAME</u>	<u>QTY.</u>	<u>REMARKS</u>
41	020310080	NUT M10	2	
42	030210250	SW M10	2	
42-1	030210250	SW M10	4	
43	002211050	BOLT 10X50 H, SW	2	
43-1	001221050	BOLT 10X50 T	2	
46	361213800	AIR CLEANER ASSY	1	INCLUDES ITEMS W/#
46-1#	354030011	BODY /W-CLEANER	1	
46-2#	361010020	BACK PLATE CP	1	
46-3#	354030030	ELEMENT, YELLOW	1	
46-4#	354030040	ELEMENT, GRAY	1	
47-5#	354030050	ELEMENT FRAME	1	
47	002210820	BOLT 8X20 H, SW	4	
47-1	002200820	BOLT 8X20 , SW	4	
48	361336010	INTAKE PIPE	1	
49	954010230	HOSE BAND (B), AH-1032	1	
52	362341550	THROTTLE BODY	1	
53	362455610	THROTTLE GEAR	1	
53-1	362910090	THROTTLE GEAR CP, W/BOLT	1	
54	362455620	SLIDER	1	
55	362455630	THROTTLE LEVER	1	
56	050100450	O-RING G-45	1	
57	050200100	O-RING P-10	1	
58	031110160	PW M10	3	
59	032110180	CONICAL SPRING WASHER M10	2	
60	096206006	SOCKET HEAD SCREW 6X6	1	
61	022131008	CAP NUT M10	1	
62	020410060	NUT M10, H=6	1	
63	096208020	SOCKET HEAD SCREW 8X20	1	
64	020408050	NUT M8, H=5	2	
65	956100045	THROTTLE WIRE, S680-780/84	1	
66	001220620	BOLT 6X20 T	2	
67	030206150	WASHER, LOCK M6	2	
68	022130605	CAP NUT M6	2	
69	30310450	BAND	1	
72	0830000010	COIL SPRING	1	
73	959006120	CLIP, TCP2-10509B	1	
81	361214201	UNDER PROTECTOR	1	
82	001220840	BOLT 8X40 T	3	
83	020308060	NUT M8	3	
84	030208200	WASHER, LOCK M8	3	
85	031108160	WASHER, FLAT M8	3	
86	0011308180	BOLT & WASHER ASSY.	2	

MT-84F — GUIDE CYLINDER AND FOOT ASSY.

GUIDE CYLINDER AND FOOT ASSY.



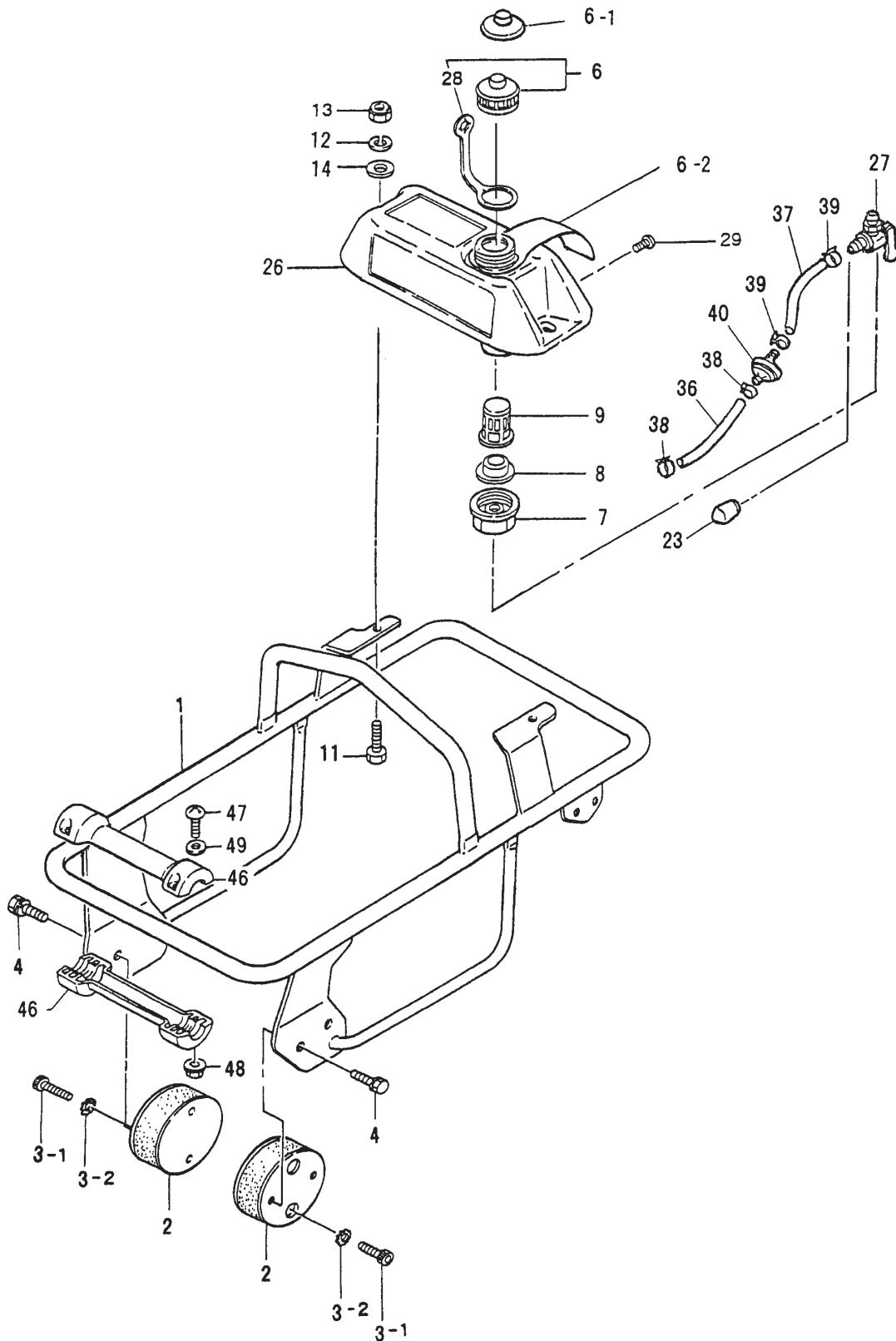
MT-84F — GUIDE CYLINDER AND FOOT ASSY.

GUIDE CYLINDER AND FOOT ASSY.

<u>NO.</u>	<u>PART NO.</u>	<u>PART NAME</u>	<u>QTY.</u>	<u>REMARKS</u>
1	352423290	PISTON PIN	1	
2	080100150	STOP RING R-15	1	S/N M1372 AND BELOW
2	080100150	STOP RING R-15	1	S/N M1373 AND ABOVE
3	355338690	PISTON ROD	1	
4	355452340	PISTON END	1	
5	020118150	NUT M18, P1.5	1	
6	355447250	STOPPER UPPER	1	
7	355447260	STOPPER, LOWER	1	
8	355447270	MAIN SPRING	2	
9	355334310	SPRING CYLINDER	1	
10	355214140	FOOT PLATE, 14	1	
11	050100900	O-RING G-90	1	
12	001521020	SOCKET HEAD BOLT 10X20 T	4	
13	001521040	SOCKET HEAD BOLT 10X40 T	4	
14	953405270	PLUG 1/4X14 13L	1	
15	953405260	PACKING 1/4 (CU)	1	
17	355213010	GUIDE CYLINDER	1	
18	050201500	O-RING P-150	1	
19	002211035	BOLT 10X35 H, SW	4	
21	354010010	BELLOWS, ORANGE	1	
22	050931500	O-RING JASO3150	2	
23	354336352	BELLOWS CLAMP, 1.6T 171D	2	
24	35442340	BAND GUIDE, BELLOWS	2	
25	001210840	BOLT 8X40 H	2	REPLACES 001220840
26	020308060	NUT M8	2	
27	354446170	PIN 6D-8.5L	2	
28	953405270	PLUG 1/4X14 13L	2	
29	953405260	PACKING 1/4 (CU)	2	
30	050100950	O-RING G-95	1	
41	355113960	PROTECTION SLEEVE	1	
47	959010150	LEVEL GAUGE, PLUG TYPE	1	
48	953404670	COPPER PACKING 17X25.5X1	1	
100	361910050	FOOT ASSY 285W, S80	1	INCLUDES ITEMS W/*
111	0227112174	NYLON NUT M12	4	
112	030212300	WASHER, LOCK M12	4	
131*	352108220	FOOT 285B-331L	1	
132*	352108230	METAL SHEET	1	
133*	352333380	FOOT COVER	1	
134	001611253	SUNK HEAD BOLT 12X65 H	4	
134-1	001611253	SUNK HEAD BOLT 12X65 H	2	
134-2	001611259	SUNK HEAD BOLT 12X95 H	2	
134-3	363343390	HANDLE	1	
137*	001611051	SUNK HEAD BOLT 10X55 H	7	
138*	030210250	WASHER, LOCK M10	7	
139*	022711012	NYLON NUT M10	7	

MT-84F — TANK AND HANDLE ASSY.

TANK AND HANDLE ASSY.



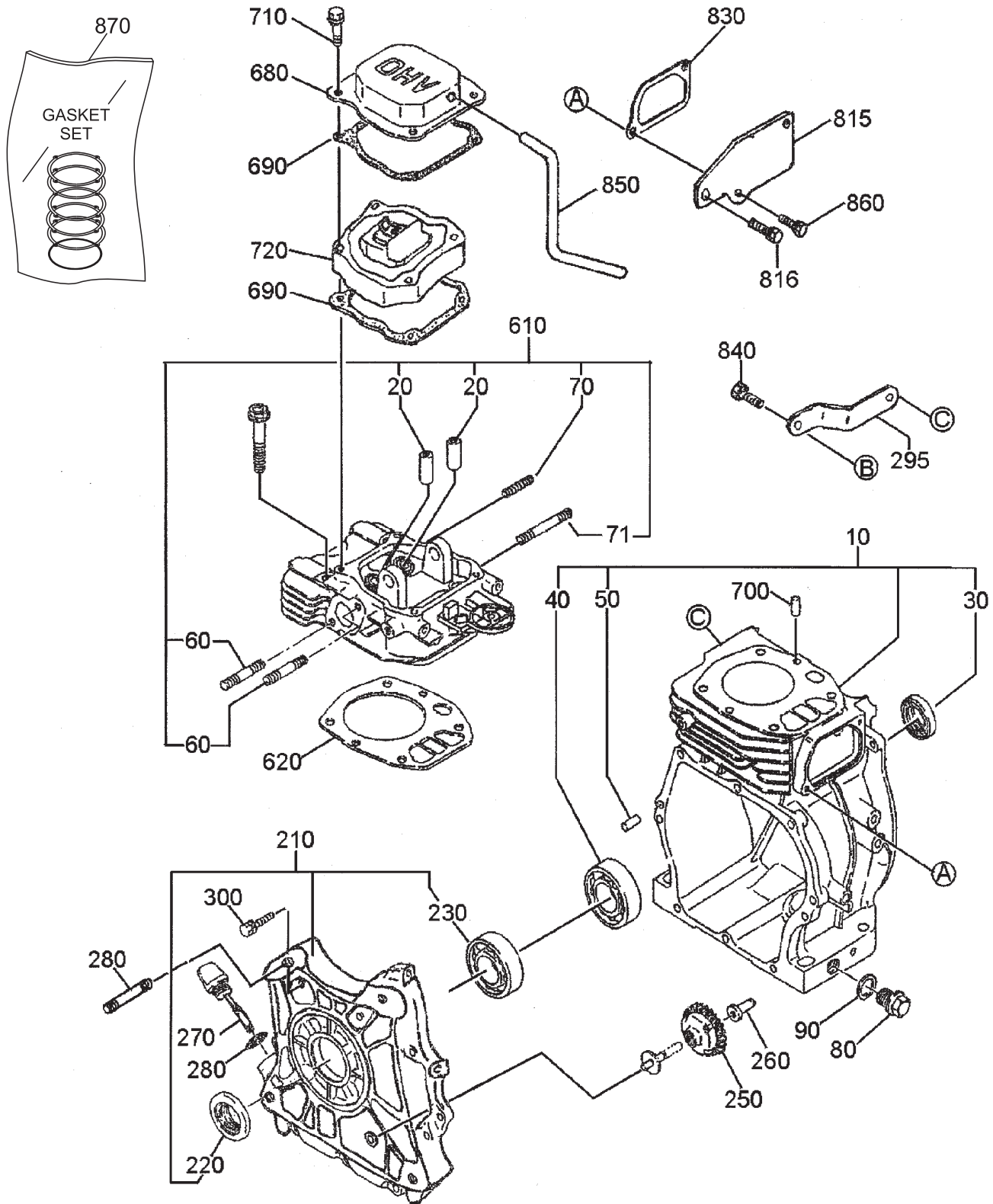
MT-84F — TANK AND HANDLE ASSY.

TANK AND HANDLE ASSY.

<u>NO</u>	<u>PART NO</u>	<u>PART NAME</u>	<u>QTY.</u>	<u>REMARKS</u>
1	361117410	HANDLE	1	REPLACES 361117750
2	351319900	SHOCK ABSORBER	2	
3	009110007	GT CAP SA, 10X20	4	
3-1	014210020	SOCKET HEAD BOLT 10X20T	4	REPLACES 001521020
3-2	033121009	TOOTH LOCKED WASHER BM10	4	
4	002211020	BOLT 10X20 H, SW	4	
6	361910070	TANK CAP ASSY., OR,DB	1	INCLUDES ITEM W/*
6-1	361455740	SUB. CAP, B	1	
6-2	920208960	TAG, GASOLINE	1	
7	351437735	HOLDER, COCK	1	
8	954406020	PACKING, FUEL TANK	1	
9	954406010	STRAINER, #110	1	
11	011208030	BOLT 8X30 T	2	REPLACES 001220830
12	030208200	WASHER, LOCK M8	2	
13	022710809	NYLON NUT M8	2	
14	952401450	WASHER 8.5X22X3	2	
23	353432250	CAP	1	
26	361116910	FUEL TANK, 2.5L P, G	1	
27	954300720	FUEL COCK ASSY. CVL-08	1	
28*	353449010	STRAP, OIL TANK	1	
29	009110014	PAN HEAD SCREW 8X10	2	
32	954406420	HOSE BAND 10.5	2	
36	351435160	FUEL HOSE B-95	1	
37	351436350	FUEL HOSE R-15OL D8	1	
38	954404590	HOSE BAND 9.5D	2	
39	954403030	HOSE BAND, 8	2	
40	301419750	FUEL FILTER CP	1	
46	955200052	ROLLER, W/PIN	2	
46-1	955200053	ROLLER, W/PIN	2	
47	091005025	SCREW 5X25	4	
48	022610505	FLANGE NUT, M5 H	4	
49	031105080	WASHER, FLAT M5	4	

ROBIN EH-12-2D ENGINE — CRANKCASE AND CYLINDER ASSY.

CRANKCASE AND CYLINDER ASSY.



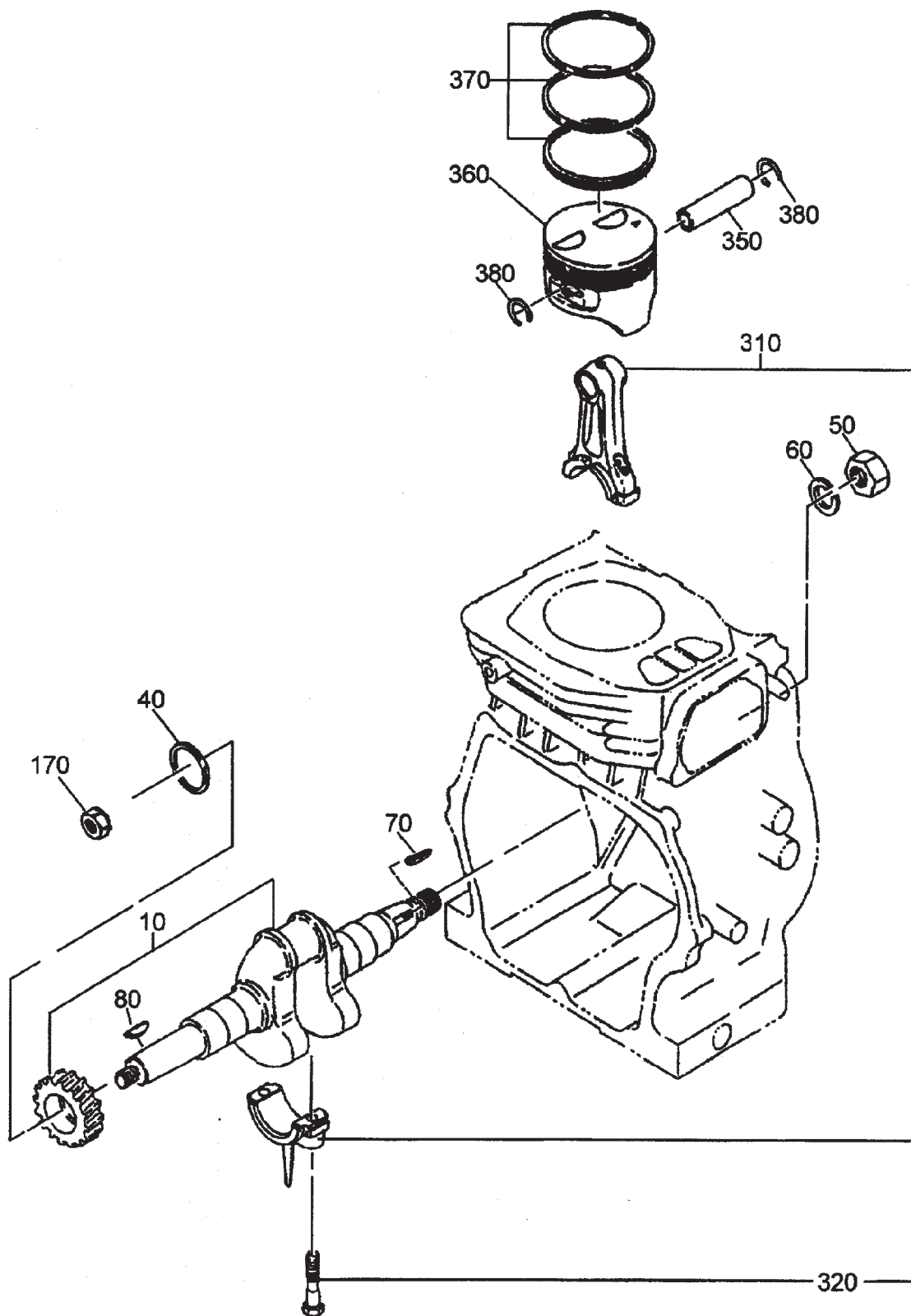
ROBIN EH-12-2D ENGINE — CRANKCASE AND CYLINDER ASSY.

CRANKCASE AND CYLINDER ASSY.

<u>NO.</u>	<u>PART NO.</u>	<u>PART NAME</u>	<u>QTY.</u>	<u>REMARKS</u>
10	2521030111	CRANK CASE	1	INCLUDES ITEMS W/\$
20+	2371420203	VALVE GUIDE, OVERSIZE	2	
26	2371600801	VALVE, STEM SEAL	1	
30\$	0440250150	OIL SEAL	1	
40\$	0600250010	BALL BEARING 6205C3	1	
50\$	0310060020	DOWEL PIN	2	
60+	0105080480	STUD	2	
70+	0105060131	STUD	1	
71+	0013906600	STUD	1	
80	0401140030	PLUG	2	
90	0211140020	GASKET	2	
210	2521110121	MAIN BEARING COVER CP	1	INCLUDES ITEMS W/#
220#	0440250160	OIL SEAL	1	
230#	0600250010	BALL BEARINGS 6205C3	1	
250	2274500301	GOVERNOR GEAR COMPL	1	
260	2054190103	GOVERNOR SLEEVE	1	
265	0108100020	STUD	2	
270	2526360101	OIL GAUGE CP	1	
280	0213160020	GASKET	1	
295	2521700101	SUPPORT (M.B.C)	1	
296	0566000250	CLAMP	1	
297	0110060020	FLANGE BOLT	1	
300	0130060200	BOLT & WASHER ASSY	8	
610	2681300301	CYLINDER HEAD CP	1	INCLUDES ITEMS W/+
620	2531500123	GASKET, HEAD	1	
630	0110080100	FLANGE BOLT	4	
680	2521550203	ROCKER COVER	1	
690	2691600403	GASKET, ROCKER COVER	2	
700	0310060020	DOWEL PIN	2	
710	0110060170	FLANGE BOLT EY45V	4	
720	2521560110	SPACER ASSY, BREATHER	1	INCLUDES ITEMS W/*
721*	2521560103	SPACER, BREATHER	1	
722*	2521600103	LEAF VALVE	1	
723*	2521610103	RETAINER PLATE	1	
724*	2521440113	PLATE	1	
725*	0110060150	FLANGE BOLT EH11	2	
726*	0043506120	SCREW & WASHER	1	
815	2521700201	BRACKET CP (M.B.C)	1	
816	0011308160	BOLT & WASHER ASSY	1	
830	2531600633	GASKET, BREATHER COVER	1	
840	0011308160	BOLT & WASHER ASSY	2	
850	2521800203	RUBBER PIPE	1	
860	0011306160	BOLT AND WASHER ASSY.	2	
870	2529900107	GASKET SET	1	

ROBIN EH-12-2D ENGINE — CRANKSHAFT AND PISTON ASSY.

CRANKSHAFT AND PISTON ASSY.



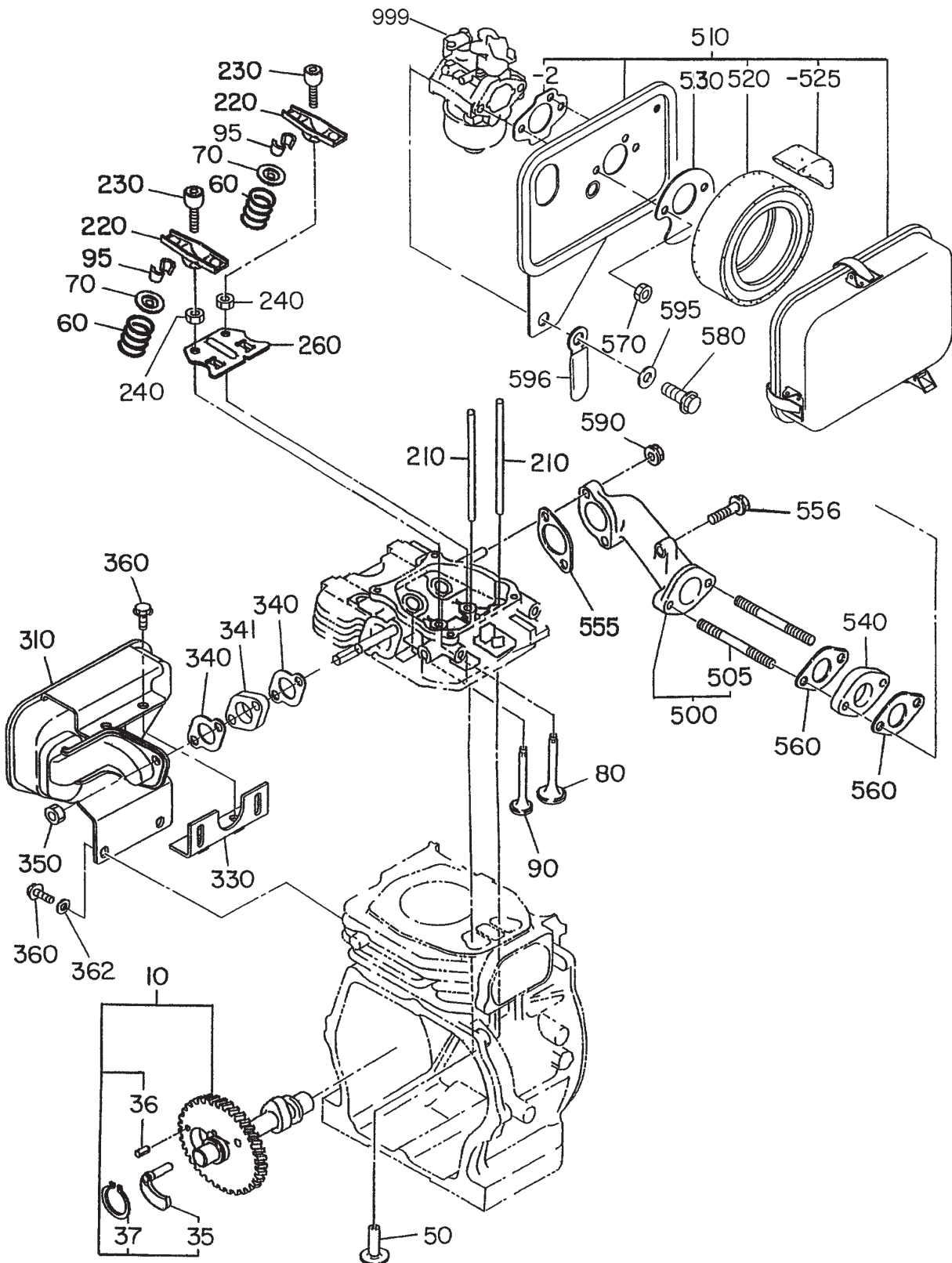
ROBIN EH-12-2D ENGINE — CRANKSHAFT AND PISTON ASSY.

CRANKSHAFT AND PISTON ASSY.

<u>NO.</u>	<u>PART NO.</u>	<u>PART NAME</u>	<u>QTY.</u>	<u>REMARKS</u>
10	EH122R0029	CRANKSHAFT CP	1	
40	0230250110	SPACER T=0.6	1	
40	0230250120	SPACER T=0.8	1	
40	0230250130	SPACER T=1.0	1	
50	0021814000	NUT	1	
60	0032014000	SPRING WASHER	1	
70	0323030010	WOODRUFF KEY	1	
80	0053204201	WOODRUFF KEY	1	
170	0173120010	LOCK NUT	1	
310	2522250110	CONNECTING ROD ASSY	1	INCLUDES ITEMS W/*
320*	2362300103	CONNECTING ROD BOLT	2	
350	2682330103	PISTON PIN	1	
360	2682340103	PISTON STD.	1	
360	2682340203	PISTON O.S. 0.25MM	1	
360	2682340303	PISTON O.S. 0.50MM	1	
370	2522350107	PISTON RING SET STD	1	
370	2522350207	PISTON RING SET 0.25 O.S.	1	
370	2522350307	PISTON RING SET 0.50 O.S.	1	
380	2152500403	CLIP	2	

ROBIN EH-12-2D ENGINE—MUFFLER, AIR CLEANER, CAM & CARB. ASSY.

MUFFLER, AIR CLEANER, CAMSHAFT & CARBURETOR ASSY.



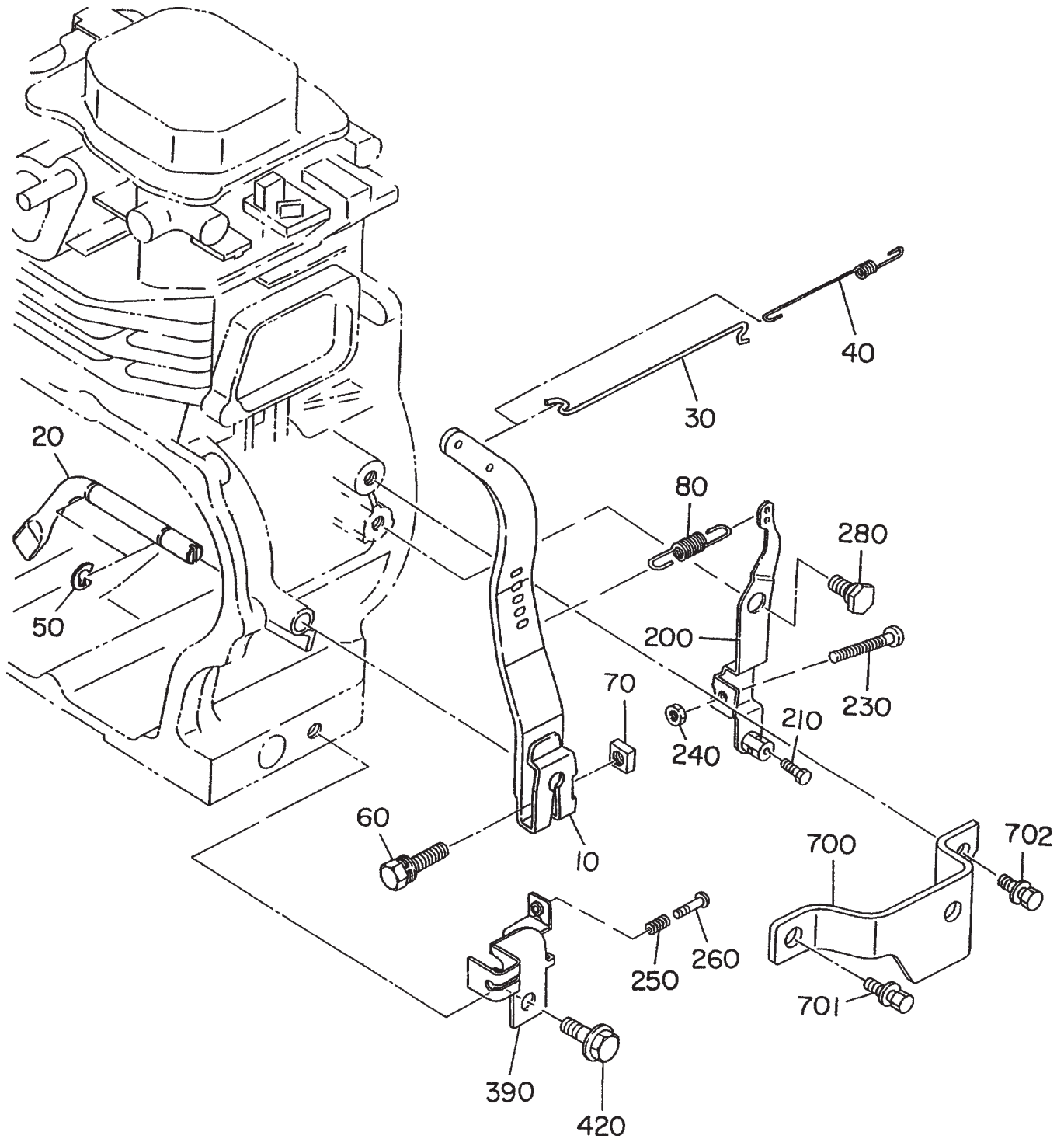
ROBIN EH-12-2D ENGINE —MUFFLER, AIR CLEANER, CAM& CARB. ASSY.

MUFFLER, AIR CLEANER, CAMSHAFT & CARBURETOR ASSY.

<u>NO.</u>	<u>PART NO.</u>	<u>PART NAME</u>	<u>QTY.</u>	<u>REMARKS</u>
10	2533170111	CAMSHAFT CP	1	INCLUDES ITEMS W/*
35	2273640103	RELEASE LEVER	1	
36	0051904100	SPRING PIN	1	
37	0031522000	SNAP RING	1	
50	2393330113	TAPPET	2	
60	2533360103	VALVE SPRING	2	
70	13209KAO40	RETAINER VALVE SPRING	2	
80	2683340103	INTAKE VALVE	1	
90	2683350103	EXHAUST VALVE	1	
95	13210KAO31	COLLECT VALVE	4	
210	2683530103	PUSH ROD	2	
220	26136001A3	ROCKER ARM	2	
230	2693580103	BOLT, PIVOT	2	
240	0170060090	NUT	2	
260	2693650103	GUIDE PLATE	1	
310	2523040111	MUFFLER CP	1	
330	2523700111	BRACKET CP	1	
340	2533520103	GASKET, MUFFLER	2	
341	2523650103	SPACER, EXHAUST	1	
350	0170080030	NUT	2	
360	0011308160	BOLT & WASHER ASSY	4	
362	0031108000	WASHER	2	
500	2523300311	INTAKE PIPE CP	1	INCLUDES ITEMS W/\$
505\$	0105060230	STUD	2	
510	2523271110	AIR CLEANER ASSY	1	INCLUDES ITEMS W/%
510-2%	2263272008	GASKET (AIR CLEANER)	1	
520%	2523260107	ELEMENT, SET	1	
525%	2523261108	ELEMENT	1	
530	2523650203	PLATE, AIR CLEANER	1	
540	1063291203	INSULATOR	1	
555	2273590103	GASKET (INSULATOR)	1	
556	0011406400	BOLT AND WASHER ASSY	1	
560	2363590303	GASKET 2 (INSULATOR)	2	
570	0176060020	SELF LOCK NUT	2	
580	0011308180	BOLT & WASHER ASSY	1	
590	0023706000	FLANGE NUT	2	REPLACES 0023806000
595	0200080080	WASHER	1	
596	0566000170	CLAMP	1	
999	2526253110	CARBURETOR ASSY	1	

ROBIN EH-12-2D ENGINE — GOVERNOR ASSY.

GOVERNOR ASSY.



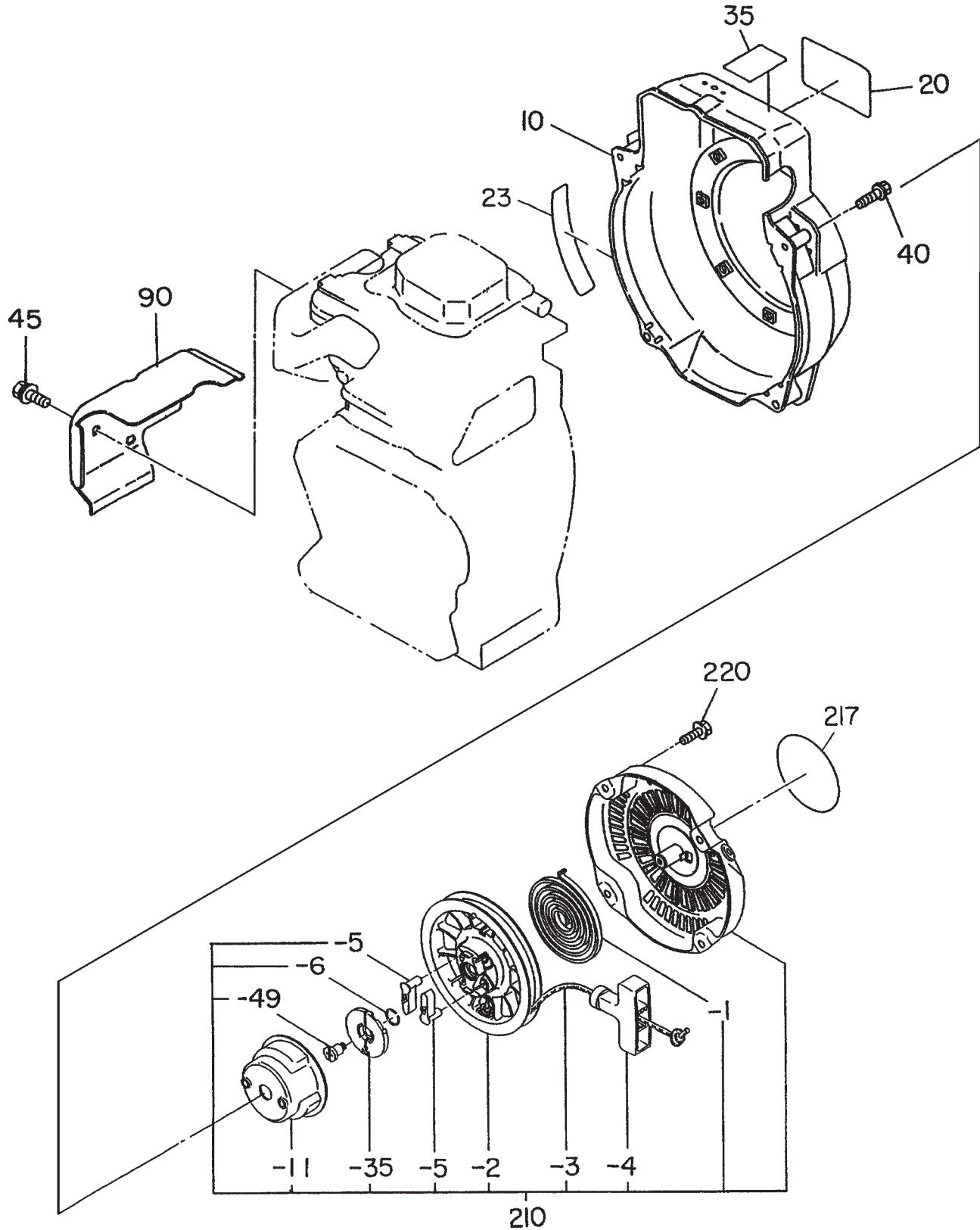
ROBIN EH-12-2D ENGINE —GOVERNOR ASSY.

GOVERNOR ASSY.

<u>NO.</u>	<u>PART NO.</u>	<u>PART NAME</u>	<u>QTY.</u>	<u>REMARKS</u>
10	2524230303	GOVERNOR LEVER CP	1	
20	2264230207	GOVERNOR SHAFT	1	REPLACES 2274220103
30	2544270101	GOVERNOR ROD CP	1	
40	2544280103	ROD SPRING	1	
50	0031306000	CLIP	2	
60	0011406300	BOLT & WASHER ASSY	1	
70	0186060020	NUT	1	
80	2524250323	GOVERNOR SPRING	1	
200	2524340220	SPEED CONTROL ASSY	1	
210	0116040030	BOLT	1	
230	0043105250	SCREW, PANHEAD	1	
240	0021705000	NUT	1	
250	2054600323	CONTROL SPRING	1	
260	0140040020	SCREW	1	REPLACES 0043104250
280	2264310101	LINK PIVOT	1	
390	2524420213	WIRE BRACKET	1	
420	0110060030	FLANGE BOLT	1	
700	2524280111	PROTECTOR CP, GOVERNOR	1	
701	0011308160	BOLT & WASHER ASSY	1	
702	0011306200	BOLT & WASHER ASSY	1	

ROBIN EH-12-2D ENGINE —RECOIL STARTER AND BLOWER ASSY.

RECOIL STARTER AND BLOWER ASSY.



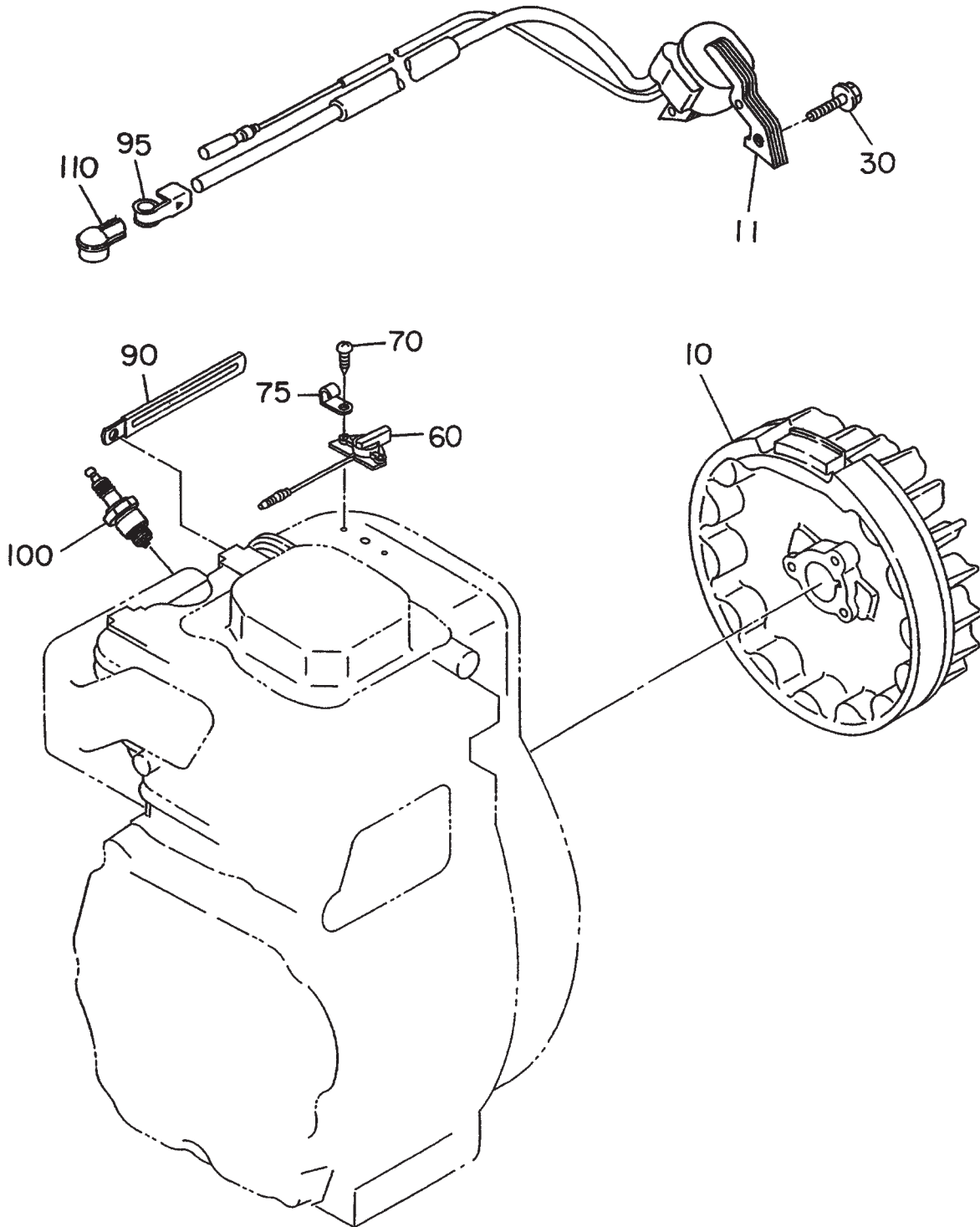
ROBIN EH-12-2D ENGINE —RECOIL STARTER AND BLOWER ASSY.

RECOIL STARTER AND BLOWER ASSY.

<u>NO.</u>	<u>PART NO.</u>	<u>PART NAME</u>	<u>QTY.</u>	<u>REMARKS</u>
10	2525165211	BLOWER HOUSING CP 2	1	
20	2069170103	LABEL, MIKASA MARK	1	
35	2689180203	LABEL, ENGINE NAME	1	
40	0011406550	BOLT & WASHER ASSY	4	
45	0110060140	FLANGE BOLT	2	
90	2525270213	HEAD COVER	1	
210	2685020100	RECOIL STARTER ASSY	1	INCLUDES ITEMS W/*
210-1*	2705011508	SPIRAL SPRING	1	
210-2*	2695012008	REEL	1	
210-3*	2695011008	STARTER ROPE	1	
210-4*	2615010008	STARTER KNOB	1	
210-5*	2705012508	RATCHET	2	
210-6*	2275013108	FRICTION SPRING	1	
210-1*	2685014508	STARTER PULLEY	1	
210-3*	2705026108	RATCHET GUIDE	1	
210-49*	2275015208	SET SCREW	1	
220	0110060050	FLANGE BOLT	4	REPLACES 0110060010

ROBIN EH-12-2D ENGINE — MAGNETO ASSY.

MAGNETO ASSY.



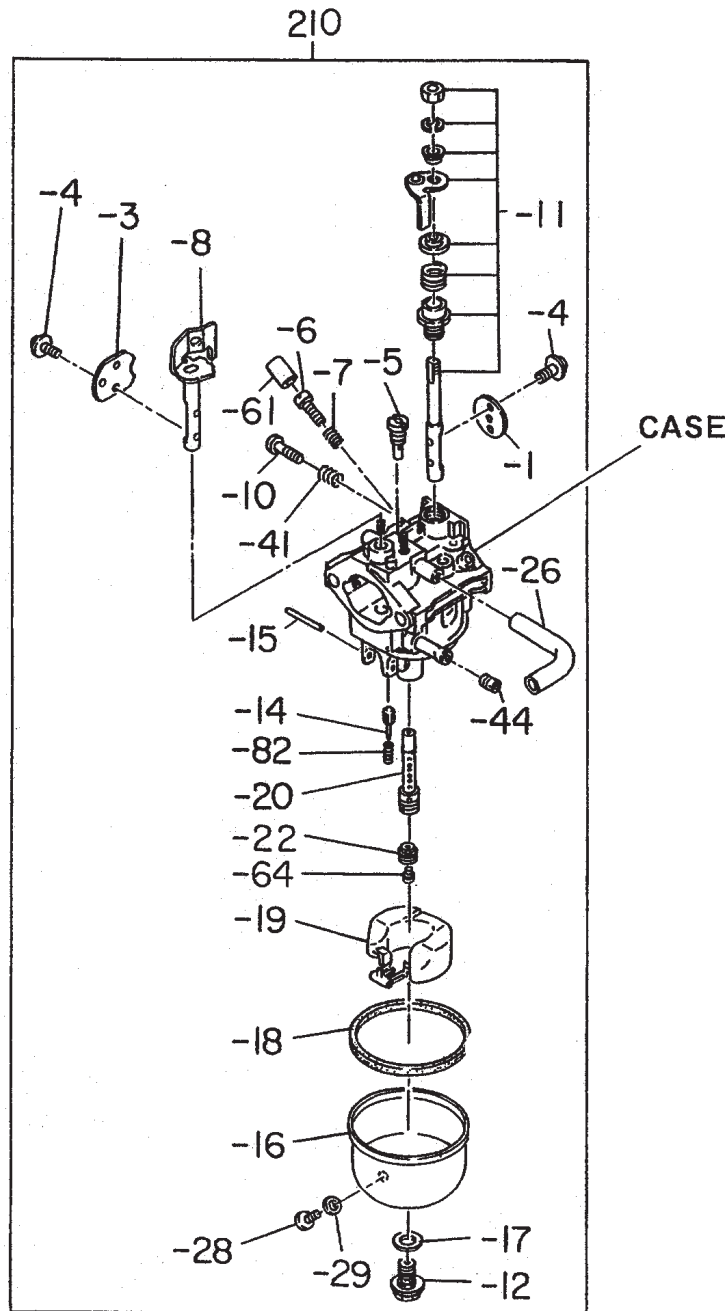
ROBIN EH-12-2D ENGINE — MAGNETO ASSY.

MAGNETO ASSY.

<u>NO</u>	<u>PART NO</u>	<u>PART NAME</u>	<u>QTY.</u>	<u>REMARKS</u>
10	2527933101	FLYWHEEL CP	1	
11	2697943001	IGNITION COIL CP	1	
30	0011406250	BOLT & WASHER ASSY	2	
60	0660000371	STOP SWITCH ASSY (ON-OFF)	1	
70	0150040090	TAPPING SCREW	2	
75	0566030010	CLAMP	1	
90	0566000250	CLAMP	1	
95	0659000010	SPARK PLUG CLIP	1	REPLACES 0655000100
100	0650140100	SPARK PLUG	1	REPLACES 0650140100
110	2307510113	SPARK PLUG CAP	1	

ROBIN EH-12-2D ENGINE — CARBURETOR ASSY.

CARBURETOR ASSY.



ROBIN EH-12-2D ENGINE — CARBURETOR ASSY.

CARBURETOR ASSY.

<u>NO</u>	<u>PART NO</u>	<u>PART NAME</u>	<u>QTY.</u>	<u>REMARKS</u>
210	2526253120	FLYWHEEL COMPLETE	1	INCLUDES ITEMS W/*
210-1*	2526253508	THROTTLE VALVE	1	
210-3*	2366252808	CHOKE VALVE	1	
210-4*	2376245108	SCREW	4	
210-5*	2166230308	PILOT JET	1	
210-6*	2376243508	PILOT SCREW	1	
210-7*	2306244608	SPRING	1	
210-8*	2526252108	CHOKE SHAFT	1	
210-10*	2466243508	ADJUST SCREW	1	
210-11*	1616253008	THROTTLE SHAFT	1	
210-12*	2366245108	BOLT	1	
210-14*	1616235208	NEEDLE	1	
210-15*	2146251508	PIN	1	
210-16*	2366255208	FLOAT CHAMBER BODY	1	
210-17*	2366245008	PACKING	1	
210-18*	2366254008	PACKING, CHAMBER	1	
210-19*	2366250508	FLOAT	1	
210-20*	2526244008	MAIN NOZZLE	1	
210-22*	2266240308	MAIN JET	1	
210-26*	1616235308	HOSE	1	
210-28*	2366235008	SCREW	1	
210-29*	2366254108	PACKING	1	
210-41*	2096244508	SPRING	1	
210-44*	1616240008	GUIDE HOLDER	1	
210-61*	2466255108	CAP	1	
210-64*	2356242508	MAIN JET	1	
210-82*	2366244508	SPRING	1	