

PARTS AND OPERATION MANUAL

STOW

A DIVISION OF MULTIQUIP INC.

**PLASTER/MORTAR
MIXERS
MS-40H
(Steel-Drum Hydraulic)**

Revision #1 (05/17/02)

MS-40H HYDRAULIC MIXER— SUGGESTED SPARE PARTS

MS40H 1 TO 3 UNITS

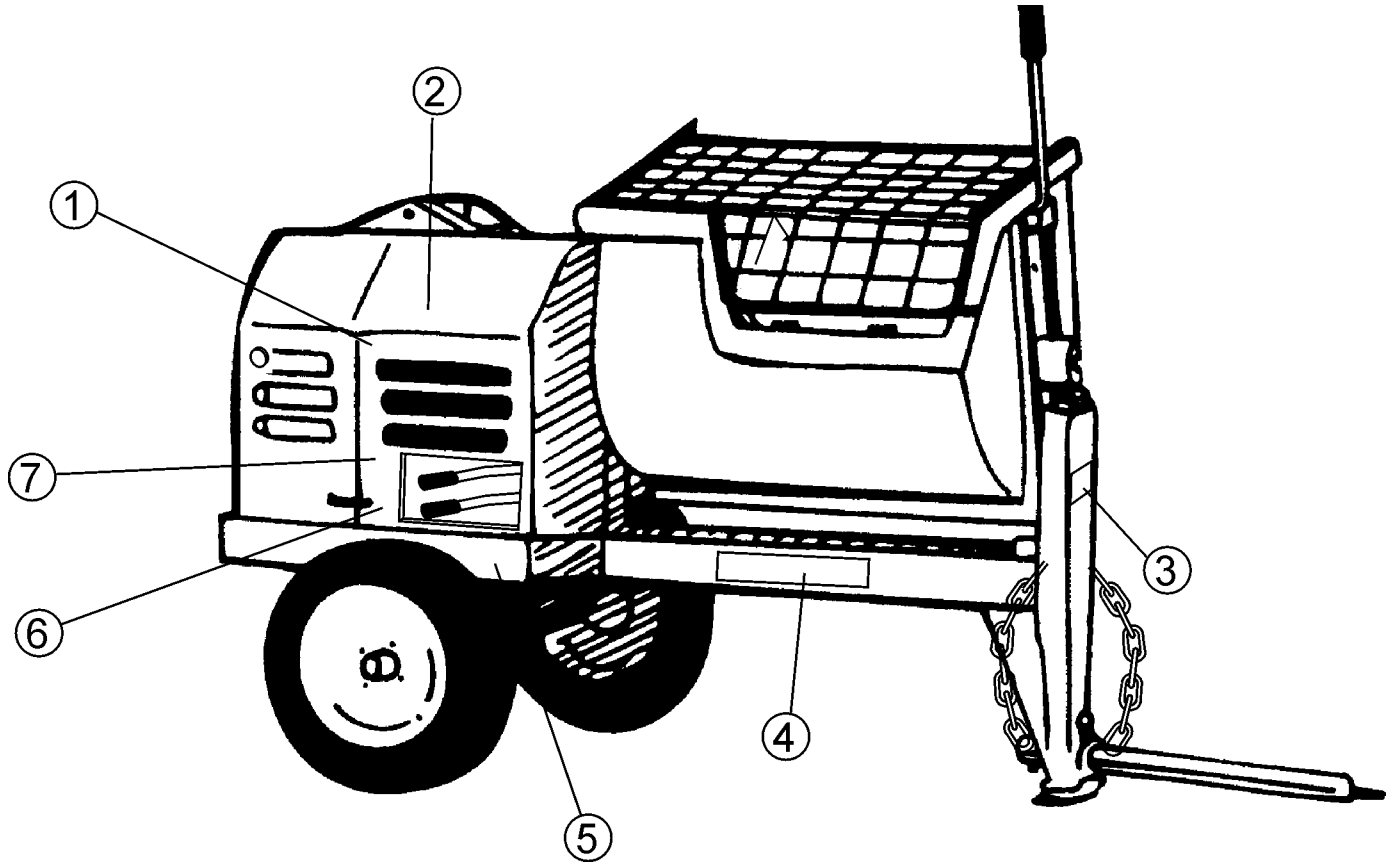
Qty.	P/N	Description
6	491010	RUBBER LATCH ASSY.
1	EM200293	PADDLE ARM TOW SIDE
1	EM200294	PADDLE ARM CENTER TOW SIDE
1	EM200295	PADDLE ARM CENTER ENGINE SIDE
1	EM200296	PADDLE ARM ENGINE SIDE
3	EM200863	RUBBER BLADE KIT (STEEL DRUM)
2	EM200297	U-BOLT
2	EM200268	U-BOLT
2	3530	PADDLE SHAFT, SEAL KIT
2	EM902153	BEARING, PADDLE SHAFT
3	3215	CONNECTOR BOLT

MS40H 5 TO 10 UNITS

Qty.	P/N	Description
10	491010	RUBBER LATCH ASSY.
2	EM200293	PADDLE ARM TOW SIDE
2	EM200294	PADDLE ARM CENTER TOW SIDE
2	EM200295	PADDLE ARM CENTER ENGINE SIDE
2	EM200296	PADDLE ARM ENGINE SIDE
6	EM200863	RUBBER BLADE KIT (STEEL DRUM)
4	EM200297	U-BOLT
4	EM200268	U-BOLT
4	3530	PADDLE SHAFT, SEAL KIT
4	EM902153	BEARING, PADDLE SHAFT
5	3215	CONNECTOR BOLT

MS-40H HYDRAULIC MIXER — NAME PLATE AND DECALS

NAME PLATE AND DECALS



MS-40H HYDRAULIC MIXER — NAME PLATE AND DECALS

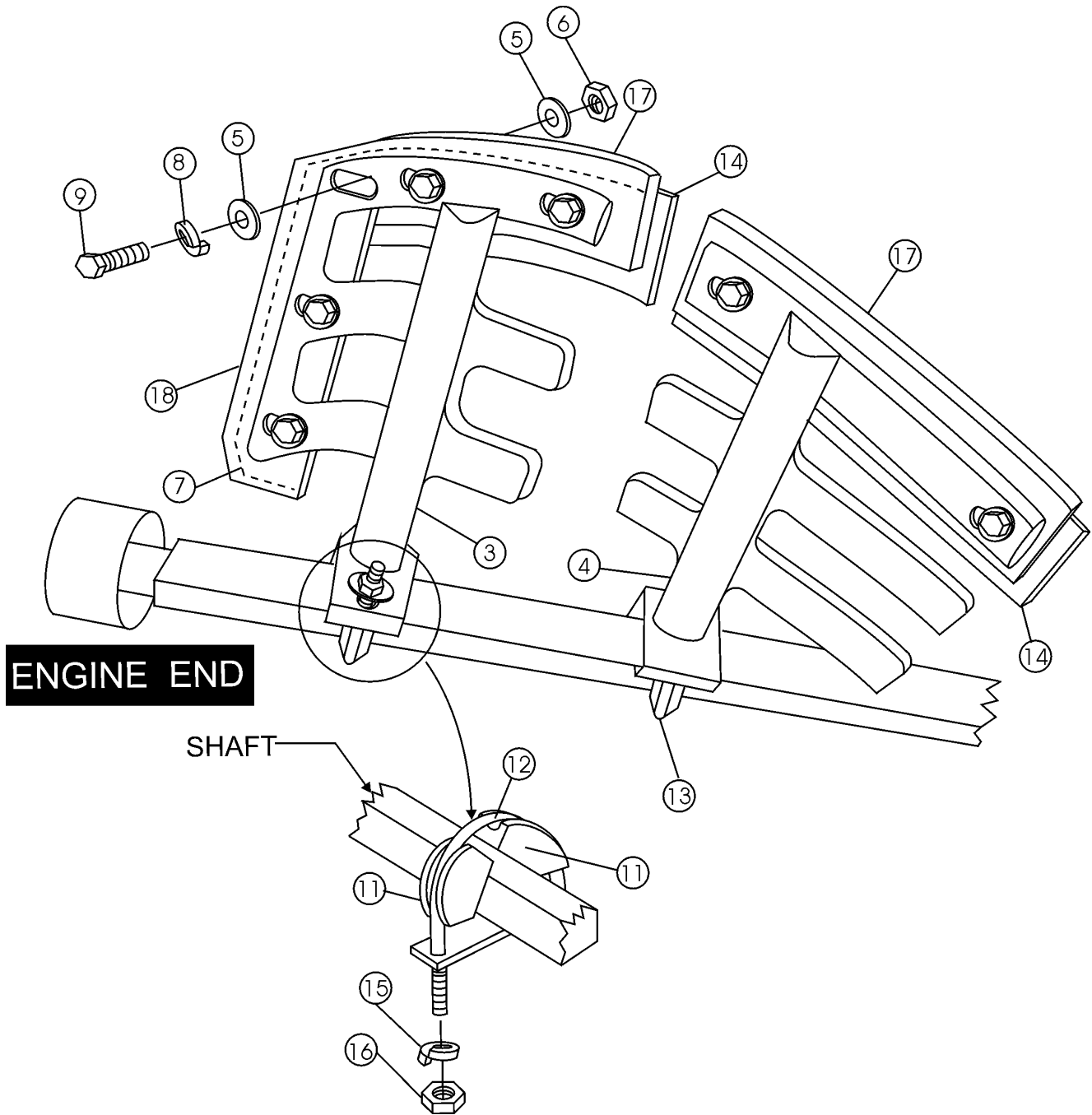
NAME PLATE AND DECALS

<u>NO</u>	<u>PART NO</u>	<u>PART NAME</u>	<u>QTY.</u>	<u>REMARKS</u>
1*	EM948423	DECAL : CAUTION	2	
2*	924801	DECAL : SAFETY INSTRUCTIONS	1	
3		PLATE, SERIAL NO.....	1	CONTACT MQ PARTS DEPT. W/MODEL & S/N
4*	TBD	DECAL : MQ STOW	1	
5*	DCL151	DECAL : INSPECT TOWING	2	
6*	13238	DECAL : DUMP CONTROL	1	
7*	511764	DECAL : DRIVE CONTROL	1	

SEE DECAL ILLUSTRATIONS ON PAGE 6.

MS-40H HYDRAULIC MIXER — ENGINE END PADDLE ASSY.

ENGINE END PADDLE ASSY.



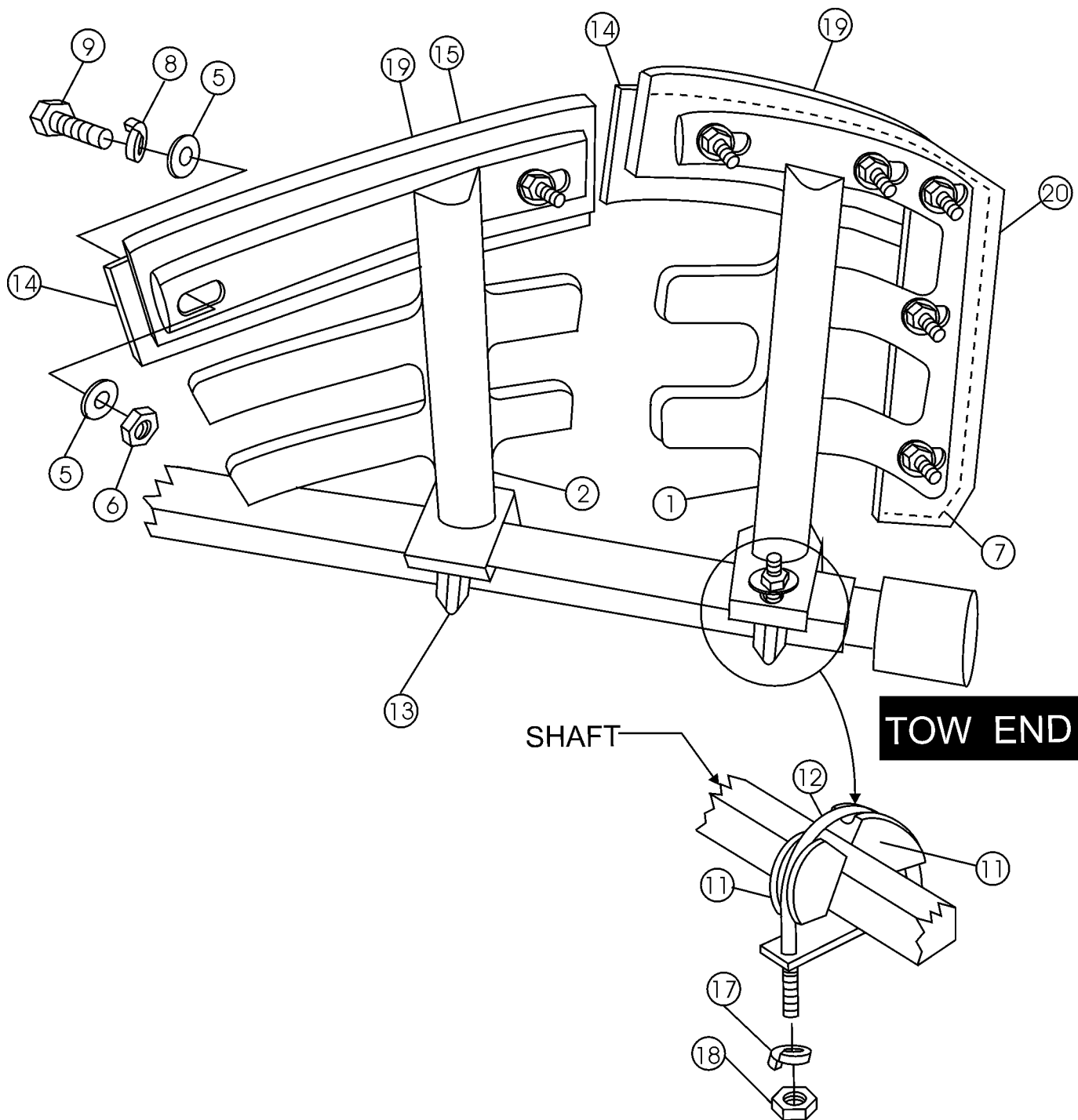
MS-40H HYDRAULIC MIXER — ENGINE END PADDLE ASSY.

ENGINE END PADDLE ASSY.

<u>NO</u>	<u>PART NO</u>	<u>PART NAME</u>	<u>QTY.</u>	<u>REMARKS</u>
3	EM200296	PADDLE ARM ENGINE END	1	
4	EM200295	PADDLE ARM CENTER ENGINE END	1	
5	0300B	FLAT WASHER 5/16	28	
6	0161D	HEX NUT 5/16	14	
7*#	EM203433	END BACK-UP BLADE	2	
8	0161C	LOCK WASHER 5/16	14	
9	1207	HHCS 5/16-18 1 3/4"	14	
11	EM200292	PADDLE ARM INSERT CASTING	8	
12	EM200297	END PADDLE U-BOLT	2	
13	EM200268	CENTER PADDLE J-BOLT	2	
14*#	EM203432	CENTER BACK-UP BLADE	4	
15	5054A	LOCK WASHER 1/2"	8	
16	968011	HEX NUT 1/2-13	8	
17*	EM200212	SIDE RUBBER BLADE	4	
18*	EM200213	END RUBBER BLADE	2	
	EM200863	RUBBER BLADE KIT (STEEL DRUM ONLY)	1	INCLUDES ITEMS W/* AND MTG. HDW.

MS-40H HYDRAULIC MIXER — TOW END PADDLE ASSY.

TOW END PADDLE ASSY.



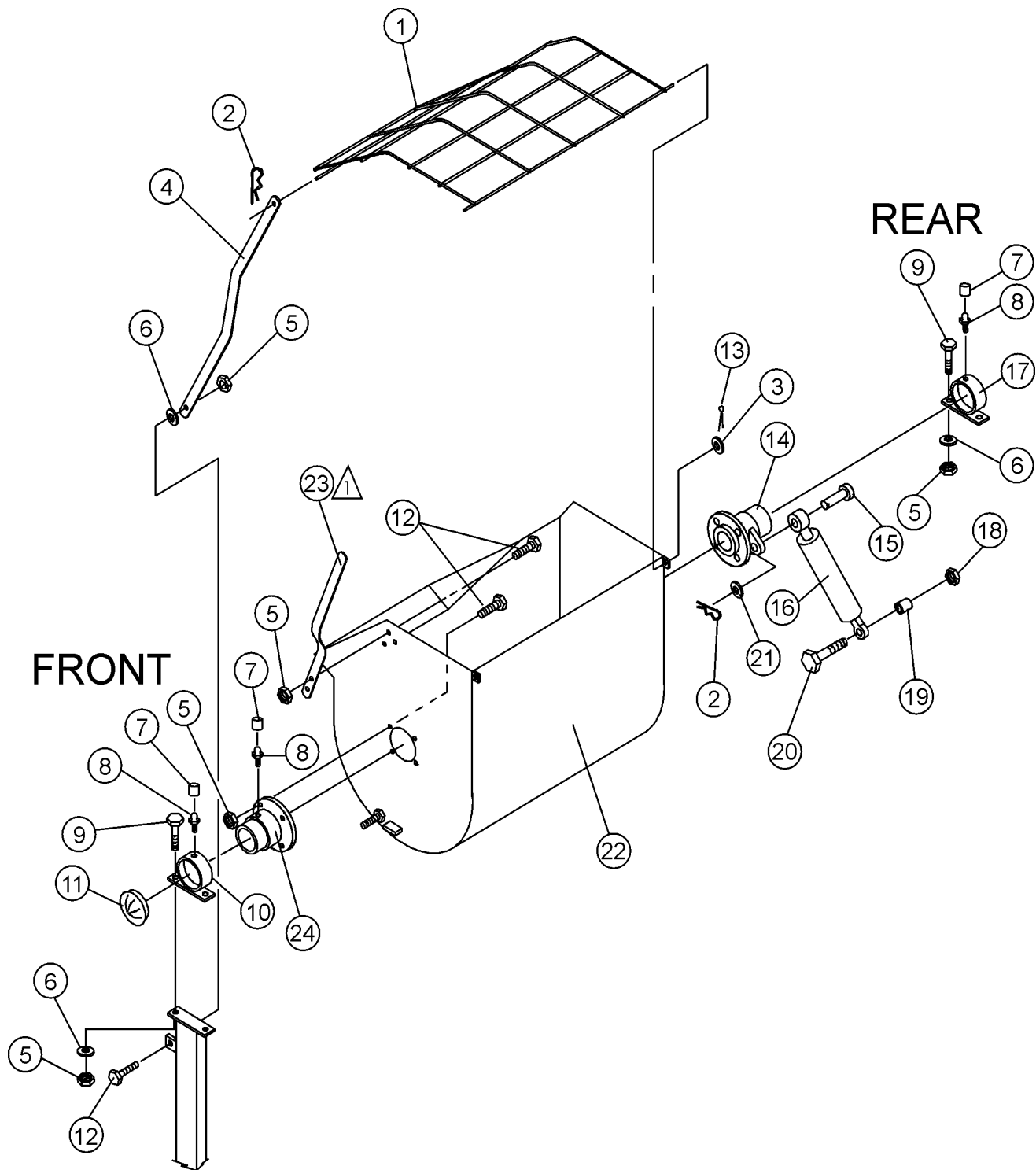
MS-40H HYDRAULIC MIXER — TOW END PADDLE ASSY.

TOW END PADDLE ASSY.


<u>NO</u>	<u>PART NO</u>	<u>PART NAME</u>	<u>QTY.</u>	<u>REMARKS</u>
1	EM200293	PADDLE ARM TOW END	1	
2	EM200294	PADDLE ARM CENTER TOW END	1	
5	0300B	FLAT WASHER 5/16	28	
6	0161D	HEX NUT 5/16	14	
7*#	EM203433	END BACK-UP BLADE	2	
8	0161C	LOCK WASHER 5/16	14	
9	1207	HHCS 5/16-18 1 3/4"	14	
11	EM200292	PADDLE ARM INSERT CASTING	8	
12	EM200297	END PADDLE U-BOLT	2	
13	EM200268	CENTER PADDLE U-BOLT	2	
14*#	EM203432	CENTER BACK-UP BLADE	4	
17	5054A	LOCL WASHER 1/2"	8	
18	968011	HEX NUT 1/2-13	8	
19*	EM200212	SIDE RUBBER BLADE	4	
20*	EM200213	END RUBBER BLADE	2	
	EM200863	RUBBER BLADE KIT (STEEL DRUM ONLY)	1	INCLUDES ITEMS W/* AND MTG. HDW.
	EM203028	HDW. KIT, (FOR RUBBER BLADES)	1	INCLUDED IN BLADE KITS

MS-40H HYDRAULIC MIXER — STEEL MIXING DRUM ASSY.

STEEL MIXING DRUM ASSY.



NOTES:

 MANUAL DUMP HANDLE
DO NOT USE WITH HYDRAULIC
DUMP.

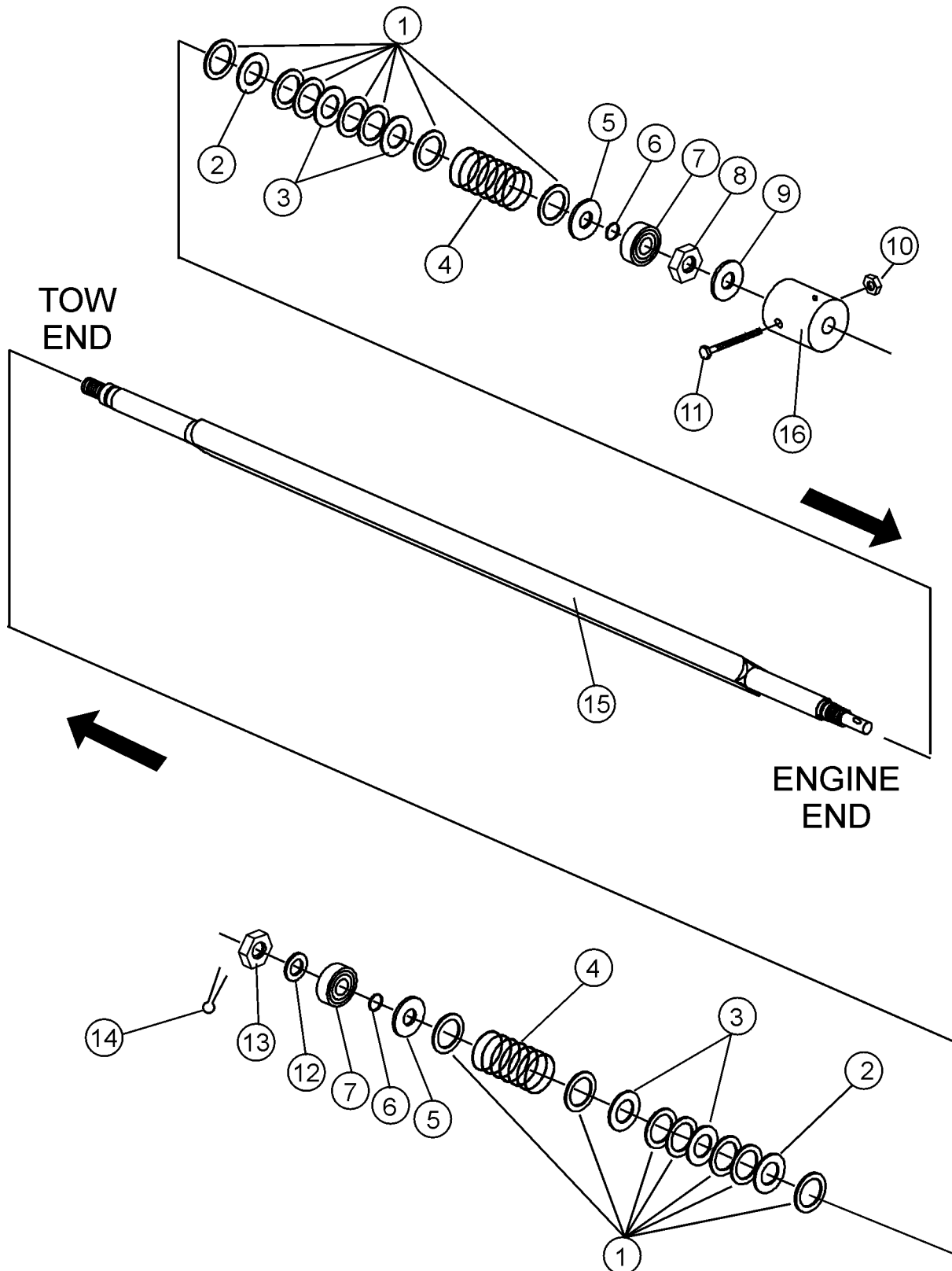
MS-40H HYDRAULIC MIXER — STEEL MIXING DRUM ASSY.

STEEL MIXING DRUM ASSY.

<u>NO</u>	<u>PART NO</u>	<u>PART NAME</u>	<u>QTY.</u>	<u>REMARKS</u>
1	203449	MOVEABLE GRATE	1	
2	7170	CLIP	1	
3	13211	FLAT WASHER 1/2 USS	1	
4	13276Y	GRATE LATCH BAR	1	
5	10176	LOCK NUT 1/2-13	13	
6	0447	FLAT WASHER 1/2	5	
7	1162A	CAP, ZERK FITTING	4	
8	2621	ZERK FITTING	4	
9	3242	SCREW, HHCS 1/2-13 X 1-3/4	4	
10	13260Y	FRONT DUMP SUPPORT BRACKET	1	
11	3249	DUST CAP	1	
12	5218	SCREW HHCS 12-13 X 1-1/2	9	
13	924015	COTTER KEY	2	
		WITHOUT HYDRAULIC DUMP		
14	511852Y	BEARING HOUSING REAR	1	
		WITH HYDRAULIC DUMP		
14	3291Y	BEARING HOUSING REAR	1	
		MANUAL DUMP		
15	13228	CLEVIS PIN (W/DUMP)	1	
16	3327	DUMP CYLINDER	1	
17	13259Y	REAR DUMP SUPPORT BRACKET	1	
18	3413	LOCK NUT 1-8	1	
19	13286	SPACER	1	
20	13285	SCREW, HHCS 1-8 X 8	1	
21	8151	FLAT WASHER	1	
22	512245Y	STEEL DRUM W/GRATES	1	S/N GE210001
23	EM201537Y	MANUAL DUMP HANDLE	1	DO NOT USE WITH HYDRAULIC DUMP
24	3291	YBEARING HOUSING FRONT	1	S/N GE210001

MS-40H HYD. MIXER — PADDLE SHAFT ASSY.

STEEL PADDLE SHAFT ASSY.



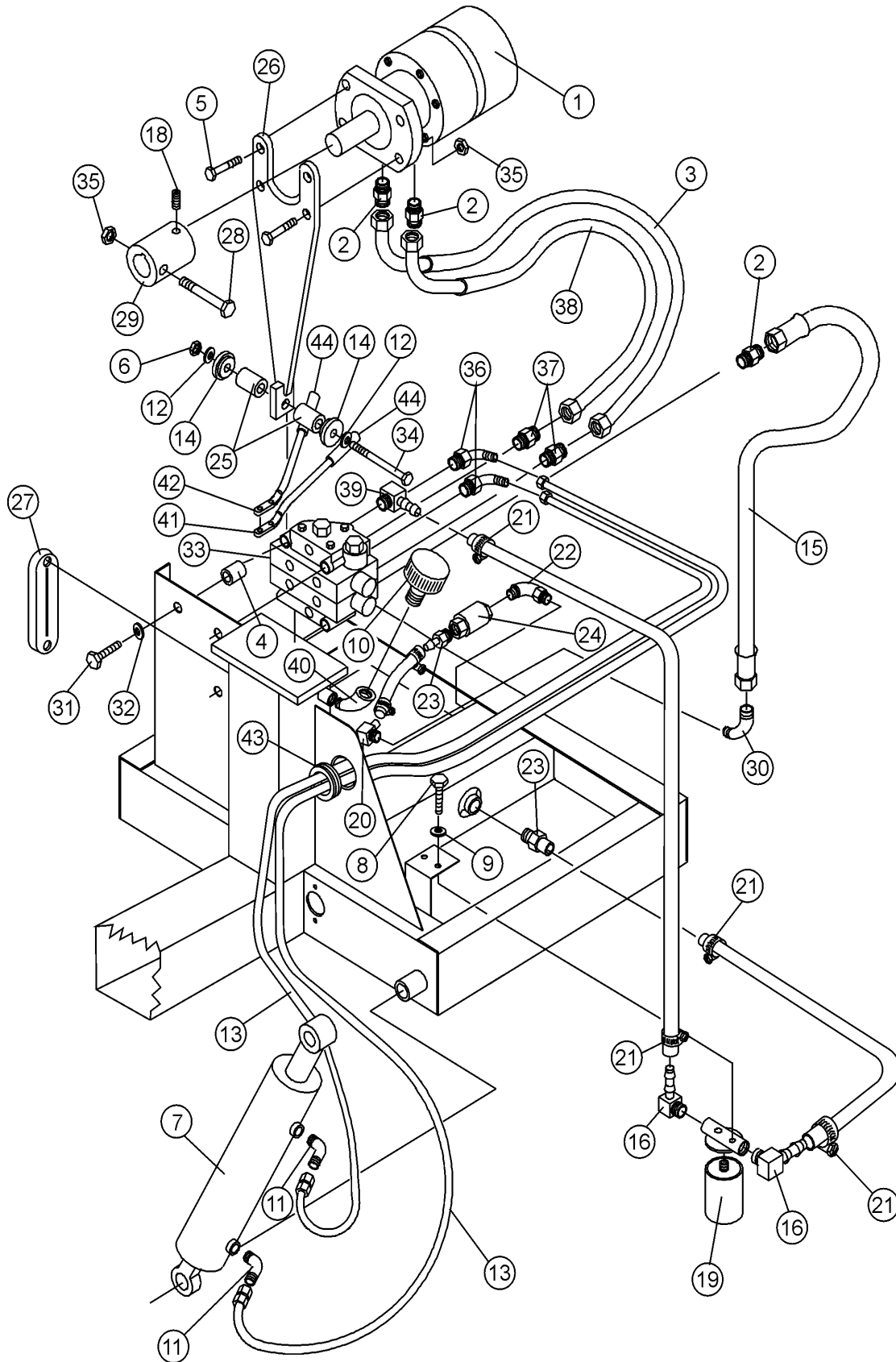
MS-40H HYD. MIXER — PADDLE SHAFT ASSY.

STEEL PADDLE SHAFT ASSY.

<u>NO</u>	<u>PART NO</u>	<u>PART NAME</u>	<u>QTY.</u>	<u>REMARKS</u>
1	3061	SPACER	14	
2*	3494	OUTER SEAL	2	
3*	3019	INNER SEAL	4	
4	3024	SPRING	2	
5	13002	BEARING SEAL	2	
6	3131	O-RING	2	
7	EM902153	BALL BEARING	2	
8	3347	SPECIAL NUT	1	
9	13108	SPACER	1	
10	13156	COUPLER	1	
11	3215	HHCS 1/2-13 X 3.1/2"	1	
12	3047	SPACER	1	
13	8164	CASTLE NUT 1-20	1	
14	5028B	COTTER PIN	1	
15	13257	PADDLE SHAFT	1	
16	13156	DRIVE COUPLER	1	
	3530	PADDLE SHAFT SEAL KIT	1 INCLUDES ITEMS W/*

MS-40H HYDRAULIC MIXER — HYDRAULIC ASSY.

HYDRAULIC ASSY.



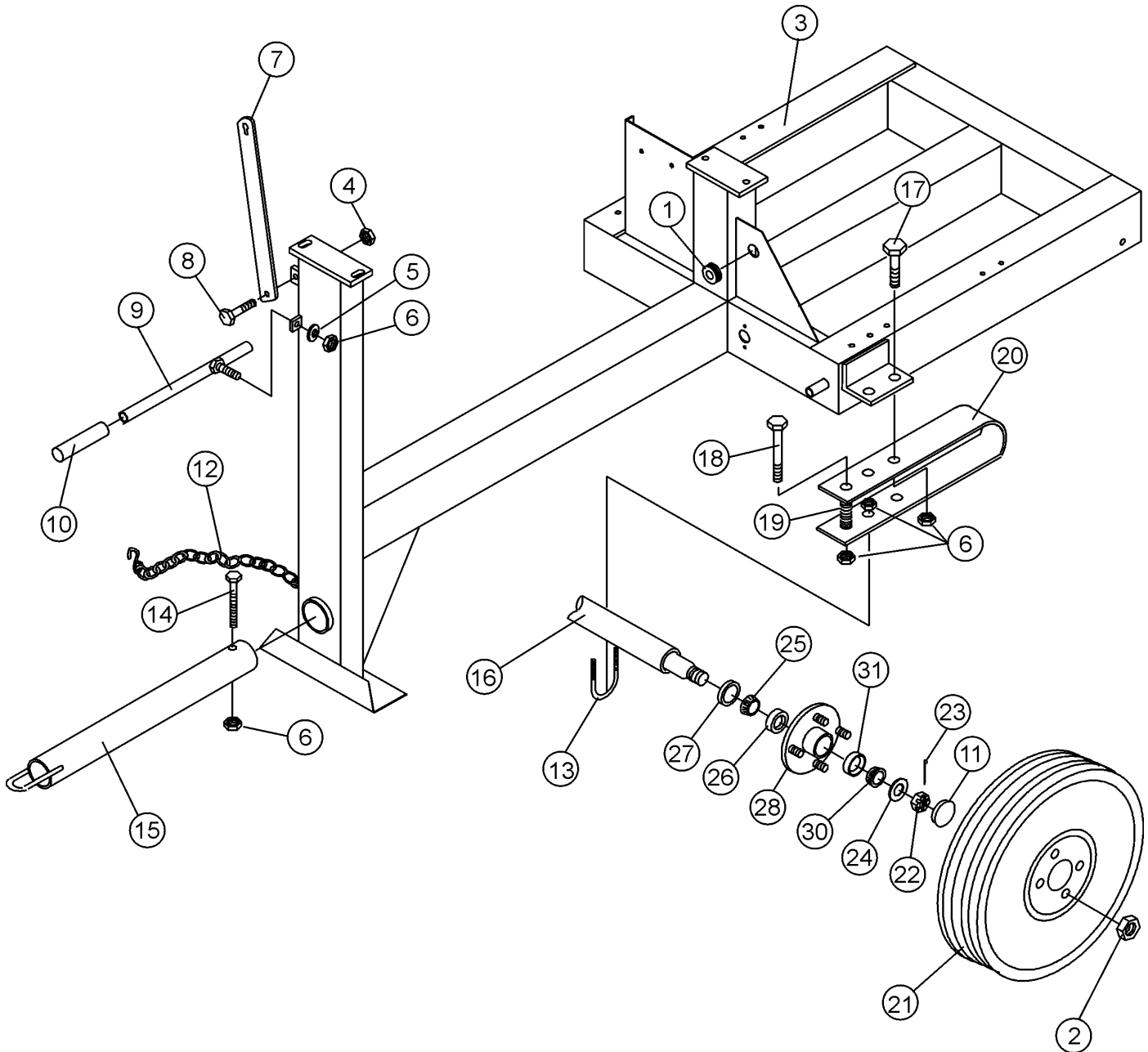
MS-40H HYDRAULIC MIXER — HYDRAULIC ASSY.

HYDRAULIC ASSY.

<u>NO</u>	<u>PART NO</u>	<u>PART NAME</u>	<u>QTY.</u>	<u>REMARK</u>
1	3323	HYDRAULIC MOTOR	1	
2	3365	FITTING, STRAIGHT W/O-RING	3	
3	13243	MOTOR HOSE, 16"	1	
4	3231	SPACER	3	
5	3242	HHCS 1/2-13 X 1.3/4"	4	
6	10133	LOCK NUT 3/8-16	1	
7	3327	DUMP CYLINDER	1	WITH DUMP (HYDRAULIC DUMP CYLINDER)
8	0131A	HHCS 1/4-20 X 3/4"	2	
9	0181B	LOCK WASHER 1/4"	2	
10	3353	OIL FILLER CAP	1	
11	3369	FITTING, 90 DEG.	2	WITH DUMP (HYDRAULIC DUMP CYLINDER)
12	10136	FLAT WASHER 3/8"	2	
13	13198	CYLINDER HOSE	2	WITH DUMP (HYDRAULIC DUMP CYLINDER)
14	13153	CAP	2	
15	13196	VALVE PRESSURE HOSE	1	GAS ENGINE ONLY
16	3367	FITTING, 90 DEG. 3/4" HOSE BARB	2	
17	3462	TANK RETURN HOSE	3	
18	0857	SHSS 5-16-24 X 1/2"	2	
19	8051	OIL FILTER ASSY.	1	
19	8163	OIL FILTER	1	
20	3461	FITTING, 45 DEG. 3/4" HOSE BARB	1	
21	3333	HOSE CLAMP	6	
22	13219	FITTING 90 DEG.	1	
23	13220	FITTING	2	
24	13210	STRAINER	1	
25	13213	URETHANE SPRING	2	
26	13147	MOTOR TORQUE ARM	1	
27	3336	OIL SIGHT GAUGE	1	
28	3215	HHCS 1/2-13 X 1.3/4"	1	
29	13156	DRIVE COUPLER	1	
30	3322	FITTING, 90 DEG. W/O-RING	1	GAS ENGINE ONLY
31	1284	HHCS 3/8-16 X 1.3/4"	3	
32	0166A	LOCK WASHER 3/8"	3	
33	3316	VALVE ASM	1	WITH DUMP (HYDRAULIC DUMP CYLINDER)
34	13217	HHCS 3/8-16 X 6"	1	
35	10176	LOCK NUT 1/2-13	5	
36	3321	FITTING, 45 DEG. W/O-RING	2	WITH DUMP (HYDRAULIC DUMP CYLINDER)
37	3314	FITTING, STRAIGHT W/O-RING	2	
38	13244	MOTOR HOSE 22"	1	
39	13216	FITTING 90 DEG W/O-RING	1	
40	510263	FITTING 90 DEG STRAIGHT EL	1	
41	13225	HANDLE	1	
42	13226	HANDLE	1	
43	13212	GROMMET	1	
44	3407	KNOB	2	
	10477	SEAL KIT (DUMP CYLINDER)	1	

MS-40H HYDRAULIC MIXER — FRAME 3 ASSY.

FRAME 3 ASSY.
5 LUG HUB AND WHEEL (1-1/16 AXLE SPINDLE)
S/N GE21000 -



MS-40H HYDRAULIC MIXER — FRAME 3 ASSY.

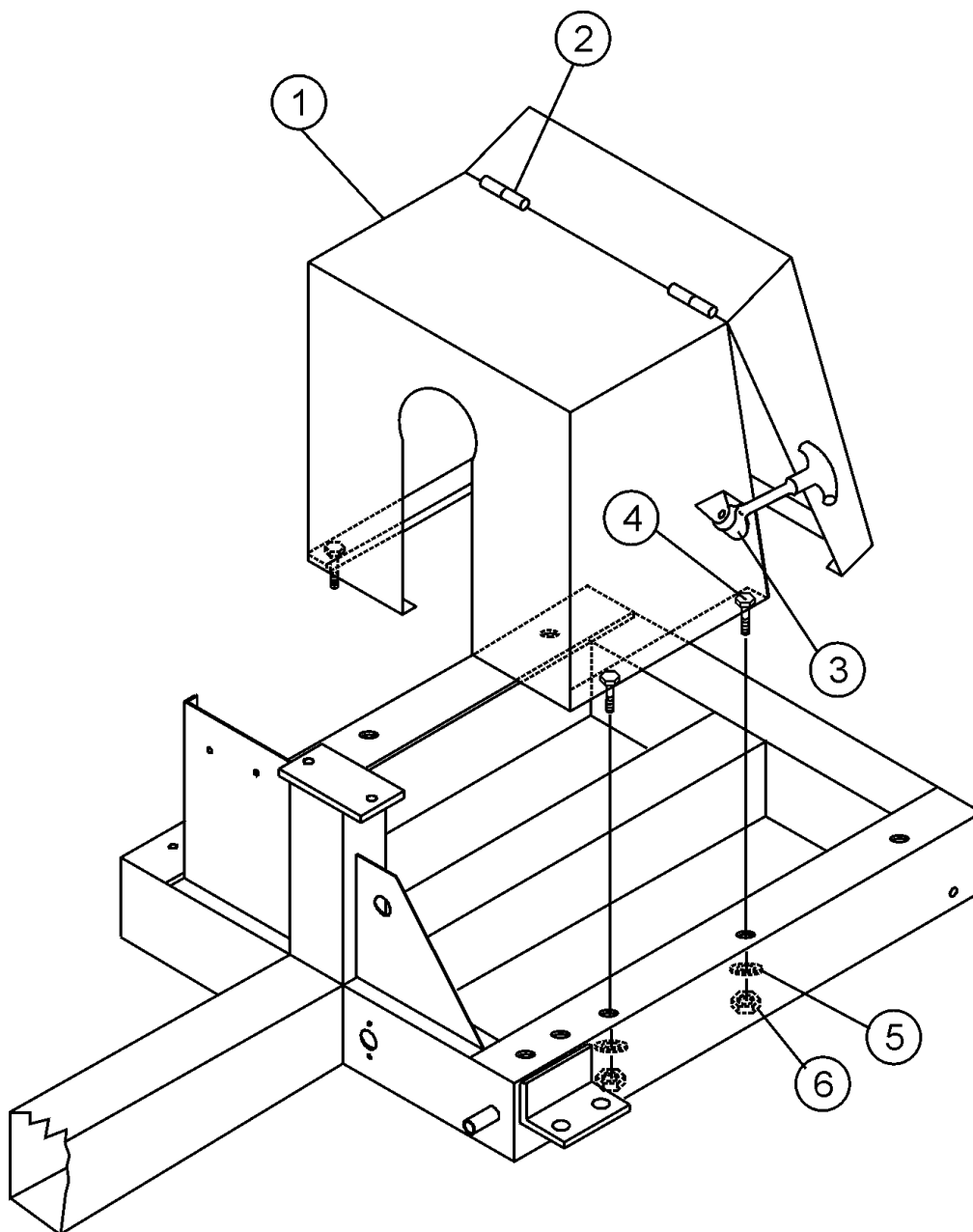
FRAME 3 ASSY.

5 LUG HUB AND WHEEL (1-1/16 AXLE SPINDLE)

<u>NO</u>	<u>PART NO</u>	<u>PART NAME</u>	<u>QTY.</u>	<u>REMARK</u>
1	13212	GROMMET	1 WITH DUMP (HYDRAULIC DUMP CYL.)
2	EM941280	LUG NUT	8	
3	13365Y	MAIN FRAME	1	
4	10133	LOCK NUT 3/8-16	1	
5	0447	FLAT WASHER 1/2"	1	
6	10176	LOCK NUT 1/2-13	12	
7	511493Y	GRATE LATCH	1	
8	1023	HHCS 3/8-16 X 1.1/4"	1	
9	13280Y	DRUM LOCK LEVER	1 W/O DUMP (MANUAL ONLY)
10	3102Y	HANDLE GRIP	1 W/O DUMP (MANUAL ONLY)
11	EM941278	DUST CAP	2	
12	3148	SAFETY CHAIN ASM	1	
13	3028	U-BOLT	2	
14	3215	HHCS 1/2-13 X 3.1/2"	1	
15	HLC-1	TOW BAR (LOOP)	1	
15	HPC-1	TOW BAR (1 " PIN)	1	
15	HBC-1	TWO BAR (BALL HITCH 2 -INCH)	1	
16	511699	AXLE	1	
17	5218	HHCS 1/2-13 X 1.1/2"	4	
18	3043	HHCS 1/2-13 X 6"	2	
19	3076	AXLE SPRING	2	
20	3018	LEAF SPRING	2	
21	19045	WHEEL & TIRE	2	
22	EM968302	CASTLE NUT	2	
23	0183	COTTER PIN	2	
24	EM923161	FLAT WASHER 3/4"	2	
25	EM903168	BEARING CONE INNER	4	
26	EM903169	BEARING CUP INNER	4	
27	EM914324	SEAL	2	
28	EM941277	HUB W/BEARING CUPS (4-LUG)	2	
30	EM903113	BEARING CONE OUTER	2	
31	EM903012	BEARING CUPS OUTER	2	

MS-40H HYDRAULIC MIXER — ENGINE COVER ASSY.

ENGINE COVER ASSY.



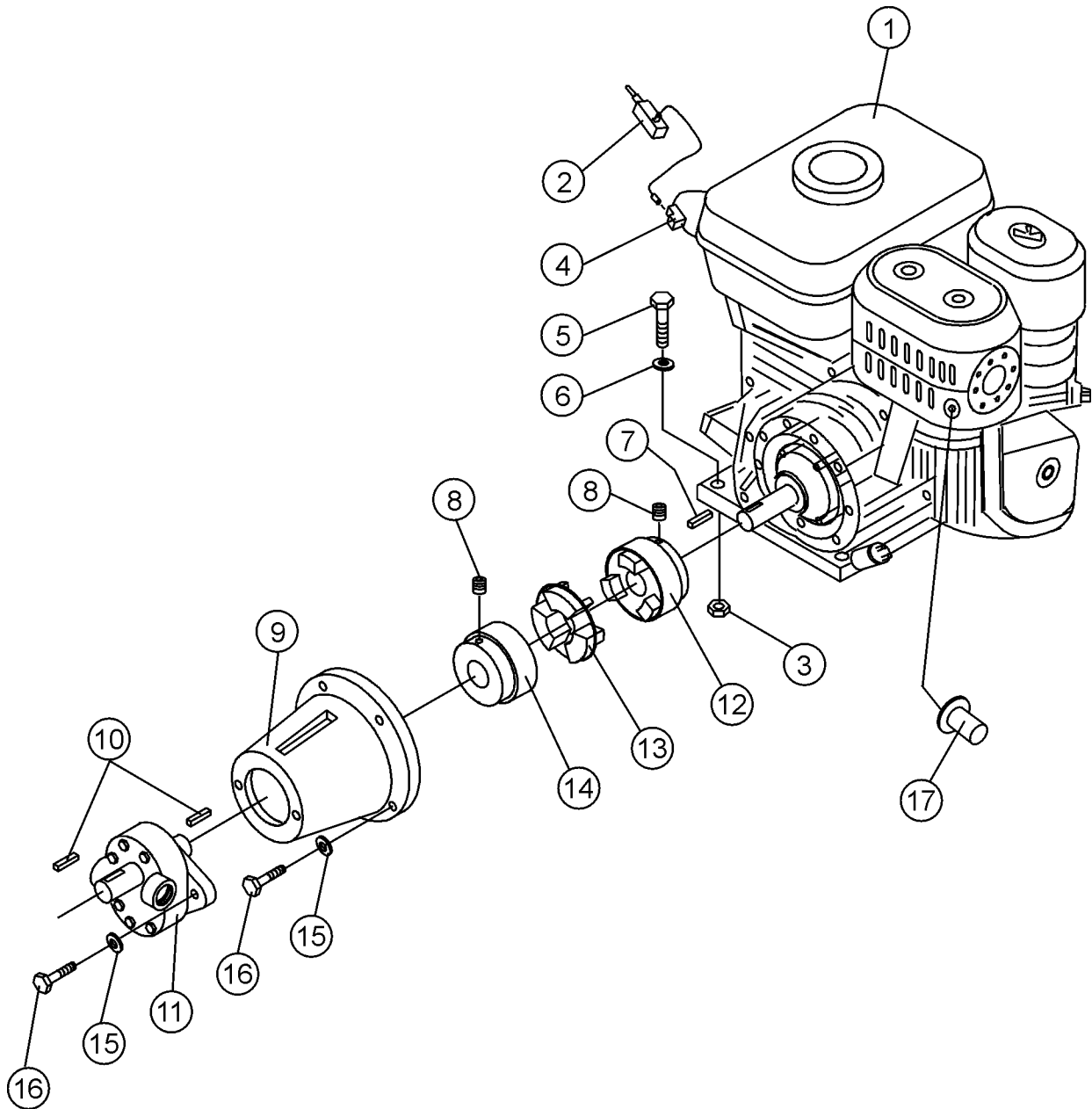
MS-40H HYDRAULIC MIXER — ENGINE COVER ASSY.

ENGINE COVER ASSY.

<u>NO</u>	<u>PART NO</u>	<u>PART NAME</u>	<u>QTY.</u>	<u>REMARKS</u>
1	511580Y	ENGINE COVER-STEEL	1	
2	509726Y	LATCH PIN ASSY.	2	
3	491010	RUBBER LATCH ASSY.	2	
4	1284	SCREW, HHCS 3/8-16 X 1.1/2"	4	
5	4001	FLAT WASHER 3/8"	8	
6	10133	LOCK NUT 3/8-16	4	

MS-40H HYDRAULIC MIXER — ENGINE ASSY.

ENGINE ASSY.



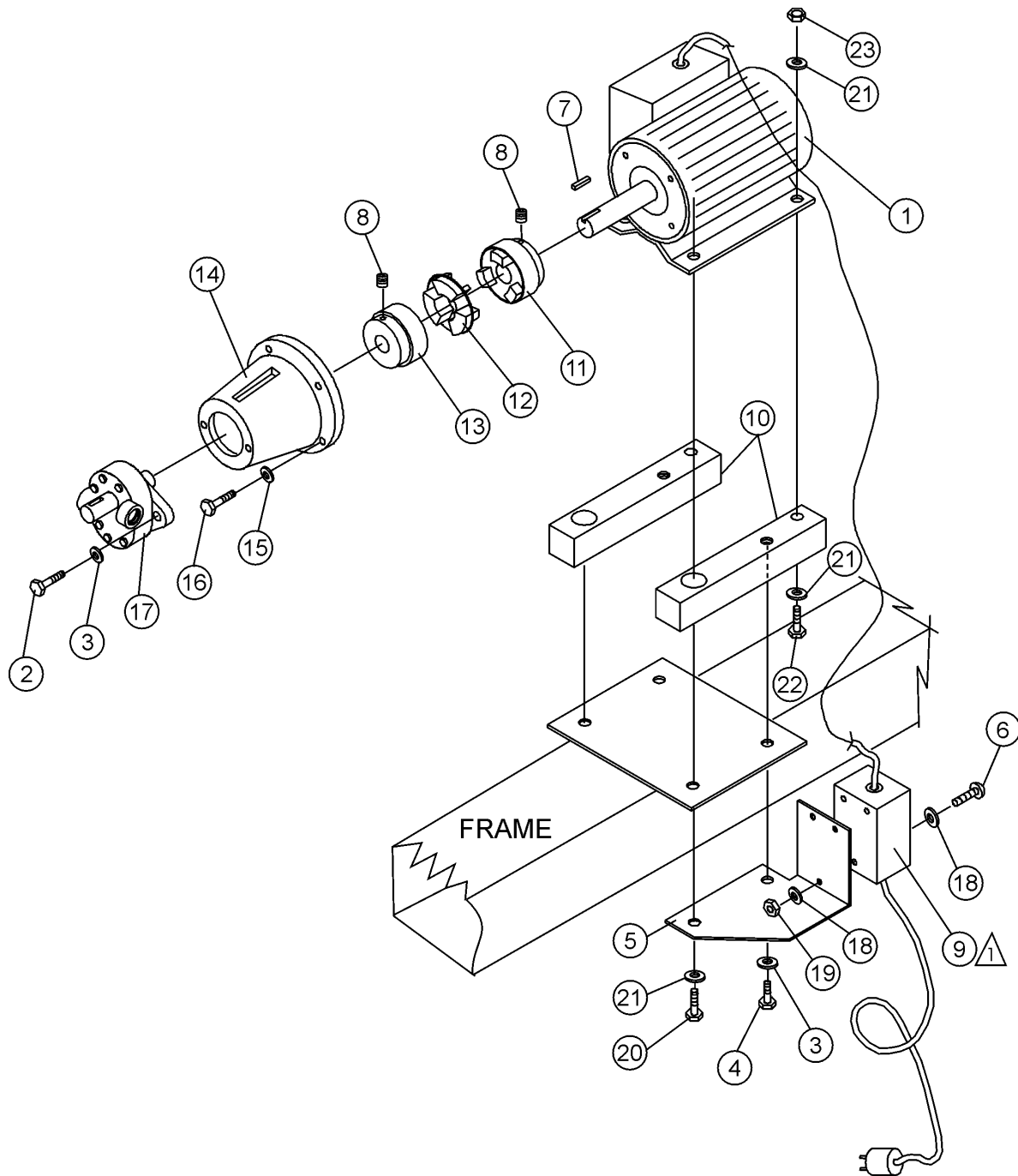
MS-40H HYDRAULIC MIXER — ENGINE ASSY.

ENGINE ASSY.

<u>NO</u>	<u>PART NO</u>	<u>PART NAME</u>	<u>QTY.</u>	<u>REMARK</u>
1	GX390K1QX2	HONDA ENGINE 13 HP	1	
2	3396	KILL BUTTON	1	
3	10133	LOCK NUT 3/8-16	4	
4	1475	WIRE CONNECTOR	1	
5	1665	HHCS 3/8-16 X 2"	4	
6	10136	FLAT WASHER 3/8"	4	
7	0310	SQ. KEY 1/4 X 1/4 X 1.1/2"	1	
8	0622C	SHSS 5/16-18 X 1/2"	2	
9	3325	PUMP MOUNT	1	
10	2126	SQ. KEY 3/16 X 3/16 X 13/16"	2	
11	13374	HDRAULIC PUMP SINGLE SHAFT	1	
12	3419	COUPLER (ENGINE END)	1	
13	3418	COUPLER INSERT	1	
14	3420	COUPLER (PUMP END)	1	
15	0166A	LOCK WASHER 3/8"	6	
16	1023	HHCS 3/8-16 X 1.1/4"	6	
17	EM203149	MUFFLER PIPE	1	

MS-40H HYDRAULIC MIXER — 1 ϕ - 5 HP ELECTRIC MOTOR ASSY.

SINGLE PHASE, 5 HP ELECTRIC MOTOR ASSY.



NOTES:

 HEATER ELEMENTS ARE LOCATED INSIDE SWITCH BOX

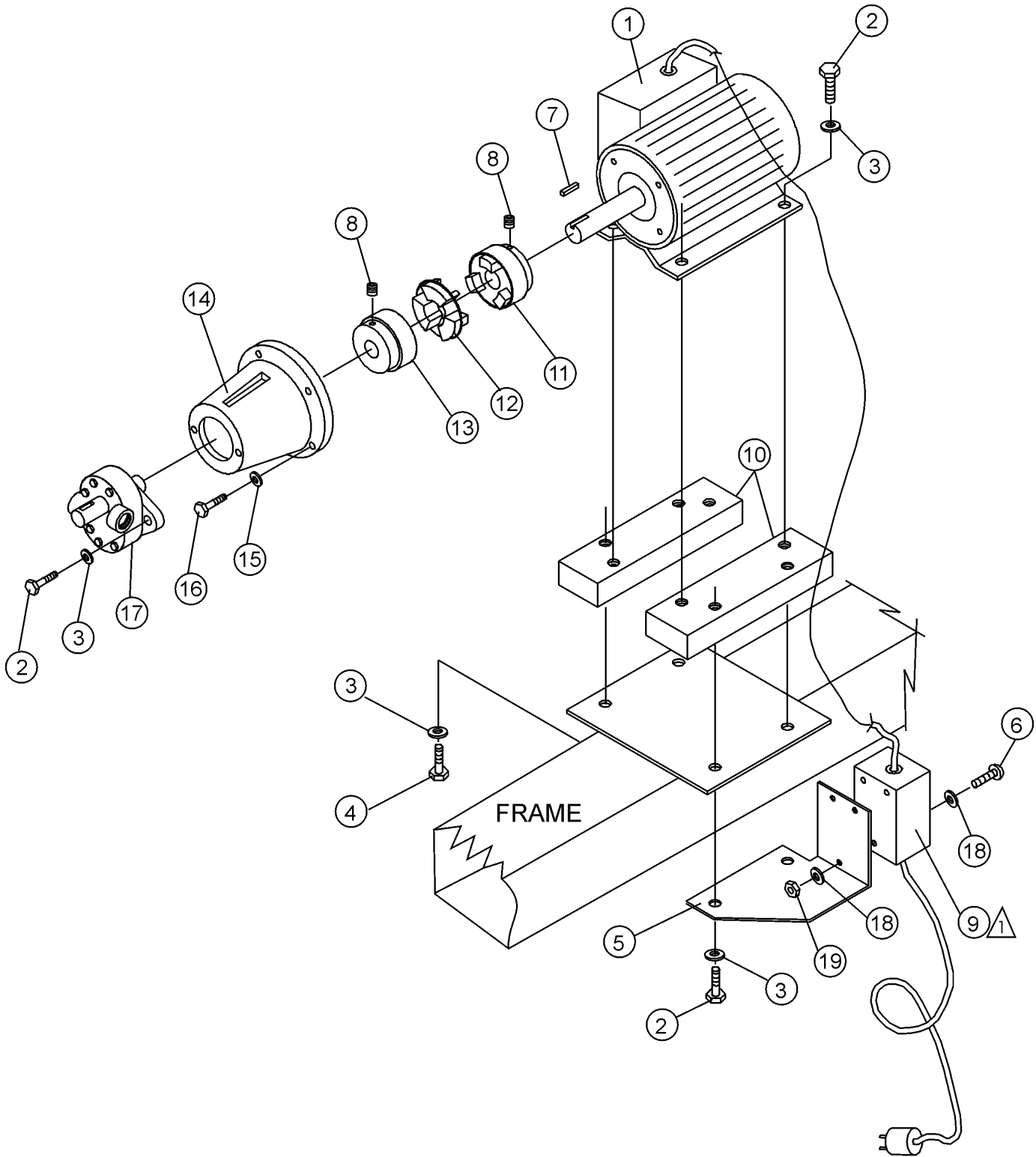
MS-40H HYDRAULIC MIXER — 1 ϕ - 5 HP ELECTRIC MOTOR ASSY.

SINGLE PHASE, 5 HP ELECTRIC MOTOR ASSY.

<u>NO</u>	<u>PART NO</u>	<u>PART NAME</u>	<u>QTY.</u>	<u>REMARK</u>
1	3414	5 HP ELECTRIC MOTOR (SINGLE PHASE)	1	
2	1023	SCREW, HHCS 3/8-16 X 1-1/4	2	
3	0166A	LOCK WASHER 3/8	4	
4	0205	SCREW, HHCS 3/8-16 X 1	2	
5	13291	SWITCH MOUNTING PLATE	1	
6	8133	SCREW, RHMS 8-32 X 3/4	3	
7	0310	SQUARE KEY 1/4 X 1/4 X 1-1/2	1	
8	0622C	SCREW, 5/16 -18 X 1/2	2	
9*	940228	SWITCH BOX (3 PHASE)	1	
	940198	HEATER ELEMENT	3	INCLUDES ITEM W/*
10	13292	MOTOR MOUNT BLOCK	2	
11	3421	COUPLER (MOTOR END)	1	
12	3418	COUPLER INSERT	1	
13	3420	COUPLER (PUMP END)	1	
14	3416	PUMP MOUNT	1	
15	5054A	LOCK WASHER 1/2	4	
16	2691	SCREW, HHCS 1/2 -13 X 1	4	
17	13375	HRDRAULIC PUMP SINGLE SHAFT	1	
18	2203	FLAT WASHER #10	6	
19	10019	LOCK NUT 10-32	3	
20	8156	SCREW, HHCS 3/8-16 X 2-1/2	2	
21	10136	FLAT WASHER 3/8	8	
22	1665	SCREW, HHCS 3/8-16 X 2	2	
23	10133	LOCK NUT 3/8-16	4	

MS-40H HYDRAULIC MIXER — 3 ϕ - 5 HP ELECTRIC MOTOR ASSY.

THREE PHASE, 5 HP ELECTRIC MOTOR ASSY.



NOTES:

- ⚠ HEATER ELEMENTS ARE LOCATED INSIDE SWITCH BOX.

MS-40H HYDRAULIC MIXER — 3 ϕ - 5 HP ELECTRIC MOTOR ASSY.

THREE PHASE, 5 HP ELECTRIC MOTOR ASSY.

<u>NO</u>	<u>PART NO</u>	<u>PART NAME</u>	<u>QTY.</u>	<u>REMARK</u>
1	3481	5 HP ELECTRIC MOTOR (THREE PHASE)	1	
2	1023	SCREW, HHCS 3/8-16 X 1-1/4	2	
3	0166A	LOCK WASHER 3/8	4	
4	0205	SCREW, HHCS 3/8-16 X 1	2	
5	13291	SWITCH MOUNTING PLATE	1	
6	8133	SCREW, RHMS 8-32 X 3/4	3	
7	0310	SQUARE KEY 1/4 X 1/4 X 1-1/2	1	
8	0622C	SCREW, 5/16 -18 X 1/2	2	
9*	940228	SWITCH BOX (3 PHASE)	1	
	940198	HEATER ELEMENT	3 INCLUDED W/*
10	13289	MOTOR MOUNT BLOCK	2	
11	3421	COUPLER (MOTOR END)	1	
12	3418	COUPLER INSERT	1	
13	3420	COUPLER (PUMP END)	1	
14	3416	PUMP MOUNT	1	
15	5054A	LOCK WASHER 1/2	4	
16	2691	SCREW, HHCS 1/2 -13 X 1	4	
17	13375	HYDRAULIC PUMP SINGLE SHAFT	1	I
18	2203	FLAT WASHER #10	6	
19	10019	LOCK NUT 10-32	3	