

PARTS AND OPERATION MANUAL

STOW

A DIVISION OF MULTIQUIP INC.

PLASTER/MORTAR MIXER

MS20H (Steel-Gasoline)

MS20E (Steel-Electric)

Effective S/N SEC55001

Revision #3 (08/10/06)

MS20H/MS20E MIXER — SUGGESTED SPARE PARTS

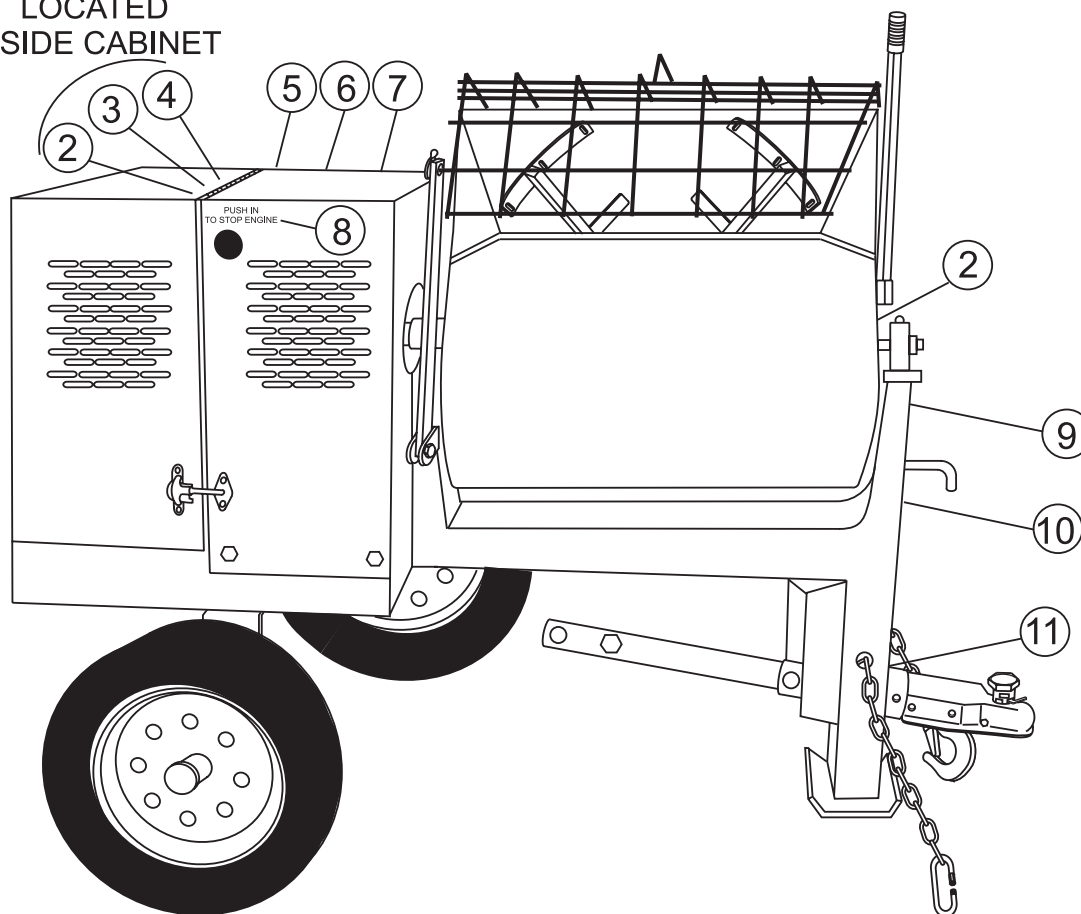
MS20H/MS20E MIXER 1 TO 3 UNITS WITH HONDA GX240K1HA2 ENGINE

Qty.	P/N	Description
2	491010	RUBBER LATCH ASSY.
1	503640	V-BELT, HONDA 8.0 HP
1	491112	V-BELT, ELECTRIC MOTOR
1	25647-503	WIPER KIT
2	3065	SEAL, AXLE
1	29173-001	STOP SWITCH
3	9807956846	SPARK PLUG HONDA 8.0 HP
3	17210ZE2505	ELEMENT, AIR HONDA 8.0 HP
1	28462ZE2W11	ROPE, RECOIL STARTER

MS20H/MS20E MIXER — NAMEPLATE AND DECALS

NAMEPLATE AND DECALS.

LOCATED
INSIDE CABINET



MS20H/MS20E MIXER — NAMEPLATE AND DECALS

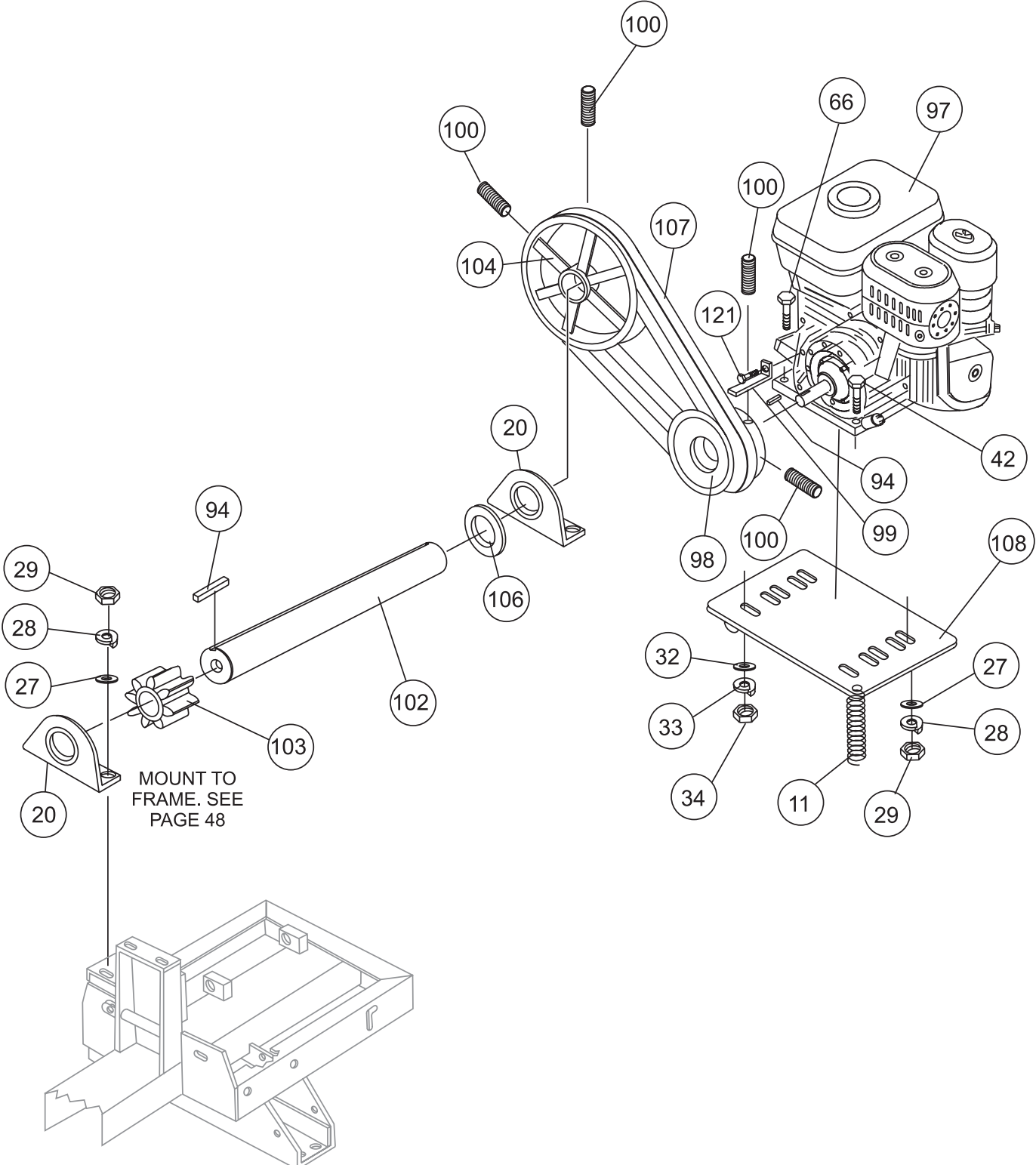
NAMEPLATE AND DECALS.

<u>NO</u>	<u>PART NO</u>	<u>PART NAME</u>	<u>QTY.</u>	<u>REMARKS</u>
2*	TBD	DECAL: STOW (MULTIQUIP)	2	
3*	21780-001	DECAL: WARNING	1	
4*	DCL160	DECAL: PROP. 65	1	
5*	TBD	DECAL: KEEP COVER CLOSED	1	
6*	TBD	DECAL: CAUTION READ	1	
7*	21781-001	DECAL: BELT SLIP LEVER	1	
8*	25259-001	DECAL: WARNING GRATE	1	
9*	TBD	DECAL: PUSH IN STOP	1	
10		DECAL: NAMEPLATE	1 CONTACT MQ PARTS DEPT.
11*	25474-001	DECAL: CAUTION, DRUM LOCK	1	
12*	21513-001	DECAL: WARNING TOW POLE	1	
13	DCLMS20	KIT, DECAL	1 INCLUDES ITEMS W/*

SEE DECAL ILLUSTRATIONS ON PAGE 11.

MS20H/MS20E MIXER — HONDA ENGINE ASSY.

HONDA ENGINE ASSY.



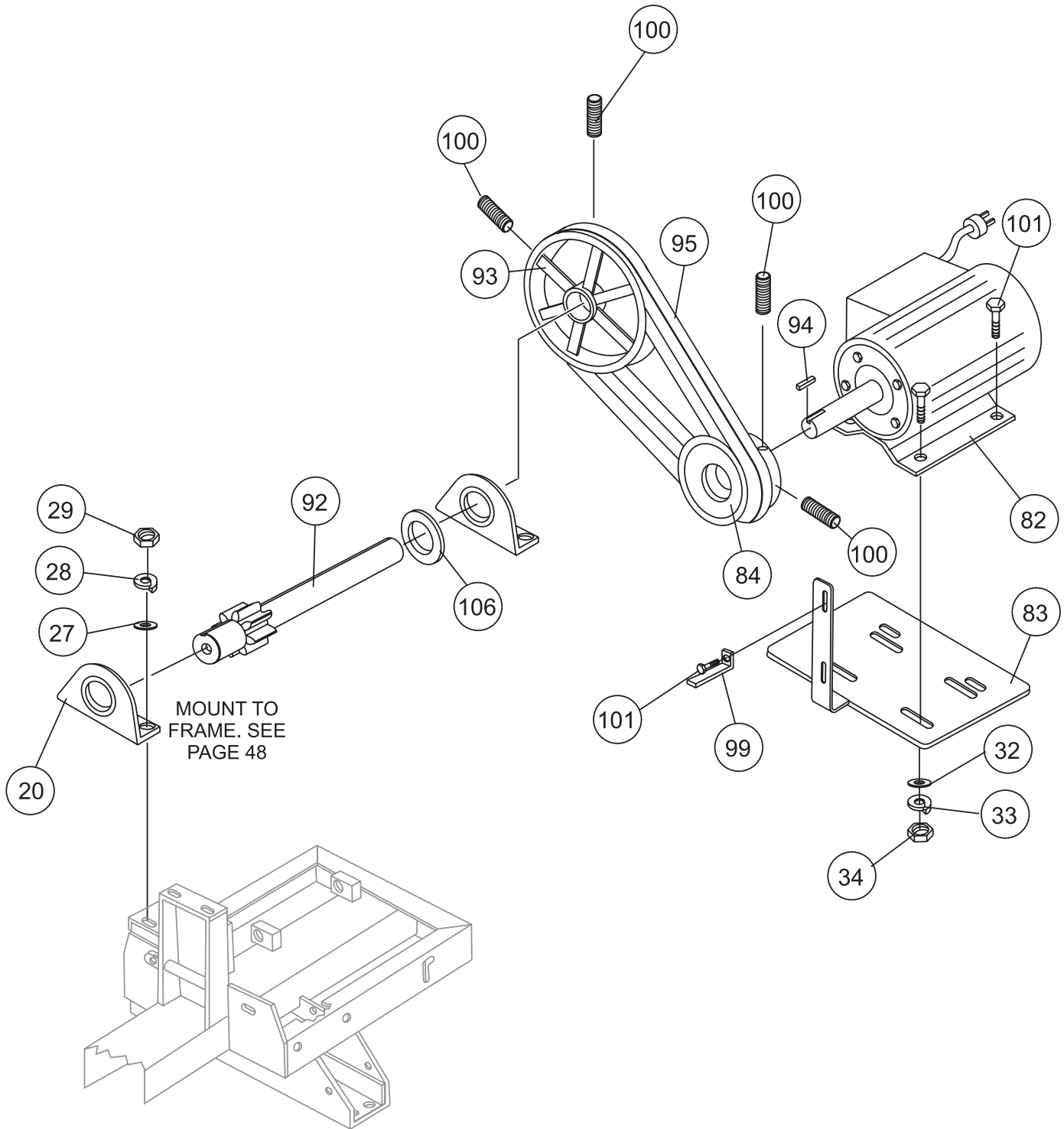
MS20H/MS20E MIXER — HONDA ENGINE ASSY.

HONDA ENGINE ASSY.

<u>NO</u>	<u>PART NO</u>	<u>PART NAME</u>	<u>QTY.</u>	<u>REMARKS</u>
11	20559-001	POWER MOUNT SPRING	1	
20	20178-001	PILLOW BLOCK BEARING	2	
27	07030-006	FLAT WASHER 3/8	44	
28	07029-006	LOCK WASHER 3/8	50	
29	07033-006	HEX NUT 3/8-16	50	
32	07030-005	FLAT WASHER 5/16	6	
33	07029-005	LOCK WASHER 5/16	6	
34	07033-005	HEX NUT 5/16-18	6	
42	06501-014	CAP SCREW 3/8-16 x 1-3/4	4	
66	06500-016	CAP SCREW 5/16 - 18 x 2	2	B & S 7.0 HP
94	10057-032	SQUARE KEY 1/4 x 1-1/2	3	
97	GX240K1HA2	ENGINE- 8 H.P. HONDA	1	REPLACES 21922-401
99	24975-001	BELT RETAINER BAR	1	
98	505205	DRIVE PULLEY	1	
100	12969-008	SOCKET SET SCREW 5/16-18	4	
102	20019-001	PINION SHAFT	1	
103	20022-001	PINION GEAR	1	
104	492077	DRIVEN PULLEY	1	
106	07030-016	FLAT WASHER	AR	
107	503640	V-BELT	2	HONDA, B & S
108	20771-354	ENGINE MOUNT	1	
121	06500-010	CAP SCREW 5/16- 18 x 1-1/4	1	

MS20H/MS20E MIXER — ELECTRIC MOTOR ASSY. (ELECTRIC)

ELECTRIC MOTOR ASSY.



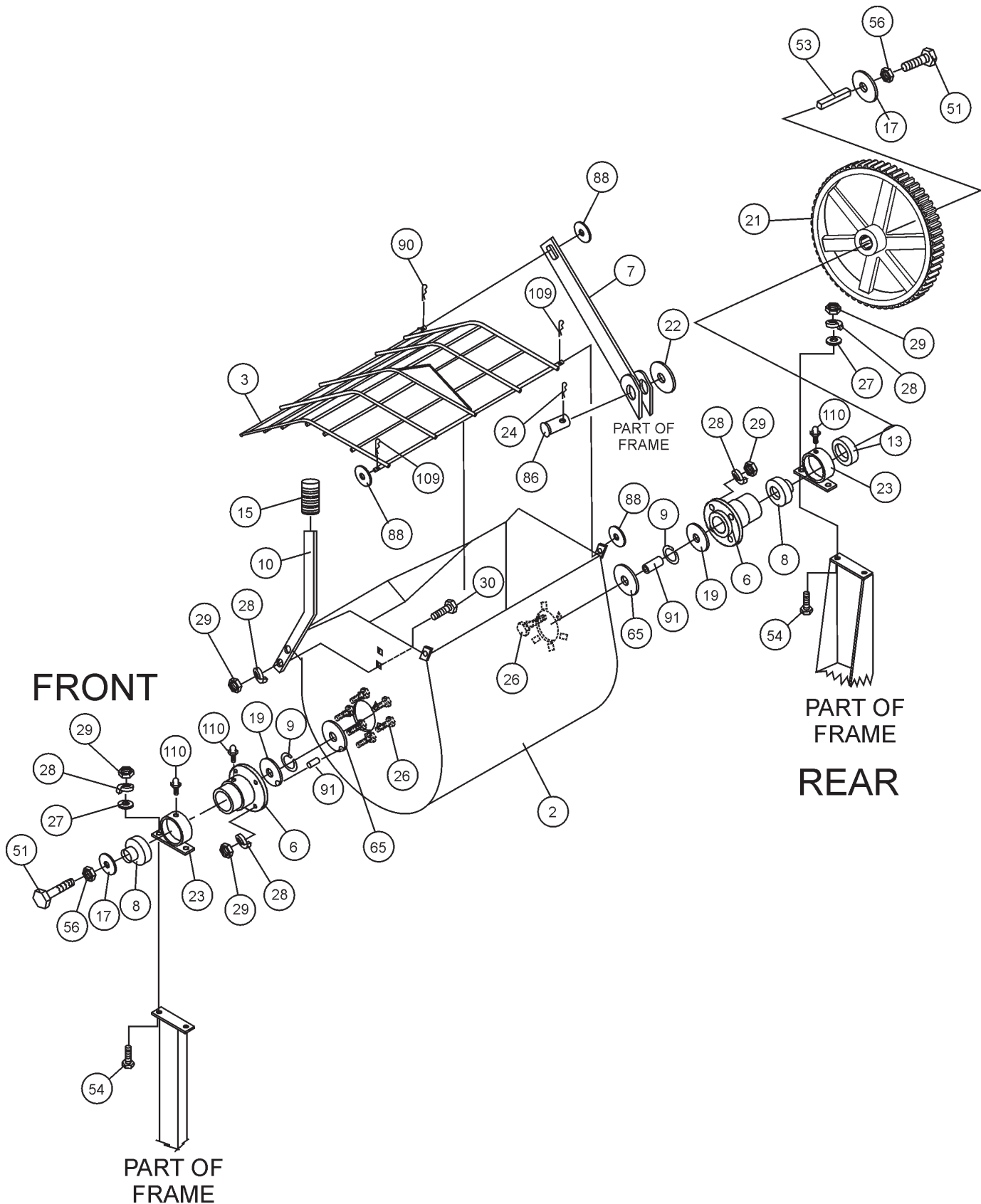
MS20H/MS20E MIXER — ELECTRIC MOTOR ASSY. (ELECTRIC)

ELECTRIC MOTOR ASSY.

<u>NO</u>	<u>PART NO</u>	<u>PART NAME</u>	<u>QTY.</u>	<u>REMARKS</u>
20	20178-001	PILLOW BLOCK	2	
27	07030-006	FLAT WASHER 3/8	40	
28	07029-006	LOCK WASHER 3/8	50	
29	07033-006	HEX NUT 3/8-16	50	
32	07030-005	FLAT WASHER 5/16	6	
33	07029-005	LOCK WASHER 5/16	6	
34	07033-005	HEX NUT 5/16-18	6	
82	493206	MOTOR & CONTROL ASSY.	1	
83	20250-352	MOTOR MOUNT UNIT	1	
84	502213	DRIVE PULLEY	1	
92	20216-001	PINION & SHAFT	1	
93	530088	DRIVEN PULLEY	1	
94	10057-032	SQUARE KEY 1/4 x 1-1/2	2	
95	491112	V-BELT	2	
99	24975-001	BELT RETAINER BAR	1	
100	12969-008	SOCKET SET SCREW 5/16-18	4	
101	06500-008	CAP SCREW 5/16-18 x 1	5	

MS20H/MS20E MIXER — STEEL TUB ASSY.

STEEL TUB ASSY.



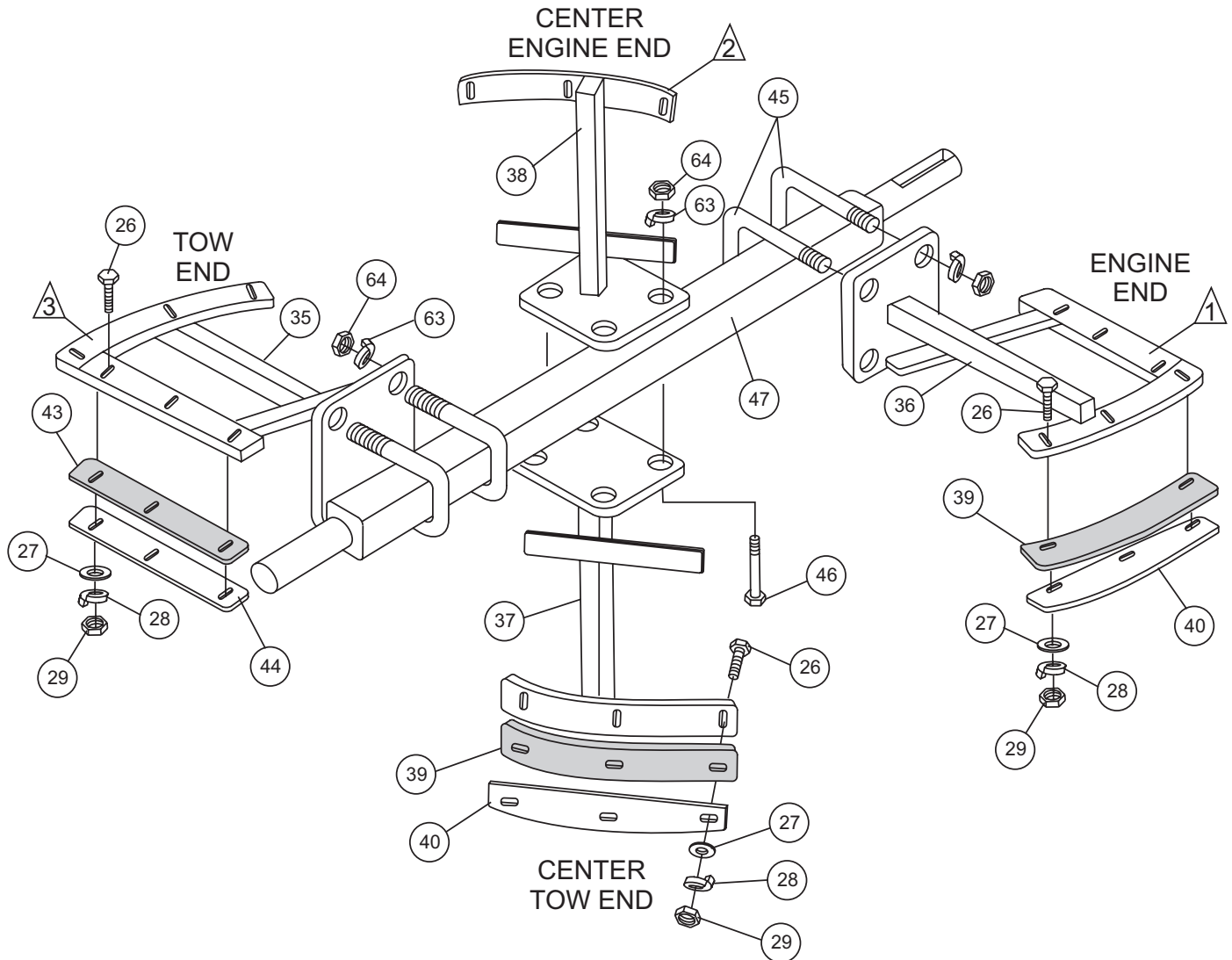
MS20H/MS20E MIXER — STEEL TUB ASSY

STEEL TUB ASSY.

<u>NO</u>	<u>PART NO</u>	<u>PART NAME</u>	<u>QTY.</u>	<u>REMARKS</u>
2	29282-351	DRUM	1	
3	29212-351	GRATE	1	
6	20657-001	TRUNNION HUB	2	
7	27127-004	LIFT BAR	2	
8	20561-001	SEALED BEARING	2	
9	20655-001	RETAINING RING	2	
10	25492-001	DRUM HANDLE	1	
13	20211-001	MAIN GEAR SPACER	1	
15	21380-001	DRUM HANDLE GRIP	1	
17	18937-003	SPECIAL WASHER	2	
19	20654-001	SHAFT SEAL	2	
21	20472-001	MAIN GEAR	1	
22	08602-006	FLAT WASHER 3/8	12	
23	20576-501	DRUM BEARING ASSY.	2	
24	13698-062	HITCH PIN	1	
26	17985-010	CARRIAGE BOLT 3/8-16 x 1-1/4	22	
27	07030-006	FLAT WASHER 3/8	40	
28	07029-006	LOCK WASHER 3/8	50	
29	07033-006	HEX NUT 3/8-16	50	
51	06505-012	CAP SCREW 5/8 -11 x 1-1/2	2	
53	10057-034	SQUARE KEY 3/8 x 2	1	
54	17985-012	CARRIAGE BOLT 3/8 - 16 x 1-1/2	4	
56	07033-010	HEX NUT 5/8-11	1	
65	20104-001	SHAFT SEAL	2	
86	08326-007	CLEVIS PIN	1	
88	07030-008	FLAT WASHER 1/2	3	
90	13698-010	HITCH PIN	1	
91	07594-012	ROLL PIN 3/16 x 3/4	2	
109	07028-055	COTTER PIN 5/32 x 1	2	
110	07745-001	GREASE FITTING	3	

MS20H/MS20E MIXER — PADDLE SHAFT ASSY.

PADDLE SHAFT ASSY.



NOTES:

- ① WHEN ORDERING SCRAPER AND WIPER (SHORT) SEE ITEMS 43 AND 44 **TOW END.**
- ② WHEN ORDERING SCRAPER AND WIPER (LONG) SEE ITEMS 39 AND 40 **CENTER TOW END.**
- ③ WHEN ORDERING SCRAPER AND WIPER (LONG) SEE ITEMS 39 AND 40 **ENGINE END.**

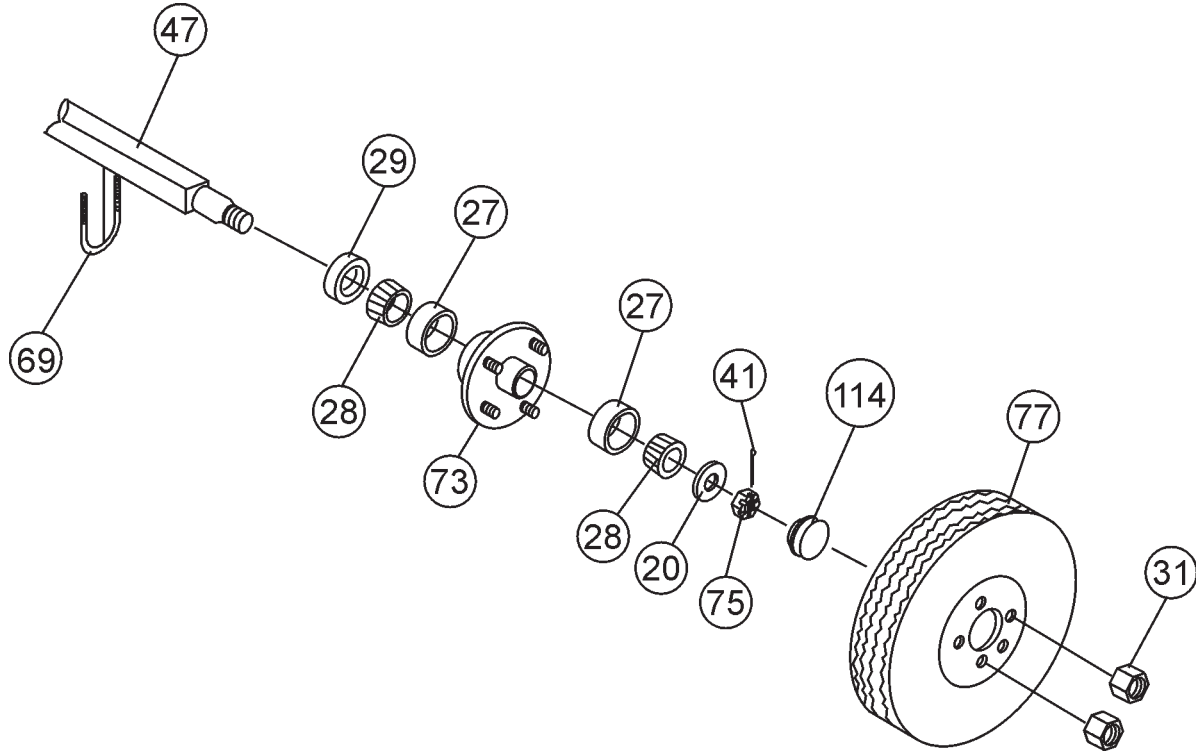
MS20H/MS20E MIXER — PADDLE SHAFT ASSY.

PADDLE SHAFT ASSY.

<u>NO</u>	<u>PART NO</u>	<u>PART NAME</u>	<u>QTY.</u>	<u>REMARKS</u>
26*	17985-010	CARRIAGE BOLT 3/8-16 x 1-1/4	22	
27*	07030-006	FLAT WASHER 3/8	44	
28*	07029-006	LOCK WASHER 3/8	50	
29*	07033-006	HEX NUT 3/8-16	50	
35*	29263-501	PADDLE ASSY. TOW POLE END	1	
36*	29263-504	PADDLE ASSY. ENGINE END	1	
37*	29263-502	PADDLE ASSY. CNT. TOW END	1	
38*	29063-503	PADDLE ASSY. CTN. ENG. END	1	
39*#	20726-001	WIPER LONG	4	
40*	20725-001	SCRAPER LONG	4	
43*#	20048-001	WIPER SHORT	2	
44*	20111-001	SCRAPER SHORT	2	
45	29059-002	U-BOLT PADDLE MNT.	4	
46	06513-026	CAP SCREW 1/2 -20 x 3-1/4	4	
47	29063-351	PADDLE SHAFT SQ	1	
63	07029-108	LOCK WASHER 1/2 GRADE 8	16	
64	07037-108	HEX NUT 1/2-20 GRADE 5	6	
	29285-503	PADDLE KIT	1	INCLUDES ITEMS W/*
	25647-503	WIPER KIT	1	INCLUDES ITEMS W/#

MS20H/MS20E MIXER — AXLE ASSY.

AXLE ASSY.



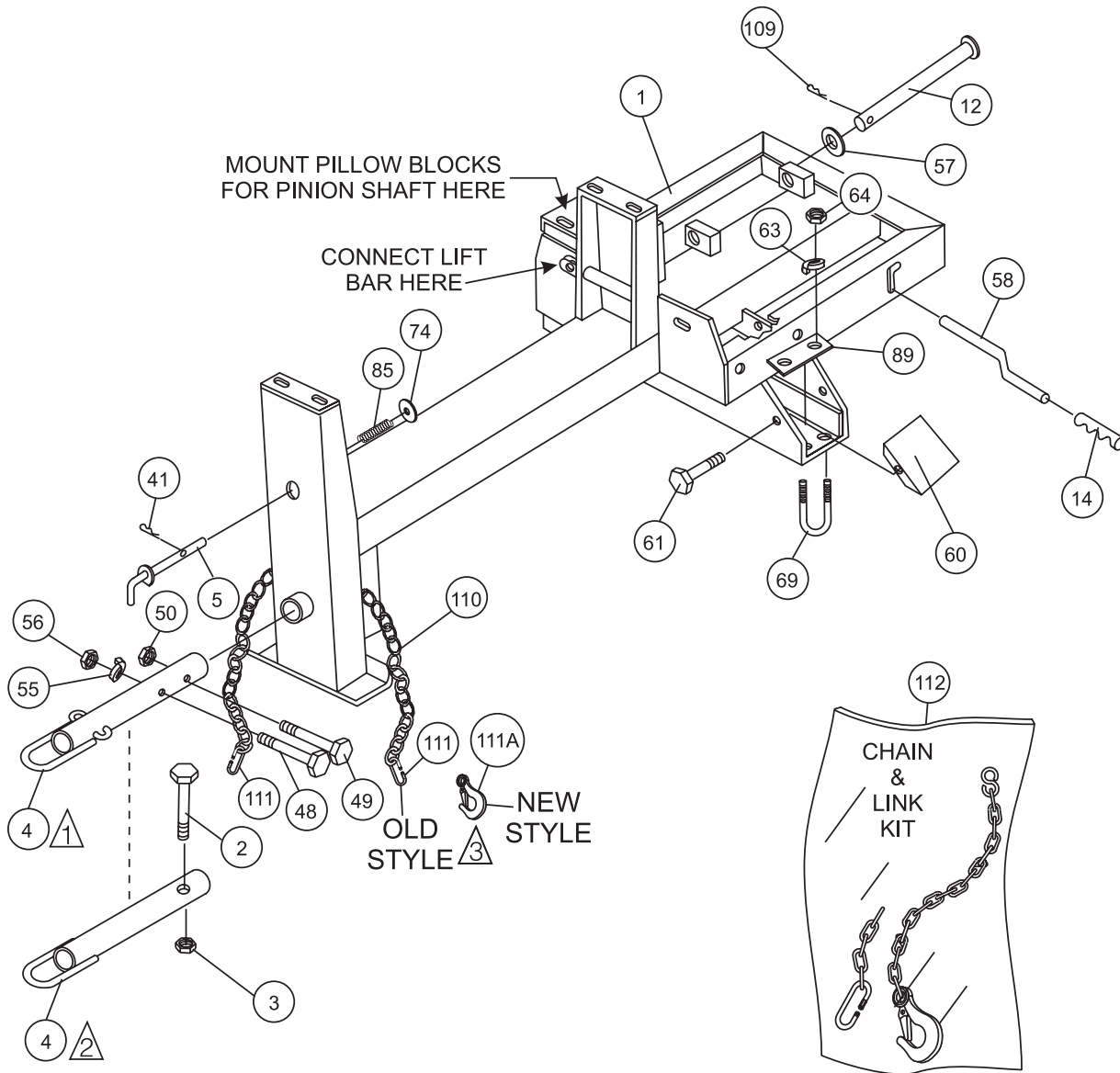
MS20H/MS20E MIXER — AXLE ASSY.

AXLE ASSY.

<u>NO</u>	<u>PART NO</u>	<u>PART NAME</u>	<u>QTY.</u>	<u>REMARKS</u>
20	507444	AXLE WASHER	2	
27*	EM903012	BEARING CUP	2	
28	EM903113	BEARING CONE	2	
29	3065	SEAL	2	
31	8115	WHEEL NUT	10	
41	0183	COTTER PIN 5/32 x 1-1/2	3	
47	530032	AXLE	1	
69	500617	U-BOLT AXLE MNT.	2	
73	EM941306	HUB ASSY.	2	INCLUDES ITEM W/*
75	502246	SLOTTED HEX NUT 1-20	2	
77	3005	WHEEL & TIRE ASSY. -12"	2	
114	3469	DUST COVER	2	

MS20H/MS20E MIXER — FRAME ASSY.

FRAME ASSY.



NOTES:

- ① BALL HITCH TOW POLE WITH 1-1/2" ID USE P/N 27071-351 UP TO SERIAL NUMBER "SEC"
- ① PINTLE TOW POLE WITH 1-1/2" ID USE P/N 26149-351 UP TO SERIAL NUMBER "SEC"
- ② BALL HITCH TOW POLE WITH 2" ID USE P/N HBC-1 STARTING WITH SERIAL NUMBER "SED"
- ② PINTLE TOW POLE WITH 2" ID USE P/N HLC-1 STARTING WITH SERIAL NUMBER "SED"
- ③ QUANTITY OF ITEM 111, CONNECTOR LINK, CHANGED FROM 2 TO 1 IN JANUARY 2006. ITEM 111A, CLEVIS SAFETY HOOK, REPLACES DISCONTINUED CONNECTOR LINK.

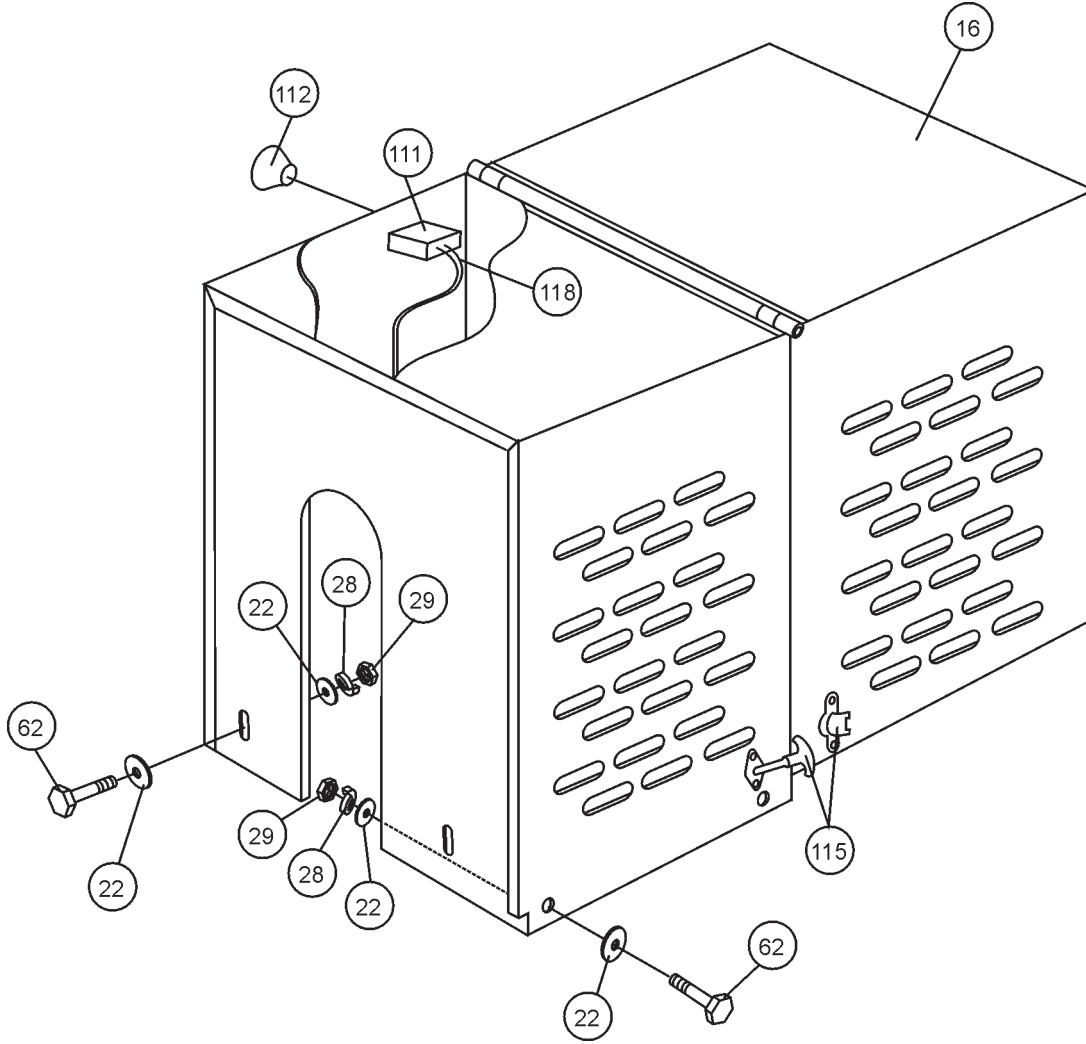
MS20H/MS20E MIXER — FRAME ASSY.

FRAME ASSY.

<u>NO</u>	<u>PART NO</u>	<u>PART NAME</u>	<u>QTY.</u>	<u>REMARKS</u>
1	29016-351	MAIN FRAME UNIT	1	
2	3215	BOLT 1/2 x 13 x 3-1/2	1	
3	10176	NUT, NYLOCK 1/2-13	1	
4	27071-351	BALL HITCH TOW POLE 1-1/2" ID	1	UP TO S/N SEC
4	26149-351	PINTLE TOW POLE 1-1/2" ID	1	UP TO S/N SEC
4	HBC-1	BALL HITCH TOW POLE 2" ID	1	STARTING AT S/N SEE
4	HLC-1	PINTLE TOW POLE 2" ID	1	STARTING AT S/N SEE
			CONTACT UNIT SALES
5	20567-352	LOCK PIN UNIT	1	
12	29277-351	ENGINE MOUNT SHAFT	1	
14	20278-001	CLUTCH HANDLE GRIP	1	
41	07028-057	COTTER PIN 5/32 x 1-1/2	3	
48	06505-028	CAP SCREW 5/8 -11 x 3-1/2	1	
49	06505-024	CAP SCREW 5/8 -11 x 3	1	
50	07418-010	LOCK NUT 5/8 NYLOCK	1	
55	07029-010	LOCK WASHER 5/8	3	
56	07033-010	HEX NUT 5/8-11	1	
57	07030-010	FLAT WASHER 5/8	3	
58	22856-001	BELT SLIP LEVER	1	
60	28986-001	TRANSOM COVER	2	
61	22538-001	THD. ROLLING SCREW 1/4-20 x 1/2	4	
63	TBD	LOCK WASHER 1/2 GRADE 8	16	
64	492589	HEX NUT 1/2-20 GRADE 5	6	
69	500617	U-BOLT AXLE MNT.	2	
74	07030-012	FLAT WASHER 3/4	1	
85	25398-001	SPRING- LOCKING PIN	1	
89	29242-001	PLATE	2	
109	07028-055	COTTER PIN 5/32 x 1	2	
110#		SAFETY CHAIN	1	
111#	01004	CONNECTOR LINK	2	BEFORE JANUARY 2006
111#	01004	CONNECTOR LINK	1	AFTER JANUARY 2006
111A#	516580	CLEVIS SAFETY HOOK	1	AFTER JANUARY 2006
112	13363KIT	CHAIN AND LINK KIT	1	INCLUDES ITEMS W/#

MS20H/MS20E MIXER — ENGINE COVER ASSY.

CABINET ASSY.



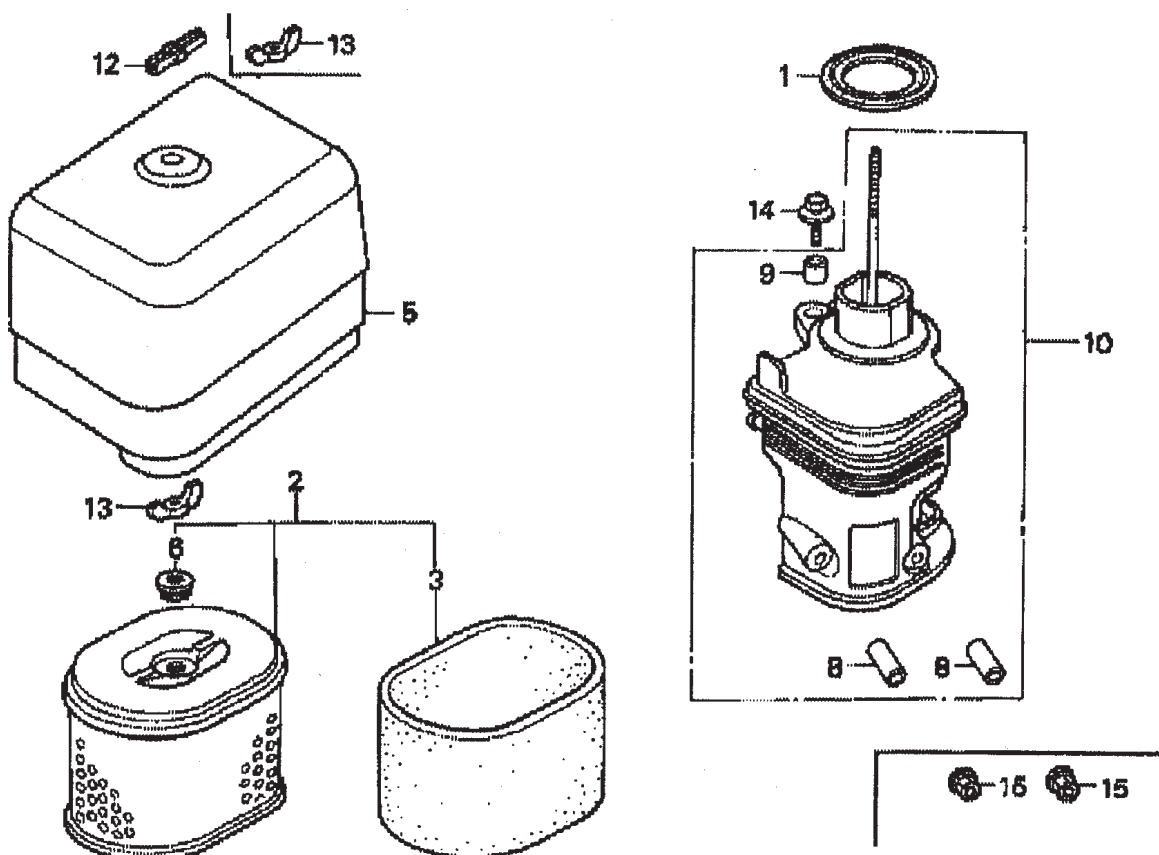
MS20H/MS20E MIXER — ENGINE COVER ASSY.

ENGINE COVER ASSY.

<u>NO</u>	<u>PART NO</u>	<u>PART NAME</u>	<u>QTY.</u>	<u>REMARKS</u>
16	29280-501	ENGINE HOUSE ASSY.	1	
22	08602-006	FLAT WASHER 3/8	12	
28	07029-006	LOCK WASHER 3/8	50	
29	07033-006	HEX NUT 3/8-16	50	
62	06501-008	CAP SCREW 3/8 - 16 x 1	12	
111	29173-001	STOP SWITCH	1	
112	29174-001	RED KNOB	1	
115	491010	LATCH ASSY.	2	
118	23342-523	WIRE ASSY. GROUND LEAD	1	HONDA, B & S

HONDA GX240K1HA2 ENGINE — AIR CLEANER ASSY.

AIR CLEANER ASSY.



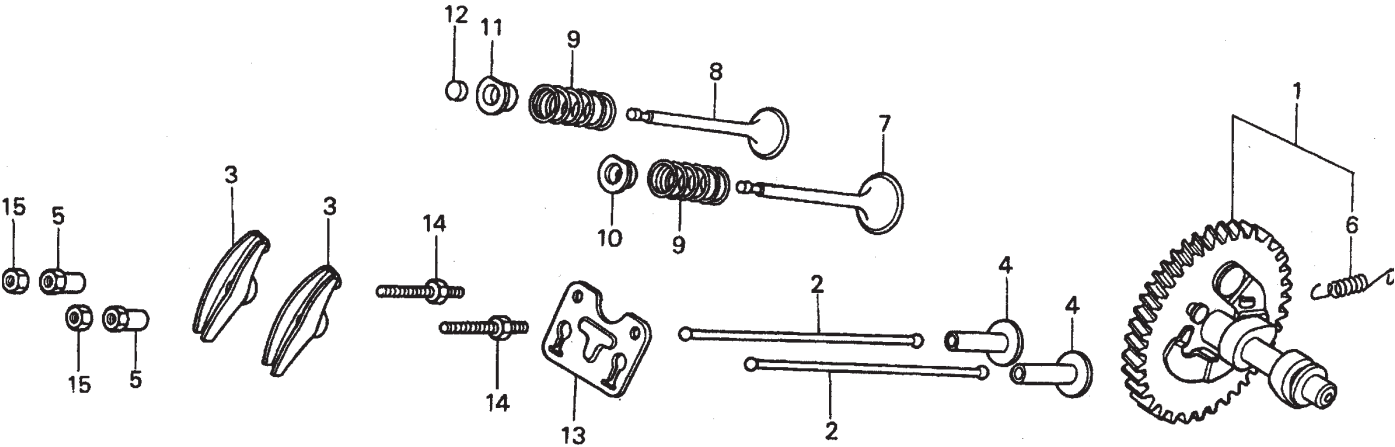
HONDA GX240K1HA2 ENGINE — AIR CLEANER ASSY.

AIR CLEANER ASSY.

<u>NO.</u>	<u>PART NO.</u>	<u>PART NAME</u>	<u>QTY.</u>	<u>REMARKS</u>
1	16271ZE2000	GASKET, ELBOW	1	INCLUDES ITEM W/*
2	17210ZE2505	ELEMENT, AIR CLEANER, DUAL	1	
3 *	17218ZE2505	FILTER, OUTER	1	
5	17231ZH9820	COVER, AIR CLEANER	1	
6	17232891000	GROMMET, AIR CLEANER	1	
8 #	17238ZE2310	COLLAR, AIR CLEANER	2	
9 #	17239ZE1000	COLLAR B, AIR CLEANER	1	
10	17410ZE2020	ELBOW COMP., AIR CLEANER	1	INCLUDES ITEM W/#
12	90203ZA0800	WINGNUT 6MM	1	
13	90325044000	WINGNUT, TOOL BOX SETTING	2	
14	90009ZE2003	BOLT- WASHER 6 X 22	1	
15	9405006000	NUT, FLANGE 6MM	2	

HONDA GX240K1HA2 ENGINE — CAMSHAFT ASSY.

CAMSHAFT ASSY.



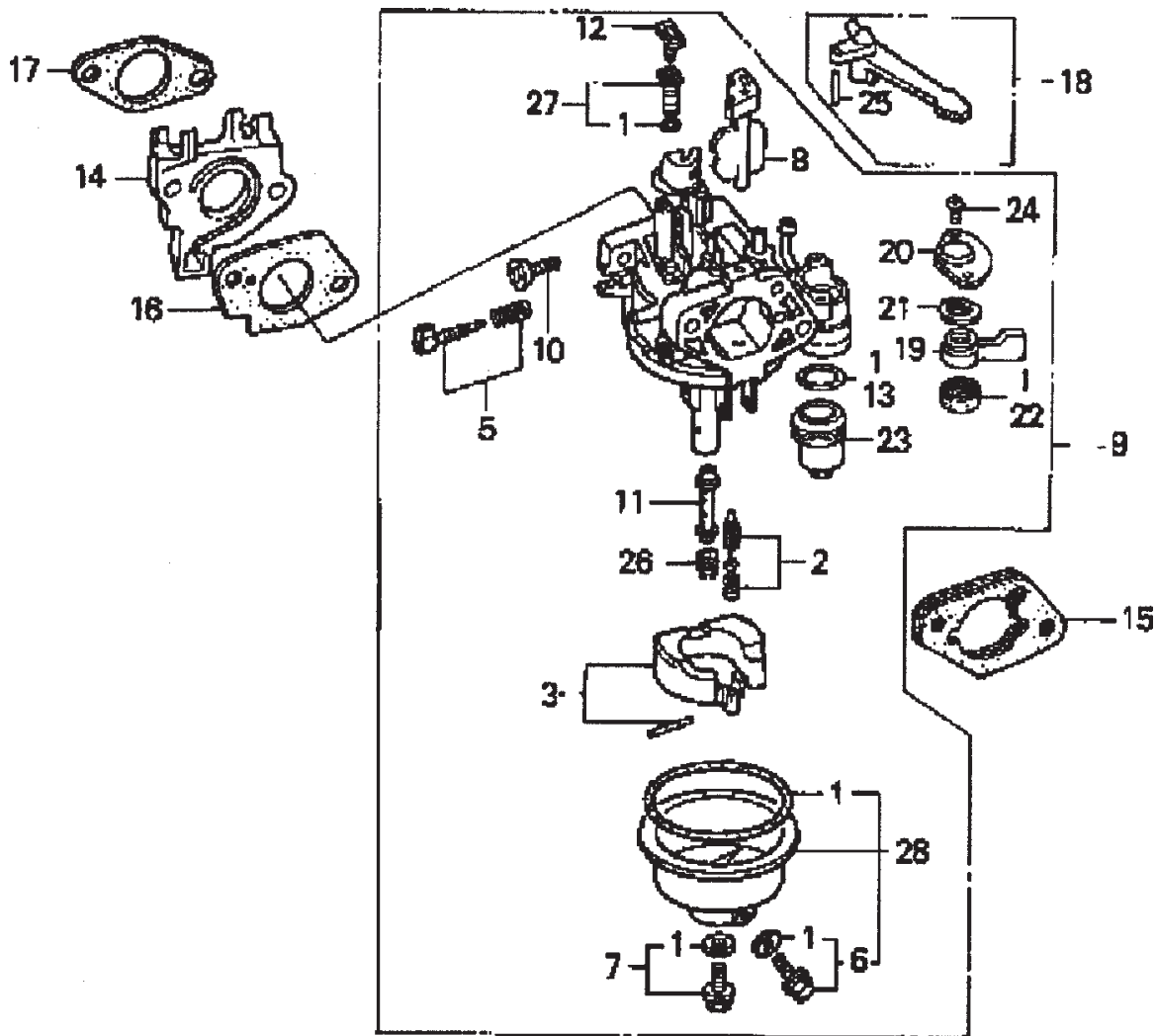
HONDA GX240K1HA2 ENGINE — CAMSHAFT ASSY.

CAMSHAFT ASSY.

<u>NO.</u>	<u>PART NO.</u>	<u>PART NAME</u>	<u>QTY.</u>	<u>REMARKS</u>
1	14100ZE2W01	CAMSHAFT ASSY.	1	INCLUDES ITEM W/*
1	14100ZE2306	CAMSHAFT	1	
2	14410ZE2013	ROD PUSH	2	
3	14431ZE2010	ARM VALVE ROCKER	2	
4	14441ZE2000	LIFTER VALVE	2	
5	14451ZE1013	PIVOT ROCKER ARM	2	
6*	14568ZE1000	SPRING, WEIGHT RETURN	1	
7	14711ZE2000	VALVE, IN.	1	
8	14721ZE2000	VALVE, EX.	1	
9	14751ZE2003	SPRING, VALVE	2	
10	14771ZE2000	RETAINER, IN. VALVE SPRING	1	
11	14773ZE2000	RETAINER, EX. VALVE SPRING	1	
12	14781ZE2000	ROTATOR, VALVE	1	
13	14791ZE2010	PLATE, PUSH ROD GUIDE	1	
14	90012ZE0010	BOLT, PIVOT 8MM	2	
15	90206ZE1000	NUT, PIVOT ADJ.	2	

HONDA GX240K1HA2 ENGINE — CARBURETOR ASSY.

CARBURETOR ASSY.



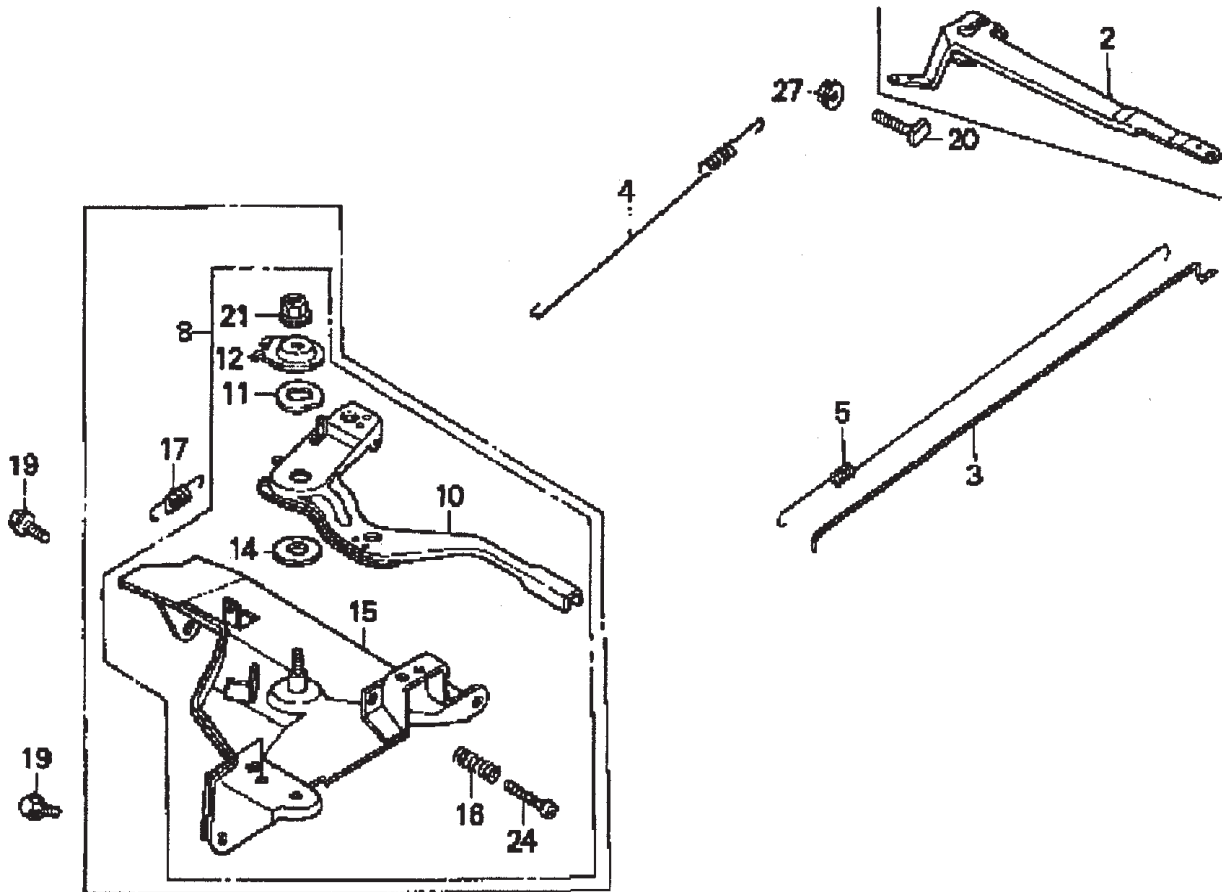
HONDA GX240K1HA2 ENGINE — CARBURETOR ASSY.

CARBURETOR ASSY.

<u>NO.</u>	<u>PART NO.</u>	<u>PART NAME</u>	<u>QTY.</u>	<u>REMARKS</u>
1*+	16010ZE2812	GASKET SET	1	
2*	16011ZA0931	VALVE SET, FLOAT	1	
3*	16013ZA0931	FLOAT SET	1	
5*	16016ZHW01	SCREW SET	1	
6*+	16024ZE1811	SCREW SET, DRAIN	1	
7*+	16028ZE0005	SCREW SET B	1	
8*	16028ZE2005	CHOKE SET	1	
9*	16100ZE2W71	CARBURETOR ASSY.....	1	INCLUDES ITEMS W/*
10*	16124ZE0005	SCREW, THROTTLE STOP	1	
11*	16166ZE2W70	NOZZLE, MAIN	1	
12*	16172ZE3W10	COLLAR, SET	1	
13*	16173001004	O-RING	1	
14	16211ZE2000	INSULATOR, CARB.	1	
15	16220ZA0702	SPACER COMP., CARB.	1	
16	16221ZA0800	GASKET, CARBURETOR	1	
17	16223ZA0800	GASKET, INSULATOR	1	
18	16610ZE1000	LEVER COMP., CHOKE, STD.	1	
19*	16953ZE1812	LEVER, VALVE	1	
20*	16954ZE1811	PLATE, LEVER SETTING	1	
21*	16956ZE1811	SPRING, VALVE LEVER	1	
22*	16957ZE1812	GASKET, VALVE	1	
23*	16967ZE0811	CUP, FUEL STRAINER	1	
24*	93500030060H	SCREW, PAN 3 X 6	2	
25	9430520122	PIN, SPRING 2 X 12	1	
26*	99101ZH70820	JET, MAIN #82, OPTIONAL	1	
26*	99101ZH70850	JET, MAIN #85, OPTIONAL	1	
26*	99101ZH70880	JET, MAIN #88	1	
27*	99204ZE20400	JET SET, PILOT #40	1	
28*	16015ZE8005	CHAMBER SET, FLOAT	1	INCLUDES ITEMS W/+

HONDA GX240K1HA2 ENGINE — CONTROL ASSY.

CONTROL ASSY.



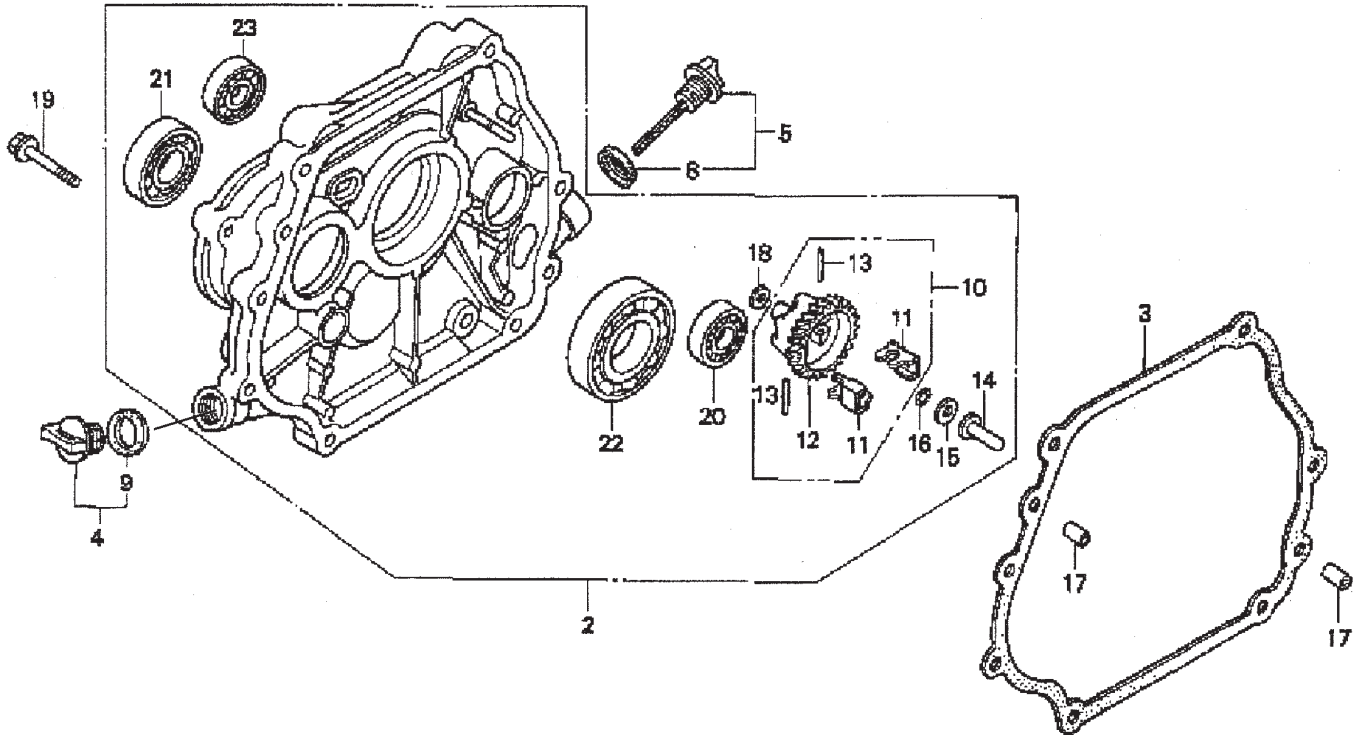
HONDA GX240K1HA2 ENGINE — CONTROL ASSY.

CONTROL ASSY.

<u>NO.</u>	<u>PART NO.</u>	<u>PART NAME</u>	<u>QTY.</u>	<u>REMARKS</u>
2	16551ZE2000	ARM, GOVERNOR	1	
3	16555ZE2000	ROD, GOVERNOR	1	
4	16561ZE2000	SPRING, GOVERNOR	1	
5	16571ZE2000	SPRING, THROTTLE RETURN	1	
8	16570ZE2W00	CONTROL ASSEMBLY	1	INCLUDES ITEMS W/*
10*	16571ZE2W00	LEVER, CONTROL	1	
11*	16574ZE1000	SPRING, LEVER	1	
12*	16575ZE2W00	WASHER, CONTROL LEVER	1	
14*	16578ZE1000	SPACER, CONTROL LEVER	1	
15*	16581ZE2W00	BASE, CONTROL	1	
16*	16584883300	SPRING, CONTROL ADJUSTING	1	
19	90013883000	BOLT, FLANGE (6 X 12) (CT200)	2	
20	90015ZE5010	BOLT, GOVERNOR ARM	1	
21*	90114SA0000	NUT, SELF- LOCK (6MM)	1	
24*	93500050280A	SCREW, PAN (5 X 28)	1	
27	9405006000	NUT, FLANGE	1	

HONDA GX240K1HA2 ENGINE — CRANKCASE COVER ASSY.

CRANKCASE COVER ASSY.



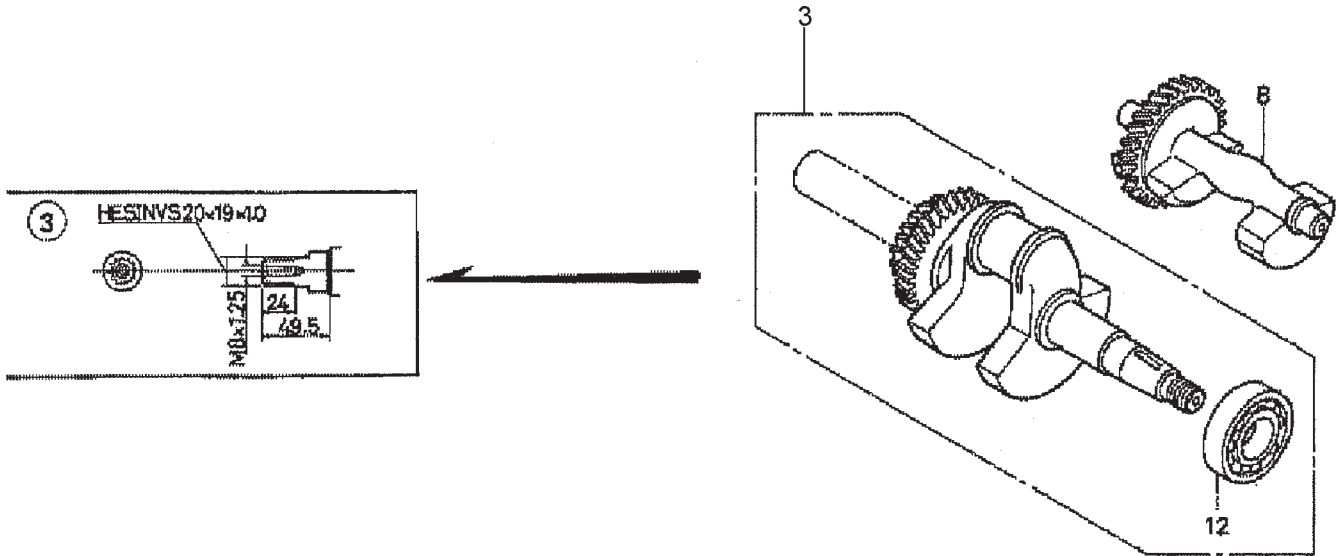
HONDA GX240K1HA2 ENGINE — CRANKCASE COVER ASSY.

CRANKCASE COVER ASSY.

<u>NO.</u>	<u>PART NO.</u>	<u>PART NAME</u>	<u>QTY.</u>	<u>REMARKS</u>
2	11400ZE2621	COVER ASSY., CRANKCASE (H-TYPE) (BALANCER)	1	INCLUDES ITEMS W/*
3	11381ZE2801	GASKET, CASE COVER	1	
4	15600ZG4003	CAP ASSY., OIL FILLER	1	INCLUDES ITEMS W/#
5	15600735003	CAP ASSY., OIL FILLER	1	INCLUDES ITEMS W/%
8%	15625ZE1003	GASKET, OIL FILLER CAP	1	
9#	15625ZE1003	GASKET, OIL FILLER CAP	1	
10	16510ZE2811	GOVERNOR ASSEMBLY (BALANCER)	1	INCLUDES ITEMS W/+
11* +	16511ZE2000	WEIGHT, GOVERNOR	2	
12* +	16512ZE2811	HOLDER, GOVERNOR WEIGHT	1	
13* +	16513ZE2000	PIN, GOVERNOR WEIGHT	2	
14*	16531ZE2000	SLIDER, GOVERNOR	1	
15*	90473147000	WASHER (6 X 16)	1	
16*	90602ZE1000	CLIP, GOVERNOR HOLDER	1	
17	90701HC4000	PIN, DOWEL (8 X 12)	2	
18*	9410106800	WASHER, PLAIN (6MM)	1	
19	957010803500	BOLT, FLANGE (8 X 35)	7	
20*	961006202000	BEARING, RADIAL BALL (6202)	1	
21*	961006204000	BEARING, RADIAL BALL (6204)	1	
22*	961006206000	BEARING, RADIAL BALL (6206)	1	
23*	961006302000	BEARING, RADIAL BALL (6302)	1	

HONDA GX240K1HA2ENGINE — CRANKSHAFT ASSY.

CRANKSHAFT ASSY.



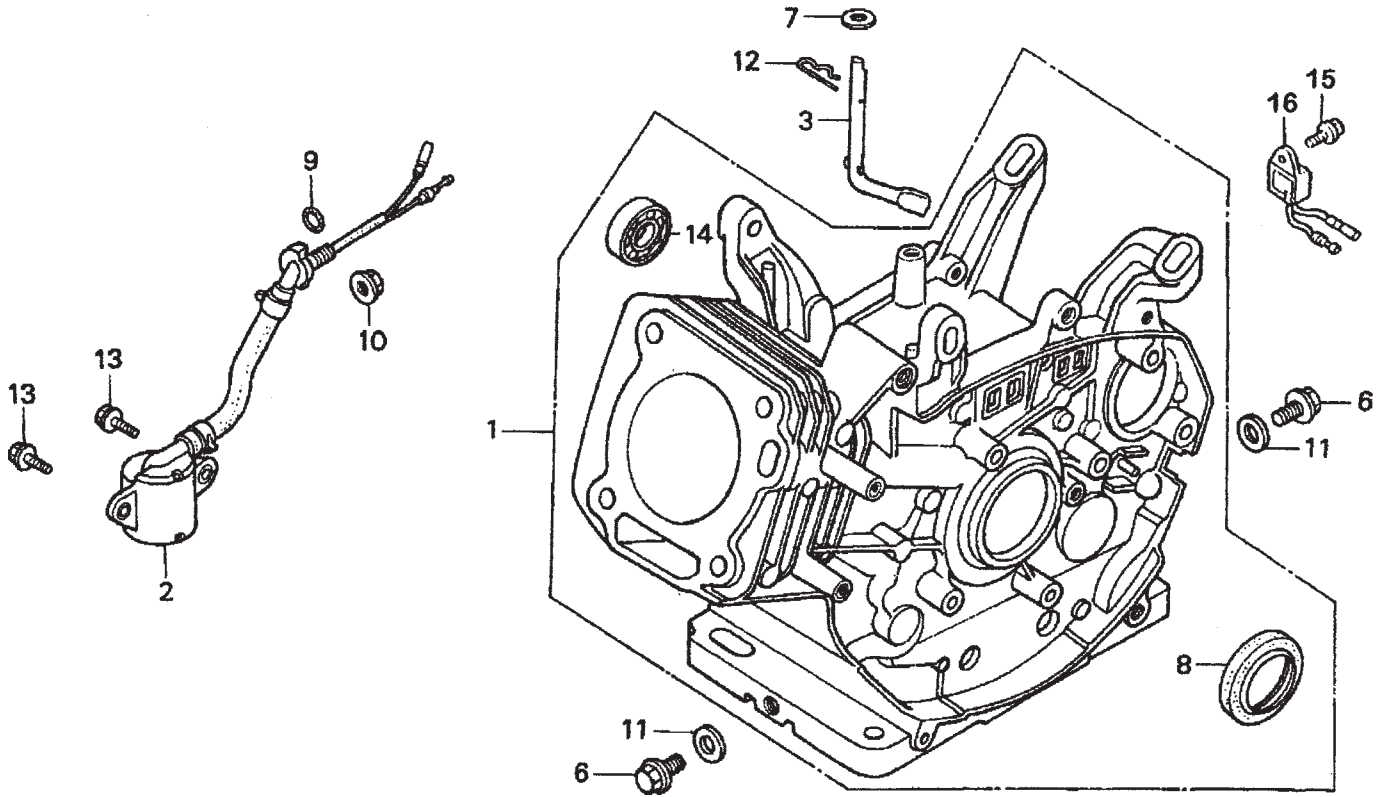
HONDA GX240K1HA2ENGINE — CRANKSHAFT ASSY.

CRANKSHAFT ASSY.

<u>NO.</u>	<u>PART NO.</u>	<u>PART NAME</u>	<u>QTY.</u>	<u>REMARKS</u>
3	13320ZE2611	CRANKSHAFT (L- TYPE)	1	
8	13351ZE2010	WEIGHT BALANCER	1	INCLUDES ITEM W/*
12*	961006206000	BEARING, RADIAL BALL (6206)	1	

HONDA GX240K1HA2 ENGINE — CYLINDER BARREL ASSY.

CYLINDER BARREL ASSY.



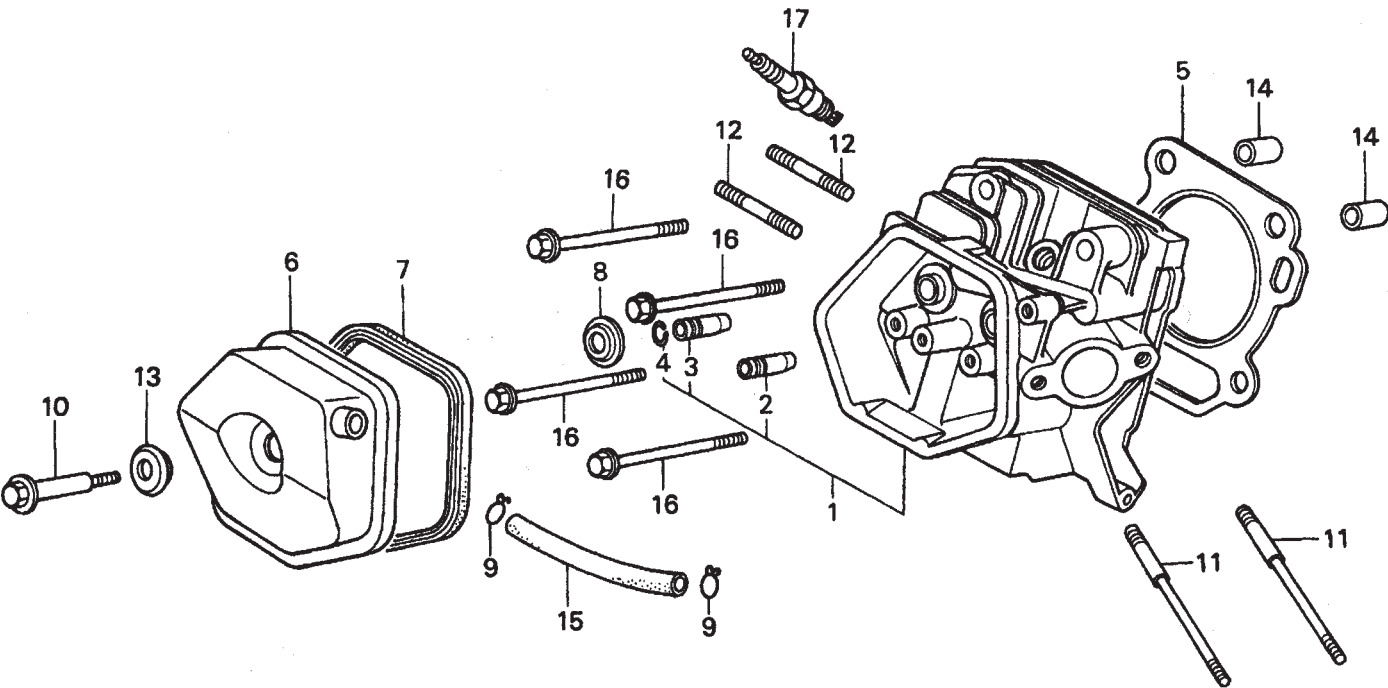
HONDA GX240K1HA2 ENGINE — CYLINDER BARREL ASSY.

CYLINDER BARREL ASSY.

<u>NO.</u>	<u>PART NO.</u>	<u>PART NAME</u>	<u>QTY.</u>	<u>REMARKS</u>
1	12000ZE2834	CYLINDER ASSY., BALANCER + OIL ALERT	1	INCLUDES ITEMS W/*
2	15510ZE2043	SWITCH ASSY., OIL LEVEL	1	
3	16541ZE2010	SHAFT, GOVERNOR ARM	1	
6	90131896650	BOLT, DRAIN PLUG	2	
7	90446KE1000	WASHER 8.2 X17X0.8	1	
8*	91201890003	OIL SEAL 30X46X8	1	
9	91353671003	O-RING 14MM ARAI	1	
10	9405010000	NUT FLANGE 10MM	1	
11	9410912000	WASHER, DRAIN PLUG 12MM	2	
12	9425110000	PIN, LOCK 10MM	1	
13	957010601200	BOLT, FLANGE 6X12	2	
14*	961006202000	BEARING, RADIAL BALL 6202	1	
15	90013883000	BOLT, FLANGE 6X12 CT200	1	
16	34150ZH7003	ALERT UNIT, OIL	1	

HONDA GX240K1HA2 ENGINE — CYLINDER HEAD ASSY.

CYLINDER HEAD ASSY.



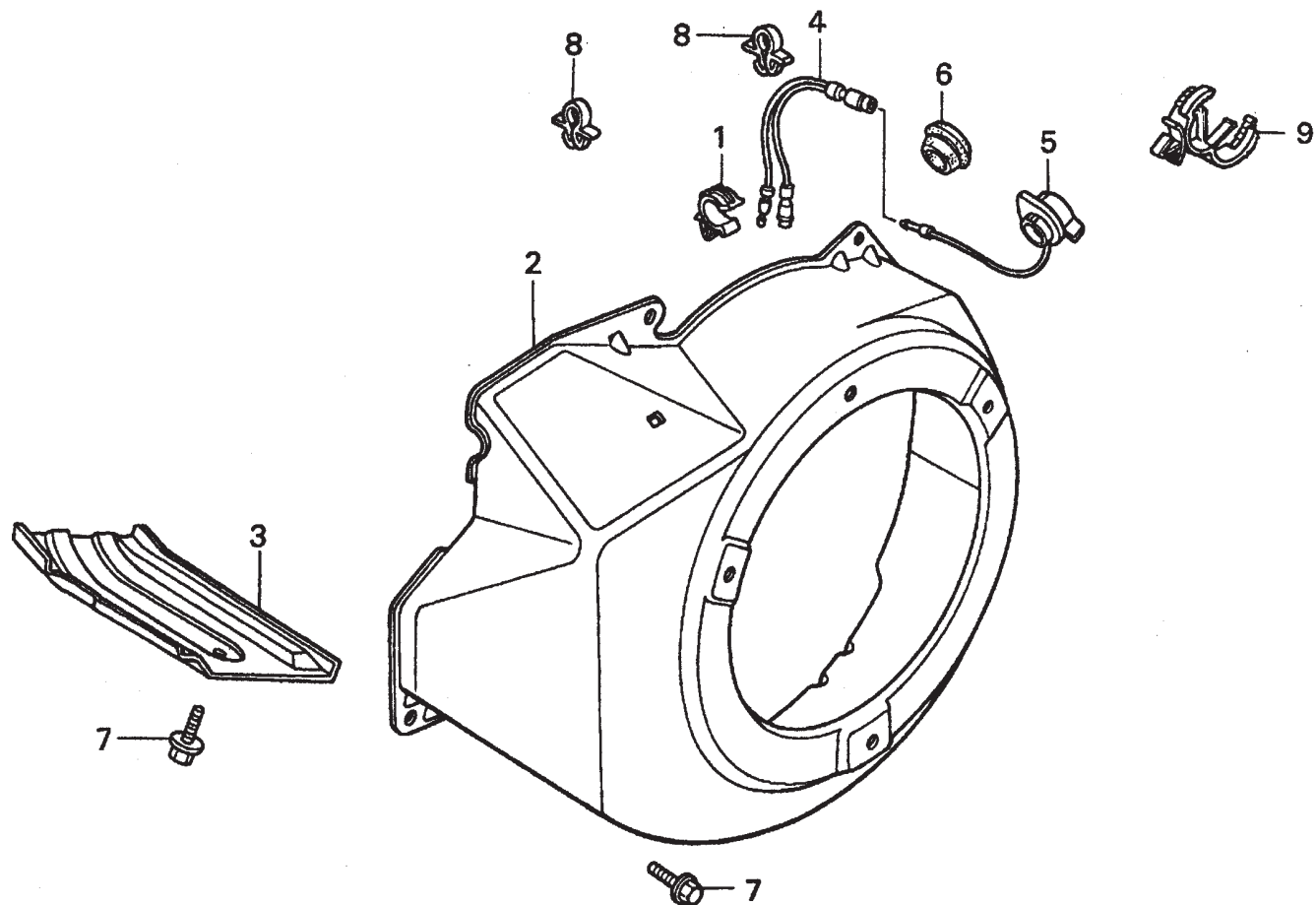
HONDA GX240K1HA2 ENGINE — CYLINDER HEAD ASSY.

CYLINDER HEAD ASSY.

<u>NO.</u>	<u>PART NO.</u>	<u>PART NAME</u>	<u>QTY.</u>	<u>REMARKS</u>
1	12200ZH9000	CYLINDER HEAD COMP.	1	INCLUDES ITEMS W/*
2*	12204ZE2306	GUIDE, VALVE, OS, OPTIONAL	1	
3*	12205ZE2305	GUIDE, EX. VALVE, OS, OPTIONAL	1	
4*	12216ZE2300	CLIP, VALVE GUIDE	1	
5	12251ZE2800	GASKET, CYLINDER HEAD	1	
6	12310ZE2020	COVER COMP., HEAD	1	
7	12391ZE2020	GASKET, CYLINDER HEAD COVER	1	
8	14775ZE2010	SEAT, VALVE SPRING	1	
10	90014ZE2000	BOLT, HEAD COVER	1	
11	90042ZE2000	BOLT, STUD 8X123	2	
12	90047ZE2000	BOLT, STUD 8X47	2	
13	90441ZE2010	WASHER COMP., HEAD COVER	1	
14	9430112200	PIN A, DOWEL 12X20	2	
15	950051100130M	BULK HOSE, VACUUM 11X1000, 11X100	1	
16	957011008000	BOLT, FLANGE 10X80	4	
17	9807956846	SPARK PLUG, BPR6ES, NGK	1	
17	9807956855	SPARK PLUG, W20EPR-U, DENSO	1	

HONDA GX240K1HA2 ENGINE — FAN COVER ASSY.

FAN COVER ASSY.



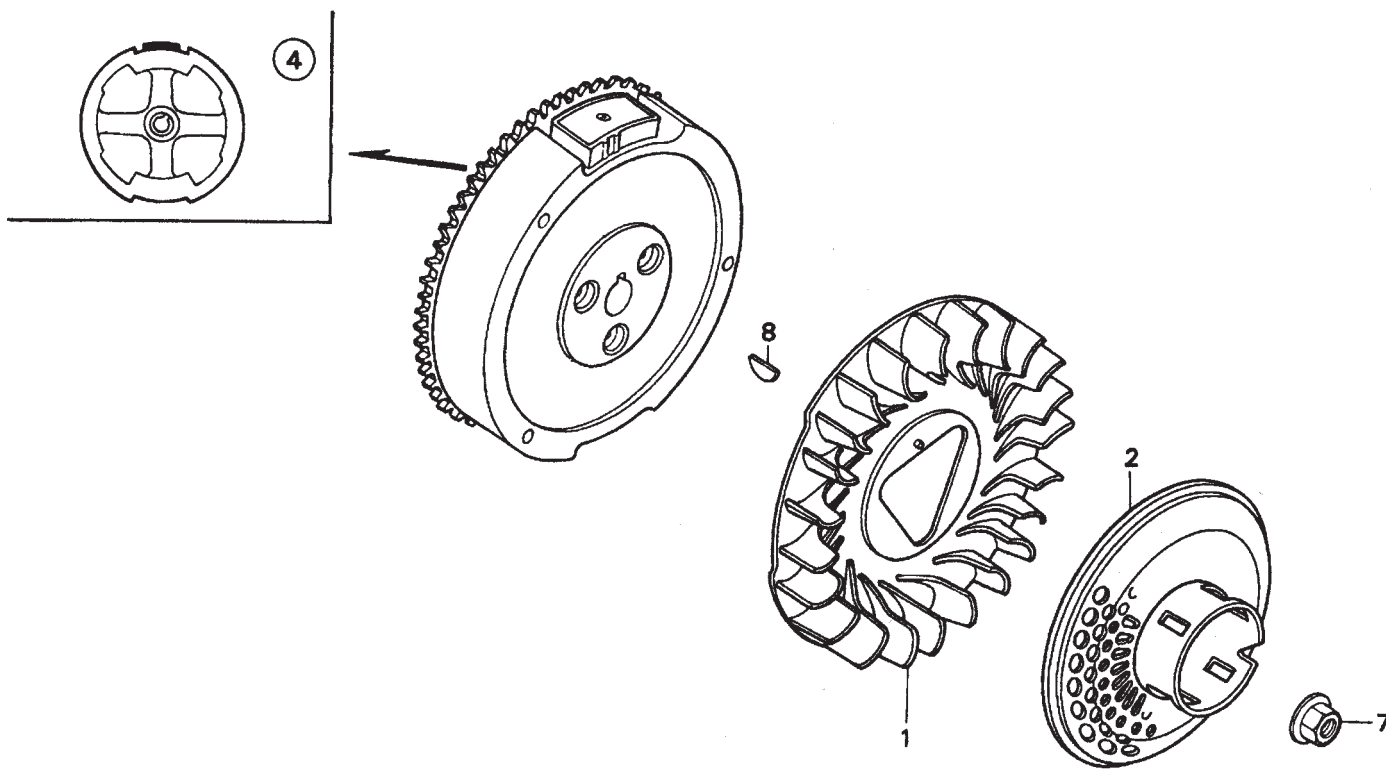
HONDA GX240K1HA2 ENGINE — FAN COVER ASSY.

FAN COVER ASSY.

<u>NO.</u>	<u>PART NO.</u>	<u>PART NAME</u>	<u>QTY.</u>	<u>REMARKS</u>
1	16731ZE2003	CLIP, TUBE	1	
2	19610ZE2010ZC	COVER COMP., FAN *NH1* BLACK	1	
3	19631ZE2D00	SHROUD	1	
4	32197ZH8003	SUB-HARNESS	1	
5	36100ZE1015	SWITCH ASSY., ENGINE STOP	1	
7	90013883000	BOLT, FLANGE 6X12, CT200	6	
9	90684ZA0601	CLIP, WIRE HARNESS	1	

HONDA GX240K1HA2 ENGINE — FLYWHEEL ASSY.

FLYWHEEL ASSY.



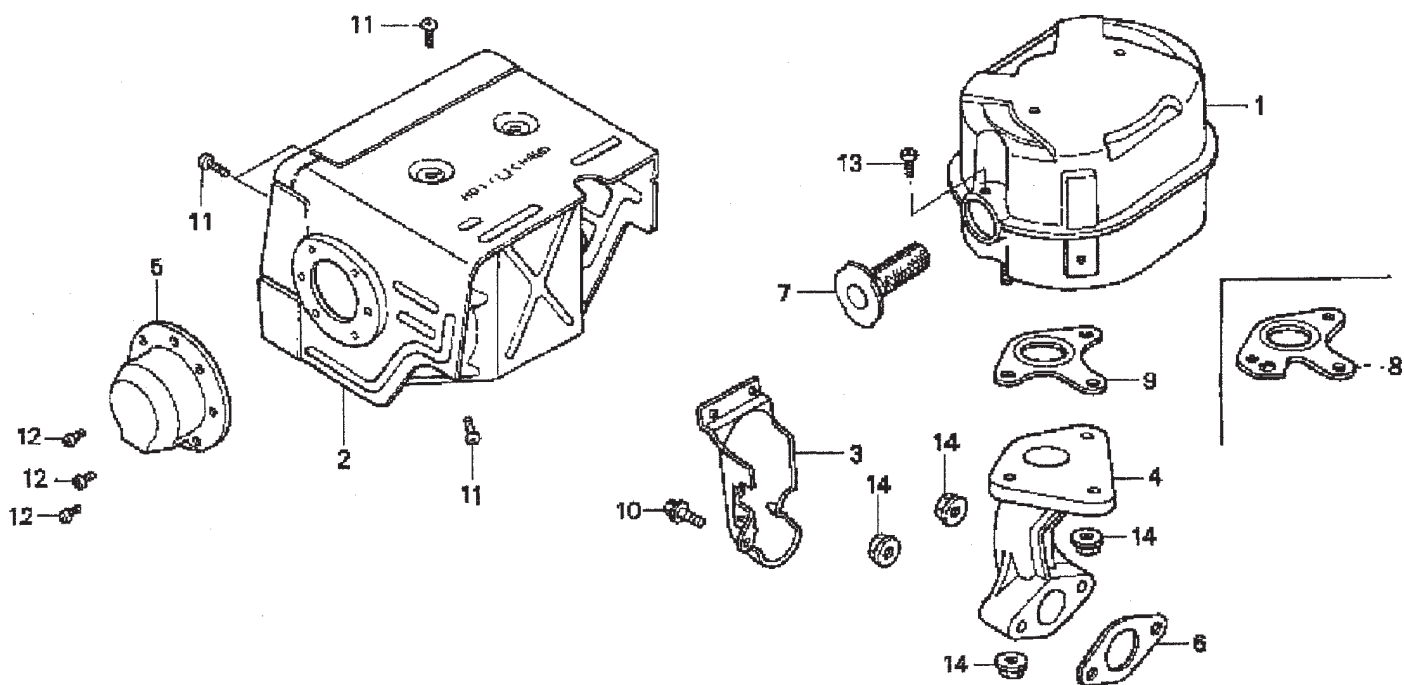
HONDA GX240K1HA2 ENGINE — FLYWHEEL ASSY.

FLYWHEEL ASSY.

<u>NO.</u>	<u>PART NO.</u>	<u>PART NAME</u>	<u>QTY.</u>	<u>REMARKS</u>
1	19511ZE2000	FAN, COOLING	1	
2	28450ZE2W11	PULLEY COMP., STARTER, SCREEN GRID	1	
4	31100ZE2010	FLYWHEEL COMP.	1	
7	90201ZE3V00	NUT, SPECIAL 16MM	1	
8	90741ZE2000	KEY, SPECIAL WOODRUFF 25X18	1	

HONDA GX240K1HA2 ENGINE — MUFFLER ASSY.

MUFFLER ASSY.



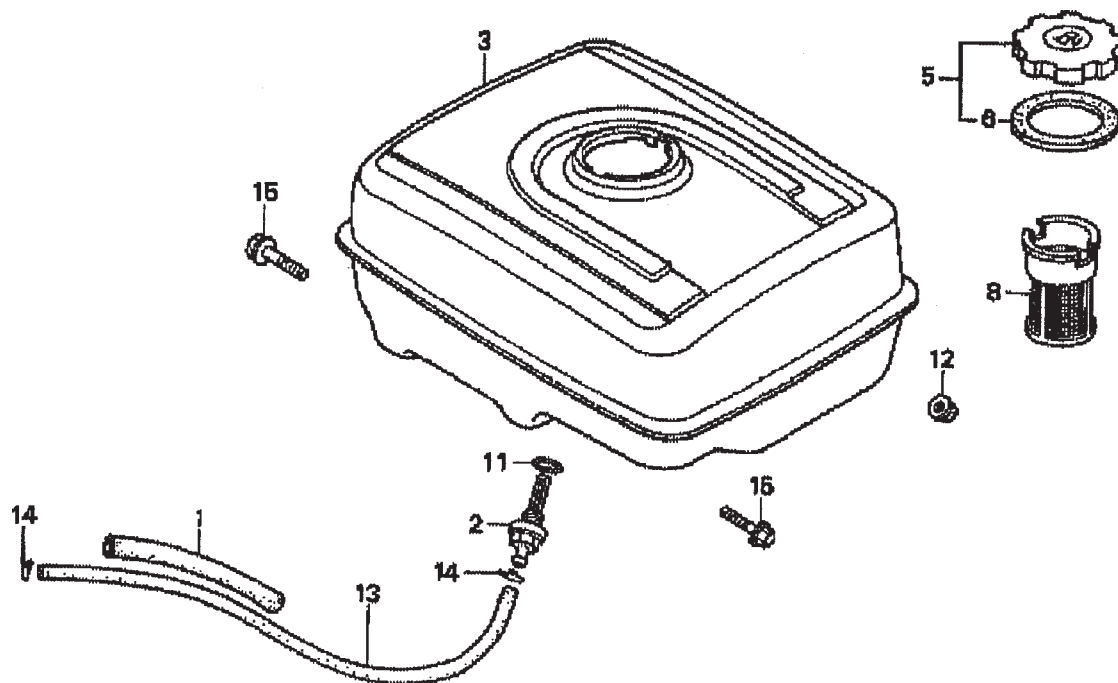
HONDA GX240K1HA2 ENGINE — MUFFLER ASSY.

MUFFLER ASSY.

<u>NO.</u>	<u>PART NO.</u>	<u>PART NAME</u>	<u>QTY.</u>	<u>REMARKS</u>
1	18310ZE2W00	MUFFLER	1	
2	18320ZE2W01	PROTECTOR, MUFFLER	1	
3	18323ZE2W00	PROTECTOR, EX. PIPE	1	
4	18330ZE2W00	PIPE, EX.	1	
5	18331ZE2810	CAP, MUFFLER	1	
6	18333ZE3800	GASKET, EX. PIPE	1	
7	18355ZE2010	ARRESTER, SPARK	1	
8	18381ZE2W10	GASKET, MUFFLER (ARRESTER)	1	
9	18381ZE2800	GASKET, MUFFLER	1	
10	90013883000	BOLT, FLANGE (6 X 12) (CT200)	1	
11	90050ZE1000	SCREW, TAPPING (5 X 8)	6	
12	90055ZE1000	SCREW, TAPPING (4 X 6)	3	
13	90050ZE1000	SCREW, TAPPING (5 X 8) (OPTIONAL)	1	
14	9405008000	NUT, FLANGE (8MM)	5	

HONDA GX240K1HA2 ENGINE — FUEL TANK ASSY.

FUEL TANK ASSY.



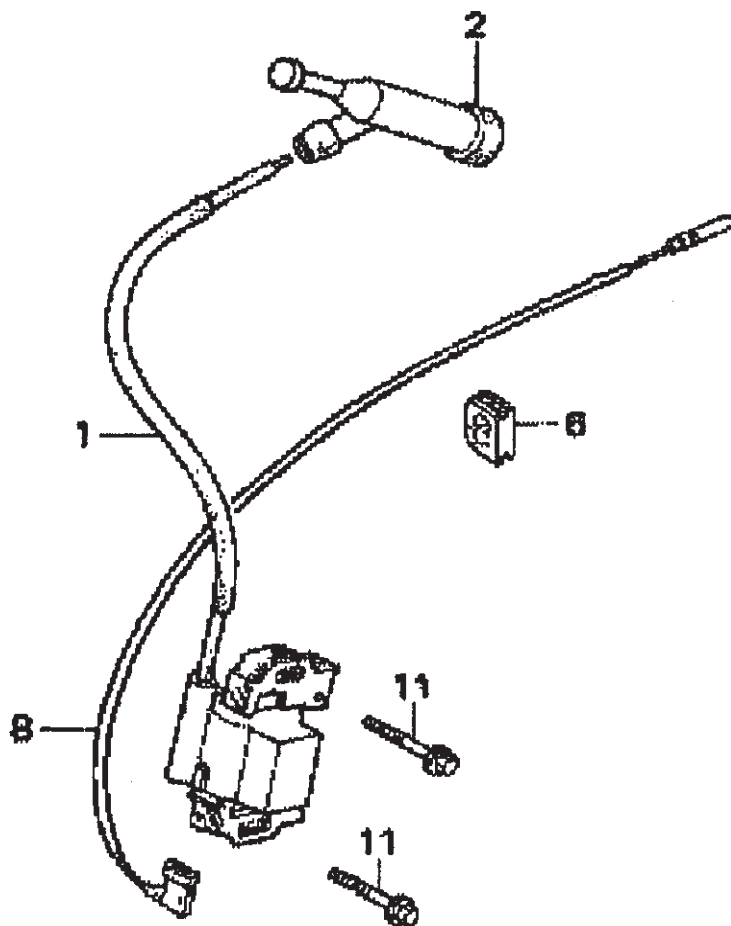
HONDA GX240K1HA2 ENGINE — FUEL TANK ASSY.

FUEL TANK ASSY.

<u>NO.</u>	<u>PART NO.</u>	<u>PART NAME</u>	<u>QTY.</u>	<u>REMARKS</u>
1	16854ZH8000	RUBBER SUPPORTER 107MM	1	
2	16955ZE1000	JOINT, FUEL TANK	1	
3	17510ZE2010ZD	TANK COMP., FUEL *NH1*, BLACK	1	
5	17620ZH7023	CAP COMP., FUEL FILLER	1	INCLUDES ITEMS W/*
6*	17631ZH7003	GASKET, FUEL FILLER CAP	1	
8	17672ZE2W01	FILTER, FUEL	1	
11	91353671003	O-RING 14MM, ARAI	1	
12	9405008000	NUT, FLANGE 8MM	2	
13	950014500360M	BULK HOSE, FUEL 4.5X3000, 4.5X222	1	
14	9500202080	CLIP, TUBE, B8	2	
15	957010802500	BOLT, FLANGE 8X25	2	

HONDA GX240K1HA2ENGINE — IGNITION ASSY.

IGNITION COIL ASSY.



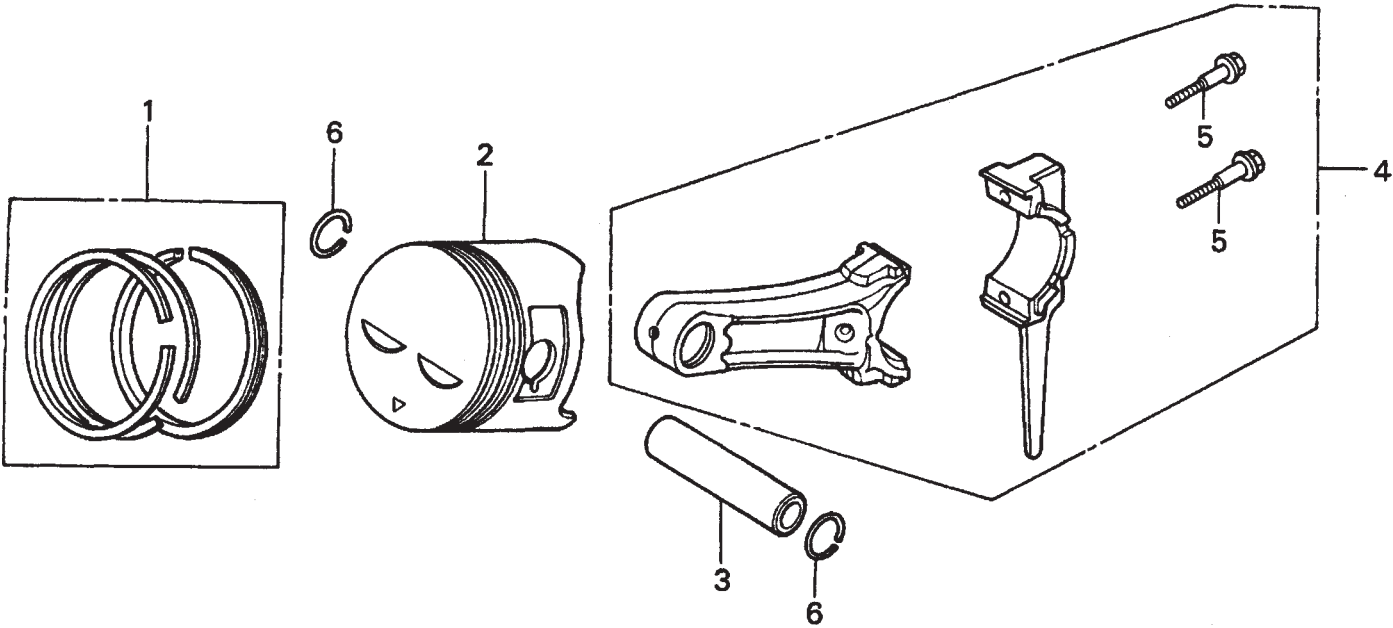
HONDA GX240K1HA2ENGINE — IGNITION ASSY.

IGNITION COIL ASSY.

<u>NO.</u>	<u>PART NO.</u>	<u>PART NAME</u>	<u>QTY.</u>	<u>REMARKS</u>
1	30500ZE2023	COIL ASSY., IGNITION	1	
2	30700ZE1013	CAP ASSY., NOISE SUPPRESSOR	1	
6	31512ZE2000	GROMMET, WIRE	1	
8	36101ZE1010	WIRE, STOP SWITCH 370MM	1	
11	90015883000	BOLT, FLANGE 6X28	2	

HONDA GX240K1HA2 ENGINE — PISTON ASSY.

PISTON ASSY.



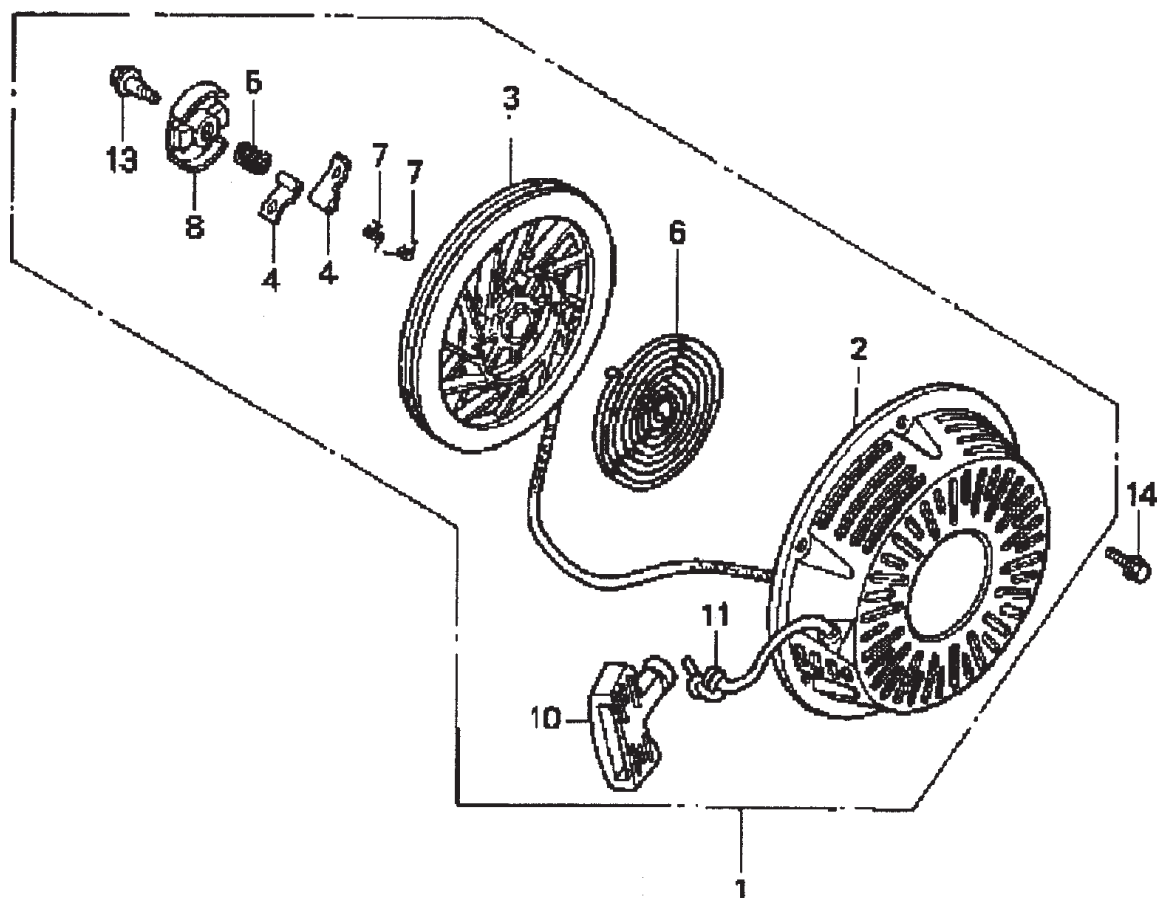
HONDA GX240K1HA2 ENGINE — PISTON ASSY.

PISTON ASSY.

<u>NO.</u>	<u>PART NO.</u>	<u>PART NAME</u>	<u>QTY.</u>	<u>REMARKS</u>
1	13010ZE2013	RING SET, PISTON, STD.	1	
1	13011ZE2013	RING SET, PISTON, OS 0.25, OPTIONAL	1	
1	13012ZE2013	RING SET, PISTON, OS 0.50, OPTIONAL	1	
1	13013ZE2013	RING SET, PISTON, 0.75, OPTIONAL	1	
2	13101ZE2W00	PISTON, STANDARD	1	
2	13102ZE2W00	PISTON, OS 0.25, OPTIONAL	1	
2	13103ZE2W00	PISTON, OS 0.50, OPTIONAL	1	
2	13104ZE2W00	PISTON, 0.75, OPTIONAL	1	
3	13111ZE2000	PIN, PISTON	1	
4	13200ZE2000	ROD ASSY., CONNECTING STANDARD	1	INCLUDES ITEMS W/*
4	13200ZE2305	ROD ASSY., CONNECTING, US 0.25, OPT.	1	
5*	90001ZE8000	BOLT, CONNECTING ROD	2	
6	90551ZE1000	CLIP, PISTON PIN 18MM	2	

HONDA GX240K1HA2 ENGINE — RECOIL STARTER ASSY.

RECOIL STARTER ASSY.



HONDA GX240K1HA2 ENGINE — RECOIL STARTER ASSY.

RECOIL STARTER ASSY.

<u>NO.</u>	<u>PART NO.</u>	<u>PART NAME</u>	<u>QTY.</u>	<u>REMARKS</u>
1	28400ZE2W01ZB	STARTER ASSY., RECOIL *NH1*, BLK	1	INCLUDES ITEMS W/*
2*	28410ZE2W01ZB	CASE COMP., RECOIL STARTER *NH1*, BLK	1	
3*	28421ZE2W01	PULLEY, RECOIL STARTER	1	
4*	28422ZE2W01	RATCHET, STARTER	2	
5*	28441ZE2W01	SPRING, FRICTION	1	
6*	28442ZE2W01	SPRING, STARTER RETURN	1	
7*	28443ZE2W01	SPRING RATCHET	2	
8*	28444ZE2W01	RETAINER, SPRING	1	
10*	28461ZE2W02	GRIP, STARTER	1	
11*	28462ZE2W11	ROPE, RECOIL STARTER	1	
13*	90004ZE2W01	SCREW, CENTER	1	
14	90008ZE2003	BOLT, FLANGE 6X10	3	

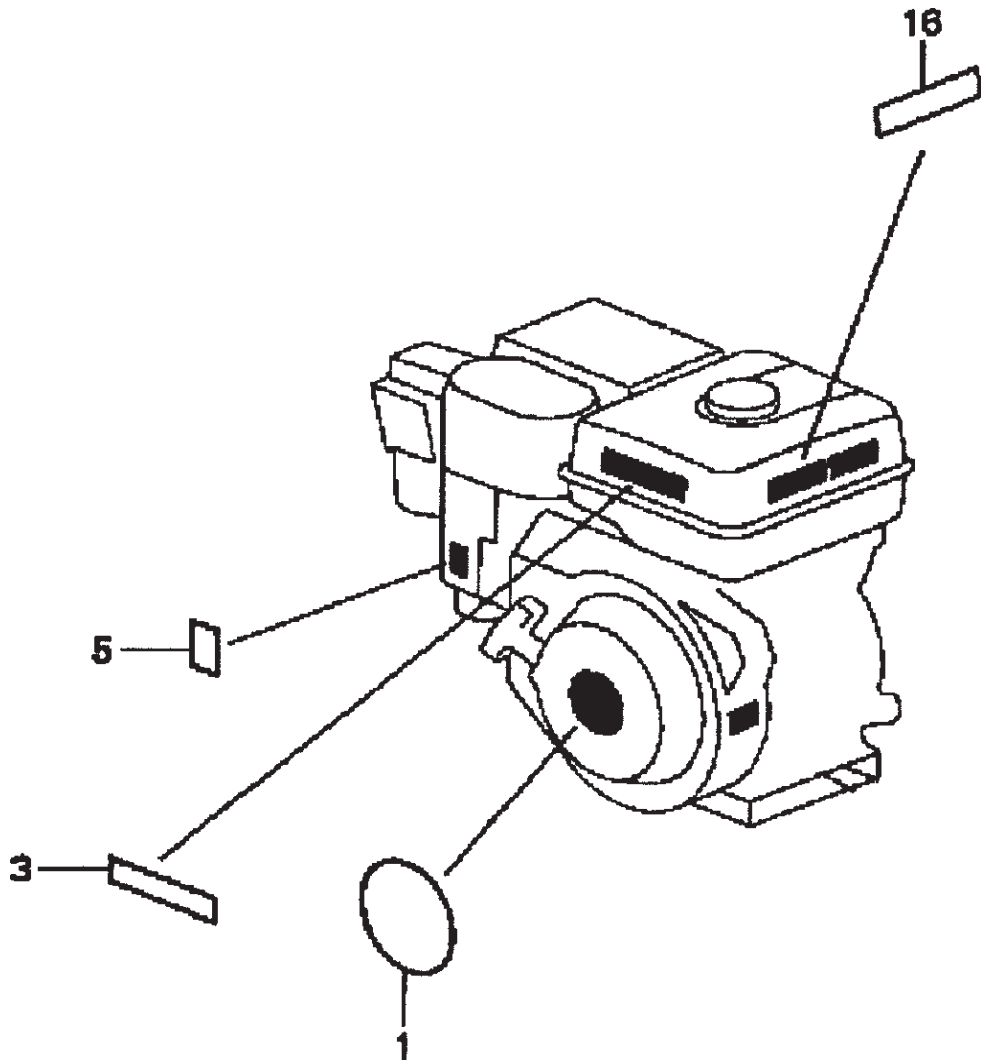
HONDA GX240K1HA2 ENGINE — GEAR REDUCTION ASSY.

GEAR REDUCTION ASSY.

<u>NO.</u>	<u>PART NO.</u>	<u>PART NAME</u>	<u>QTY.</u>	<u>REMARKS</u>
1	11500ZE2620	COVER ASSY, REDUCTION CASE	1	INCLUDES ITEMS W/
2	11521ZE2800	GASKET, CHAIN CASE COVER	1	
3	22103ZE2620	GEAR, PRIMARY DRIVE (17T)	1	
4	23220ZE2621	COUNTERSHAFT	1	
5	23710ZE2621	SHAFT, P.T.O. (H- TYPE)	1	
6	90401ZE2620	SHIM A (OPTIONAL)	AR	
7	90402ZE2620	SHIM B (OPTIONAL)	AR	
8	90473842000	WASHER (8MM)	1	
9	90745ZE2600	KEY (6.3 X 6.3 X 43)	1	
10	91201890003	OIL SEAL (30 X 46 X 8)	1	
11	9430108140	PIN A, DOWEL (8 X 14)	2	
12	957010802500	BOLT, FLANGE (8 X 25)	1	
13	957010804000	BOLT, FLANGE (8 X 40)	6	
14	961006206000	BEARING, RADIAL BALL (6206)	1	
15	961006302000	BEARING, RADIAL BALL (6302)	1	

HONDA GX240K1HA2 ENGINE — LABEL ASSY.

LABEL ASSY.



HONDA GX240K1HA2 ENGINE — LABEL ASSY.

LABELS ASSY.

<u>NO.</u>	<u>PART NO.</u>	<u>PART NAME</u>	<u>QTY.</u>	<u>REMARKS</u>
1	87521ZE2W01	EMBLEM, INTERNAL	1	
2	87522ZE1810	MARK, CAUTION, EXTERNAL	1	
3	87522ZH9000	LABEL, CAUTION	1	
5	87528ZE2810	MARK, CHOKE, EXTERNAL	1	
15	87586ZH7W00	LABEL, FUEL CAUTION	1	
16	87532ZH8810	MARK, OIL ALERT	1	