

# OPERATION & PARTS MANUAL



*SideWinder*

## **MODEL HS81 CUT-OFF SAW**

Revision #4 (09/12/05)

THIS MANUAL MUST ACCOMPANY THE EQUIPMENT AT ALL TIMES.

## HS81 CUT-OFF SAW — TABLE OF CONTENTS

Proposition 65 Warning .....	2	Carburetor Mounting Assembly .....	56-57
Table Of Contents .....	4	Carburetor Assembly .....	58-59
Parts Ordering Procedures .....	5	Crankshaft and Piston Assembly .....	60-61
Safety Message Alert Symbols .....	6-7	Sprinkler Kit Assembly .....	62-63
Rules For Safe Operation .....	8-11	Tools .....	64-65
Specifications (Saw/Engine) .....	12	Recommended Diamond Blades .....	66
Decal Placement .....	13		

Terms and Conditions of Sale — Parts .....	67
--	----

## MULTIQUIP — HS81 CUT-OFF SAW

Controls & Components .....	14-15
Saw Assembly Instructions .....	16-20
Water Kit Installation Procedure .....	21
Blades .....	22
Initial Start-Up/Operation .....	23-24
Maintenance .....	25
Troubleshooting (Blade) .....	26
Troubleshooting (Engine) .....	27-28
Filter Kits .....	29
Explanation of Codes in Remarks Column .....	30
Suggested Spare Parts .....	31
Muffler Assembly .....	32-33
Recoil Start Assembly .....	34-35
Crankcase (Clutch Side) Assembly .....	36-37
Crankcase (Flywheel) Assembly .....	38-39
V-belt Cover (Clutch Side) Assembly .....	40-41
V-Belt Cover (Pulley) Blade Guard Assembly ....	42-43
Fuel, Lifting Handle, and Roller Assembly .....	44-45
Throttle Linkage Assembly .....	46-47
Flywheel Cover Assembly .....	48-49
Flywheel Assembly .....	50-51
Ignition Assembly .....	52-53
Air Filter Assembly .....	54-55

For *Side Winder* HS Series Cut-Off Saws

□ HS81

### DRY FILTER KITS



#### HS81FK1

[ Includes 1 ea.]

HS52010141 - Foam Filter

HS018600125 - Paper Filter

HS018600056A - Inner Filter

#### HS81FK5

[ Includes 5 ea.]

HS52010141 - Foam Filter

HS018600125 - Paper Filter

HS018600056A - Inner Filter

#### HS81FK10

[ Includes 10 ea.]

HS52010141 - Foam Filter

HS018600125 - Paper Filter

HS018600056A - Inner Filter

### WET FILTER



\* Replaces *DRY* Air Filter Canister When Using Water & Standard Water Kit (provided)



#### HS099900778A

[ Includes 1 ea.]

Water Filter fits both HS62 & HS81

# HS81 CUT-OFF SAW — SUGGESTED SPARE PARTS

## SUGGESTED SPARE PARTS

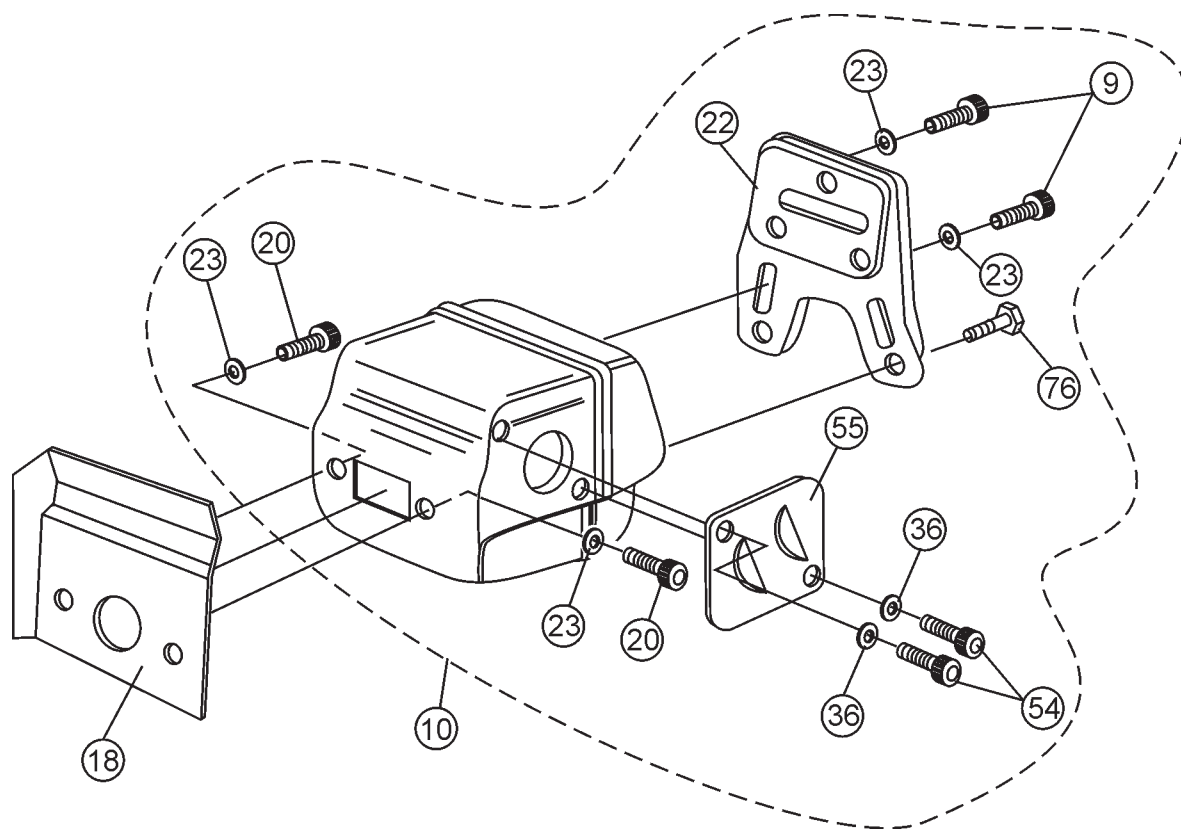
### HS81 SIDEWINDER CUT-OFF SAW

#### *1 to 3 Units*

Qty.	P/N	Description
1 .....	HS52012047 .....	STARTER ASSEMBLY
3 .....	HS098000079 .....	ROPE, STARTER
1 .....	HS52010080 .....	HANDLE, ROPE
1 .....	HS098000060A .....	SPRING & CASE, STARTER
6 .....	HS3055101 .....	SPARK PLUG
1 .....	HS097000132 .....	CLUTCH ASSEMBLY
1 .....	HS52010057 .....	FUEL CAP, W/O-RING
3 .....	HS50010218 .....	FILTER, FUEL
1 .....	HS52010092 .....	THROTTLE TRIGGER LEVER
1 .....	HS52010077 .....	THROTTLE LOCK LEVER
1 .....	HS52010078 .....	CHOKE LEVER
1 .....	HS52010022A .....	COVER, BELT GUARD
3 .....	HS3918013 .....	WASHER, BELT COVER
3 .....	HS3914010 .....	NUT, BELT COVER
3 .....	HS018100180 .....	V-BELT
2 .....	HS018600235 .....	FLANGE, ARBOR
2 .....	HS018600236A .....	FLANGE, ARBOR
2 .....	HS3806067 .....	SCREW, ARBOR
2 .....	HS018500061 .....	WASHER, ARBOR
2 .....	HS52010062 .....	KNOB, ADJ. GUIDE
2 .....	HS3833080 .....	WASHER, ADJ. GUIDE
2 .....	HS52010012 .....	SPACER, ADJ. GUIDE
2 .....	HS52010013 .....	LOCK, GUIDE BLADE GUARD
1 .....	HS018600273A .....	FLANGE, PRE-FILTER CAP
1 .....	HS52010014A .....	SUPPORT FILTER
2 .....	HS3802002 .....	SCREW, FILTER SUPPORT
1 .....	HS330000010 .....	O-RING, FLANGE PRE-FILTER
1 .....	HS018600090A .....	GASKET, AIR FILTER LOWER
18 .....	HS018600125 .....	AIR FILTER
6 .....	HS018600056A .....	FILTER, AIR INNER
18 .....	HS52010141 .....	PRE-FILTER, FOAM
3 .....	HS4191240 .....	TOOL KIT
3 .....	HS099900778A .....	WET, AIR FILTER
3 .....	HS52010082 .....	BREATHING ASSEMBLY
1 .....	00325 .....	CASE, OIL 2-STROKE NON-SMOKE - 36 BOTTLES

## HS81 CUT-OFF SAW — MUFFLER ASSY.

MUFFLER ASSY.



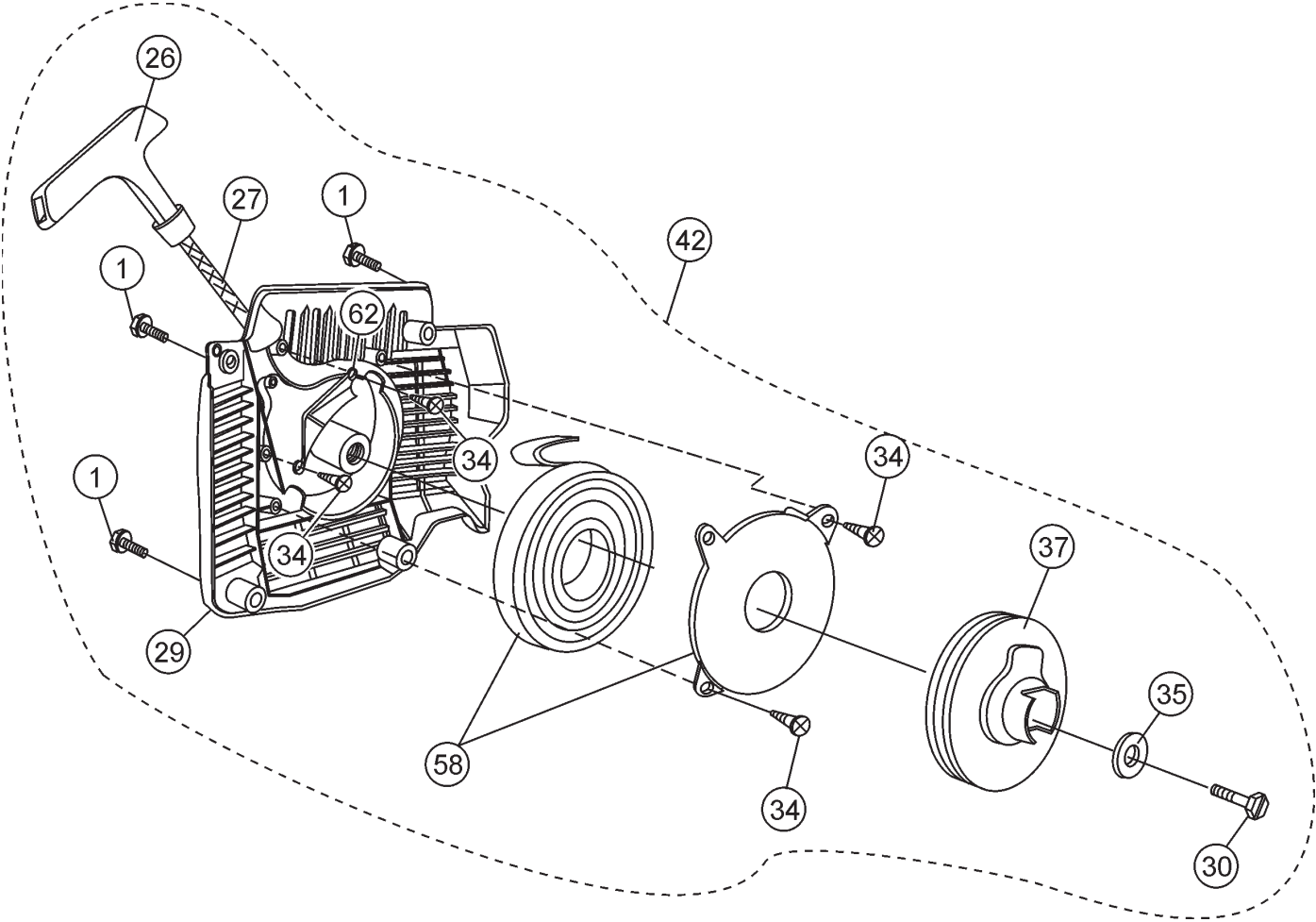
## HS81 CUT-OFF SAW — MUFFLER ASSY.

### MUFFLER ASSY.

<u>NO.</u>	<u>PART NO.</u>	<u>PART NAME</u>	<u>QTY.</u>	<u>REMARKS</u>
9*	HS53801052	SCREW	3	
10	HS52012053	MUFFLER ASSEMBLY .....	1	INCLUDES ITEMS W/*
18	HS097000094A	GASKET, MUFFLER	1	
20*	HS3801045	SCREW	2	
22*	HS097000342	COVER, MUFFLER	1	
23*	HS3033074	WASHER	5	
36*	HS3833073	WASHER	2	
54*	HS005100913	SCREW	2	
55*	HS098000133	DEFLECTOR, MUFFLER	1	
76	HS097000092	SCREW	2	

## HS81 CUT-OFF SAW — RECOIL START ASSY.

## RECOIL START ASSY.



## HS81 CUT-OFF SAW — RECOIL START ASSY.

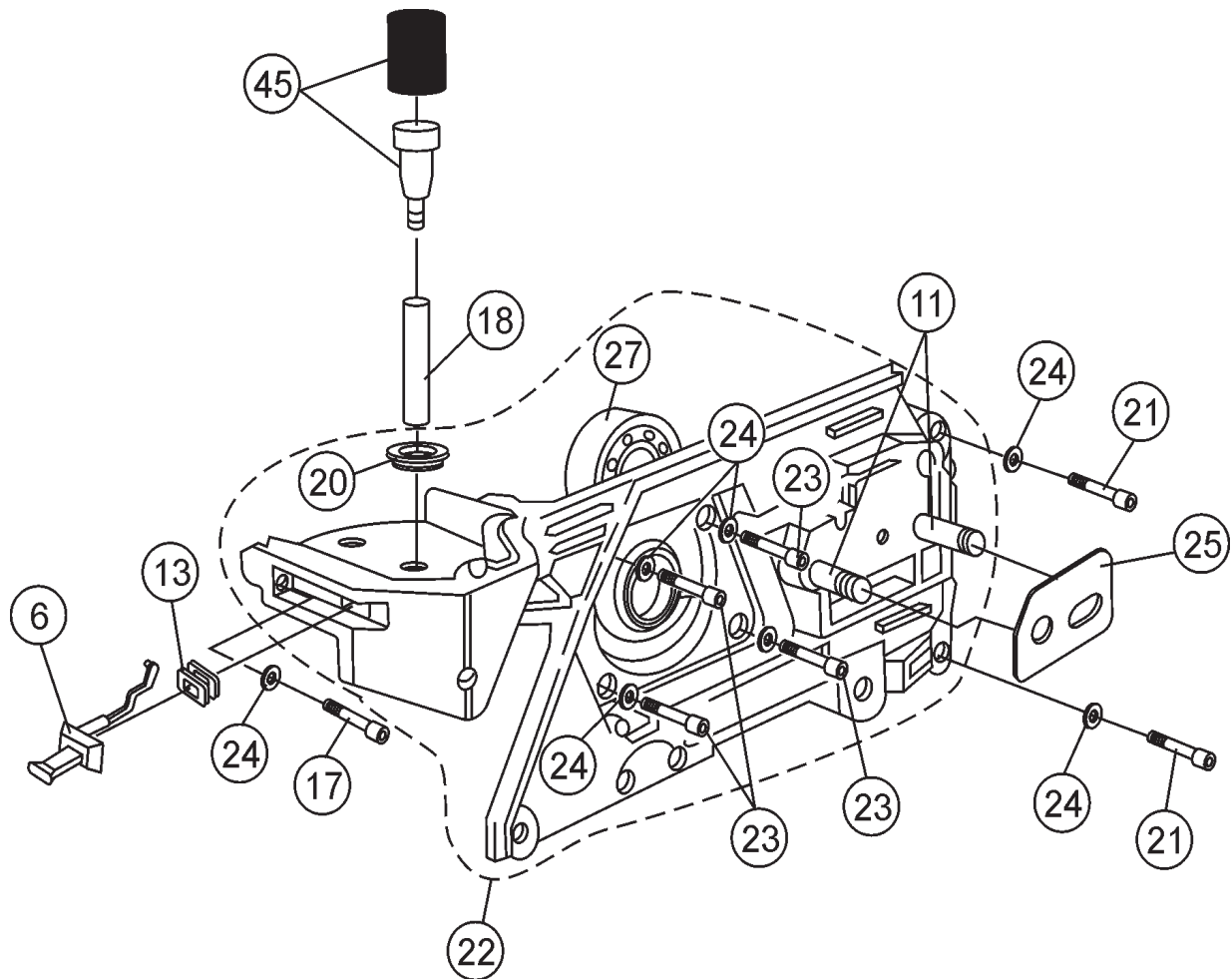
### RECOIL START ASSY.

<u>NO.</u>	<u>PART NO.</u>	<u>PART NAME</u>	<u>QTY.</u>	<u>REMARKS</u>
1*	HS097000092	SCREW	4	
26*	HS52010080	HANDLE, STARTER ROPE	1	
27*	HS098000079	ROPE, STARTER	1	
29*	HS52010184	CASE, STARTER	1	
30*	HS3908036	SCREW	1	
34*	HS3960017	SCREW	4	
35*	HS3918006	WASHER	1	
37*	HS097000041	PULLEY, STARTER	1	
42	HS52012047	STARTER ASSEMBLY .....	1	INCLUDES ITEMS W/*
58*	HS098000060A	SPRING AND CASE, STARTER	1	
62*	HS52010180	COVER, STARTER SPRING	1	



## HS81 CUT-OFF SAW — CRANKCASE (CLUTCH SIDE) ASSY.

## CRANKCASE (CLUTCH SIDE) ASSY.



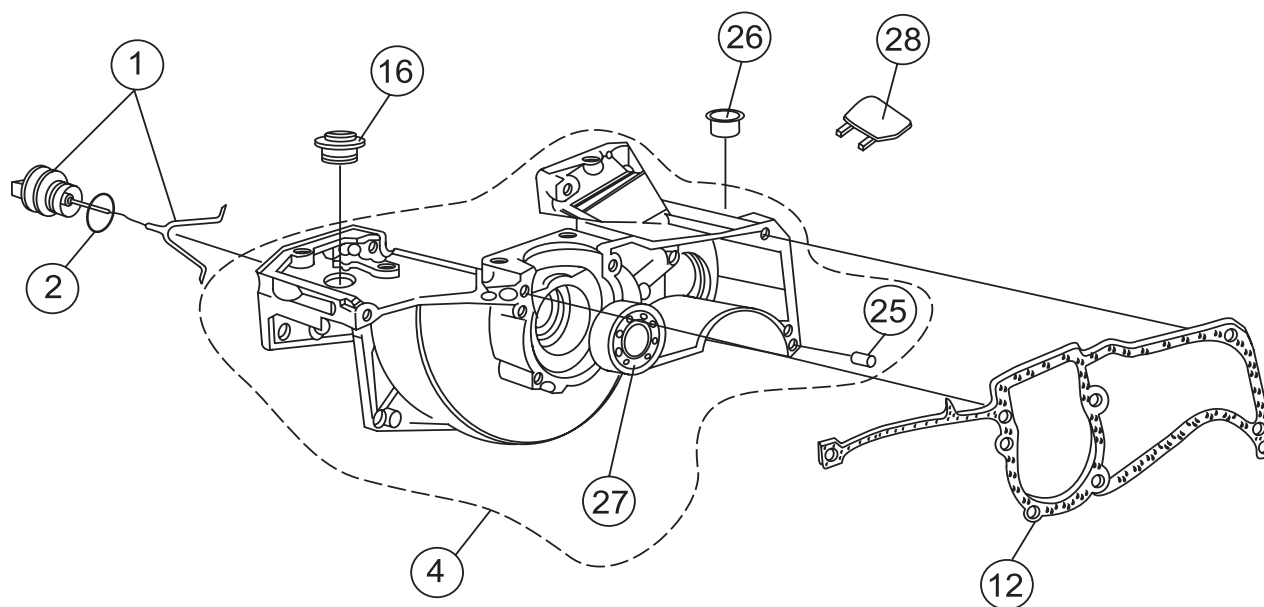
## HS81 CUT-OFF SAW — CRANKCASE (CLUTCH SIDE) ASSY.

### CRANKCASE (CLUTCH SIDE) ASSY.

<u>NO.</u>	<u>PART NO.</u>	<u>PART NAME</u>	<u>QTY.</u>	<u>REMARKS</u>
6	H52010078	CHOKE LEVER	1	
11*	HS097000080 A	BAR STUD, CRANKCASE	2	
13	HS097000057	GROMMET	1	
17	HS005100987	SCREW	1	
18	HS093000448	FUEL LINE	1	
20*	HS52010117	GROMMET	1	
21	HS006100303	SCREW	1	
22	HS52012018	CRANKCASE W/BEARING, (CLUTCH SIDE) .....	1 .....	INCLUDES ITEMS W/*
23	HS3801015	SCREW	4	
24	HS3833073	WASHER	7	
25	HS52010312	SHIELD	1	
27*	HS3034012	BEARING, CRANKCASE	1	
45	HS52010082	BREATHER ASSEMBLY	1	

## HS81 CUT-OFF SAW — CRANKCASE (FLYWHEEL SIDE) ASSY.

CRANKCASE (FLYWHEEL SIDE) ASSY.



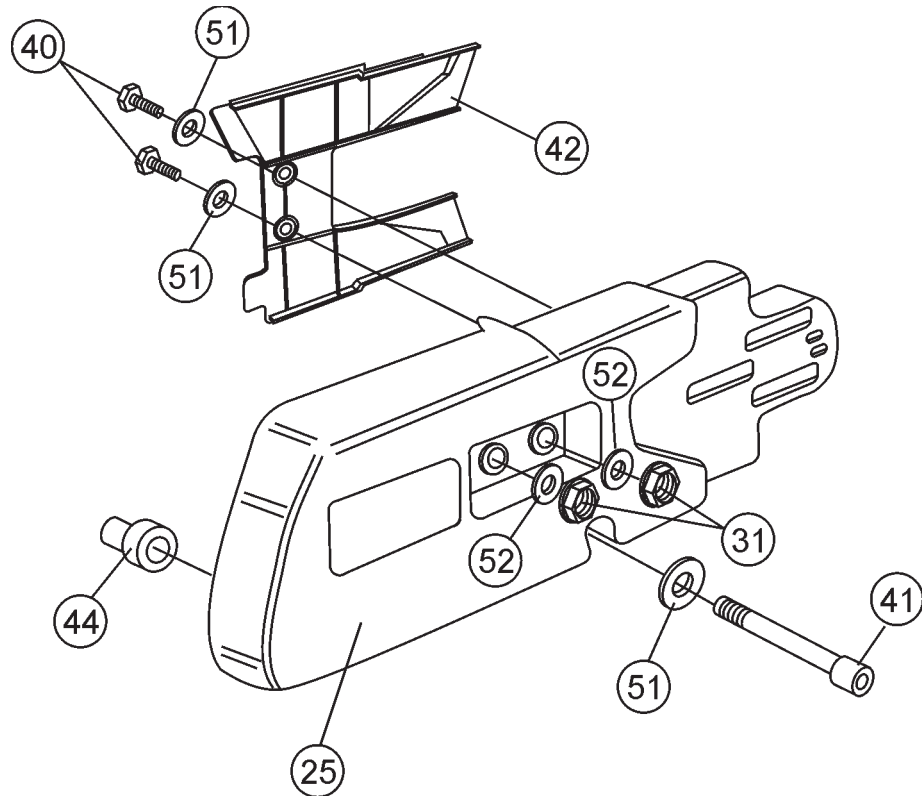
## HS81 CUT-OFF SAW — CRANKCASE (FLYWHEEL SIDE) ASSY.

CRANKCASE (FLYWHEEL SIDE) ASSY.

<u>NO.</u>	<u>PART NO.</u>	<u>PART NAME</u>	<u>QTY.</u>	<u>REMARKS</u>
1	HS52010057	CAP, FUEL W/O-RING .....	1 .....	INCLUDES ITEMS W/*
2*	HS09900090	O-RING, FUEL CAP .....	1 .....	
4	HS097000497	CRANKCASE, W/ BEARING (FLYWHEEL SIDE) ..	1 .....	INCLUDES ITEMS W/+
12	HS097000009A	GASKET, CRANKCASE	1	
16	HS52020014	GROMMET	1	
25+	HS3023008	PIN	2	
26	HS52010143	PLUG	1	
27+	HS3034012	BEARING, CRANKCASE	1	

## HS81 CUT-OFF SAW — V-BELT COVER (CLUTCH SIDE) ASSY.

### V-BELT COVER (CLUTCH SIDE) ASSY



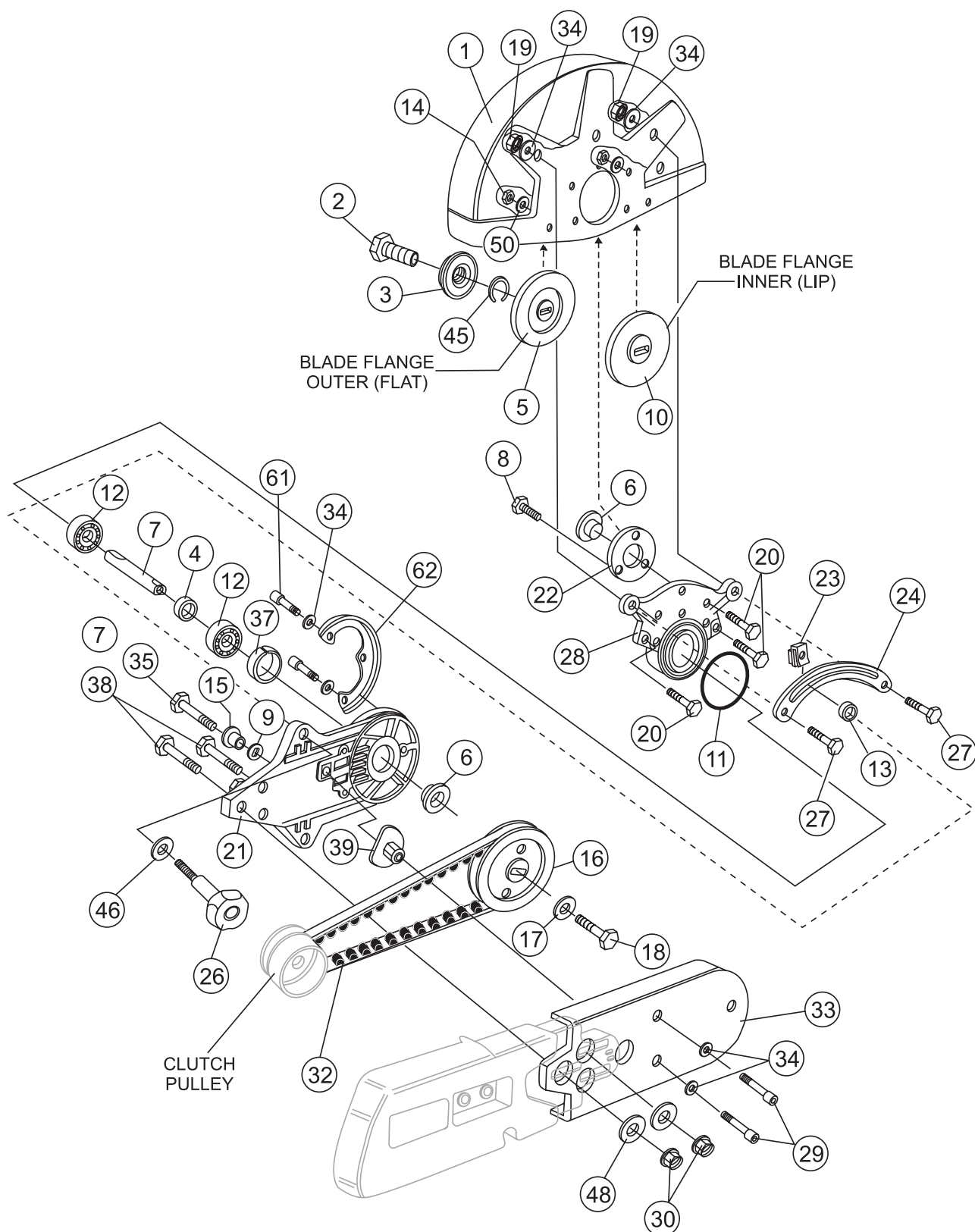
## HS81 CUT-OFF SAW — V-BELT COVER (CLUTCH SIDE) ASSY.

V-BELT COVER (CLUTCH SIDE) ASSY.

<u>NO.</u>	<u>PART NO.</u>	<u>PART NAME</u>	<u>QTY.</u>	<u>REMARKS</u>
25	HS52012005	V-BELT COVER, (CLUTCH SIDE)	1	
31	HS50010148	NUT	2	
40	HS3806021	SCREW	2	
41	SHHS3801037	SCREW	1	
42	HS52010023	GUARD, BELT INNER	1	
44	HS006000300	BUSHING	1	
51	HS3833073	WASHER	1	
52	HS3916008	WASHER	2	

## HS81 CUT-OFF SAW — V-BELT COVER(PULLEY)/BLADE GUARD ASSY.

V-BELT COVER (PULLEY-SIDE)/BLADE GUARD ASSY.



# HS81 CUT-OFF SAW — V-BELT COVER(PULLEY)/BLADE GUARD ASSY.

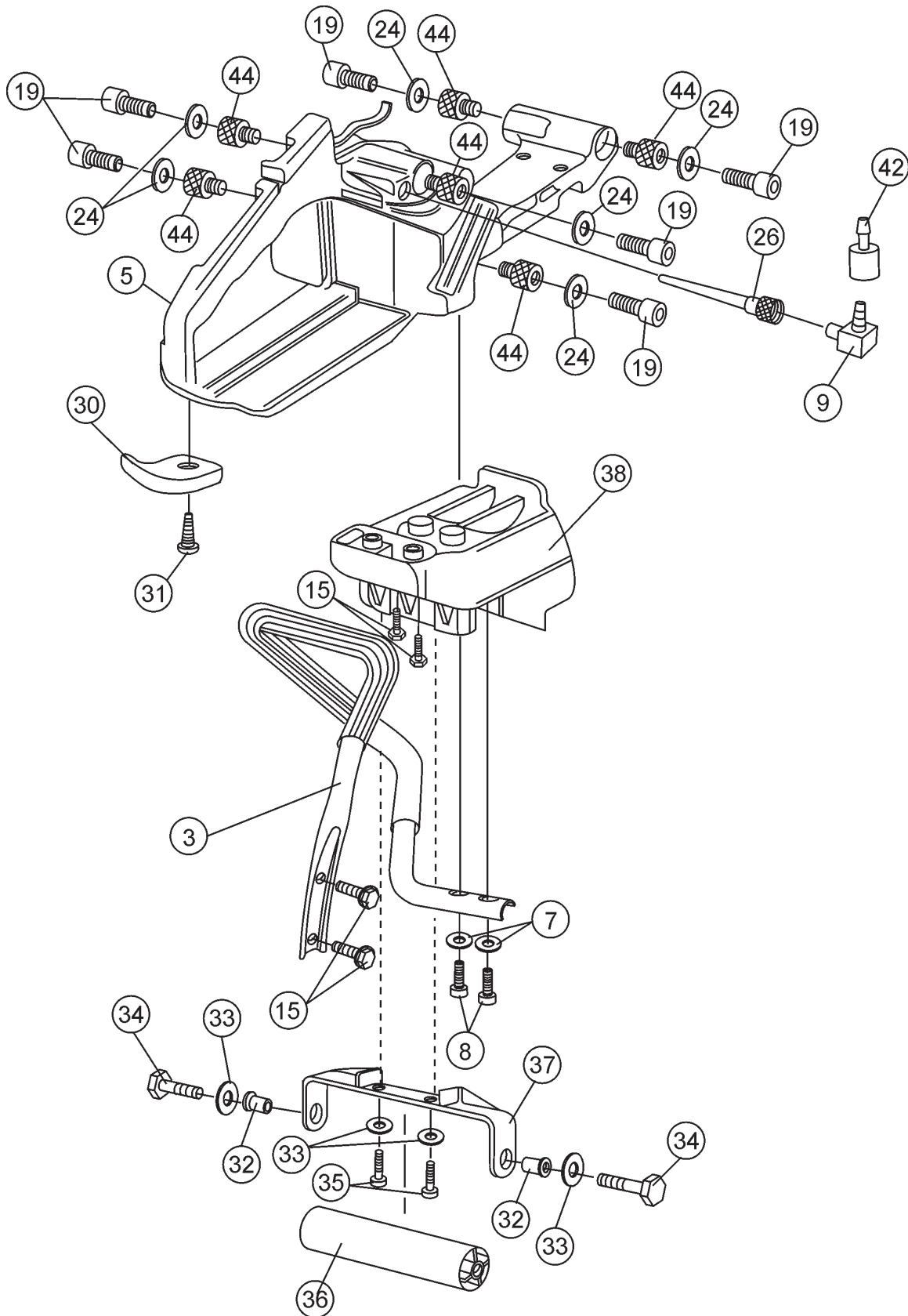
V-BELT COVER (PULLEY-SIDE)/BLADE GUARD ASSY.

<u>NO.</u>	<u>PART NO.</u>	<u>PART NAME</u>	<u>QTY.</u>	<u>REMARKS</u>
1	HS52010026	BLADE COVER 14-INCH	1	
2	HS3806067	SCREW	1	
3	HS018500061	WASHER	1	
4	HS52010045	SPACER	1	
5	HS018600235	FLANGE, ARBOR (OUTER)	1	
6	HS52010044	SPACER	1	
7	HS018600019	SHAFT	1	
8	HS3806022	SCREW	3	
9	HS005000343	WASHER	1	
10	HS018600236	FLANGE, ARBOR (INNER)	1	
11	HS018100029	O-RING, BLADE GUARD SUPPORT	1	
12	HS3035019	BEARING	2	
13	HS52010012	SPACER	1	
14	HS094000251	NUT	5	
15	HS52010039	SPACER	1	
16	HS01860004A	PULLEY, BELT	1	
17	HS3918013	WASHER	1	
18	HS3806065	SCREW	1	
19	HS3818016	NUT	2	
20	HS3806021	SCREW	5	
21	HS52010212	ARM	1	
22	HS52010043	FLANGE	1	
23	HS52010013	LOCK, GUIDE BLADE GUARD	1	
24	HS52010024	GUIDE, BLADE GUARD	1	
26	HS52010062	KNOB, ADJUSTMENT GUIDE	1	
27	HS3906045	SCREW	2	
28	HS52010025	SUPPORT BLADE GUARD	1	
29	HS3801016	SCREW	2	
30	HS3914010	NUT	3	
32	HS018100180	V-BELT	1	
33	HS52010022A	COVER, V-BELT (PULLEY SIDE)	1	
34	HS3833073	WASHER	7	
35	HS3806037	SCREW	1	
37	HS52010046	BUSHING	1	
38	HS3806076	SCREW	1	
39	HS52010036	BELT ADJUSTER	1	
45	HS3026012	SNAP RING	1	
46	HS3833080	WASHER	1	
48	HS3918013	WASHER	3	
61	HS3906019	SCREW	3	
62	HS52010211	GUARD	1	



# HS81 CUT-OFF SAW — FUEL, LIFTING HANDLE, AND ROLLER ASSY.

FUEL, LIFTING HANDLE AND ROLLER ASSY.



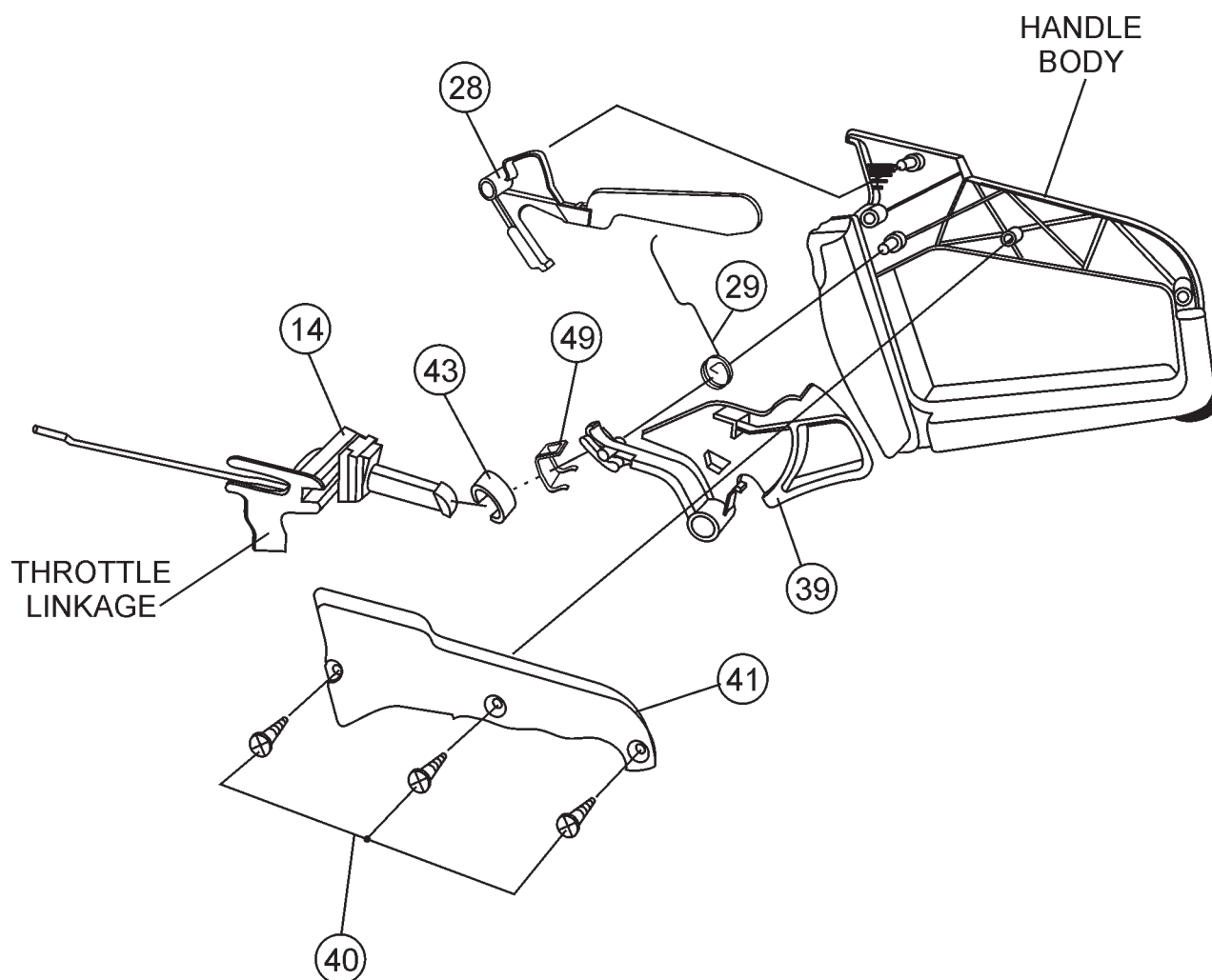
## HS81 CUT-OFF SAW — FUEL, LIFTING HANDLE, AND ROLLER ASSY.

### FUEL, LIFTING HANDLE AND ROLLER ASSY.

<u>NO.</u>	<u>PART NO.</u>	<u>PART NAME</u>	<u>QTY.</u>	<u>REMARKS</u>
3	HS52010047	HANDLE	1	
5	HS097000485	FUEL TANK ASSY.	1	
7	HS3072015	WASHER	2	
8	HS3801020	SCREW	2	
9	HS018500066	FITTING	1	
15	HS097000061A	SCREW	4	
19	HS005100913	SCREW	6	
24	HS3833073	WASHER	6	
26	HS018500096	BREATHER, VALVE BODY	1	
30	HS52010004	GUARD FUEL TANK	1	
31	HS3960087	SCREW	1	
32	HS018100317	SPACER, ROLLER SUPPORT LOWER	2	
33	HS3833076	WASHER	4	
34	HS3960045	SCREW	2	
35	HS3806035	SCREW	2	
36	HS018100171A	ROLLER	1	
37	HS52010098	SUPPORT, ROLLER LOWER	1	
38	HS52010215	MAIN ROLLER SUPPORT UPPER	1	
42	HS50010218	FILTER, FUEL	1	
44	HS52010066	SHOCK ABSORBER	6	

## HS81 CUT-OFF SAW — THROTTLE LINKAGE ASSY.

THROTTLE ASSY.



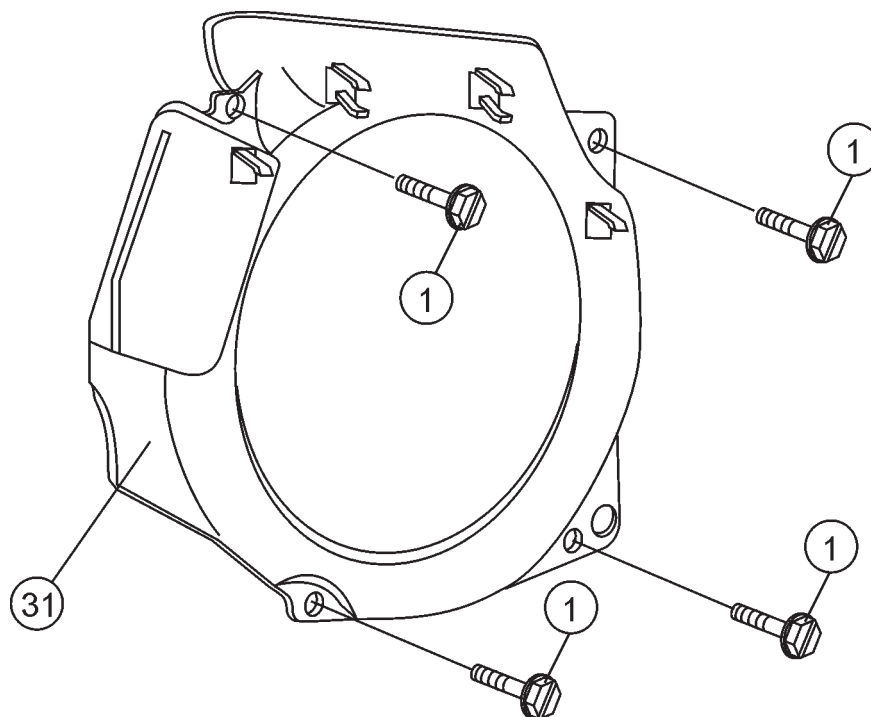
## HS81 CUT-OFF SAW — THROTTLE LINKAGE ASSY.

### THROTTLE ASSY

<u>NO.</u>	<u>PART NO.</u>	<u>PART NAME</u>	<u>QTY.</u>	<u>REMARKS</u>
14 .....	HS52012044 .....	THROTTLE LINKAGE .....	1 .....	INCLUDES ITEM W/ %
28	HS52010077	THROTTLE LOCK LEVER	1	
29	HS097000028	SPRING	1	
39 .....	HS52010092 .....	THROTTLE TRIGGER LEVER .....	1 .....	INCLUDES ITEM W/ #
40	HS3960040	SCREW	3	
41	HS097000024	COVER, HANDLE/TANK	1	
43% .....		CAP, THROTTLE LINKAGE .....	1 .....	NOT SOLD SEPARATELY
49# .....		PLATE .....	1 .....	NOT SOLD SEPARATELY

## HS81 CUT-OFF SAW — FLYWHEEL COVER ASSY.

FLYWHEEL COVER ASSY.



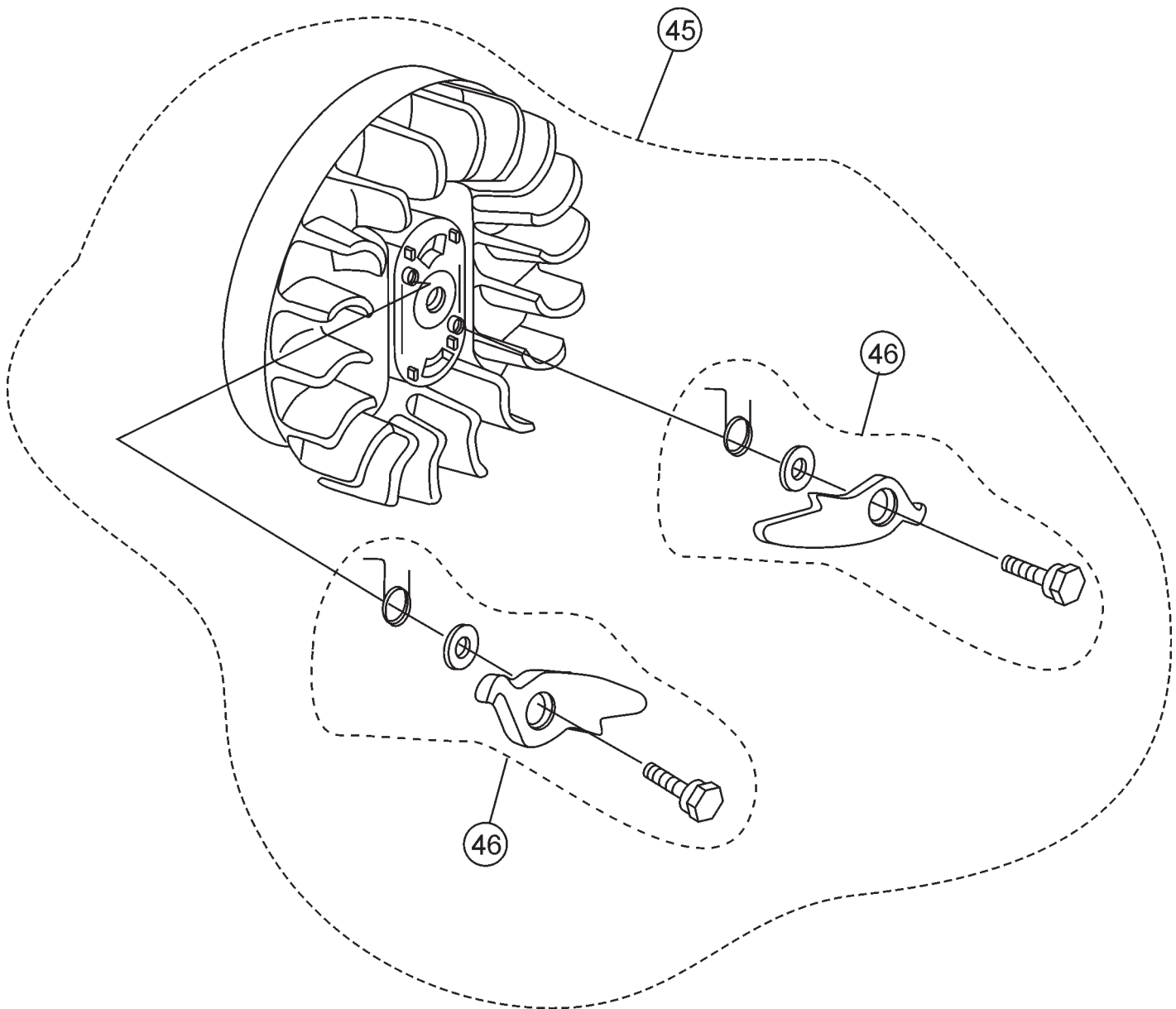
## HS81 CUT-OFF SAW — FLYWHEEL COVER ASSY.

FLYWHEEL COVER ASSY.

<u>NO.</u>	<u>PART NO.</u>	<u>PART NAME</u>	<u>QTY.</u>	<u>REMARKS</u>
1	HS097000092	SCREW	4	
31	HS097000019B	FLANGE, STARTER	1	

## HS81 CUT-OFF SAW — FLYWHEEL ASSY.

FLYWHEEL ASSY.



## HS81 CUT-OFF SAW — FLYWHEEL ASSY.

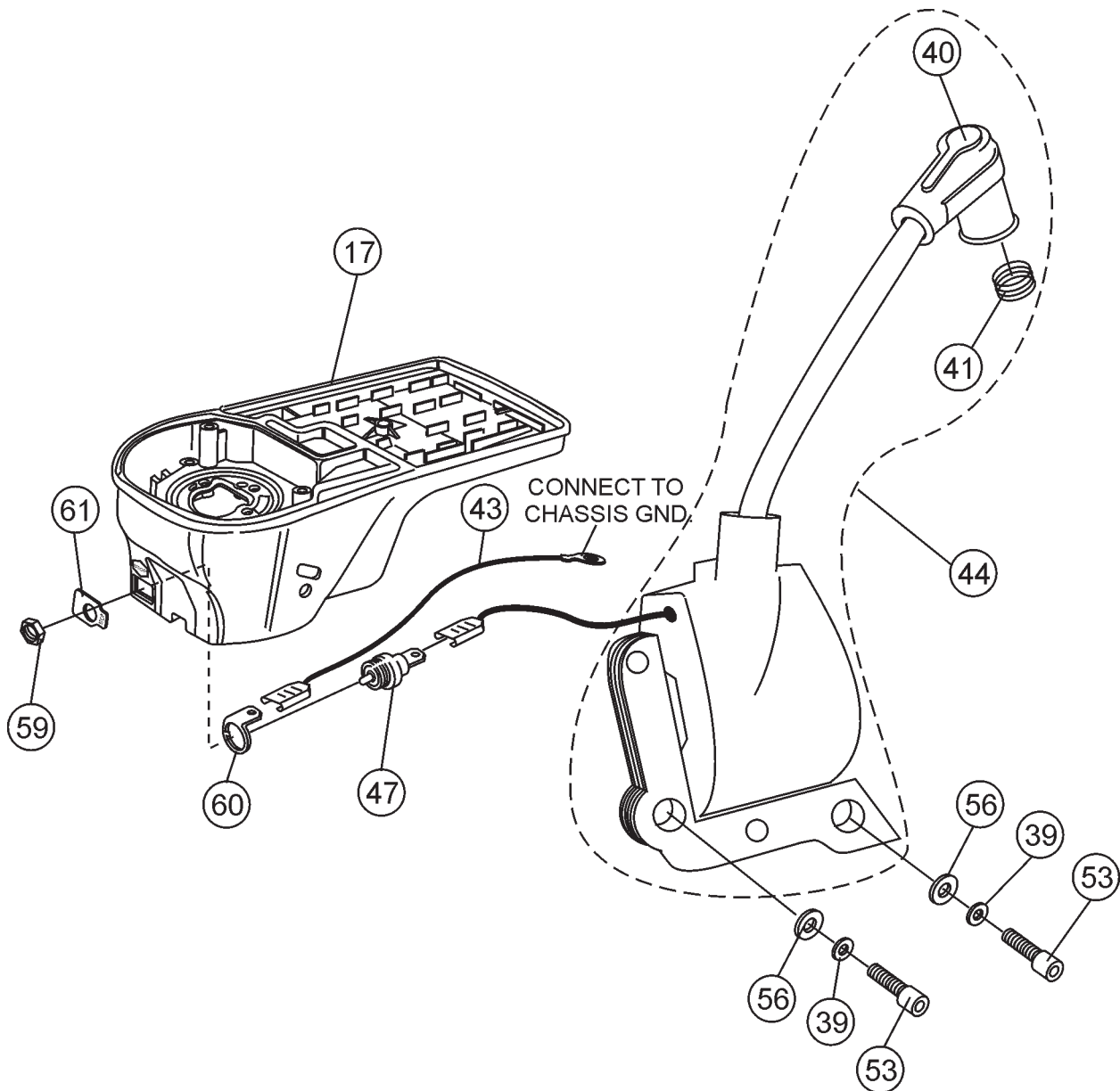
FLYWHEEL ASSY.

<u>NO.</u>	<u>PART NO.</u>	<u>PART NAME</u>	<u>QTY.</u>	<u>REMARKS</u>
45	HS52010136	FLYWHEEL .....	1 .....	INCLUDES ITEM W/*
46*	HS52012027	PAWL SET	1	



## HS81 CUT-OFF SAW — IGNITION COIL ASSY.

### IGNITION COIL ASSY.



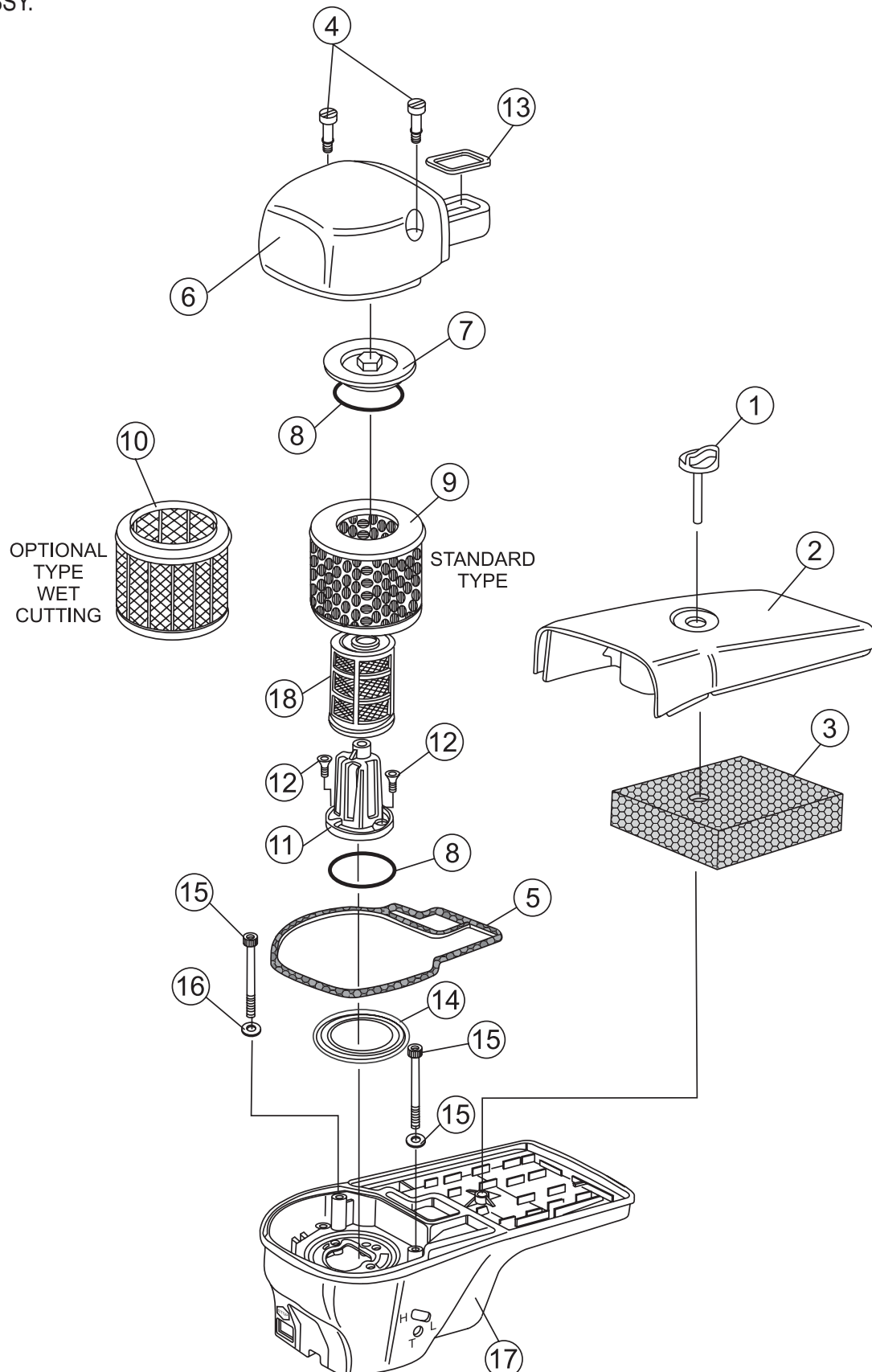
## HS81 CUT-OFF SAW — IGNITION COIL ASSY.

### IGNITION COIL ASSY.

<u>NO.</u>	<u>PART NO.</u>	<u>PART NAME</u>	<u>QTY.</u>	<u>REMARKS</u>
17	HS52010016	COVER, AIR FILTER LOWER	1	
39	HS006000315	WASHER	2	
40*	HS094600097A	CAP, SPARK PLUG	1	
41*	HS094600169	SPRING SPARK PLUG	1	
43	HS097000121A	CABLE WIRE, ON-OFF SWITCH	1	
44	HS52010001	COIL, IGNITION ASSY. ....	1	INCLUDES ITEM W/*
47	HS094500497	SWITCH, ON-OFF	1	
53	HS094000227	SCREW	2	
56	HS006000152	WASHER	2	
59	HS099900397	NUT	1	
60	HS52010132	CONNECTING LINK	1	
61	HS004000438	PLATE, ON-OFF SWITCH	1	

# HS81 CUT-OFF SAW — AIR FILTER ASSY.

## AIR FILTER ASSY.



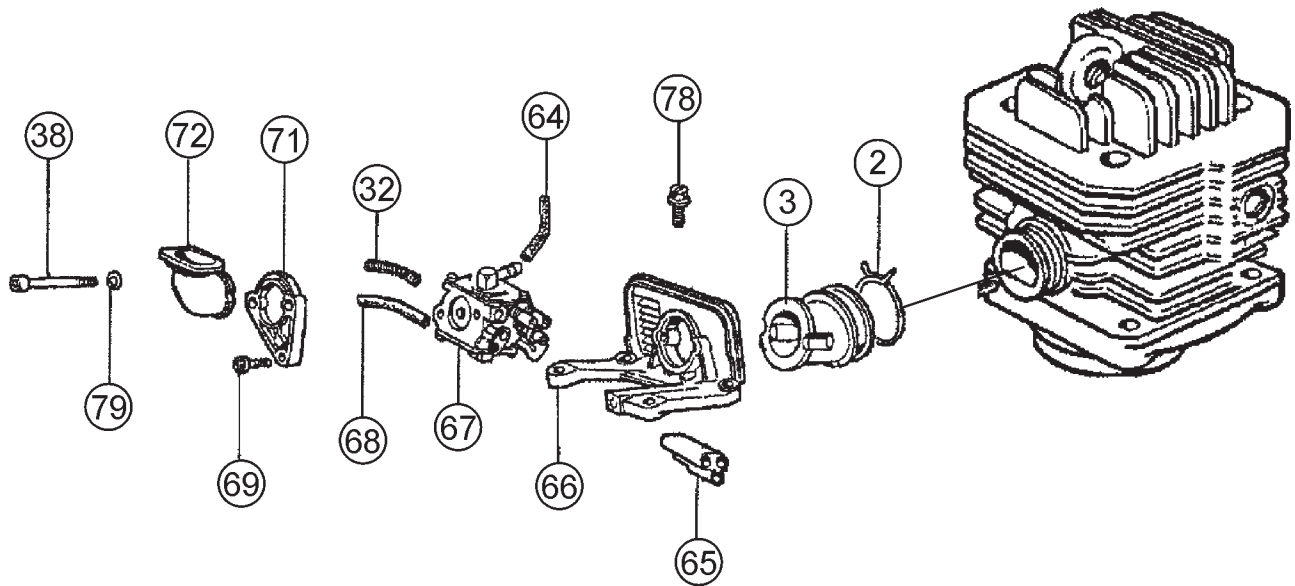
## HS81 CUT-OFF SAW — AIR FILTER ASSY.

### AIR FILTER ASSY.

<u>NO.</u>	<u>PART NO.</u>	<u>PART NAME</u>	<u>QTY.</u>	<u>REMARKS</u>
1	HS52010041	KNOB, AIR FILTER COVER	1	
2	HS52010018	COVER, AIR FILTER, LONG	1	
3	HS52010141	PRE- FILTER, FOAM	1	
4	HS093000468A	SCREW, AIR FILTER COVER	2	
5	HS52010059	GASKET, AIR FILTER BASE	1	
6	HS52012004	COVER, AIR FILTER, UPPER	1	
7	HS018600273A	FLANGE, PRE- FILTER, CAP	1	
8	HS330000010	O- RING, FLANGE PRE- FILTER	2	
9	HS018600125	FILTER, AIR	1	
10	HS099900778A	FILTER, AIR (WET CUTTING)	1	
11	HS52010014B	SUPPORT, FILTER	1	
12	HS3802002	SCREW, FILTER SUPPORT	2	
13	HS52010060	GASKET, AIR FILTER COVER	1	
14	HS018600090A	GASKET, AIR FILTER LOWER	1	
15	HS072700182	SCREW, AIR CLEANER MTG.	3	
16	HS3833073	WASHER, AIR CLEANER MTG.	3	
17	HS52010016	COVER, AIR FILTER LOWER	1	
18	HS018600056A	FILTER, AIR INNER	1	

## HS81 CUT-OFF SAW — CARBURETOR MOUNTING ASSY.

CARBURETOR MOUNTING ASSY.



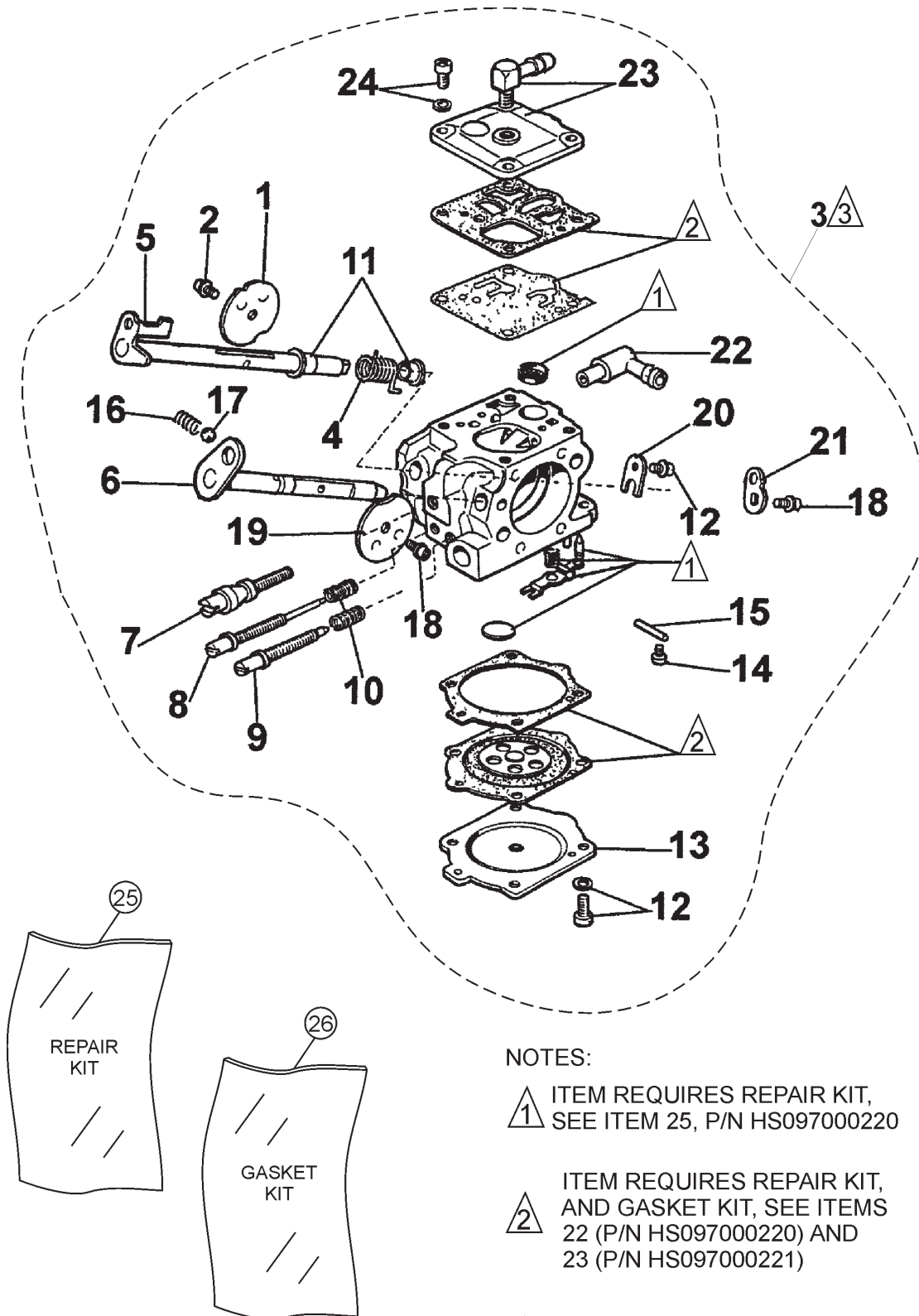
## HS81 CUT-OFF SAW — CARBURETOR MOUNTING ASSY.

### CARBURETOR MOUNTING ASSY.

<u>NO.</u>	<u>PART NO.</u>	<u>PART NAME</u>	<u>QTY.</u>	<u>REMARKS</u>
2	HS097000059	SPRING, MANIFOLD	1	
3	HS098000010	MANIFOLD, INNER	1	
32	HS52020060	SPRING	1	
38	HS61052009	SCREEN	2	
64	HS015000100	FUEL LINE, CARBURETOR	1	
65	HS552010189	FLANGE, CARBURETOR SUPPORT	1	
66	HS098000057	SUPPORT, CARBURETOR	1	
67	HS2318920A	CARBURETOR ASSEMBLY	1	
68	HS094000215 A	FUEL LINE, CARBURETOR	1	
69	HS3960057	SCREW	1	
71	HS097000333	SPACER, FLANGE	1	
72	HS52010008	MANIFOLD, OUTER	1	
78	HS097000092	SCREW	4	
79	HS3833073	WASHER	2	

# HS81 CUT-OFF SAW — CARBURETOR ASSY.

## CARBURETOR ASSY.



### NOTES:

△ ITEM 1 REQUIRES REPAIR KIT, SEE ITEM 25, P/N HS097000220

△ ITEM 2 REQUIRES REPAIR KIT, AND GASKET KIT, SEE ITEMS 22 (P/N HS097000220) AND 23 (P/N HS097000221)

△ ITEM 3 COMPLETE CARBURETOR ASSY. ITEM 3, INCLUDES ITEMS WITHIN DASHED LINES.

## HS81 CUT-OFF SAW — CARBURETOR ASSY.

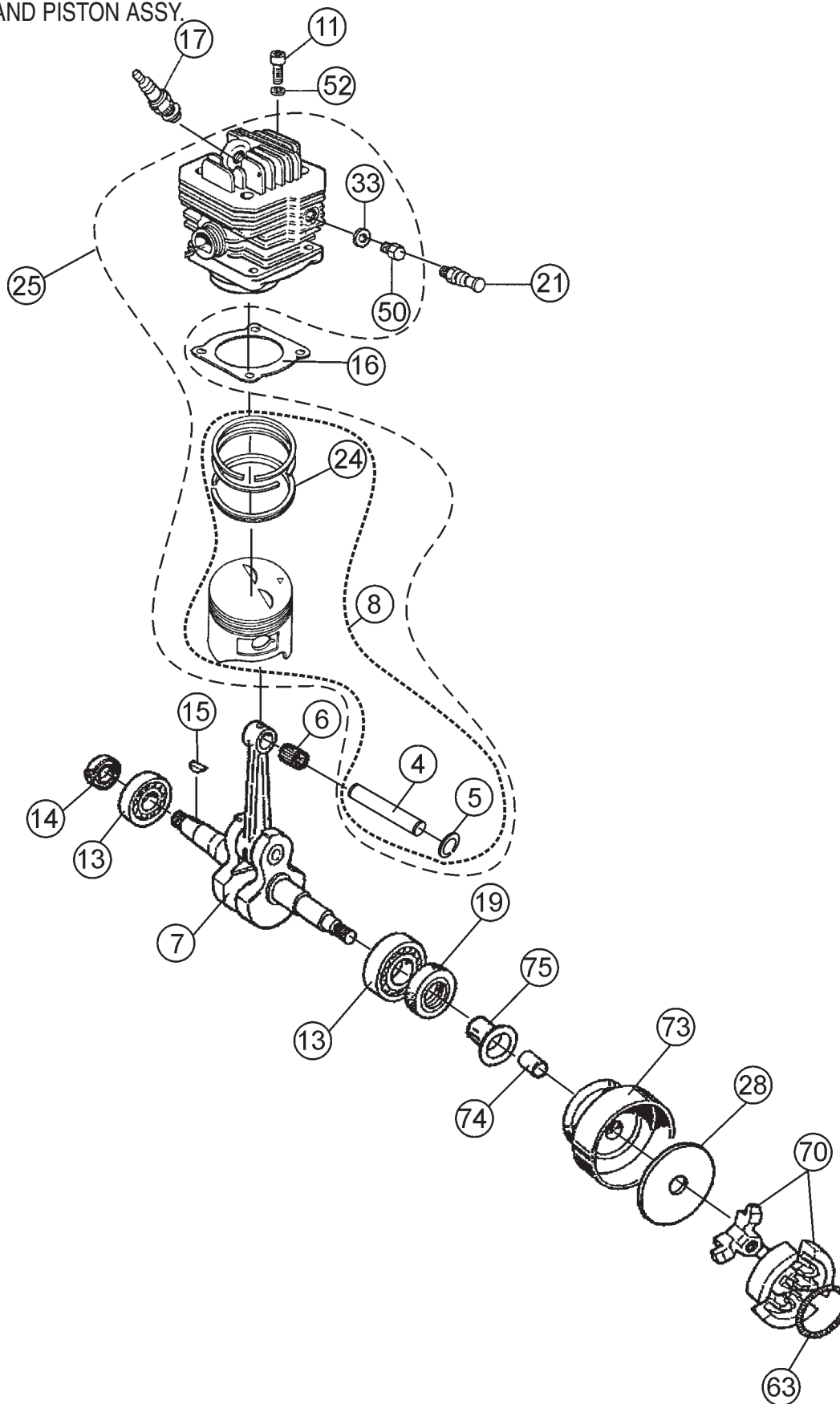
### CARBURETOR ASSY.

<u>NO.</u>	<u>PART NO.</u>	<u>PART NAME</u>	<u>QTY.</u>	<u>REMARKS</u>
1*	HS52010019	THROTTLE VALVE	1	
2*	HS035000160	SCREW	1	
3	HS2318920A	CARBURETOR ASSY. ....	1	INCLUDES ITEMS W/*
4*	HS097000161	SPRING	1	
5*	HS097000154	THROTTLE SHAFT	1	
6*	HS097000155	STARTER SHAFT	1	
7*	HS097000162	SCREW, ADJUST	1	
8*	HS2318762	SCREW "L" CARBURETOR	1	
9*	HS2318761	SCREW "L" CARBURETOR	1	
10*	HS097000223	SPRING	2	
11*	HS097000224	BUSHING	2	
12*	HS035000162	SCREW	5	
13*	HS52010007	COVER	1	
14*	HS003300202	SCREW	1	
15*	HS035000169	PIN	1	
16*	HS035000164	SPRING	1	
17*	HS006000325	BALL, CARBURETOR	1	
18*	HS003300209	SCREW	1	
19*	HS035000151	STARTER VALVE	1	
20*	HS035000149	PLATE	1	
21*	HS097000160	LEVER	1	
22*	HS003300036	ELBOW CONNECT	1	
23*	HS097000157	COVER	1	
24*	HS035000161	SCREW	1	
25*	HS097000220	KIT, REPAIR CARBURETOR	1	
26*	HS097000221	KIT, GASKET CARBURETOR	1	



## HS81 CUT-OFF SAW — CRANKSHAFT / PISTON ASSY.

CRANKSHAFT AND PISTON ASSY.



# HS81 CUT-OFF SAW — CRANKSHAFT AND PISTON ASSY.

## CRANKSHAFT AND PISTON ASSY.

<u>NO.</u>	<u>PART NO.</u>	<u>PART NAME</u>	<u>QTY.</u>	<u>REMARKS</u>
4*#	HS094500007	PISTON PIN	1	
5*#	HS007201198	RING, PISTON PIN	2	
6	HS006000010	BEARING, UPPER CRANKSHAFT	1	
7	HS098000001	CRANKSHAFT	1	
8*	HS098000033A	PISTON ASSEMBLY W /RINGS .....	1	INCLUDES ITEMS W /#
11	HS005100906A	SCREW	4	
13	HS099900006	BEARING, CRANKSHAFT	2	
14	HS094500004	SEAL RING	1	
15	HS094500028	KEY, CRANKSHAFT	1	
16	HS097000010A	GASKET, CYLINDER	1	
17	HS3055101	SPARK PLUG	1	
19	HS099900014	SEAL RING, CRANKSHAFT	1	
21	HS52010067	DECOMPRESSOR	1	
24*#	HS098000004	PISTON RINGS	1	
25	HS098000073A	CYLINDER ASSEMBLY W /PISTON .....	1	INCLUDES ITEMS W /*
28	HS097000097	WASHER	1	
33*	HS3078012	WASHER	1	
50*	HS52010093	SCREW .....	1	REMOVE WHEN INSTALLING ITEM 21
52	HS3833076	WASHER	4	
63+	HS004900137B	SPRING, CLUTCH	1	
70	HS097000132	CLUTCH ASSEMBLY .....	1	INCLUDES ITEMS W /+
73	HS52010029	CLUTCH DRUM .....	1	INCLUDES ITEMS W /\$
74\$	HS52010034	BUSHING, CLUTCH DRUM	1	
75	HS52010035	SPACER, CLUTCH DRUM	1	

WATER KIT ASSY.

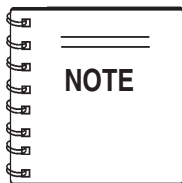


- PAGE 62 — HS81 CUT-OFF SAW — OPERATION & PARTS MANUAL — REV. #4 (09/12/05)**

## HS81 CUT-OFF SAW — WATER KIT ASSY.

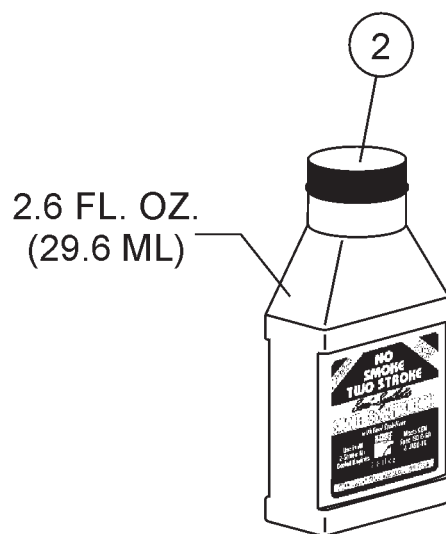
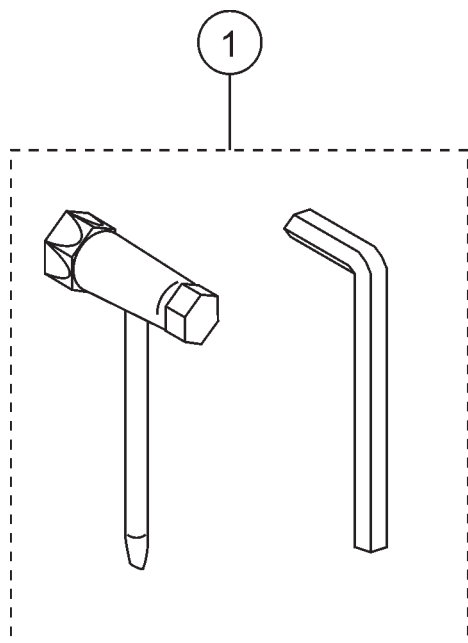
### WATER KIT ASSY.

<u>NO.</u>	<u>PART NO.</u>	<u>PART NAME</u>	<u>QTY.</u>	<u>REMARKS</u>
1	HS52012062	WATER KIT ASSY. ....	1	INCLUDES ITEMS W/*
2*	HS52010121	FITTING, QUICK DISCONNECT	1	
3*		PLASTIC TIE WRAPS	8	
4*		HOSE CLAMP	1	
5*		SCREW, SOCKET HEAD CAP W/WASHER	1	
6*		HOSE, WATER	1	
7*	HS52010207	VALVE, SHUT-OFF	1	



Items 3-6 are included with the Water Kit Assembly and cannot be purchased separately.

## TOOLS



CANNOT BE PURCHASED  
SEPARATELY, MUST ORDER  
A CASE OF 36.

## HS81 CUT-OFF SAW — TOOLS

### TOOLS

<u>NO.</u>	<u>PART NO.</u>	<u>PART NAME</u>	<u>QTY.</u>	<u>REMARKS</u>
1	HS4191240	TOOL KIT	1	
2	00325	SMOKELESS 2-STROKE OIL.....	1 .....	CAN ONLY BE PURCHASED AS A CASE (QTY 36)

## HS81 CUT-OFF SAW — RECOMMENDED DIAMOND BLADES

### Recommended Diamond Blades For your *Side Winder* Saw



#### 12" x .125" x 1" - 20mm Arbor

Material to Cut	Economy	Standard	Premium	Supreme
Cured Concrete	12GPS	12SBL	12PDHS1	12PDHS2
Asphalt Green Concrete	12GPS	12SBLA	12PDHS1A	12PDHS2A
Hard Brick & Masonry	12GPS	12SBL	12PDHS1H	12PDHS2H
Brick and Block	12GPS	12SBL	12PDHS1	12PDHS2
Abrasive Block	12GPS	12SBLA	12PDHS1A	12PDHS2A

#### 14" x .125" x 1" - 20mm Arbor

Material to Cut	Economy	Standard	Premium	Supreme
Cured Concrete	14GPS	14SBL	14PDHS1	14PDHS2
Asphalt Green Concrete	14GPS	14SBLA	14PDHS1A	14PDHS2A
Hard Brick & Masonry	14GPS	14SBL	14PDHS1H	14PDHS2H
Brick and Block	14GPS	14SBL	14PDHS1	14PDHS2
Abrasive Block	14GPS	14SBLA	14PDHS1A	14PDHS2A