

# **OPERATION AND PARTS MANUAL**



## **MODEL GA-9.7HE PORTABLE GENERATOR (HONDA GX610 Series GASOLINE ENGINES)**

Revision #2 (03/19/18)

**THIS MANUAL MUST ACCOMPANY THE EQUIPMENT AT ALL TIMES.**

# TABLE OF CONTENTS

## GA9.7HE Portable 60 Hz Generator

Proposition 65 Warning .....	2
Table Of Contents .....	3
Parts Ordering Procedures.....	4
Safety Information .....	5-9
Specifications (Generator).....	10
Specifications (Engine).....	11
Dimensions.....	12
Installation .....	14-15
General Information.....	16
Components (Generator).....	17-18
Inspection/Setup.....	19-22
Operation.....	23-25
Shutdown/Preparation For Long Term Storage .....	26
Maintenance .....	27-31
Genset Wiring Digram (S/N 5646715 and Below) .	32
Genset Wiring Digram (S/N 5646716 and Above) .	33
Troubleshooting (Engine).....	34-35
Troubleshooting (Generator).....	36
Explanation Of Code In Remarks Column.....	38
Suggested Spare Parts .....	39

## Component Drawings

Nameplate And Decals Assembly.....	40-41
Generator Assembly .....	42-43
Control Box Assembly .....	44-45
GFCI Sensing Module Assy. (S/N 5646716~) ..	46-47
Pipe Frame Assembly.....	48-49
Pipe Frame Assy. (W/Charcoal Canister) .....	50-51
Battery Assy.....	52-53

## Honda GX610K1VD/GX610U1VD Engine Drawings

Air Cleaner Assembly.....	54-55
Camshaft Assembly.....	56-57
Carburetor Assembly.....	58-59
Control Assembly.....	60-61
Crankcase Cover Assembly .....	62-63
Crankshaft Assembly.....	64-65
Cylinder Barrel Assembly.....	66-67
Cylinder Head Assembly.....	68-69
Fan Cover Assembly.....	70-71
Flywheel Assembly.....	72-73
Ignition Coil Assembly.....	74-75
Piston Assembly.....	76-77
Recoil Starter Assembly.....	78-79
Muffler Assembly.....	80-81
Auto Throttle Assembly.....	82-83
Starter Motor Assembly .....	84-85
Fuel Pump Assembly.....	86-87
Rectifier Assembly.....	88-89
Engine Decals Assembly .....	90-91
Engine — Tool Kit.....	92-93

Terms And Conditions Of Sale — Parts .....	94
--	----

## SUGGESTED SPARE PARTS

### GA9.7HE PORTABLE 60 HZ GENERATOR WITH HONDA GX610K1VD/GX610U1VD GASOLINE ENGINES

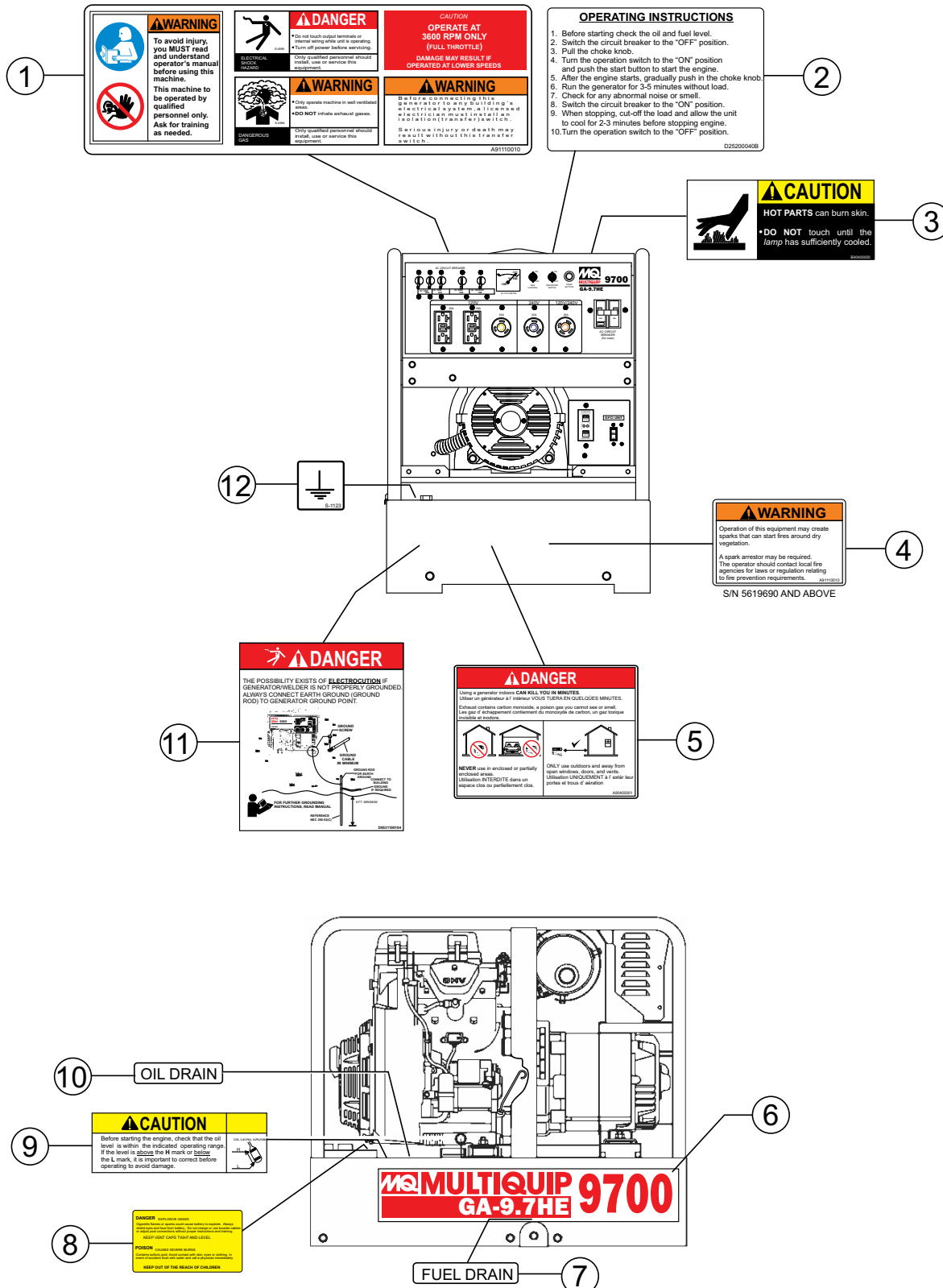
1 to 3 units

Qty.	P/N	Description
4	.....0602201356	.....REGULATOR
4	.....0601823754	.....RELAY
2	.....0601812529	.....RECEPTABLE L14-30R
1	.....0601811032	.....RECEPTACLE, L6-20R
2	.....0601811035	.....RECEPTACLE, L5-30R
1	.....0601812598	.....RECEPTACLE, 5-20R S/N 5609992 AND BELOW
1	.....0601814013	.....RECEPTACLE, 5-20R S/N 5609993 AND ABOVE
1	.....0601807459	.....CIRCUIT BREAKER, 2P, 35A
1	.....0601806425	.....CIRCUIT BREAKER, 2P, 30A
1	.....0601806036	.....CIRCUIT BREAKER, 2P, 20A
4	.....0601806424	.....CIRCUIT BREAKER, 1P, 30A
1	.....0601806423	.....CIRCUIT BREAKER, 1P, 20A
1	.....0601830771	.....IDLE CONTROL SWITCH
1	.....0601830799	.....OPERATION SWITCH
1	.....0602100102	.....START SWITCH
2	.....0601802137	.....FUSE
2	.....A9924800104	.....CAP FUEL STRAINER, (FUEL TANK)
2	.....16910ZE8015	.....FILTER COMP FUEL, (FUEL PUMP)
1	.....0602125032	.....GAUGE FUEL
2	.....0805083204	.....SUSPENSION RUBBER
2	.....7605419004A	.....SUSPENSION RUBBER
3	.....9807952876	.....SPARK PLUG, (BPR5ES-NKG)
3	.....154000ZJ100	.....CARTRIDGE FILTER, OIL
1	◆.....35480ZJ1841	.....SWITCH ASSY., OIL LEVEL
1	◇.....35480ZJ1841	.....SWITCH ASSY., OIL LEVEL, USE UP TO S.N 1068428
1	◇.....35480ZJ1842	.....SWITCH ASSY., OIL LEVEL, USE FROM S/N 1068429
1	◆.....16100ZJ0881	.....CARBURETOR ASSY. (BG21N A), USE UP TO S/N 2014887
1	◆.....16100ZJ0911	.....CARBURETOR ASSY. (BG21Q A), USE FROM S/N 2014888
1	◇.....16100ZJ0911	.....CARBURETOR ASSY. (BG21Q A), USE UP TO S/N 1006893
1	◇.....16100ZJ0912	.....CARBURETOR ASSY. (BG21Q B), USE FROM S/N 1006894
1	◆.....17210ZJ1841	.....ELEMENT COMP., AIR CLEANER, USE UP TO S/N 2017952
1	◆.....17210ZJ1842	.....ELEMENT COMP., AIR CLEANER, USE FROM S/N 2017953
1	◇.....17210ZJ1842	.....ELEMENT COMP., AIR CLEANER
2	.....28462ZE3W01	.....ROPE, RECOIL

#### NOTICE

- ◆ GX610K1VD: Model GA9.7HE DEC. 2003 AND BELOW
- ◇ GX610U1VD: Model GA9.7HE APRIL. 2008 AND ABOVE

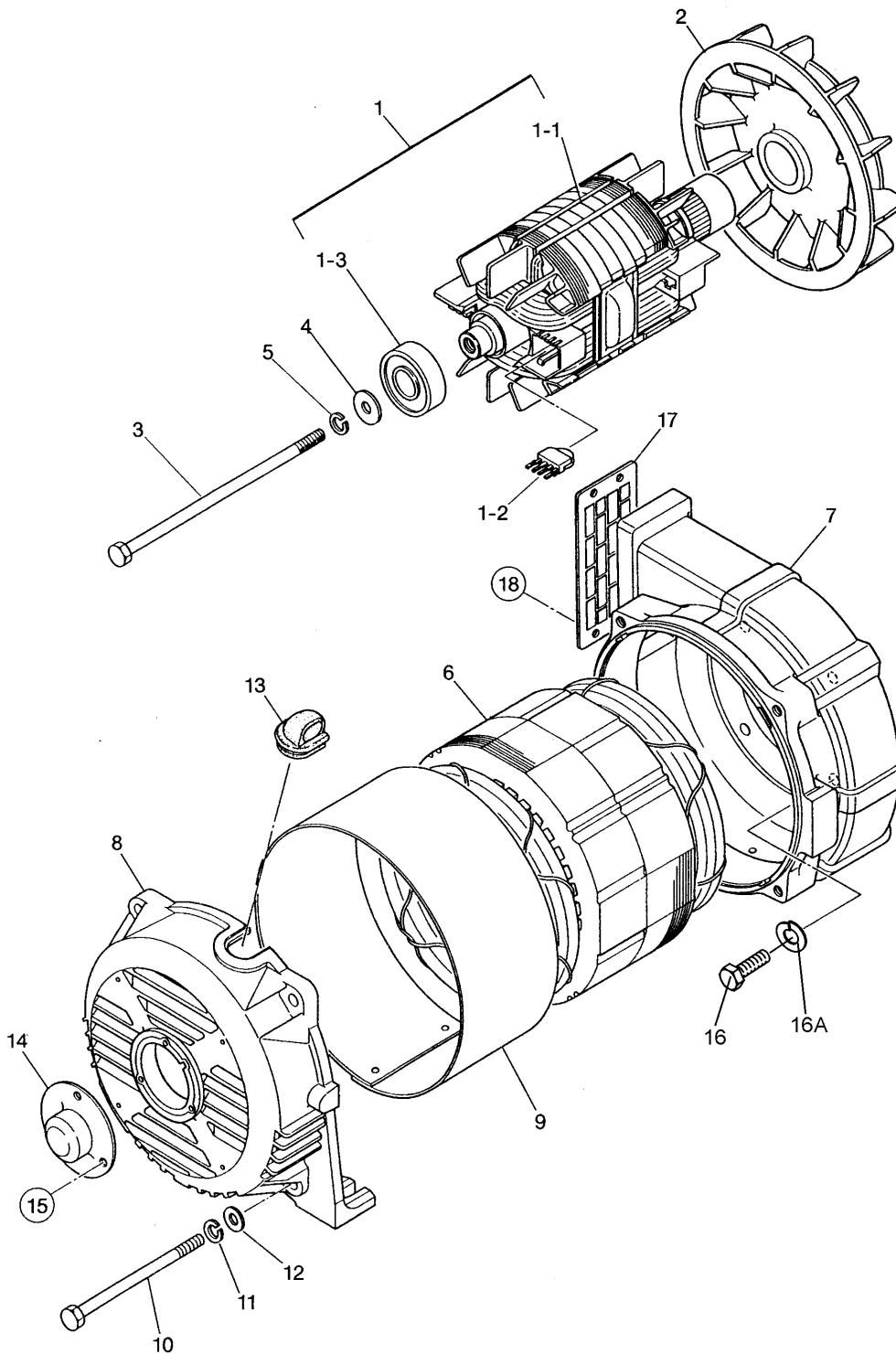
# GA9.7HE— NAMEPLATE AND DECALS ASSY.



## GA9.7HE— NAMEPLATE AND DECALS ASSY.

<u>NO.</u>	<u>PART NO.</u>	<u>PART NAME</u>	<u>QTY.</u>	<u>REMARKS</u>
1	A9511100103	DECAL; WARNING/DANGER.....	1.....	A91110010
2	D2552000404	DECAL; OPERATING INSTRUCTIONS.....	1.....	D25200040B
3	B9504000304	DECAL; CAUTION HOT PARTS .....	1.....	B90400030
4	M9504200004	DECAL; WARNING START FIRES .....	1.....	S/N 5619690 AND ABOVE M90420000
5	A9504000014	DECAL; DANGER, EXHAUST GASES.....	1.....	A90400001
6	A6561000003	DECAL; MQ LOGO 9700 STRIPE.....	2.....	A66100000
7	7810680104	DECAL; FUEL DRAIN.....	1.....	S-3060
8	0820650604	DECAL; DANGER, EXPLOSIVE GASES	1	
9	8700611524	DECAL; CAUTION OIL LEVEL GAUGE	1	S-4926B
10	1630645004	DECAL; OIL DRAIN .....	1.....	S-1403
11	D9531100104	DECAL; DANGER, ELECTROCUTION .....	1.....	D93110010
12	0800628504	DECAL; GROUND .....	1.....	S-1123

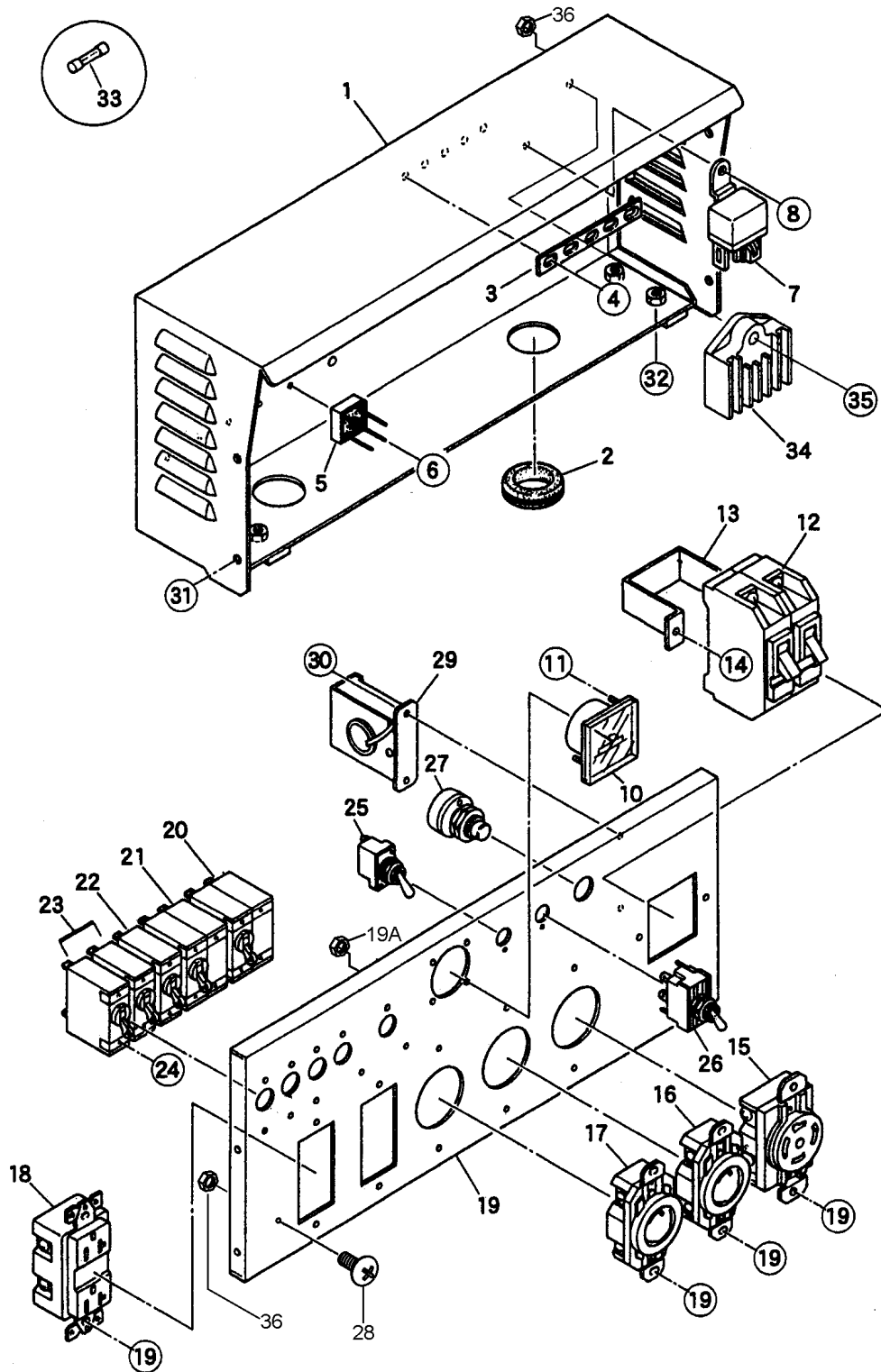
# GA9.7HE — GENERATOR ASSY.



## GA9.7HE — GENERATOR ASSY.

<u>NO.</u>	<u>PART NO.</u>	<u>PART NAME</u>	<u>QTY.</u>	<u>REMARKS</u>
1	A6110200103	ROTOR ASSY.....	1.....	INCLUDES ITEMS W/#
1-1#		FIELD ASSY.....	1.....	NOT SOLD SEPERATELY
1-2#	7871025004	RECTIFIER	2	
1-3#	0071206304	BEARING	1	
2	A6113100004	FAN	1	
3	A6113400004	SET BOLT, ROTOR	1	
4	0801086104	SET WASHER BEARING	1	
5	0040010000	WASHER, LOCK	1	
6	A6136000103	ARMATURE ASSY.	1	
7	A6155100102	END BRACKET	1	
8	A6155000002	END BRACKET	1	
9	A6133300003	COVER, STATOR	1	
10	A6133500004	SET BOLT, STATOR	4	
11	0040008000	WASHER, LOCK	4	
12	0401450080	WASHER, FLAT .....	4.....	REPLACES P/N 0041208000
13	7871329514	GROMMET	1	
14	A6155400104	COVER, BEARING	1	
15	0027105012	MACHINE SCREW	3	
16	011008020	HEX, HEAD BOLT.....	4.....	REPLACES P/N 0010108020
16A	0040008000	WASHER, LOCK	4	
17	A6155400204	COVER	1	
18	0052205008	RIVET	4	

# GA9.7HE — CONTROL BOX ASSY.

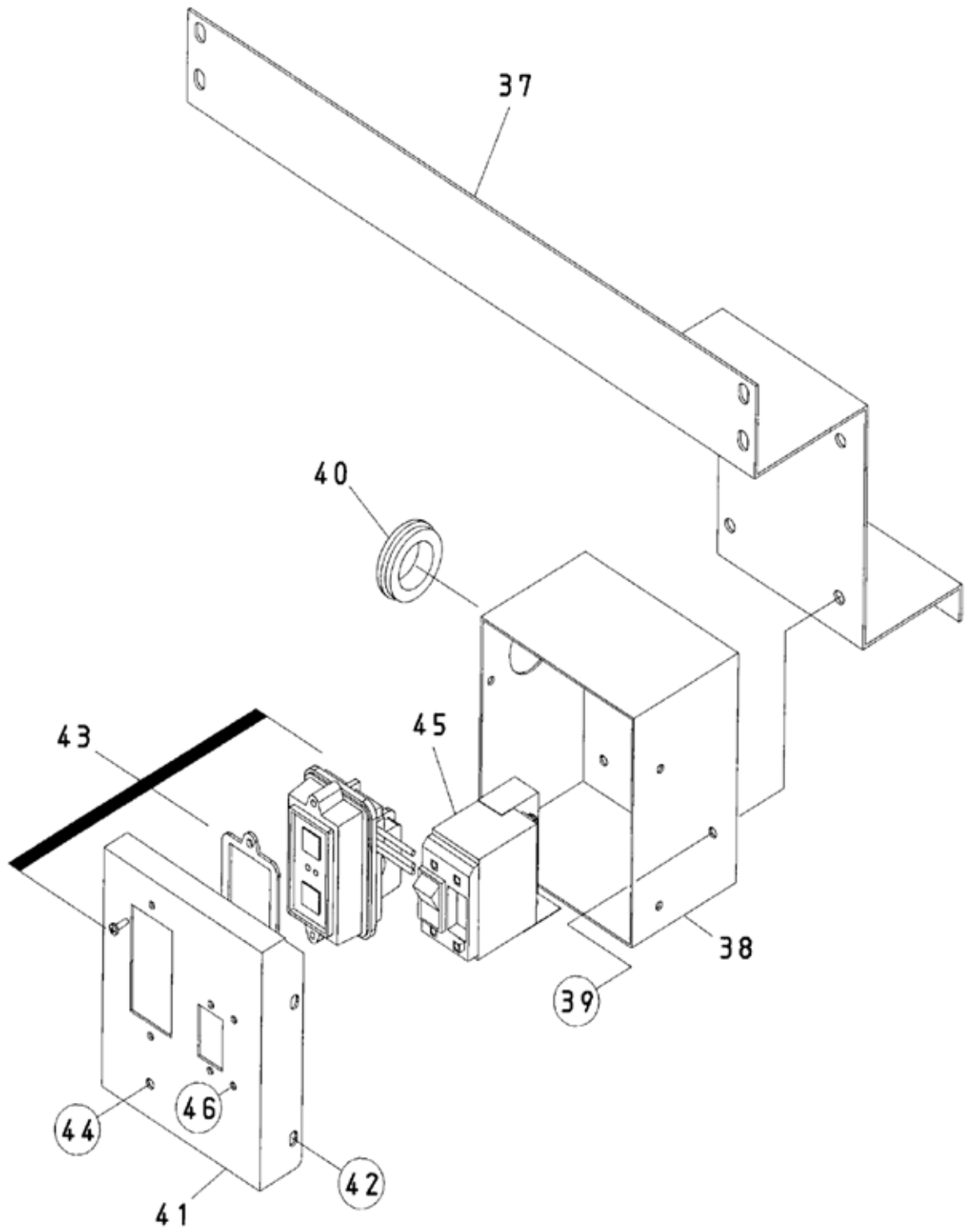




## GA9.7HE — CONTROL BOX ASSY.

<u>NO.</u>	<u>PART NO.</u>	<u>PART NAME</u>	<u>QTY.</u>	<u>REMARKS</u>
1	A6215000113	CONTROL BOX	1	
2	0601850102	GROMMET	2	
3	W8511864604	TERMINAL PLATE	1	
4	0016906020	HEX, HEAD BOLT	5	
5	0601823204	RECTIFIER	5	
6	0027103020	MACHINE SCREW	5	
7	0601823754	RELAY, DC12V	1	
8	0027105016	MACHINE SCREW	1	
9	A6225000103	CONTROL PANEL	1	
10	0601606819	AC VOLTMETER, 120/240V .....	1	REPLACES P/N 0601800258
11	0207003000	HEX. NUT	2	
12	0601807459	CIRCUIT BREAKER 2P, 265V @ 35A	1	
13	W4341817004	BRACKET, CIRCUIT BREAKER	1	
14	0027404010	MACHINE SCREW	2	
15	0601812529	RECEPTACLE, L14-30R 125/250V, 30A	1	
16	0601811032	RECEPTACLE, L6-20R 250V, 20A	1	
17	0601811035	RECEPTACLE, L5-30R125V, 30A	1	
18	0601812598	RECEPTACLE, 5-20R GF53OEM 120V, 20A .....	2	S/N 5609992 AND BELOW
18	0601814013	RECEPTACLE, 5-20R GF20LA 120V, 20A .....	2	S/N 5609993 AND ABOVE
19	0021004010	MACHINE SCREW	10	
19A	OEMAA8	HEX. NUT .....	1	REPLACES P/N 0207004000
20	0601806425	CIRCUIT BREAKER 2P, 250V @ 30A	1	
21	0601806036	CIRCUIT BREAKER 2P, 250V @ 20A	1	
22	0601806424	CIRCUIT BREAKER 1P, 250V @ 30A	1	
23	0601806423	CIRCUIT BREAKER 1P, 250V @ 20A	2	
24	0027103005	MACHINE SCREW	10	
25	0601830727	IDLE CONTROL SWITCH	1	
26	0601830799	OPERATION SWITCH	1	
27	0601830771	START SWITCH	1	
28	0021004015	MACHINE SCREW	2	
29	0601823853	IDLE CONTROL DEVICE	1	
30	0021004015	MACHINE SCREW	2	
31	0017105012	HEX. HEAD BOLT	4	
32	0016906020	HEX. HEAD BOLT	4	
33	0601802137	FUSE, 10A @ 250V	2	
34	0602201356	REGULATOR, 14.5V	1	
35	0027106020	MACHINE SCREW	1	
36	OEMAA8	HEX. NUT .....	1	REPLACES P/N 0207004000

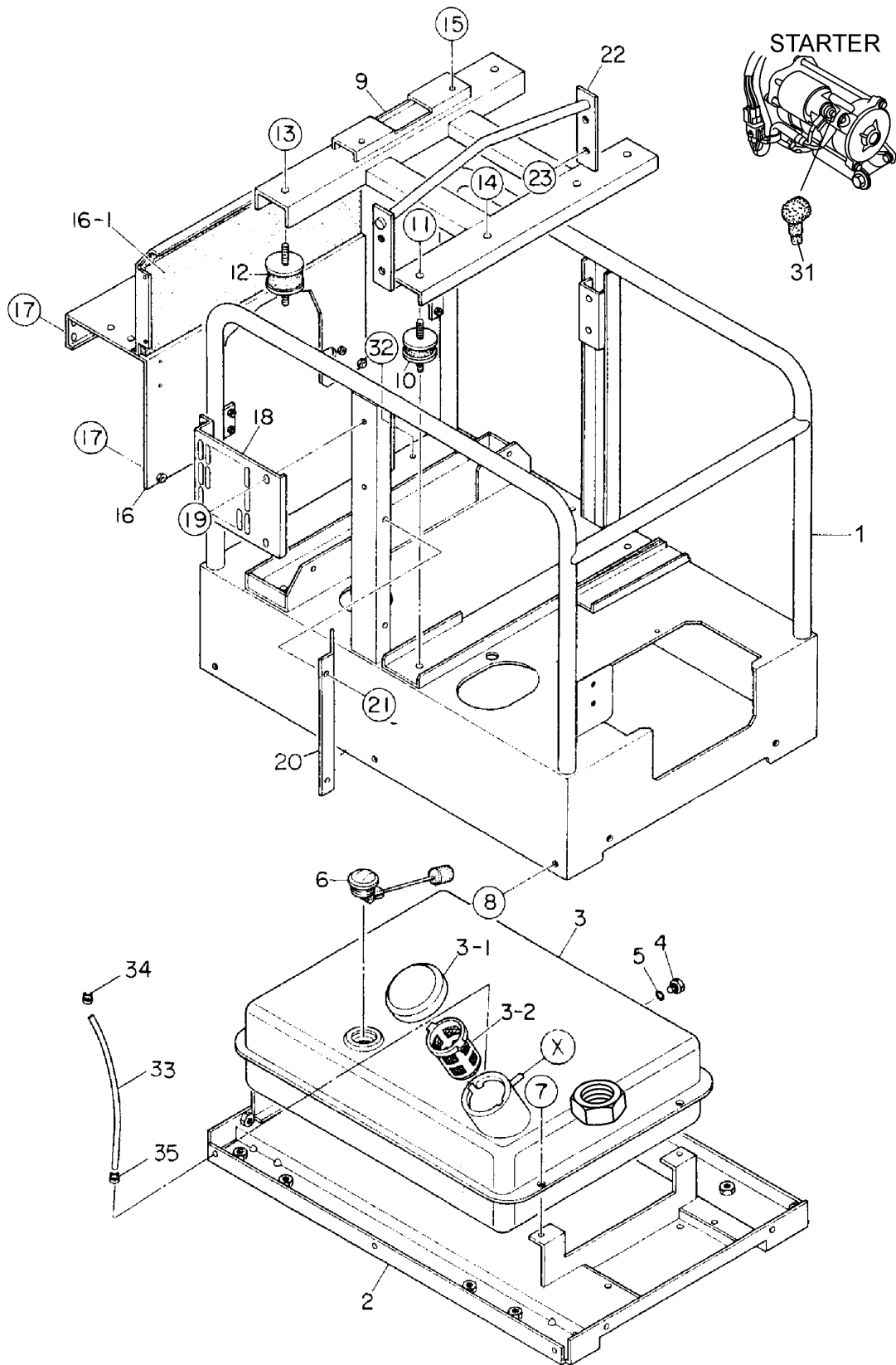
# GA9.7HE — GFCI SENSING MODULE ASSY.(S/N 5646716~)



## GA9.7HE — GFCI SENSING MODULE ASSY.(S/N 5646716~)

<u>NO.</u>	<u>PART NO.</u>	<u>PART NAME</u>	<u>QTY.</u>	<u>REMARKS</u>
37	A6261600403	BRACKET	1	
38	A6261500403	BOX, ELECTRIC PARTS	1	
39	0016906015	HEX. HEAD BOLT	4	
40	Y0601850270	GROMMET	1	
41	A6261700403	COVER	1	
42	0011305100	HEX. HEAD BOLT.....	4.....	REPLACES P/N 0017105012
43	0601829301	GFCI SENSING MODULE	1	
44	0021005015	MACHINE SCREW	1	
44A	0030005000	HEX. NUT .....	2.....	REPLACES P/N 0207005000
45	0601872302	CIRCUIT BREAKER 2P 35A	1	
46	0021003005	MACHINE SCREW	4	

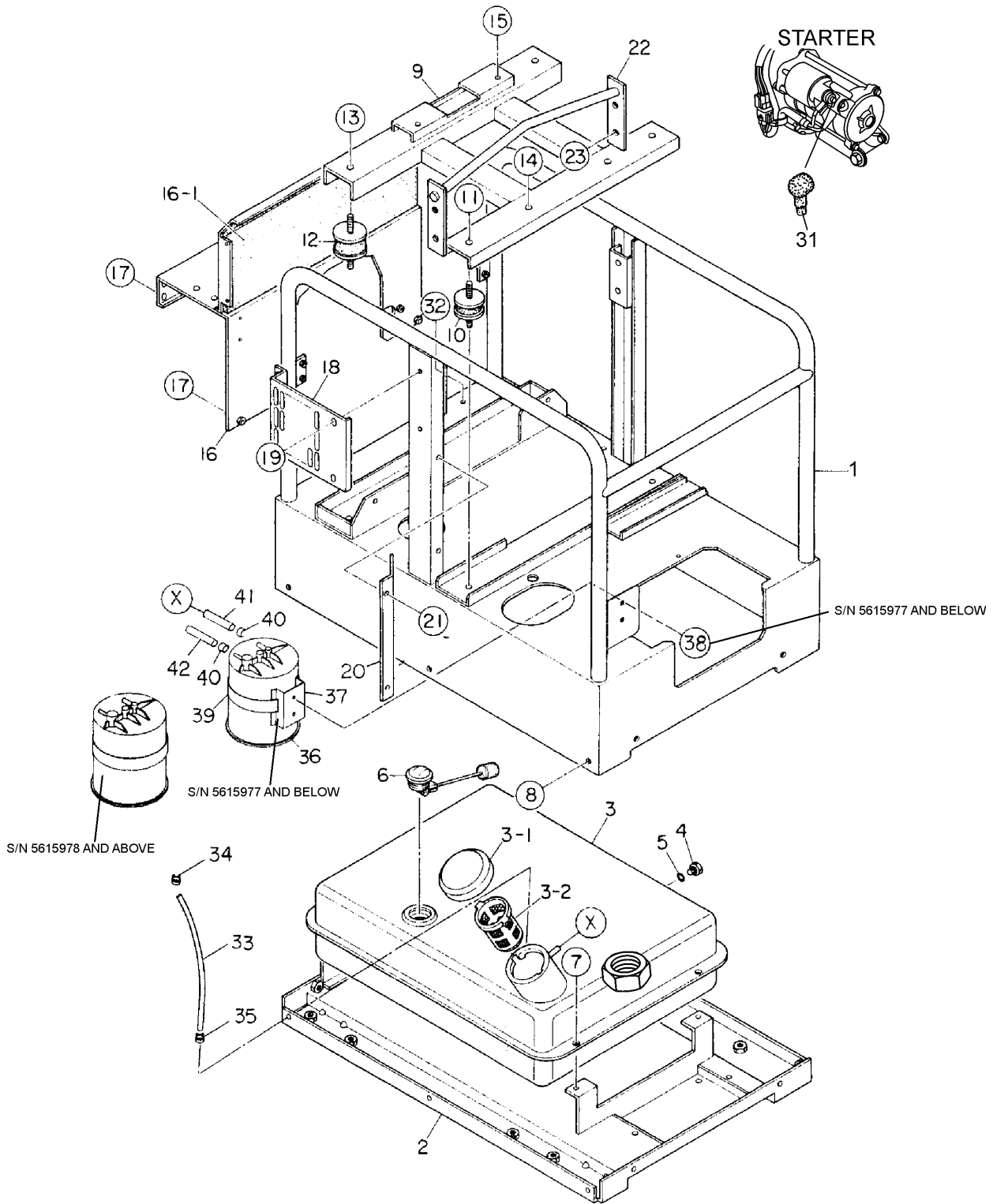
# GA9.7HE — PIPE FRAME ASSY. (NO CANISTER)



## GA9.7HE — PIPE FRAME ASSY. (NO CANISTER)

<u>NO.</u>	<u>PART NO.</u>	<u>PART NAME</u>	<u>QTY.</u>	<u>REMARKS</u>
1	A64118000402	PIPE FRAME	1	
2	A6415100003	FLOOR PANEL .....	1	
3	A6365000402	FUEL TANK.....	1	INCLUDES ITEM W/#
3-1#	0810105800	CAP, FUEL TANK	1	
3-2#	0810105900	FUEL FILTER	1	
4	3015530004	DRAIN PLUG	1	
5	0150200011	O-RING	1	
6	0602125032	FUEL GAUGE	1	
7	011008020	HEX. HEAD BOLT.....	4	REPLACES 0017108020
8	011008020	HEX. HEAD BOLT.....	11	REPLACES 0017108020
9	A6418700103	BASE	1	
10	0805083204	RUBBER SUSPENSION	2	
11	0207010000	HEX. NUT	2	
12	7605419004A	RUBBER SUSPENSION .....	2	REPLACES P/N 7605419004
13	0207010000	HEX. NUT	2	
14	0010110045	HEX. HEAD BOLT	2	
14A	0207010000	HEX. NUT	2	
15	0012308030	HEX. HEAD BOLT	2	
16	A6425400303	BRACKET	1	
16-1	A6498200004	LINING	1	
17	0017106016	HEX, HEAD BOLT	8	
18	A6332300204	COVER	1	
19	0017106016	HEX. HEAD BOLT	4	
20	A6418400304	AIR GUIDE	1	
21	0017106016	HEX. HEAD BOLT	2	
22	A6435300003	HANGER	1	
23	0017110025	HEX. HEAD BOLT	4	
31	D1343200604	TERMINAL CAP	1	
32	0019206016	HEX. HEAD BOLT	1	
33	0605513143	HOSE	1	
34	0605515240	HOSE BAND	1	
35	0605515093	HOSE BAND	1	

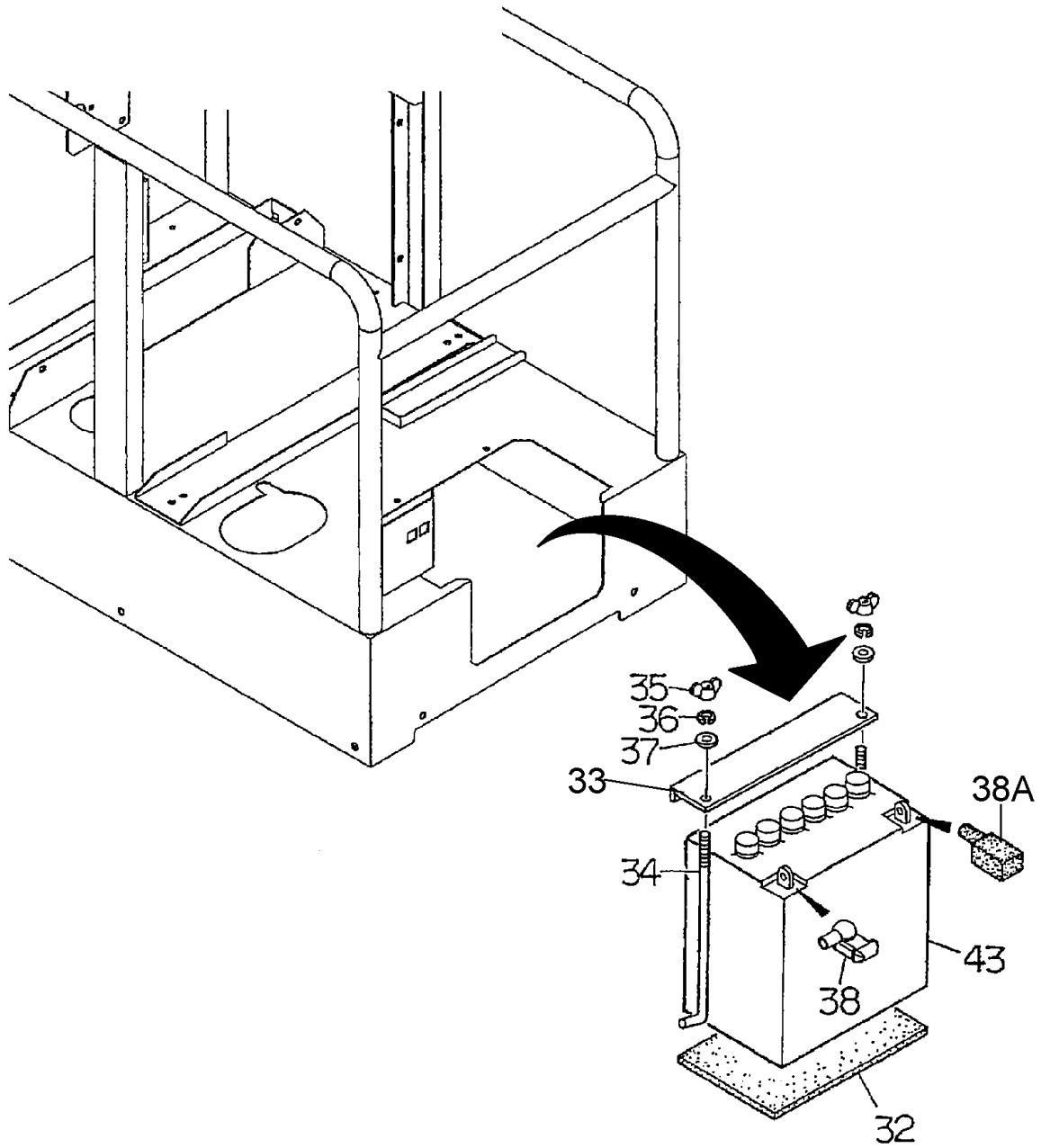
# GA9.7HE — PIPE FRAME ASSY. (W/CANISTER)



## GA9.7HE — PIPE FRAME ASSY. (W/CANISTER)

NO.	PART NO.	PART NAME	QTY.	REMARKS
1	A6417000002	PIPE FRAME .....	1.....	S/N 5615977 AND BELOW
1	A6417000012	PIPE FRAME .....	1.....	S/N 5615978-5617959
1	A6417000022	PIPE FRAME .....	1.....	S/N 5617960 AND ABOVE
2	A6414100003	FLOOR PANEL .....	1.....	S/N 5615977 AND BELOW
2	A6414100013	FLOOR PANEL .....	1.....	S/N 5615978 AND ABOVE
3	A6364000002	FUEL TANK	1	INCLUDES ITEM W/#
3-1#	A9924800104	CAP, FUEL TANK/STRAINER	1	
3-2#	0605505120	FUEL FILTER	1	
4	3015530004	DRAIN PLUG	1	
5	0150200011	O-RING	1	
6	0602125032	FUEL GAUGE	1	
7	011008020	HEX. HEAD BOLT .....	4.....	REPLACES 0017108020
8	011008020	HEX. HEAD BOLT .....	11.....	REPLACES 0017108020
9	A6418700103	BASE .....	1.....	S/N 5615977 AND BELOW
9	A6418700113	BASE .....	1.....	S/N 5615978-5617959
9	A6418700123	BASE .....	1.....	S/N 5617960 AND ABOVE
10	0805083204	RUBBER SUSPENSION	2	
11	0207010000	HEX. NUT	2	
12	7605419004A	RUBBER SUSPENSION .....	2.....	REPLACES P/N 7605419004
13	0207010000	HEX. NUT	2	
14	0010110045	HEX. HEAD BOLT	2	
14A	0207010000	HEX. NUT	2	
15	0012308030	HEX. HEAD BOLT	2	
16	A6425400303	BRACKET .....	1.....	S/N 5615977 AND BELOW
16	A6425400313	BRACKET .....	1.....	S/N 5615978-5617959
16	A6425400323	BRACKET .....	1.....	S/N 5617960 AND ABOVE
16-1	A6498200004	LINING	1	
17	0017106016	HEX. HEAD BOLT	8	
18	A6332300204	COVER .....	1.....	UP TO S/N 5617959
19	0017106016	HEX. HEAD BOLT .....	4.....	UP TO S/N 5617959
20	A6418400304	AIR GUIDE	1	
21	0017106016	HEX. HEAD BOLT	2	
22	A6435300003	HANGER	1	
23	0017110025	HEX. HEAD BOLT	4	
31	D1343200604	TERMINAL CAP	1	
32	0019206016	HEX. HEAD BOLT	1	
33	0605513143	HOSE	1	
34	0605515240	HOSE BAND	1	
35	0605515093	HOSE BAND	1	
36	Y0605507003	CANISTER	1	
37	A6261600104	BRACKET .....	1.....	S/N 5615977 AND BELOW
38	0016906015	HEX. HEAD BOLT .....	1.....	S/N 5615977 AND BELOW
39	0605515211	BAND	1	
40	0605515223	HOSE BAND	4	
41	0605513206	BAND	1	
42	0605513207	BAND	1	

# GA9.7HE — BATTERY ASSY.



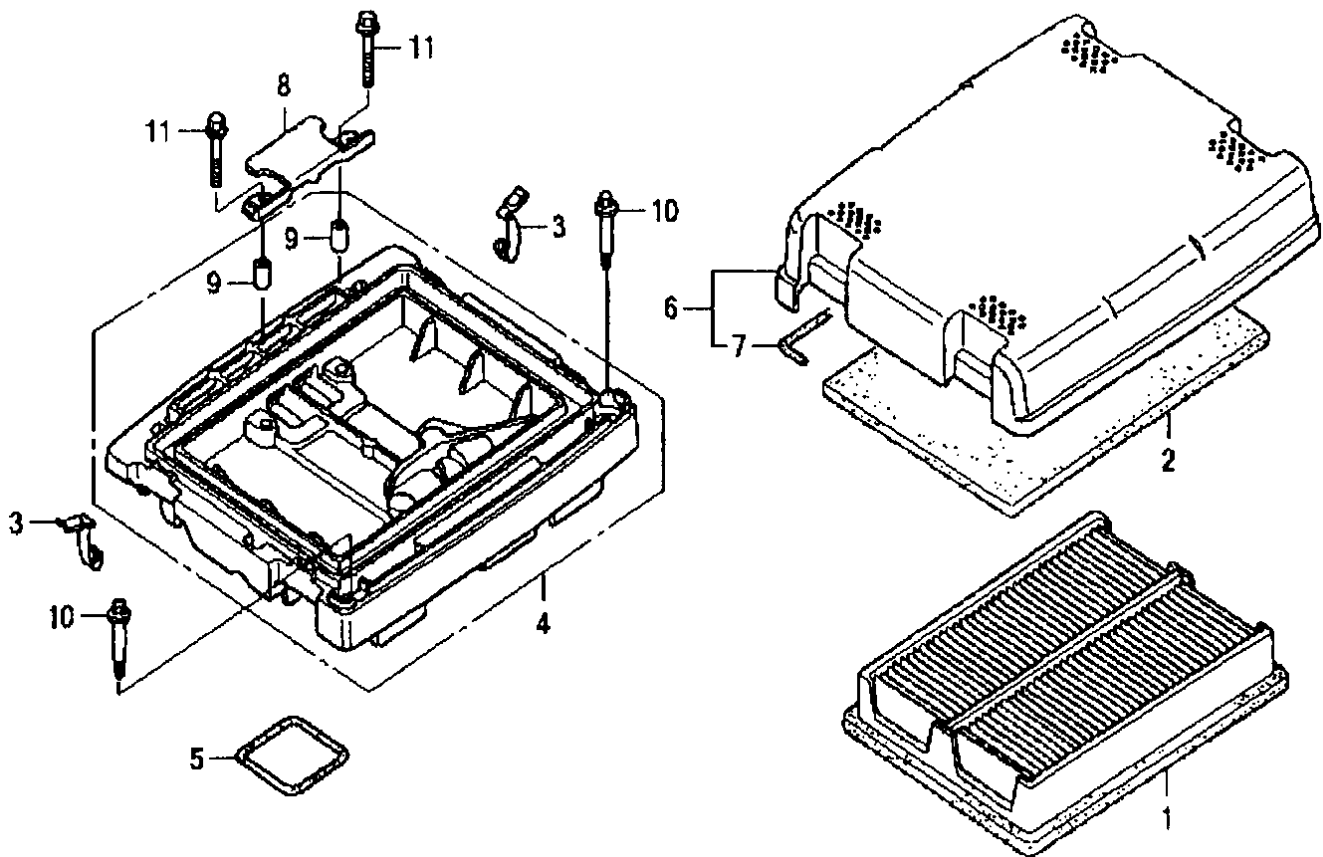


## GA9.7HE — BATTERY ASSY.

---

<u>NO.</u>	<u>PART NO.</u>	<u>PART NAME</u>	<u>QTY.</u>	<u>REMARKS</u>
24	A6345200204	BATTERY SHEET	1	
25	D1343200204	BATTERY BAND	1	
26	0805082704	BATTERY BOLT	2	
27	0037806000	WING NUT	2	
28	0040006000	WASHER, LOCK	2	
29	0041206000	WASHER, FLAT	2	
30	0602220600	TERMINAL CAP (RED)	1	
30A	0602220601	TERMINAL CAP (BLK) .....	1.....	REPLACES P/N 0602220601
43	34533	BATTERY, 12 VOLT .....	1.....	INTERSTATE SP-30

# HONDA GX610K1VD/U1VD — AIR CLEANER ASSY.



## HONDA GX610K1VD/U1VD — AIR CLEANER ASSY.

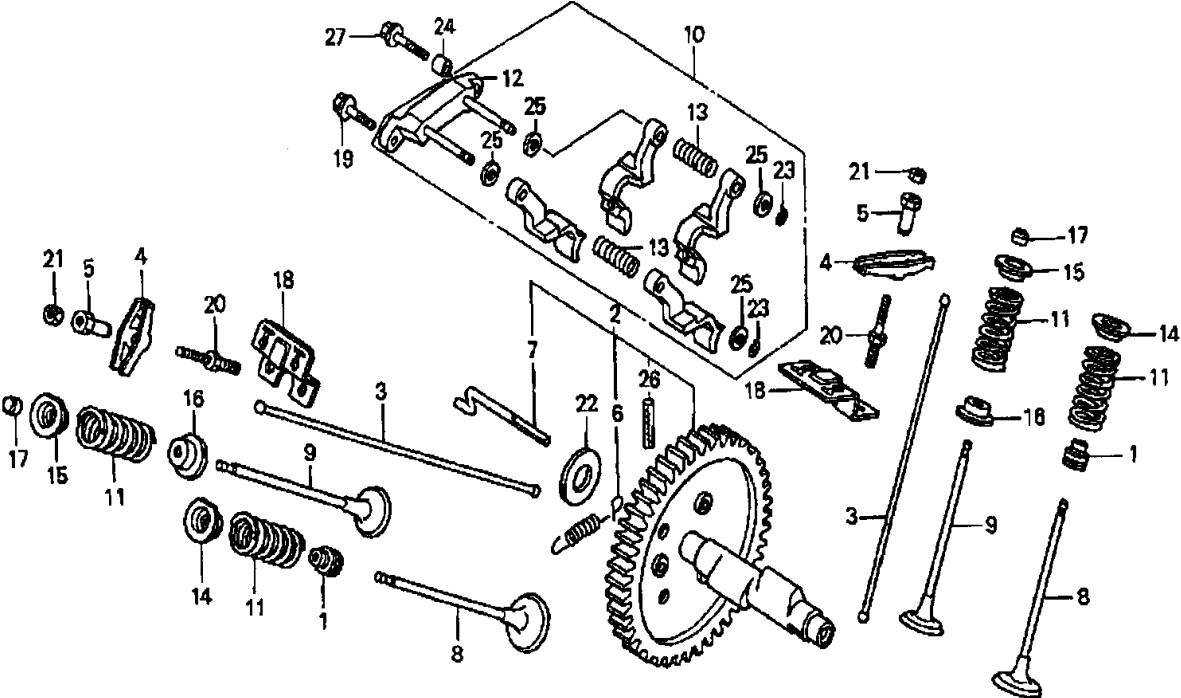
NO.	PART NO.	PART NAME	QTY.	REMARKS
1◆	17210ZJ1841	ELEMENT COMP., AIR CLEANER.....	1.....	USE UP TO S/N 2017952
1◆	17210ZJ1842	ELEMENT COMP., AIR CLEANER.....	1.....	USE FROM S/N 2017953
1◇	17210ZJ1842	ELEMENT COMP., AIR CLEANER	1	
2	17218ZJ1840	FILTER OUTER	1	
3	17219ZJ1840	CLIP AIR CLEANER	4	
4	17220ZJ1840	CASE COMP., AIR CLEANER	1	
4	17220ZJ1840	CASE COMP., AIR CLEANER.....	1.....	USE UP TO S/N 1077169
4	17229ZJ1840	CASE COMP., AIR CLEANER.....	1.....	USE FROM S/N 1077170
5	17229ZJ1840	SEAL, AIR CLEANER CASE	1	
6◆	17230ZJ1840	COVER ASSY., AIR CLEANER	1	
6◇	17230ZJ1840	COVER ASSY., AIR CLEANER	1	
6◇	17230ZJ1841	COVER ASSY., AIR CLEANER	1	
7	17233ZJ1840	SEAL, AIR CLEANER COVER	1	
8	17234ZJ1840	PLATE, AIR CLEANER SETTING	1	
9	17238JZ4830	COLLAR A, AIR CLEANER	2	
10	90003ZJ1840	BOLT, SPECIAL 5 MM	2	
11	957010602800	BOLT, FLANGE 6X28	2	



◆GX610K1VD: Model GA9.7HE DEC. 2003 AND BELOW

◇GX610U1VD: Model GA9.7HE APRIL 2008 AND ABOVE

**HONDA GX610K1VD/U1VD ENGINE — CAMSHAFT ASSY.**



## HONDA GX610K1VD/U1VD ENGINE — CAMSHAFT ASSY.

<u>NO.</u>	<u>PART NO.</u>	<u>PART NAME</u>	<u>QTY.</u>	<u>REMARKS</u>
1	12209ZE8003	SEAL, VALVE STEM	2	
2	14100ZJ1842	CAMSHAFT ASSY.	1	
3	14410ZJ1840	ROD, PUSH	4	
4	14431ZE2010	ARM, VALVE ROCKER	4	
5	14451ZE1013	PIVOT, ROCKER ARM	4	
6\$	14568ZJ1841	SPRING, WEIGHT RETURN	1	
7	14576ZJ1840	PIN, DECOMPRESSION	1	
8	14711ZE3000	VALVE, IN.	1	
9	14721ZE3000	VALVE, EX.	1	
10	14730ZJ1841	LIFTER ASSY., VALVE	1	
11	14751ZE2003	SPRING, VALVE	2	
12	14760ZJ1840	SHAFT COMP., VALVE LIFTER	1	
13	14764ZJ1840	SPRING, VALVE LIFTER	2	
14	14771ZE2000	RETAINER, IN. VALVE SPRING	2	
15	14773ZE2000	RETAINER, EX. VALVE SPRING	2	
16	14775ZE2010	SEAT, VALVE SPRING	2	
17	14781ZE2000	ROTATOR, VALVE	2	
18	14791ZE2010	PLATE, PUSH ROD GUIDE	2	
19	90005896000	BOLT, FLANGE, 5X16	1	
20	90012ZE0010	BOLT, PIVOT (8MM)	4	
21	90206ZE1000	NUT, PIVOT ADJ.	4	
22	90446357000	WASHER, THRUST, 17.2MM	1	
23	90602ZE1000	CLIP, GOVERNOR HOLDER	2	
24	90702GB6910	DOWEL PIN, 8X12	1	
25	9410106800	WASHER, FLAT, 6MM	4	
26	9430560282	PIN, SPRING, 6X28	1	
27	957010602500	BOLT, FLANGE, 6X25	1	



# HONDA GX610K1VD/U1VD ENGINE — CARBURETOR ASSY.

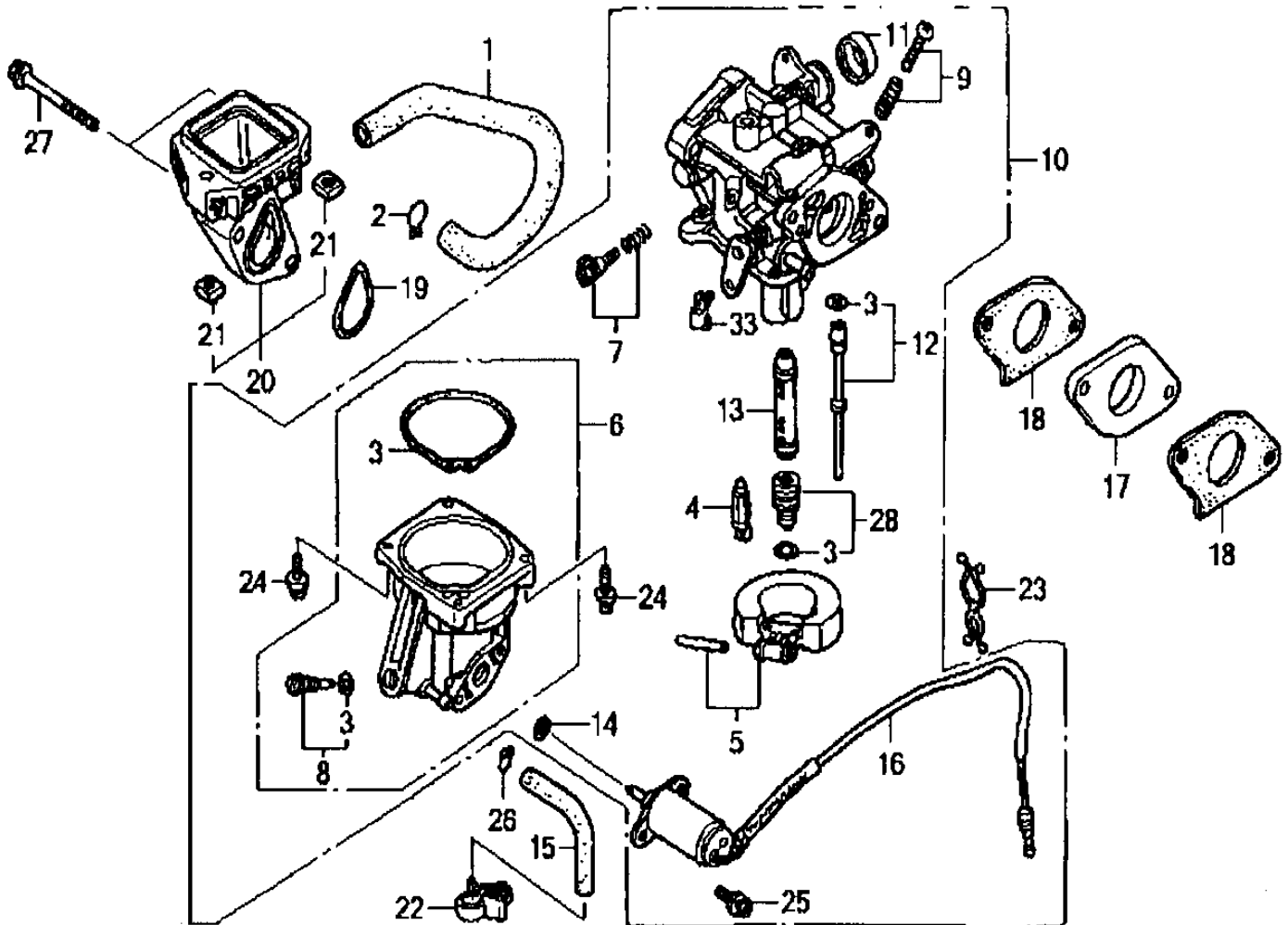
NO.	PART NO.	PART NAME	QTY.	REMARKS
1	12357ZJ1840	TUBE, BREATHER	1	
2	15772551000	CLIP, BREATHER TUBE	1	
3◆	16010ZG8000	GASKET SET .....	1.....	USE UP TO S/N BG21H C INCLUDES ITEMS W/\$
3◆	16010ZJ0911	GASKET SET .....	1.....	USE FROM S/N BG21Q A INCLUDES ITEMS W/\$
3◇	16010ZJ0911	GASKET SET	1	
4#	16011KCK910	VALVE SET, FLOAT	1	
5#	16013ZV4005	FLOAT SET	1	
6◆#	16015ZJ1841	CHAMBER SET, FLOAT .....	1.....	USE UP TO S/N BG21H C INCLUDES ITEMS W/#
6◆#	16015ZJ1W01	CHAMBER SET, FLOAT .....	1.....	USE FROM S/N BG21Q A INCLUDES ITEMS W/#
6◇ #	16015ZJ1W01	CHAMBER SET, FLOAT	1	
7#	16016ZJ1010	SCREW SET	1	
8\$	16024124760	SCREW SET, DRAIN	1	
9#	16028ZG8000	SCREW SET	1	
10◆	16100ZJ0881	CARBURETOR ASSY. (BG21N A) .....	1.....	USE UP TO S/N 2014887 INCLUDES ITEMS W/#
10◆	16100ZJ0911	CARBURETOR ASSY. (BG21Q A) .....	1.....	USE FROM S/N 2014888 INCLUDES ITEMS W/#
10◇	16100ZJ0911	CARBURETOR ASSY. (BG21Q A) .....	1.....	USE UP TO S/N 1006893 INCLUDES ITEMS W/#
10◇	16100ZJ0912	CARBURETOR ASSY. (BG21Q B) .....	1.....	USE FROM S/N 1006894 INCLUDES ITEMS W/#
11	16148141881	CAP, CHOKE LEVER DUST	1	
12#\$	16150ZJ0831	JET SET (#58)	1	
13#\$	16166ZJ0831	NOZZLE, MAIN	1	
14◆\$	16178548004	O-RING (5.8X1.9) .....	1.....	USE UP TO S/N BG21N A
14◆\$	16178ZJ0911	O-RING .....	1.....	USE FROM S/N BG21Q A
14◇ \$	16178ZJ0911	O-RING	1	



◆GX610K1VD: Model GA9.7HE DEC. 2003 AND BELOW

◇ GX610U1VD: Model GA9.7HE APRIL 2008 AND ABOVE

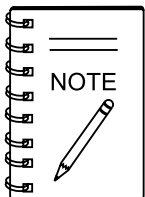
# HONDA GX610K1VD/U1VD ENGINE — CARBURETOR ASSY.





# HONDA GX610K1VD/U1VD ENGINE — CARBURETOR ASSY.

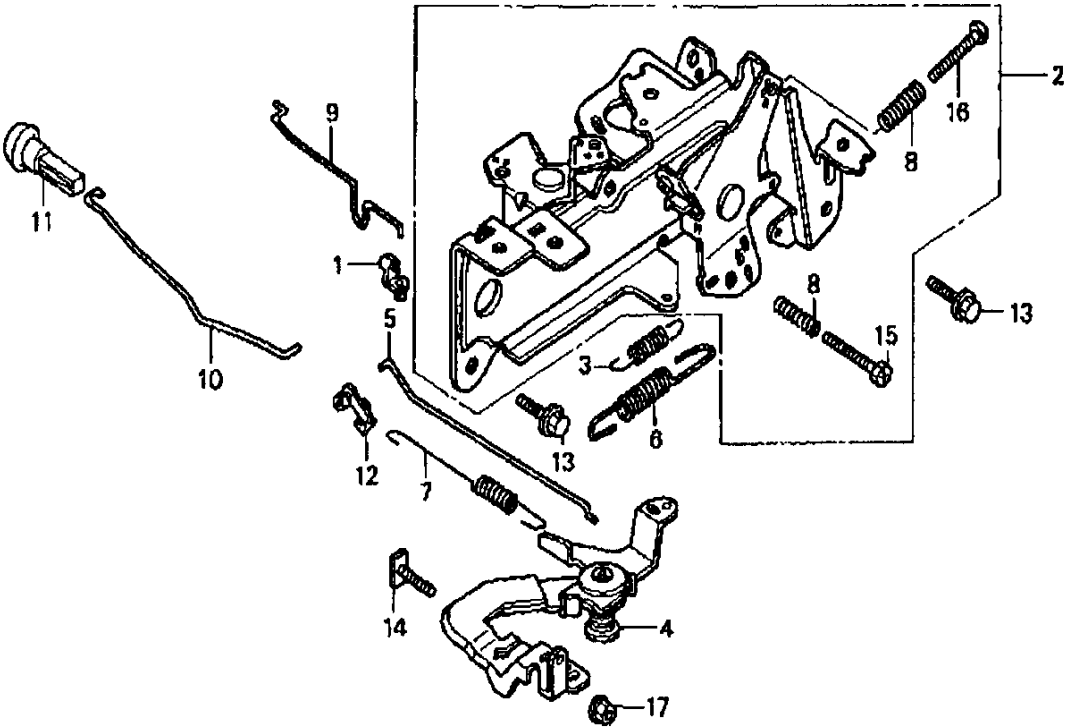
NO.	PART NO.	PART NAME	QTY.	REMARKS
15	16198ZJ1840	TUBE DRAIN .....	1.....	USE UP TO S/N 2073018
16◆#	16200ZJ0841	VALVE ASSY., SOLENOID .....	1.....	USE UP TO S/N 2067379
16◆#	16200ZJ1841	VALVE ASSY., SOLENOID .....	1.....	USE FROM S/N 2067380
16◇#	16200ZJ1841	VALVE ASSY., SOLENOID	1	
17	16211ZJ0841	INSULATOR, CARBURETOR	1	
18	16221ZJ1840	GASKET, CARBURETOR	2	
19	17228ZG8003	GASKET, AIR CLEANER	1	
20	17410ZJ1840	ELBOW COMP., AIR CLEANER.....	1.....	INCLUDES ITEMS W/%
21%	90314ZJ1840	NUT, INSERT, 6 MM	2	
22	90682959661	CLIP B, CABLE	1	
23	91402ZJ1841	CLIP, PURSE LOCK	1	
24#	938920401418	SCREW-WASHER (4X12)	4	
25#	938920501218	SCREW-WASHER (5X12)	2	
26	9500202080	CLIP, TUBE (B8)	1	
27	958010612000	BOLT, FLANGE (6X120)	2	
28#\$	99201ZG80880	JET SET, MAIN (#88)	1	
28#\$	99201ZG80900	JET SET, MAIN (#90 HIGH ALTITUDE)	1	
28#\$	99201ZG80920	JET SET, MAIN (#92 HIGH ALTITUDE)	1	
33#	16126ZJ1841	ARM, THROTTLE LINKAGE	1	



◆GX610K1VD: Model GA9.7HE DEC. 2003 AND BELOW

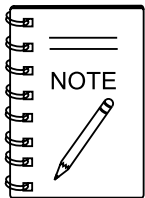
◇GX610U1VD: Model GA9.7HE APRIL 2008 AND ABOVE

# HONDA GX610K1VD/U1VD ENGINE — CONTROL ASSY.



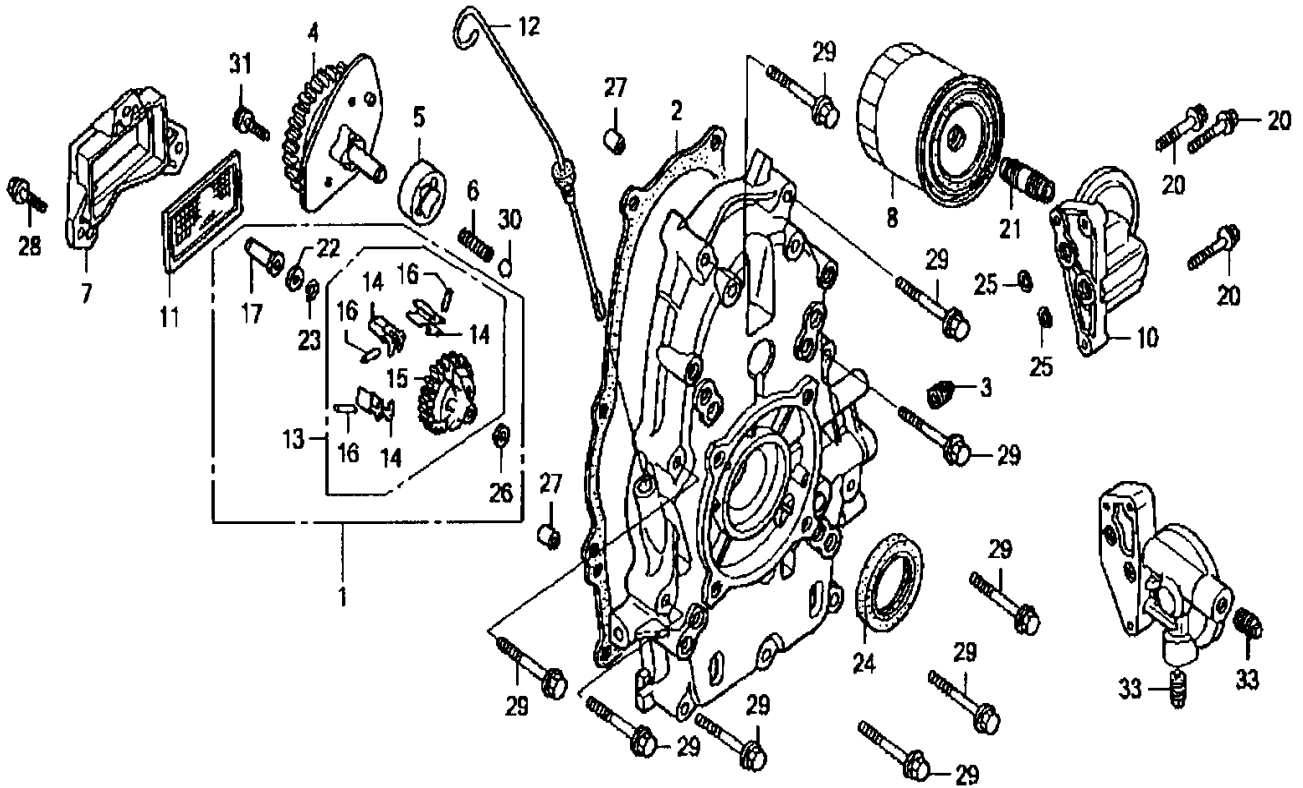
# HONDA GX610K1VD/U1VD ENGINE — CONTROL ASSY.

<u>NO.</u>	<u>PART NO.</u>	<u>PART NAME</u>	<u>QTY.</u>	<u>REMARKS</u>
1	16263883W10	JOINT ROD	1	
2	16500ZJ1890	CONTROL ASSY., AUTO THROTTLE .....	1.....	INCLUDES ITEMS W/#
3	16534ZJ1840	SPRING STARTER	1	
4◆	16550ZJ1841	ARM COMP., GOVERNOR.....	1.....	UP TO S/N 2020000
4◆	16550ZJ1842	ARM COMP., GOVERNOR.....	1.....	FROM S/N 2020001
4◇	16550ZJ1842	ARM COMP., GOVERNOR	1	
5	16555ZJ1840	ROD, GOVERNOR	1	
6	16561ZJ1850	SPRING, GOVERNOR, MANUAL	1	
7	16562ZJ1840	SPRING, THROTTLE RETURN	1	
8#	16584883300	SPRING, CONTROL ADJUSTING	2	
9	16611ZJ1840	ROD, CHOKE CONTROL	1	
10	16628ZJ1850	ROD, CHOKE KNOB	1	
11	17951921030	KNOB, CHOKE	1	
12	17957ZV4000	BUSH, LINKAGE	1	
13	90014952000	BOLT, FLANGE, 6X14	2	
14	90015ZE3790	BOLT, GOVERNOR ARM	1	
15#	92301050250A	BOLT, RECESSED, 5X25	1	
16#	93500050350A	SCREW, PAN, 5X35	1	
17	9405006000	NUT, FLANGE 6MM	1	



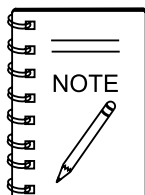
- ◆GX610K1VD: Model GA9.7HE DEC. 2003 AND BELOW
- ◇ GX610U1VD: Model GA9.7HE APRIL 2008 AND ABOVE

# HONDA GX610K1VD/U1VD ENGINE — CRANKCASE COVER ASSY.



# HONDA GX610K1VD/U1VD ENGINE — CRANKCASE COVER ASSY.

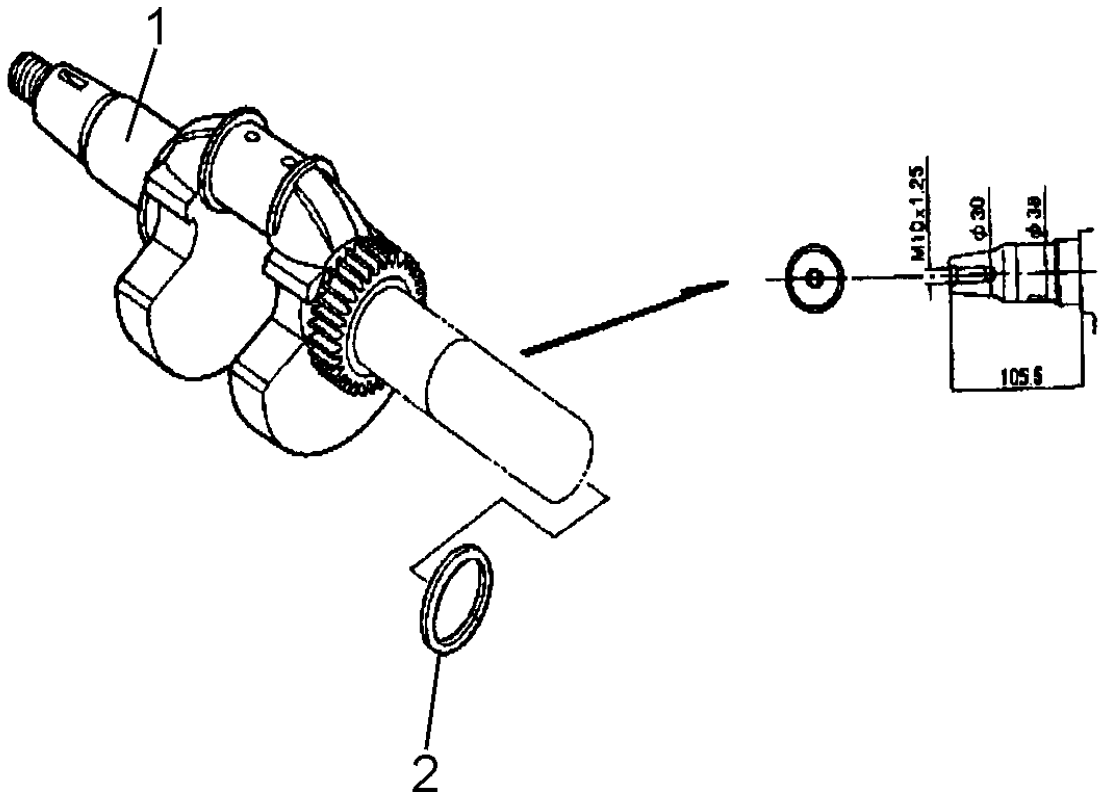
NO.	PART NO.	PART NAME	QTY.	REMARKS
1◆	11300ZJ1850	COVER ASSY., CRANKCASE.....	1.....	UP TO S/N 2017181 INCLUDES ITEMS W/\$
1◆	11300ZJ1851	COVER ASSY., CRANKCASE.....	1.....	FROM S/N 2017182 INCLUDES ITEMS W/\$
1◇	11300ZJ1852	COVER ASSY., CRANKCASE.....	1.....	UP TO S/N 1022498 INCLUDES ITEMS W/\$
1◇	11300ZJ1853	COVER ASSY., CRANKCASE.....	1.....	FROM S/N 1009791 INCLUDES ITEMS W/\$
2	11381ZJ1840	GASKET, CASE COVER	1	
3	12105ZA0701	BOLT, SEALING	1	
4	15120ZJ1000	COVER ASSY., OIL PUMP, TWO BOLTS	1	
4◇	15120ZJ1000	COVER ASSY., OIL PUMP, TWO BOLTS.....	1.....	UP TO S/N 1022498
4◇	15120ZJ1010	COVER ASSY., OIL PUMP, THREE BOLTS	1	
5	15124ZJ1003	ROTOR, OIL PUMP OUTER	1	
6	15232ZJ1000	SPRING, RELIEF VALVE	1	
7	15348ZJ1840	COVER, OIL FILTER	1	
8	154000ZJ1004	CARTRIDGE, OIL FILTER	1	
10	15411ZJ1840	BASE OIL FILTER	1	
11	15427ZJ1000	SCREEN, OIL FILTER	1	
12	15655ZJ1861	GAUGE COMP., OIL LEVEL	1	
13\$	16510ZJ1840	GOVERNOR ASSY.....	1.....	INCLUDES ITEMS W/#
14#	16511ZJ1840	WEIGHT GOERNOR	3	
15#	16512ZJ1840	HOLDER, GOVERNOR WEIGHT	1	
16#	16513ZE2000	PIN, GOVERNOR WEIGHT	3	
17◆\$	16531Z0A000	SLIDER, GOVERNOR.....	1.....	UP TO S/N 2017181
17◆\$	16531ZE2000	SLIDER, GOVERNOR.....	1.....	FROM S/N 2017182
17◇\$	16531Z0A000	SLIDER, GOVERNOR	1	
20	90015883000	BOLT, FLANGE, 6X28	3	
21	90018PN3000	HOLDER, OIL FILTER	1	
22\$	90473147000	WASHER, 6X16	1	
23\$	90602ZE1000	CLIP, GOVERNOR HOLDER	1	
24	91202ZJ1841	OIL SEAL, 35X58X9	1	
25	91302ZE9003	O-RING, 11.8X2.4	2	
26\$	9410106800	WASHER, FLAT, 6MM	1	
27	9430108140	DOWEL PIN, 8X14	2	
28	957010602000	BOLT, FLANGE, 6X20	3	
29	957010805000	BOLT, FLANGE, 8X50	9	
30	9621112000	BALL, STEEL, #12 (3/8)	1	
31	966000601600	BOLT, SOCKET 6X16	2	
33	12105ZA0701	BOLT, SEALING	2	



◆GX610K1VD: Model GA9.7HE DEC. 2003 AND BELOW

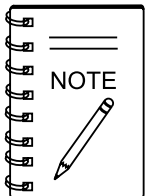
◇GX610U1VD: Model GA9.7HE APRIL 2008 AND ABOVE

# HONDA GX610K1VD/U1VD ENGINE — CRANKSHAFT ASSY.



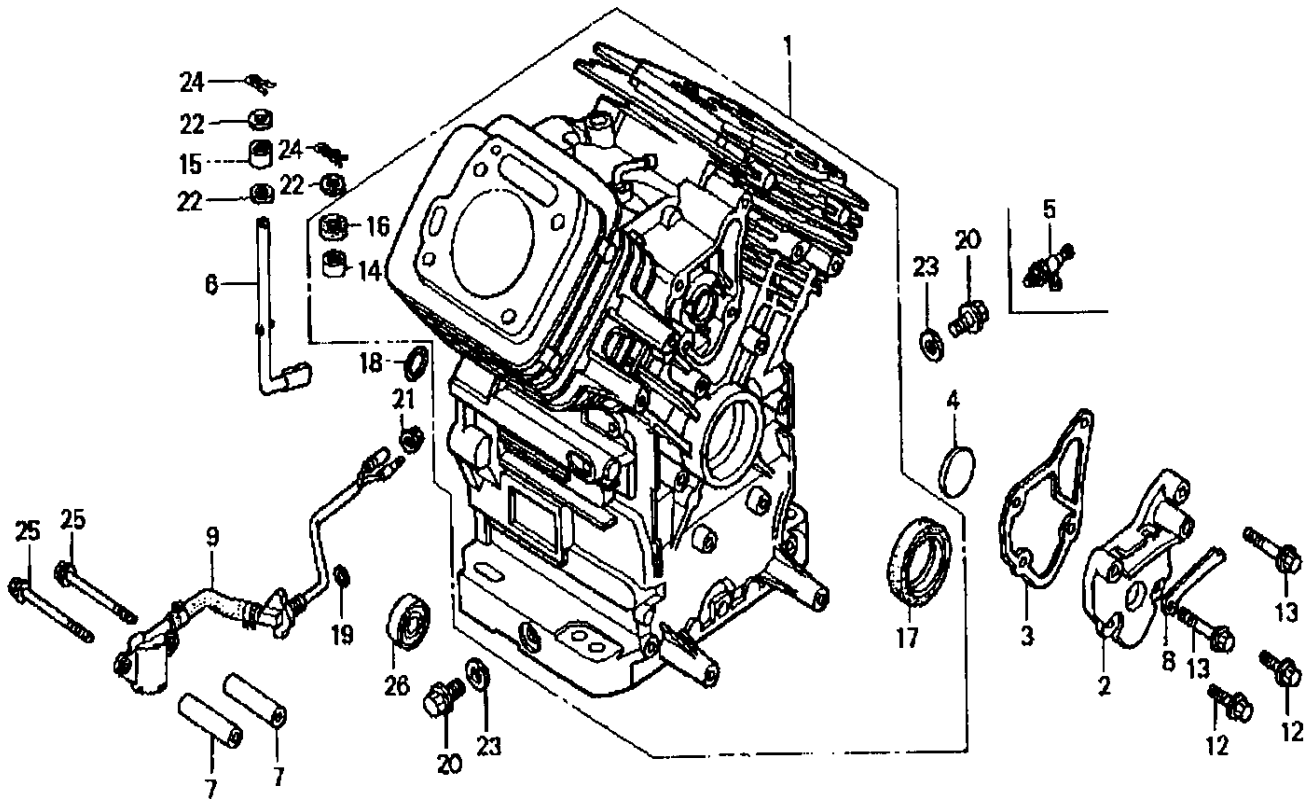
# HONDA GX610K1VD/U1VD ENGINE — CRANKSHAFT ASSY.

<u>NO.</u>	<u>PART NO.</u>	<u>PART NAME</u>	<u>QTY.</u>	<u>REMARKS</u>
1	13310ZJ1880	CRANKSHAFT COMP.	1	
2◇	90401ZJ1000	WASHER, CRANKSHAFT THRUST	1	



- ◆GX610K1VD: Model GA9.7HE DEC. 2003 AND BELOW
- ◇GX610U1VD: Model GA9.7HE APRIL 2008 AND ABOVE

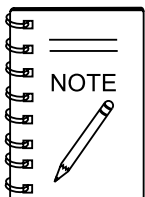
# HONDA GX610K1VD/U1VD ENGINE — CYLINDER BARREL ASSY.





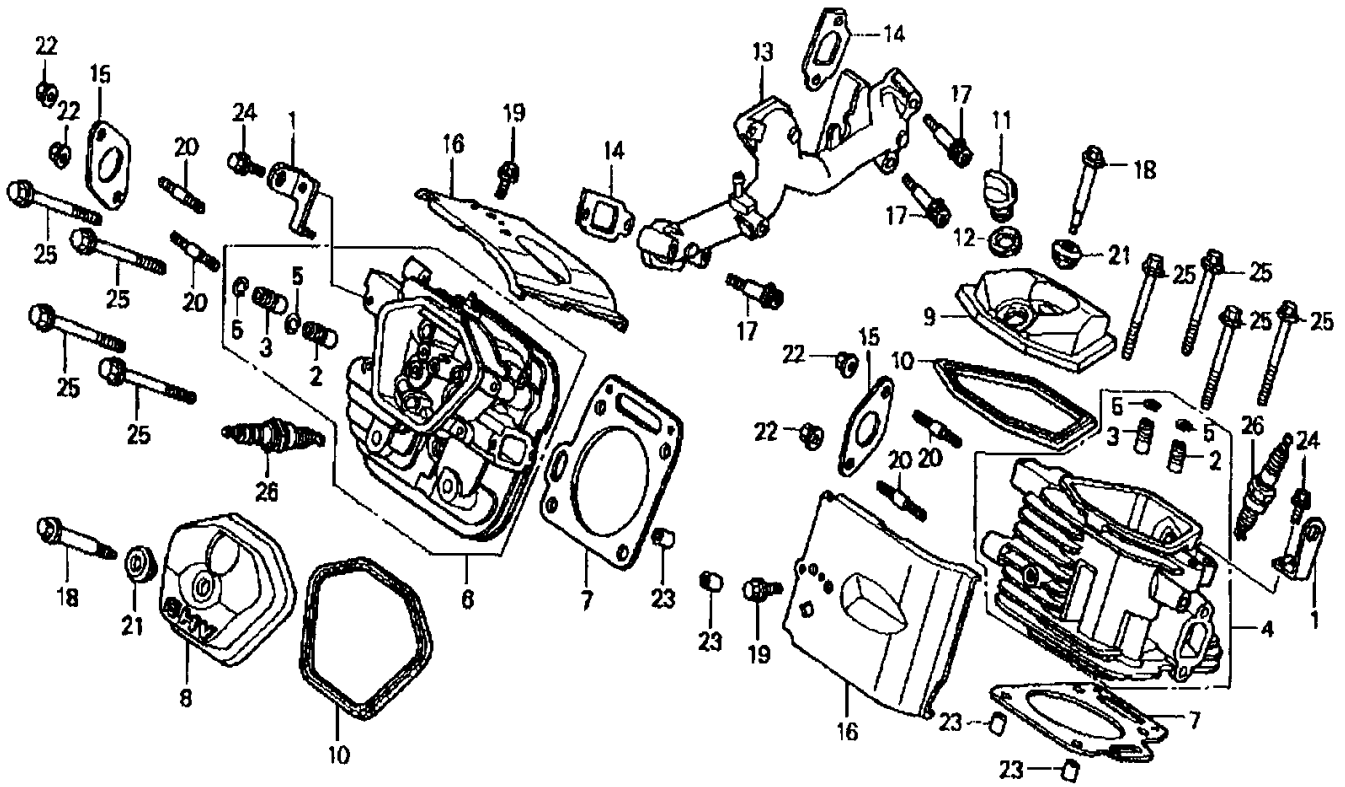
# HONDA GX610K1VD/U1VD ENGINE — CYLINDER BARREL ASSY.

NO.	PART NO.	PART NAME	QTY.	REMARKS
1◆	12000ZJ1406	BARREL ASSY., CYLINDER .....	1.....	INCLUDES ITEMS W/\$
1◇	12000ZJ1406	BARREL ASSY., CYLINDER .....	1.....	UP TO S/N 1077902
		.....		INCLUDES ITEMS W/\$
1◇	12000ZJ1416	BARREL ASSY., CYLINDER .....	1.....	FROM S/N 1077903
		.....		INCLUDES ITEMS W/\$
2	12356ZJ1000	COVER BREATHER	1	
3	12358ZJ1000	PACKING, BREATHER COVER	1	
4	12372ZE2300	VALVE, BREATHER	1	
5	15558ZJ1003	VALVE, OIL SHUT-OFF	1	
6	16541ZJ1840	SHAFT, GOVERNOR ARM	1	
7	25523VD6010	COLLAR, FILTER SETTING	1	
8	31511ZJ1000	CLAMPER CORD	1	
9◆	35480ZJ1841	SWITCH ASSY., OIL LEVEL	1	
9◇	35480ZJ1841	SWITCH ASSY., OIL LEVEL.....	1.....	USE UP TO S.N 1068428
9◇	35480ZJ1842	SWITCH ASSY., OIL LEVEL.....	1.....	USE FROM S/N 1068429
12	90029888000	BOLT, FLANGE, 6X16	2	
13	90031ZE1000	BOLT, FLANGE, 6X32	2	
14\$	91001ZJ1841	BEARING NEEDLE, 8X12.7X11.1	1	
15	91002ZJ1841	BEARING NEEDLE, 8X12X10	1	
16\$	91201ZE9003	OIL SEAL, 8X14X5	1	
17\$	91201ZJ1841	OIL SEAL, 38X58X9	1	
18	91302MB6830	O-RING, 13X3.0	1	
19	91353671004	O-RING, 14MM	1	
20	9280014000	BOLT, DRAIN PLUG, 14MM	2	
21	9405010000	NUT, FLANGE, 10MM	1	
22	9410208800	WASHER, FLAT, 8MM	3	
23	9410914000	WASHER, DRAIN PLUG, 14MM	2	
24	9425108000	PIN, LOCK, 8MM	2	
25	957010607509	BOLT, FLANGE, 6X75	2	
26	961406003010	BEARING, RADIAL BALL, 6003	1	



- ◆GX610K1VD: Model GA9.7HE DEC. 2003 AND BELOW
- ◇GX610U1VD: Model GA9.7HE APRIL 2008 AND ABOVE

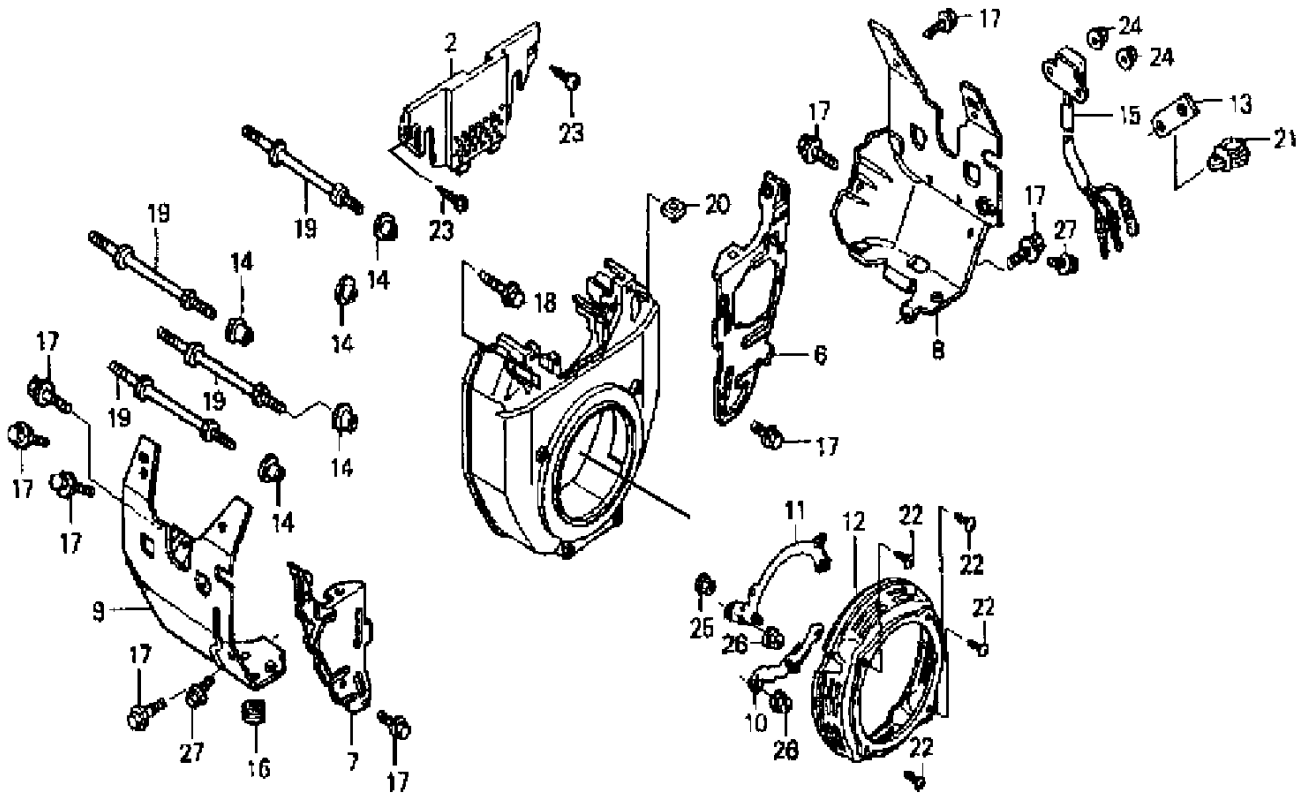
# HONDA GX610K1VD/U1VD ENGINE — CYLINDER HEAD ASSY.



## HONDA GX610K1VD/U1VD ENGINE — CYLINDER HEAD ASSY.

<u>NO.</u>	<u>PART NO.</u>	<u>PART NAME</u>	<u>QTY.</u>	<u>REMARKS</u>
1	11911ZJ1840	HANGER, ENGINE	1	
2#\$	12204ZE2306	GUIDE, INTAKE VALVE (OS)	2	
3#\$	12205ZE1405	GUIDE, EXHAUST VALVE (OS)	2	
4	12210ZJ1406	HEAD COMP., CYLINDER #1.....	1.....	INCLUDES ITEMS W/#
5#\$	12216ZE2300	CLIP, VALVE GUIDE	4	
6	12220ZJ1405	HEAD COMP., CYLINDER #2.....	1.....	INCLUDES ITEMS W\$
7	12251ZJ1841	GASKET, CYLINDER HEAD	1	
8	12311ZJ1840	COVER, HEAD	1	
9	12314ZJ1840	COVER, HEAD FILLER	1	
10	12391ZE2020	PACKING HEAD COVER	2	
11	15611MB0000	CAP, OIL FILLER	1	
12	15625ZJ1840	PACKING, OIL FILLER CAP	1	
13	17101ZJ1840	MANIFOLD INTAKE	1	
14	17151ZJ1841	GASKET, INTAKE MANIFOLD	2	
15	18333ZE3800	GASKET, EXHAUST PIPE	2	
16	19682ZJ1840	SHROUD, HEAD	2	
17	90011ZJ1841	BOLT, SOCKET, 8X45	4	
18	90014ZE2000	BOLT, HEAD COVER	2	
19	90014952000	BOLT, FLANGE, 6X14	2	
20	90018ZJ1840	BOLT, STUD (8X22)	2	
21	90441ZE2010	WASHER, HEAD COVER	1	
22	9405008000	NUT, FLANFE, 8MM	4	
23	9430112200	PIN A, DOWEL (12X20)	4	
25	957011008000	BOLT, FLANGE, 10X80	8	
26	9807952876	SPARK PLUG (BPR5ES) (NGK)	2	
26	980795485V	SPARK PLUG (J14CR-U) (DENSO)	2	

# HONDA GX610K1VD/U1VD ENGINE — FAN COVER ASSY.



# HONDA GX610K1VD/U1VD ENGINE — FAN COVER ASSY.

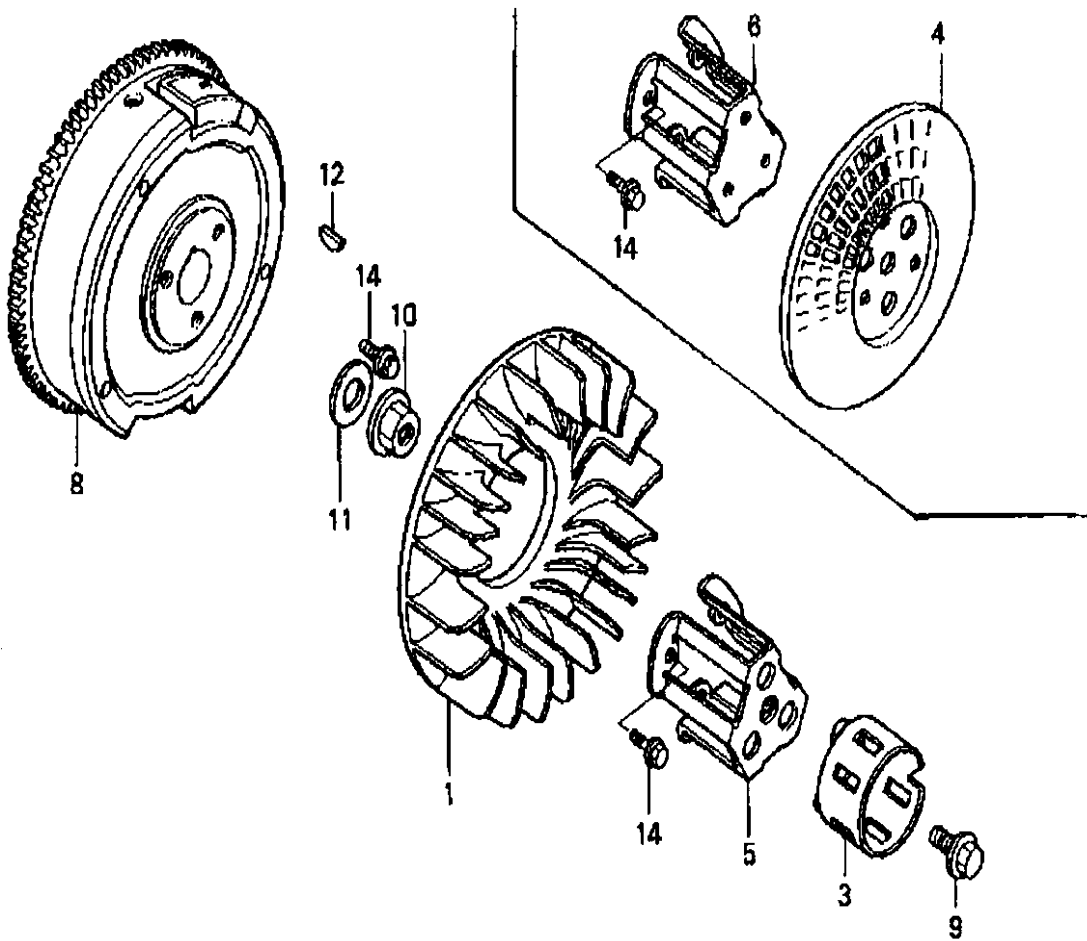
NO.	PART NO.	PART NAME	QTY.	REMARKS
2	16715ZJ1860	COVER, FUEL PUMP MANUAL CHOKE .....	1	
4◆	19611ZJ1800ZB	COVER, FAN , RECOIL START (R8) RED .....	1	USE UP TO S/N 2021866
4◆	19611ZJ1800ZC	COVER, FAN , RECOIL START (R280) RED ....	1	USE FROM S/N 2021867
4◇	19611ZJ1800ZC	COVER, FAN , RECOIL START (R280) RED	1	
6	19612ZJ1840	PLATE, R. SIDE .....	1	USE UP TO S/N 2017309
6◆	19612ZJ1841	PLATE, R. SIDE .....	1	USE FROM S/N 2017310
6◇	19612ZJ1841	PLATE, R. SIDE	1	
7	19614ZJ1840	PLATE, L. SIDE.....	1	USE UP TO S/N 2017309
7◆	19614ZJ1841	PLATE, L. SIDE.....	1	USE FROM S/N 2017310
7◇	19614ZJ1841	PLATE, L. SIDE	1	
8	19631ZJ1850	SHROUD, R. (OIL ALERT)	1	
9◆	19632ZJ1840	SHROUD, L.....	1	USE UP TO S/N 2017309
9◆	19632ZJ1841	SHROUD, L.....	1	USE FROM S/N 2017310
9◇	19632ZJ1841	SHROUD, L.	1	
10	28491ZJ1840	STAY A, RECOIL STARTER	1	
11	28492ZJ1840	STAY B, RECOIL STARTER	1	
12◆	28496ZJ1840ZB	COVER, RECOIL START STAY R8 RED.....	1	USE UP TO S/N 2021866
12◆	28496ZJ1840ZC	COVER, RECOIL START STAY R280 RED.....	1	USE FROM S/N 2021867
12◇	28496ZJ1840ZC	COVER, RECOIL START STAY R280 RED	1	
13	32103ZG8000	BRACKET, WIRE HARNESS CLIP	1	
14	33713GC2000	COLLAR B TAILLIGHT	6	
15◆	34150ZJ1841	ALERT UNIT, OIL.....	1	USE UP TO S/N 2049759
15◆	34150ZJ1842	ALERT UNIT, OIL.....	1	USE UP TO S/N 2049760
15◇	34150ZJ1842	ALERT UNIT, OIL.....	1	USE UP TO S/N 1066058
15◇	34150ZJ1843	ALERT UNIT, OIL.....	1	USE UP TO S/N 1066059
16	80101310000	RUBBER, RR FENDER CUSHION	1	
17	90013883000	BOLT, FLANGE (6X12)	10	
18	90018ZE1000	BOLT, FLANGE (6X23)	2	
19	90042ZJ1840	BOLT, STUD (6X71)	4	
20	90313ZJ1840	NUT, SQUARE 5 MM		
21	91558SD5003	CLIP, WIRE HARNESS , BLACK	1	
22	9390335380	SCREW, TAPPING (5X16)	2	
23	9391325580	SCREW, TAPPING (5X20)	2	
24	9405005000	NUT, FLANGE (5 MM)	2	
25	9405006070	NUT, FLANGE (6 MM)	4	
26	957010600800	BOLT, FLANGE (6X8)	2	



◆GX610K1VD: Model GA9.7HE DEC. 2003 AND BELOW

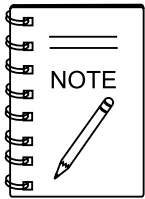
◇GX610U1VD: Model GA9.7HE APRIL 2008 AND ABOVE

# HONDA GX610K1VD/U1VD ENGINE — FLYWHEEL ASSY.



# HONDA GX610K1VD/U1VD ENGINE — FLYWHEEL ASSY.

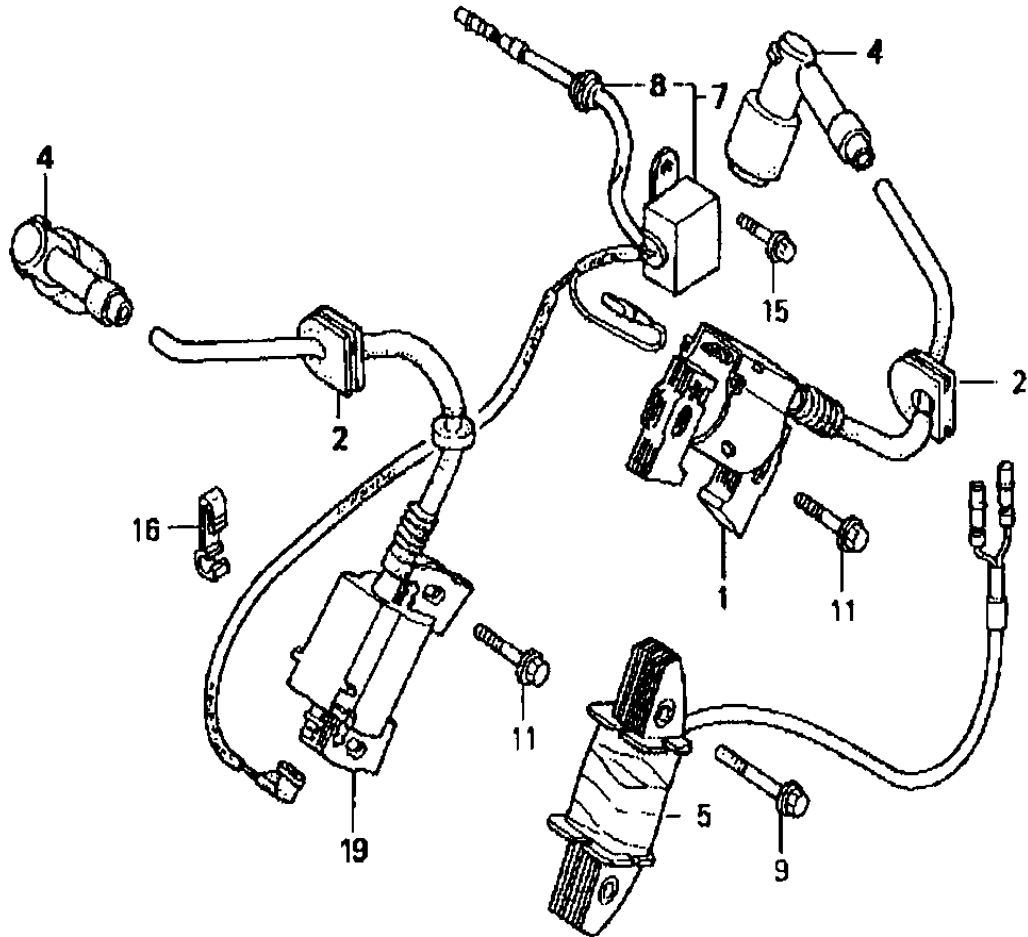
<u>NO.</u>	<u>PART NO.</u>	<u>PART NAME</u>	<u>QTY.</u>	<u>REMARKS</u>
1	19511ZJ1000	FAN, COOLING	1	
3	28451ZJ1801	PULLEY, STARTER	1	
4	28452ZJ1811	GRID SCREEN	1	
5	28453ZJ1801	SPACER, STARTER PULLEY MT.	1	
6	28454ZJ1801	HOLDER, SCREEN GRID	1	
8	31110ZJ1850	FLYWHEEL COMP.	1	
9	90013ZJ1800	BOLT, UBS (12X28)	1	
10	90201ZG3000	NUT, FLANGE (20MM)	1	
11	90401ZG3000	WASHER (20MM)	1	
12	90741ZE2000	KEY, SPECIAL WOODRUFF (25X18)	1	
14	957010801600	BOLT, FLANGE (8X16)	3	



◆GX610K1VD: Model GA9.7HE DEC. 2003 AND BELOW

◇GX610U1VD: Model GA9.7HE APRIL 2008 AND ABOVE

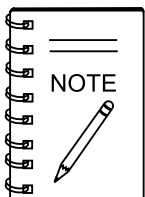
# HONDA GX610K1VD/U1VD ENGINE — IGNITION COIL ASSY.





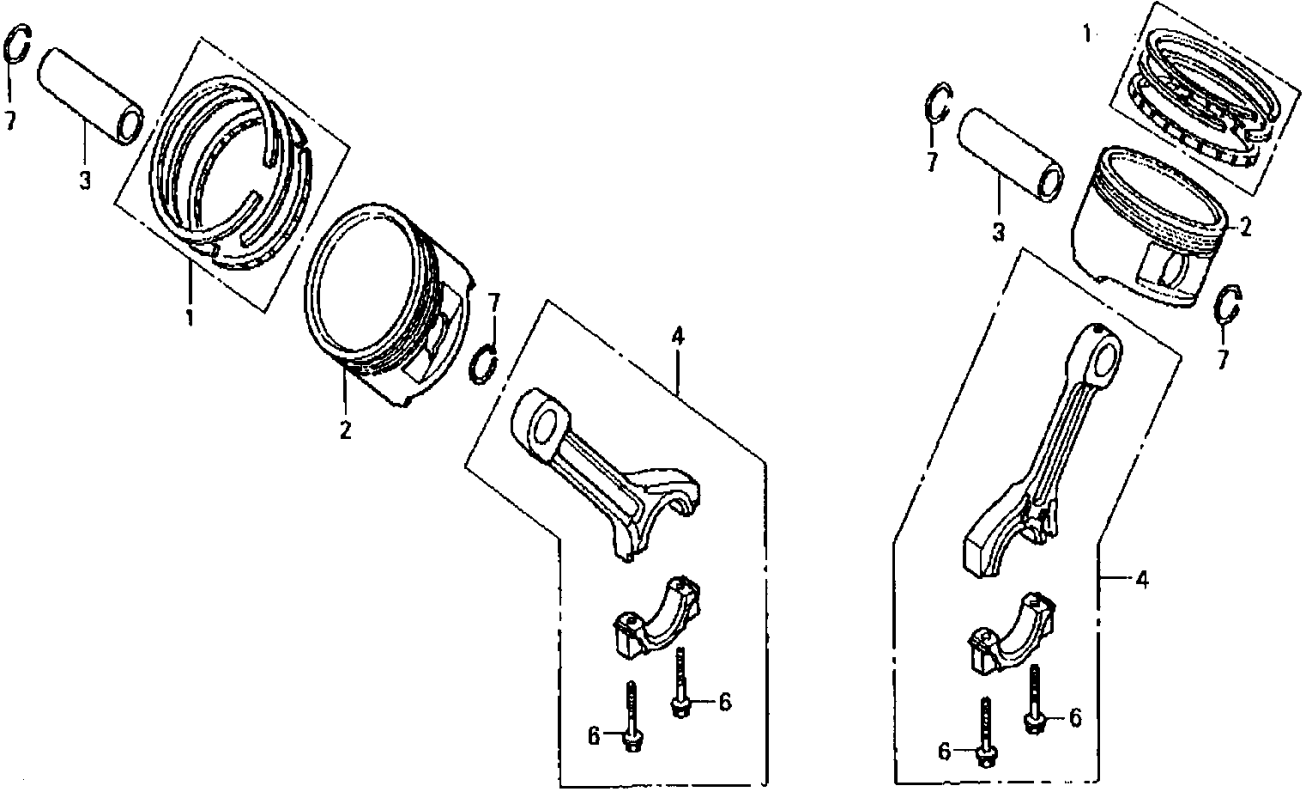
# HONDA GX610K1VD/U1VD ENGINE — IGNITION COIL ASSY.

NO.	PART NO.	PART NAME	QTY.	REMARKS
1◆	30500ZJ1841	COIL ASSY., IGNITION .....	1.....	USE UP TO S/N 2018397
1◆	30500ZJ1842	COIL ASSY., IGNITION .....	1.....	S/N's 2018398~2047154
1◆	30500ZJ1843	COIL ASSY., IGNITION .....	1.....	S/N's 2047155~2049300
1◆	30500ZJ1844	COIL ASSY., IGNITION .....	1.....	USE FROM S/N 2049301
1◇	30500ZJ1844	COIL ASSY., IGNITION .....	1.....	USE UP TO S/N 1020628
1◇	30500ZJ1845	COIL ASSY., IGNITION .....	1.....	USE FROM S/N 1020629
2	30518ZJ1000	GROMMET, HIGH TENSION WIRE	2	
4	30700ZJ1841	CAP ASSY., NOISE SUPPRESSOR	2	
5	31510ZE1811	COIL ASSY., CHARGE (12V/3A)	1	
7◆	31740ZJ1851	DOIDE ASSY., ENGINE STOP	1	INCLUDES ITEM W/#
7◇	31740ZJ1851	DOIDE ASSY., ENGINE STOP .....	1.....	USE UP TO S/N 1065525
7◇	31740ZJ1852	DOIDE ASSY., ENGINE STOP .....	1.....	USE FROM S/N 1065526
8#	63312ZA7000	GROMMET, TOOL		
9	90031ZE1000	BOLT, FLANGE (6X32)	2	
11	90031ZE1000	BOLT, FLANGE (6X32)	2	
15	957010600800	BOLT, FLANGE (6X8)	1	
16	32763PA0000	CLAMP, CORD	1	
17	31630ZJ0881	COIL ASSY., CHARGE (12V/3A)	1	
19◆	30500ZJ1841	COIL ASSY., IGNITION .....	1.....	USE UP TO S/N 2018565
19◆	30500ZJ1842	COIL ASSY., IGNITION .....	1.....	S/N's 2018566~2047154
19◆	30500ZJ1843	COIL ASSY., IGNITION .....	1.....	S/N's 2047155~2049300
19◆	30500ZJ1844	COIL ASSY., IGNITION .....	1.....	USE FROM S/N 2049301
19◇	30500ZJ1844	COIL ASSY., IGNITION .....	1.....	USE UP TO S/N 1020628
19◇	30500ZJ1845	COIL ASSY., IGNITION .....	1.....	USE FROM S/N 1020629



- ◆GX610K1VD: Model GA9.7HE DEC. 2003 AND BELOW
- ◇GX610U1VD: Model GA9.7HE APRIL 2008 AND ABOVE

# HONDA GX610K1VD/U1VD ENGINE — PISTON ASSY.



# HONDA GX610K1VD/U1VD ENGINE — PISTON ASSY.

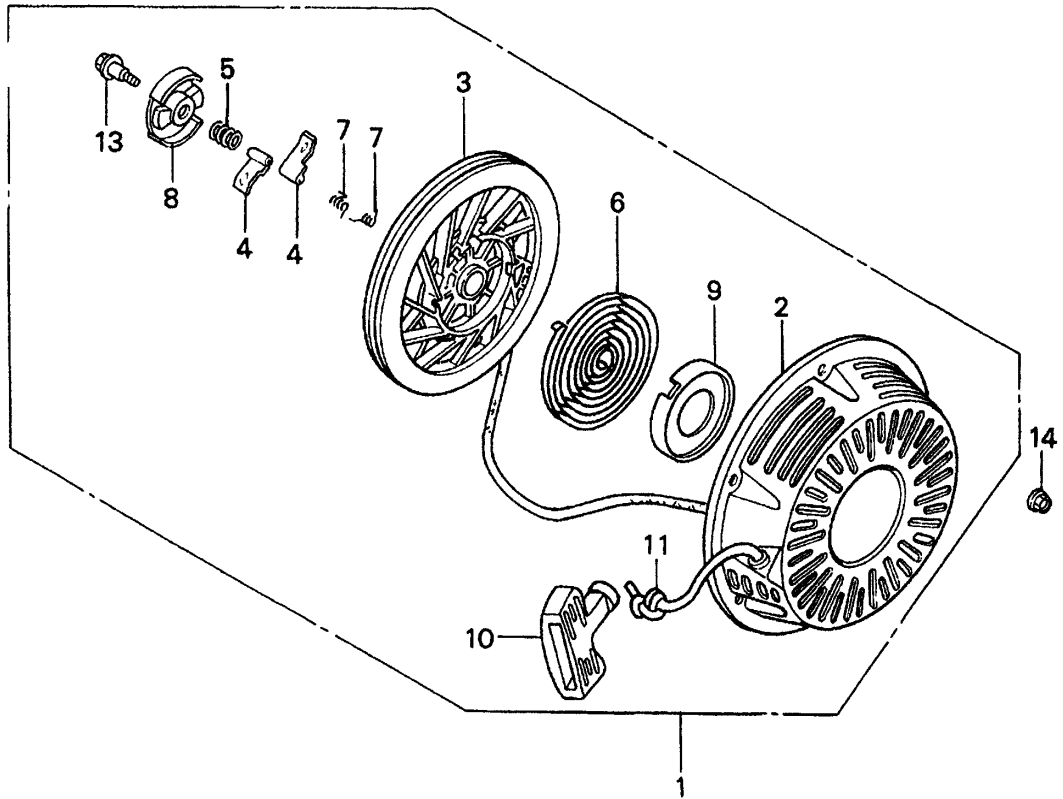
NO.	PART NO.	PART NAME	QTY.	REMARKS
1◆	13010ZJ1841	RING SET, PISTON (STD)	2	
1◇	13010ZJ1841	RING SET, PISTON (STD) .....	2	UP TO S/N 1077252
1◇	13010Z5H004	RING SET, PISTON (STD)	2	
1◆	13011ZJ1841	RING SET, PISTON (0.25) (OPTIONAL)	2	
1◆	13011ZJ1841	RING SET, PISTON (0.25) (OPTIONAL) .....	2	UP TO S/N 1026785
1◇	13011Z5H004	RING SET, PISTON (0.25) (OPTIONAL)	1	
1◆	13012ZJ1841	RING SET, PISTON (0.50) (OPTIONAL)	2	
1◇	13012ZJ1841	RING SET, PISTON (0.50) (OPTIONAL) .....	2	UP TO S/N 1077252
1◇	13012Z5H004	RING SET, PISTON (0.50) (OPTIONAL) .....	2	FROM S/N 1077253
1◆	13013ZJ1841	RING SET, PISTON (0.75) (OPTIONAL)	2	
1◇	13013ZJ1841	RING SET, PISTON (0.75) (OPTIONAL) .....	2	FROM S/N 107752
1◇	13013Z5H004	RING SET, PISTON (0.75) (OPTIONAL) .....	1	UP TO S/N 1026786
2◆	13101ZJ1840	PISTON (STD)	2	
2◆	13102ZJ1840	PISTON (0.25)	2	
2◇	13102ZJ1840	PISTON (0.25) .....	2	UP TO S/N 1077252
2◇	13102ZJ1841	PISTON (0.25) .....	2	FROM S/N 1077253
2◆	13103ZJ1840	PISTON (0.50)	2	
2◇	13103ZJ1841	PISTON (0.50) .....	2	USE UP TO S/N 1026786
2◇	13103ZJ1840	PISTON (0.50) .....	2	USE FROM S/N 1077252
2◆	13104ZJ1840	PISTON (0.75)	2	
2◇	13104ZJ1841	PISTON (0.75)	2	
2◇	13104ZJ1840	PISTON (0.75) .....	2	USE FROM S/N 1077252
3	13111ZJ1840	PIN, PISTON	1	
4	13200ZJ1841	ROD ASSY., CONNECTING (STD) .....	1	INCLUDES ITEMS W/\$
5\$	90001ZN1000	BOLT, CONNECTING ROD, 6X37	4	
6◆	9460118000	CLIP, PISTON PIN (18MM)	4	
6◇	90551ZE1000	CLIP, PISTON PIN (18MM)	4	



◆GX610K1VD: Model GA9.7HE DEC. 2003 AND BELOW

◇GX610U1VD: Model GA9.7HE APRIL 2008 AND ABOVE

# HONDA GX610K1VD/U1VD ENGINE — RECOIL STARTER ASSY.



# HONDA GX610K1VD/U1VD ENGINE — RECOIL STARTER ASSY.

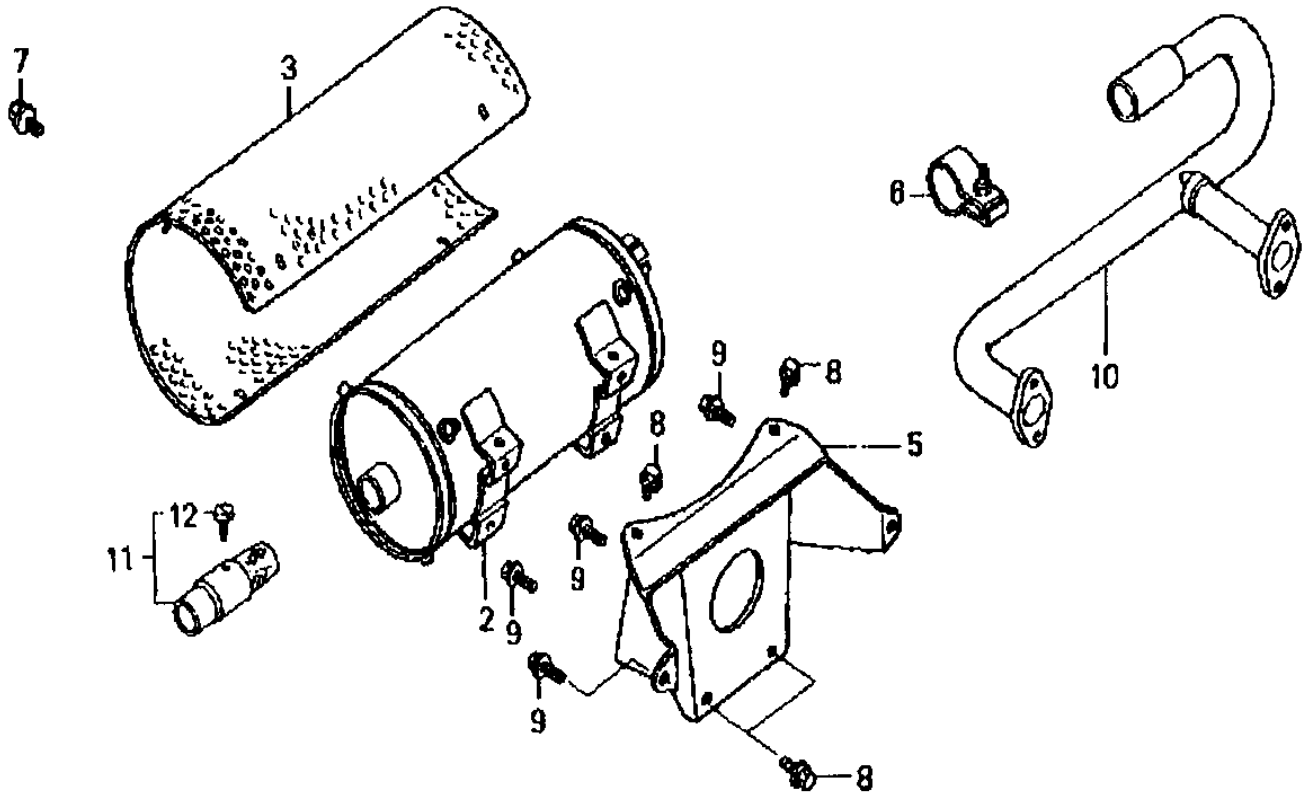
NO.	PART NO.	PART NAME	QTY.	REMARKS
1◆	28400ZE3W01ZA	STARTER ASSY., RECOIL *R8* (RED).....	1.....	INCLUDES ITEMS W/\$
1◇	28400ZE3W01ZP	STARTER ASSY., RECOIL *R280* (RED).....	1.....	INCLUDES ITEMS W/\$
2\$◆	28410ZE3W01ZA	CASE, RECOIL STARTER *R8* (RED)	1	
2\$◇	28410ZE3W01ZP	CASE, RECOIL STARTER *R280* (RED)	1	
3\$	28421ZE3W01	PULLEY, RECOIL STARTER	1	
4\$	28422ZE2W01	RATCHET, STARTER	2	
5\$	28441ZE2W01	SPRING, FRICTION	1	
6\$	28442ZE2W01	SPRING, STARTER RETURN	1	
7\$	28443ZE2W01	SPRING, RATCHET	2	
8\$	28444ZE2W01	RETAINER, SPRING	1	
9\$	28445ZE2W01	HOLDER, SPRING	1	
10\$	28461ZE2W01	GRIP, STARTER	1	
11\$	28462ZE3W01	ROPE, RECOIL STARTER	1	
13\$	90004ZE2W01	SCREW, CENTER	1	
14	9405006070	NUT, FLANGE (6X10)	3	



◆GX610K1VD: Model GAC9.7HZ JULY. 2007 AND BELOW

◇ GX610U1VD: Model GAC9.7HZ FEB. 2008 AND ABOVE

# HONDA GX610K1VD/U1VD ENGINE — MUFFLER ASSY.

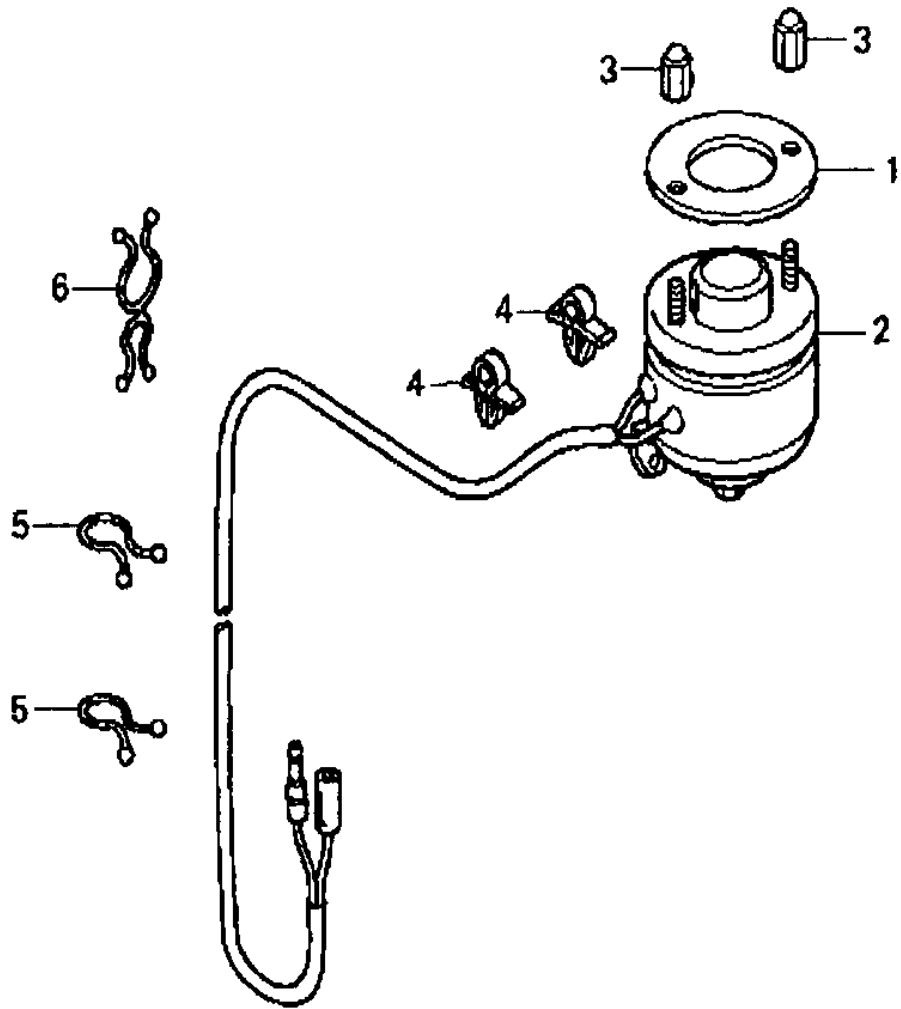


## HONDA GX610K1VD/U1VD ENGINE — MUFFLER ASSY.

---

<u>NO.</u>	<u>PART NO.</u>	<u>PART NAME</u>	<u>QTY.</u>	<u>REMARKS</u>
2	18310ZJ1013	MUFFLER COMP.	1	
3	18321ZJ1003	PROTECTOR,MUFFLER	1	
5	18338ZJ1841	STAY, MUFFLER	1	
6	18396ZJ1003	BAND ASSY.	1	
7	957010600800	BOLT, FLANGE (6X8)	6	
8	957010801400	BOLT, FLANGE (8X14)	4	
9	957010802000	BOLT, FLANGE (8X20)	4	
10	18330ZJ1841	PIPE COMP., EX (HIGH-R)	1	
11	18355ZJ1003	ARRESTER, SPARK	1	
12	90009ZJ1801	SCREW	1	

# HONDA GX610K1VD/U1VD ENGINE — AUTO THROTTLE ASSY.



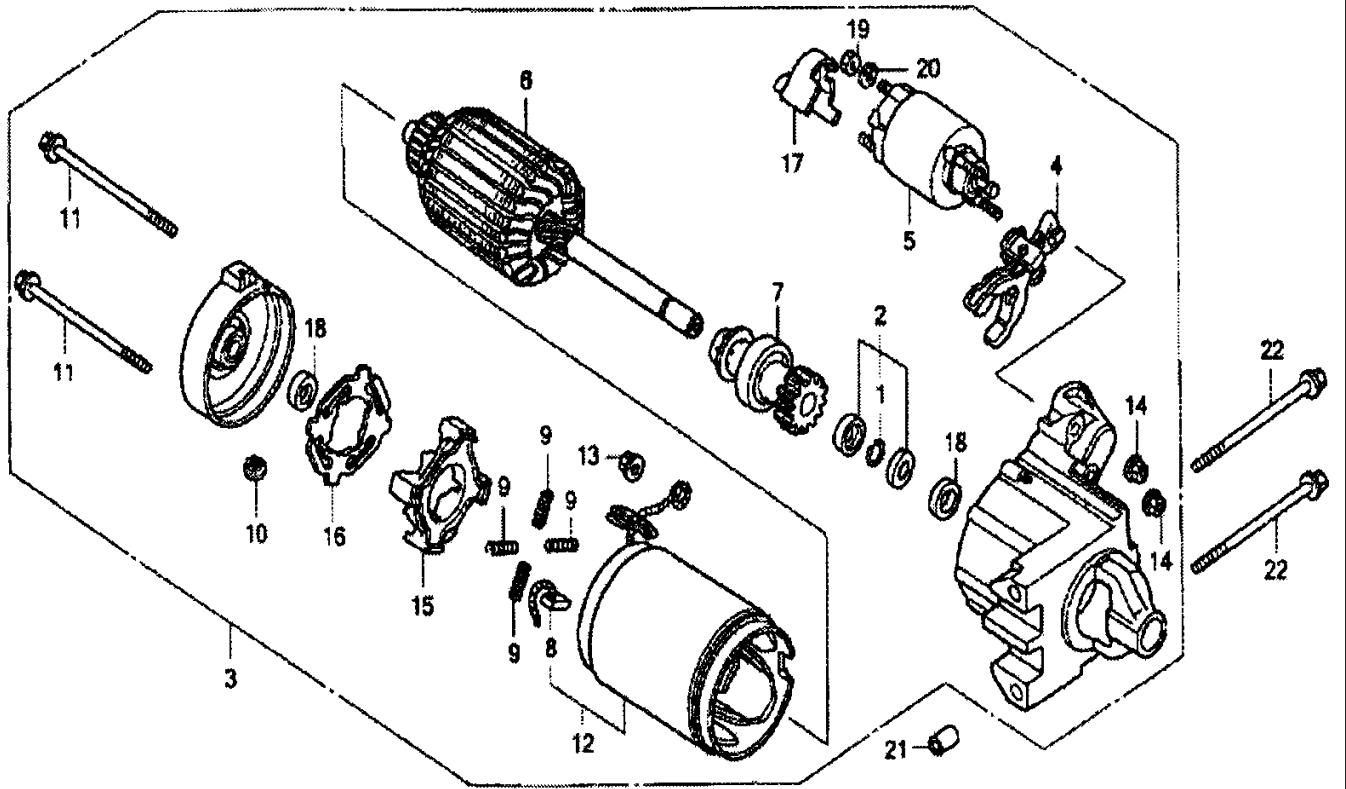


## **HONDA GX610K1VD/U1VD ENGINE — AUTO THROTTLE ASSY.**

---

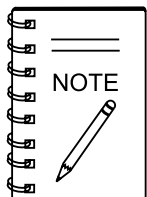
<u>NO.</u>	<u>PART NO.</u>	<u>PART NAME</u>	<u>QTY.</u>	<u>REMARKS</u>
1	36337ZJ1840	PLATE SOLENOID	1	
2	36350ZJ1841	SOLENOID ASSY., ROTARY	1	
3	90202ZJ1840	NUT, SPECIAL CAP	2	
4	90654SA4003	CLIP, WIRE HARNESS, 6MM, WHITE	2	
5	90686459711	PURSE, LOCK, 8MM	2	
6	91402ZJ1841	CLIP, PURSE LOCK	1	

# HONDA GX610K1VD/U1VD ENGINE — STARTER MOTOR ASSY.



# HONDA GX610K1VD/U1VD ENGINE — STARTER MOTOR ASSY.

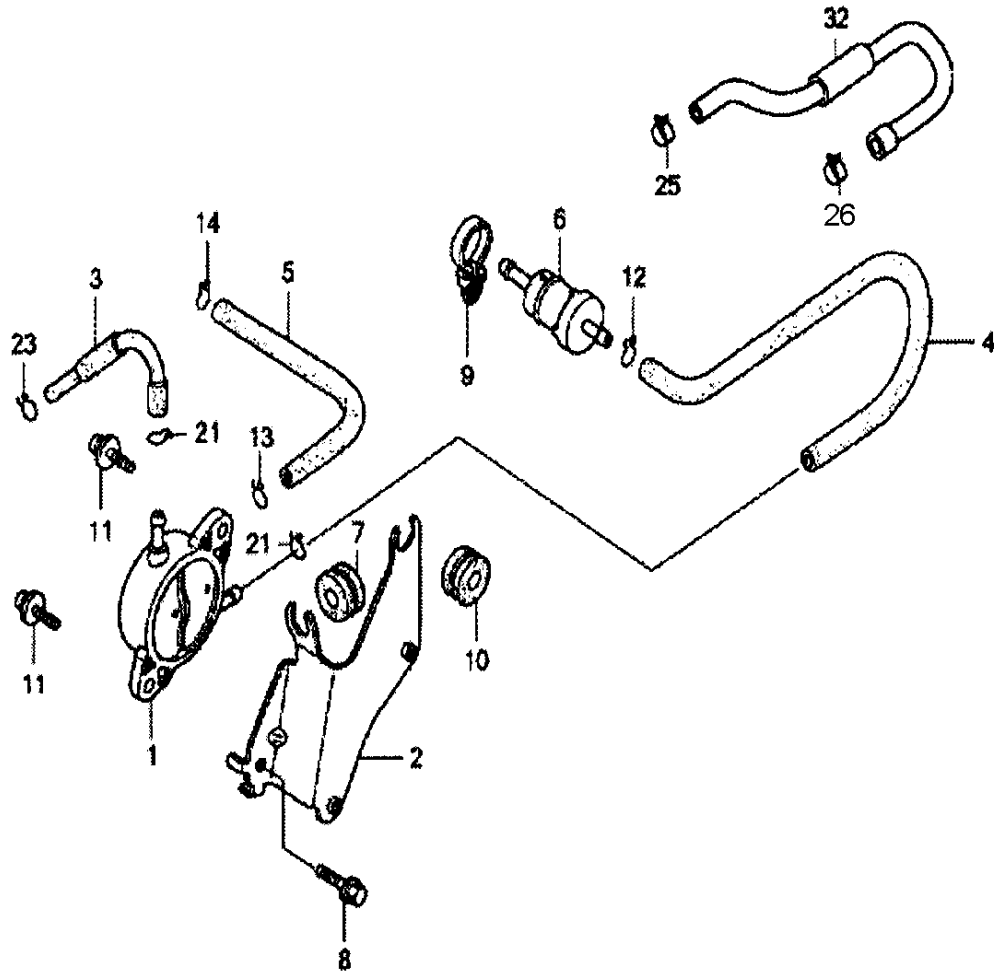
NO.	PART NO.	PART NAME	QTY.	REMARKS
1#	30201PH9004	RING, SNAP	1	
2#	30202PZ1003	COLLAR SET, CLUTCH STOP	1	INCLUDES ITEM W/\$
3◆	31200ZJ1841	MOTOR ASSY., STARTER	1	INCLUDES ITEMS W/#
3◇	31200ZJ1842	MOTOR ASSY., STARTER	1	UP TO S/N 1022942
				INCLUDES ITEMS W/#
3◇	31200ZJ1841	MOTOR ASSY., STARTER	1	FROM S/N 1064272
				INCLUDES ITEMS W/#
4#	31203PH904	LEVER, PINION DRIVE	1	
5◆#	31204ZJ1H01	SWITCH ASSY., MAGNET	1	
5◇#	31204ZJ1H01	SWITCH ASSY., MAGNET	1	UP TO S/N 1064272
5◇#	31204ZJ1H02	SWITCH ASSY., MAGNET	1	FROM S/N 1064273
6#	31206ZG4801	ARMATURE COMP.	1	
7#	31207ZJ1H01	CLUTCH., OVERRUNNING	1	
8#%	31211PH9004	BRUSH	4	
9#	31212PH9004	SPRING, BRUSH	4	
10#	31213P64N01	COVER	1	
11#	31214PH9004	BOLT	2	
12#	31218P64N01	YOKE COMP.	1	INCLUDES ITEM W/%
13#	31220PH9004	NUT, HEX 8 MM	1	
14#	31223PA0006	NUT, HEX	2	
15#	31231PH9004	HOLDER, BRUSH	1	
16#	31233PH9004	INSULATOR, BRUSH HOLDER	1	
17◆#	31234ZJ1H01	COVER, TERMINAL	1	
17◇#	31234ZJ1H01	COVER, TERMINAL	1	UP TO S/N 1064272
17◇#	31234ZJ1H02	COVER, TERMINAL	1	FROM S/N 1064273
18#	91002ZG4801	BEARING A	1	
19#	94001082000S	NUT, HEX 8 MM	1	
20#	9411108000	WASHER, SPRING, 8 MM	1	
21	9430110120	DOWEL PIN, 10X12	2	
22	957010811000	BOLT, FLANFE 8X110	1	



◆GX610K1VD: Model GA9.7HE DEC. 2003 AND BELOW

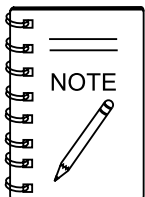
◇GX610U1VD: Model GA9.7HE APRIL 2008 AND ABOVE

# HONDA GX610K1VD/U1VD ENGINE — FUEL PUMP ASSY.



# HONDA GX610K1VD/U1VD ENGINE — FUEL PUMP ASSY.

NO.	PART NO.	PART NAME	QTY.	REMARKS
1◆	16700ZJ8003	PUMP ASSY., FUEL .....	1.....	USE UP TO S/N 2022976
1◆	16700ZJ8013	PUMP ASSY., FUEL .....	1.....	USE FROM S/N 2022977
1◇	16700ZJ8013	PUMP ASSY., FUEL	1	
2	16711ZJ1840	STAY, FUEL PUMP	1	
3◆	16850ZJ1840	TUBE COMP., FUEL (A)	1	
3◇	16850Z6C841	TUBE COMP., FUEL (A) .....	1.....	USE UP TO S/N 1013142
3◇	16850Z6C841	TUBE COMP., FUEL (A) .....	1.....	USE S/N's 1013143~1089491
3◇	16850Z6C842	TUBE COMP., FUEL (A) .....	1.....	USE FROM S/N 1089492
4◆	16852ZJ1840	TUBE B, FUEL	1	
4◇	16852ZJ1840	TUBE B, FUEL.....	1.....	USE UP TO S/N 1013142
4◇	16852ZJ1841	TUBE B, FUEL.....	1.....	USE FROM S/N 1072338
5	16882ZJ1840	TUBE, DIAPHRAGM	1	
6	16910ZE8015	STRAINER COMP., FUEL	1	
7	19111MF5000	GROMMET, RESERVE TANK	1	
8	90014952000	BOLT, FLANGE (6X14)	1	
9	90617SA0003	CLIP, WIRE HARNESS	1	
10	91601ZJ1840	GROMMET, PUMP STAY	1	
11	938940601600	SCREW-WASHER, 6X16	2	
12	9500202080	CLIP, TUBE (B8)	1	
13	9500202100	CLIP, TUBE (B10)	1	
14	9500250000	CLIP, TUBE (C9)	1	
21	9500202100	CLIP, TUBE (B10)	1	
23	9500202080	CLIP, TUBE (B8)	1	
25◇	950024080008	CLAMP, TUBE (D8).....	2.....	USE UP TO S/N 1002961
26◇	950024085008	CLAMP, TUBE (D8.5).....	2.....	USE FROM S/N 1002962
32◇	16855Z6C841	TUBE COMP. B, FUEL.....	1.....	USE S/N's 1072339~1089491
32◇	16855Z6C842	TUBE COMP. B, FUEL.....	1.....	USE FROM S/N 1089492

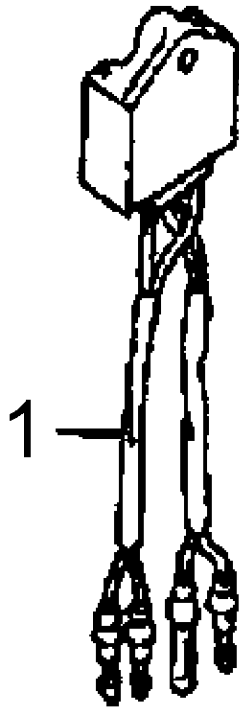


◆GX610K1VD: Model GA9.7HE DEC. 2003 AND BELOW

◇GX610U1VD: Model GA9.7HE APRIL 2008 AND ABOVE

# HONDA GX610K1VD/U1VD ENGINE — RECTIFIER ASSY.

---

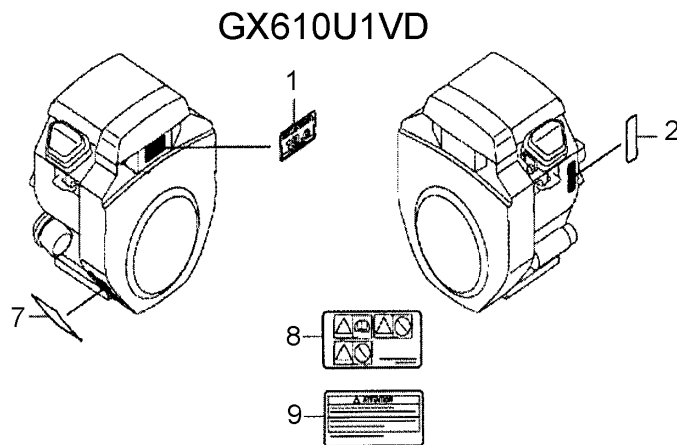
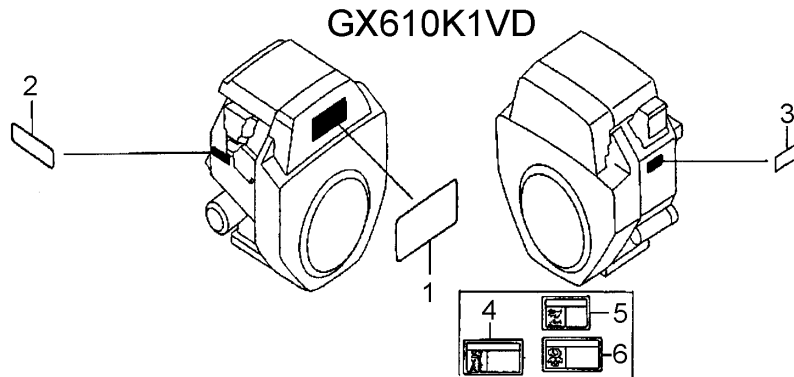


# HONDA GX610K1VD/U1VD ENGINE — RECTIFIER ASSY.

---

<u>NO.</u>	<u>PART NO.</u>	<u>PART NAME</u>	<u>QTY.</u>	<u>REMARKS</u>
1#	31620881A02	RECTIFIER ASSY., REGULATOR	1	

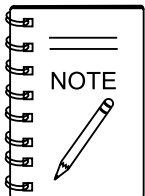
# HONDA GX610K1VD/U1VD— ENGINE DECALS ASSY.





## HONDA GX610K1VD/U1VD— ENGINE DECALS ASSY.

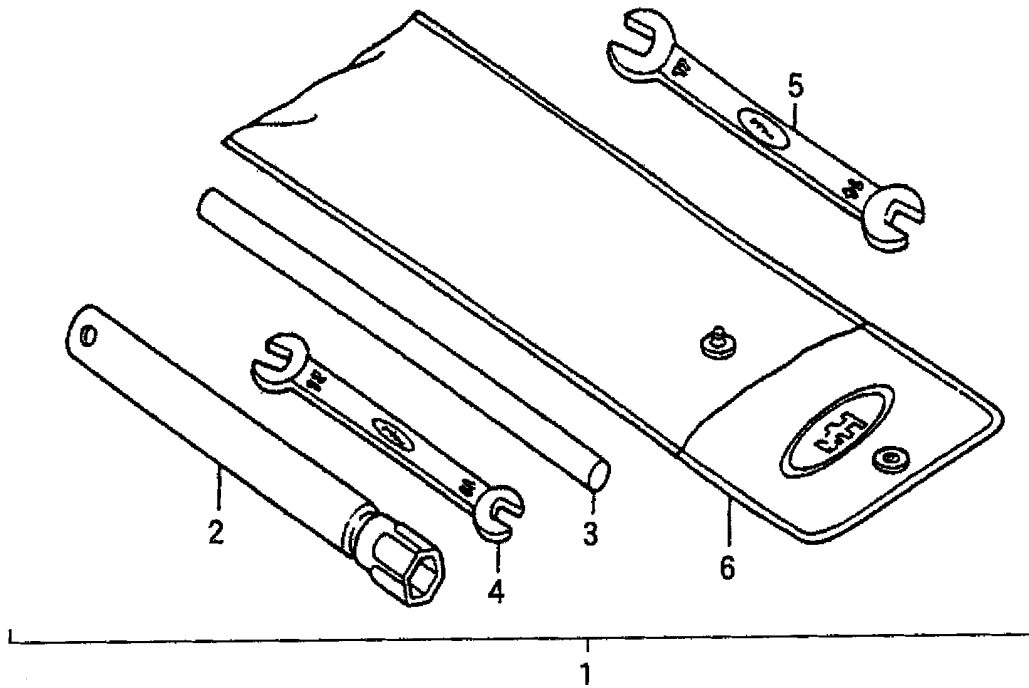
NO.	PART NO.	PART NAME	QTY.	REMARKS
1◆	87101ZJ0830	EMBLEM (18.0) .....	1.....	USE UP TO S/N 2021866
1◆	87101ZJ0831	EMBLEM (18.0) .....	1.....	USE FROM S/N 2021867
1◇	87101ZJ0831	EMBLEM (18.0) .....	1.....	USE UP TO S/N 1020628
1◇	87101ZJ0832	EMBLEM (6X610)	1	
2◆	87152ZJ0000	LABEL SPECIFICATION.....	1.....	USE UP TO S/N 2017952
2◆	87152ZJ0010	LABEL SPECIFICATION (GX610).....	1.....	USE UP TO S/N 2017953
2◇	87152ZJ0010	LABEL SPECIFICATION (GX610)	1	
3◆	87532ZH8810	MARK, OIL ALERT, EXTERNAL	1	
4◆	87106737J00	MARK, FUEL WARNING	1	
5◆	87539737J00	MARK, HEAT CAUTION	1	
6◆	87561733J00	MARK EXHAUST WARNING	1	
7◇	87516ZH7000	MARK OPERATOR CAUTION (ENGLISH).....	1.....	USE UP TO S/N 1036507
7◇	87516ZH7010	MARK OPERATOR CAUTION (ENGLISH).....	1.....	USE FROM S/N 1036508
7◇	87516ZH7810	MARK OPERATOR CAUTION (PICTOGRAPH) 1		
8◇	87516ZH7801	MARK OPERATOR CAUTION (FRENCH).....	1.....	USE UP TO S/N 1111458
9◇	87519ZH7000	MARK OPERATOR CAUTION (PICTOGRAPH) 1.....	1.....	USE UP TO S/N 1111458



- ◆GX610K1VD: Model GA9.7HE DEC. 2003 AND BELOW
- ◇GX610U1VD: Model GA9.7HE APRIL 2008 AND ABOVE

# HONDA GX610K1VD/U1VD ENGINE — TOOL KIT

---



## HONDA GX610K1VD/U1VD ENGINE — TOOL KIT

---

<u>NO.</u>	<u>PART NO.</u>	<u>PART NAME</u>	<u>QTY.</u>	<u>REMARKS</u>
1	89000ZE1000	TOOL KIT.....	1.....	INCLUDES ITEMS W/#
2#	89218ZE1000	WRENCH COMP. (SPARK PLUG)	1	
3#	89219805000	HANDLE, BOX WRENCH	1	
4#	9900110120	SAPNNER, 10X12	1	
5#	9900114170	SAPNNER, 14X17	1	
6#	9900802300	BAG TOOL	1	