

OPERATION AND PARTS MANUAL



MODEL GA-6HE/GA-6HEA **Portable Generators** **(HONDA GASOLINE ENGINE)**

Revision #1 (09/30/05)

**THIS MANUAL MUST ACCOMPANY
THE EQUIPMENT AT ALL TIMES.**

Multiquip GA-6HE/GA-6HEA AC Portable Generators

Here's How To Get Help	3
Table Of Contents	4
Parts Ordering Procedures	5
Safety Message Alert Symbols	6-7
Rules for Safe Operation	8-10
Operation and Safety Decals	11
Specifications (Generator)	12
Specifications (Engine)	13
Dimensions	14
General Information	15
Load Application	16
Controls and Indicators	17-19
Generator Refueling	20
Installation	21-22
Pre-Inspection	23
Pre-Inspection (Engine)	24
Initial Start-up (Engine)	25-26
Initial Start-up/Generator Operation	26
Generator Operation/Shutdown	27
Preparation For Long Term Storage	28
Maintenance (Engine)	29-30
Maintenance (Battery)	31
Wiring Diagram (GA-6HE Generator)	32
Wiring Diagram (GA-6HEA Generator)	33
Troubleshooting (Engine)	34-35
Troubleshooting (Generator)	36
Explanation of Code In Remarks Column	38
Suggested Spare Parts	39

HONDA GX340K1EDE2 ENGINE

Air Cleaner Assembly	54-55
Camshaft Assembly	56-57
Carburetor Assembly	58-59
Control Assembly	60-61
Crankcase Cover Assembly	62-63
Crankshaft Assembly	64-65
Cylinder Barrel Assembly	66-67
Cylinder Head Assembly	68-69
Fan Cover Assembly	70-71
Flywheel Assembly	72-73
Ignition Coil Assembly	74-75
Piston Assembly	76-77
Recoil Starter Assembly	78-79
Starter Motor Assembly	80-81
Label Assembly	82-83

Terms and Conditions Of Sale — Parts 84.

Component Drawings

Nameplate and Decals	40-41
Generator Assembly	42-43
Control Box Assembly (GA-6HE)	44-45
Control Box Assembly (GA-6HEA)	46-47
Muffler Assembly	48-49
Pipe Frame Assembly	50-51
Battery Assembly	52-53

GA-6HE/GA-6HEA — OPERATION AND SAFETY DECALS

Machine Safety Decals

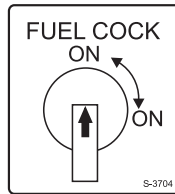
The GA-6HE/GA-6HEA portable generators are equipped with a number of safety decals (Figure 1). These decals are provided for operator safety and maintenance information. The illustration below shows these decals as they appear on the machine. Should any of these decals become unreadable, replacements can be obtained from your dealer.

MQ MULTIQUIP 6000

P/N A556100003



P/N 8700611804



P/N 1980680004



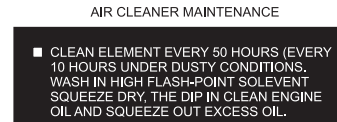
CONTACT
MQ PARTS DEPT.



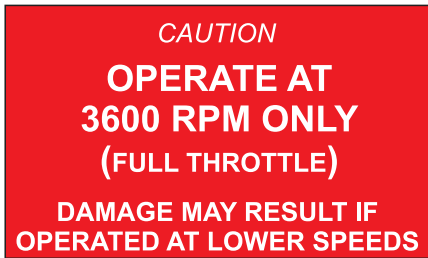
P/N 8700611904



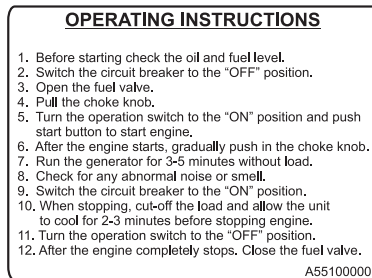
P/N 0800628504



P/N 060050045



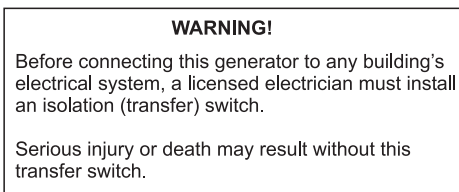
P/N 7900636004



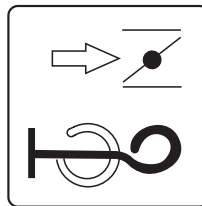
P/N A551000004



P/N 35137



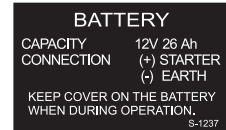
P/N 0820610404



P/N 0600500047



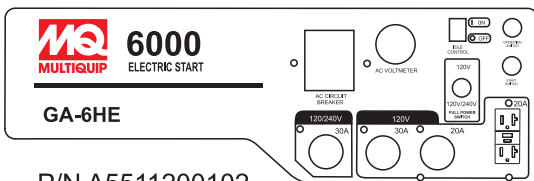
P/N 0800689404



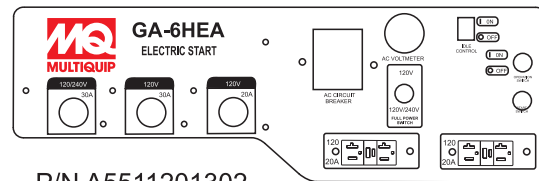
P/N 0800696804



P/N 0800689504



P/N A5511200102



P/N A5511201302

Figure 1. Operation and Safety Decals

GA-6HE/GA-6HEA — SUGGESTED SPARE PARTS

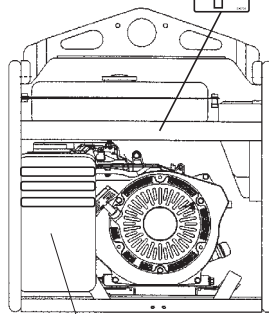
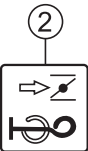
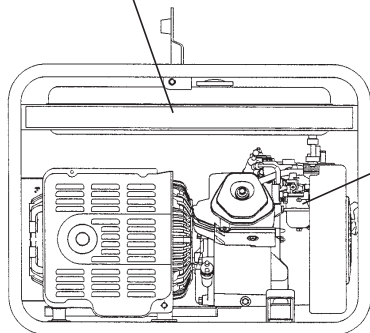
GA-6HE/GA-6HEA 1 TO 3 UNITS WITH HONDA GX340K1E2 ENGINE

1 to 3 Units

<u>Qty.</u>	<u>P/N</u>	<u>Description</u>
1	A9924800014	CAP FUEL TANK
1	A9924800004	FILTER FUEL
2	3015419604	RUBBER SUSPENSION
2	1665419004	RUBBER SUSPENSION
3	9807955855	SPARK PLUG
2	28462ZV7003	ROPE, RECOIL
3	17211899000	ELEMENT AIR CLEANER
1	16952ZB4005	SCREEN SET, FUEL STRAINER
3	0601802137	FUSE, 10 AMP

GA-6HE/GA-6HEA — NAMEPLATE AND DECALS.

MULTIQUIP 6000 ①

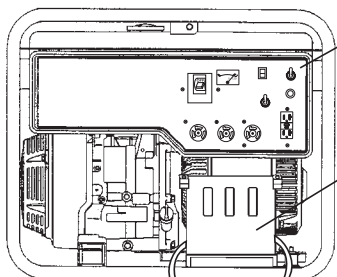


AIR CLEANER MAINTENANCE
 • CLEAN ELEMENT EVERY 50 HOURS (EVERY 10 HOURS UNDER DUSTY CONDITIONS).
 WASH IN HIGH FLASH-POINT SOLVENT.
 SQUEEZE DRY. THE RIP IN CLEAN ENGINE OIL AND SQUEEZE OUT EXCESS OIL.

⑤

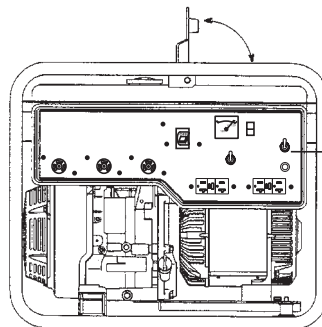


④



BATTERY
 CAPACITY 12V 26 Ah
 CONNECTION (+) STARTER (-) EARTH
 KEEP COVER ON THE BATTERY WHEN DURING OPERATION. S-1122

⑬



④



MODEL SERIAL NO.

⑥



⑬



⑫

CAUTION OPERATE AT 3600 RPM ONLY (FULL THROTTLE)
 DAMAGE MAY RESULT IF OPERATED AT LOWER SPEEDS.

⑪



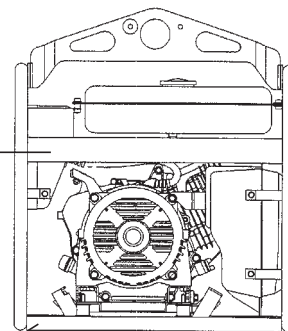
⑩

WARNING!
 Before connecting this generator to any building's electrical system, a licensed electrician must install an isolation (transfer) switch.
 Serious injury or death may result without this transfer switch.

⑨



⑦



OPERATING INSTRUCTIONS

1. Before starting check the oil and fuel level.
2. Switch the circuit breaker to the "OFF" position.
3. Open the fuel valve.
4. Pull the choke knob.
5. Turn the operation switch to the "ON" position and push start button to start engine.
6. After the engine starts, gradually push in the choke knob.
7. Run the generator for 3-5 minutes without load.
8. Check for any abnormal noise or smell.
9. Switch the circuit breaker to the "ON" position.
10. When stopping, cut off the load and allow the unit to cool for 3-5 minutes before stopping engine.
11. Turn the operation switch to the "OFF" position.
12. After the engine completely stops, close the fuel valve.

A55100000

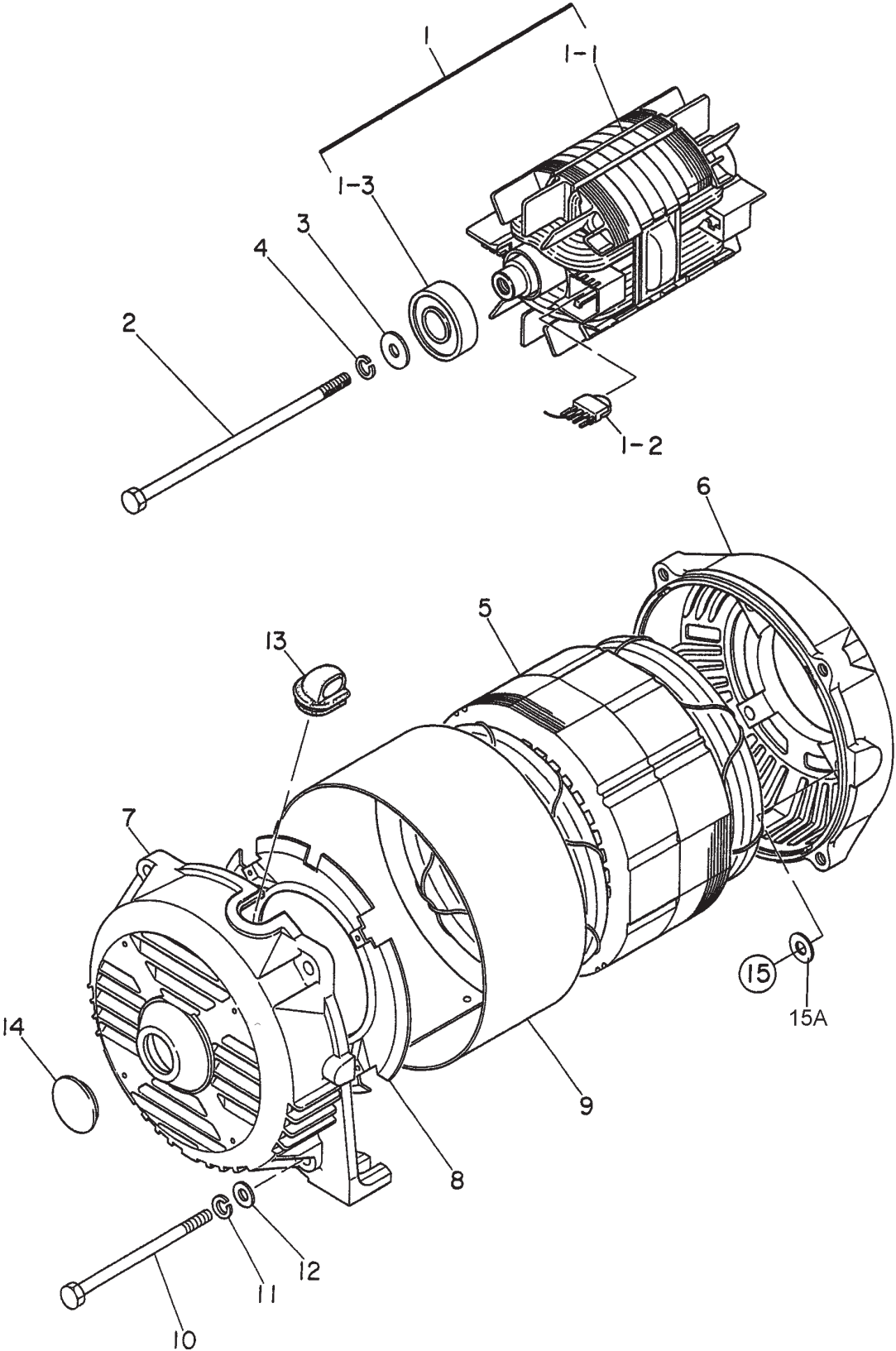
GA-6HE/GA-6HEA — NAMEPLATE AND DECALS.

NAME PLATE ASSY.

<u>NO.</u>	<u>PART NO.</u>	<u>PART NAME</u>	<u>QTY.</u>	<u>REMARKS</u>
1	A5561000003	DECAL; MQ MULTIQUIP 6000	1	
2	87528898620	DECAL; CHOKE	1	REPLACES P/N 0600500047
3	1980680004	DECAL; FUEL COCK	1	S-3704
4	A5511200102	DECAL; CONTROL PANEL	1	GA-6HE, A51120010
4	A5511201302	DECAL; CONTROL PANEL	1	GA-6HEA, A51120130
5	87533ZC0630	DECAL; AIR CLEANER	1	REPLACES P/N 0600500045
6		NAMEPLATE	1	CONTACT MQ PARTS DEPT.
7	0800628504	DECAL; GROUND	1	S-1123
8	A5551000004	DECAL; OPERATING INSTRUCTIONS	1	A55100000
9	0820610404	DECAL; WARNING	1	S-3627
10	35137	DECAL; WARNING	1	
11	7900636004	DECAL; CAUTION OPER. AT 3600 RPM ONLY	1	S-4461
12	8700611804	DECAL; WARNING DANGEROUS GAS	1	S-4984
13	8700611904	DECAL; DANGER ELECTRICAL SHOCK HAZ.	1	S-4985
14	0800689404	DECAL; POSITIVE (+)	1	S-2090
15	0800689504	DECAL; NEGATIVE (-)	1	S-2091
16	0800696604	DECAL; BATTERY	1	S-1237

GA-6HE/GA-6HEA — GENERATOR ASSY.

GENERATOR ASSY.



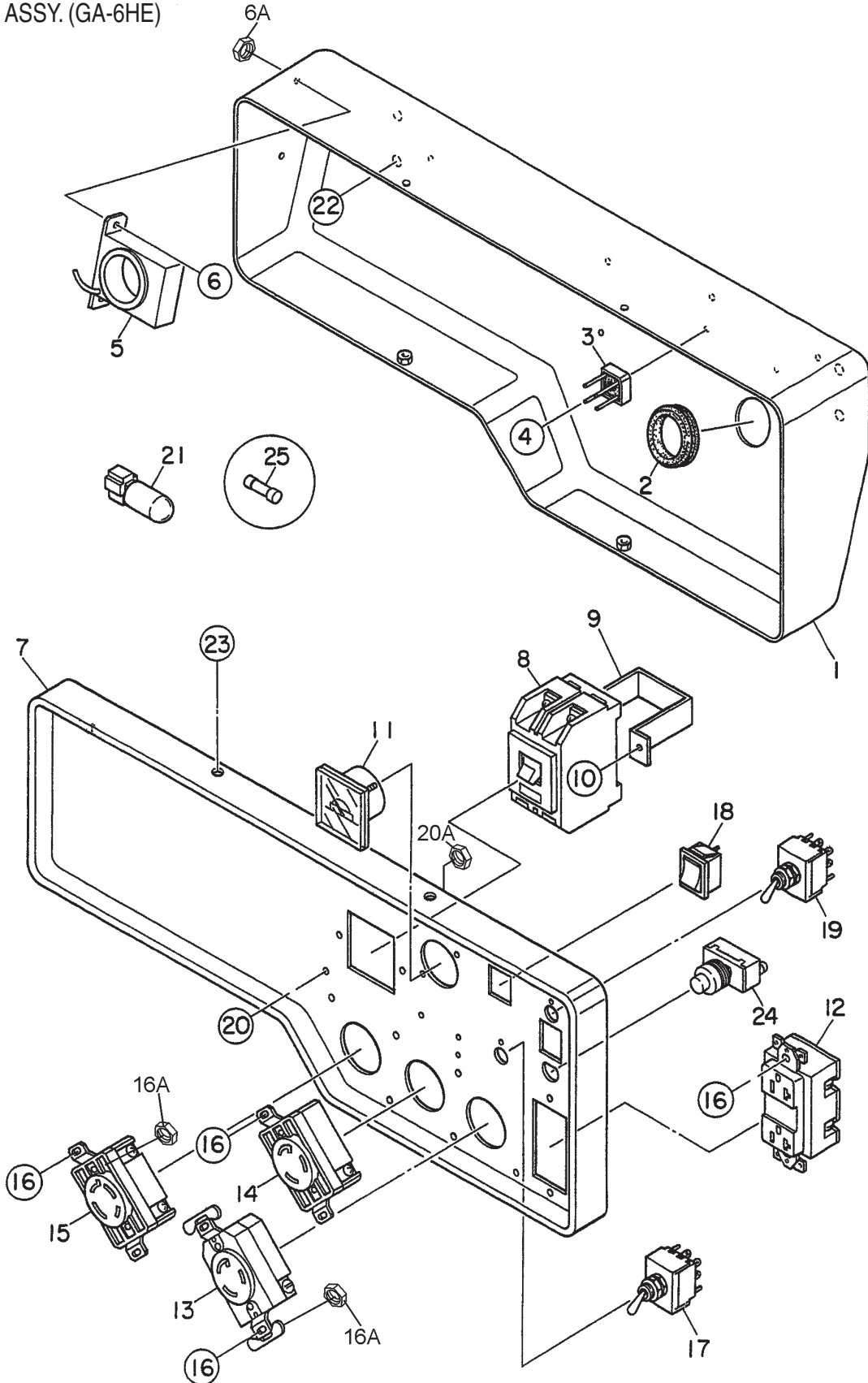
GA-6HE/GA-6HEA — GENERATOR ASSY.

GENERATOR ASSY.

<u>NO.</u>	<u>PART NO.</u>	<u>PART NAME</u>	<u>QTY.</u>	<u>REMARKS</u>
1	7901002403	ROTOR ASSY.	1	INCLUDES ITEMS W/*
1-1*		FIELD ASSY.	1	NOT SOLD SEPERATELY
1-2*	0601823213	RECTIFIER, D3SB80	2	
	0601822638	SURGE ABSORBER,	2	TNR15G431K
1-3*	0071706304	BEARING, 6304 2RU NYCM	1	
2	7901017004	SET BOLT, ROTOR	1	
3	0801086104	SET WASHER, BEARING	1	
4	0040010000	SPRING WASHER	1	
5	A5135000003	ARMATURE ASSY.	1	
6	7901315502	END BRACKET	1	
7	7871315022	END BRACKET	1	
8	7875021523	GUIDE PANEL, AIR	1	
9	7871331003	COVER	1	
10	7901316004	SET BOLT, STATOR	4	
11	0040008000	SPRING WASHER	4	
12	0041208000	PLAIN WASHER	4	
13	7871329514	GROMMET	1	
14	0601851760	CAP, 0B-13	1	
15	0013608020	HEX, HEAD BOLT	4	
15A	0040008000	SPRING WASHER	4	

GA-6HE — CONTROL BOX ASSY.

CONTROL BOX ASSY. (GA-6HE)



GA-6HE — CONTROL BOX ASSY.

CONTROL BOX ASSY. (GA-6HE)

<u>NO.</u>	<u>PART NO.</u>	<u>PART NAME</u>	<u>QTY.</u>	<u>REMARKS</u>
1	A3214000003	CONTROL BOX	1	
2	0601850102	GROMMET, G-3	1	
3	0601823204	RECTIFIER, S5VB60	2	
4	0027103012	MACHINE SCREW	2	
5	0601823853	SLOW DOWN UNIT, ND-80	1	
6	0027104010	MACHINE SCREW	2	
6A	0207004000	HEX, NUT	2	
7	A3224000003	CONTROL PANEL	1	
8	0601804819	CIRCUIT BREAKER, KM-2 21A	1	
9	4341817004	BRACKET, CIRCUIT BREAKER	1	
10	0021004010	MACHINE SCREW	2	
11	0601806819	AC VOLTMETER, DE450-011 0~120/240V	1	
12	0601812598	RECEPTACLE, 5-20R	1	
13	0601812592	RECEPTACLE, L5-20R	1	
14	0601811035	RECEPTACLE, LS-30R	1	
15	0601812529	RECEPTACLE, L14-30R	1	
16	0021004010	MACHINE SCREW	8	
16A	0207004000	HEX, NUT	8	
17	0601830737	FULL POWER SWITCH, ET-330D12	1	
18	0601831620	IDLE CONTROL SWITCH, C1550WA	1	
19	0601830737	OPERATION SWITCH, ET-330D12	1	
20	0021004015	MACHINE SCREW	1	
20A	0207004000	HEX, NUT	1	
21	A3262800004	CAPACITOR ASSY., VR1H102MHA, 50V 1000 μ F	1	
22	0017106016	HEX, HEAD BOLT	4	
23	0017105010	HEX, HEAD BOLT	4	
24	0602100102	START SWITCH, ST-403	1	
25	0601802137	FUSE, 10A	1	

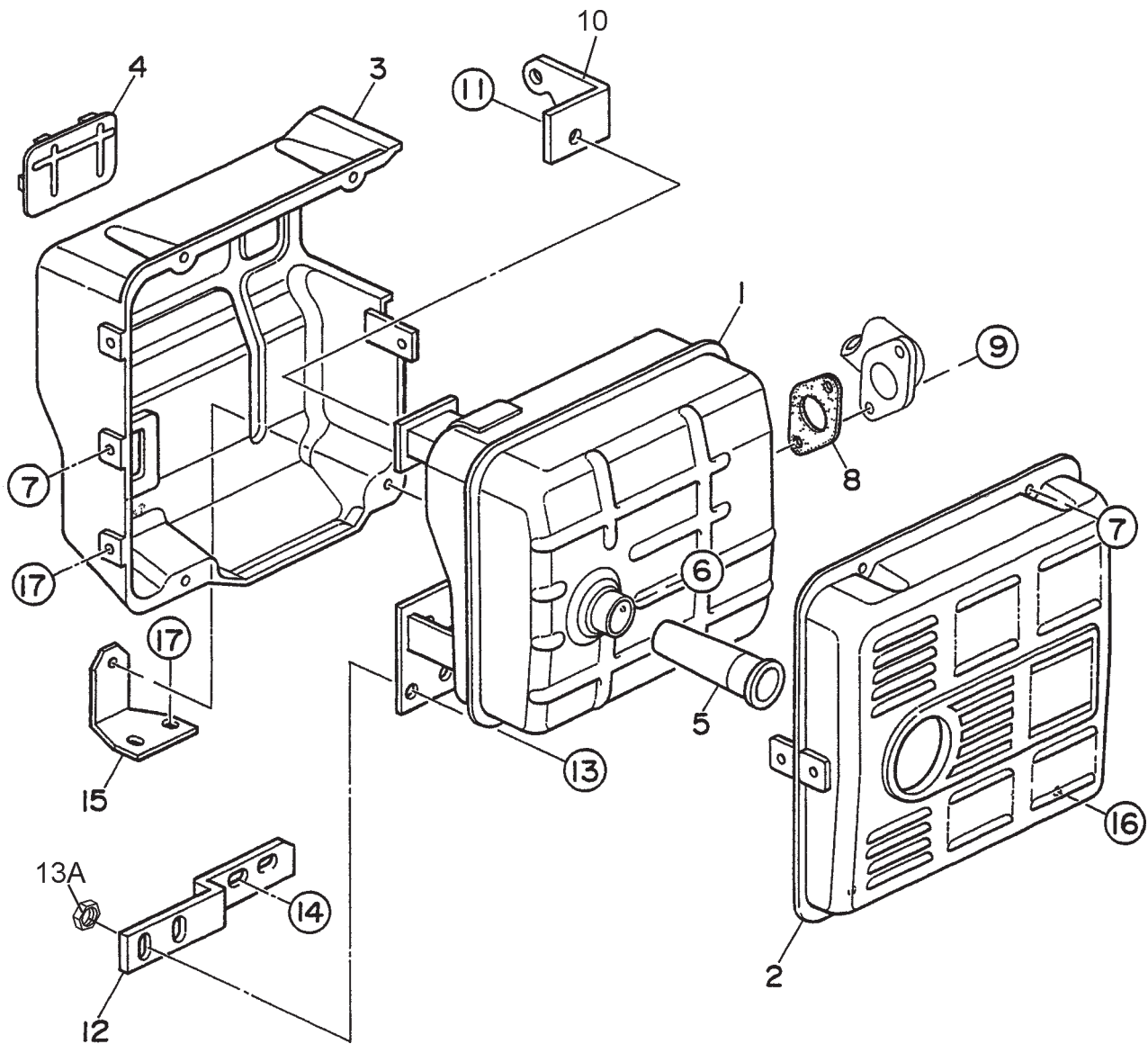
GA-6HEA — CONTROL BOX ASSY.

CONTROL BOX ASSY. (GA-6HEA)

<u>NO.</u>	<u>PART NO.</u>	<u>PART NAME</u>	<u>QTY.</u>	<u>REMARKS</u>
1	A3214000103	CONTROL BOX	1	
2	0601850102	GROMMET, G-3	1	
3	0601823204	RECTIFIER, S5VB60	2	
4	0027103012	MACHINE SCREW	2	
5	0601823853	SLOW DOWN UNIT, ND-80	1	
6	0027104010	MACHINE SCREW	2	
6A	0207004000	HEX, NUT	2	
7	A3224000103	CONTROL PANEL	1	
8	0601804819	CIRCUIT BREAKER, KM-2 21A	1	
9	4341817004	BRACKET, CIRCUIT BREAKER	1	
10	0021004010	MACHINE SCREW	2	
11	0601806819	AC VOLTMETER, DE450-011 0~120/240V	1	
12	0601812598	RECEPTACLE, 5-20R	2	
13	0601812592	RECEPTACLE, L5-20R	1	
14	0601811035	RECEPTACLE, LS-30R	1	
15	0601812529	RECEPTACLE, L14-30R	1	
16	0021004010	MACHINE SCREW	8	
16A	0207004000	HEX, NUT	8	
17	0601830737	FULL POWER SWITCH, ET-330D12	1	
18	0601831620	IDLE CONTROL SWITCH, C1550WA	1	
19	0601830737	OPERATION SWITCH, ET-330D12	1	
20	0021004015	MACHINE SCREW	1	
20A	0207004000	HEX, NUT	1	
21	A3262800004	CAPACITOR ASSY., VR1H102MHA, 50V 1000 μ F	1	
22	0017106016	HEX, HEAD BOLT	4	
23	0017105010	HEX, HEAD BOLT	4	
24	0602100102	START SWITCH, ST-403	1	
25	0601802137	FUSE, 10A	1	

GA-6HE/GA-6HEA — MUFFLER ASSY.

MUFFLER ASSY.



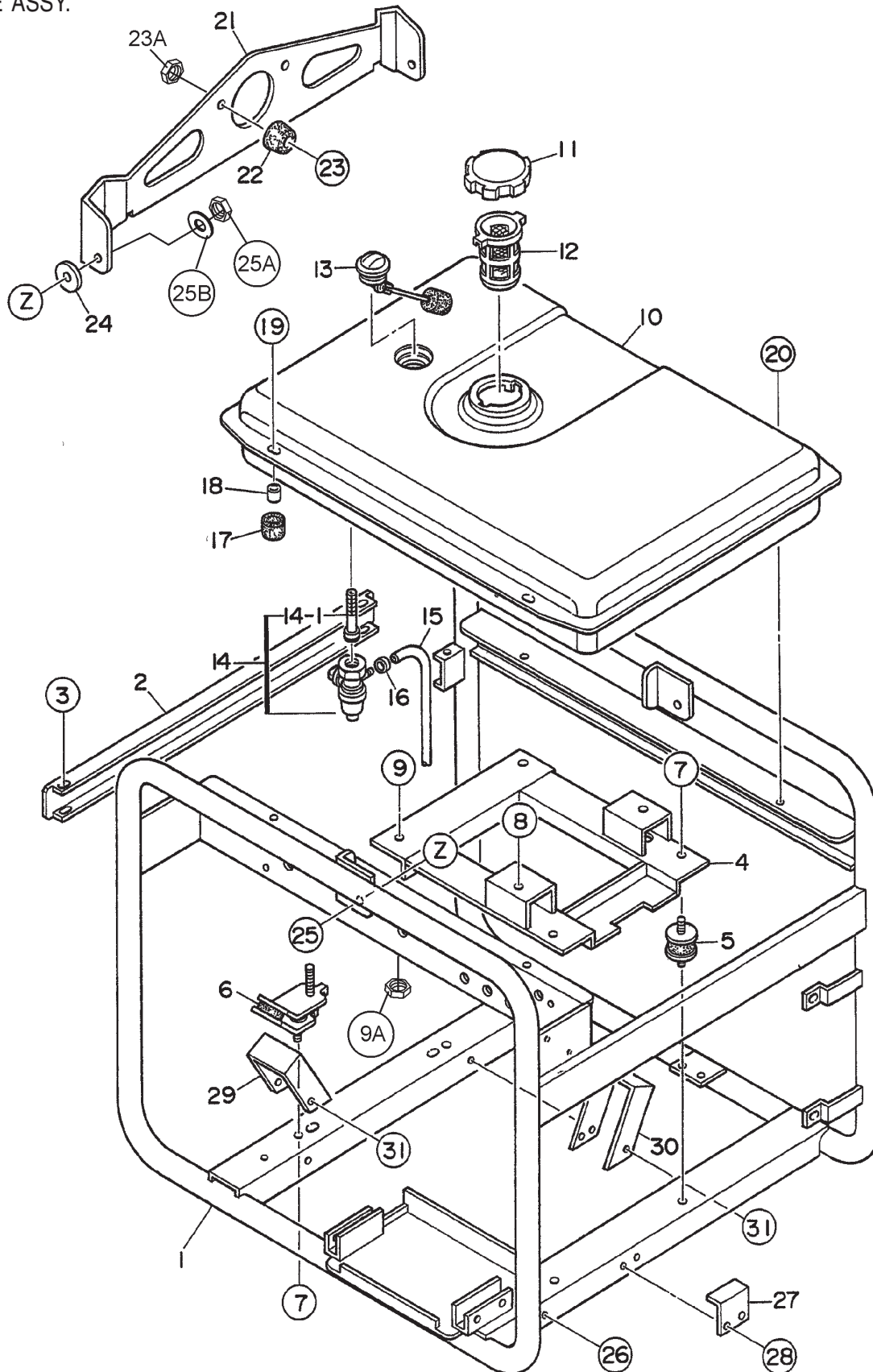
GA-6HE/GA-6HEA — MUFFLER ASSY.

MUFFLER ASSY.

<u>NO</u>	<u>PART NO</u>	<u>PART NAME</u>	<u>QTY.</u>	<u>REMARKS</u>
1	7912310003	MUFFLER	1	
2	18320ZC2000	PROTECTOR	1	REPLACES P/N 0602302001
3	18325ZB4000	PROTECTOR	1	REPLACES P/N 0602302002
4	18329ZB4000	SEAL	2	REPLACES P/N 0602302003
5	8355ZB4630	ARRESTOR, SPARK	1	REPLACES P/N 0602313060
6	90183671003	TAPPING SCREW	1	REPLACES P/N 0602322060
7	0017106012	BOLT HEX HEAD	5	
8	18333ZB4800	GASKET	1	REPLACES P/N 0602320175
9	957000802000	HEX HEAD BOLT	2	REPLACES P/N 0602322061
11	0017108020	BOLT HEX HEAD	1	
12	7905469004	BRACKET	1	
13	0017108025	BOLT HEX HEAD	2	
13A	020708000	HEX NUT	2	
14	0017108020	BOLT HEX HEAD	1	
15	7905469004	BRACKET	1	
16	0017106020	BOLT HEX HEAD	1	
17	0017106012	BOLT HEX HEAD	4	

GA-6HE/GA-6HEA — PIPE FRAME ASSY.

PIPE FRAME ASSY.



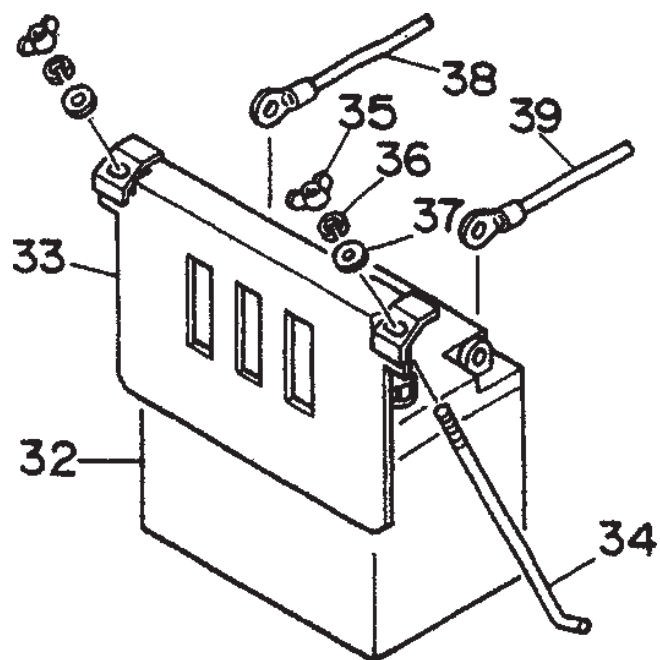
GA-6HE/GA-6HEA — PIPE FRAME ASSY.

PIPE FRAME ASSY.

<u>NO.</u>	<u>PART NO.</u>	<u>PART NAME</u>	<u>QTY.</u>	<u>REMARKS</u>
1	A5417000102	PIPE FRAME	1	GA-6HE
1	A5417000502	PIPE FRAME	1	GA-6HEA
2	A3417100004	BRACKET	1	
3	0017106016	HEX, HEAD BOLT	4	
4	7905443003	BASE	1	
5	3015419604	RUBBER SUSPENSION	2	
6	1725419214	RUBBER SUSPENSION	2	
7	0207008000	HEX, NUT	8	
8	0017108030	HEX, HEAD BOLT	2	
9	0017108040	HEX, HEAD BOLT	2	
9A	0207008000	HEX, NUT	2	
10	7905512002	FUEL TANK	1	
11	A9924800014	CAP, FUEL TANK	1	
12	A9924800004	FUEL FILTER	1	
13	0602125034	FUEL GAUGE	1	
14	0605510068	FUEL STRAINER	1	REPLACES P/N 0605510068
14-1	16952ZB4005	SCREEN SET	1	REPLACES P/N 0605510069
15	950014521040	HOSE	1	REPLACES P/N 0605513146
16	9500202080	HOSE BAND	2	REPLACES P/N 0605515178
17	7855525514	RUBBER CUSHION	2	
18	7855525604	COLLAR	2	
19	0017108030	BOLT HEX HEAD	2	
20	0017108020	BOLT HEX HEAD	2	
21	A9117200103	HANGER	1	
22	0601850097	STOPPER, 30029	1	
23	0021008025	MACHINE SCREW	1	
23A	0207008000	HEX, NUT	1	
24	A9311100004	PLASTIC WASHER	2	GA-6HE
24	0601851116	PLASTIC WASHER	2	GA-6HEA
25	0011308025	HEX, HEAD BOLT	2	
25A	0037908000	HEX, NUT	2	
25B	0042108000	PLAIN WASHER	2	
26	0019206016	HEX, HEAD BOLT	1	
27	7915456004	STOPPER	1	
28	0017106016	HEX, HEAD BOLT	2	
29	7915455103	COVER	1	
30	7815455003	COVER	1	
31	0017106016	HEX, HEAD BOLT	6	

GA-6HE/GA-6HEA — BATTERY ASSY.

BATTERY ASSY.



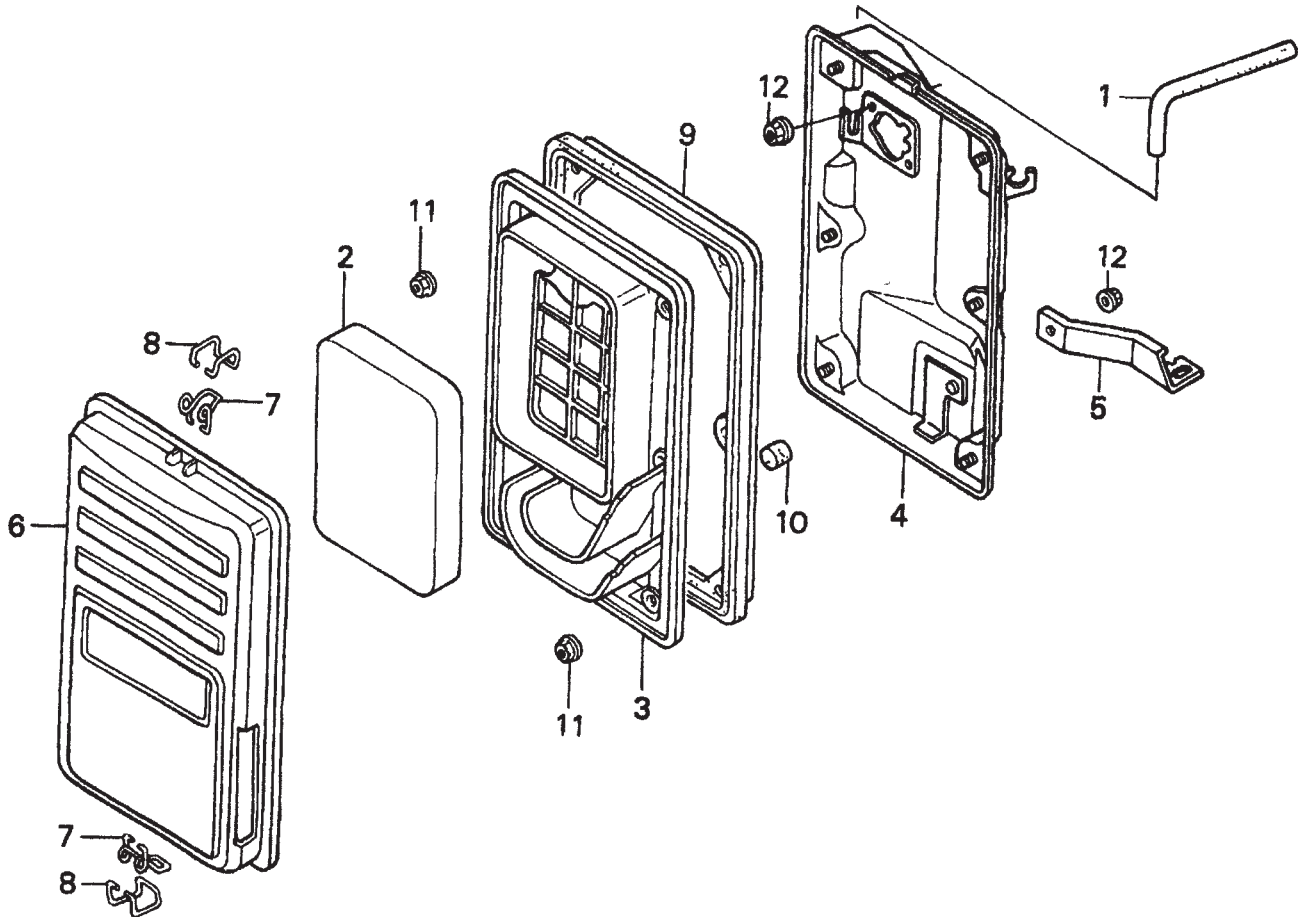
GA-6HE/GA-6HEA — BATTERY ASSY.

BATTERY ASSY.

<u>NO.</u>	<u>PART NO.</u>	<u>PART NAME</u>	<u>QTY.</u>	<u>REMARKS</u>
32		BATTERY	1	PURCHASE LOCALLY
33	7905458103	BATTERY BAND	1	
34	A5344200004	BATTER BOLT	2	
35	0037806000	WING NUT	2	
36	0040006000	SPRING NUT	2	
37	0041206000	WASHER, FLAT	2	
38	A5347000104	BATTERY CABLE	1	
39	A5347000004	BATTERY CABLE	1	

HONDA GX340K1EDE2 ENGINE — AIR CLEANER ASSY.

AIR CLEANER ASSY.



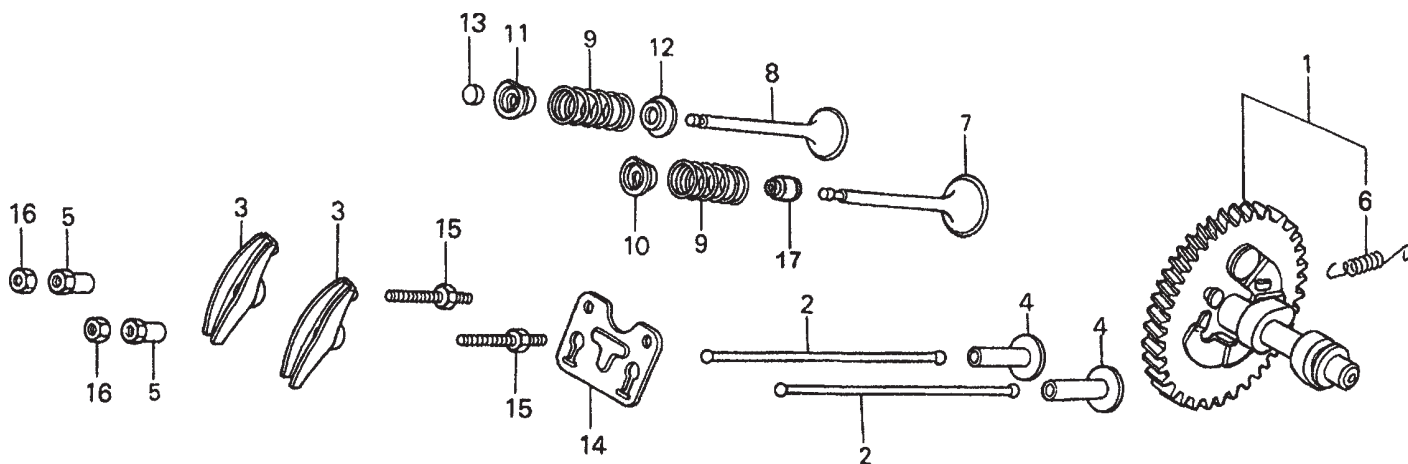
HONDA GX340K1EDE2 ENGINE — AIR CLEANER ASSY.

AIR CLEANER ASSY.

<u>NO.</u>	<u>PART NO.</u>	<u>PART NAME</u>	<u>QTY.</u>	<u>REMARKS</u>
1	15721ZB4000	TUBE BREATHER	1	
2	17211899000	ELEMENT, AIR CLEANER	1	
3	17212ZB4003	SEPARATOR, AIR CLEANER	1	
4	17220ZB4003	HOUSING, AIR CLEANER	1	
5	17222ZC2000	STAY, AIR CLEANER	1	
6	17231899000	COVER, AIR CLEANER	1	
7	17235899000	CLIP A, AIR CLEANER WIRE	2	
8	17236899000	CLIP B, AIR CLEANER WIRE	2	
9	17252899000	SEAL, AIR CLEANER	1	
10	17367413690	FILTER, DRAIN TUBE	1	
11	9405005000	NUT, FLANGE (5MM)	6	
12	9405006000	NUT, FLANGE (6MM)	3	

HONDA GX340K1EDE2 ENGINE — CAMSHAFT ASSY.

CAMSHAFT ASSY.



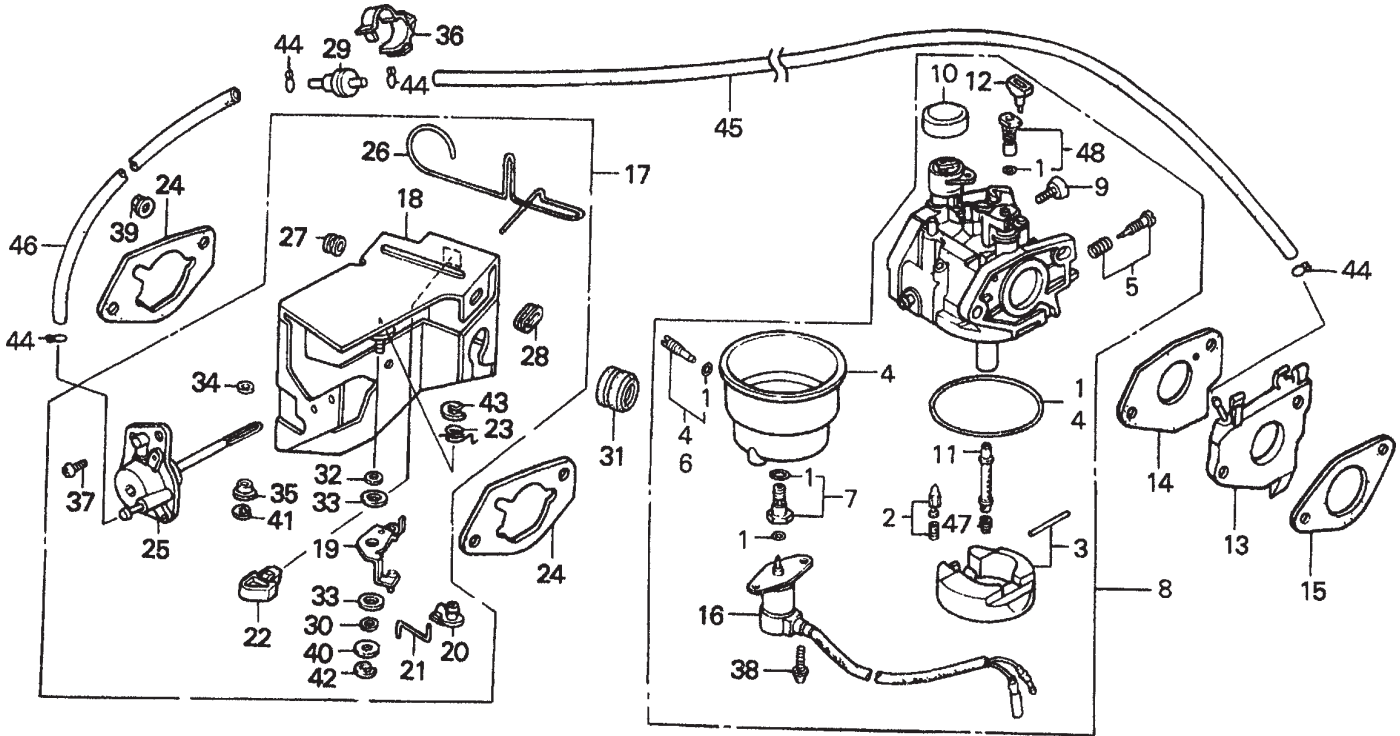
HONDA GX340K1EDE2 ENGINE — CAMSHAFT ASSY.

CAMSHAFT ASSY.

<u>NO.</u>	<u>PART NO.</u>	<u>PART NAME</u>	<u>QTY.</u>	<u>REMARKS</u>
1	14100ZE3020	CAMSHAFT ASSY.	1	INCLUDES ITEMS/W*
2	14410ZE3013	ROD, PUSH	2	
3	14431ZE2000	ARM, VALVE ROCKER	2	
3	14431ZE2010	ARM, VALVE ROCKER	2	
4	14441ZE2000	LIFTER, VALVE	2	
5	14451ZE1013	PIVOT, ROCKER ARM	2	
6*	14568ZE1000	SPRING, WEIGHT RETURN	1	
7	14711ZE3000	VALVE, IN.	1	
8	14721ZE3000	VALVE, EX.	1	
9	14751ZE2003	SPRING, VALVE	2	
10	14771ZE2000	RETAINER, IN. VALVE SPRING	1	
11	14773ZE2000	RETAINER, EX. VALVE SPRING	1	
12	14775ZE2010	SEAT, VALVE SPRING	1	
13	14781ZE2000	ROTATOR, VALVE	1	
14	14791ZE2010	PLATE, PUSH ROD GUIDE	1	
15	90012ZE0010	BOLT, PIVOT (8MM)	2	
16	90206ZE1000	NUT, PIVOT ADJ.	2	

HONDA GX340K1EDE2 ENGINE — CARBURETOR ASSY.

CARBURETOR ASSY.



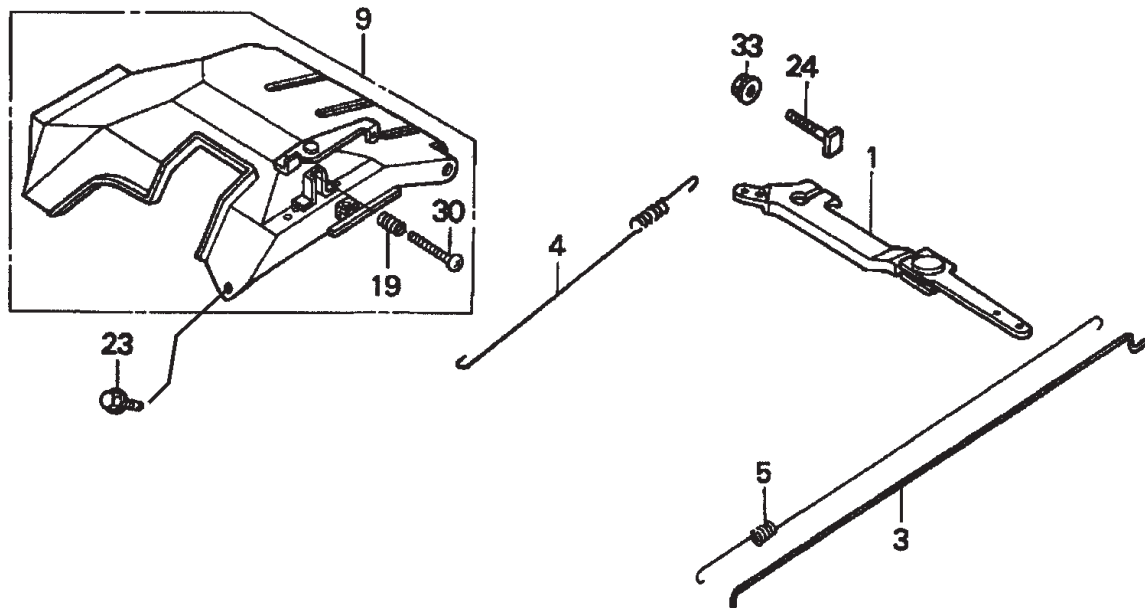
HONDA GX340K1EDE2 ENGINE — CARBURETOR ASSY.

CARBURETOR ASSY.

<u>NO.</u>	<u>PART NO.</u>	<u>PART NAME</u>	<u>QTY.</u>	<u>REMARKS</u>
1*	16010ZE3701	GASKET SET	1	
2*	16011ZA0931	VALVE SET, FLOAT	1	
3*	16013ZA0931	FLOAT SET	1	
4*	16015ZA0931	CHAMBER SET, FLOAT	1	
5*	16016ZH7W01	SCREW SET	1	
6	16024124760	SCREW SET, DRAIN	1	
7*	16028ZA0931	SCREW SET B	1	
8	16100ZE3F11	CARBURETOR ASSY. (BE82B B)	1	INCLUDES ITEMS W/*
9*	16124ZE0005	SCREW, THROTTLE STOP	1	
10*	16148141881	CAP, CHOKE LEVER DUST	1	
11*	16166ZE3F10	NOZZLE, MAIN	1	
12*	16172ZE3W10	COLLAR, SET	1	
13	16211ZE3700	INSULATOR, CARBURETOR	1	
14	16221ZE3800	GASKET, CARBURETOR	1	
15	16223ZE3800	GASKET, INSULATOR	1	
16*	16230ZE3701	VALVE ASSY., SOLENOID	1	
17	16260ZE2722	STAY ASSY., MANUAL CHOKE	1	INCLUDES ITEMS W/#
18#	16261ZE2702	STAY, SOLENOID	1	
19#	16262ZE2711	LEVER, CHOKE	1	
20#	16263ZA0000	JOINT, ROD	1	
21#	16264ZE2701	ROD, CHOKE	1	
22#	16265ZE2721	STOPPER, CHOKE ROD	1	
23#	16268ZE2721	SPRING, MANUAL CHOKE	1	
24	16269ZA0800	GASKET, AIR CLEANER	2	
25#	16400ZE2703	DIAPHRAGM ASSY.	1	
26#	16611ZE2711	ROD, CHOKE CONTROL	1	
27#	16613893000	GROMMET, CHOKE ROD	1	
28#	16615893000	GUIDE, CHOKE ROD	1	
29	36135ZF6D41	VALVE, DASHPOT CHECK	1	
30#	53149964003	BUSH, ARM PIVOT	1	
31	88911MJ3000	GROMMET, FENDER	1	
32#	90431ZE2700	WASHER, CHOKE LEVER	1	
33#	90432ZE2700	SEAL, CHOKE LEVER	2	
34#	90433ZE2700	WASHER, THRUST (2.7X8)	1	
35#	90434ZE2700	COLLAR, LEVER	1	
36	90650SD9003	CLIP, WIRE HARNESS	1	
37#	93500050120A	SCREW, PAN (5X12)	2	
38*	938920501208	SCREW, WASHER (5X12)	2	
39	9405006000	NUT, FLANGE (6MM)	2	
40#	9410305000	WASHER, PLAIN (5MM)	1	
41#	9454002010	E-RING (2MM)	1	
42#	9454004010	E-RING (4MM)	1	
43#	9454007010	E-RING (7MM)	1	
44	9500202070	CLIP, TUBE (B7)	4	
45	950053500810M	BULK HOSE, VACUUM (3.5X8000) (3.5X75)	1	
46	950053500810M	BULK HOSE, VACUUM (3.5X8000) (3.5X130)	1	
47	99101ZH80950	JET, MAIN (#95) (OPTIONAL)	1	
47	99101ZH80980	JET, MAIN (#98) (OPTIONAL)	1	
47*	99101ZH81000	JET, MAIN (#100)	1	
48*	99204ZE00350	JET SET, PILOT (#35)	1	

HONDA GX340K1EDE2 ENGINE — CONTROL ASSY.

CONTROL ASSY.



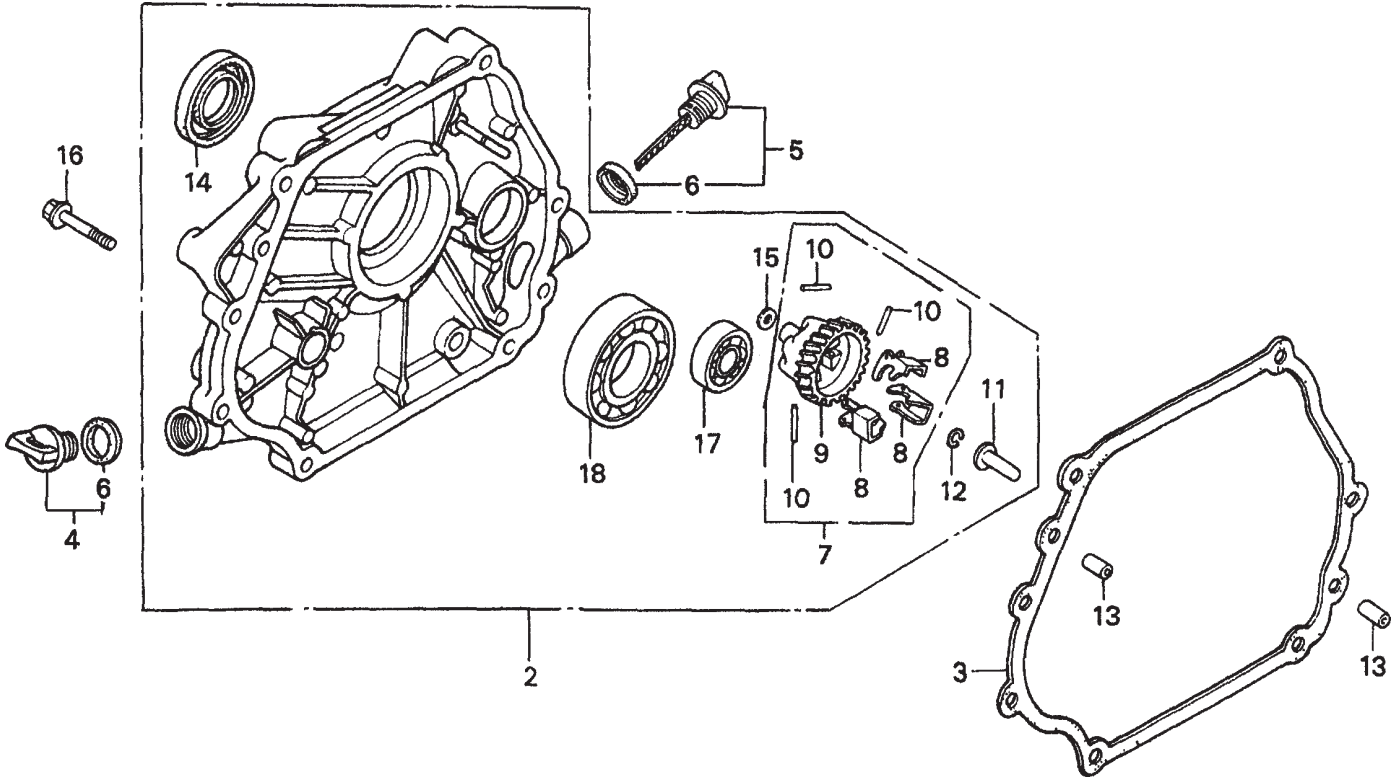
HONDA GX340K1EDE2 ENGINE — CONTROL ASSY.

CONTROL ASSY.

<u>NO.</u>	<u>PART NO.</u>	<u>PART NAME</u>	<u>QTY.</u>	<u>REMARKS</u>
1	16550ZE3700	ARM, GOVERNOR	1	
3	16555ZE3000	ROD, GOVERNOR	1	
4	16561ZE3000	SPRING, GOVERNOR	1	
5	16562ZE3700	SPRING, THROTTLE RETURN	1	
9	16570ZE3700	CONTROL ASSY.	1	INCLUDES ITEMS W/*
19*	16584883300	SPRING, CONTROL ADJUSTING	1	
23	90013883000	BOLT, FLANGE (6X12) (CT200)	2	
24	90015ZE5010	BOLT, GOVERNOR ARM	1	
30*	93500050350A	SCREW, PAN (5X35)	1	
33	9405006000	NUT, FLANGE (6MM)	1	

HONDA GX340K1EDE2 ENGINE — CRANKCASE COVER ASSY.

CRANKCASE COVER ASSY.



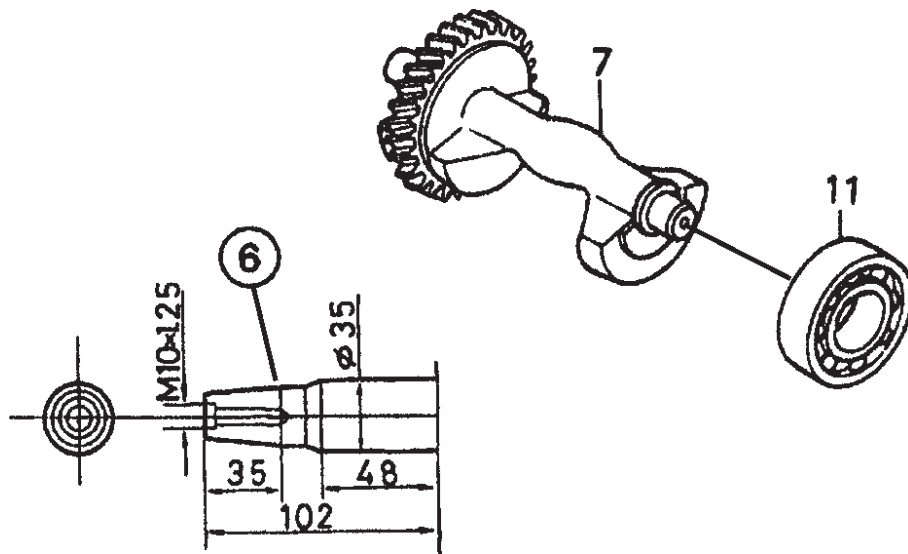
HONDA GX340K1EDE2 ENGINE — CRANKCASE COVER ASSY.

CRANKCASE COVER ASSY.

<u>NO.</u>	<u>PART NO.</u>	<u>PART NAME</u>	<u>QTY.</u>	<u>REMARKS</u>
2	11300ZE3020	COVER ASSY., CRANKCASE (S-TYPE)	1	INCLUDES ITEMS W/*
3	11381ZE3801	GASKET, CASE COVER	1	
4	15600ZG4003	CAP ASSY., OIL FILLER	1	INCLUDES ITEMS W/%
5	15600735003	CAP ASSY., OIL FILLER	1	INCLUDES ITEMS W/%
6%	15625ZE1003	GASKET, OIL FILLER CAP	2	
7	16510ZE3000	GOVERNOR ASSY.	1	INCLUDES ITEMS W/#
8#	16511ZE8000	WEIGHT, GOVERNOR	3	
9#	16512ZE3000	HOLDER, GOVERNOR WEIGHT	1	
10#	16513ZE2000	PIN, GOVERNOR WEIGHT	3	
11*	16531ZE2000	SLIDER, GOVERNOR	1	
12*	90602ZE1000	CLIP, GOVERNOR HOLDER	1	
13	90701HC4000	PIN, DOWEL (8X12)	2	
14*	92102ZE3004	OIL SEAL (35X52X8)	1	
15*	9410106800	WASHER, PLAIN (6MM)	1	
16	957010804000	BOLT, FLANGE (8X40)	7	
17*	961006202000	BEARING, RADIAL BALL (6202)	1	
18*	961006207000	BEARING, RADIAL BALL (6207)	1	

HONDA GX340K1EDE2 ENGINE — CRANKSHAFT ASSY.

CRANKSHAFT ASSY.



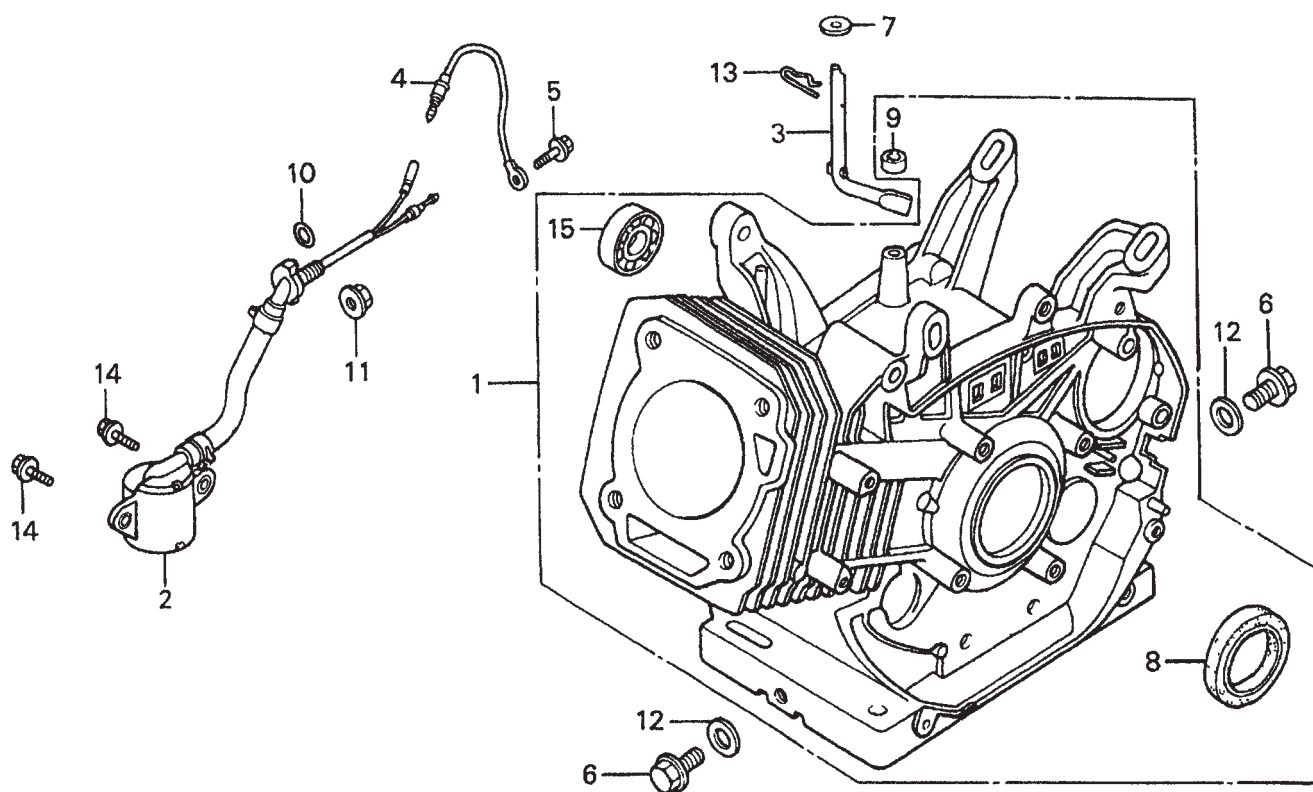
HONDA GX340K1EDE2 ENGINE — CRANKSHAFT ASSY.

CRANKSHAFT ASSY.

<u>NO.</u>	<u>PART NO.</u>	<u>PART NAME</u>	<u>QTY.</u>	<u>REMARKS</u>
6	13310ZE3701	CRANKSHAFT (E-TYPE)	1	
7	13351ZE3010	WEIGHT, BALANCER	1	
11	961006207000	BEARING, RADIAL BALL (6207)	1	

HONDA GX340K1EDE2 ENGINE — CYLINDER BARREL ASSY.

CYLINDER BARREL ASSY.



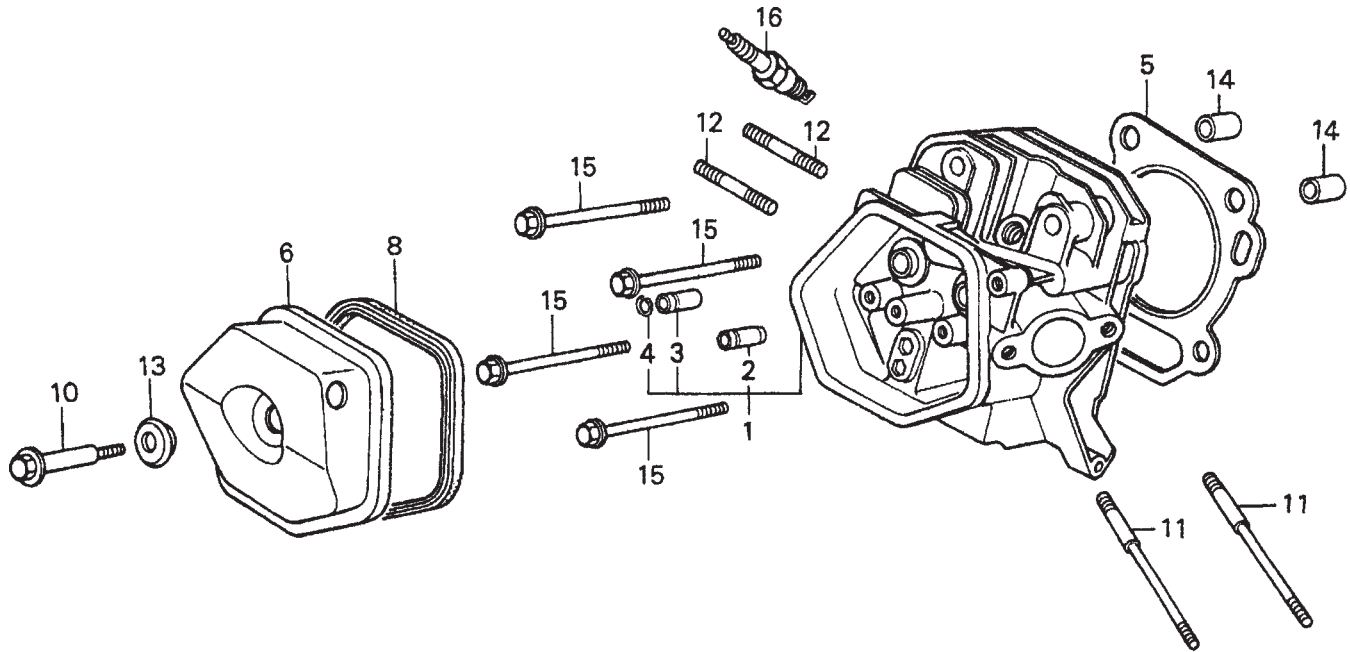
HONDA GX340K1EDE2 ENGINE — CYLINDER BARREL ASSY.

CYLINDER BARREL ASSY.

<u>NO.</u>	<u>PART NO.</u>	<u>PART NAME</u>	<u>QTY.</u>	<u>REMARKS</u>
1	12000ZE3817	CYLINDER ASSY. (ALERT)	1	INCLUDES ITEMS W/*
2	15510ZE2043	SWITCH ASSY., OIL LEVEL	1	
3	16541ZE3010	SHAFT, GOVERNOR ARM	1	
4	31161ZE2000	WIRE, GROUND	1	
5	90013883000	BOLT, FLANGE (6X12) (CT200)	1	
6	90131896650	BOLT, DRAIN PLUG	2	
7	90446KE1000	WASHER (8.2X17X0.8)	1	
8*	91201ZE3004	OIL SEAL (35X52X8)	1	
9*	91203952771	OIL SEAL (8X14X5)	1	
10	91353671003	O-RING (13.5X1.5) (ARAI)	1	
11	9405010000	NUT, FLANGE (10MM)	1	
12	9410912000	WASHER, DRAIN PLUG (12MM)	2	
13	9425110000	PIN, LOCK (10MM)	1	
14	957010601200	BOLT FLANGE (6X12)	2	
15*	961006202000	BEARING, RADIAL BALL (6202)	1	

HONDA GX340K1EDE2 ENGINE — CYLINDER HEAD ASSY.

CYLINDER HEAD ASSY.



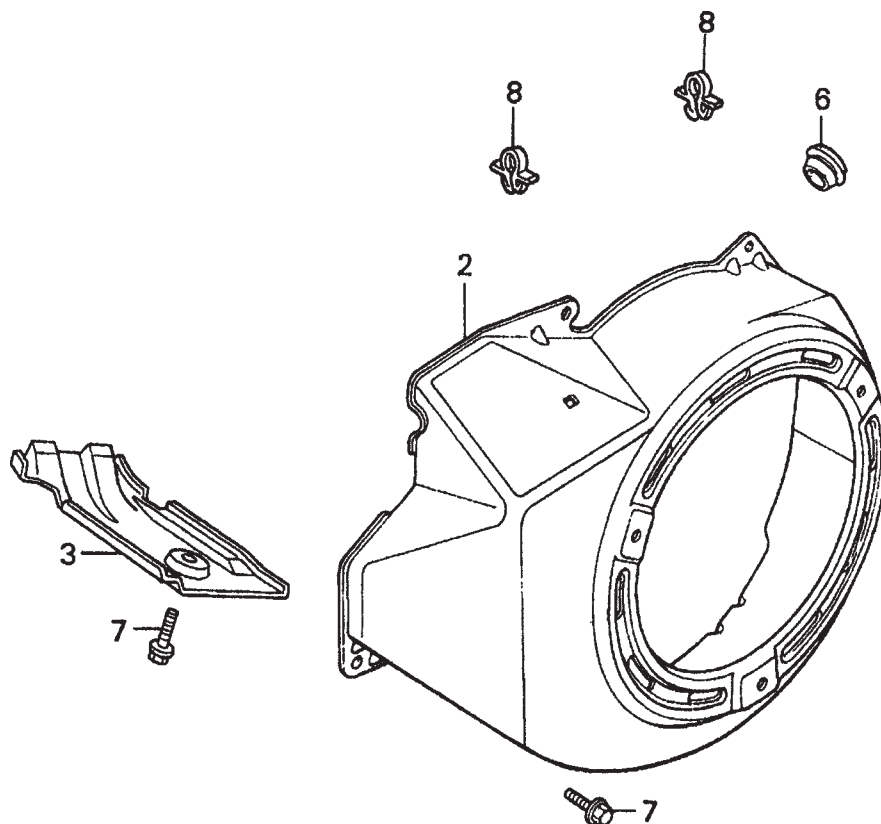
HONDA GX340K1EDE2 ENGINE — CYLINDER HEAD ASSY.

CYLINDER HEAD ASSY.

<u>NO.</u>	<u>PART NO.</u>	<u>PART NAME</u>	<u>QTY.</u>	<u>REMARKS</u>
1	12200ZF6W01	CYLINDER HEAD	1	INCLUDES ITEMS W/*
2	12204ZE2306	GUIDE, VALVE (OS) (OPTIONAL)	1	
3*	12205ZE2305	GUIDE, EX. VALVE (OS) (OPTIONAL)	1	
4*	12216ZE2300	CLIP, VALVE GUIDE	1	
5	12251ZE3W00	GASKET, CYLINDER HEAD	1	
6	12310ZE2020	COVER, HEAD	1	
8	12391ZE2020	GASKET, CYLINDER HEAD COVER	1	
10	90014ZE2000	BOLT, HEAD COVER	1	
11	90042ZE3700	BOLT, STUD (8X106)	2	
12	92900080320E	BOLT 2, STUD (8X32)	2	
13	90441ZE2010	WASHER, HEAD COVER	1	
14	9430112200	PIN A, DOWEL (12X20)	2	
15	957011008000	BOLT, FLANGE (10X80)	4	
16	9807955846	SPARK PLUG (BPR5ES) (NGK) (OPTIONAL)	1	
16	9807955855	SPARK PLUG (W16EPR-U) (DENSO)	1	

HONDA GX340K1EDE2 ENGINE — FAN COVER ASSY.

FAN COVER ASSY.



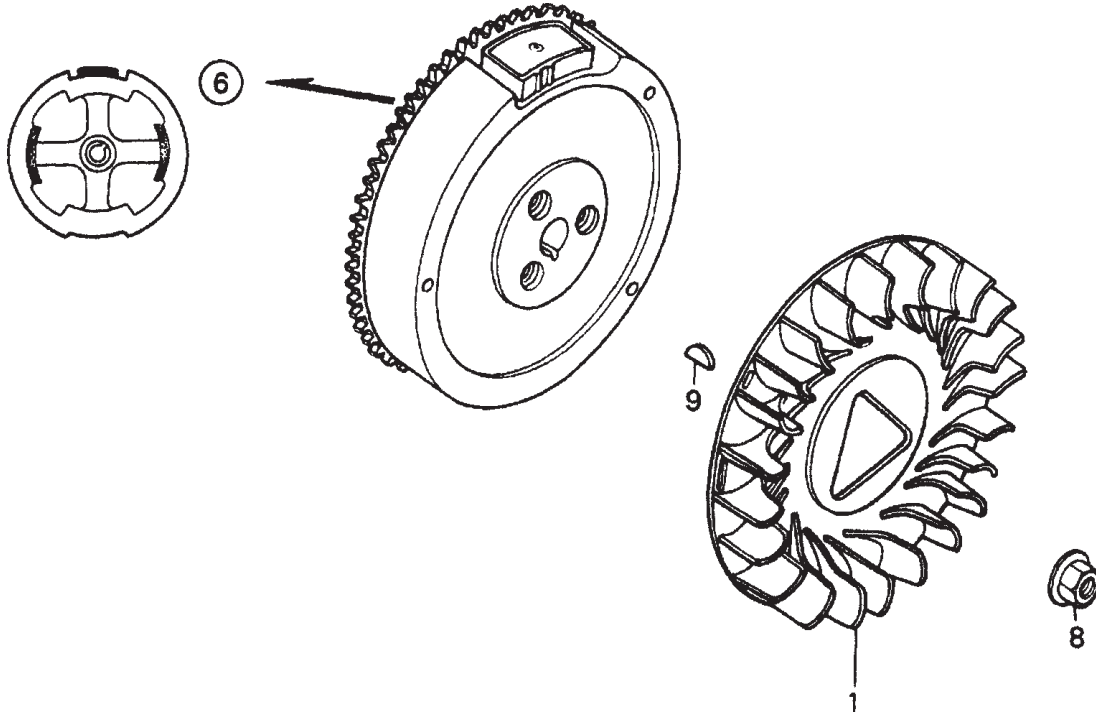
HONDA GX340K1EDE2 ENGINE — FAN COVER ASSY.

FAN COVER ASSY.

<u>NO.</u>	<u>PART NO.</u>	<u>PART NAME</u>	<u>QTY.</u>	<u>REMARKS</u>
2	19610ZE3700ZB	COVER, FAN *NH1* (BLACK)	1	
3	19631ZE3W00	SHROUD	1	
6	81329567020	GROMMET, DRAIN HOLE	1	
7	90013883000	BOLT, FLANGE (6X12) (CT200)	6	
8	90654SA4003	CLIP, WIRE HARNESS (6MM) (WHITE)	2	

HONDA GX340K1EDE2 ENGINE — FLYWHEEL ASSY.

FLYWHEEL ASSY.



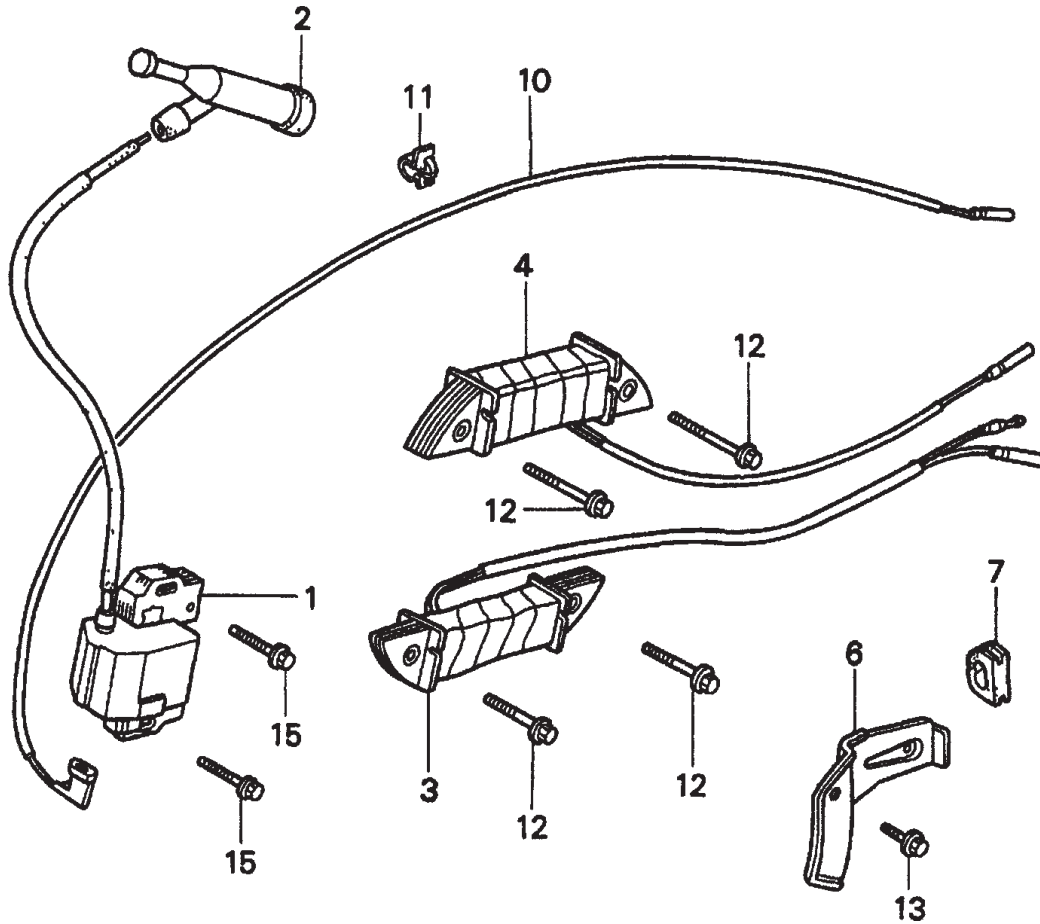
HONDA GX340K1EDE2 ENGINE — FLYWHEEL ASSY.

FLYWHEEL ASSY.

<u>NO.</u>	<u>PART NO.</u>	<u>PART NAME</u>	<u>QTY.</u>	<u>REMARKS</u>
1	19511ZE3000	FAN, COOLING	1	
6	31100ZE3712	FLYWHEEL, LAMP	1	
8	90201ZE3V00	NUT, SPECIAL 16MM	1	
9	90741ZE2000	KEY, SPECIAL WOODRUFF (25X18)	1	

HONDA GX340K1EDE2 ENGINE — IGNITION COIL ASSY.

IGNITION COIL ASSY.



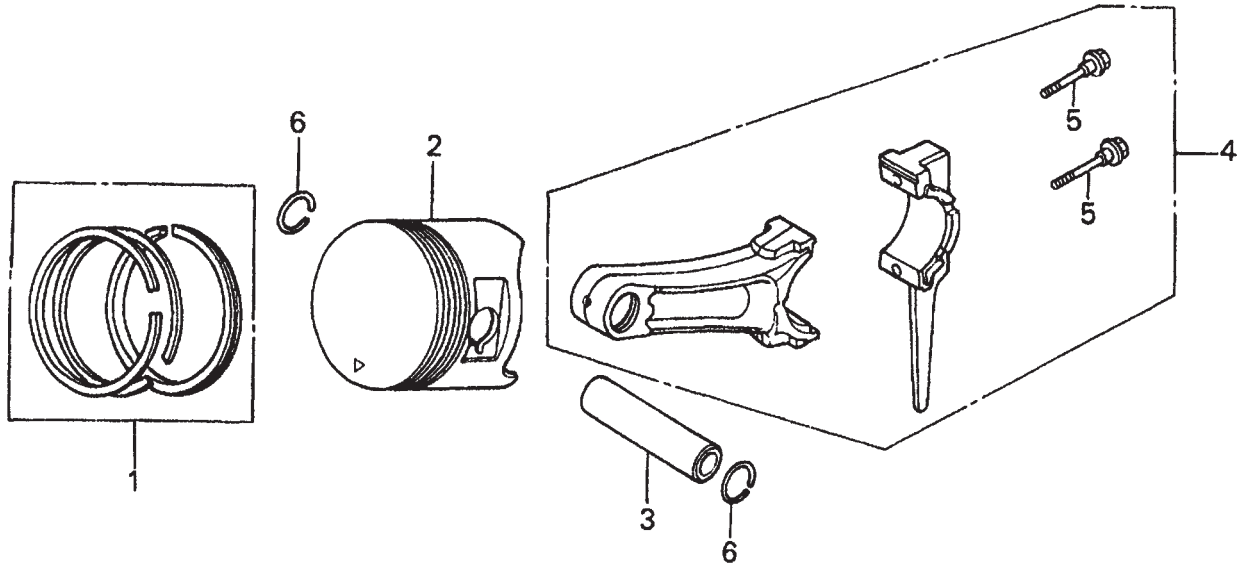
HONDA GX340K1EDE2 ENGINE — IGNITION COIL ASSY.

IGNITION COIL ASSY.

<u>NO.</u>	<u>PART NO.</u>	<u>PART NAME</u>	<u>QTY.</u>	<u>REMARKS</u>
1	30500ZE2023	COIL ASSY., IGNITION	1	
2	30700ZE1013	CAP ASSY., NOISE SUPPRESSOR	1	
3	31510ZE1811	COIL ASSY., LAMP (12V/25W)	1	
4	31510ZE3003	COIL ASSY., LAMP (12V/25W)	1	
6	31511ZE3000	CLAMP, WIRE	1	
7	31512ZE2000	GROMMET, WIRE	1	
10	36101ZE3800	WIRE, STOP SWITCH (470MM)	1	
11	36103ZE1000	HOLDER, STOP SWITCH WIRE	1	
12	90012888000	BOLT, FLANGE (6X40)	4	
13	90013883000	BOLT, FLANGE (6X12) (CT200)	1	
15	90015883000	BOOT, FLANGE (6X28)	2	

HONDA GX340K1EDE2 ENGINE — PISTON ASSY.

PISTON ASSY.



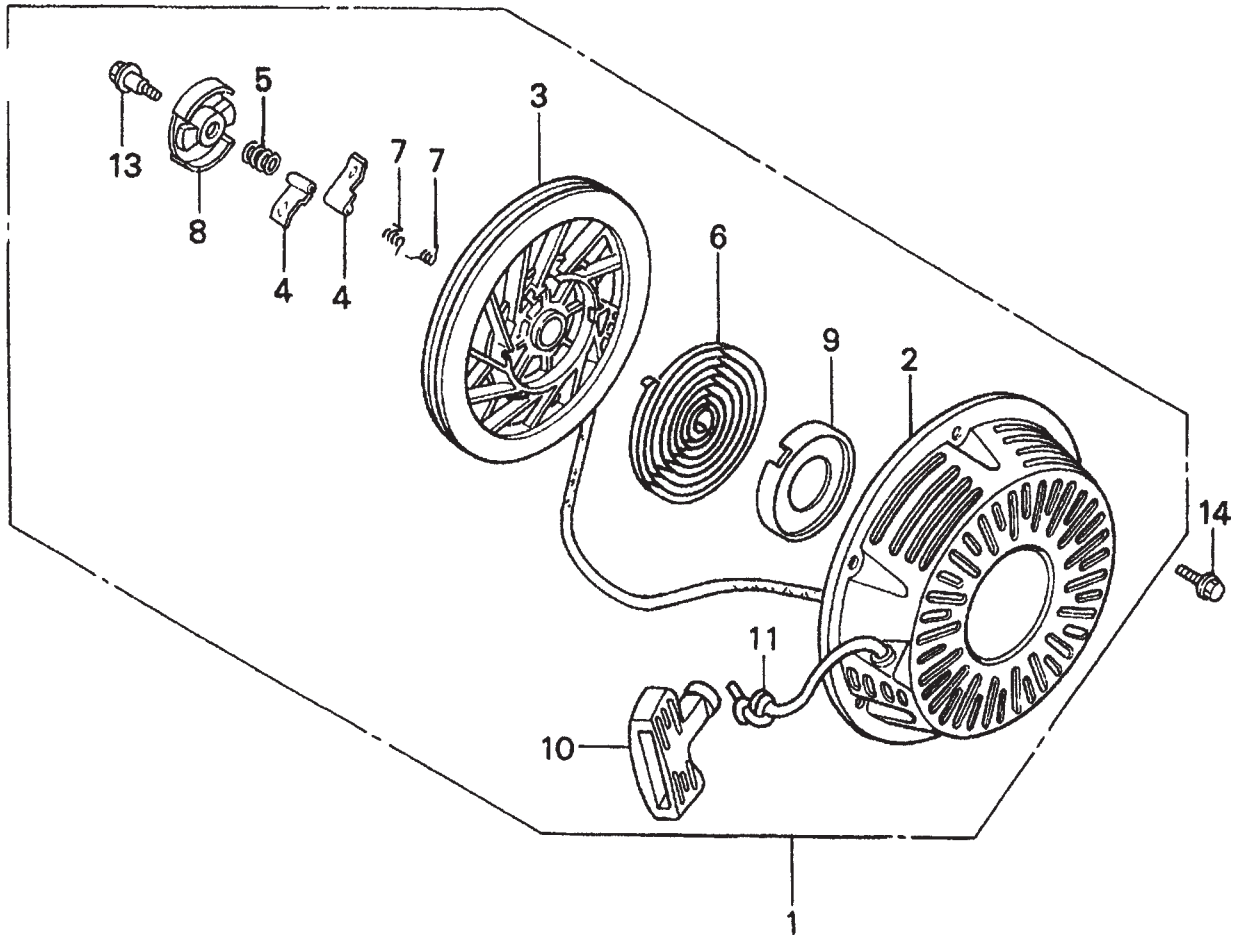
HONDA GX340K1EDE2 ENGINE — PISTON ASSY.

PISTON ASSY.

<u>NO.</u>	<u>PART NO.</u>	<u>PART NAME</u>	<u>QTY.</u>	<u>REMARKS</u>
1	13010ZE3003	RING SET, PISTON (STD)	1	
1	13011ZE3003	RING SET, PISTON (OS 0.25) (OPTIONAL)	1	
1	13012ZE3003	RING SET, PISTON (OS 0.50) (OPTIONAL)	1	
1	13013ZE3003	RING SET, PISTON (0.75) (OPTIONAL)	1	
2	13101ZE3W00	PISTON (STD)	1	
3	13111ZF6000	PIN, PISTON	1	
4	13200ZE3010	ROD ASSY., CONNECTING (STD)	1	INCLUDES ITEMS W/*
5*	90001ZE8000	BOLT, CONNECTING ROD	2	
6	90601ZE3000	CLIP, PISTON PIN (20MM)	2	

HONDA GX340K1EDE2 ENGINE — RECOIL STARTER ASSY.

RECOIL STARTER ASSY.



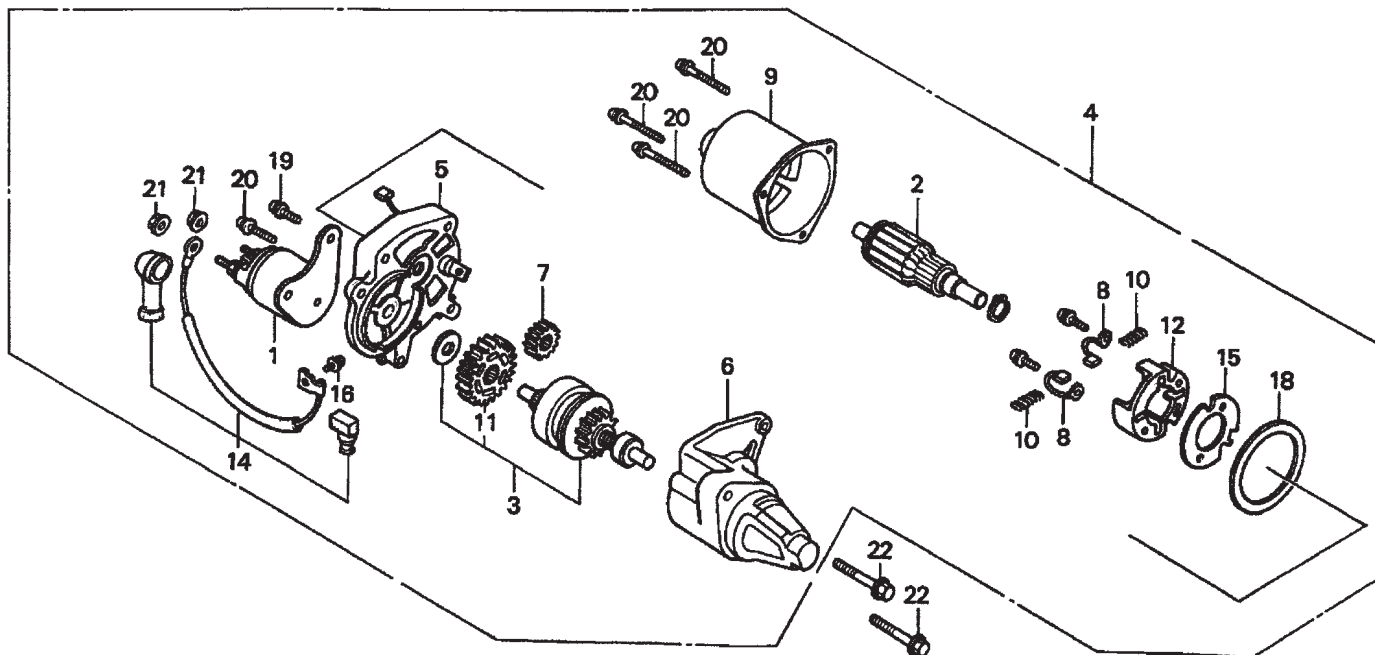
HONDA GX340K1EDE2 ENGINE — RECOIL STARTER ASSY.

RECOIL STARTER ASSY.

<u>NO.</u>	<u>PART NO.</u>	<u>PART NAME</u>	<u>QTY.</u>	<u>REMARKS</u>
1	28400ZE3W01ZB	STARTER ASSY., RECOIL *NH1* (BLACK)	1	INCLUDES ITEMS W/*
2*	28410ZE3W01ZB	CASE, RECOIL STARTER *NH1* (BLACK)	1	
3*	28421ZE3W01	PULLEY, RECOIL STARTER	1	
4*	28422ZE2W01	RATCHET, STARTER	2	
5*	28441ZE2W01	SPRING, FRICTION	1	
6*	28442ZE2W01	SPRING, STARTER RETURN	1	
7*	28443ZE2W01	SPRING, RATCHET	2	
8*	28444ZE2W01	RETAINER, SPRING	1	
9*	28445ZE2W01	HOLDER, SPRING	1	
10*	28461ZE2W02	GRIP, STARTER	1	
11*	28462ZV7003	ROPE, RECOIL STARTER	1	REPLACES P/N 28462ZE3W01
13*	90004ZE2W01	SCREW, CENTER	1	
14	90008ZE2003	BOLT, FLANGE (6X10)	3	

HONDA GX340K1EDE2 ENGINE — STARTER MOTOR ASSY.

STARTER MOTOR ASSY.



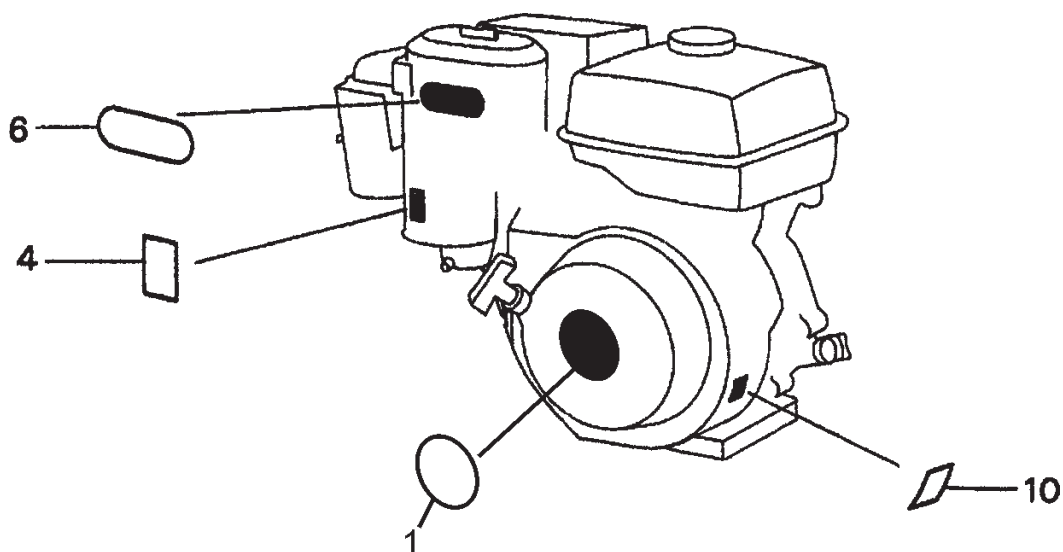
HONDA GX340K1EDE2 ENGINE — STARTER MOTOR ASSY.

STARTER MOTOR ASSY.

<u>NO.</u>	<u>PART NO.</u>	<u>PART NAME</u>	<u>QTY.</u>	<u>REMARKS</u>
1*	31204ZA0003	CONTACTOR ASSY.	1	
2*	31206ZE3003	ARMATURE	1	
3*	31207ZE3003	CLUTCH, OVERRUNNING	1	INCLUDES ITEMS W/%
4	31210ZE3013	MOTOR UNIT, STARTER	1	INCLUDES ITEMS W/*
5*	31211ZE2003	BRACKET, CENTER	1	
6*	31212ZE3003	BRACKET, FRONT	1	
7*	31213ZE2003	GEAR, DRIVE PINION	1	
8*	31215ZE2003	BRUSH	2	
9*	31218ZE3003	YOKE	1	
10*	31219ZE2003	SPRING, BRUSH RETURN	4	
11*%	31222ZE3791	GEAR, REDUCTION	1	
12*	31231ZE2003	HOLDER, BRUSH	1	
14*	31232ZE3003	WIRE, WATER COVER	1	INCLUDES ITEMS W/#
15*	31233ZE2003	INSULATOR	1	
16*#	90110ZE2003	SCREW, WASHER (4X6)	1	
18*	91601ZE2003	GASKET	1	
19*	90007ZE2003	BOLT, WASHER (5X14)	2	
20*	938920503208	SCREW, WASHER (5X3)	4	
21*	9407006080	NUT, WASHER (6 MM)	2	
22	957010803508	BOLT, FLANGE (8X35)	2	

HONDA GX340K1EDE2 ENGINE — LABELS ASSY.

LABELS ASSY.



HONDA GX340K1EDE2 ENGINE — LABELS ASSY.

LABELS ASSY.

<u>NO.</u>	<u>PART NO.</u>	<u>PART NAME</u>	<u>QTY.</u>	<u>REMARKS</u>
1	87521ZE3W01	EMBLEM	1	
4	87528898620	MARK, CHOKE	1	
6	87533ZC0630	MARK, AIR CLEANER	1	
10	87594ZB4A00	MARK, OIL CAUTION	1	