

OPERATION AND PARTS MANUAL



MODEL GA3.6H Series

GA-3.6HZ

GA3.6H

GA3.6HA

**Portable Generators
(HONDA GASOLINE ENGINE)**

Revision #0 (11/01/05)

THIS MANUAL MUST ACCOMPANY THE EQUIPMENT AT ALL TIMES.

Multiquip GA-3.6H Series AC Portable Generators

Proposition 65 Warning	2
Table Of Contents	4
Parts Ordering Procedures	5
Safety Message Alert Symbols	6-7
Rules for Safe Operation	8-10
Specifications (Generator/Engine)	11
Dimensions	12
General Information	13
Load Application	14
Controls and Indicators	15-17
Generator Refueling	18
Installation	19-20
Pre-Inspection	21
Pre-Inspection (Engine)	22
Initial Start-up (Engine)	23
Initial Start-up/Generator Operation	24
Generator Operation/Shutdown	25
Preparation For Long Term Storage	26
Maintenance (Engine).....	27-28
Wiring Diagram (GA-3HZ Generator)	29
Wiring Diagram (GA-3H Generator)	30
Wiring Diagram (GA-3HA Generator)	31
Troubleshooting (Engine).....	32-33
Troubleshooting (Generator)	34
Explanation of Code In Remarks Column	36
Suggested Spare Parts	37

HONDA GX240K1EDN2 ENGINE

Air Cleaner Assembly	54-55
Camshaft Assembly	56-57
Carburetor Assembly	58-59
Control Assembly	60-61
Crankcase Cover Assembly	62-63
Crankshaft Assembly	64-65
Cylinder Barrel Assembly	66-67
Cylinder Head Assembly	68-69
Fan Cover Assembly	70-71
Flywheel Assembly	72-73
Ignition Coil Assembly	74-75
Piston Assembly	76-77
Recoil Starter Assembly	78-79
Solenoid Assembly	80-81
Label Assembly	82-83

Terms and Conditions Of Sale — Parts	84
--	----

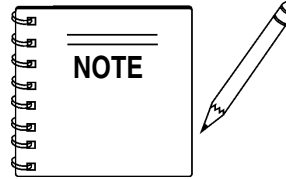
Component Drawings

Nameplate and Decals.....	38-39
Generator Assembly	40-41
Control Box Assembly (GA-3HZ)	42-43
Control Box Assembly (GA-3H)	44-45
Control Box Assembly (GA-3HA)	46-47
Muffler Assembly	48-49
Pipe Frame Assembly (GA-3HZ)	50-51
Pipe Frame Assembly (GA-3H/GA-3.6HA)	52-53

GA-3.6H Series— SUGGESTED SPARE PARTS

GA-3.6H Series 1 TO 3 UNITS WITH HONDA GX240K1EDN2 ENGINE

1 to 3 Units

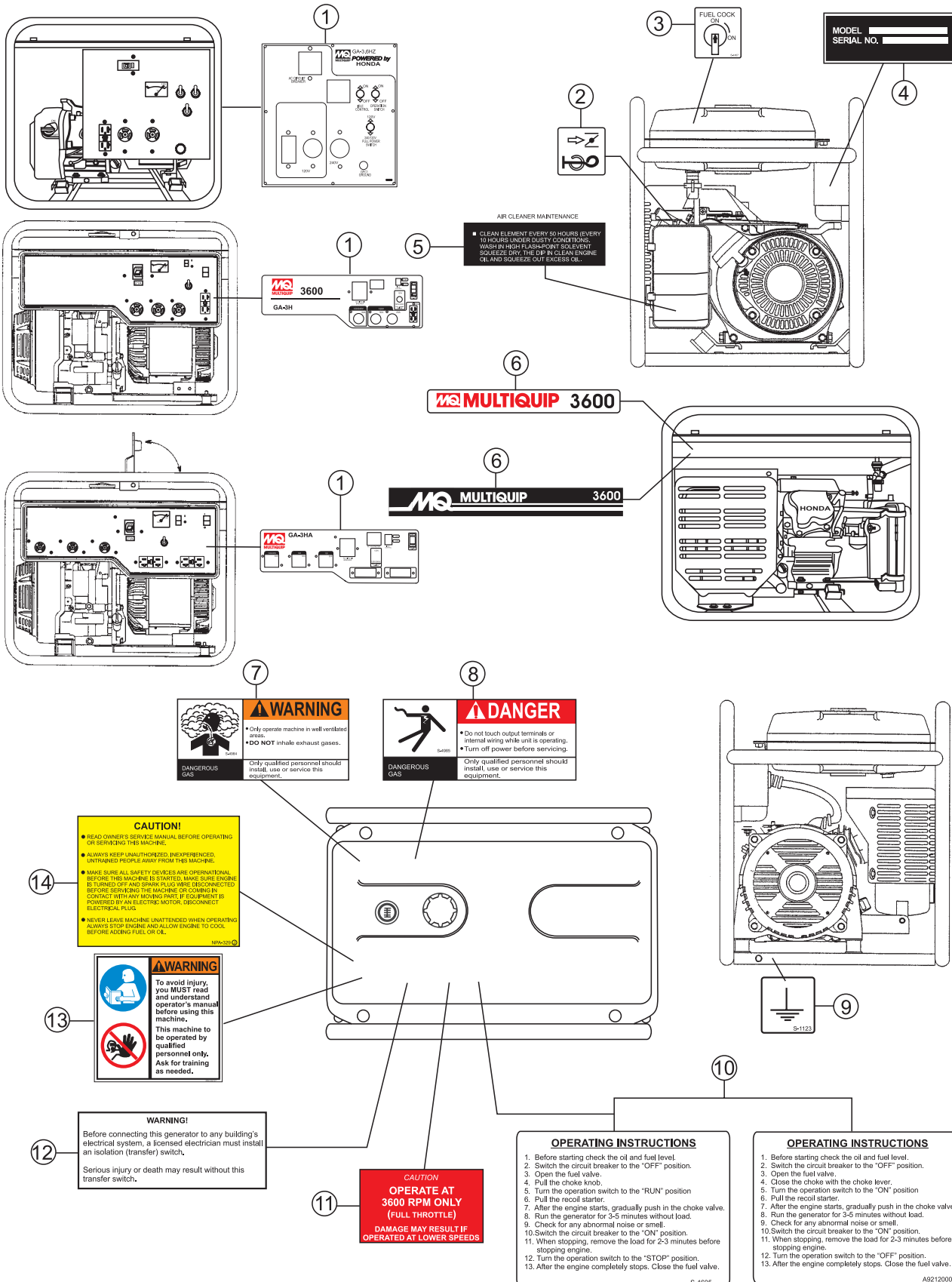


Part numbers on this Suggested Spare Parts List may supercede/replace the P/N shown in the text pages of this book.

<u>Qty.</u>	<u>P/N</u>	<u>Description</u>
1	0810106004	CAP FUEL TANK (GA3.6HZ)
1	A9924800014	CAP FUEL TANK (GA3.6H/3.6HA)
1	A9924800004	FILTER FUEL
1	7895419004	RUBBER SUSPENSION
4	1725419214	RUBBER SUSPENSION
3	9807955846	SPARK PLUG
1	34150ZH7003	ALERT UNIT, OIL
2	28462ZE2W11	ROPE, RECOIL
3	17211899000	ELEMENT AIR CLEANER

GA-3.6H Series— NAMEPLATE AND DECALS

NAMEPLATE AND DECALS



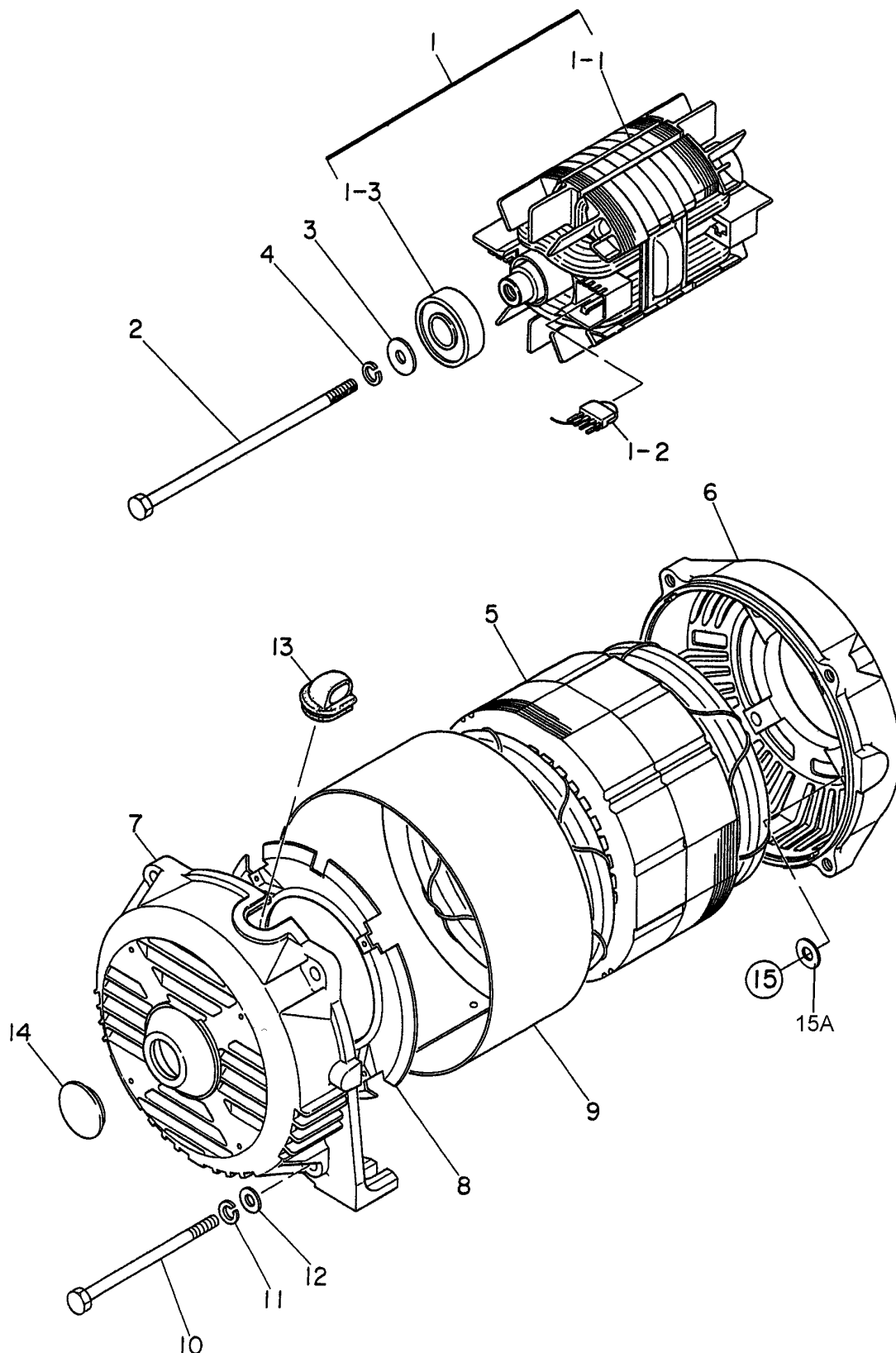
GA-3.6H Series — NAMEPLATE AND DECALS

NAMEPLATE AND DECALS

<u>NO.</u>	<u>PART NO.</u>	<u>PART NAME</u>	<u>QTY.</u>	<u>REMARKS</u>
1	7910501222	DECAL; CONTROL PANEL	1	GA-3.6HZ ONLY
1	A3511200002	DECAL; CONTROL PANEL	1	GA-3.6H ONLY
1	A3511200402	DECAL; CONTROL PANEL	1	GA3.6HA ONLY
2	87528898620	DECAL; CHOKE	1	REPLACES P/N 0600500047
3	1980680004	DECAL; FUEL COCK	1	S-3704
4		NAMEPLATE	1	CONTACT MQ PARTS DEPT.
5	87533ZC0630	DECAL; AIR CLEANER	1	REPLACES P/N 0600500045
6	7910631002	DECAL; MQ MULTQUIP 3600	1	GA-3.6HZ ONLY
6	A3561000003	DECAL; MQ MULTQUIP 3600	1	GA-3.6H & GA3.6HA ONLY
7	8700611804	DECAL; WARNING DANGEROUS GAS	1	S-4984
8	8700611904	DECAL; DANGER ELECTRICAL SHOCK HAZ.	1	S-4985
9	0800628504	DECAL; GROUND	1	S-1123
10	7900638004	DECAL; OPERATING INSTRUCTIONS	1	GA-3.6HZ ONLY S-4605
10	A9521200104	DECAL; OPERATING INSTRUCTIONS	1	GA-3.6H & GA3.6HA ONLY
11	7900636004	DECAL; CAUTION OPER. AT 3600 RPM ONLY	1	S-4461
12	0820610404	DECAL; WARNING TRANSFER SWITCH	1	S-3627
13	35137	DECAL; WARNING READ MANUAL	1	GA-3.6H & GA3.6HA ONLY
14	0820610304	DECAL; WARNING READ MANUAL	1	GA-3.6HZ ONLY

GA-3.6H Series— GENERATOR ASSY.

GENERATOR ASSY.



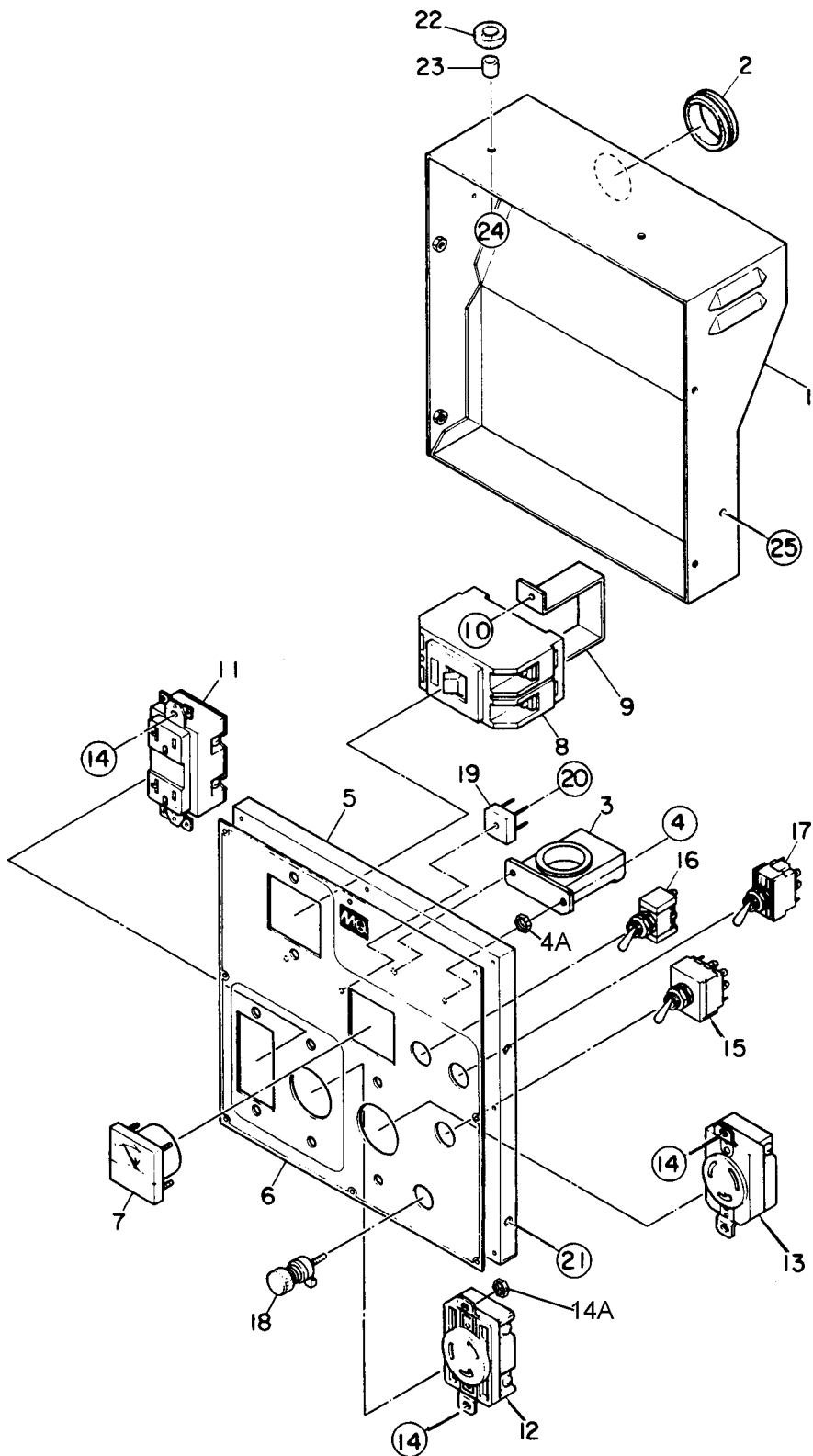
GA-3.6H Series— GENERATOR ASSY.

GENERATOR ASSY.

<u>NO.</u>	<u>PART NO.</u>	<u>PART NAME</u>	<u>QTY.</u>	<u>REMARKS</u>
1	7911002003	ROTOR ASSY.	1	INCLUDES ITEMS W/* GA-3.6HZ ONLY
1	7901002403	ROTOR ASSY.	1	INCLUDES ITEMS W/* GA-3.6H/GA3.6HA ONLY
1-1*		FIELD ASSY.	1	NOT SOLD SEPERATELY
1-2*	0601823207?	RECTIFIER, D3SB60	2	GA-3.6HZ ONLY
1-2*	0601823213	RECTIFIER, D3SB80	2	GA-3.6H & GA3.6HA ONLY
	0771706304	SURGE ABSORBER,	2	TNR15G431K GA-3.6HZ ONLY
	0601822637	SURGE ABSORBER,	2	TNR96431K GA-3.6H/GA3.6HA ONLY
1-3*	0071706304	BEARING, 6304 2RU NYCM	1	
2	7901017004	SET BOLT, ROTOR	1	
3	0801086104	SET WASHER, BEARING	1	
4	0040010000	SPRING WASHER	1	
5	7911344003	ARMATURE ASSY.	1	GA-3.6HZ ONLY
5	A5135000103	ARMATURE ASSY.	1	GA-3.6H & GA3.6HA ONLY
6	7901315502	END BRACKET	1	
7	7871315022	END BRACKET	1	
8	7875021513	GUIDE PANEL, AIR	1	GA-3.6HZ ONLY
8	7875021523	GUIDE PANEL, AIR	1	GA-3.6H & GA3.6HA ONLY
9	7871331003	COVER	1	
10	7901316004	SET BOLT, STATOR	4	
11	0040008000	WASHER, LOCK	4	
12	0041208000	WASHER, FLAT	4	
13	7871329514	GROMMET	1	
14	0601851760	CAP, 0B-13	1	
15	0013608020	HEX, HEAD BOLT	4	
15A	0040008000	SPRING WASHER	4	

GA-3.6H Series — CONTROL BOX ASSY. (GA-3HZ)

CONTROL BOX ASSY. (GA3.6HZ)



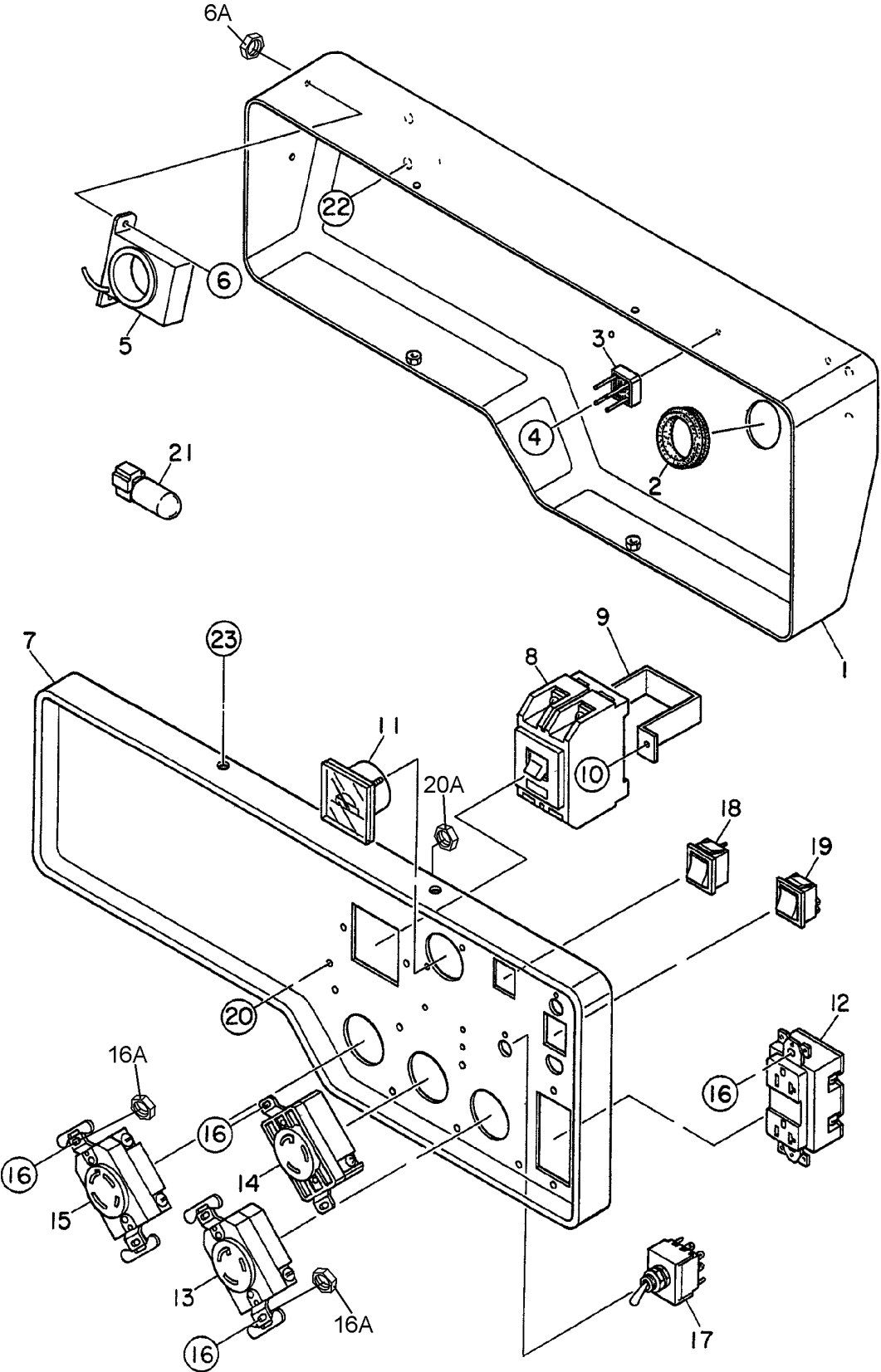
GA-3.6H Series — CONTROL BOX ASSY. (GA-3HZ)

CONTROL BOX ASSY. (GA3.6HZ)

<u>NO</u>	<u>PART NO</u>	<u>PART NAME</u>	<u>QTY.</u>	<u>REMARKS</u>
1	7911811403	CONTROL BOX	1	
2	0601850102	GROMMET, G3	1	
3	0601823853	SLOW DOWN UNIT, ND-80	1	
4	0027104010	MACHINE SCREW	2	
4A	0207004010	HEX. NUT	2	
5	7911821413	CONTROL PANEL	1	
6	7910501212	NAMEPLATE, N5431B	1	S/N 2975451 AND BELOW
6	7910501222	NAMEPLATE, N-5431C	1	S/N 2975452 AND ABOVE
7	0601800258	AC VOLTMETER, 8283:0-120V.0-240V	1	
8	0601805327	CIRCUIT BREAKER, KM-2:265V,13.5A	1	
9	4341817004	BRACKET, CIRCUIT BREAKER	1	
10	0027104010	MACHINE SCREW	2	
11	0601812597	RECEPTACLE, 5-20R, GF5352 (GFCI)	1	
12	0601811035	RECEPTACLE, L5-30R,125V,30A	1	
13	0601811032	RECEPTACLE, L6-20R, 250V,20A	1	
14	0027104010	MACHINE SCREW	6	
14A	0207004000	HEX. NUT	6	
15	0601830737	FULL POWER SWITCH, ET1330D12	1	
16	0601830727	IDLE CONTROL SWITCH, ET115A12	1	
17	0601830738	OPERATION SWITCH, ET210K12	1	
18	0601815109	GROUND TERMINAL, T-381	1	
19	0601823204	RECTIFIER, S5VB60	2	
20	0027103020	MACHINE SCREW	2	
21	0017105010	HEX. HEAD BOLT	4	
22	0805088004	RUBBER CUSHION	2	
23	0805088304	COLLAR	2	
24	0017106020	HEX. HEAD BOLT	2	
25	0017106016	HEX. HEAD BOLT	1	

GA-3.6H Series — CONTROL BOX ASSY. (GA-3H)

CONTROL BOX ASSY. (GA-3H)



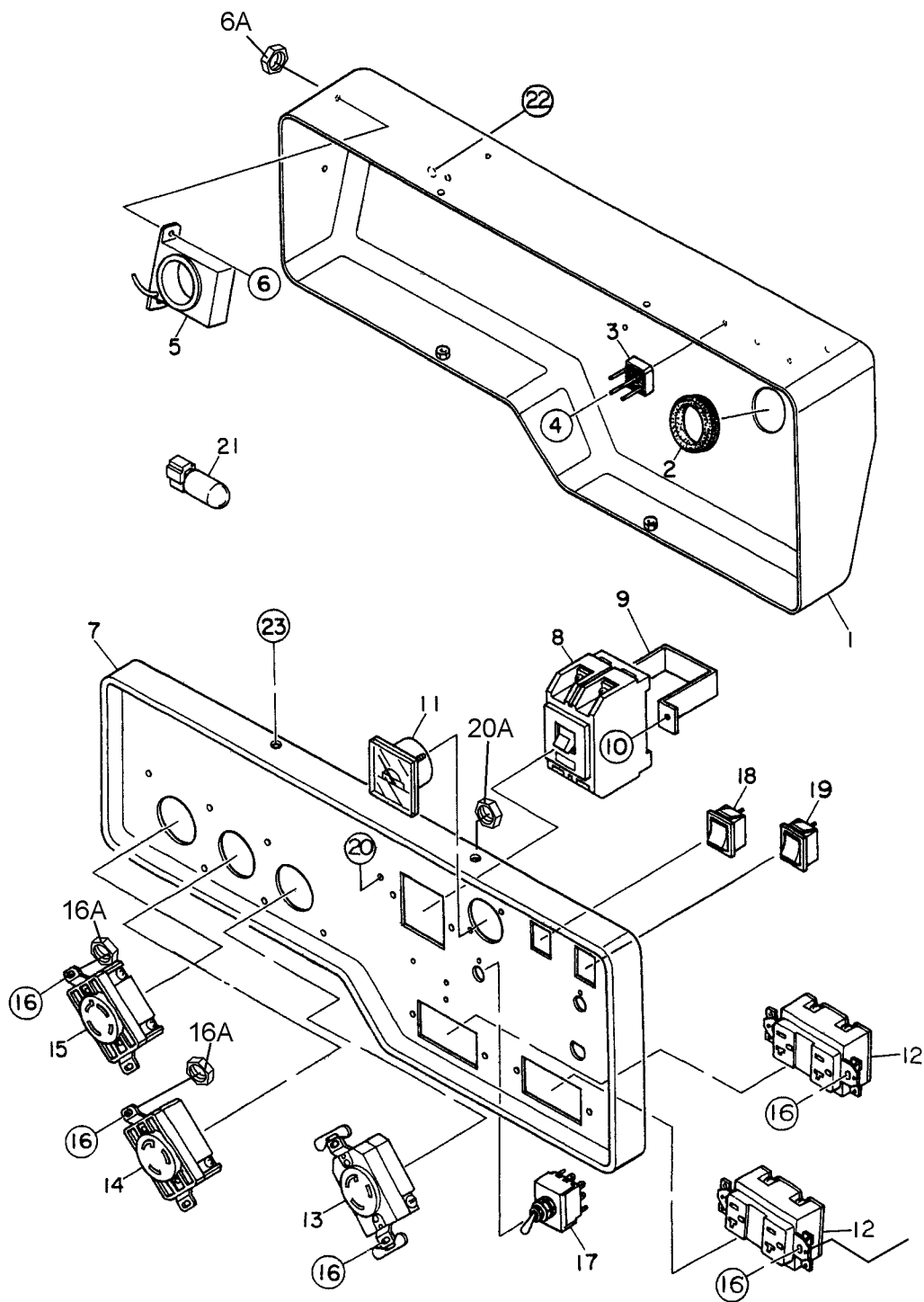
GA-3.6H Series — CONTROL BOX ASSY. (GA-3H)

CONTROL BOX ASSY. (GA-3H)

<u>NO.</u>	<u>PART NO.</u>	<u>PART NAME</u>	<u>QTY.</u>	<u>REMARKS</u>
1	A3214000003	CONTROL BOX	1	
2	0601850102	GROMMET, G-3	1	
3	0601823204	RECTIFIER, S5VB60	2	
4	0027103012	MACHINE SCREW	2	
5	0601823853	SLOW DOWN UNIT, ND-80	1	
6	0027104010	MACHINE SCREW	2	
6A	0207004000	HEX, NUT	2	
7	A3224000003	CONTROL PANEL	1	
8	0601804819	CIRCUIT BREAKER, KM-2 21A	1	
9	4341817004	BRACKET, CIRCUIT BREAKER	1	
10	0021004010	MACHINE SCREW	2	
11	0601806819	AC VOLTMETER, DE450-011 0~120/240V	1	
12	0601812598	RECEPTACLE, 5-20R	1	
13	0601812592	RECEPTACLE, L5-20R	1	
14	0601811035	RECEPTACLE, LS-30R	1	
15	0601812529	RECEPTACLE, L14-30R	1	
16	0021004010	MACHINE SCREW	8	
16A	0207004000	HEX, NUT	8	
17	0601830737	FULL POWER SWITCH, ET-330D12	1	
18	0601831620	IDLE CONTROL SWITCH, C1550WA	1	
19	0601831620	OPERATION SWITCH, C1550WA	1	
20	0021004015	MACHINE SCREW	1	
20A	0207004000	HEX, NUT	1	
21	A3262800004	CAPACITOR ASSY., VR1H102MHA, 50V 1000 μ F	1	
22	0017106016	HEX, HEAD BOLT	4	
23	0017105010	HEX, HEAD BOLT	4	

GA-3.6H Series — CONTROL BOX ASSY. (GA-3.6HA)

CONTROL BOX ASSY. (GA-3.6HA)



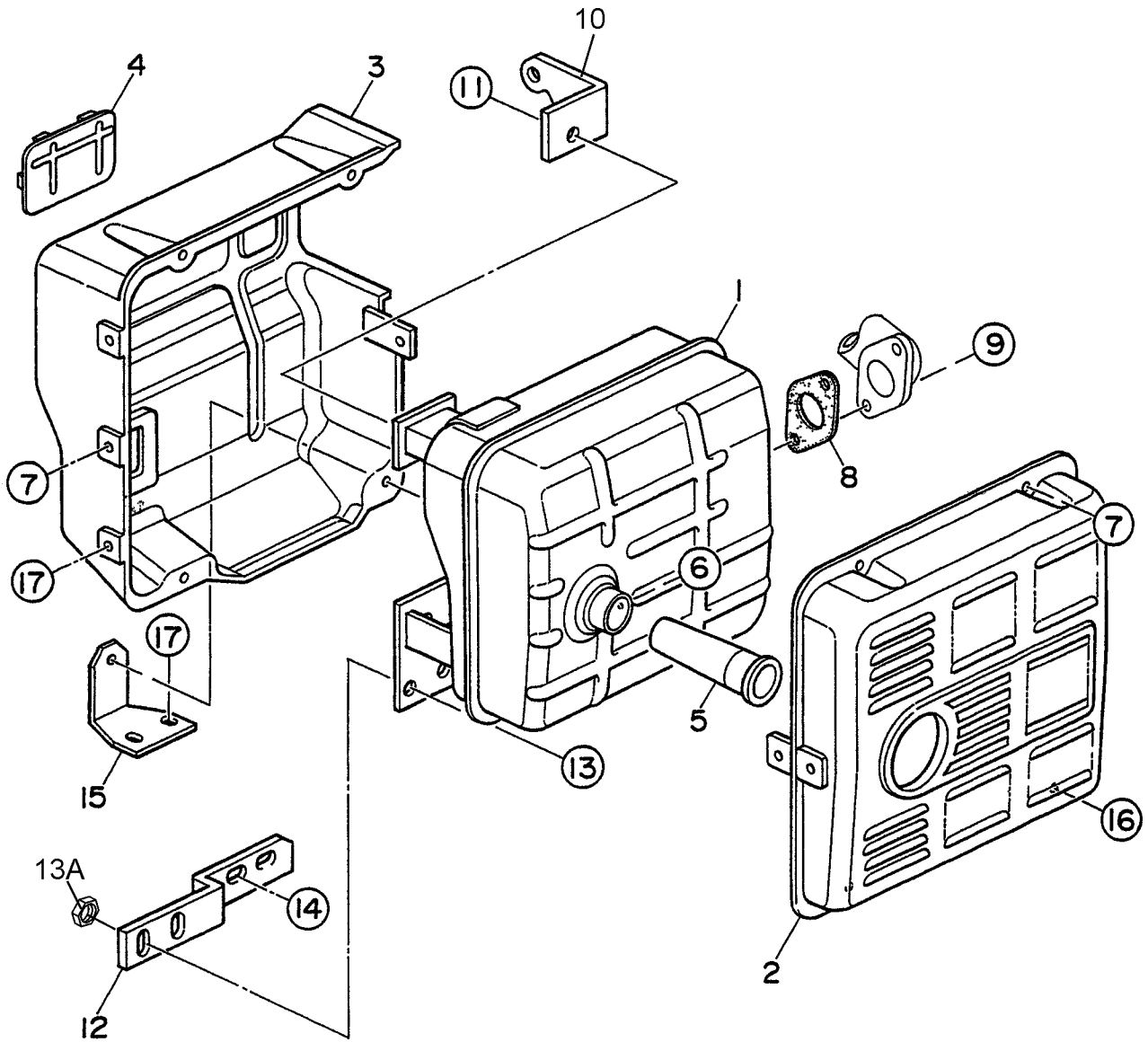
GA-3.6H Series — CONTROL BOX ASSY. (3.6HA)

CONTROL BOX ASSY. (3.6HA)

<u>NO.</u>	<u>PART NO.</u>	<u>PART NAME</u>	<u>QTY.</u>	<u>REMARKS</u>
1	A3214000103	CONTROL BOX	1	
2	0601850102	GROMMET, G-3	1	
3	0601823204	RECTIFIER, S5VB60	2	
4	0027103012	MACHINE SCREW	2	
5	0601823853	SLOW DOWN UNIT, ND-80	1	
6	0027104010	MACHINE SCREW	2	
6A	0207004000	HEX, NUT	2	
7	A3224000103	CONTROL PANEL	1	
8	0601805327	CIRCUIT BREAKER, KM-2 13.5A	1	
9	4341817004	BRACKET, CIRCUIT BREAKER	1	
10	0021004010	MACHINE SCREW	2	
11	0601806819	AC VOLTMETER, DE450-011 0~120/240V	1	
12	0601812598	RECEPTACLE, 5-20R	2	
13	0601812592	RECEPTACLE, L5-20R	1	
14	0601811035	RECEPTACLE, LS-30R	1	
15	0601814010	RECEPTACLE, L14-20R	1	
16	0021004010	MACHINE SCREW	8	
16A	0207004000	HEX, NUT	8	
17	0601830737	FULL POWER SWITCH, ET-330D12	1	
18	0601831620	IDLE CONTROL SWITCH, C1550WA	1	
19	0601831620	OPERATION SWITCH, C1550WA	1	
20	0021004015	MACHINE SCREW	1	
20A	0207004000	HEX, NUT	1	
21	A3262800004	CAPACITOR ASSY., VR1H102MHA, 50V 1000 μ F	1	
22	0017106016	HEX, HEAD BOLT	4	
23	0017105010	HEX, HEAD BOLT	4	

GA-3.6H Series— MUFFLER ASSY.

MUFFLER ASSY.



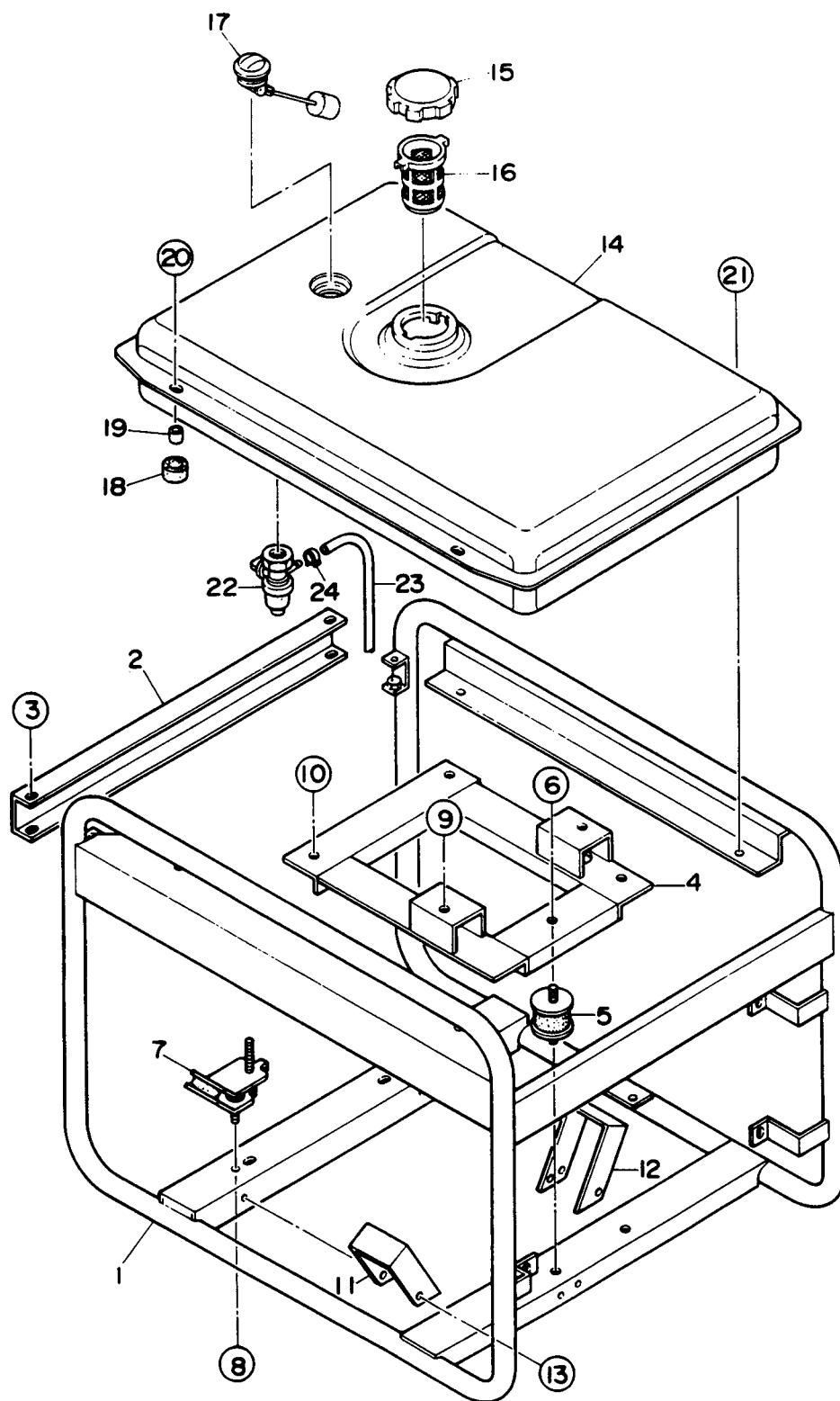
GA-3.6H Series— MUFFLER ASSY.

MUFFLER ASSY.

<u>NO</u>	<u>PART NO</u>	<u>PART NAME</u>	<u>QTY.</u>	<u>REMARKS</u>
1	7912310003	MUFFLER	1	
2	18320ZB4000	PROTECTOR	1	REPLACES P/N 0602302001
3	18325ZB4000	PROTECTOR	1	REPLACES P/N 0602302002
4	18329ZB4000	SEAL	2	REPLACES P/N 0602302003
5	18355ZB4630	ARRESTOR, SPARK	1	REPLACES P/N 0602313060
6	90183671003	TAPPING SCREW	1	REPLACES P/N 0602322060
7	0017106012	BOLT HEX HEAD	5	
8	18333ZB4800	GASKET	1	REPLACES P/N 0602320175
9	957000802000	HEX HEAD BOLT	2	REPLACES P/N 0602322061
10	7915461004	BRACKET	1	
11	0017108020	BOLT HEX HEAD	1	
12	7915460004	BRACKET	1	
13	0017108025	BOLT HEX HEAD	2	
13A	0207008000	HEX NUT	2	
14	0017108020	BOLT HEX HEAD	1	
15	7915469004	BRACKET	1	
16	0017106020	BOLT HEX HEAD	1	
17	0017106012	BOLT HEX HEAD	4	

GA-3.6H Series — PIPE FRAME ASSY. (GA-3HZ)

PIPE FRAME ASSY. (GA3.6HZ)



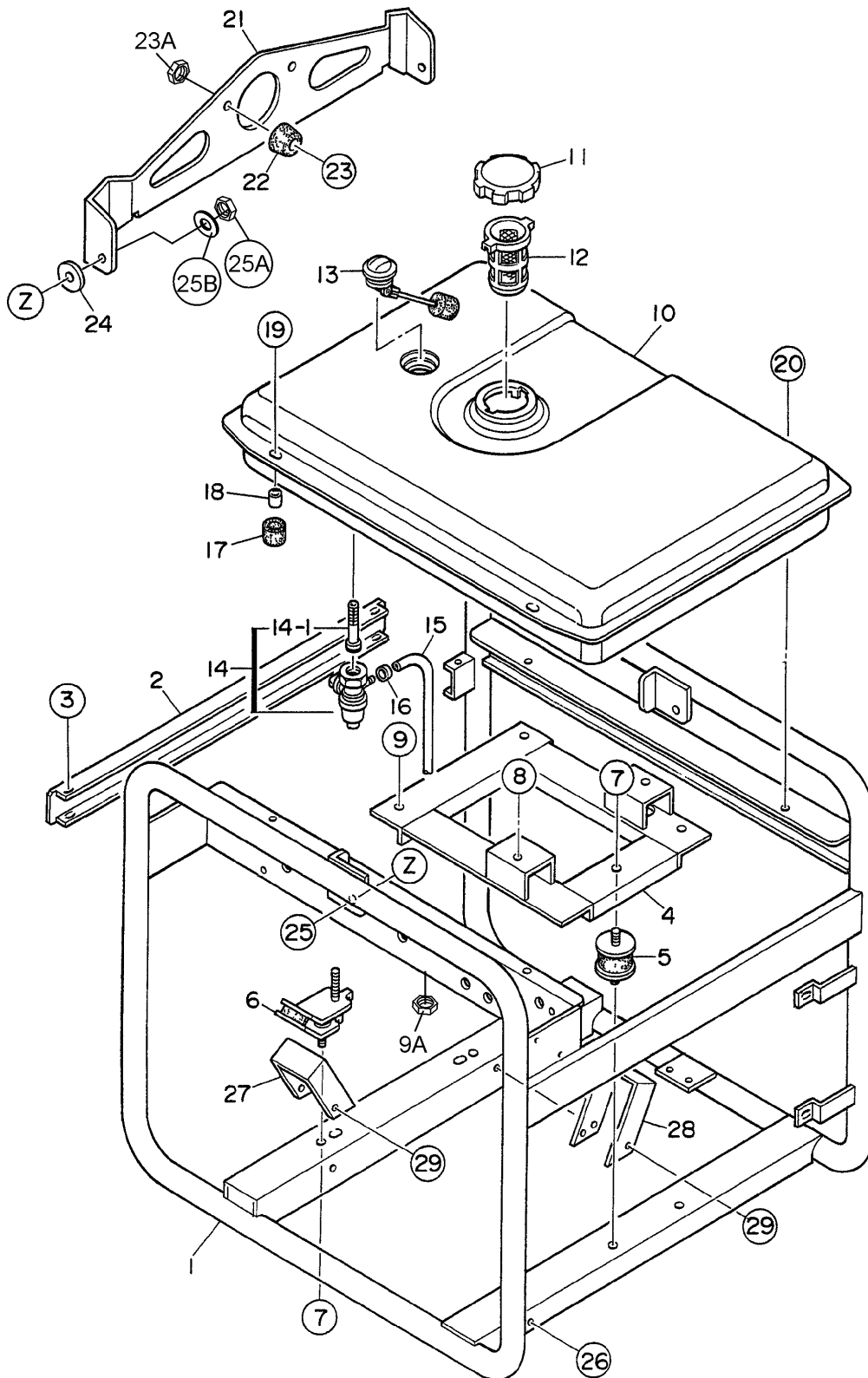
GA-3.6H Series — PIPE FRAME ASSY. (GA-3HZ)

PIPE FRAME ASSY. (GA3.6HZ)

<u>NO</u>	<u>PART NO</u>	<u>PART NAME</u>	<u>QTY.</u>	<u>REMARKS</u>
1	7915412002	PIPE FRAME	1	
2	7915415004	BRACKET	1	
3	0017106016	HEX. HEAD BOLT	4	
4	7915443003	BASE	1	
5	7895419004	RUBBER SUSPENSION	2	
6	0207008000	HEX. NUT	4	
7	1725419214	RUBBER SUSPENSION	2	
8	0207008000	HEX. NUT	4	
9	0017108040	HEX. HEAD BOLT	2	
10	0017108040	HEX. HEAD BOLT	2	
	0207008000	HEX. NUT	2	
11	7915455103	COVER	1	
12	7915455003	COVER	1	
13	0017106016	HEX. HEAD BOLT	6	
14	7905512002	FUEL TANK	1	
15	0810106004	CAP,FUEL TANK	1	
16	0810107103	FUEL FILTER	1	
17	0602125031	FUEL GAUGE	1	
18	7855525514	RUBBER CUSHION	2	
19	7855525604	GCOLLAR	2	
20	0017108030	HEX. HEAD BOLT	2	
21	0017108020	HEX. HEAD BOLT	2	
22	0605511087	FUEL COCK	1	
23	0605513140	HOSE	1	
24	0605515096	HOSE BAND	2	

GA-3.6H Series— PIPE FRAME ASSY. (GA-3.6H/GA3.6HA)

PIPE FRAME ASSY. (GA3.6H/GA3.6HA)



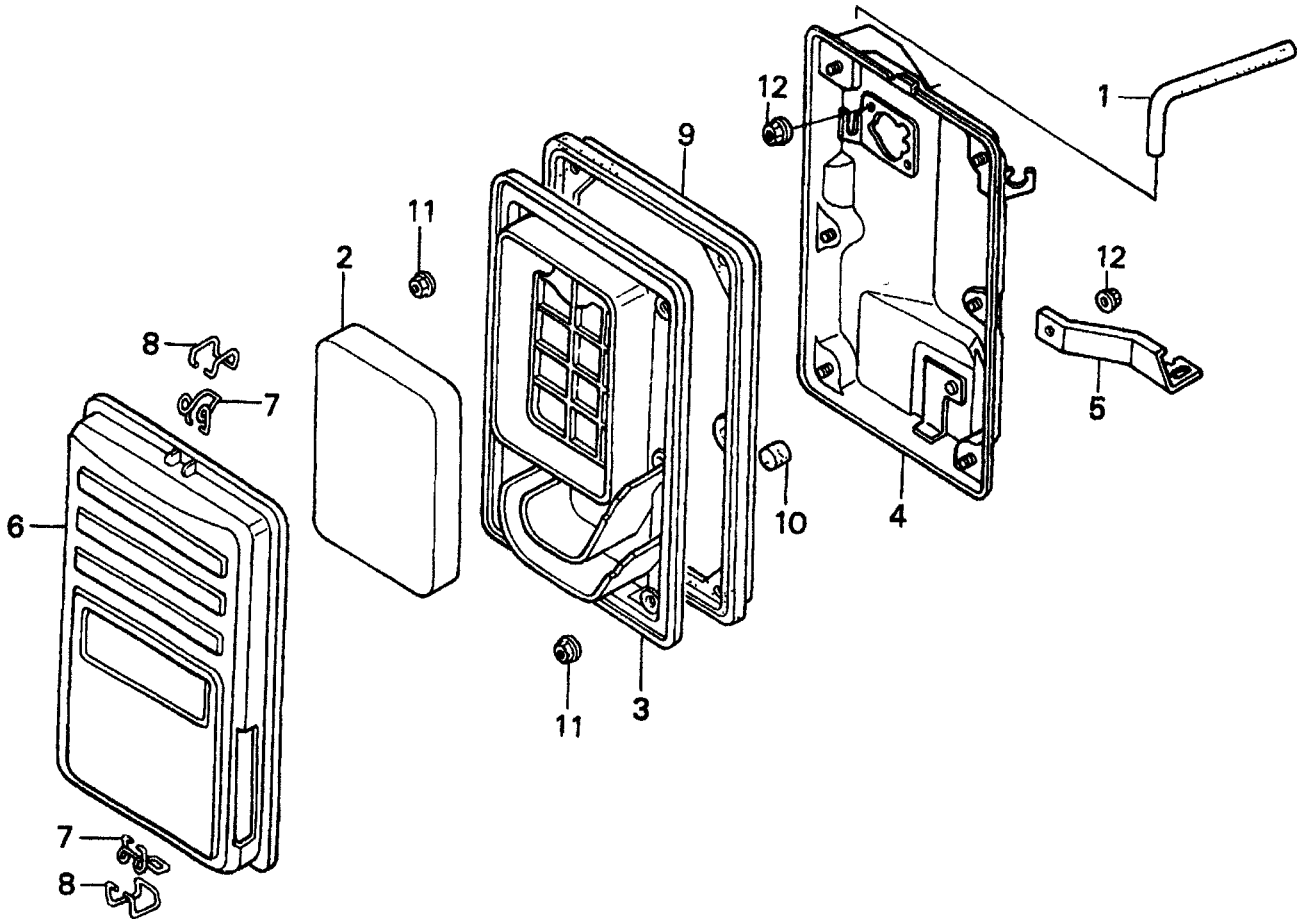
GA-3.6H Series— PIPE FRAME ASSY. (GA-3.6H/GA3.6HA)

PIPE FRAME ASSY. (GA3.6H/GA3.6HA)

<u>NO.</u>	<u>PART NO.</u>	<u>PART NAME</u>	<u>QTY.</u>	<u>REMARKS</u>
1	A3417000002	PIPE FRAME	1	GA-3.6H ONLY
1	A3417000202	PIPE FRAME	1	GA-3.6HA ONLY
2	A3417100004	BRACKET	1	
3	0017106016	HEX, HEAD BOLT	4	
4	7915443003	BASE	1	
5	7895419004	RUBBER SUSPENSION	2	
6	1725419214	RUBBER SUSPENSION	2	
7	0207008000	HEX, NUT	8	
8	0017108030	HEX, HEAD BOLT	2	
9	0017108040	HEX, HEAD BOLT	2	
9A	0207008000	HEX, NUT	2	
10	7905512002	FUEL TANK	1	
11	A9924800014	CAP, FUEL TANK	1	
12	A9924800004	FUEL FILTER	1	
13	0602125034	FUEL GAUGE	1	
14	16950ZB4015	FUEL STRAINER	1	REPLACES P/N 0605510068
14-1	16952ZB4005	SCREEN SET, HONDA	1	REPLACES P/N 0605510069
15	950014521040	HOSE, HONDA	1	REPLACES P/N 0605513146
16	9500202080	HOSE BAND, HONDA	2	REPLACES P/N 0605515178
17	7855525514	RUBBER CUSHION	2	
18	7855525604	COLLAR	2	
19	011208030	BOLT HEX HEAD	2	
20	0017108020	BOLT HEX HEAD	2	
21	A9117200103	HANGER	1	
22	0601850097	STOPPER, 30029	1	
23	0021008025	MACHINE SCREW	1	
23A	0207008000	HEX, NUT	1	
24	A931110004	PLASTIC WASHER	2	GA-3.6H
24	0601851116	PLASTIC WASHER	2	GA-3.6HA
25	0011308025	HEX, HEAD BOLT	2	
25A	0037908000	HEX, NUT	2	
25B	0042108000	PLAIN WASHER	2	
26	0019206016	HEX, HEAD BOLT	1	
27	7915455103	COVER	1	
28	7855455003	COVER	1	
29	0017106016	HEX, HEAD BOLT	6	

HONDA GX240K1EDN2 ENGINE — AIR CLEANER ASSY.

AIR CLEANER ASSY.



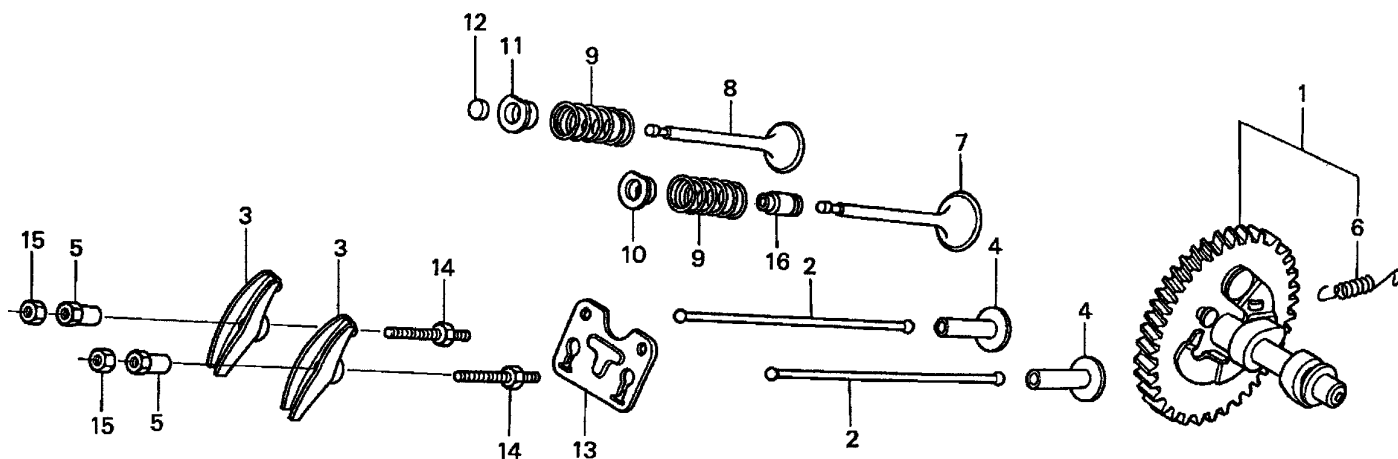
HONDA GX240K1EDN2 ENGINE — AIR CLEANER ASSY.

AIR CLEANER ASSY.

<u>NO.</u>	<u>PART NO.</u>	<u>PART NAME</u>	<u>QTY.</u>	<u>REMARKS</u>
1	15721ZB4000	TUBE BREATHER	1	
2	17211899000	ELEMENT, AIR CLEANER	1	
3	17212ZB4003	SEPARATOR, AIR CLEANER	1	
4	17220ZB4003	HOUSING, AIR CLEANER	1	
5	17222ZC2000	STAY, AIR CLEANER	1	
6	17231899000	COVER, AIR CLEANER	1	
7	17235899000	CLIP A, AIR CLEANER WIRE	2	
8	17236899000	CLIP B, AIR CLEANER WIRE	2	
9	17252899000	SEAL, AIR CLEANER	1	
10	17367413690	FILTER, DRAIN TUBE	1	
11	9405005000	NUT, FLANGE (5MM)	6	
12	9405006000	NUT, FLANGE (6MM)	3	

HONDA GX240K1EDN2 ENGINE — CAMSHAFT ASSY.

CAMSHAFT ASSY.



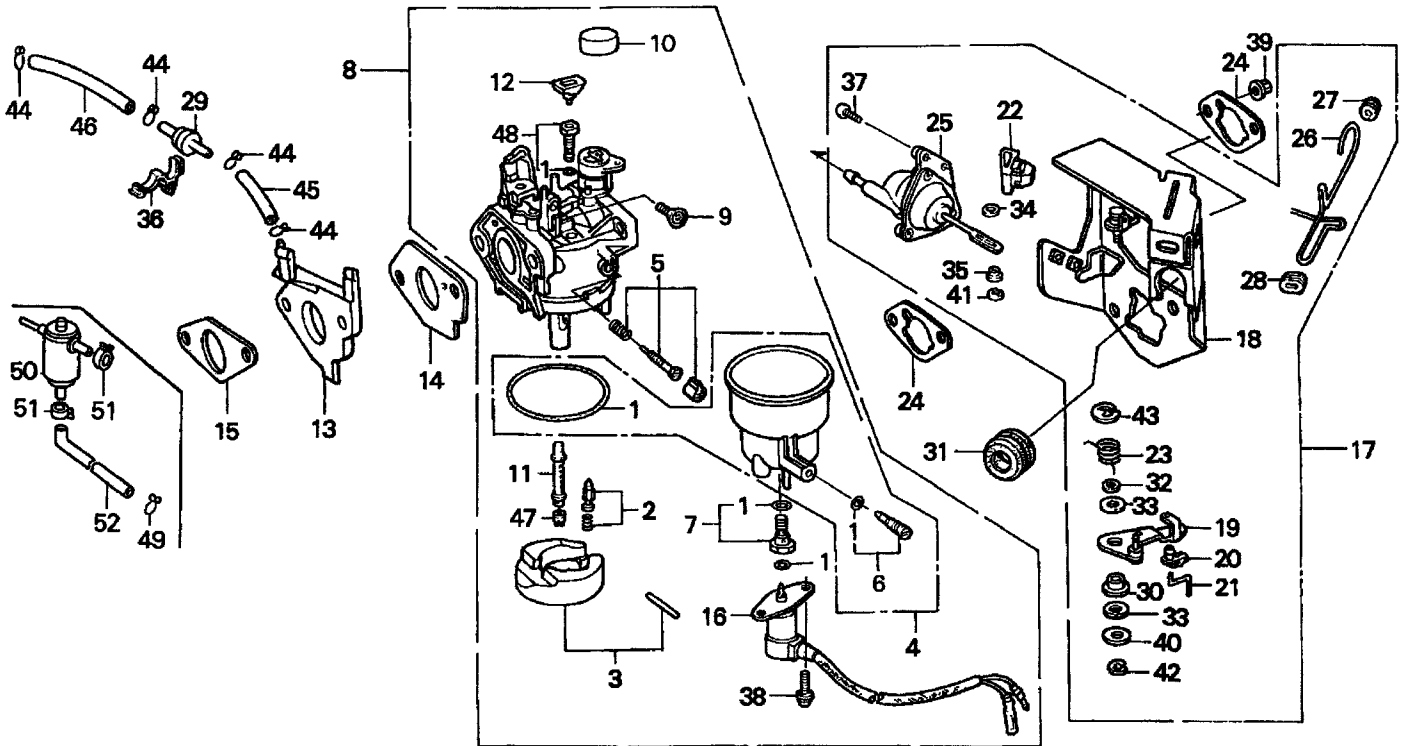
HONDA GX240K1EDN2 ENGINE — CAMSHAFT ASSY.

CAMSHAFT ASSY.

<u>NO.</u>	<u>PART NO.</u>	<u>PART NAME</u>	<u>QTY.</u>	<u>REMARKS</u>
1	14100ZE2W00	CAMSHAFT ASSY.	1	INCLUDES ITEMS/W* USE UP TO S/N 3620688
1	14100ZE2W01	CAMSHAFT ASSY.	1	INCLUDES ITEMS/W* USE FROM S/N 3620689
1	14100ZE2306	CAMSHAFT ASSY.	1	INCLUDES ITEMS/W* USE UP TO S/N 4730487
2	14410ZE2013	ROD, PUSH	2	
3	14431ZE2010	ARM, VALVE ROCKER	2	
4	14441ZE2000	LIFTER, VALVE	2	
5	14451ZE1013	PIVOT, ROCKER ARM	2	
6*	14568ZE1000	SPRING, WEIGHT RETURN	1	
7	14711ZE2000	VALVE, IN.	1	
8	14721ZE2000	VALVE, EX.	1	
9	14751ZE2003	SPRING, VALVE	2	
10	14771ZE2000	RETAINER, IN. VALVE SPRING	1	
11	14773ZE2000	RETAINER, EX. VALVE SPRING	1	
12	14781ZE2000	ROTATOR, VALVE	1	
13	14791ZE2010	PLATE, PUSH ROD GUIDE	1	
14	90012ZE0010	BOLT, PIVOT (8MM)	2	
15	90206ZE1000	NUT, PIVOT ADJ.	2	
16	12209ZE8003	SEAL, VALVE STEM	1	USE FROM S/N 3620689

HONDA GX240K1EDN2 ENGINE — CARBURETOR ASSY.

CARBURETOR ASSY.



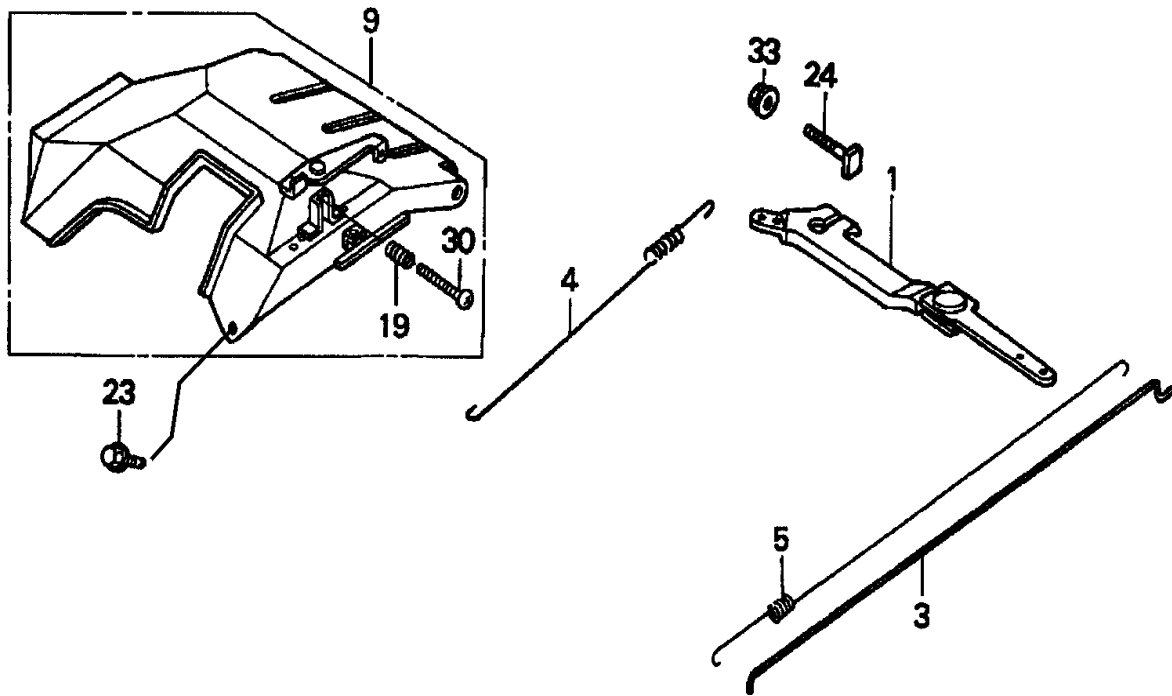
HONDA GX240K1EDN2 ENGINE — CARBURETOR ASSY.

CARBURETOR ASSY.

<u>NO.</u>	<u>PART NO.</u>	<u>PART NAME</u>	<u>QTY.</u>	<u>REMARKS</u>
1*	16010ZE3701	GASKET SET	1	
2*	16011ZA0931	VALVE SET, FLOAT	1	
3*	16013ZA0931	FLOAT SET	1	
4*	16015ZA0931	CHAMBER SET, FLOAT	1	
5*	16016ZH7W01	SCREW SET	1	
6*	16024124760	SCREW SET, DRAIN	1	
7*	16028ZA0931	SCREW SET B	1	
8	16100ZE2F01	CARBURETOR ASSY. (BE72C)	1	INCLUDES ITEMS W/*
9*	16124ZE0005	SCREW, THROTTLE STOP	1	
10*	16148141881	CAP, CHOKE LEVER DUST	1	
11*	16166ZE2015	NOZZLE, MAIN	1	
12*	16172ZE3W10	COLLAR, SET	1	
13	16211ZE2700	INSULATOR, CARBURETOR	1	
14	16221ZA0800	GASKET, CARBURETOR	1	
15	16223ZA0800	GASKET, INSULATOR	1	
16*	16230ZE3701	VALVE ASSY., SOLENOID	1	
17	16260ZE2722	STAY ASSY., MANUAL CHOKE	1	INCLUDES ITEMS W/#
18#	16261ZE2702	STAY, SOLENOID	1	
19#	16262ZE2711	LEVER, CHOKE	1	
20#	16263ZA0000	JOINT, ROD	1	
21#	16264ZE2701	ROD, CHOKE	1	
22#	16265ZE2721	STOPPER, CHOKE ROD	1	
23#	16268ZE2721	SPRING, MANUAL CHOKE	1	
24	16269ZA0800	GASKET, AIR CLEANER	2	
25#	16400ZE2703	DIAPHRAGM ASSY.	1	
26#	16611ZE2711	ROD, CHOKE CONTROL	1	
27#	16613893000	GROMMET, CHOKE ROD	1	
28#	16615893000	GUIDE, CHOKE ROD	1	
29	36135ZF6D41	VALVE, DASHPOT CHECK	1	
30#	53149964003	BUSH, ARM PIVOT	1	
31	88911MJ3000	GROMMET, FENDER	1	
32#	90431ZE2700	WASHER, CHOKE LEVER	1	
33#	90432ZE2700	SEAL, CHOKE LEVER	2	
34#	90433ZE2700	WASHER, THRUST (2.7X8)	1	
35#	90434ZE2700	COLLAR, LEVER	1	
36	90650SD9003	CLIP, WIRE HARNESS	1	
37#	93500050120A	SCREW, PAN (5X12)	2	
38	938920501208	SCREW, WASHER (5X12)	2	
39	9405006000	NUT, FLANGE (6MM)	2	
40#	9410305000	WASHER, PLAIN (5MM)	1	
41#	9454002010	E-RING (2MM)	1	
42#	9454004010	E-RING (4MM)	1	
43#	9454007010	E-RING (7MM)	1	
44	9500202070	CLIP, TUBE (B7)	4	
45	950053500810M	BULK HOSE, VACUUM (3.5X8000) (3.5X75)	1	
46	950053500810M	BULK HOSE, VACUUM (3.5X8000) (3.5X130)	1	
47	99101ZH80750	JET, MAIN (#75) (OPTIONAL)	1	
47	99101ZH80780	JET, MAIN (#78) (OPTIONAL)	1	
47*	99101ZH80800	JET, MAIN (#80)	1	
48*	99204ZE00450	JET SET, PILOT (#45)	1	

HONDA GX240K1EDN2 ENGINE — CONTROL ASSY.

CONTROL ASSY.



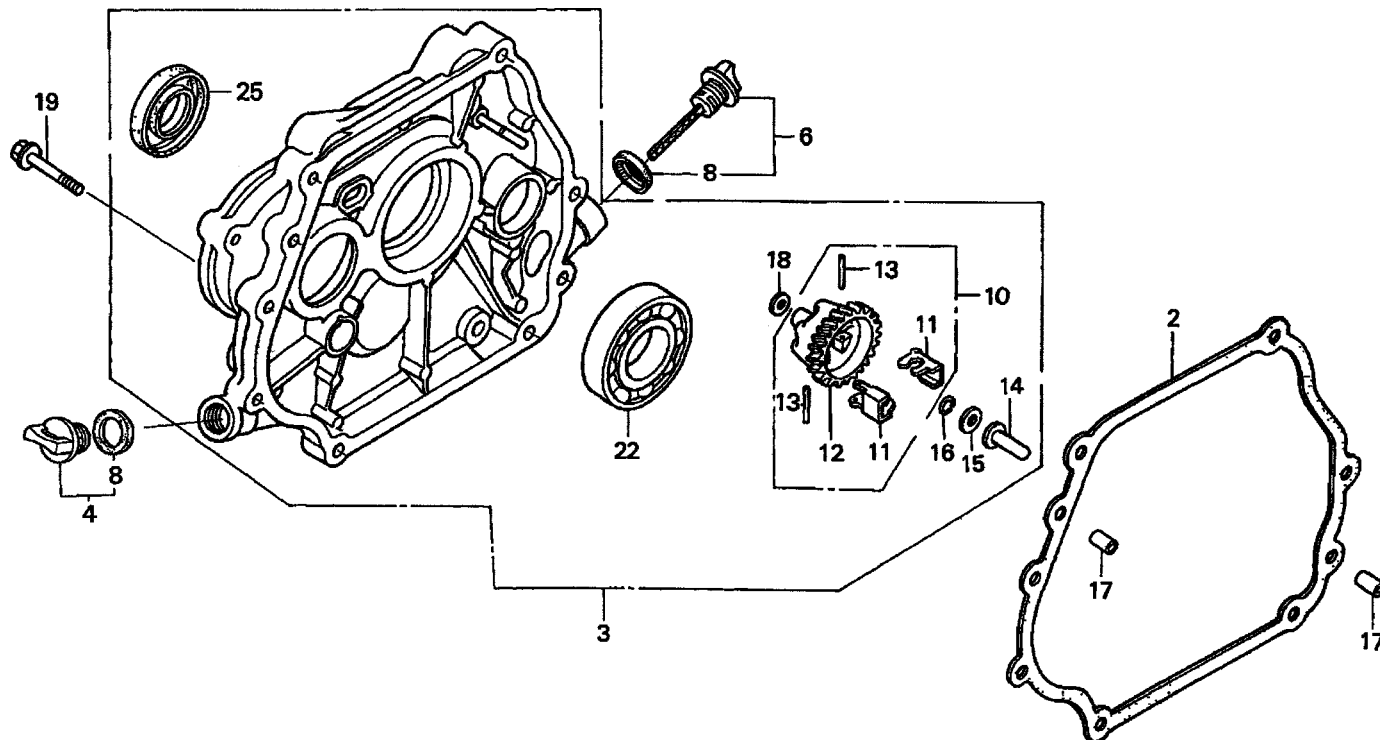
HONDA GX240K1EDN2 ENGINE — CONTROL ASSY.

CONTROL ASSY.

<u>NO.</u>	<u>PART NO.</u>	<u>PART NAME</u>	<u>QTY.</u>	<u>REMARKS</u>
1	16550ZE2700	ARM, GOVERNOR	1	
3	16555ZE2000	ROD, GOVERNOR	1	
4	16561ZE2000	SPRING, GOVERNOR	1	
5	16562ZE2700	SPRING, THROTTLE RETURN	1	
9	16570ZE2701	CONTROL ASSY.	1	... INCLUDES ITEMS W/*
19*	16584883300	SPRING, CONTROL ADJUSTING	1	
23	90013883000	BOLT, FLANGE (6X12) (CT200)	2	
24	90015ZE5010	BOLT, GOVERNOR ARM	1	
30*	93500050350A	SCREW, PAN (5X35)	1	
33	9405006000	NUT, FLANGE (6MM)	1	

HONDA GX240K1EDN2 ENGINE — CRANKCASE COVER ASSY.

CRANKCASE COVER ASSY.



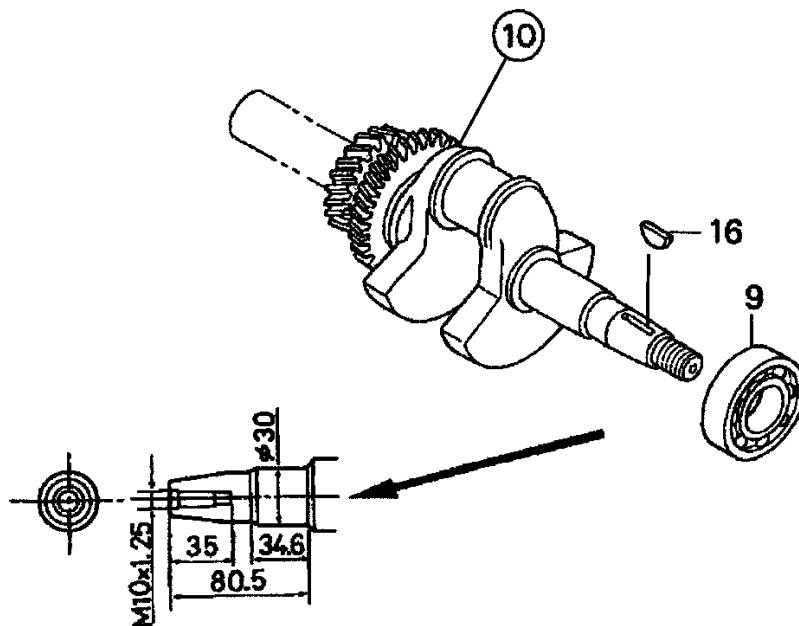
HONDA GX240K1EDN2 ENGINE — CRANKCASE COVER ASSY.

CRANKCASE COVER ASSY.

<u>NO.</u>	<u>PART NO.</u>	<u>PART NAME</u>	<u>QTY.</u>	<u>REMARKS</u>
2	11381ZE2801	GASKET, CASE COVER	1	
3	11300ZE2000	COVER ASSY., CRANKCASE (S-TYPE)	1	INCLUDES ITEMS W/* USE UP TO S/N 4211335
3	11300ZE2020	COVER ASSY., CRANKCASE	1	INCLUDES ITEMS W/*
4	15600ZG4003	CAP ASSY., OIL FILLER	1	INCLUDES ITEMS W/%
6	15600735003	CAP ASSY., OIL FILLER	1	INCLUDES ITEMS W/+
8%+	15625ZE1003	GASKET, OIL FILLER CAP	2	
10*	16510ZE2000	GOVERNOR ASSY.	1	INCLUDES ITEMS W/#
11*#	16511ZE2000	WEIGHT, GOVERNOR	2	
12*#	16512ZE2000	HOLDER, GOVERNOR WEIGHT	1	
13*#	16513ZE2000	PIN, GOVERNOR WEIGHT	2	
14*	16531ZE2000	SLIDER, GOVERNOR	1	USE UP TO S/N 4211335
14*	16531Z0A000	SLIDER, GOVERNOR	1	
15*	90473147000	WASHER, (6X6)	1	USE UP FROM S/N 4211336
16*	90602ZE1000	CLIP, GOVERNOR HOLDER	1	
17	90701HC4000	PIN, DOWEL (8X12)	2	
18*	9410106800	WASHER, PLAIN (6MM)	1	
19	957010803500	BOLT, FLANGE (8X35)	7	
22*	961006202000	BEARING, RADIAL BALL (6206)	1	
25*	92102ZE3004	OIL SEAL (35X52X8)	1	

HONDA GX240K1EDN2 ENGINE — CRANKSHAFT ASSY.

CRANKSHAFT ASSY.



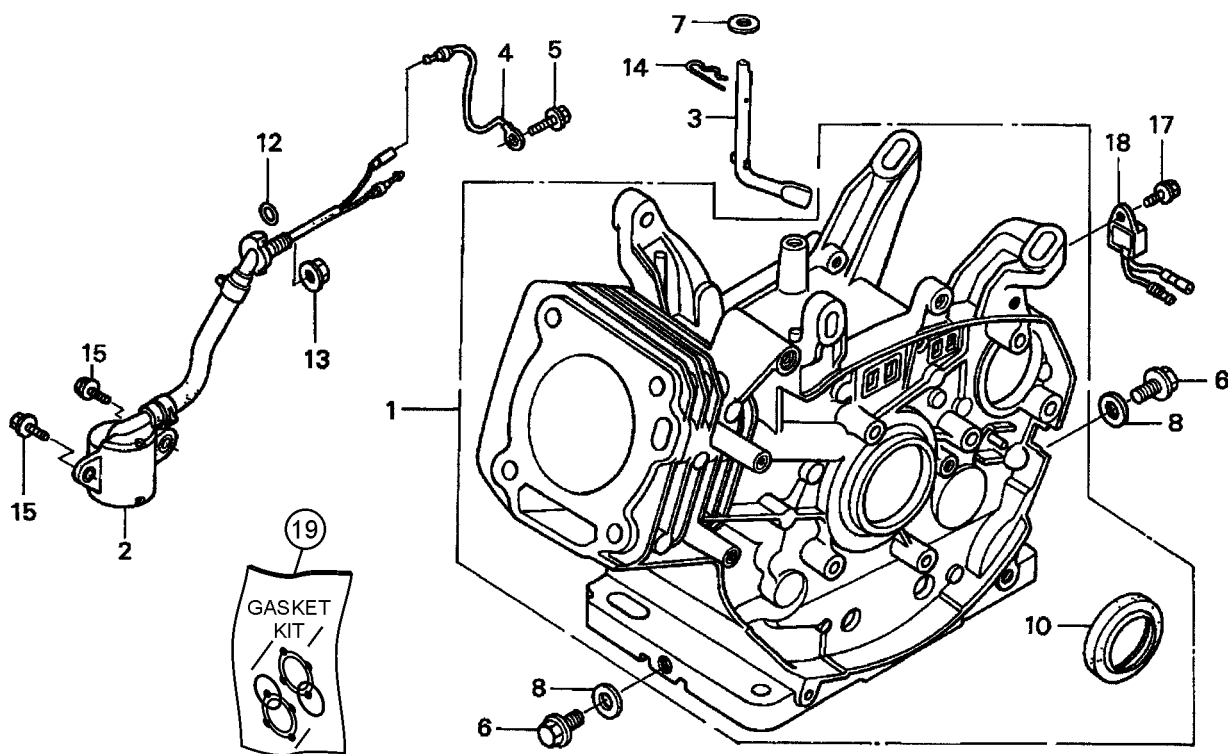
HONDA GX240K1EDN2 ENGINE — CRANKSHAFT ASSY.

CRANKSHAFT ASSY.

<u>NO.</u>	<u>PART NO.</u>	<u>PART NAME</u>	<u>QTY.</u>	<u>REMARKS</u>
9	961006206000	BEARING, RADIAL BALL (6206)	1	
10	13310ZE2701	CRANKSHAFT (E-TYPE)	1	
16	90741ZE2000	KEY, SPECIAL WOODRUFF (25X18)	1	

HONDA GX240K1EDN2 ENGINE — CYLINDER BARREL ASSY.

CYLINDER BARREL ASSY.



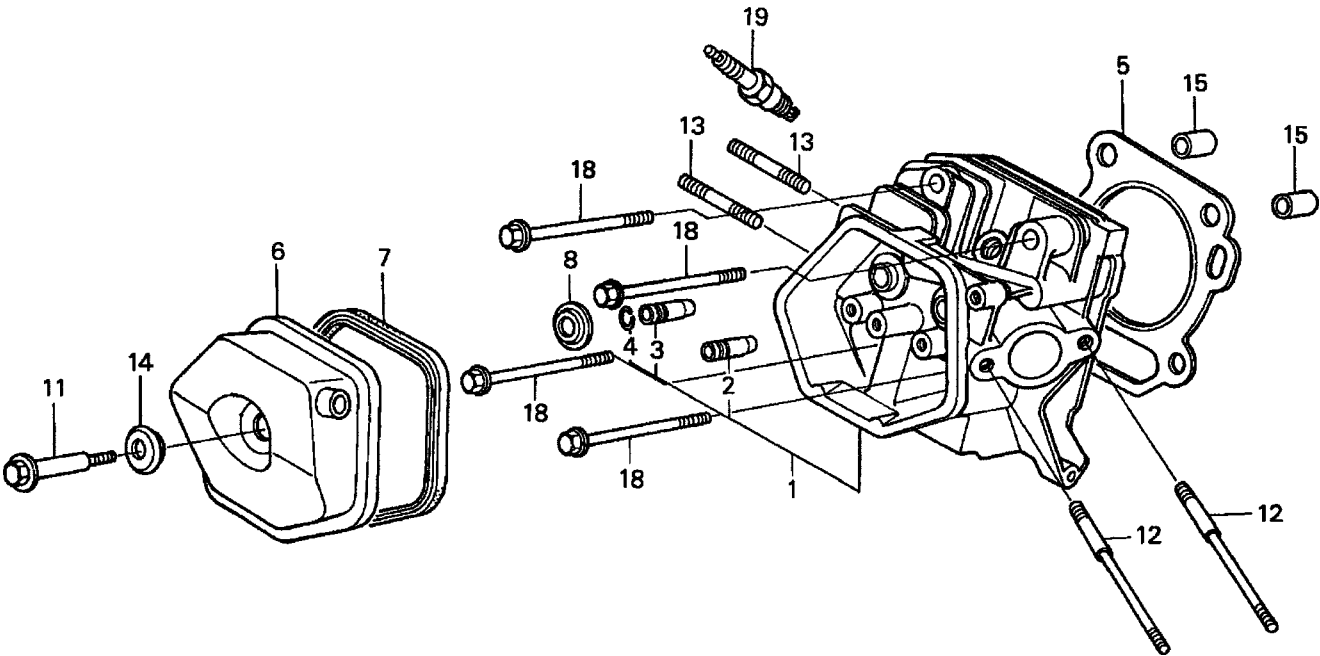
HONDA GX240K1EDN2 ENGINE — CYLINDER BARREL ASSY.

CYLINDER BARREL ASSY.

<u>NO.</u>	<u>PART NO.</u>	<u>PART NAME</u>	<u>QTY.</u>	<u>REMARKS</u>
1	12000ZE2815	CYLINDER ASSY. (ALERT)	1	INCLUDES ITEMS W/*
2	15510ZE2043	SWITCH ASSY., OIL LEVEL	1	
3	16541ZE2010	SHAFT, GOVERNOR ARM	1	
4	31161ZE2000	WIRE, GROUND	1	
5	90013883000	BOLT, FLANGE (6X12) (CT200)	1	
6	90131896650	BOLT, DRAIN PLUG	2	
7	90446KE1000	WASHER (8.2X17X0.8)	1	
8	9410912000	WASHER DRAIN PLUG 12 MM	1	
10*	91201890003	OIL SEAL (30X46X8)	1	
12	91353671003	O-RING (13.5X1.5) (ARAI)	1	
13	9405010000	NUT, FLANGE (10 MM)	1	
14	9425110000	PIN, LOCK (10 MM)	1	
15	957010601200	BOLT FLANGE (6X12)	2	
17	90013883000	BOLT FLANGE (6X12)	2	USE FROM ENGINE S/N 3684579
18	34150ZH7003	ALERT UNIT, OIL	1	USE FROM ENGINE S/N 3684579
19	06111ZE2408	GASKET KIT	1	USE UP TO S/N 4045100

HONDA GX240K1EDN2 ENGINE — CYLINDER HEAD ASSY.

CYLINDER HEAD ASSY.



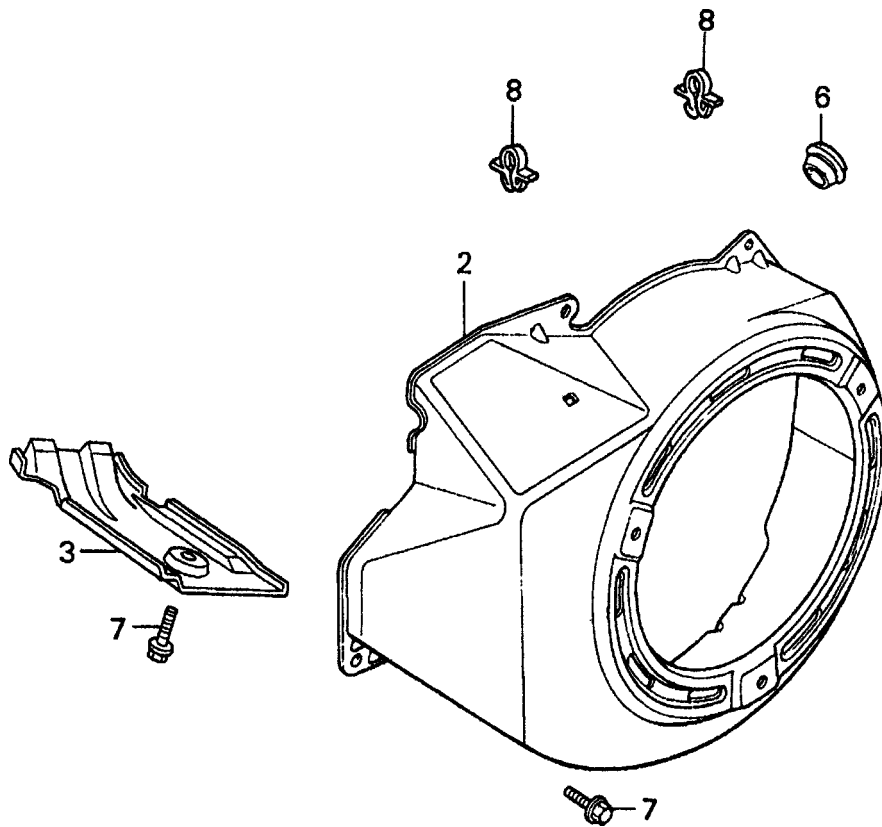
HONDA GX240K1EDN2 ENGINE — CYLINDER HEAD ASSY.

CYLINDER HEAD ASSY.

<u>NO.</u>	<u>PART NO.</u>	<u>PART NAME</u>	<u>QTY.</u>	<u>REMARKS</u>
1	12200ZH9405	CYLINDER HEAD	1	INCLUDES ITEMS W/*
2	12204ZE2306	GUIDE, VALVE (OS) (OPTIONAL)	1	
3*	12205ZE2305	GUIDE, EX. VALVE (OS) (OPTIONAL)	1	
4*	12216ZE2300	CLIP, VALVE GUIDE	1	
5	12251ZE2800	GASKET, CYLINDER HEAD	1	
6	12310ZE2020	COVER, HEAD	1	
8	14775ZE2010	SEAT, VALVE SPRING	1	
11	90014ZE2000	BOLT, HEAD COVER	1	
12	90042ZE2700	BOLT, STUD (8X98)	2	
13	90047ZE2000	BOLT, STUD	2	USE UP TO S/N 3844352
13	92900080320E	BOLT, STUD (8X32)	2	
14	90441ZE2010	WASHER, HEAD COVER	1	
15	9430112200	PIN A, DOWEL (12X20)	2	
18	957011008000	BOLT, FLANGE (10X80)	4	
19	9807955846	SPARK PLUG (BPR5ES) (NGK) (OPTIONAL)	1	
19	9807955855	SPARK PLUG (W16EPR-U) (DENSO)	1	

HONDA GX240K1EDN2 ENGINE — FAN COVER ASSY.

FAN COVER ASSY.



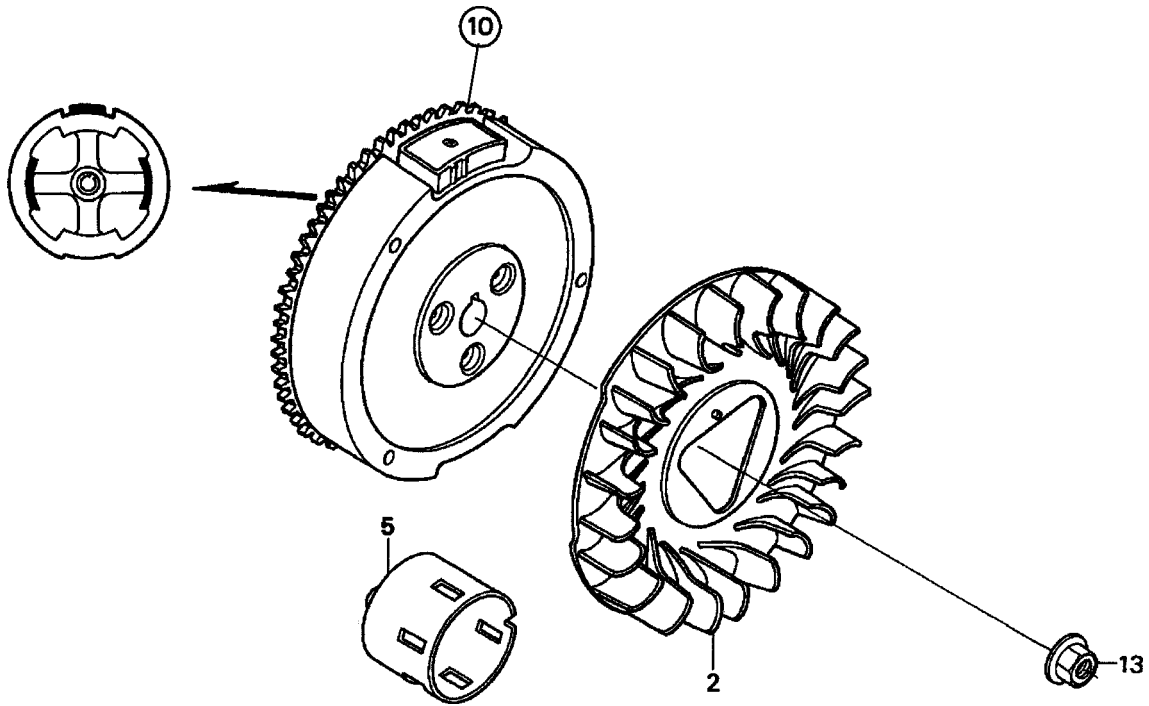
HONDA GX240K1EDN2 ENGINE — FAN COVER ASSY.

FAN COVER ASSY.

<u>NO.</u>	<u>PART NO.</u>	<u>PART NAME</u>	<u>QTY.</u>	<u>REMARKS</u>
2	19610ZE2700ZD	COVER, FAN *NH1* (BLACK)	1	
3	19631ZE2D00	SHROUD	1	
6	81329567020	GROMMET, DRAIN HOLE	1	
7	90013883000	BOLT, FLANGE (6X12) (CT200)	6	
8	90654SA4003	CLIP, WIRE HARNESS (6MM) (WHITE)	2	

HONDA GX240K1EDN2 ENGINE — FLYWHEEL ASSY.

FLYWHEEL ASSY.



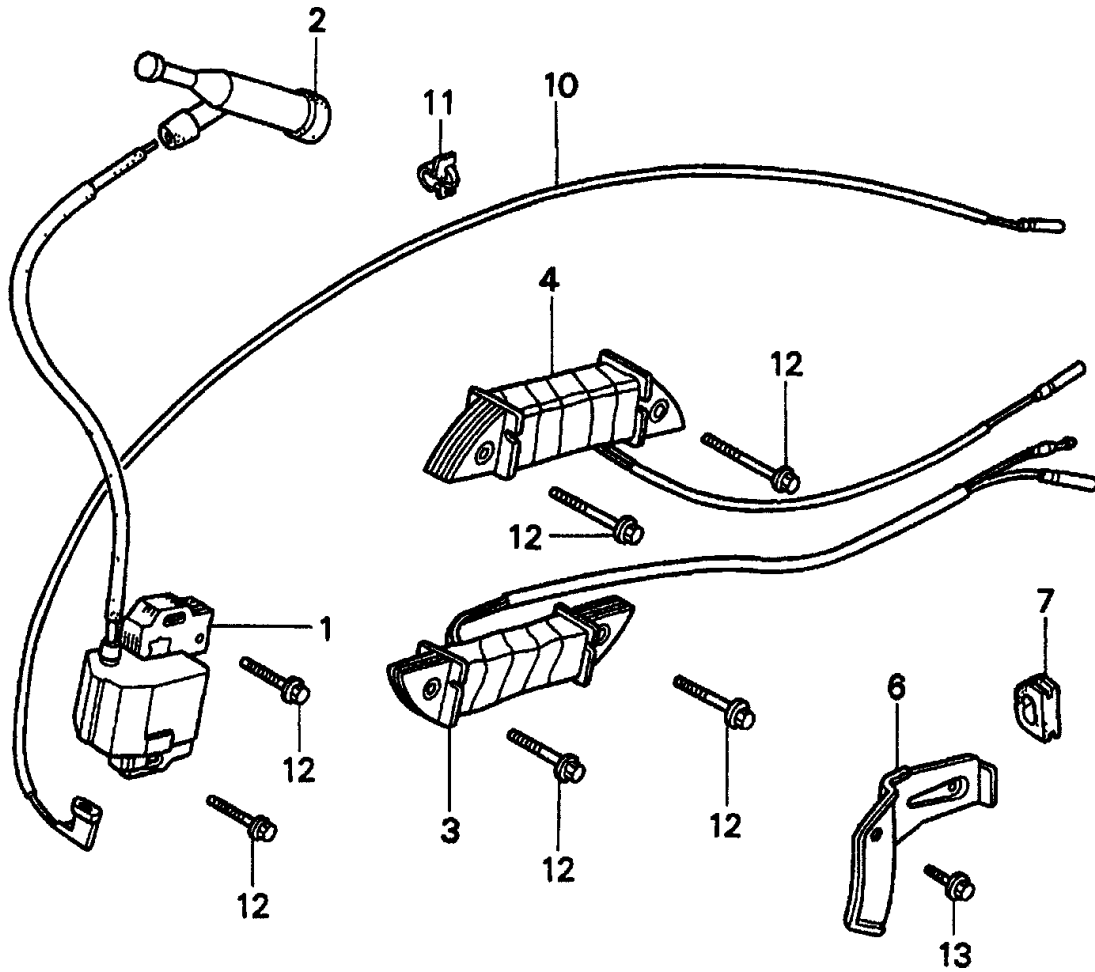
HONDA GX240K1EDN2 ENGINE — FLYWHEEL ASSY.

FLYWHEEL ASSY.

<u>NO.</u>	<u>PART NO.</u>	<u>PART NAME</u>	<u>QTY.</u>	<u>REMARKS</u>
2	19511ZE2000	FAN, COOLING	1	
5	28451ZE2W01	PULLEY STARTER	1	
10	31100ZE2812	FLYWHEEL, LAMP	1	
13	90201ZE3790	NUT, SPECIAL 16MM	1	USE UP TO S/N 3467138
13	90201ZE3V00	NUT, SPECIAL 16MM	1	USE FROM TO S/N 3467139

HONDA GX240K1EDN2 ENGINE — IGNITION COIL ASSY.

IGNITION COIL ASSY.



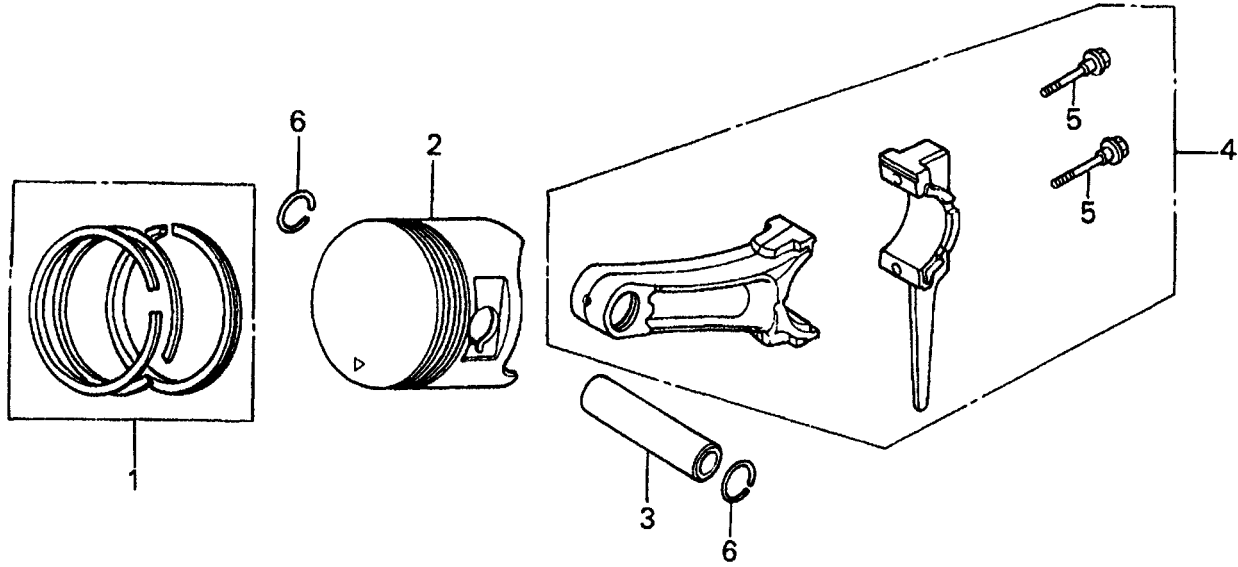
HONDA GX240K1EDN2 ENGINE — IGNITION COIL ASSY.

IGNITION COIL ASSY.

<u>NO.</u>	<u>PART NO.</u>	<u>PART NAME</u>	<u>QTY.</u>	<u>REMARKS</u>
1	30500ZF6W02	COIL ASSY., IGNITION	1	
2	30700ZE1013	CAP ASSY., NOISE SUPPRESSOR	1	
3	31510ZE1811	COIL ASSY., LAMP (12V/25W)	1	
4	31510ZE3003	COIL ASSY., LAMP (12V/25W)	1	
6	31511ZE2000	CLAMP, WIRE	1	
7	31512ZE2000	GROMMET, WIRE	1	
10	36101ZE2701	WIRE, STOP SWITCH (470MM)	1	
11	36103ZE1000	HOLDER, STOP SWITCH WIRE	1	
12	90015883000	BOLT, FLANGE (6X28)	6	
13	90013883000	BOLT, FLANGE (6X12) (CT200)	1	

HONDA GX240K1EDN2 ENGINE — PISTON ASSY.

PISTON ASSY.



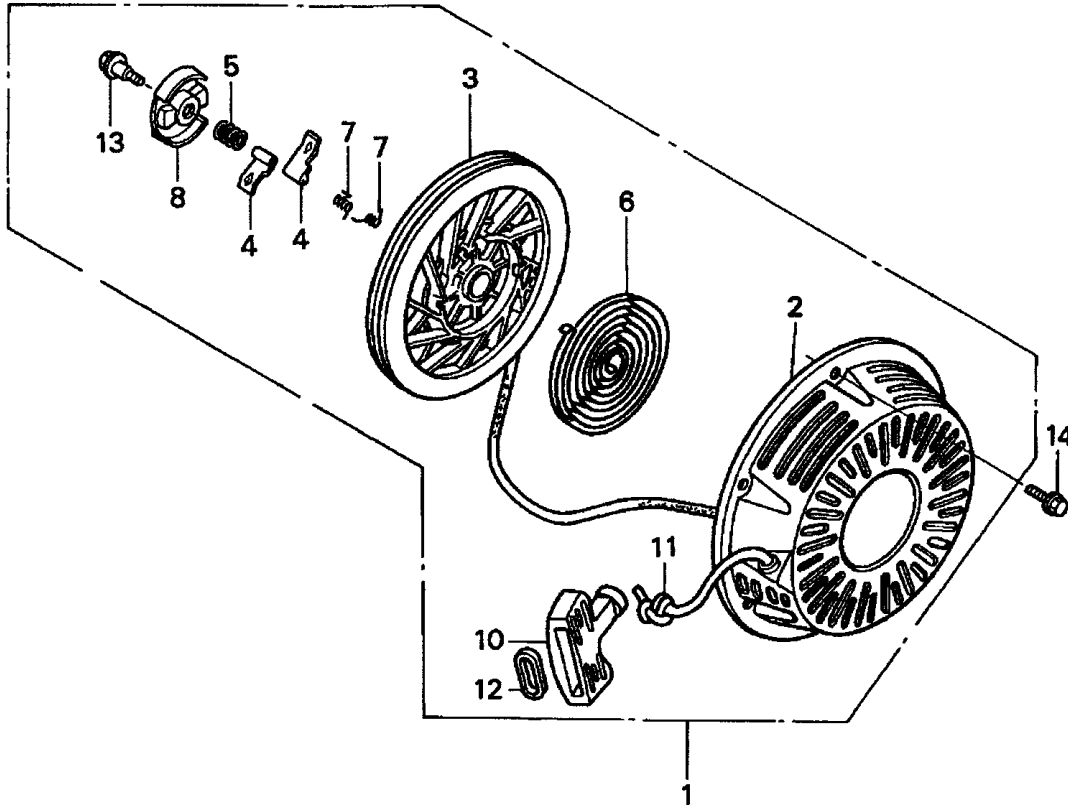
HONDA GX240K1EDN2 ENGINE — PISTON ASSY.

PISTON ASSY.

<u>NO.</u>	<u>PART NO.</u>	<u>PART NAME</u>	<u>QTY.</u>	<u>REMARKS</u>
1	13010ZE2013	RING SET, PISTON (STD)	1	USE UP TO S/N 4081304
1	13011ZE2013	RING SET, PISTON (OS 0.25, OPTIONAL)	1	USE UP TO S/N 4081304
1	13012ZE2013	RING SET, PISTON (OS 0.50, OPTIONAL)	1	USE UP TO S/N 4081304
1	13013ZE2013	RING SET, PISTON (0.75, OPTIONAL)	1	USE UP TO S/N 4081304
2	13101ZE2W00	PISTON (STD)	1	
2	13102ZE2W00	PISTON (OS 0.25, OPTIONAL)	1	
2	13103ZE2W00	PISTON (OS 0.50, OPTIONAL)	1	
2	13104ZE2W00	PISTON (OS 0.75, OPTIONAL)	1	
3	13111ZF6000	PIN, PISTON	1	
4	13200ZE2010	ROD ASSY., CONNECTING (STD)	1	INCLUDES ITEMS W/*
5*	90001ZE8000	BOLT, CONNECTING ROD	2	
6	90551ZE1000	CLIP, PISTON PIN (18MM)	2	

HONDA GX240K1EDN2 ENGINE — RECOIL STARTER ASSY.

RECOIL STARTER ASSY.



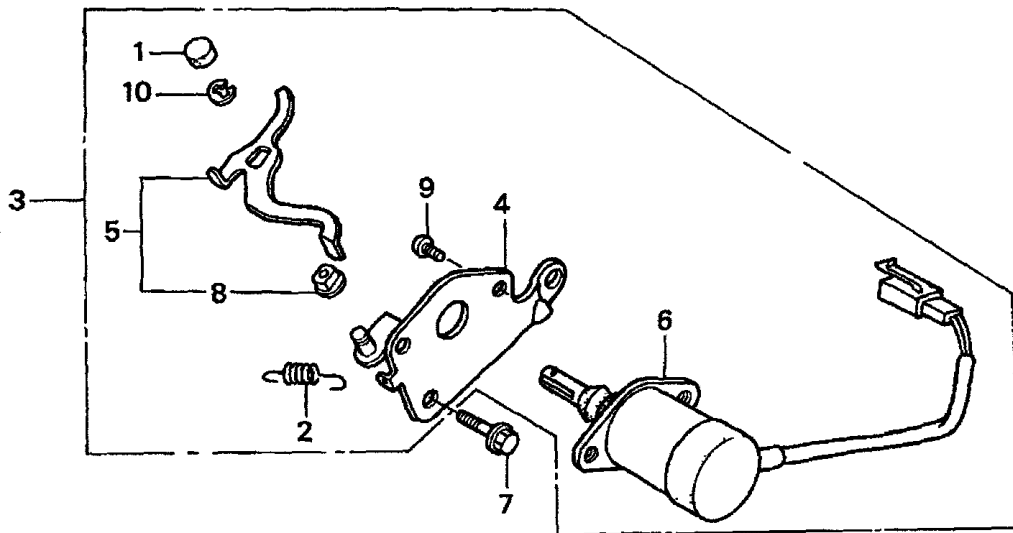
HONDA GX240K1EDN2 ENGINE — RECOIL STARTER ASSY.

RECOIL STARTER ASSY.

<u>NO.</u>	<u>PART NO.</u>	<u>PART NAME</u>	<u>QTY.</u>	<u>REMARKS</u>
1	28400ZE2W01ZB	STARTER ASSY., RECOIL *NH1* (BLACK)	1	INCLUDES ITEMS W/*
2*	28410ZE2W01ZB	CASE, RECOIL STARTER *NH1* (BLACK)	1	
3*	28421ZE2W01	PULLEY, RECOIL STARTER	1	
4*	28422ZE2W01	RATCHET, STARTER	2	
5*	28441ZE2W01	SPRING, FRICTION	1	
6*	28442ZE2W01	SPRING, STARTER RETURN	1	
7*	28443ZE2W01	SPRING, RATCHET	2	
8*	28444ZE2W01	RETAINER, SPRING	1	
9*	28445ZE2W01	HOLDER, SPRING	1	
10*	28461ZE2W02	GRIP, STARTER	1	
11*	28462ZE2W01	ROPE, RECOIL STARTER	1	USE UP TO S/N 3793540
11*	28462ZE2W11	ROPE, RECOIL STARTER	1	USE FROM S/N 3793541
12*	28469ZE2W01	GRIP, REINFORCEMENT	1	USE UP TO S/N 3793540
13*	90004ZE2W01	SCREW, CENTER	1	
14	90008ZE2003	BOLT, FLANGE (6X10)	3	

HONDA GX240K1EDN2 ENGINE — SOLENOID ASSY.

SOLENOID ASSY.



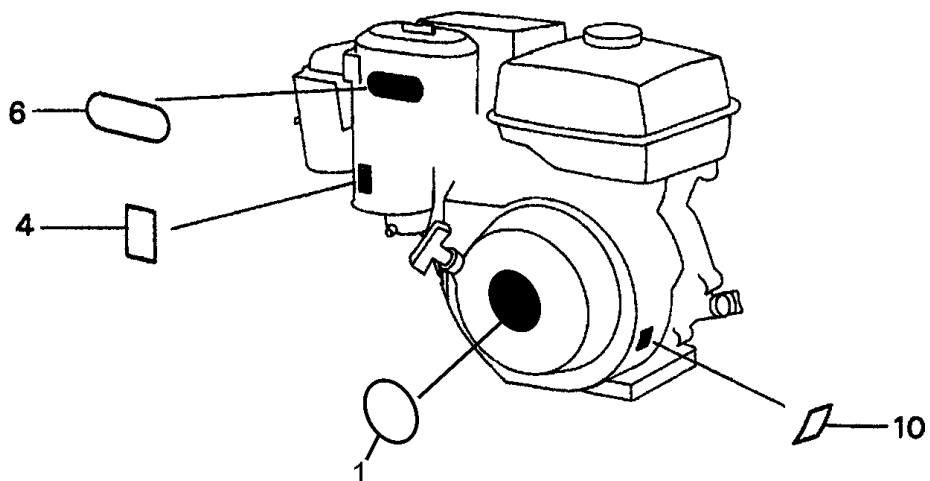
HONDA GX240K1EDN2 ENGINE — SOLENOID ASSY.

SOLENOID ASSY.

<u>NO.</u>	<u>PART NO.</u>	<u>PART NAME</u>	<u>QTY.</u>	<u>REMARKS</u>
1*	16252ZA1010	CAP, CHOKE LEVER	1	
2*	16268893000	SPRING, CHOKE RETURN	1	
3	16270ZB4010	AUTO-THROTTLE	1	INCLUDES ITEMS W/*
4*	16271ZB4000	STAY, SOLENOID THROTTLE	1	
5*	16273ZB4000	LEVER, SOLENOID THROTTLE	1	
6*	36160ZB4003	SOLENOID ASSY.	1	
7*	90013883000	BOLT, FLANGE (6X12) (CT200)	1	
8*	91502ZB4701	BUSH, AUTO-THROTTLE LEVER	1	
9*	93500050080A	SCREW, PAN (5X8)	2	
10*	9454004018	E-RING 4MM	1	

HONDA GX240K1EDN2 ENGINE — LABELS ASSY.

LABELS ASSY.



HONDA GX240K1EDN2 ENGINE — LABELS ASSY.

LABELS ASSY.

<u>NO.</u>	<u>PART NO.</u>	<u>PART NAME</u>	<u>QTY.</u>	<u>REMARKS</u>
1	87521ZE2W01	EMBLEM	1	
4	87528898620	MARK, CHOKE	1	
6	87533ZC0630	MARK, AIR CLEANER	1	
10	87594ZB4A00	MARK, OIL CAUTION	1	