

PARTS AND OPERATION MANUAL

Multiquip DS-Series DuoScreed

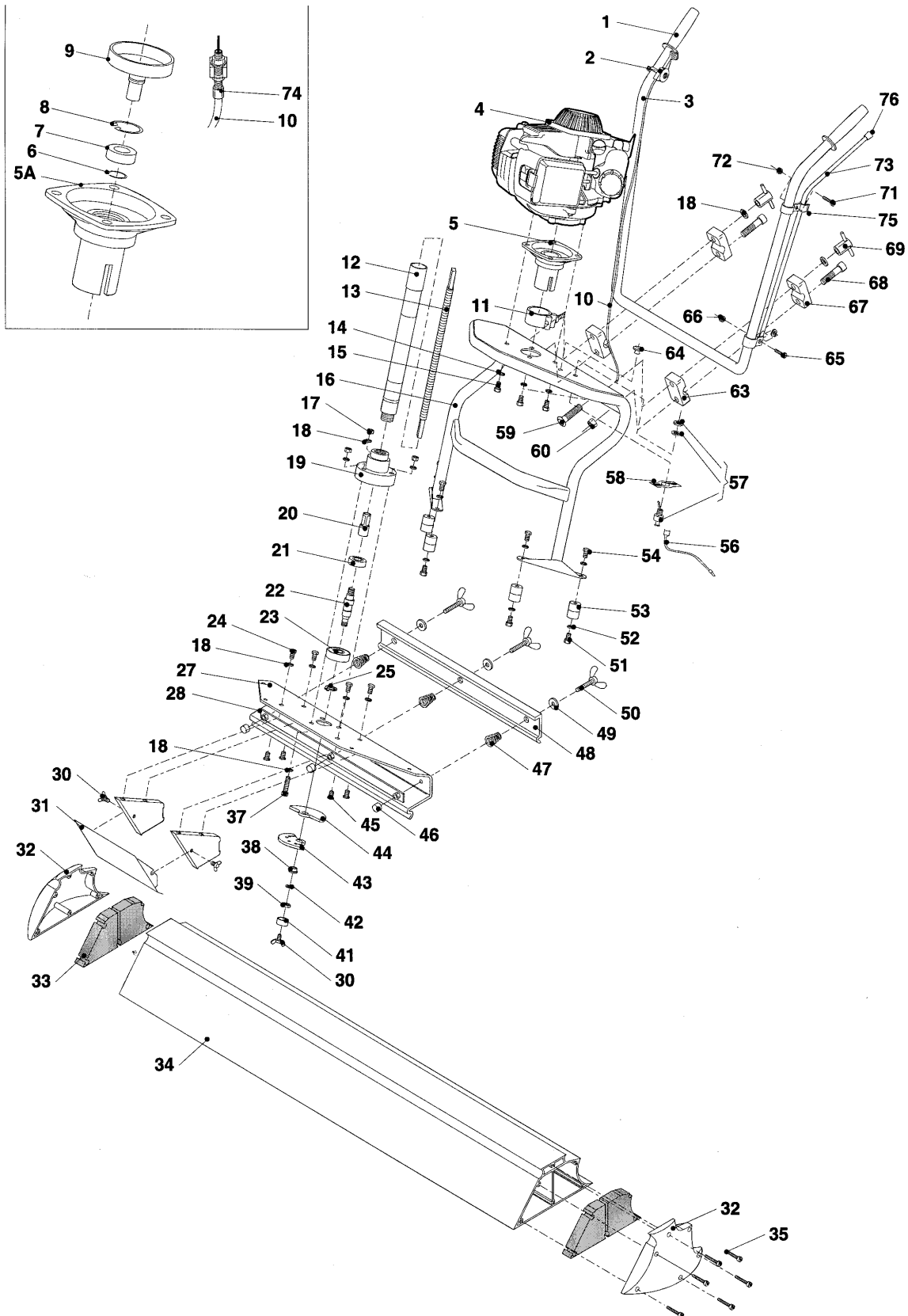
DUOSCREED 1 TO 3 UNITS WITH HONDA GX31SA ENGINE

1 to 3 Units

Qty.....	P/N.....	Description
2	BF2648	HANDLE GRIP
1	BF2647	THROTTLE GRIP
2	BF2645	THROTTLE CABLE
1	BF2621	FLEXIBLE SHAFT
1	BF2609	ECCENTRIC COVER
3	BF2607	COMPRESSION SPRING
1	BF2605	ALUMINUM CLAMPING STRIP
3	BF0176	WASHER
3	BF2606	CLAMP
1	BF2643	STOP SWITCH
3	BF0325	WING NUT M6X12
3	9805655757	SPARK PLUG
3	17211ZM3000	ELEMENT AIR
1	15620ZM3003	CAP, OIL FILLER
1	28400ZM3003ZA	RECOIL STARTER ASSY.

DS-SERIES DUOSCREED — MAIN ASSY.

DUO SCREED MAIN ASSY.



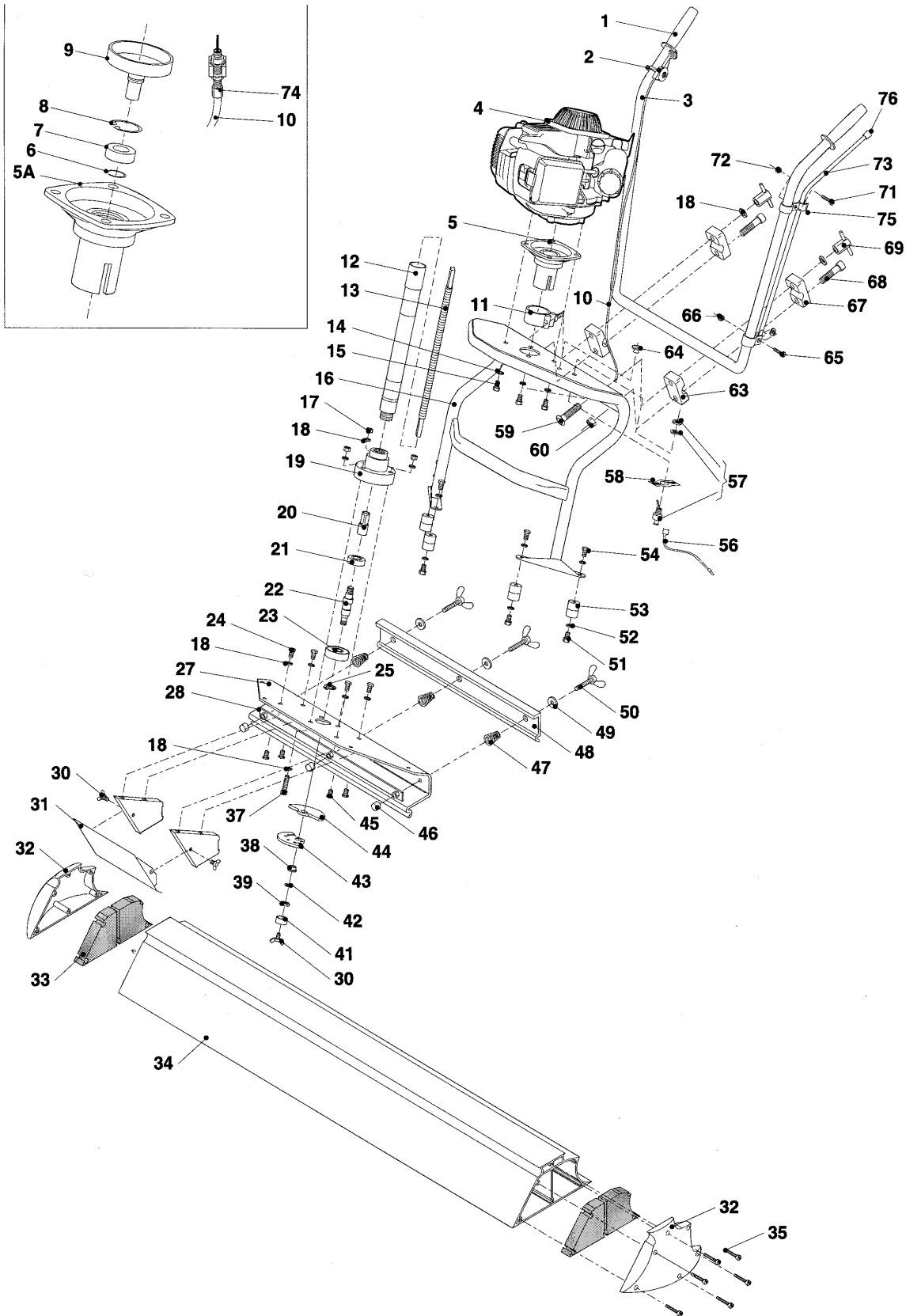
DS-SERIES DUOSCREED — MAIN ASSY.

DUO SCREED MAIN ASSY.

<u>NO.</u>	<u>PART NO.</u>	<u>PART NAME</u>	<u>QTY.</u>	<u>REMARKS</u>
1	BF2648	HANDLE GRIP	2	
2	BF2647	THROTTLE HANDLE	1	
3	BF2633	UPPER OPERATING HANDLE	1	
4	BF2640A	ENGINE HONDA GX 31SA (USA)	1	
5	BF2641	CENTRIFUGAL CLUTCH HOUSING COMPLETE (EXCLUDING CLAMP 11)	1	
5A	BF2641	CENTRIFUGAL CLUTCH HOUSING WITH ALUMINUM RING	1	
6	BF0201	RETAINING RING 17 X 1 MM IN CENTRIFUGAL HOUSING	1	
7	BF2642C	BEARING IN CENTRIFUGAL HOUSING	1	
8	BF0205	RETAING RING (BIG)	1	
9	BF2642	CENTRIFUGAL DRUM	1	
10	BF2645	THROTTLE ASM. CABLE 100CMS.	1	
11	BF2626	CENTRIFUGAL HOUSING CLAMP	1	
12	BF2625	RUBBER HOSE WITH CONNECTORS	1	
13	BF2621	FLEXIBLE SHAFT	1	
14	BF0178	SPRING WASHER M6 TYPE B	4	
15	BF0165	SOCKET HEAD BOLT M6 X 25	4	
16	BF2632	LOWER OPERATING HANDLE	1	
17	BF0101	SELF LOCKING NUT M8	3	
18	BF0155	FLAT WASHER M8	8	
19	BF2611	ECCENTRIC HOUSING	1	
20	BF1100000008	COUPLING DRIVE PIN	1	
21	BF2619	BEARING (SMALL)	1	
22	BF2612	ECCENTRIC SHAFT	1	
23	BF2314	BEARING (BIG)	1	
24	BF0125	TAP BOLT M8 X 16	4	
25	BF0201	RETAINING RING 17 X 1MM	1	
27	BF2604	ECCENTRIC ASSEMBLY PLATE	1	
28	BF2610	STRIP & NUTS FOR ALUMINUM CLAMP	1	
30	BF0325	WING NUT M6 X 12	3	
31	BF2609	ECCENTRIC COVER	1	
32	BF2602	ENDCAPS SET	1	
33	BF2602A	ALUMINUM BLADE SEALS SET (1 SIDE)	1	
34		DUOSCREED BLADE 1.5 MTR. - 5 FT.	1	ACCESSORY ITEM ORDER
		DUOSCREED BLADE 1.9 MTR.- 6 FT.	1	FROM UNIT SALES DEPT.
		DUOSCREED BLADE 2.5 MTR. - 8 FT.	1	"
		DUOSCREED BLADE 3.0 MTR. - 10 FT.	1	"
		DUOSCREED BLADE 3.75 MTR. - 12 FT.	1	"
		DUOSCREED BLADE 4.25 MTR. - 14 FT.	1	"
		DUOSCREED BLADE 5.0 MTR. - 16 FT.	1	"
		DUOSCREED BLADE 5.50 MTR. - 18 FT.	1	"
		DUOSCREED BLADE 6.0 MTR. - 20 FT.	1	"

DS-SERIES DUOSCREED — MAIN ASSY.

DUO SCREED MAIN ASSY.



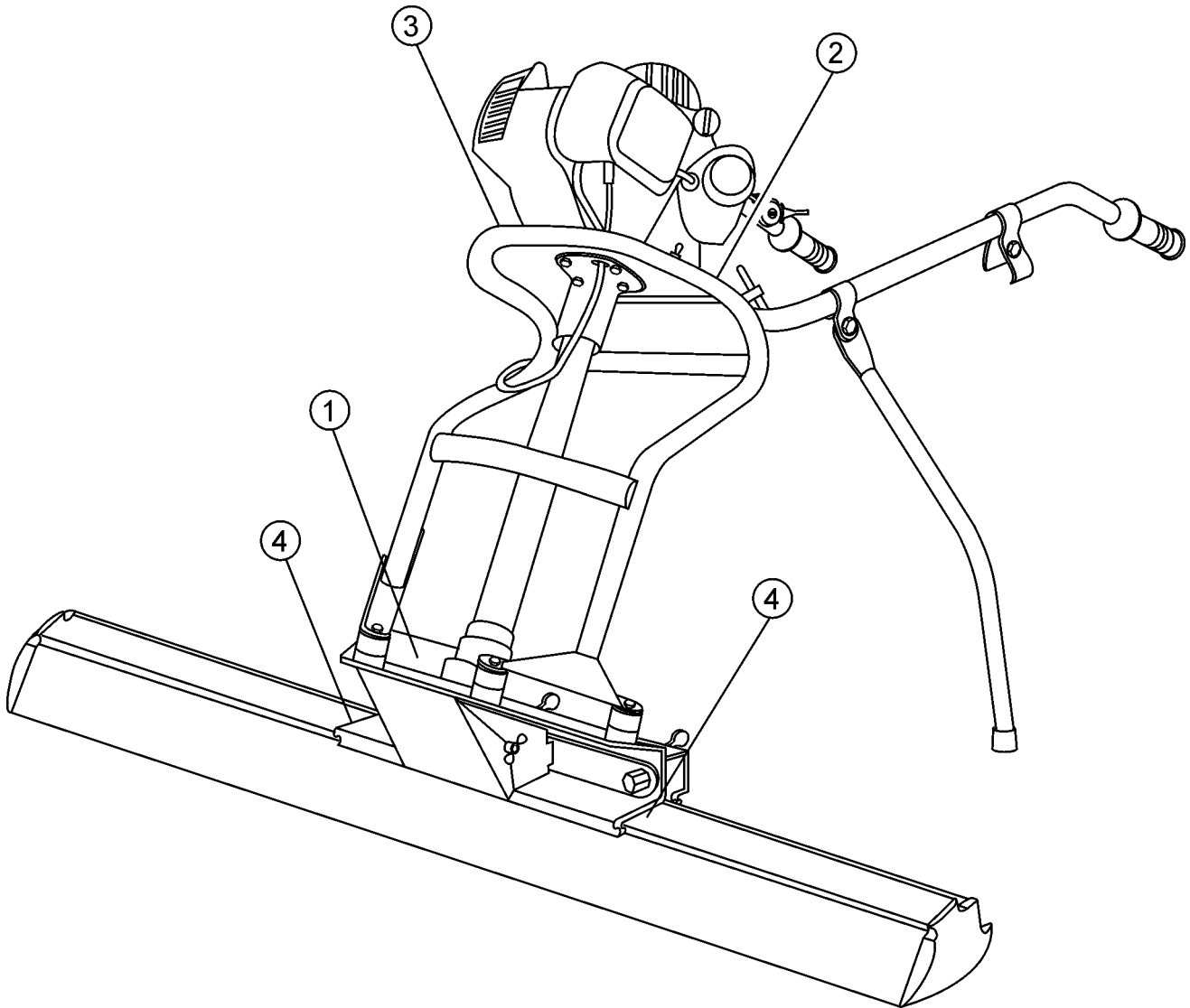
DS-SERIES DUOSCREED — MAIN ASSY.

DUO SCREED MAIN ASSY.

<u>NO.</u>	<u>PART NO.</u>	<u>PART NAME</u>	<u>QTY.</u>	<u>REMARKS</u>
35	BF0277	SELF TAPPING SCREW M5 X 20	12	
37	BF0129	TAP BOLT M8 X 40	3	
38	BF2614	ECCENTRIC HINGE BUSHING	1	
39	BF0177	NUT M12 (FINE)	1	
41	BF2613	ECCENTRIC CLAMPING BUSH	1	
42	BF0175	RETAINING RING M12	1	
43	BF2615A	ECCENTRIC PLATE (SMALL)	1	
44	BF2615B	ECCENTRIC PLATE (BIG)	1	
45	BF0229	COUNTERSUNK HEADSCREW 8.8 M8X20	4	
46	BF2617	PLASTIC PROTECTION CAP M12	3	
47	BF2607	COMPRESSION SPRING FOR CLAMPING STRIP	3	
48	BF2605	ALUMINUM CLAMPING STRIP	1	
49	BF0176	WASHER M12X6	3	
50	BF2606	CLAMP FOR CLAMPING STRIP	3	
51	BF0285	TAP BOLT M8X12	3	
52	BF0212	INTERNAL TOOTHING RING M8	8	
53	BF0056	RUBBER BUFFER 30X30 M8	4	
54	BF0124	TAP BOLT M8X10	4	
56	BF2643A	EARTH WIRE FOR STOP SWITCH	1	
57	BF2643	STOPSWITCH	1	INCLUDES ITEMS W/*
58*		ON-OFF INDICATION PLATE	1	
59	BF0283	CARRIAGE BOLT M8X50	2	
60	BF0089	SELF LOCKING FLANGE NUT M6	2	
63	BF2635	LOWER ALUMINUM CLAMP	2	
64	BF2649	RUBBER SLEEVE	1	
65	BF0258	TAP BOLT M6X20	1	
66	BF0100	SELF LOCKING NUT	1	
67	BF2635A	UPPER ALUMINUM CLAMP	2	
68	BF0284	SOCKET HEAD BOLT M6X40	2	
69	BF2636	CLAMP FOR HEIGHT ADJUSTMENT	2	
71	BF0261	SCREW M5X12	1	
72	BF0099	SELF LOCKING NUT M5	1	
73	BF2637	SUPPORTING LEG	1	
74	BF2644	GAS THROTTLE ADJUSTMENT BOLT	1	
75	BF2639	CLAMP FOR SUPPORTING LEG	1	
76	BF2634	RUBBER PROTECTION CAP FOR SUPPORT LEG	1	

DS-SERIES DUOSCREED — NAME PLATE AND DECALS

NAME PLATE AND DECALS.



DS-SERIES DUOSCREEN — NAME PLATE AND DECALS

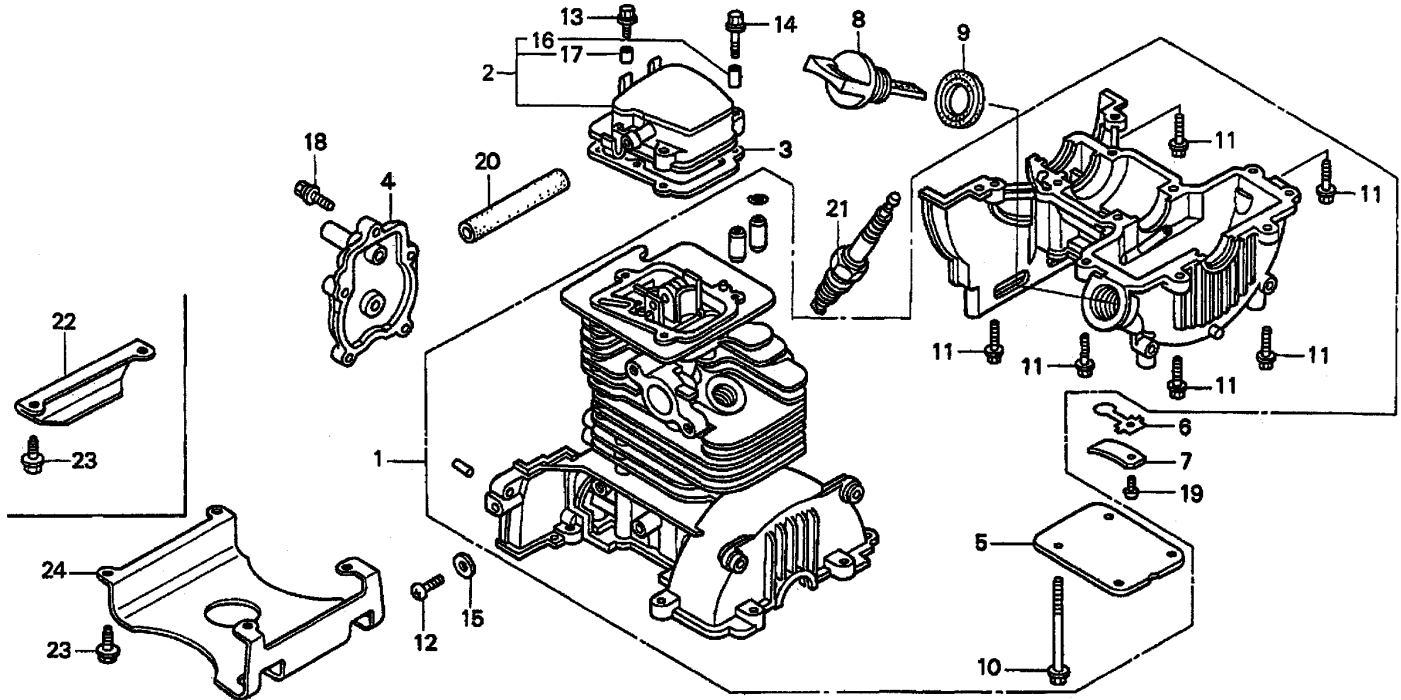
NAME PLATE AND DECALS.

<u>NO</u>	<u>PART NO</u>	<u>PART NAME</u>	<u>QTY.</u>	<u>REMARKS</u>
1*	DCL121	DECAL, PRESSURE HOSE	1	
2*	DCL122	DECAL, SAFETY	1	
3		PLATE, SERIAL NO.	1 CONTACT MQ SERVICE DEPT. W/MODEL & S/N
4*	DCL140	DECAL, ALIGNMENT ARROWS	2	
	DCLDS-SERIES	KIT, DECAL	1 INCLUDES ITEMS W/*

SEE DECAL ILLUSTRATIONS ON PAGE 7.

HONDA GX31SA ENGINE — CRANKCASE ASSY.

CRANKCASE ASSY.



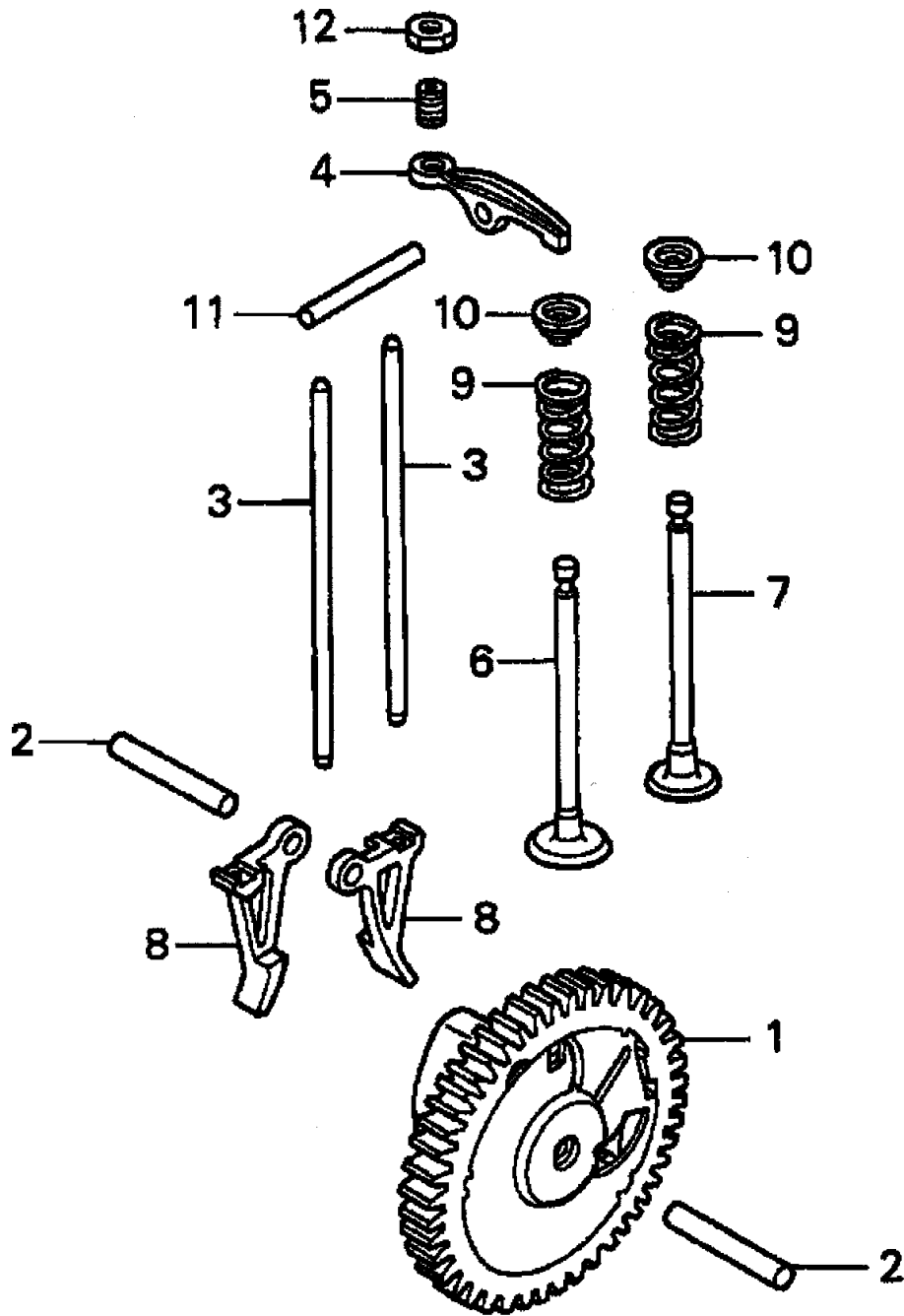
HONDA GX31SA ENGINE — CRANKCASE ASSY.

CRANKCASE ASSY.

<u>NO.</u>	<u>PART NO.</u>	<u>PART NAME</u>	<u>QTY.</u>	<u>REMARKS</u>
1	11010ZM5000	CRANKCASE SET	1	INCLUDES ITEM W/*
1	11010ZM5010	CRANKCASE SET	1	INCLUDES ITEM W/*
2	04102ZM3000	COVER COMP., HEAD	1	INCLUDES ITEM W/# USE UP TO SN1040026
2	12310ZM3000	COVER COMP., HEAD	1	INCLUDES ITEM W/# USE FROM SN1040027
3	12312ZM3000	GASKET, HEAD COVER	1	USE UP TO SN1040026
3	12312ZM3010	GASKET, HEAD COVER	1	USE FROM SN 1040027
4	14121ZM5000	COVER, CAMSHAFT	1	
5*	15511ZM3000	COVER, OIL OUTLET VALVE	1	
6	15571ZM3003	VALVE, OIL OUTLET	1	
7	15572ZM3000	PLATE, STOPPER	1	
8	15620ZM3003	CAP, OIL FILTER	1	
9	15625ZE1003	GASKET, OIL FILTER CAP	1	
10*	90003ZM3000	BOLT, FLANGE (5X55)	4	
11*	90005ZM3000	BOLT, FLANGE (5X18)	6	
12	90011ZM3000	SCREW, PAN (6X8)	1	
13	90002ZM3000	BOLT, FLANGE (5X14)	1	USE FROM SN 1040026
13	90101P4V000	BOLT, FLANGE (5X12)	1	USE UP TO SN 1040027
14	90001ZM3000	BOLT, FLANGE (5X22)	2	USE FROM SN 1040026
14	90112GK8010	BOLT, FLANGE (5X22)	2	USE UP TO SN 1040027
15	90481GW3000	WASHER, SEALING (6.5MM)	1	
16#	91501ZM3000	COLLAR, HEAD COVER	2	USE UP TO SN 1040026
16#	91501ZM3010	COLLAR, HEAD COVER	2	USE FROM SN1040027
17#	91502ZM3000	COLLAR, HEAD COVER	1	USE UP TO SN1040026
17#	91506ZM3000	COLLAR, HEAD COVER	1	USE FROM SN 1040027
18	934010401600	BOLT-WASHER (4X16)	5	
19	93500030050A	SCREW, PAN (3X5)	1	
20	95005700033M	BULK HOSE, VACUUM(7X3000) (7X68)	1	
21	9805655757	SPARK PLUG (U16FSR-UB)	1	
21	9805655777	SPARK PLUG (R5HSB)	1	

HONDA GX31SA ENGINE — CAMSHAFT ASSY.

CAMSHAFT ASSY.



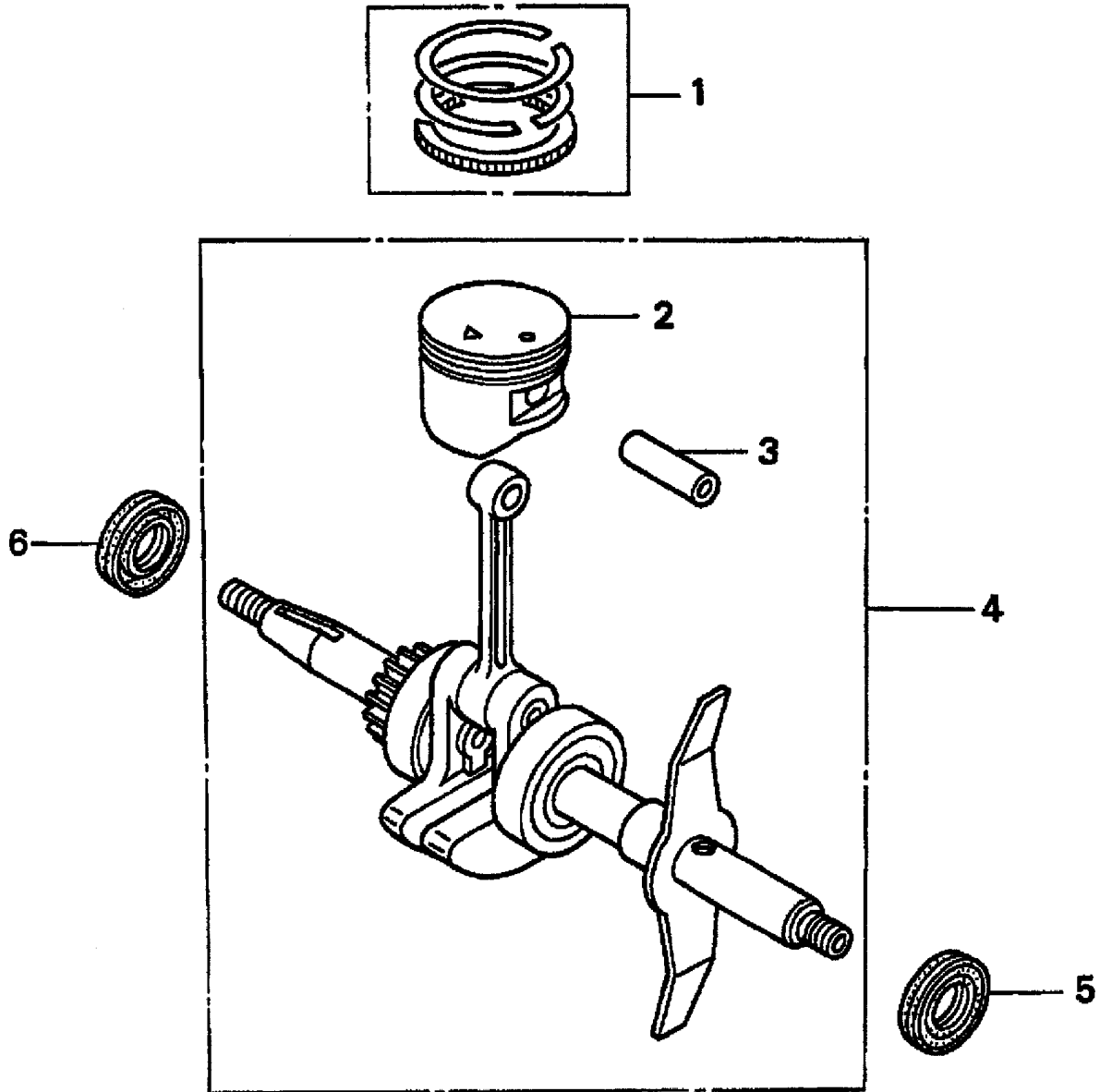
HONDA GX31SA ENGINE — CAMSHAFT ASSY.

CAMSHAFT ASSY.

<u>NO.</u>	<u>PART NO.</u>	<u>PART NAME</u>	<u>QTY.</u>	<u>REMARKS</u>
1	14100ZM3000	CAMSHAFT ASSY.	1	
2	14126ZM3000	ROLLER (5X23.8)	2	
3	14410ZM3000	ROD, PUSH	2	
4	14431ZM3000	ARM, VALVE ROCKER	2	
5	14451ZM3000	PIVOT, ROCKER ARM	2	
6	14711ZM5000	VALVE, IN.	1	
7	14721ZM3000	VALVE, EX.	1	
8	14731ZM3003	LIFTER, VALVE	2	
9	14751ZM3000	SPRING, VALVE	2	
10	14771ZM3000	RETAINER, VALVE SPRING	2	
11	41313PL3000	ROLLER (4X28)	1	
12	90206ZM3000	NUT, TAPPET ADJUSTING	2	

HONDA GX31SA ENGINE — PISTON/CRANKSHAFT ASSY.

PISTON CRANKSHAFT ASSY.



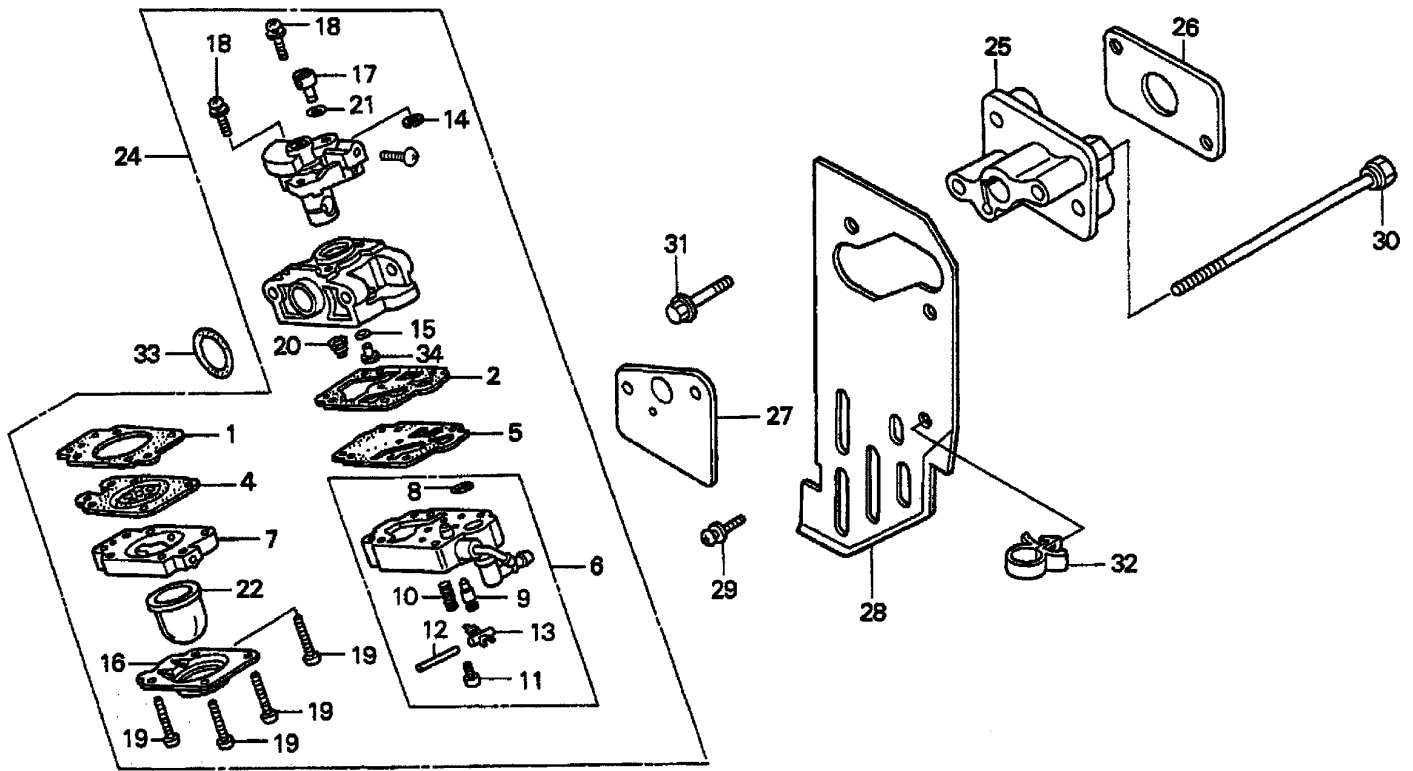
HONDA GX31SA ENGINE — PISTON/CRANKSHAFT ASSY.

PISTON CRANKSHAFT ASSY.

<u>NO.</u>	<u>PART NO.</u>	<u>PART NAME</u>	<u>QTY.</u>	<u>REMARKS</u>
1	13010ZM5000	RING SET, PISTON	1	
2*	13101ZM5000	PISTON	1	
3*	13111ZM5000	PIN, PISTON	1	
4	13310ZM5000	CRANKSHAFT COMP.	1	INCLUDES ITEM W/* USE UP TO SN 1040026
4	13310ZM5020	CRANKSHAFT COMP.	1	INCLUDES ITEM W/* USE FROM SN 1040027
5	91213ZM3003	OIL SEAL (12X25X6)	1	
6	91213ZM3003	OIL SEAL (12X25X6)	1	USE UP TO SN 1040026
6	91214ZM3003	OIL SEAL (15X25X6)	1	USE FROM SN 1040027

HONDA GX31SA ENGINE — CARBURETOR ASSY.

CARBURETOR ASSY.



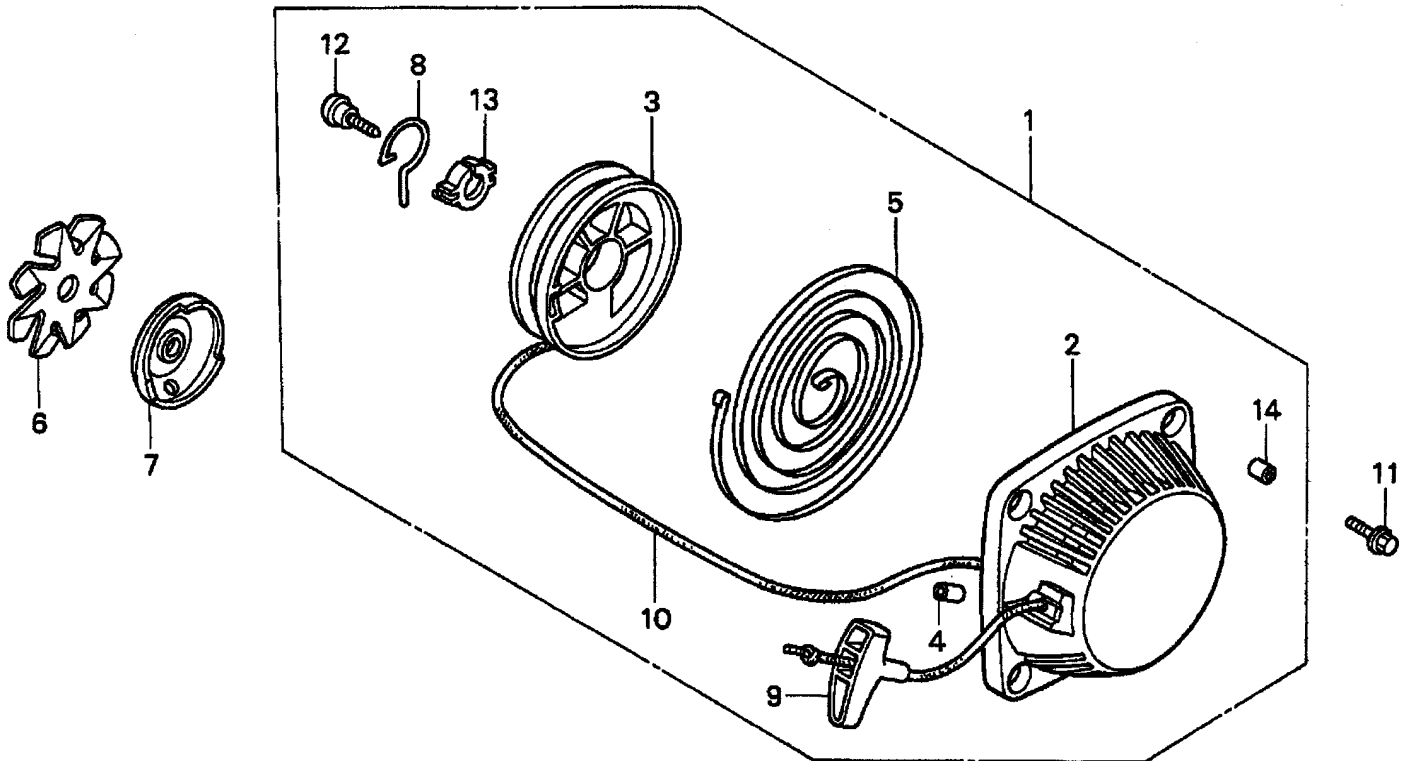
HONDA GX31SA ENGINE — CARBURETOR ASSY.

CARBURETOR ASSY.

<u>NO.</u>	<u>PART NO.</u>	<u>PART NAME</u>	<u>QTY.</u>	<u>REMARKS</u>
1*	16010ZM3004	GASKET, METERING DIAPHRAGM	1	
2*	16011ZM3014	GASKET, PUMP	1	
4*	16013ZM3004	DIAPHRAGM ASSY., METERING	1	
5*	16014ZM3004	DIAPHRAGM, PUMP	1	
6*	16015ZM3004	BODY ASSY., PUMP	1 NCLUDES ITEMS W/#
7*	16017ZM3004	BODY ASSY., AIR PURGE	1	
8#*	16018ZM3004	SCREEN, INLET	1	
9#*	16019ZM3004	VALVE, IN. NEEDLE	1	
10#*	16020ZM3004	SPRING, METERING LEVER	1	
11#*	16021ZM3004	SCREW, METERING LEVER PIN	1	
12#*	16022ZM3004	PIN, METERING LEVER	1	
13#*	16023ZM3004	LEVER, METERING	1	
14*	16024ZM3004	RING, SPRING RETAINING	1	
15*	16025ZM3004	O-RING	1	
16*	16026ZM3004	COVER, PRIMER PUMP	1	
17*	16027ZM3004	SWIVEL	1	
18*	16028ZM3004	SCREW, THROTTLE COLLAR	2	
19*	16029ZM3004	SCREW, PUMP COVER	4	
20*	16030ZM3004	SPRING, PUMP	1	
21*	16031ZM3004	WASHER	1	
22*	16032ZM3004	PUMP, PRIMER	1	
24	16100ZM5804	CARBURETOR ASSY.	1 INCLUDES ITEMS W/*
25	16211ZM3000	INSULATOR, CARBURETOR	1	
26	16212ZM3000	GASKET, INSULATOR	1	
27	16221ZM3000	GASKET, CARBURETOR	1	
28	19651ZM3000	GUIDE, AIR IN.	1	
29	938940501000	SCREW-WASHER (5X10)	1	
30	90010ZM3000	BOLT, HEX. (5X75)	2	
31	90112GK8010	BOLT, FLANGE (5X22)	2	
32	90659680013	CLIP, WIRE HARNESS	1	
33	91301ZM3000	O-RING (14.8X2.4)	1	
34*	99101ZM30380	JET (#38) (OPTIONAL)	1	
34*	99101ZM30390	JET (#39) (OPTIONAL)	1	
34*	99101ZM30400	JET (#40)	1	

HONDA GX31SA ENGINE — RECOIL STARTER ASSY.

RECOIL STARTER ASSY.



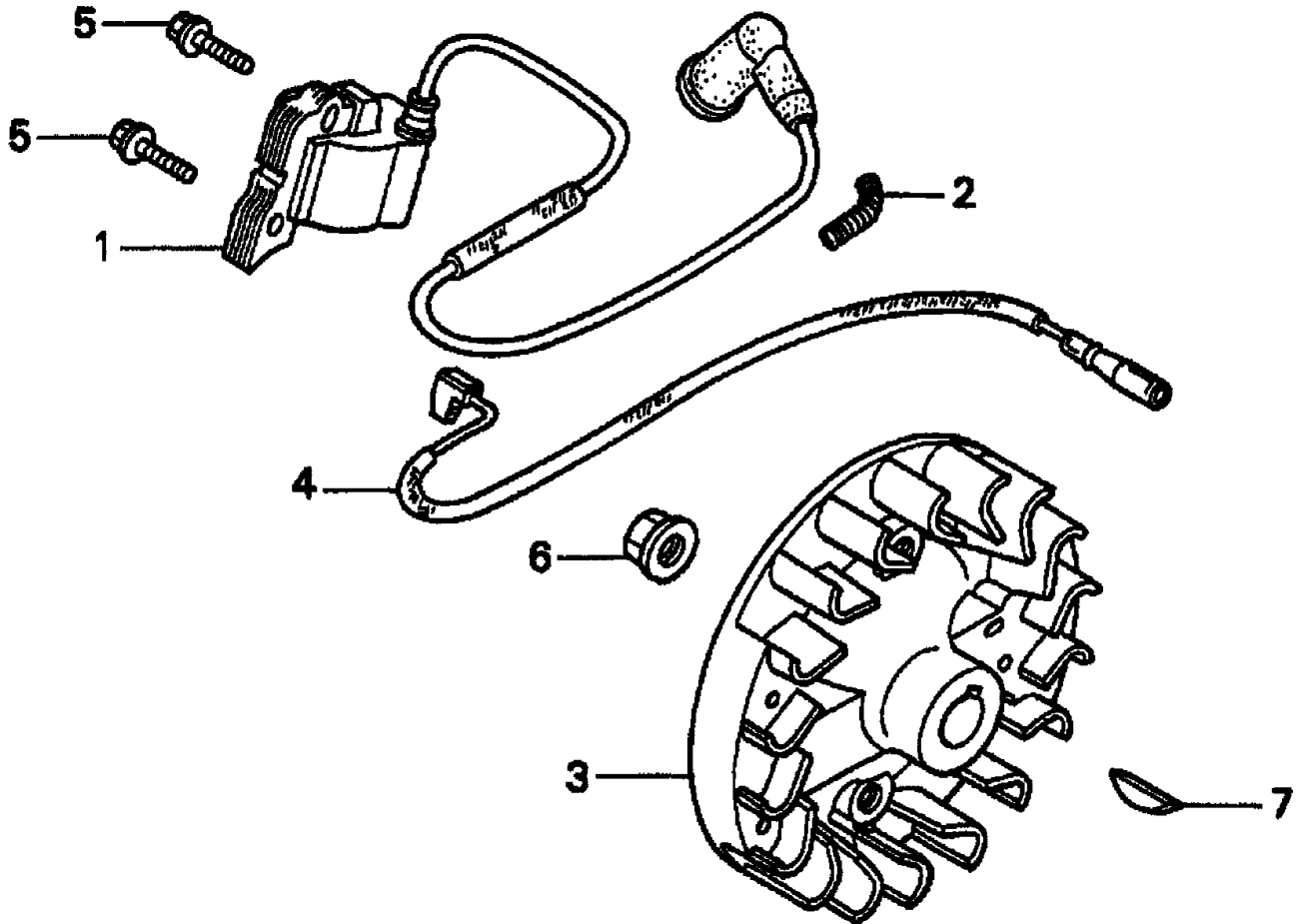
HONDA GX31SA ENGINE — RECOIL STARTER ASSY.

RECOIL STARTER ASSY.

<u>NO.</u>	<u>PART NO.</u>	<u>PART NAME</u>	<u>QTY.</u>	<u>REMARKS</u>
1	28400ZM3003ZA	RECOIL STARTER ASSY.	1	INCLUDES ITEMS W/*
2*	28414ZM3003	CASE, RECOIL STARTER	1	
3*	28421ZM3003	REEL, RECOIL STARTER	1	
4*	28433ZM3003	GUIDE, ROPE	1	
5*	28442ZM3003	SPRING, RECOIL STARTER	1	
6	28447ZM3000	FAN, RACHET	1	
7	28451ZM3003	PULLEY, RECOIL STARTER	1	
8*	28459ZM3003	SWING ARM	1	
9*	28461ZM3003	KNOB, RECOIL STARTER	1	
10*	28462ZM3003	ROPE, RECOIL STARTER	1	
11	90005ZM3000	BOLT, FLANGE (5X18)	4	
12*	90012ZM3003	SCREW, SETTING	1	
13*	91504ZM3003	COLLAR	1	
14*	91505ZM3003	COLLAR	4	

HONDA GX31SA ENGINE — FLYWHEEL/IGNITION COIL ASSY.

FLYWHEEL/IGNITION COIL ASSY.



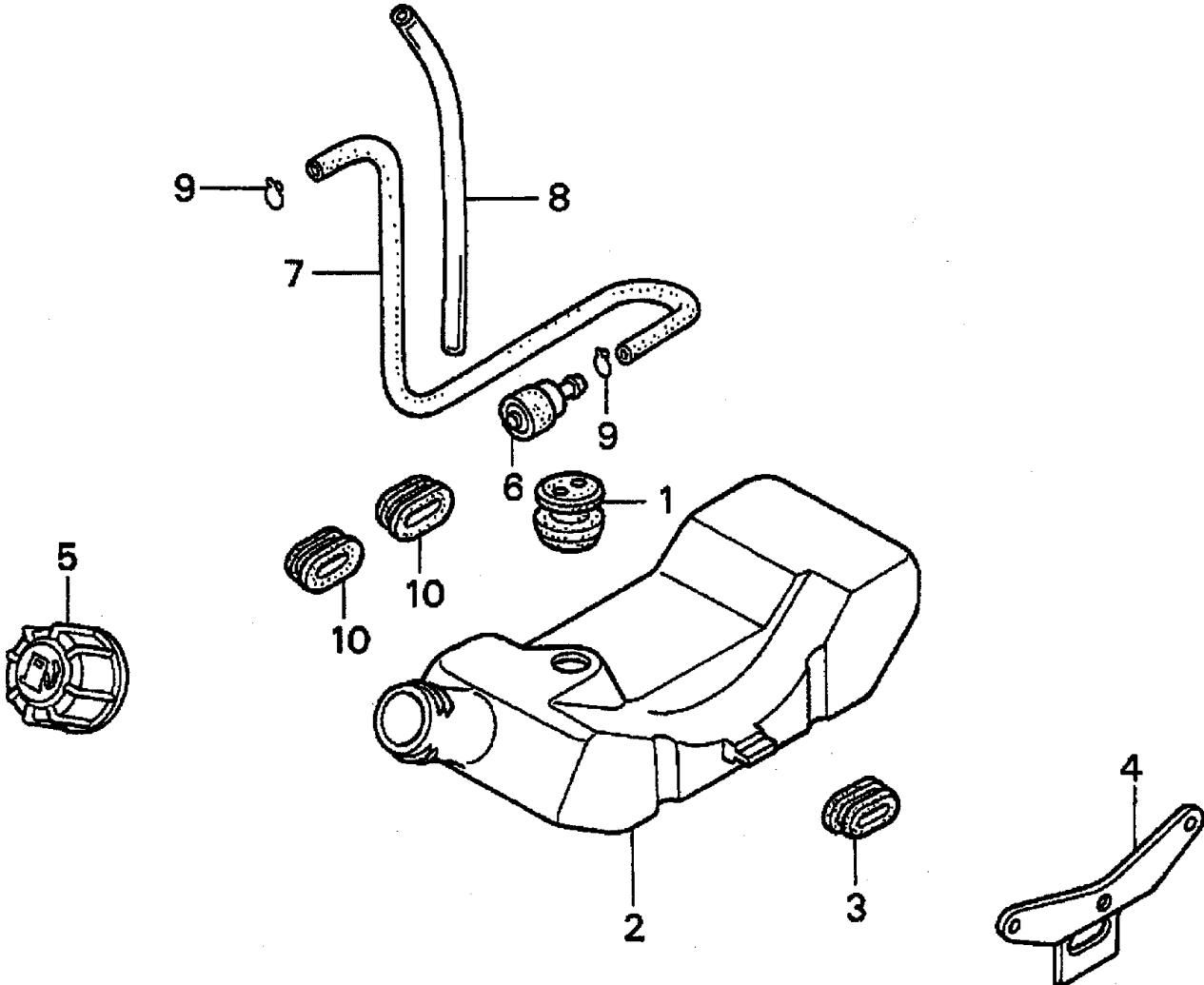
HONDA GX31SA ENGINE — FLYWHEEL/IGNITION COIL ASSY.

FLYWHEEL/IGNITION COIL ASSY.

<u>NO.</u>	<u>PART NO.</u>	<u>PART NAME</u>	<u>QTY.</u>	<u>REMARKS</u>
1	30500ZM3003	COIL ASSY., IGNITION	1	
2	30519ZM3000	TUBE A, CORRUGATED (7X18)	1	
3	31110ZM5003	FLYWHEEL COMP.	1 USE UP TO SN 1040026
3	31110ZM5013	FLYWHEEL COMP.	1 USE FROM SN 1040027
4	32195ZM3000	WIRE, STOP SWITCH	1	
5	934010501600	BOLT-WASHER (5X16)	2	
6	9405008000	NUT, FLANGE (8MM)	1 USE UP TO SN 1040026
6	9405010000	NUT, FLANGE (10MM)	1 USE FROM SN 1040027
7	9440116120	KEY, WOODRUFF (16X12)	1	

HONDA GX31SA ENGINE — FUEL TANK ASSY.

FUEL TANK ASSY.



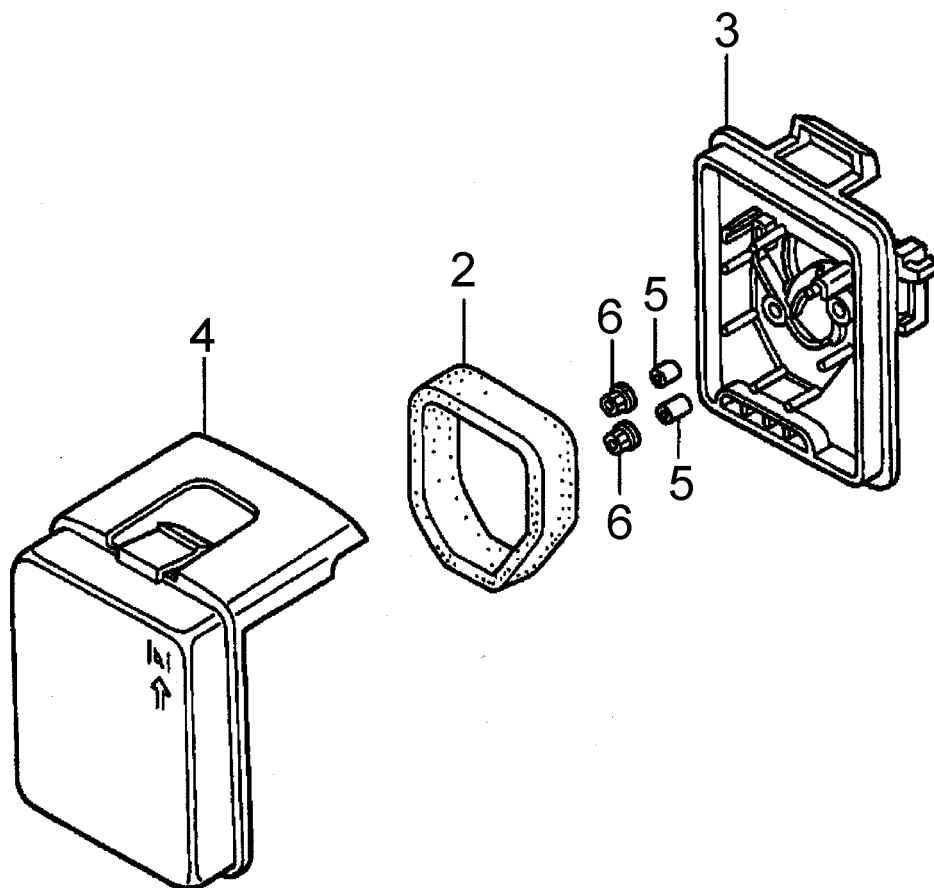
HONDA GX31SA ENGINE — FUEL TANK ASSY.

FUEL TANK ASSY.

<u>NO.</u>	<u>PART NO.</u>	<u>PART NAME</u>	<u>QTY.</u>	<u>REMARKS</u>
1	17504ZM3003	GROMMET, FUEL TUBE	1	
2	17511ZM5003	TANK, FUEL	1	
3	17532ZM3000	RUBBER, TANK MOUNTING	1	USE UP TO SN 1040026
3	17532ZM3010	RUBBER A, TANK MOUNTING	1	USE FROM SN 1040027
3	17533ZM3000	RUBBER B, TANK MOUNTING	1	USE UP TO SN 1040026
4	17561ZM3000	STAY, FUEL TANK	1	USE UP TO SN 1040026
4	17561ZM3010	STAY, FUEL TANK	1	USE FROM SN 1040027
5	17620ZM3023	CAP ASSY., FUEL TANK	1	USE UP TO SN 1064797
5	17620ZM3033	CAP ASSY., FUEL TANK	1	USE FROM SN 1040027
6	17672ZM3003	FILTER, FUEL	1	
7	17701ZM3003	TUBE, FUEL	1	
8	17702ZM3003	TUBE, FUEL RETURN	1	
9	91401ZM3003	CLIP, TUBE	2	
10	17532ZM3000	RUBBER, TANK MOUNTING	2	USE UP TO SN 1040026
10	17533ZM3000	RUBBER B, TANK MOUNTING	2	USE UP TO SN 1040027

HONDA GX31SA ENGINE — AIR CLEANER ASSY.

AIR CLEANER ASSY.



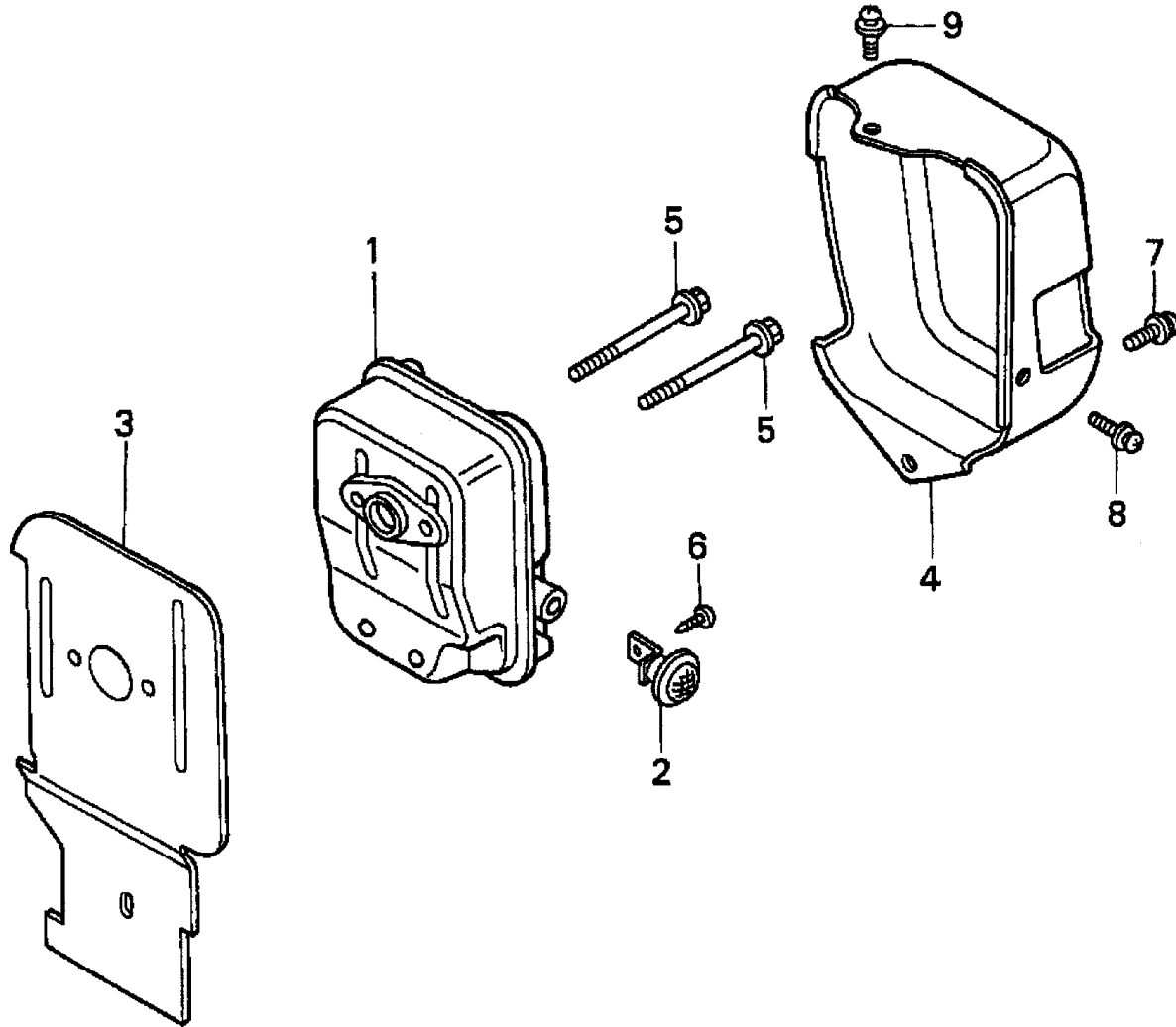
HONDA GX31SA ENGINE — AIR CLEANER ASSY.

AIR CLEANER ASSY.

<u>NO.</u>	<u>PART NO.</u>	<u>PART NAME</u>	<u>QTY.</u>	<u>REMARKS</u>
2	17211ZM3000	ELEMENT, AIR CLEANER	1	
3	17220ZM3000ZA	HOUSING COMP., AIR CLEANER	1	BRIGHT RED
4	17231ZM3000ZA	COVER, AIR CLEANER	1	BRIGHT RED
5	91503ZM3000	COLLAR, AIR CLEANER	2	
6	9405005000	NUT, FLANGE (5MM)	2	

HONDA GX31SA ENGINE — MUFFLER ASSY.

MUFFLER ASSY.

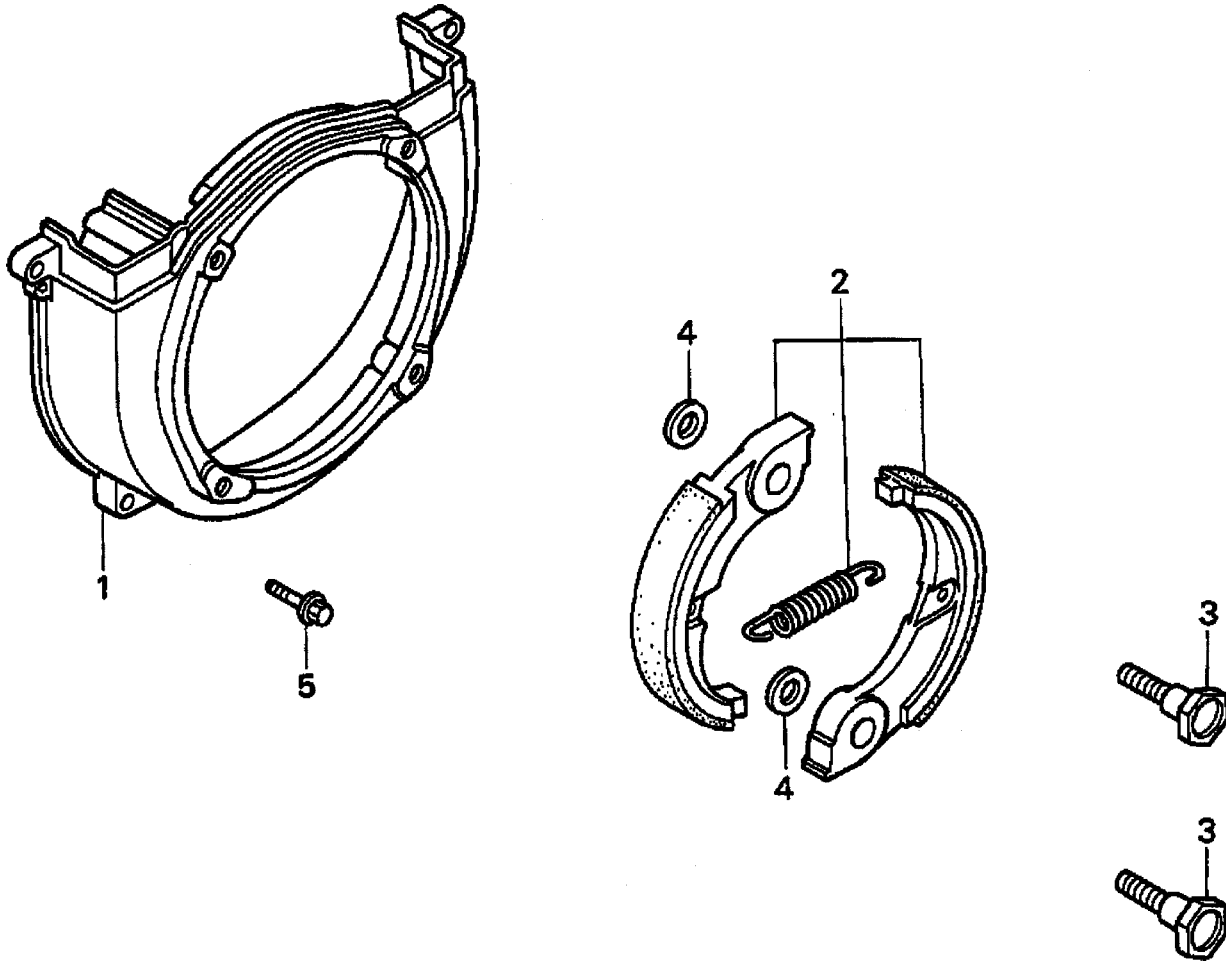


HONDA GX31SA ENGINE — MUFFLER ASSY.

MUFFLER ASSY.

<u>NO.</u>	<u>PART NO.</u>	<u>PART NAME</u>	<u>QTY.</u>	<u>REMARKS</u>
1	18310ZM3800	MUFFLER COMP.	1	
2	18355ZM3801	ARRESTER ,SPARK	1	
3	18515ZM3000	GUIDE, AIR EX.	1	
4	19722ZM3000	INNER COVER, TOP	1	USE UP TO SN 1007272
4	19722ZM3810	INNER COVER, TOP	1	USE FROM SN 1007273
5	90004ZM3000	BOLT, FLANGE (5X50)	2	
6	90055ZE1000	SCREW, TAPPING (4X6)	1	
7	938910500800	SCREW - WASHER (5X8)	1	
8	938940501000	SCREW - WASHER (5X10)	1	
9	938940501600	SCREW - WASHER (5X16)	1	

HONDA GX31SA ENGINE — CLUTCH/FAN COVER ASSY.

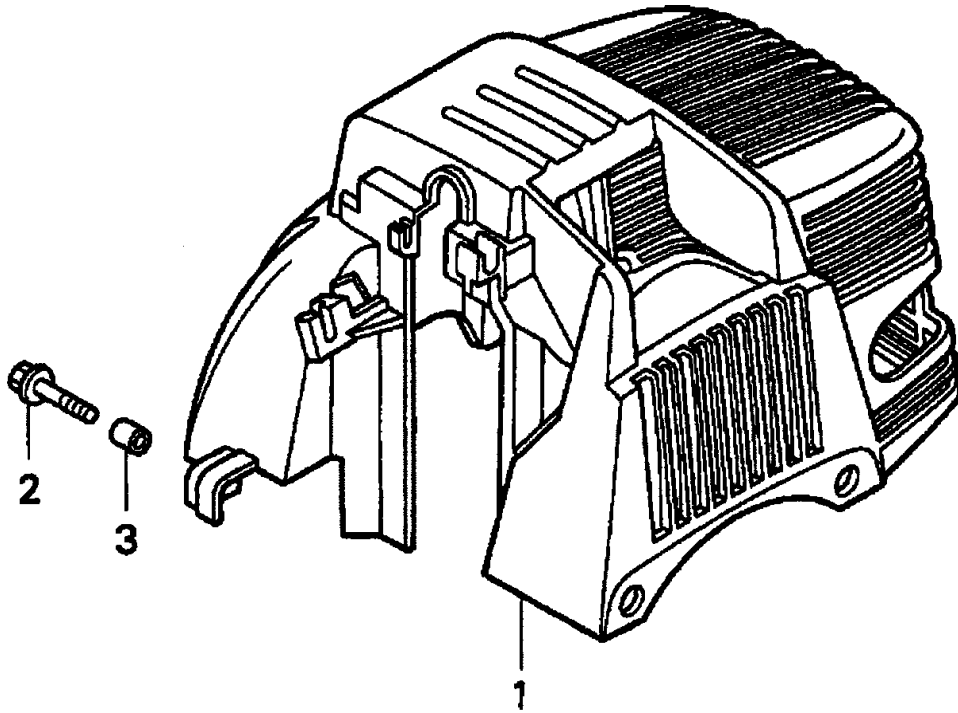


HONDA GX31SA ENGINE — CLUTCH/FAN COVER ASSY.

CLUTCH/FAN COVER ASSY.

<u>NO.</u>	<u>PART NO.</u>	<u>PART NAME</u>	<u>QTY.</u>	<u>REMARKS</u>
1	19611ZM5000	COVER, FAN	1	
2	22000ZM5003	CLUTCH ASSY.	1	
3	22253ZM5003	BOLT, CLUTCH (8MM)	2	
4	22254ZM5003	WASHER, CLUTCH (8X17)	2	
5	90005ZM3000	BOLT, FLANGE (5X18)	2	

HONDA GX31SA ENGINE — ENGINE COVER ASSY.



HONDA GX31SA ENGINE — ENGINE COVER ASSY.

ENGINE COVER ASSY.

<u>NO.</u>	<u>PART NO.</u>	<u>PART NAME</u>	<u>QTY.</u>	<u>REMARKS</u>
1	19720ZM3000ZA	COVER COMP., TOP *R8*	1	BRIGHT RED
2	90112GK8010	BOLT, FLANGE (5X22)	2	
3	91502ZM3000	COLLAR, TOP COVER	2	