

OPERATION AND PARTS MANUAL



MODEL DM15A9C CORE DRILL MOTOR & MODEL CDM2CSA DRILL RIG STAND

Revision #2 (09/04/19)

THIS MANUAL MUST ACCOMPANY THE EQUIPMENT AT ALL TIMES.

Multiquip DM15A9C Electric Powered Core Drill and CDM2CSA Drilling Rig

Proposition 65 Warning	2
Silicosis Warning	3
Table Of Contents	4
Safety Message Alert Symbols	6
Rules For Safe Operation	7-9
General Information	10-11
Specifications/Dimensions(DM15A9C)	12
Dimensions (CDM2CSA)	13
Components (CDM2CSA Drilling Rig)	14
Components (DM15A9C Electric Motor)	14
Pre-Set-up	16-20
Operation	21
Shutdown	22
Maintenance	23
Troubleshooting	24
Explanation Of Code In Remarks Column	26
Suggested Spare Parts	27
Nameplate and Decals	28-29
Electric Motor Assembly	30-33
Drilling Rig Assembly	34-35
Cradle Assembly	36-37
Tools	38-39

DM15A9C/CDM2CSA— SUGGESTED SPARE PARTS

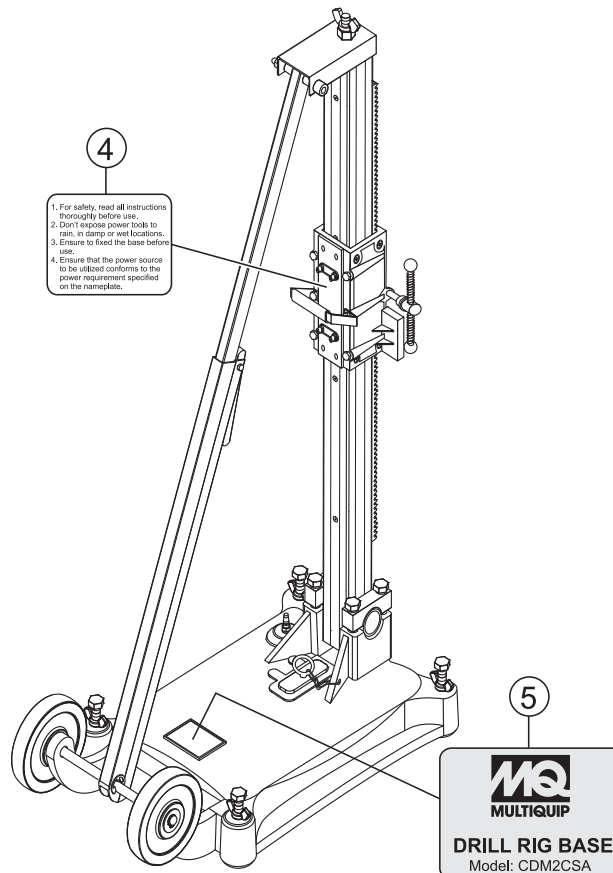
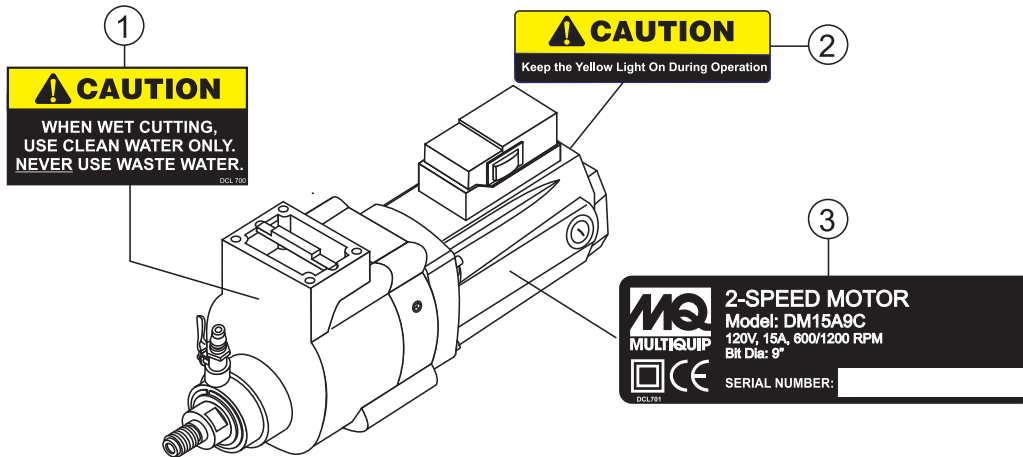
DM15A9C/CDM2CSA Core Drill and Drilling Rig

1 to 5 Units

Qty.....	P/N	Description
2	CD290057	CARBON BRUSH
2	CD290062	POWER CORD
2	CD290065	POWER SWITCH

DM15A9C/CDM2CSA— NAMEPLATE AND DECALS

NAMEPLATE AND DECALS



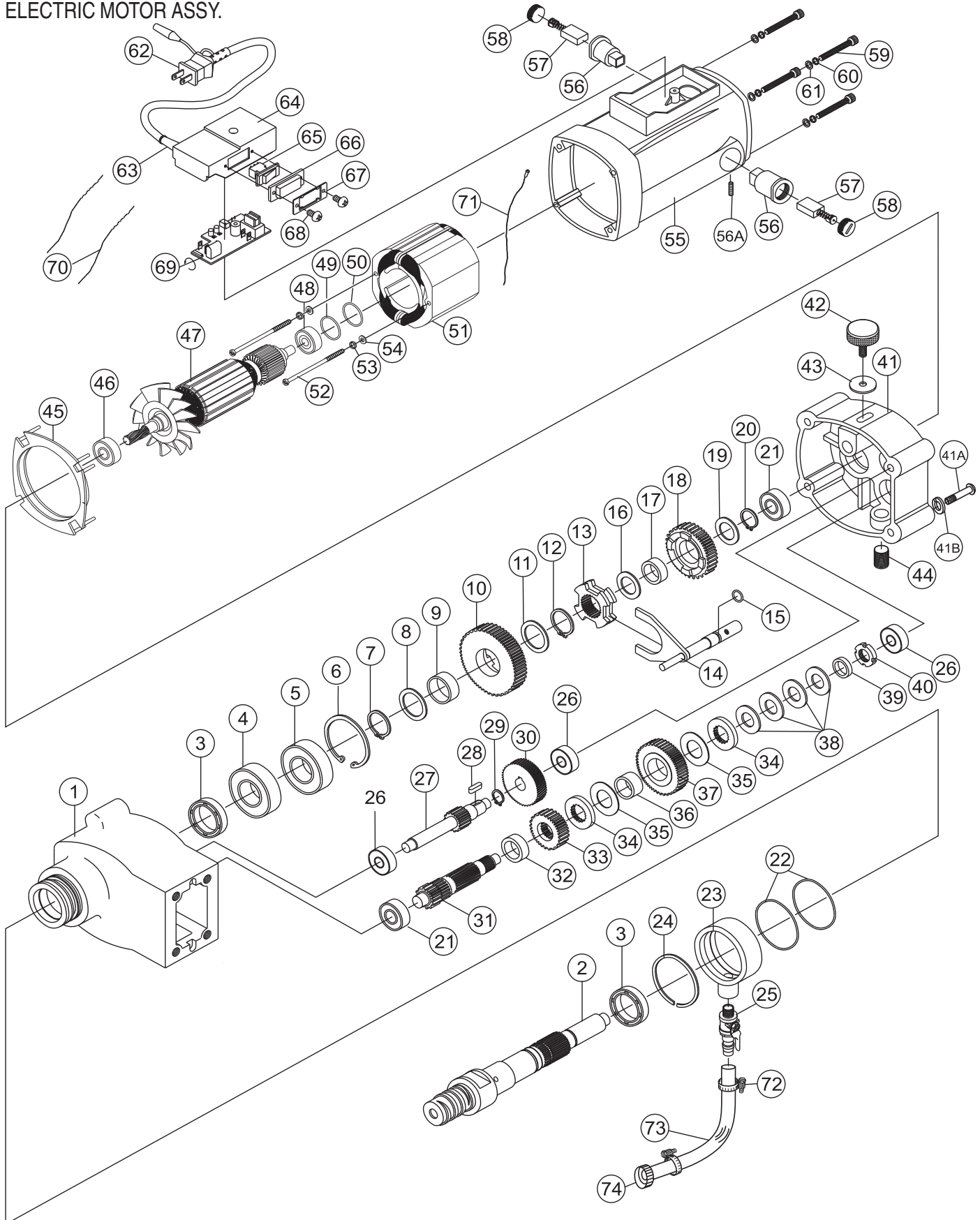
DM15A9C/CDM2CSA— NAMEPLATE AND DECALS

NAMEPLATE AND DECALS

<u>NO.</u>	<u>PART NO.</u>	<u>PART NAME</u>	<u>QTY.</u>	<u>REMARKS</u>
1	DCL700	DECAL: CAUTION CLEAN WATER	1	
2	CDL001	DECAL: CAUTION, OPERATION LIGHT	1	
3	DCL704	DECAL: MODEL INFORMATION	1	
4	CDL002	DECAL: INSTRUCTIONS	1	
5	CDB001	DECAL: MQ LOGO	1	

DM15A9C — ELECTRIC MOTOR ASSEMBLY

ELECTRIC MOTOR ASSY.



DM15A9C — ELECTRIC MOTOR ASSEMBLY

ELECTRIC MOTOR ASSY.

<u>NO.</u>	<u>PART NO.</u>	<u>PART NAME</u>	<u>QTY.</u>	<u>REMARKS</u>
1	CD290001	GEAR CASE	1	
2	CD290002	MAIN SHAFT	1	
3	CD290003	SEAL, 34X48X8 MM	1	
4	CD290004	BEARING, 6206LLU	1	
5	CD290005	BEARING, 6206ZZ	1	
6	CD290006	SNAP RING, R62	1	
7	CD290007	SNAP RING, S30	1	
8	CD290008	METAL COLLAR	1	
9	CD290009	METAL COLLAR	1	
10	CD290010	FIRST GEAR	1	
11	CD290011	METAL COLLAR	1	
12	CD290012	SNAP RING, S29	1	
13	CD290013	SHIFT RING	1	
14	CD290014	SHIFT LEVER	1	
15	CD290015	O-RING, 11X2.0 MM	1	
16	CD290016	METAL COLLAR	1	
17	CD290017	METAL	1	
18	CD290018	SECOND GEAR	1	
19	CD290019	METAL COLLAR	1	
20	CD290020	SNAP RING, S22	1	
21	CD290021	BEARING, 6202ZZ	1	
22	CD290022	O-RING, 60X2.0 MM	1	
23	CD290023	WATER SUPPLY COVER	1	
24	CD290024	SNAP RING, IS63	1	
25	CD290025	WATER COCK	1	
26	CD290026	BEARING, 6201ZZ	1	
27	CD290027	FIRST PINION	1	
28	CD290028	WOODRUFF KEY, 5X5X12 MM	1	
29	CD290029	SNAP RING, S15	1	
30	CD290030	THIRD GEAR	1	
31	CD290031	SECOND GEAR	1	
32	CD290032	SPACER	1	
33	CD290033	FORTH GEAR	1	
34	CD290034	PLATE	2	
35	CD290035	FRICTION PLATE	2	
36	CD290036	METAL	1	
37	CD290037	FIFTH GEAR	1	
38	CD290038	DISK SPRING, 35.2X18.3X2.0 MM	4	
39	CD290039	METAL COLLAR	1	
40	CD290040	FINE U-NUT	1	
41	CD290041	DIAPHRAGM	1	
41A	CD2900411	DIAPHRAGM SCREW, M8 60	4	
41B	CD2900412	DIAPHRAGM LOCK WASHER, M8	4	
42	CD290042	SPEED CHANGE KNOB	1	
43	CD290043	RUBBER WASHER	1	
44	CD290044	PLUG, 1/8"	1	
45	CD290045	BAFFLE	1	
46	CD290046	BEARING, 6201LLU	1	
47	CD290047	ARMATURE	1	
48	CD290048	BEARING, 6200ZZ	1	
49	CD290049	FILING RING, 6200	1	
50	CD290050	O-RING	1	
51	CD290051	FIELD	1	
52	CD290052	FIELD SCREW, M5X85 MM	2	

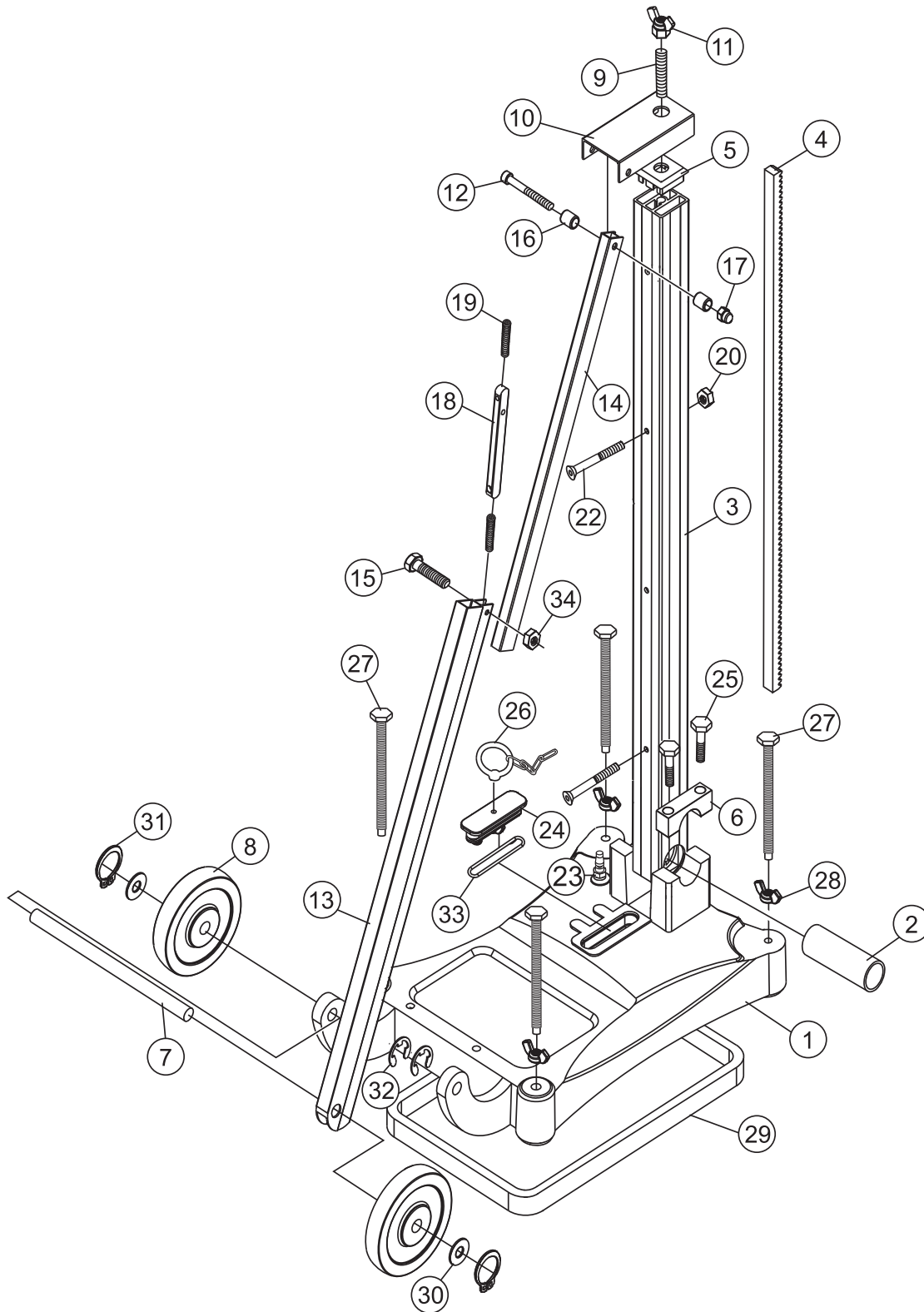
DM15A9C — ELECTRIC MOTOR ASSEMBLY

ELECTRIC MOTOR ASSY.

<u>NO.</u>	<u>PART NO.</u>	<u>PART NAME</u>	<u>QTY.</u>	<u>REMARKS</u>
53	CD290053	WASHER, LOCK 5 MM	2	
54	CD290054	WASHER, FLAT 5 MM	2	
55	CD290055	MOTOR HOUSE	1	
56	CD290056	BRUSH TUBE	2	
56A	CD5900561	BRUSH TUBE SCREW, M5X10 MM	2	
57	CD290057	CARBON BRUSH	2	
58	CD290058	BRUSH COVER	2	
59	CD290059	SCREW, M6X45 MM	4	
60	CD290060	WASHER, LOCK 6MM	4	
61	CD290061	WASHER, FLAT 6MM	4	
62	CD290062	ELECTRIC CABLE	1	
63	CD290063	RUBBER TUB	1	
64	CD290064	SWITCH BOX	1	
65	CD290065	SWITCH	1	
66	CD290066	SWITCH COVER	1	
67	CD290067	SWITCH PLATE	1	
68	CD290068	SWITCH SCREW, 1/8 X 1/4"	2	
69	CD290069	LED INDICATOR	1	
70	CD290070	CABLE	1	
71	CD290071	EARTH CABLE	1	
72	CD101569	HOSE CLAMP	2	
73	CD101570	PLASTIC WATER HOSE, 4-INCH	1	
74	CD101571	FITTING, BRASS BARB 3/4 X 3/8"	1	

CDM2CSA — DRILLING RIG ASSEMBLY

DRILLING RIG ASSY.



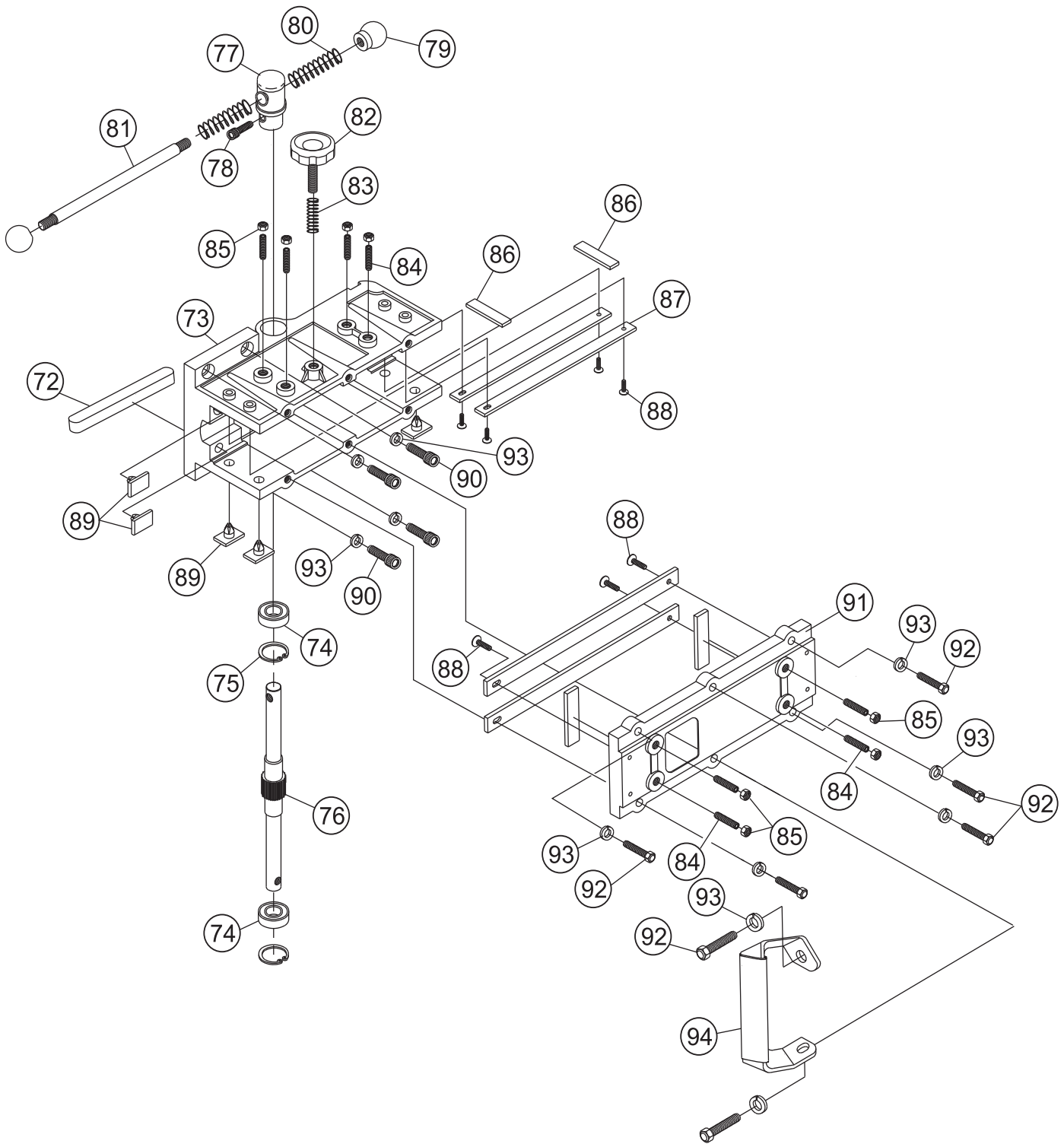
CDM2CSA — DRILLING RIG ASSEMBLY

DRILLING RIG ASSY.

<u>NO.</u>	<u>PART NO.</u>	<u>PART NAME</u>	<u>QTY.</u>	<u>REMARKS</u>
1	CD290072	BASE	1	
2	CD290073	POLE TUBE	1	
3	CD290074	POLE	1	
4	CD290075	RACK	1	
5	CD290076	POLE COVER	1	
6	CD290077	FIXED PLATE	2	
7	CD290078	WHEEL SHAFT	1	
8	CD290097	WHEELS, 4"	2	
9	CD290079	SCREW, M12X50 MM	1	
10	CD290080	METAL COVER	1	
11	CD290081	ADJUST NUT, M12	1	
12	CD290082	SCREW, M8X60 MM	1	
13	CD290083	ANGLE ADJUST TUBE-2	1	
14	CD290084	ANGLE ADJUST TUBE-1	1	
15	CD290085	SCREW, M6X20 MM	1	
16	CD290086	METAL COLLAR	1	
17	CD290087	NUT	1	
18	CD290088	SHIFTER	1	
19	CD290089	SCREW, M6X35 MM	1	
20	CD290090	NUT, M6	1	
21	CD290091	SPRING	1	
22	CD290092	SCREW, M6X55 MM	4	
23	CD290093	VALVE	1	
24	CD290094	AIR COVER	1	
25	CD290095	SCREW, M12X40 MM	4	
26	CD290096	CHAIN PIN	1	
27	CD290098	SCREW, M12X100 MM	4	
28	CD290099	NUT, M12	4	
29	CD290100	GASKET	1	
30	CD290101	WASHER	4	
31	CD290102	S-RING, S1/2	2	
32	CD290103	E-RING, E12	2	
33	CD290104	O-RING, 3X53 MM	1	
34	CD290105	NUT, M6	1	

CDM2CSA — CRADLE ASSEMBLY

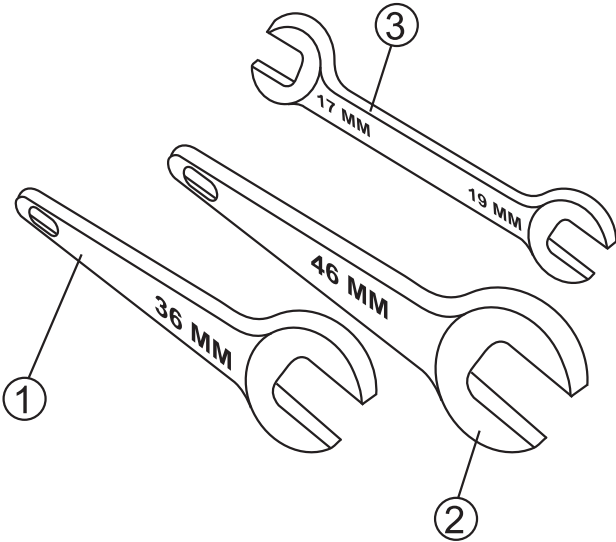
CRADLE ASSY.



CRADLE ASSY.

<u>NO.</u>	<u>PART NO.</u>	<u>PART NAME</u>	<u>QTY.</u>	<u>REMARKS</u>
72	CD2704023	KEY, 10X10X105 MM	1	
73	CD2704064	FEEDING HOUSE	1	
74	CD2704065	BEARING, 6003ZZ	2	
75	CD2704066	SNAP RING	2	
76	CD2704067	FEED SHAFT	1	
77	CD2704071	FEEDING HEAD	1	
78	CD2704068	SCREW, M8X25 MM	1	
79	CD2704069	KNOB	2	
80	CD2704070	SPRING	2	
81	CD2704072	FEEDING HANDLE	1	
82	CD2704073	KNOB BOLT	1	
83	CD2704074	SPRING	1	
84	CD2704075	SET SCREW, M6X20 MM	6	
85	CD2704076	HEX, NUT, M6	8	
86	CD2704077	PLATE	4	
87	CD2704078	FRI CTION PLATE-LONG	4	
88	CD2704079	SCREW, 5/32X1/2"	8	
89	CD2704080	FRICTION PLATE-SHORT	8	
90	CD2704081	SCREW, M8X30 MM	4	
91	CD2704082	FEEDING HOUSE COVER	1	
92	CD2704083	SCREW, M8X20 MM	6	
93	CD2704110	WASHER, LOCK M8	10	
94	CD2704085	HANDLE	1	

TOOLS



TOOLS

<u>NO.</u>	<u>PART NO.</u>	<u>PART NAME</u>	<u>QTY.</u>	<u>REMARKS</u>
1	CD2704103	36 MM WRENCH	1	
2	CD290008	46 MM WRENCH	1	
3	CD290106	17/19 MM WRENCH	1	