

OPERATION AND PARTS MANUAL

STOW

A DIVISION OF MULTIQUIP INC.

CMS-4S CONCRETE MIXER

Revision #9 (03/07/17)

THIS MANUAL MUST ACCOMPANY THE EQUIPMENT AT ALL TIMES.

STOW CONCRETE MIXER — TABLE OF CONTENTS

STOW CMS-4S Concrete Mixer

| | |
|---|-------|
| Here's How To Get Help | 3 |
| Table Of Contents | 4 |
| Parts Ordering Procedures | 5 |
| Specifications | 6 |
| Dimensions (Mixer) | 7 |
| Safety Message Alert Symbols | 8 |
| Rules For Safe Operation | 9-10 |
| Operation and Safety Decals | 11 |
| General Information | 12 |
| Mixer Basic Components | 13 |
| Basic Engine Components | 14 |
| Handwheel Assembly | 15 |
| Towing Guidelines | 16 |
| Safety Chain Connection | 17 |
| Electric Motor | 18-19 |
| Pre-Inspection (Gasoline Engine) | 20 |
| Initial Start-up (Gasoline Engine) | 21 |
| Initial Start-up (Electric Motor) | 22 |
| Operation | 23 |
| Maintenance (Engine) | 24-25 |
| Maintenance (Mixer) | 26-28 |
| Troubleshooting (Engine) | 30 |
| Troubleshooting (Engine/Mixer) | 31 |
| Explanation Of Code In Remarks Column | 32 |
| Suggested Spare Parts | 33 |

Component Drawings

| | |
|--|-------|
| Nameplate and Decals | 34-35 |
| Mixer Assembly (Steel Drum) | 36-37 |
| Mixer Assembly (Plastic Drum) | 38-39 |
| Main Frame Assembly | 40-41 |
| Axle Assembly | 42-43 |
| Cabinet Assembly | 44-45 |
| Gas Engine Mounting Plate Asassembly | 46-47 |
| Electric Motor Mounting Plate Asassembly | 46-47 |

HONDA GX120K1QX2 ENGINE

| | |
|--------------------------------|-------|
| Air Cleaner Assy. | 48-49 |
| Camshaft Assy. | 50-51 |
| Carburetor Assy. | 52-53 |
| Control Assy. | 54-55 |
| Crankcase Cover Assy. | 56-57 |
| Crankshaft Assy. | 58-59 |
| Cylinder Barrel Assy. | 60-61 |
| Cylinder Head Assy. | 62-63 |
| Fan Cover Assy. | 64-65 |
| Flywheel Assy. | 66-67 |
| Fuel Tank Assssembly | 68-69 |
| Ignition Coil Assssembly | 70-71 |
| Muffler Assssembly | 72-73 |
| Piston Rings Assssembly | 74-75 |
| Recoil Starter Assssembly | 76-77 |
| Gasket Kit Assssembly | 78-79 |
| Labels Assssembly | 80-81 |

| | |
|--|----|
| Terms and Conditions of Sale - Parts | 82 |
|--|----|

STOW CMS-4 CONCRETE MIXER — OPERATION AND SAFETY DECALS

Machine Safety Decals

The STOW CMS-4 mixer is equipped with a number of safety decals (Figure 1A). These decals are provided for operator safety and maintenance information. The illustration below and on the next page shows these decals as they appear on the machine. Should any of these decals become unreadable, replacements can be obtained from your dealer.



P/N: 13118



CONTACT MQ PARTS
DEPARTMENT



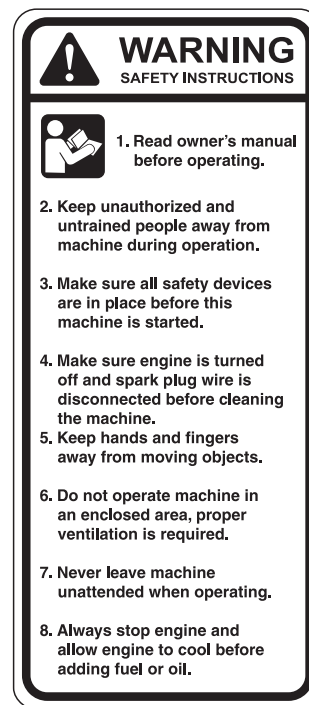
P/N: 510164



P/N: DCL151



P/N: CIPDCL160



P/N: 504713



P/N: 35137



P/N: EM948630

Figure 1A. STOW CMS-4 Mixer Decals

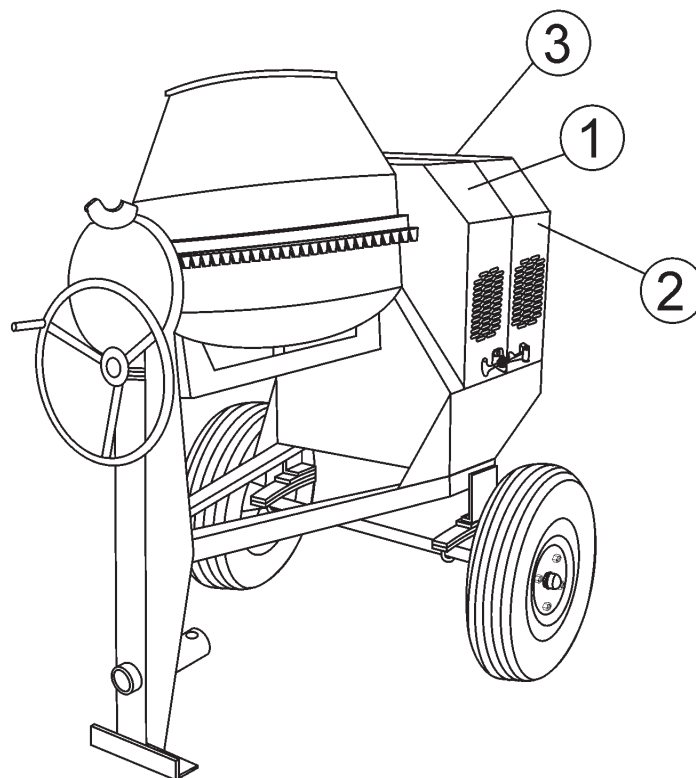
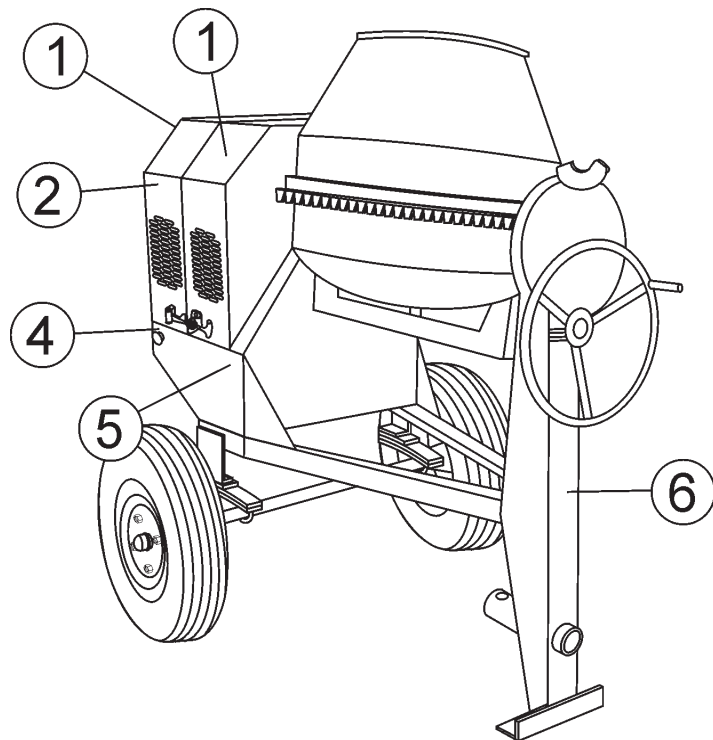
STOW CMS-4 CONCRETE MIXER — SUGGESTED SPARE PARTS

STOW CMS-4 CONCRETE MIXER 1 TO 4 UNITS WITH HONDA GX120K1QX2

| <u>Qty.</u> | <u>P/N</u> | <u>Description</u> |
|-------------|-------------|-------------------------------|
| 2 | 491115 | V-BELT |
| 1 | EM940734 | STOP BUTTON w/GAS ENGINE |
| 2 | 491010 | LATCH SET |
| 2 | EM903017 | SPINDLE BEARING CUP |
| 2 | EM903054 | SPINDLE BEARING CONES |
| 1 | EM505472 | SPACER, DRUM |
| 2 | 492179 | BEARING JACKSHAFT |
| 2 | EM914288 | SEAL, AXLE |
| 2 | EM903012 | BEARING CUP |
| 2 | EM903049 | BEARING CONE, 7/8" SPINDLE |
| 2 | EM903113 | BEARING CONE, 1-1/16" SPINDLE |
| 4 | 3469 | DUST CAP, AXLE |
| 4 | 17210ZE0505 | ELEMENT, AIR CLEANER |
| 4 | 9807955846 | SPARK PLUG |
| 1 | 28462ZH8003 | ROPE, RECOIL STARTER |

STOW CMS-4 CONCRETE MIXER — NAME PLATE AND DECALS

NAME PLATE AND DECALS



STOW CMS-4 CONCRETE MIXER— NAME PLATE AND DECALS

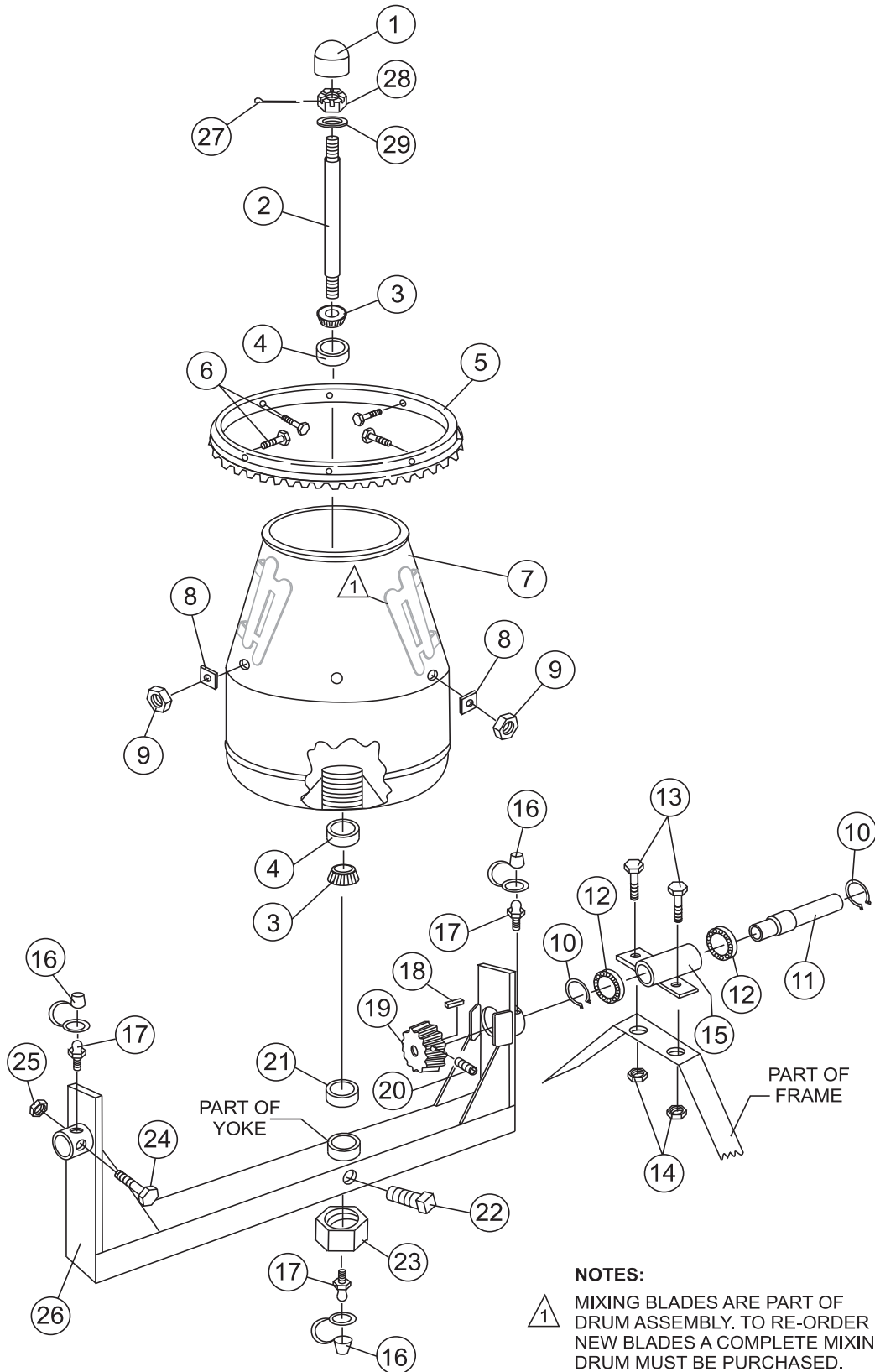
NAME PLATE AND DECALS

| <u>NO</u> | <u>PART NO</u> | <u>PART NAME</u> | <u>QTY.</u> | <u>REMARKS</u> |
|-----------|----------------|----------------------------|-------------|------------------------------|
| 1 | 510164 | DECAL, STOW LOGO | 3 | |
| 2 | CIPDCL160 | DECAL, CRUSH WARNING | 2 | |
| 3 | 504713 | DECAL, SAFETY INSTRUCTIONS | 1 | |
| 4 | EM948630 | DECAL, EMERGENCY STOP | 1 | |
| 5 | DCL151 | DECAL, TOWING INSTRUCTIONS | 1 | |
| 6 | 13118 | DECAL, POWDER COATED | 1 | |
| 7 | | NAMEPLATE | 1 | CONTACT MQ PARTS DEPT. |

SEE OPERATION AND SAFETY DECALS PAGE.

STOW CMS-4 — STEEL BARREL

STEEL BARREL ASSY.



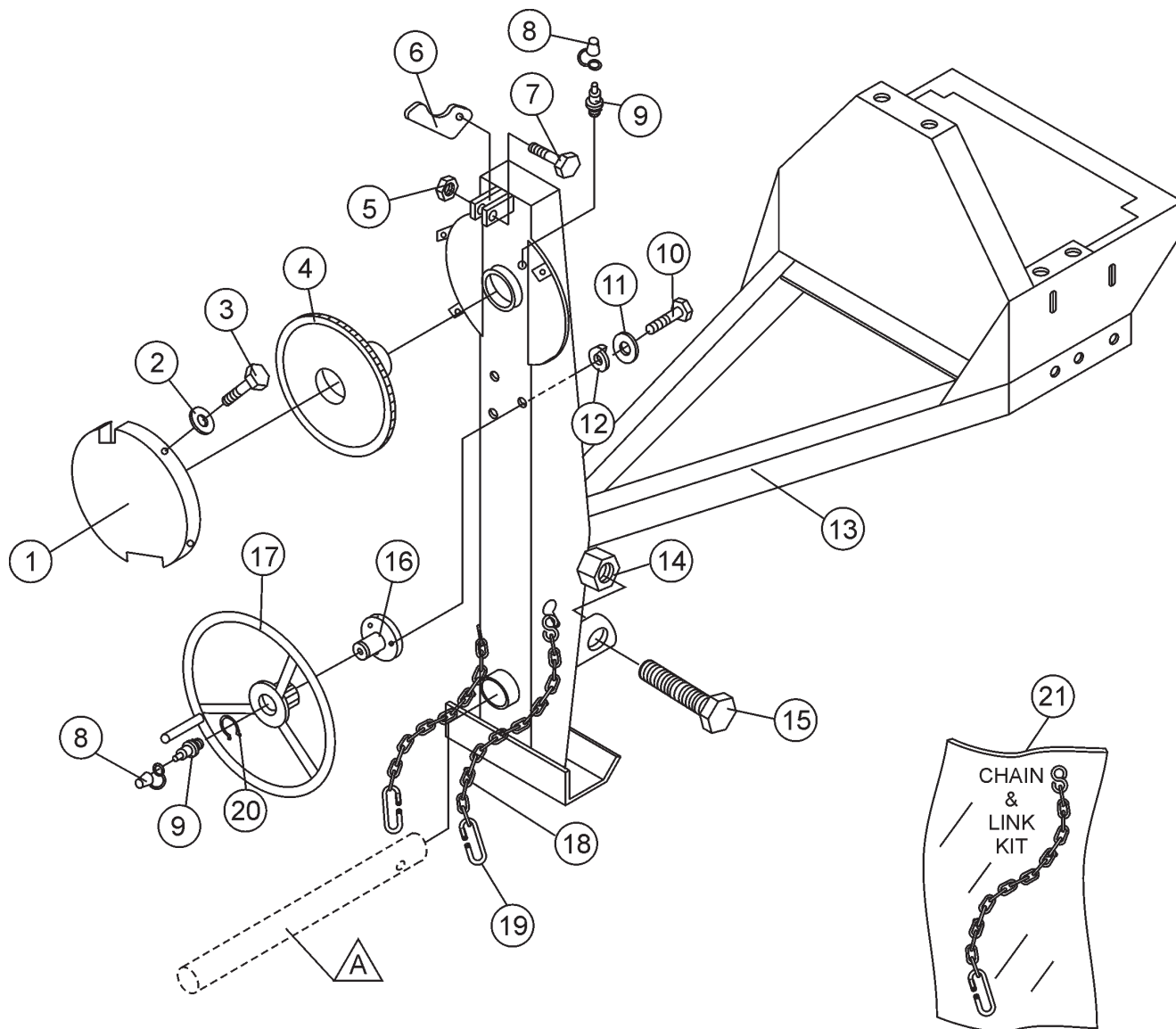
STOW CMS-4 — STEEL BARREL

STEEL BARREL ASSY.

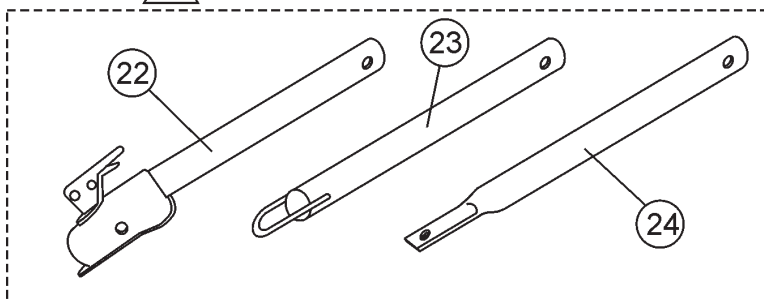
| <u>NO</u> | <u>PART NO</u> | <u>PART NAME</u> | <u>QTY.</u> | <u>REMARK</u> |
|-----------|----------------|---------------------------------|-------------|-----------------|
| 1 | 500904 | CAP | 1 | |
| 2 | 501867 | KING PIN | 1 | |
| 3 | EM903054 | SPINDLE BEARING 5/8" CONE | 2 | REPLACES 492154 |
| 4 | EM903017 | SPINDLE BEARING CUP | 2 | REPLACES 492233 |
| 5 | 502427 | RING GEAR | 1 | |
| 6 | EM963610 | BOLT 3/8" NC 1-1/4" G5 | 6 | |
| 7 | 502449Y | BARREL, STEEL 4 CU. FT. | 1 | |
| 8 | 511732 | SHIM 0.25 THICK | AR | |
| 8 | 511731 | SHIM .187 THICK | AR | |
| 8 | 511730 | SHIM .140 THICK | AR | |
| 9 | EM969013 | NUT, LOCK 3/8" NC | 5 | |
| 10 | 490956 | RING, RETENTION | 2 | |
| 11 | 502019 | DRIVE PINION SHAFT | 1 | |
| 12 | 493296 | PINION SHAFT BEARING | 2 | |
| 13 | EM963692 | BOLT 1/2" NC X 1-1/2" G5 | 2 | |
| 14 | 492584 | LOCKNUT, HEX 1/2" NC | 2 | |
| 15 | 502018Y | HOUSING JACKSHAFT | 1 | |
| 16 | 491008 | CAP, GREASE FITTING | 3 | |
| 17 | EM916001 | GREASE FITTING 1/8" NPT | 3 | REPLACES 491698 |
| 18 | 500214 | SQUARE KEY 1/4" X 30 MM | 1 | |
| 19 | 501917 | DRIVE PINION | 1 | |
| 20 | 492467 | ALLEN SCREW 5/16 NC 3/8" | 1 | |
| 21 | 505680 | SPACER, BARREL | 1 | |
| 22 | 492483 | SET SCREW 3/8" X 1- 1/4" NC | 1 | |
| 23 | 500601 | NUT, HEX LOWER 1" | 1 | REPLACES 492579 |
| 24 | EM963102 | BOLT 1/2" NC X 1-1/4" NC | 2 | |
| 25 | 492584 | LOCKNUT, HEX 1/2" NC | 2 | |
| 26 | 502016Y | YOKE | 1 | |
| 27 | 491685 | COTTER PIN 3/32" X 2" | 1 | |
| 28 | 500600 | CASTLE NUT 1" | 1 | |
| 29 | 501269 | SPACER | 1 | |

STOW CMS-4 — MAIN FRAME ASSEMBLY

MAIN FRAME ASSY.



A OPTIONAL TOW BARS



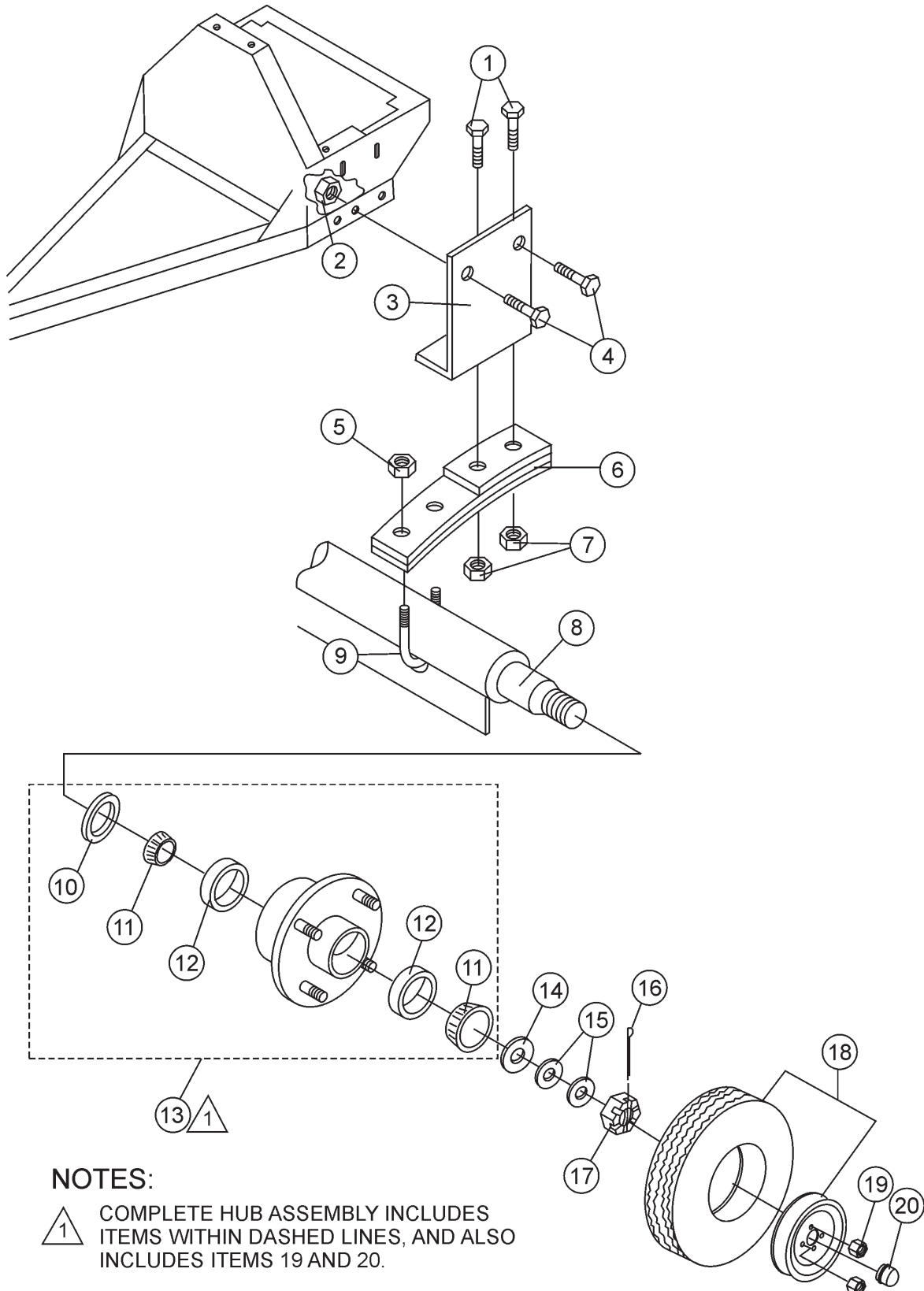
STOW CMS-4 — MAIN FRAME ASSEMBLY

MAIN FRAME ASSY.

| <u>NO</u> | <u>PART NO</u> | <u>PART NAME</u> | <u>QTY.</u> | <u>REMARK</u> |
|-----------|----------------|---------------------------------------|-------------|--------------------|
| 1 | 501844Y | GUARD, GEAR WHEEL | 1 | |
| 2 | 2101402 | WASHER, LOCK 1/4" | 4 | |
| 3 | 492284 | ROUND HEAD BOLT 1/4" NC 3/8 G2" | 4 | REPLACES 492279 |
| 4 | 502017 | DUMP GEAR | 1 | |
| 5 | EM969013 | NUT, LOCK 3/8" NC | 1 | |
| 6 | 490896Y | DUMP LATCH | 1 | |
| 7 | EM963610 | BOLT 3/8" NC X 1-1/2" G5 | 1 | |
| 8 | EM916001 | GREASE FITTING 1/8" NPT | 2 | REPLACES 491698 |
| 9 | 491008 | GREASE CAP | 2 | |
| 10 | EM963055 | ALLEN BOLT 3/16" NS X 5/8" | 4 | |
| 11 | 492621 | WASHER, LOCK 3/16" | 4 | |
| 12 | 495595 | WASHER, FLAT 3/16" | 4 | |
| 13 | 502448Y | FRAME | 1 | |
| 14 | 10176 | LOCK NUT 1/2 NC | 1 | REPLACES 492586 |
| 15 | EM124 | BOLT 1/2"- 13 X 4 G5 | 1 | |
| 16 | 500596 | HANDWHEEL SHAFT | 1 | |
| 17 | 501902Y | HANDWHEEL | 1 | |
| 18* | | SAFETY CHAIN | 1 | REPLACES 13363 |
| 19* | 01004 | CONNECTOR LINK | 2 | |
| 20 | 490958 | RING RETAINING | 1 | |
| 21 | 13363KIT | CHAIN LINK KIT | 1 | INCLUDES ITEMS W/* |
| 22 | HBC-1 | BALL HITCH 2-INCH | 1 | CONTACT UNIT SALES |
| 23 | HLC-1 | LOOP HITCH | 1 | CONTACT UNIT SALES |
| 24 | HPC-1 | PIN HITCH 1-INCH | 1 | CONTACT UNIT SALES |

STOW CMS-4 — AXLE ASSEMBLY

AXLE ASSY.



NOTES:

- △ 1 COMPLETE HUB ASSEMBLY INCLUDES ITEMS WITHIN DASHED LINES, AND ALSO INCLUDES ITEMS 19 AND 20.

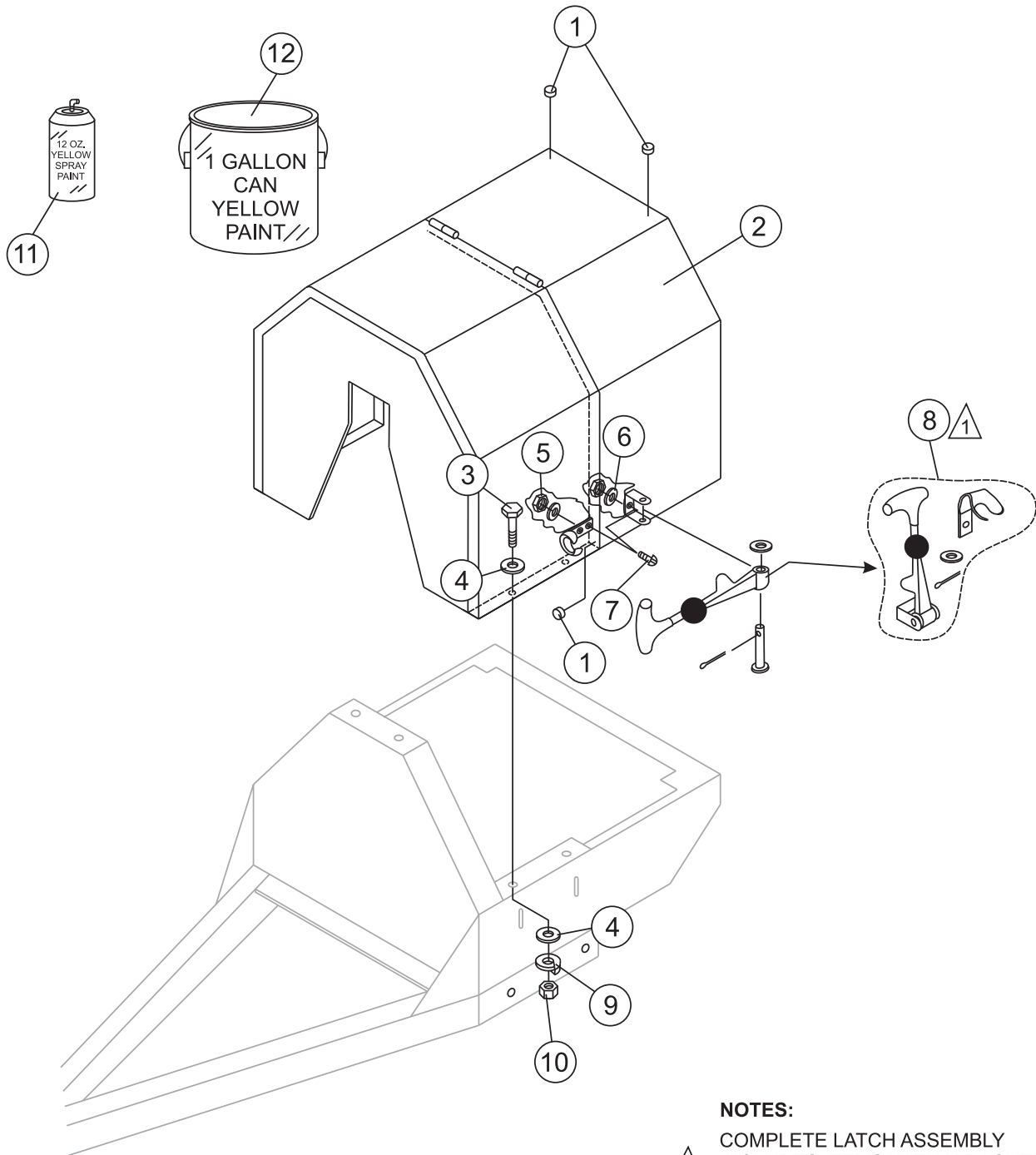
STOW CMS-4 — AXLE ASSEMBLY

AXLE ASSY.

| <u>NO</u> | <u>PART NO</u> | <u>PART NAME</u> | <u>QTY.</u> | <u>REMARK</u> |
|-----------|----------------|---|-------------|---------------------------------------|
| 1 | EM969023 | LOCK NUT 5/8" NC | 4 | |
| 2 | 4922406 | BOLT 5/8" NC 1-1/2" G5 | 4 | |
| 3*# | EM914288 | OIL SEAL | 2 | |
| 4* | EM903049 | BEARING CONE, (7/8" SPINDLE) | 4 | |
| 4# | EM903113 | BEARING CONE, (1-1/16" SPINDLE) | 4 | |
| 5*# | EM903012 | BEARING CUP | 4 | |
| 6 | 3504 | HUB ASSY., 4-BOLT (7/8" SPINDLE) | 2 | INCLUDES ITEMS W/* REPLACES 493235 |
| 6 | EM941306 | HUB ASSY., 4-BOLT (1-1/16" SPINDLE) | 2 | INCLUDES ITEMS W/# |
| 7 | EM511159 | WASHER, FLAT, .087" THICKNESS | 2 | |
| 8 | EM501299 | WASHER, FLAT, .135" THICKNESS | AR | |
| 9 | 491688 | COTTER PIN 1/8" X 1-1/2' | 2 | |
| 10 | 12426 | NUT, SLOTTED HEX JAM 3/4"- 20 | 2 | |
| 10 | 8164 | NUT, SLOTTED HEX JAM 3/4"- 20 | 2 | |
| 11 | 3005 | TIRE AND RIM, CARLISE | 2 | |
| 11 | 493236C | TIRE AND RIM, UNIROYAL | 2 | |
| 12*# | 8115 | LUG NUTS | 8 | |
| 13*# | 3469 | DUST CAP | 2 | |
| 14 | 501960 | AXLE 7/8" SPINDLE | 1 | |
| 14 | 511335 | AXLE 1-1/16 SPINDLE | 1 | |

STOW CMS-4 — CABINET ASSEMBLY

CABINET ASSY.



NOTES:



COMPLETE LATCH ASSEMBLY
INCLUDES ITEMS WITHIN DASHED
LINES. ITEMS CANNOT BE PURCHASED
SEPARATELY.

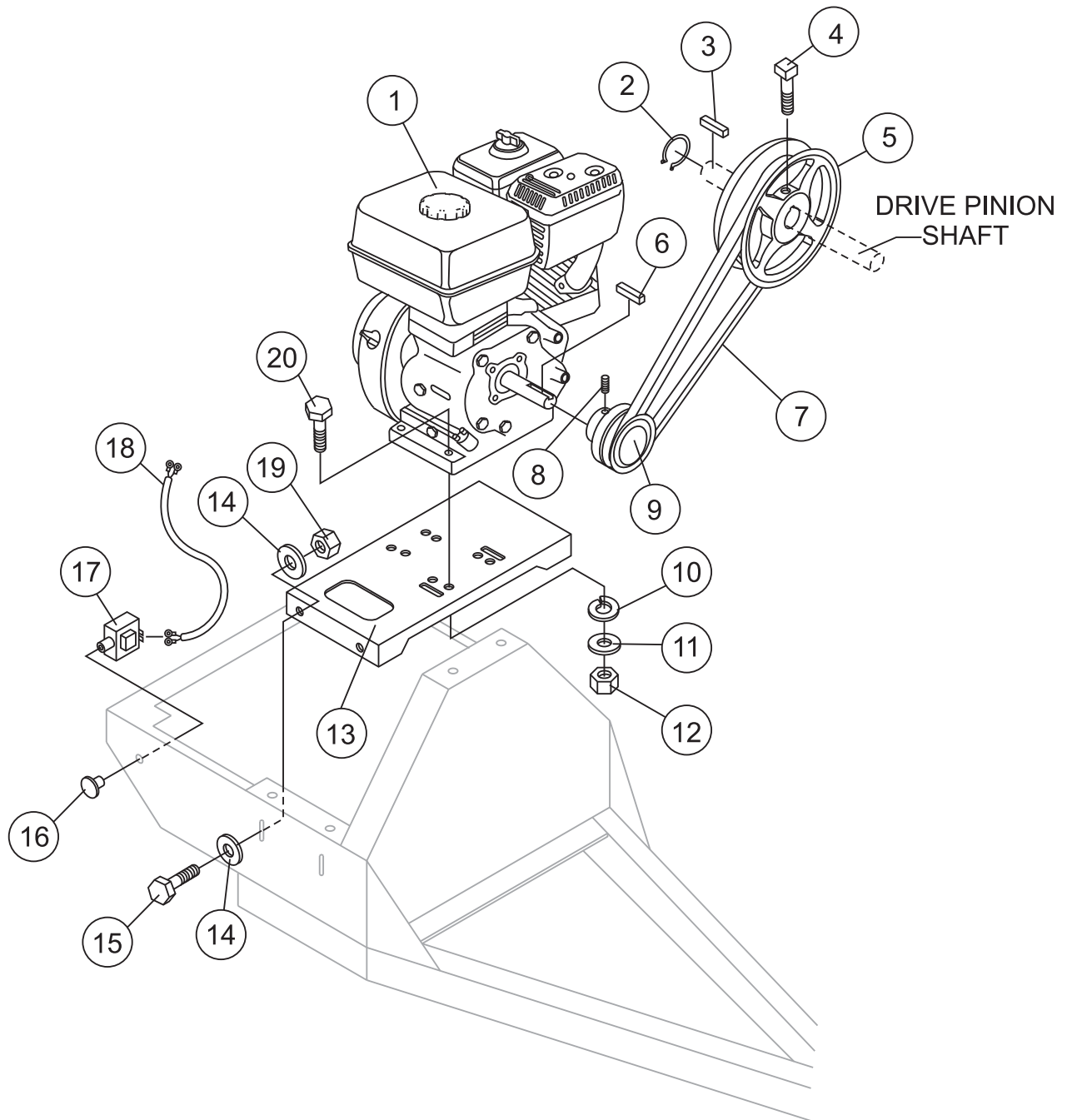
STOW CMS-4 — CABINET ASSEMBLY

CABINET ASSY.

| <u>NO</u> | <u>PART NO</u> | <u>PART NAME</u> | <u>QTY.</u> | <u>REMARKS</u> |
|-----------|----------------|--|-------------|-----------------------|
| 1 | 490202 | RUBBER PROTECTOR | 4 | |
| 2 | 501954Y | ENGINE HOUSING CABINET, W/DECALS | 1 | INCLUDES ITEM W/* |
| 3 | 492363 | BOLT 5/16" NC X 3/4" G5 | 4 | |
| 4 | EM923023 | WASHER, FLAT 5/16" | 8 | |
| 5 | 13287 | LOCK NUT 8-32 | 6 | REPLACEMENT PART ONLY |
| 6 | 2203 | WASHER, FLAT #10 | 6 | REPLACEMENT PART ONLY |
| 7 | 1307 | RHMS 8-32 X 1/2" | 6 | REPLACEMENT PART ONLY |
| 8* | 491010 | LATCH ASSY., COMPLETE | 2 | |
| 9 | EM923343 | WASHER, LOCK 5/16" | 4 | |
| 10 | 2105164 | NUT 5/16" NC G5 | 4 | |
| 11 | RAL1003S | PAINT, SPRAY CAN 12 OZ., YELLOW | AR | |
| 12 | RAL1003G | PAINT, GALLON CAN, YELLOW | AR | |

STOW CMS-4 — GAS ENGINE MOUNTING PLATE ASSEMBLY

GAS ENGINE MOUNTING PLATE ASSY.



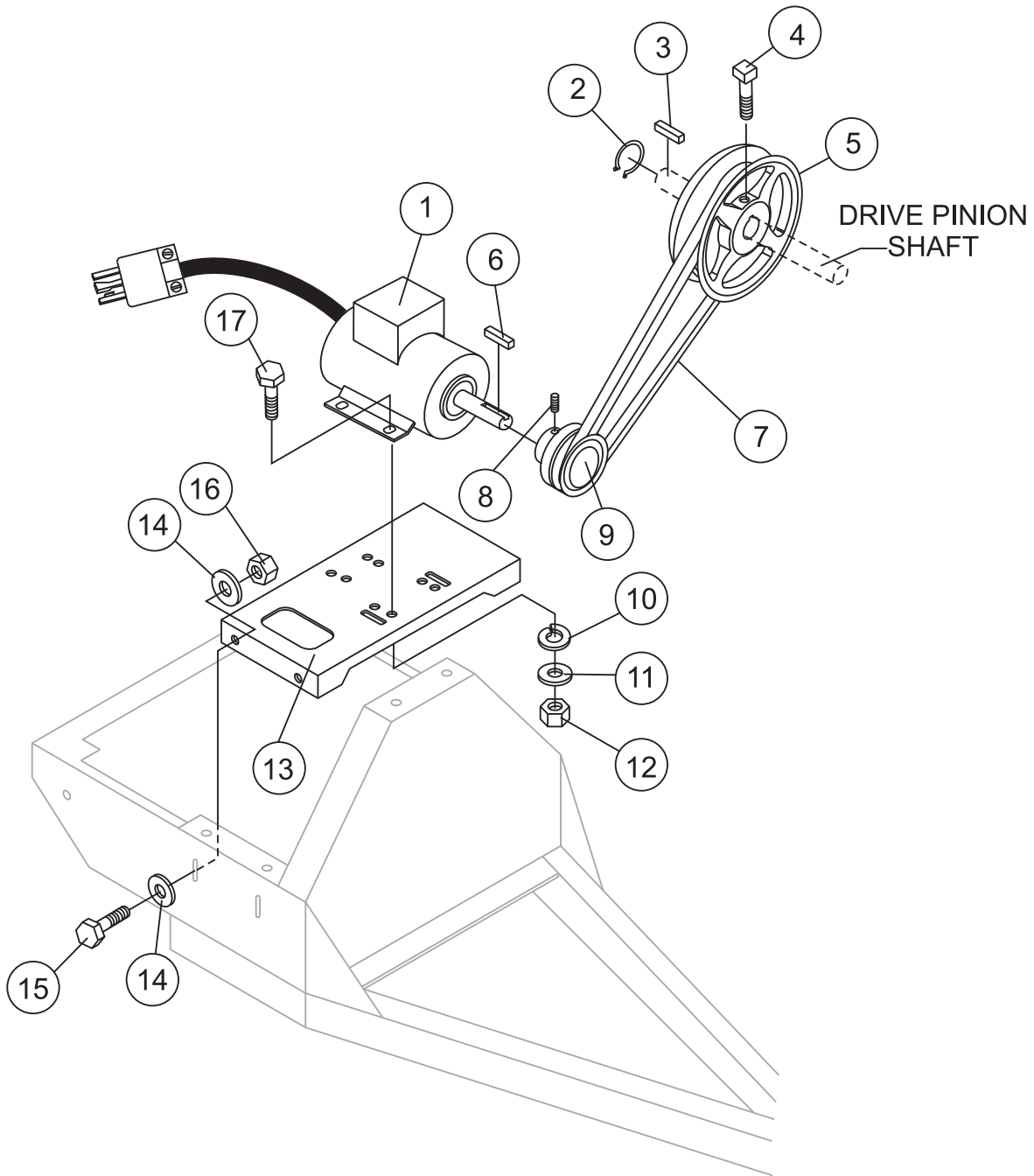
STOW CMS-4 — GAS ENGINE MOUNTING PLATE ASSEMBLY

GAS ENGINE MOUNTING PLATE ASSY.

| <u>NO</u> | <u>PART NO</u> | <u>PART NAME</u> | <u>QTY.</u> | <u>REMARKS</u> |
|-----------|----------------|-----------------------------|-------------|-----------------|
| 1 | GX120K1QX2 | ENGINE, HONDA 4.0 HP | 1 | |
| 2 | 490956 | RING, RETAINING | 1 | |
| 3 | 500246 | SQUARE KEY | 1 | |
| 4 | EM961045 | SET SCREW 5/16" NC X 3/4" | 1 | |
| 5 | 492066 | UPPER PULLEY | 1 | |
| 6 | 501019 | SQUARE KEY 3/16" X 45 MM | 1 | |
| 7 | 491115 | V-BELT A-46 | 1 | |
| 8 | 492467 | ALLEN SCREW 5/16" NC X 3/8" | 1 | |
| 9 | 492065 | DRIVE PULLEY 4.0 HP | 1 | |
| 10 | EM923343 | WASHER, LOCK 5/16" | 4 | |
| 11 | EM923023 | WASHER, FLAT 5/16" | 4 | |
| 12 | 2105164 | NUT, HEX 5/16 X18 NC G5 | 4 | |
| 13 | 502023Y | BASE PLATE ENGINE | 1 | |
| 14 | 492600 | WASHER, FLAT 1/2" | 8 | |
| 15 | EM963692 | BOLT, HEX 1/2" NC 1-1/2" G5 | 4 | |
| 16 | 29174-001 | BUTTON, STOP | 1 | |
| 17 | EM940734 | SWITCH, STOP | 1 | REPLACES 491845 |
| 18 | 503600 | ENGINE CABLE HARNESS | 1 | |
| 19 | 492584 | LOCKNUT 1/2" | 4 | |
| 20 | 492367 | BOLT 5/16" X 1-3/4" G5 | 4 | |

STOW CMS-4 — ELECTRIC MOTOR MOUNTING PLATE ASSEMBLY

ELECTRIC MOTOR MOUNTING PLATE ASSY.



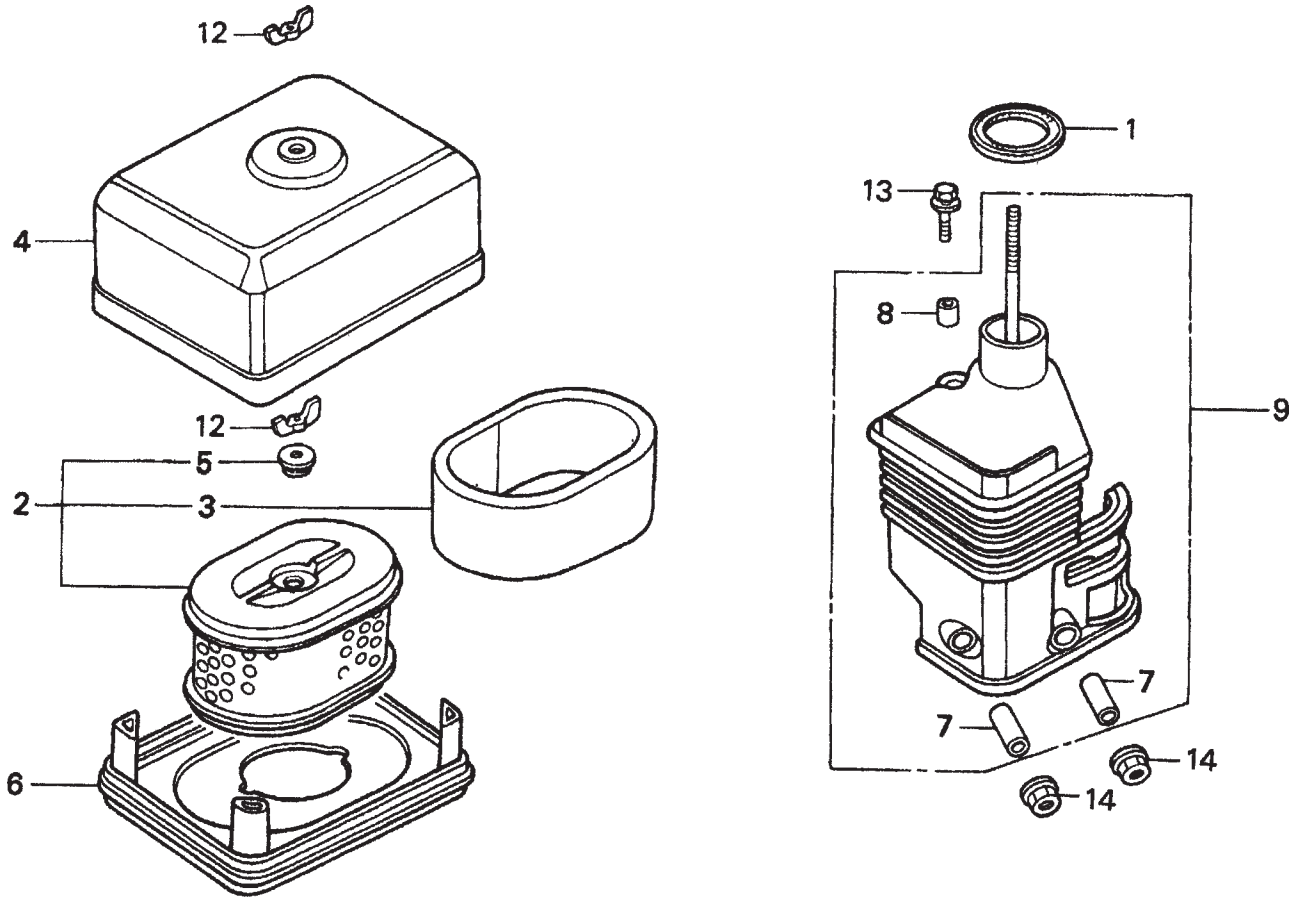
STOW CMS-4 — ELECTRIC MOTOR MOUNTING PLATE ASSEMBLY

ELECTRIC MOTOR MOUNTING PLATE ASSY.

| <u>NO</u> | <u>PART NO</u> | <u>PART NAME</u> | <u>QTY.</u> | <u>REMARKS</u> |
|-----------|----------------|-----------------------------|-------------|----------------|
| 1 | 34F3245596 | MOTOR, ELECTRIC .5 HP | 1 | |
| 2 | 490956 | RING, RETAINING | 1 | |
| 3 | 500246 | SQUARE KEY | 1 | |
| 4 | EM961045 | SET SCREW 5/16" NC X 3/4" | 1 | |
| 5 | 492066 | UPPER PULLEY | 1 | |
| 6 | 501019 | SQUARE KEY 3/16" X 45 MM | 1 | |
| 7 | 491115 | V-BELT, A46 | 1 | |
| 8 | 492467 | ALLEN SCREW 5/16" NC X 1/2" | 1 | |
| 9 | 492067 | DRIVE PULLEY | 1 | |
| 10 | EM923343 | WASHER, LOCK 5/16" | 4 | |
| 11 | EM923023 | WASHER, FLAT 5/16" | 4 | |
| 12 | 2105164 | NUT, HEX 5/16 X18 NC G5 | 4 | |
| 13 | 502023Y | BASE PLATE ENGINE | 1 | |
| 14 | 492600 | WASHER, FLAT 1/2" | 8 | |
| 15 | EM963692 | BOLT, HEX 1/2" NC 1-1/2" G5 | 4 | |
| 16 | 492584 | LOCKNUT 1/2" | 4 | |
| 17 | 492367 | BOLT 5/16" X 1-3/4" | 4 | |

HONDA GX120K1QX2 — AIR CLEANER ASSY.

AIR CLEANER ASSY.



HONDA GX120K1QX2 — AIR CLEANER ASSY.

AIR CLEANER ASSY.

| <u>NO.</u> | <u>PART NO.</u> | <u>PART NAME</u> | <u>QTY.</u> | <u>REMARKS</u> |
|------------|-----------------|-----------------------------------|-------------|--------------------|
| 1 | 16271ZE1000 | GASKET, ELBOW | 1 | |
| 2 | 17210ZE0505 | ELEMENT, AIR CLEANER (DUAL) | 1 | INCLUDES ITEMS W/* |
| 3* | 17218ZE0505 | FILTER, OUTER | 1 | |
| 4 | 17230ZE0820 | COVER, AIR CLEANER (DUAL) | 1 | |
| 5* | 17232891000 | GROMMET, AIR CLEANER | 1 | |
| 7# | 17238ZE0010 | COLLAR, AIR CLEANER | 2 | |
| 8# | 17239ZE1000 | COLLAR B, AIR CLEANER | 1 | |
| 9 | 17410ZE0030 | ELBOW, AIR CLEANER | 1 | INCLUDES ITEMS W/# |
| 12 | 90325044000 | WINGNUT, TOOL BOX SETTING | 2 | |
| 13 | 957010602000 | BOLT, FLANGE 6X20 | 1 | |
| 14 | 9405006000 | NUT, FLANGE 6MM | 2 | |

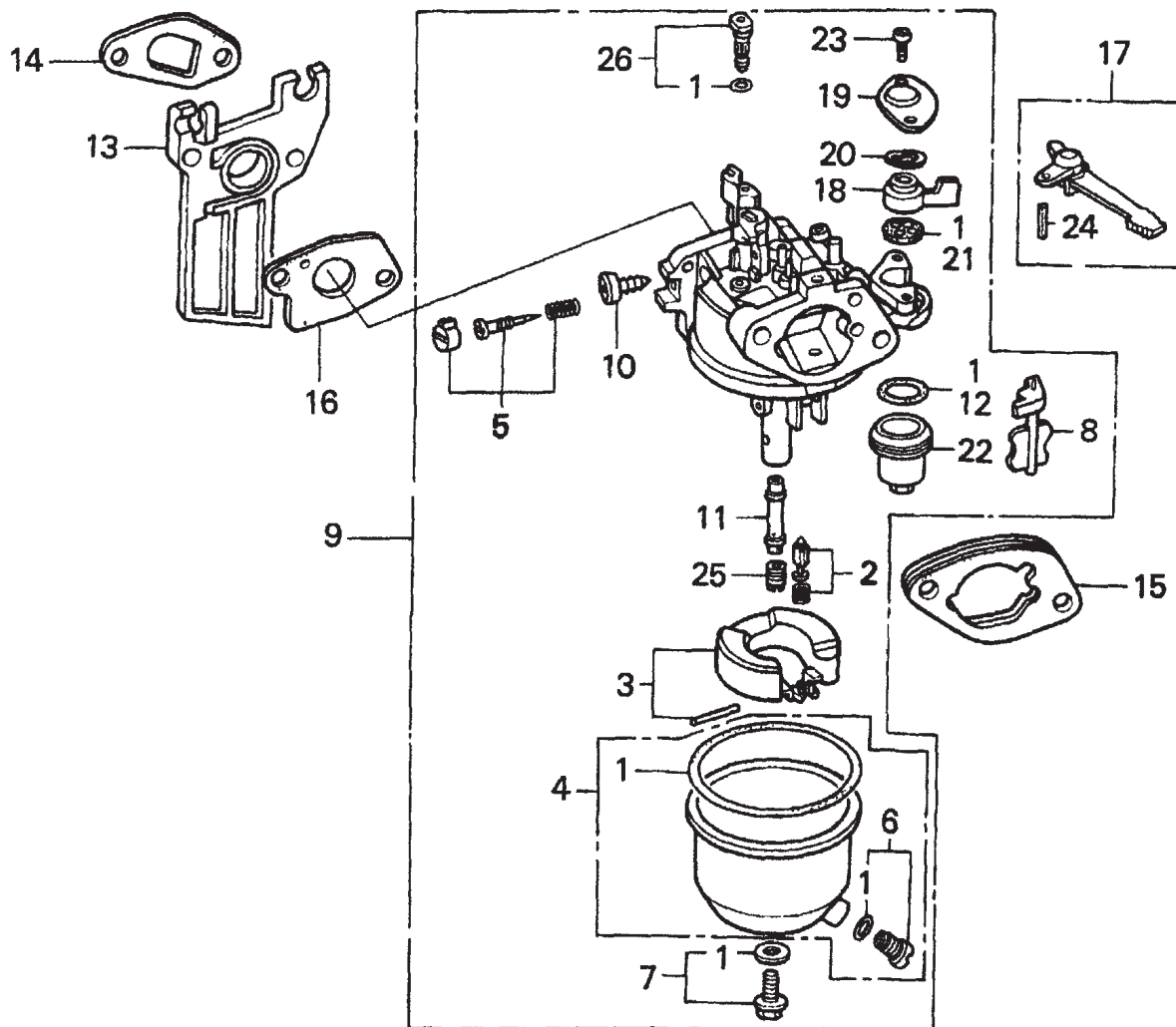
HONDA GX120K1QX2 — CAMSHAFT ASSY.

CAMSHAFT ASSY.

| <u>NO.</u> | <u>PART NO.</u> | <u>PART NAME</u> | <u>QTY.</u> | <u>REMARKS</u> |
|------------|-----------------|----------------------------|-------------|--------------------|
| 1 | 14100ZE0812 | CAMSHAFT ASSEMBLY | 1 | INCLUDES ITEMS W/* |
| 2 | 14410ZE0010 | ROD, PUSH | 2 | |
| 3 | 14431ZE1000 | ARM, VALVE ROCKER | 2 | |
| 4 | 14441ZE1010 | LIFTER, VALVE | 2 | |
| 5 | 14451ZE1013 | PIVOT, ROCKER ARM | 2 | |
| 6* | 14568ZE1000 | SPRING, WEIGHT RETURN | 1 | |
| 7 | 14711ZF0010 | VALVE, IN. | 1 | |
| 8 | 14721ZF0000 | VALVE, EX. | 1 | |
| 9 | 14751ZF1000 | SPRING, VALVE | 2 | |
| 10 | 14771ZE1000 | RETAINER, IN. VALVE SPRING | 1 | |
| 11 | 14773ZE1000 | RETAINER, EX. VALVE SPRING | 1 | |
| 12 | 14781ZE1000 | ROTATOR, VALVE | 1 | |
| 13 | 14791ZE0010 | PLATE, PUSH ROD GUIDE | 1 | |
| 14 | 90012ZE0010 | BOLT, PIVOT 8MM | 2 | |
| 15 | 90206ZE1000 | NUT, PIVOT ADJ. | 2 | |

HONDA GX120K1QX2 — CARBURETOR ASSY.

CARBURETOR ASSY.



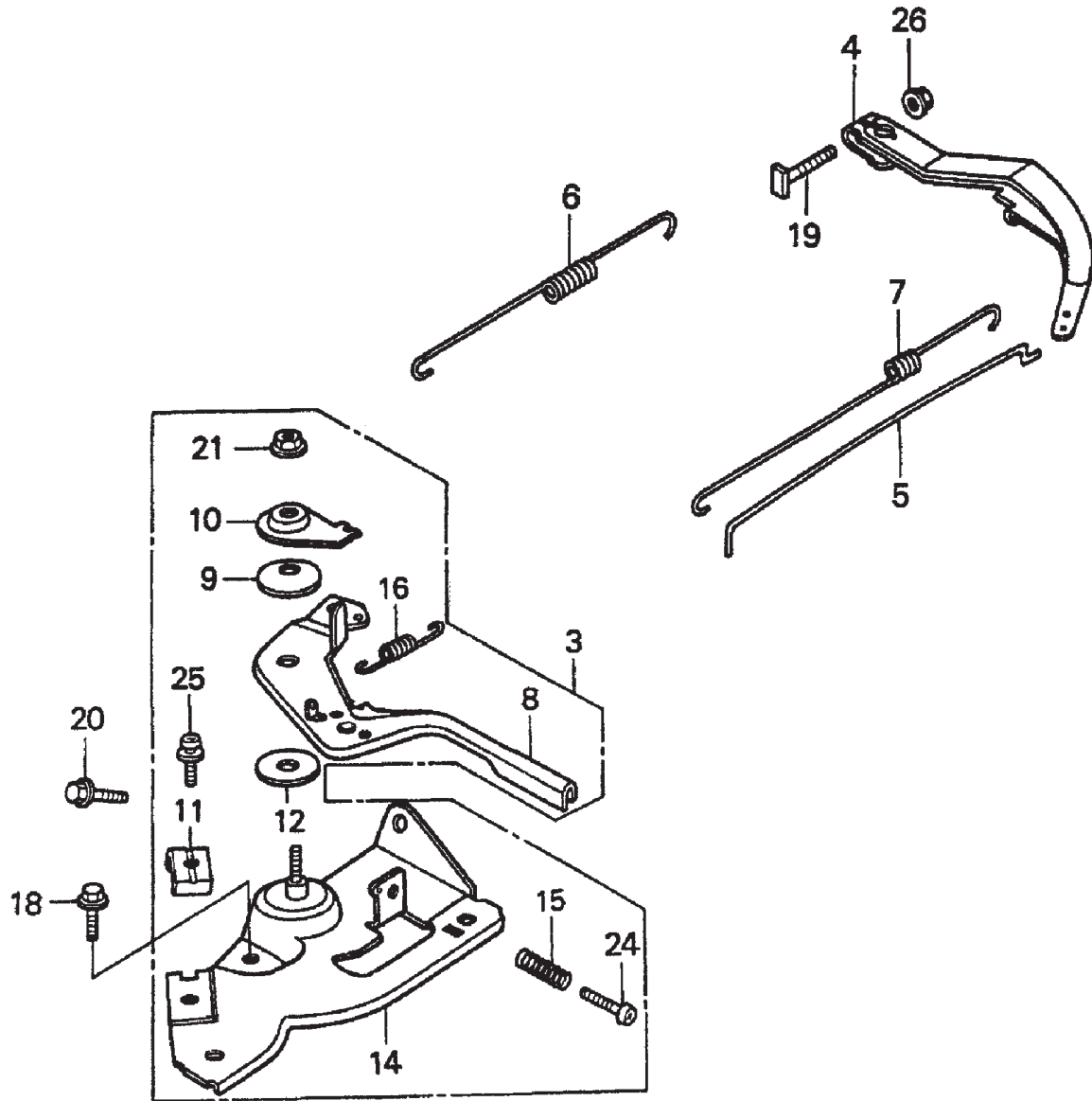
HONDA GX120K1QX2 — CARBURETOR ASSY.

CARBURETOR ASSY.

| <u>NO.</u> | <u>PART NO.</u> | <u>PART NAME</u> | <u>QTY.</u> | <u>REMARKS</u> |
|------------|-----------------|------------------------------------|-------------|--------------------|
| 1* | 16010ZE1812 | GASKET SET | 1 | |
| 2* | 16011ZE0005 | VALVE SET, FLOAT | 1 | |
| 3* | 16013ZE0005 | FLOAT SET | 1 | |
| 4* | 16015ZE1811 | CHAMBER SET, FLOAT | 1 | |
| 5* | 16016ZH7W01 | SCREW SET | 1 | |
| 6* | 16024ZE1811 | SCREW SET, DRAIN | 1 | |
| 7* | 16028ZE0005 | SCREW SET B | 1 | |
| 8* | 16044ZE0005 | CHOKE SET | 1 | |
| 9 | 16100ZH7W51 | CARBURETOR ASSEMBLY, BE60B B | 1 | INCLUDES ITEMS W/* |
| 10* | 16124ZE0005 | SCREW, THROTTLE STOP | 1 | |
| 11* | 16166ZH7W50 | NOZZLE, MAIN | 1 | |
| 12* | 160756HBB00 | GASKET, FUEL STRAINER CUP | 1 | |
| 13 | 16211ZE0000 | INSULATOR, CARBURETOR | 1 | |
| 14 | 16212ZH7800 | GASKET, INSULATOR | 1 | |
| 15 | 16220ZE1020 | SPACER, CARBURETOR | 1 | |
| 16 | 16221ZH8801 | GASKET, CARBURETOR | 1 | |
| 17 | 16610ZE1000 | LEVER, CHOKE (STANDARD) | 1 | INCLUDES ITEMS W/# |
| 18* | 16953ZE1812 | LEVER, VALVE | 1 | |
| 19* | 16954ZE1811 | PLATE, LEVER SETTING | 1 | |
| 20* | 16956ZE1811 | SPRING, VALVE LEVER | 1 | |
| 21* | 16957ZE1812 | GASKET, VALVE | 1 | |
| 22* | 16967ZE0811 | CUP, FUEL STRAINER | 1 | |
| 23* | 93500030080G | SCREW, PAN (3 X 6) | 2 | |
| 24# | 9430520122 | PIN, SPRING (2 X 12) | 1 | |
| 25 | 99101ZH80550 | JET, MAIN (#55) (OPTIONAL) | 1 | |
| 25 | 99101ZH80580 | JET, MAIN (#58) (OPTIONAL) | 1 | |
| 25* | 99101ZH80600 | JET, MAIN (#60) | 1 | |
| 26* | 99204ZE00350 | JET, SET, PILOT (#35) | 1 | |

HONDA GX120K1QX2 — CONTROL ASSY.

CONTROL ASSY.



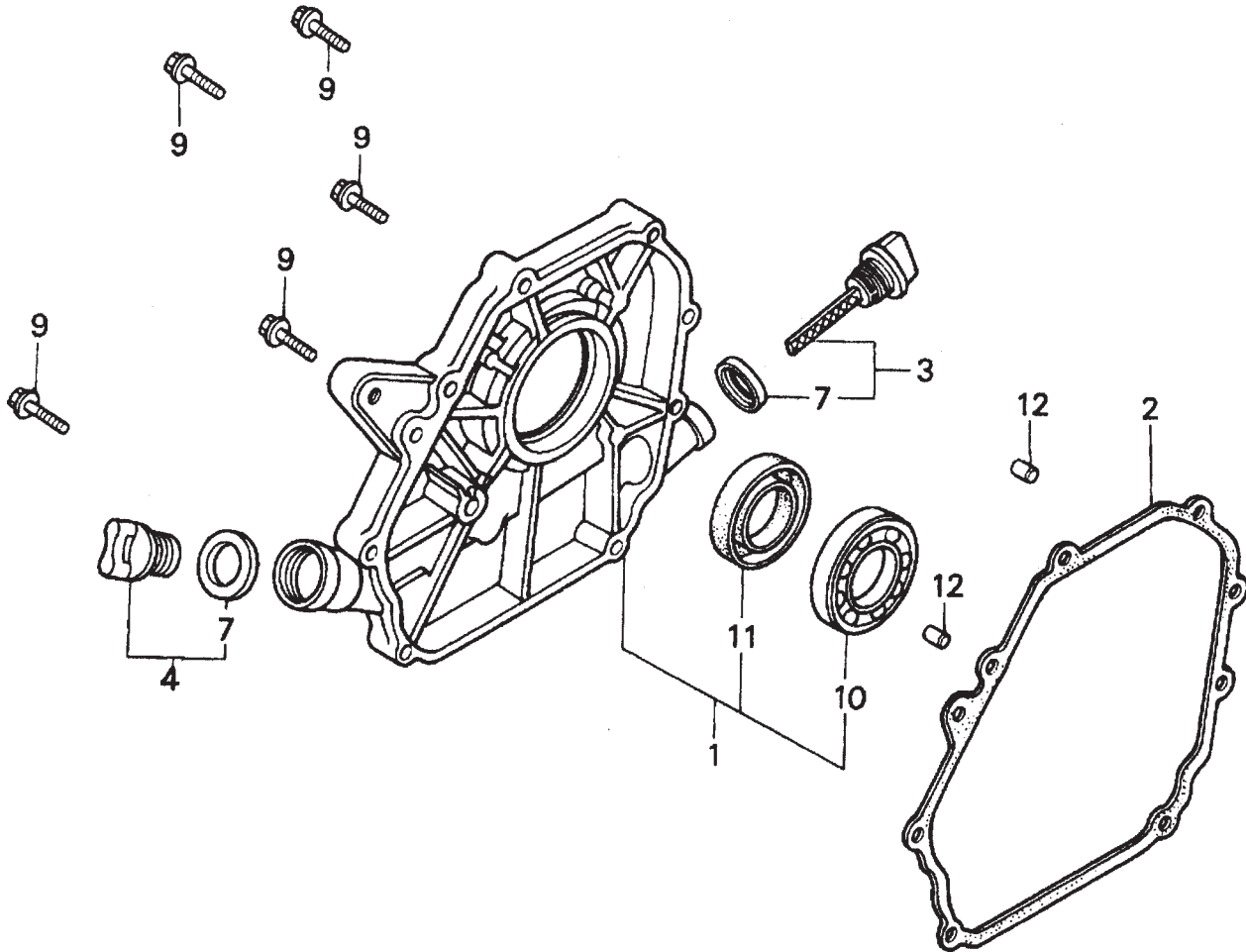
HONDA GX120K1QX2 — CONTROL ASSY.

CONTROL ASSY.

| <u>NO.</u> | <u>PART NO.</u> | <u>PART NAME</u> | <u>QTY.</u> | <u>REMARKS</u> |
|------------|-----------------|---------------------------------|-------------|--------------------|
| 3 | 16500ZH7820 | CONTROL ASSEMBLY (REMOTE) | 1 | INCLUDES ITEMS W/# |
| 4 | 16551ZE0010 | ARM, GOVERNOR | 1 | |
| 5 | 16555ZE0000 | ROD, GOVERNOR | 1 | |
| 6 | 16561ZE0020 | SPRING, GOVERNOR | 1 | |
| 7 | 16562ZE0020 | SPRING, THROTTLE RETURN | 1 | |
| 8# | 16571ZH7000 | LEVER, CONTROL | 1 | |
| 9# | 16574ZE1000 | SPRING, LEVER | 1 | |
| 10# | 16575ZH8000 | WASHER, CONTROL LEVER | 1 | |
| 11# | 16576891000 | HOLDER, CABLE | | |
| 12# | 16578ZE1000 | SPACER, CONTROL LEVER | 1 | |
| 14# | 16580ZH7810 | BASE CONTROL | 1 | |
| 15# | 16584883300 | SPRING, CONTROL ADJUSTING | 1 | |
| 16# | 16592ZE1810 | SPRING, CABLE RETURN | | |
| 18 | 90013883000 | BOLT, FLANGE 6X12 (CT200) | 1 | |
| 19 | 90015ZE5010 | BOLT, GOVERNOR ARM | 1 | |
| 20 | 90022888010 | BOLT, FLANGE 6X20 (CT200) | 1 | |
| 21# | 90114SA0000 | NUT, SELF- LOCK 6MM | 1 | |
| 24# | 93500050250H | SCREW, PAN 5X25 | 1 | |
| 25# | 0202005T125 | SCREW, PAN | 1 | |
| 26 | 9405006000 | NUT, FLANGE 6MM | 1 | |

HONDA GX120K1QX2 — CRANKCASE COVER ASSY.

CRANKCASE COVER ASSY.



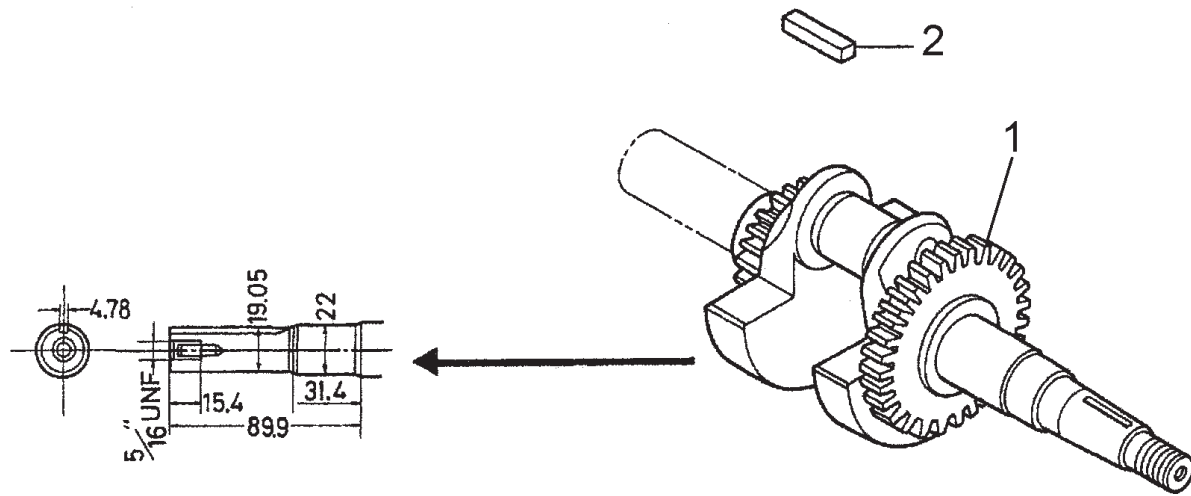
HONDA GX120K1QX2 — CRANKCASE COVER ASSY.

CRANKCASE COVER ASSY.

| <u>NO.</u> | <u>PART NO.</u> | <u>PART NAME</u> | <u>QTY.</u> | <u>REMARKS</u> |
|------------|-----------------|---|-------------|--------------------|
| 1 | 11300ZE0640 | COVER ASSEMBLY, CRANKCASE (W- TYPE) | 1 | INCLUDES ITEMS W/* |
| 2 | 11381ZH7800 | GASKET, CASE COVER | 1 | |
| 3 | 15600ZE1003 | CAP ASSEMBLY, OIL FILLER | 1 | INCLUDES ITEMS W/# |
| 4 | 15600ZG4003 | CAP ASSEMBLY, OIL FILLER | 1 | INCLUDES ITEMS W/# |
| 7# | 15625ZE1003 | GASKET, OIL FILLER CAP | 1 | |
| 9 | 90015883000 | BOLT, FLANGE 6X28 | 7 | |
| 10* | 91001878003 | BEARING, RADIAL BALL | 1 | |
| 11* | 91203ZE0013 | OIL SEAL 22X41X6 | 1 | |
| 12 | 9430108140 | PIN A, DOWEL 8X14 | 2 | |

HONDA GX120K1QX2 — CRANKSHAFT ASSY.

CRANKSHAFT ASSY.



HONDA GX120K1QX2 — CRANKSHAFT ASSY.

CRANKSHAFT ASSY.

| <u>NO.</u> | <u>PART NO.</u> | <u>PART NAME</u> | <u>QTY.</u> | <u>REMARKS</u> |
|------------|-----------------|--------------------|-------------|----------------|
| 1 | 13310ZE0601 | CRANKSHAFT, H-TYPE | 1 | |
| 2 | 90745ZE1600 | KEY 4.78 X4.78X38 | 1 | |

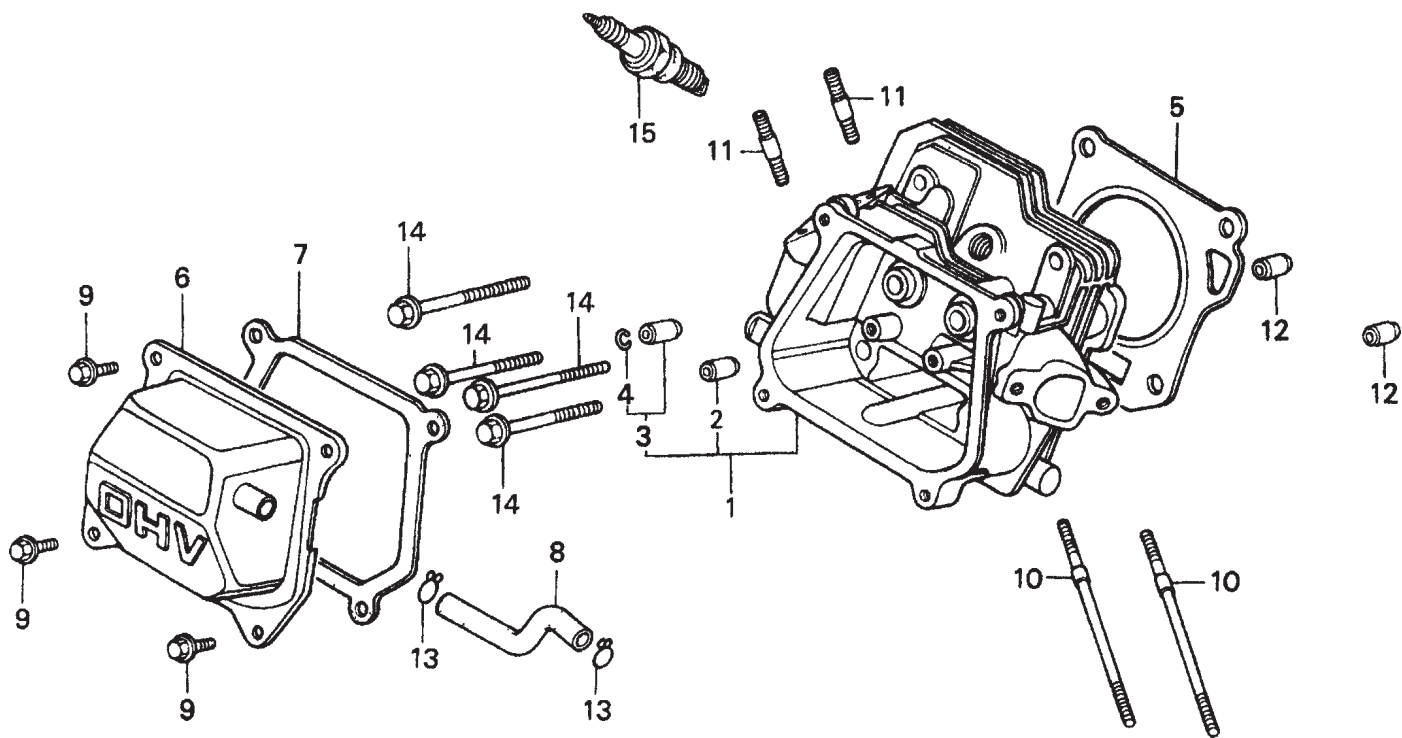
HONDA GX120K1QX2 — CYLINDER BARREL ASSY.

CYLINDER BARREL ASSY.

| <u>NO.</u> | <u>PART NO.</u> | <u>PART NAME</u> | <u>QTY.</u> | <u>REMARKS</u> |
|------------|-----------------|-------------------------------------|-------------|--------------------|
| 2 | 120A0ZH7810 | CYLINDER ASSEMBLY (OIL ALERT) | 1 | INCLUDES ITEMS W/* |
| 3 | 15510ZE1033 | SWITCH ASSEMBLY, OIL LEVEL | 1 | |
| 4 | 16510ZE1000 | GOVERNOR ASSEMBLY | 1 | INCLUDES ITEMS W/# |
| 5# | 16511ZE1000 | WEIGHT, GOVERNOR | 2 | |
| 6# | 16512ZE1000 | HOLDER, GOVERNOR WEIGHT | 1 | |
| 7# | 16513ZE1000 | PIN, GOVERNOR WEIGHT | 2 | |
| 8 | 16531ZE1000 | SLIDER, GOVERNOR | 1 | |
| 9 | 16541ZE1000 | SHAFT, GOVERNOR ARM | 1 | |
| 10 | 90131ZE1000 | BOLT, DRAIN PLUG | 2 | |
| 11 | 90451ZE1000 | WASHER, THRUST 6mm | 1 | |
| 12 | 90601ZE1000 | WASHER, DRAIN PLUG 10.2mm | 2 | |
| 13 | 90602ZE1000 | CLIP, GOVERNOR HOLDER | 1 | |
| 14* | 91001878003 | BEARING, RADIAL BALL 62/22 | 1 | |
| 15* | 91202ZE6003 | OIL SEAL 22X35X6 | 1 | |
| 16 | 91353671003 | O- RING 13.5X1.5 (ARAI) | 1 | |
| 17 | 9405010000 | NUT, FLANGE 10mm | 1 | |
| 18 | 58176 | WASHER, PLAIN 6mm | 2 | |
| 19 | 9425108000 | PIN, LOCK 8mm | 1 | |
| 20 | 957010601200 | BOLT, FLANGE 6X12 | 2 | |

HONDA GX120K1QX2 — CYLINDER HEAD ASSY.

CYLINDER HEAD ASSY.



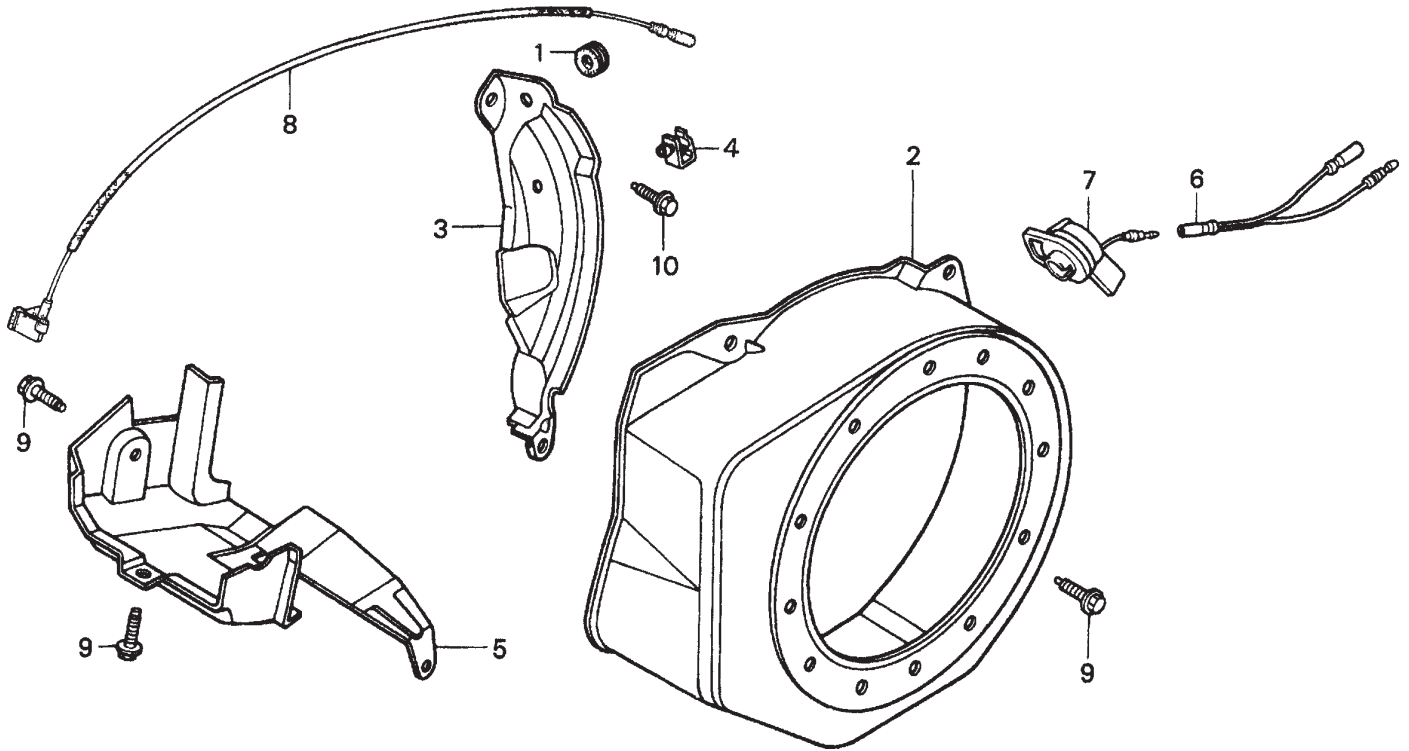
HONDA GX120K1QX2 — CYLINDER HEAD ASSY.

CYLINDER HEAD ASSY.

| <u>NO.</u> | <u>PART NO.</u> | <u>PART NAME</u> | <u>QTY.</u> | <u>REMARKS</u> |
|------------|-----------------|--------------------------------------|-------------|--------------------|
| 1 | 12210ZH7000 | CYLINDER HEAD | 1 | INCLUDES ITEMS W/* |
| 2* | 12204ZE1306 | GUIDE, VALVE (OS) OPTIONAL | 1 | |
| 3* | 12205ZE1315 | GUIDE, EX. VALVE (OS) OPTIONAL | 1 | INCLUDES ITEMS W/+ |
| 4*+ | 12216ZE5300 | CLIP, VALVE GUIDE | 1 | |
| 5 | 12251ZH7800 | GASKET, CYLINDER HEAD | 1 | |
| 6 | 12310ZE1020 | COVER, HEAD | 1 | |
| 7 | 12391ZE1000 | GASKET, CYLINDER HEAD COVER | 1 | |
| 8 | 15721ZH8000 | TUBE, BREATHER | 1 | |
| 9 | 90013883000 | BOLT, FLANGE 6X12 (CT200) | 4 | |
| 10 | 90043ZE1020 | BOLT, STUD 6X109 | 2 | |
| 11 | 90047ZE1000 | BOLT, STUD 8X32 | 2 | |
| 12 | 9430110160 | PIN, A, DOWEL 10X16 | 2 | |
| 14 | 957230805500 | BOLT, FLANGE 8X55 | 4 | |
| 15 | 9807955846 | SPARK PLUG BPR6ES (NGK) | 1 | |

HONDA GX120K1QX2 — FAN COVER ASSY.

FAN COVER ASSY.



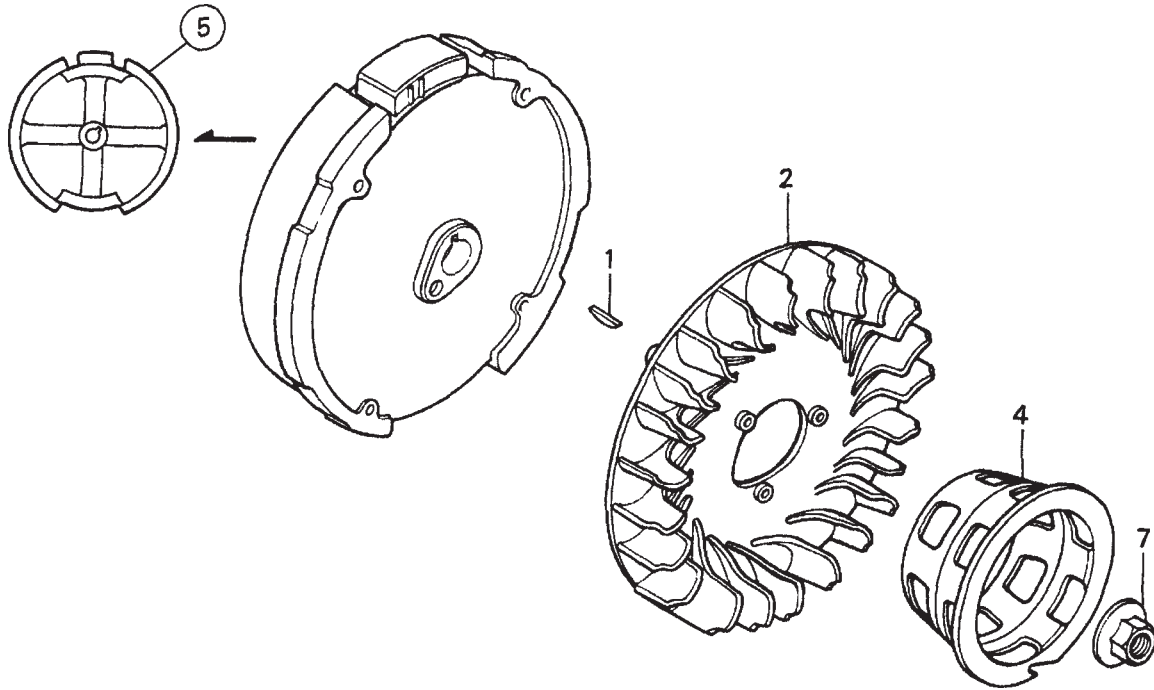
HONDA GX120K1QX2 — FAN COVER ASSY.

FAN COVER ASSY.

| <u>NO.</u> | <u>PART NO.</u> | <u>PART NAME</u> | <u>QTY.</u> | <u>REMARKS</u> |
|------------|-----------------|------------------------------|-------------|----------------|
| 1 | 11347371300 | GROMMET, ADJUSTING COVER | 1 | |
| 2 | 19610ZE0000ZE | COVER, FAN *NH1* BLACK | 1 | |
| 3 | 19611ZH7810 | PLATE, SIDE (OIL ALERT) | 1 | |
| 4 | 90601ZH7013 | CLIP, HARNESS | 1 | |
| 5 | 19630ZH7000 | SHROUD | 1 | |
| 6 | 32197ZH8003 | SUB- HARNESS | 1 | |
| 7 | 36100ZE1015 | SWITCH ASSEMBLY, ENGINE STOP | 1 | |
| 7 | 36100ZH7003 | SWITCH ASSEMBLY, ENGINE STOP | 1 | |
| 8 | 36101ZE1010 | WIRE, STOP SWITCH 370MM | 1 | |
| 9 | 90013883000 | BOLT, FLANGE 6X12 (CT200) | 6 | |
| 10 | 90022888010 | BOLT, FLANGE 6X12 (CT200) | 1 | |
| 11 | 34150ZH7003 | ALERT UNIT, OIL | 1 | |
| 13 | 957010600800 | BOLT, FLANGE 6X8 | 1 | |

HONDA GX120K1QX2 — FLYWHEEL ASSY.

FLYWHEEL ASSY.



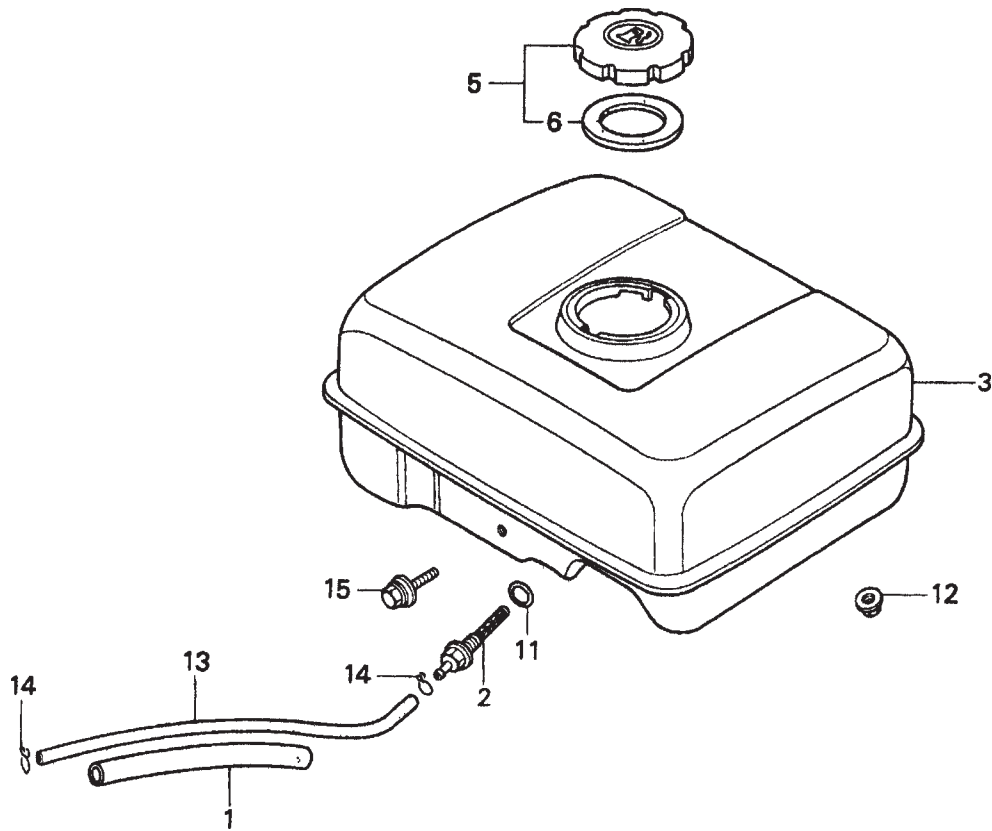
HONDA GX120K1QX2 — FLYWHEEL ASSY.

FLYWHEEL ASSY.

| <u>NO.</u> | <u>PART NO.</u> | <u>PART NAME</u> | <u>QTY.</u> | <u>REMARKS</u> |
|------------|-----------------|-----------------------------|-------------|----------------|
| 1 | 13331357000 | KEY, SPECIAL WOODRUFF 25X18 | 1 | |
| 2 | 19511ZE0000 | FAN, COOLING | 1 | |
| 4 | 28451ZH8003 | PULLEY, STARTER | 1 | |
| 5 | 31100ZE0010 | FLYWHEEL | 1 | |
| 7 | 90201878003 | NUT, SPECIAL 14MM | 1 | |

HONDA GX120K1QX2 — FUEL TANK ASSY.

FUEL TANK ASSY.



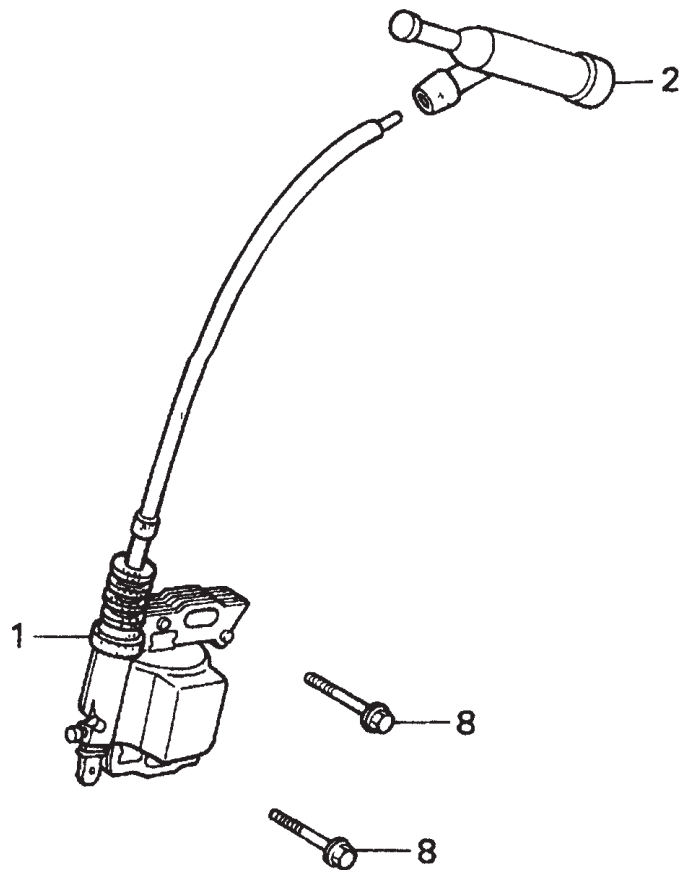
HONDA GX120K1QX2 — FUEL TANK ASSY.

FUEL TANK ASSY.

| <u>NO.</u> | <u>PART NO.</u> | <u>PART NAME</u> | <u>QTY.</u> | <u>REMARKS</u> |
|------------|-----------------|--------------------------------------|-------------|--------------------|
| 1 | 16854ZH8000 | RUBBER, SUPPORTER 107MM | 1 | |
| 2 | 16955ZE1000 | JOINT, FUEL TANK | 1 | |
| 3 | 17510ZE0020ZD | TANK, FUEL *NH1* (BLACK) | 1 | |
| 5 | 17620ZH7023 | CAP, FUEL FILLER | 1 | INCLUDES ITEMS W/* |
| 6* | 17631ZH7003 | GASKET, FUEL FILLER CAP | 1 | |
| 11 | 91353671003 | O- RING 13.5X1.5 (ARAI) | 1 | |
| 12 | 9405006000 | NUT, FLANGE 6MM | 2 | |
| 13 | 950014500360M | BULK HOSE, FUEL (4.5X3000) (4.5X140) | 1 | |
| 14 | 9500202080 | CLIP, TUBE (B8) | 2 | |
| 15 | 90004ZH7003 | BOLT, FLANGE 6X29 | 1 | |

HONDA GX120K1QX2 — IGNITION COIL ASSY.

IGNITION COIL ASSY.



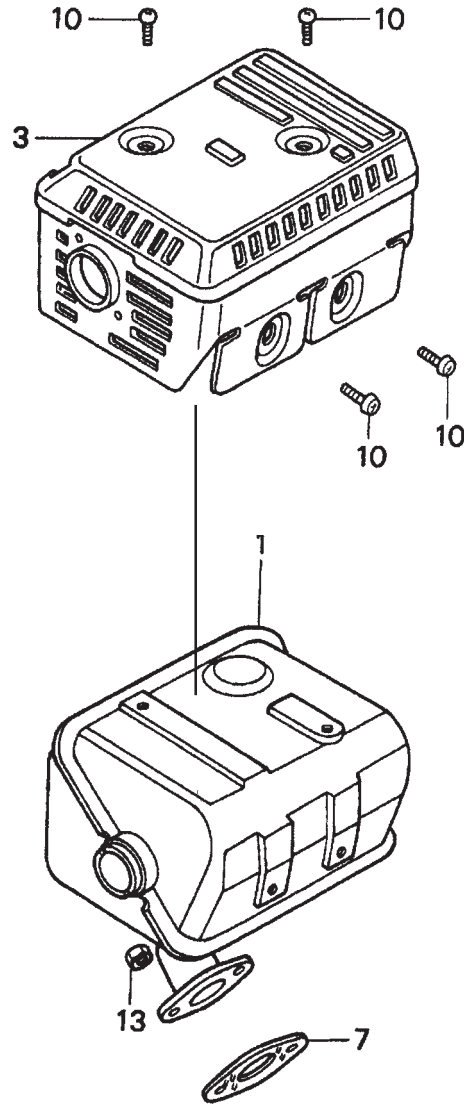
HONDA GX120K1QX2 — IGNITION COIL ASSY.

IGNITION COIL ASSY.

| <u>NO.</u> | <u>PART NO.</u> | <u>PART NAME</u> | <u>QTY.</u> | <u>REMARKS</u> |
|------------|-----------------|--------------------------------|-------------|----------------|
| 1 | 30500ZE1043 | COIL ASSEMBLY, IGNITION | 1 | |
| 2 | 30700ZE1013 | CAP ASSEMBLY, NOISE SUPPRESSOR | 1 | |
| 8 | 957010602500 | BOLT, FLANGE 6X25 | 2 | |

HONDA GX120K1QX2 — MUFFLER ASSY.

MUFFLER ASSY.



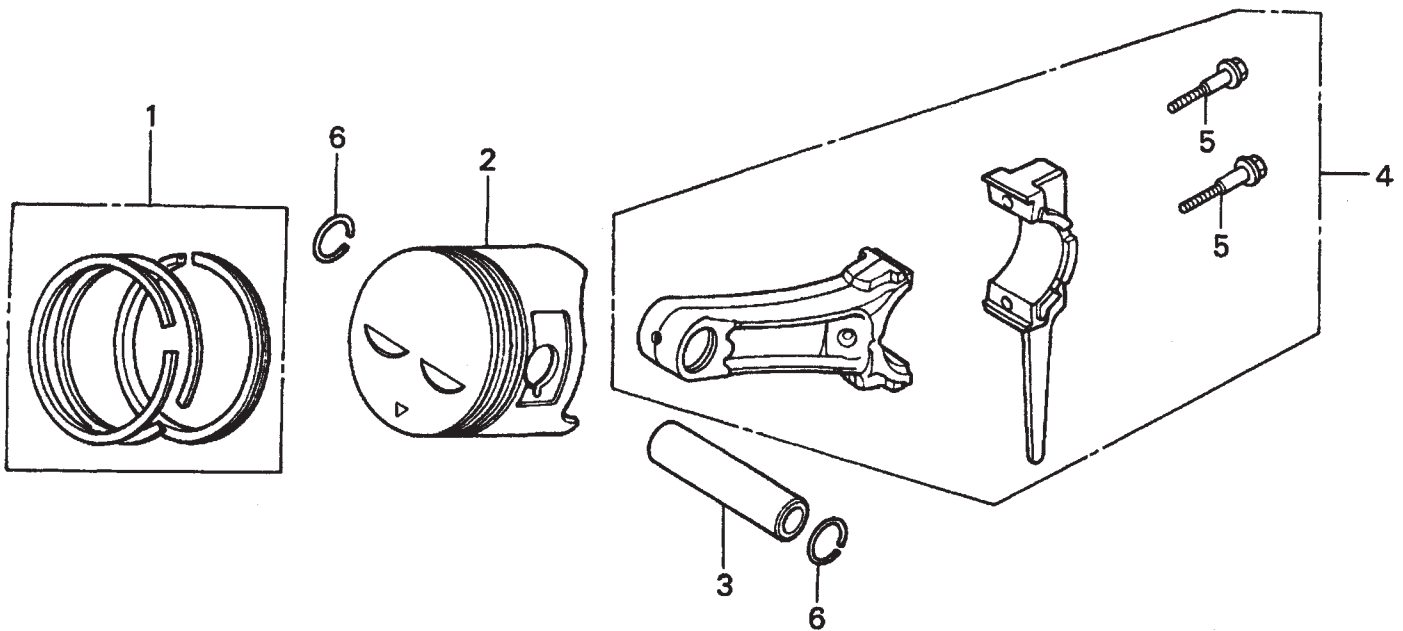
HONDA GX120K1QX2 — MUFFLER ASSY.

MUFFLER ASSY.

| <u>NO.</u> | <u>PART NO.</u> | <u>PART NAME</u> | <u>QTY.</u> | <u>REMARKS</u> |
|------------|-----------------|--------------------|-------------|----------------|
| 1 | 18310ZF1000 | MUFFLER | 1 | |
| 3 | 18320ZF1H01 | PROTECTOR, MUFFLER | 1 | |
| 7 | 18381ZH8800 | GASKET, MUFFLER | 1 | |
| 10 | 90050ZE1000 | SCREW, TAPPING 5X8 | 4 | |
| 13 | 020108060 | NUT, HEX. 8MM | 2 | |

HONDA GX120K1QX2 — PISTON ASSY.

PISTON ASSY.



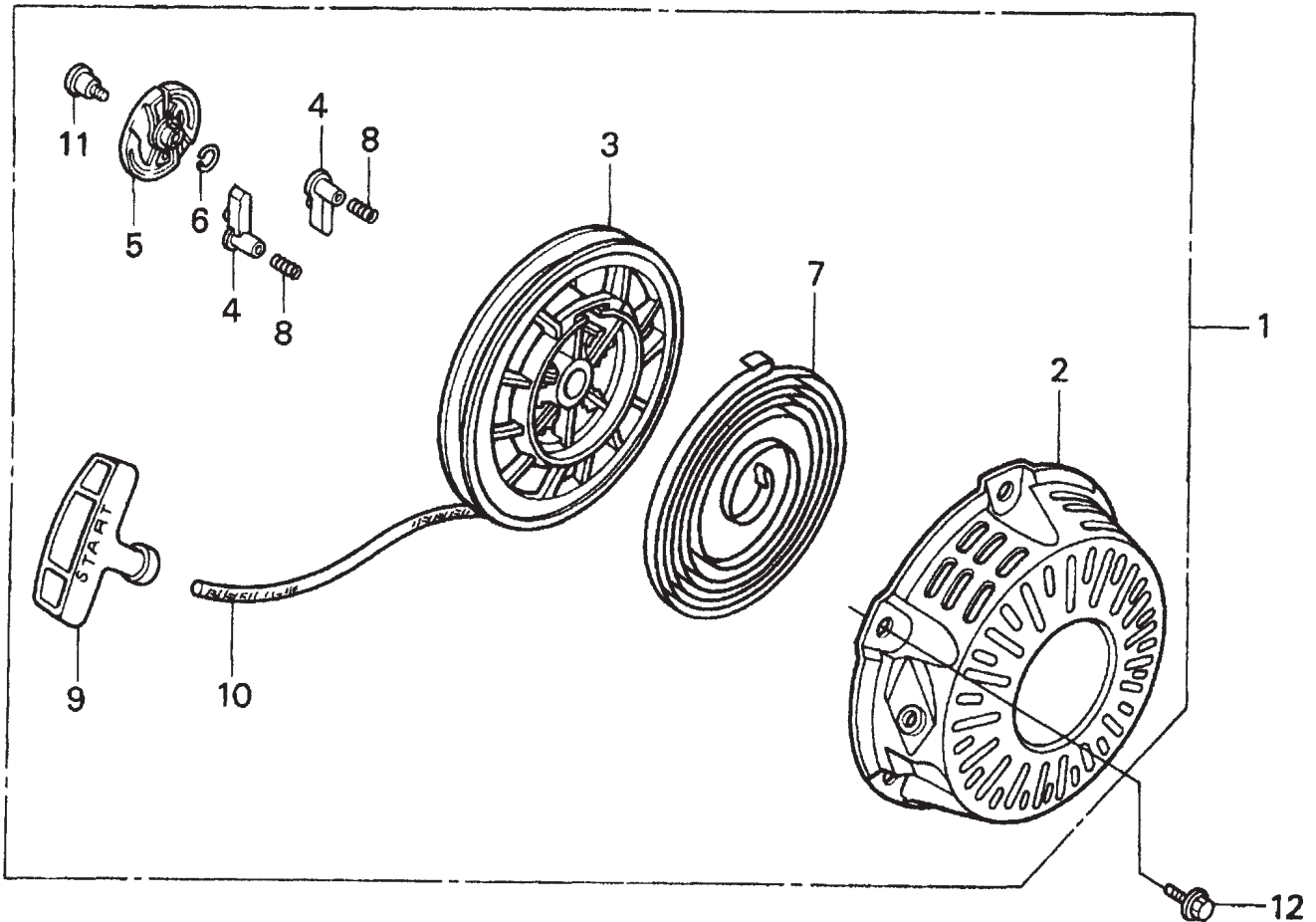
HONDA GX120K1QX2 — PISTON ASSY.

PISTON ASSY.

| <u>NO.</u> | <u>PART NO.</u> | <u>PART NAME</u> | <u>QTY.</u> | <u>REMARKS</u> |
|------------|-----------------|--|-------------|--------------------|
| 1 | 13010ZK7V02 | RING SET, PISTON (STANDARD) | 1 | |
| 1 | 13011ZE6013 | RING SET, PISTON (OS 0.25), OPTIONAL | 1 | |
| 1 | 13012ZK7V01 | RING SET, PISTON (OS 0.50) , OPTIONAL | 1 | |
| 1 | 13013ZK7V01 | RING SET, PISTON (OS 0.75), OPTIONAL | 1 | |
| 2 | 13101ZH7000 | PISTON, STANDARD | 1 | |
| 2 | 13102ZH7000 | PISTON, OS 0.25 | 1 | |
| 2 | 13103ZH7000 | PISTON, OS 0.50 | 1 | |
| 2 | 13104ZH7000 | PISTON, 0.75 | 1 | |
| 3 | 13111ZE0000 | PIN, PISTON | 1 | |
| 4 | 132A0ZE0000 | ROD ASSY, CONNECTING (UNDER SIZE) | 1 | INCLUDES ITEMS W/* |
| 4 | 13200ZE0000 | ROD ASSEMBLY, CONNECTING | 1 | INCLUDES ITEMS W/* |
| 5* | 90001ZE1000 | BOLT, CONNECTING ROD | 2 | |
| 6 | 90551ZE0000 | CLIP, PISTON PIN 13MM | 2 | |

HONDA GX120K1QX2 — RECOIL STARTER ASSY.

RECOIL STARTER ASSY.



HONDA GX120K1QX2 — RECOIL STARTER ASSY.

RECOIL STARTER ASSY.

| <u>NO.</u> | <u>PART NO.</u> | <u>PART NAME</u> | <u>QTY.</u> | <u>REMARKS</u> |
|------------|-----------------|-------------------------------------|-------------|--------------------|
| 1 | 28400ZH8013ZB | STARTER ASSY., RECOIL *NH1* (BLACK) | 1 | INCLUDES ITEMS W/* |
| 2* | 28410ZH8003ZB | CASE, RECOIL STARTER *NH1* (BLACK) | 1 | |
| 3* | 28420ZH8013 | REEL, RECOIL STARTER | 1 | |
| 4* | 28422ZH8013 | RATCHET, STARTER | 2 | |
| 5* | 28433ZH8003 | GUIDE, RATCHET | 1 | |
| 6* | 28441ZH8003 | SPRING, FRICTION | 1 | |
| 7* | 28442ZH8003 | SPRING, RECOIL STARTER | 1 | |
| 8* | 28443ZH8003 | SPRING, RETURN | 2 | |
| 9* | 28461ZH8003 | KNOB, RECOIL STARTER | 1 | |
| 10* | 28462ZH8003 | ROPE, RECOIL STARTER | 1 | |
| 11* | 90003ZH8003 | SCREW, SETTING | 1 | |
| 12 | 9008ZE2003 | BOLT, FLANGE 6X10 | 3 | |

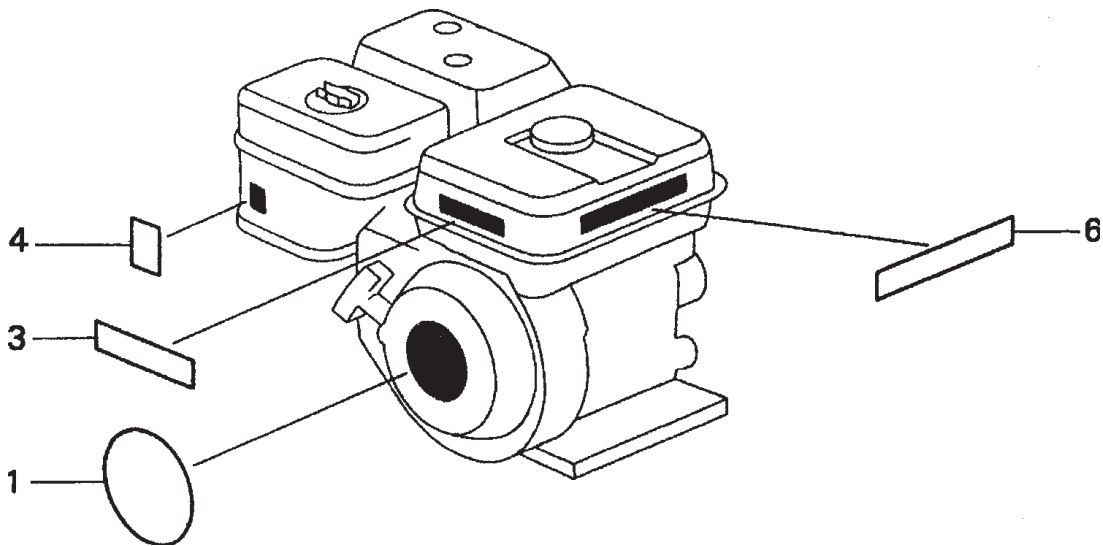
HONDA GX120K1QX2 ENGINE — GASKET KIT ASSY.

GASKET KIT ASSY.

| <u>NO.</u> | <u>PART NO.</u> | <u>PART NAME</u> | <u>QTY.</u> | <u>REMARKS</u> |
|------------|-----------------|-----------------------------|-------------|--------------------|
| 2 | 06111ZH7405 | GASKET KIT | 1 | INCLUDES ITEMS W/* |
| 3* | 11381ZH7800 | GASKET, CASE COVER | 1 | |
| 4* | 12251ZH7800 | GASKET, CYLINDER HEAD | 1 | |
| 5* | 12391ZE1000 | GASKET, CYLINDER HEAD COVER | 1 | |
| 6* | 16212ZH7800 | GASKET, INSULATOR | 1 | |
| 7* | 16221ZH8801 | GASKET, CARBURETOR | 1 | |
| 8* | 18381ZH8800 | GASKET, MUFFLER | 1 | |

HONDA GX120K1QX2 — ENGINE LABELS ASSY.

ENGINE LABELS ASSY.



HONDA GX120K1QX2 — ENGINE LABELS ASSY.

LABELS ASSY.

| <u>NO.</u> | <u>PART NO.</u> | <u>PART NAME</u> | <u>QTY.</u> | <u>REMARKS</u> |
|------------|-----------------|-----------------------------|-------------|----------------|
| 1 | 87521ZH7020 | RING SET, PISTON (STANDARD) | 1 | |
| 3 | 87522zH9000 | LABEL CAUTION | 1 | |
| 4 | 87528ZE1810 | MARK CHOKE | 1 | |
| 6 | 87532ZH8810 | MARK, OIL ALERT | 1 | |