

OPERATION AND PARTS MANUAL

STOW[®]

A DIVISION OF MULTIQUIP INC.

MODELS

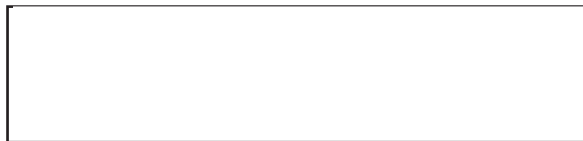
C10SH8 (STEEL)

C10PH8 (PLASTIC)

CONCRETE MIXER

(HONDA GX240U1QA2 GASOLINE ENGINE)

Revision #0 (03/06/09)



THIS MANUAL MUST ACCOMPANY THE EQUIPMENT AT ALL TIMES.

TABLE OF CONTENTS

C10SH8-PH8 Concrete Mixer

Proposition 65 Warning	2
Silicosis/Respiratory Warnings	3
Table Of Contents	4
Parts Ordering Procedures.....	5
Safety Information	6-10
Specifications	12
Dimensions.....	13
General Information.....	14
Components	15
Basic Engine.....	16
Towing Guidelines.....	17
Safety Chain Connection.....	18
Inspection	19
Operation.....	20-21
Maintenance (Engine)	22-23
Maintenance (Mixer).....	24-26
Troubleshooting (Engine).....	28
Troubleshooting (Mixer)	29
Explanation Of Code In Remarks Column	30
Suggested Spare Parts	31

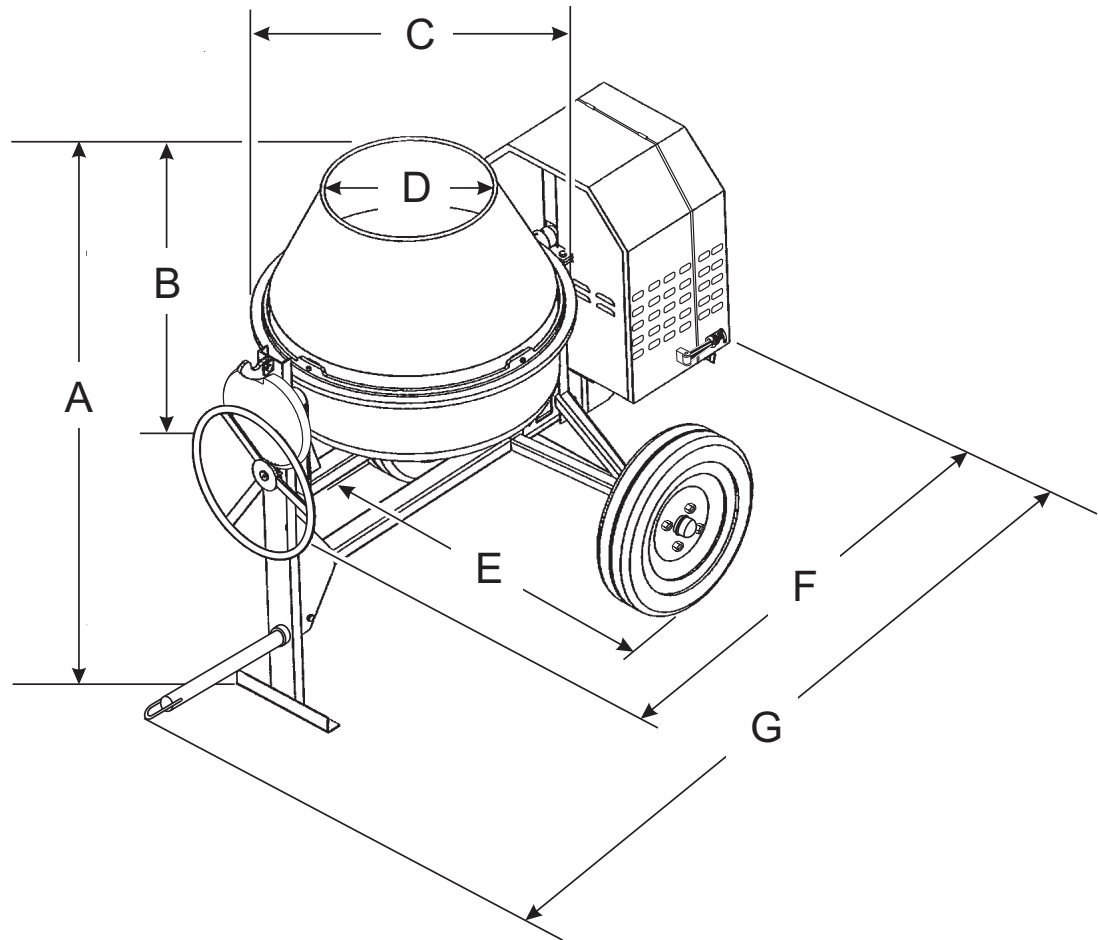
Component Drawings

Nameplates And Decals	32-33
Plastic Drum Assembly.....	34-35
Steel Drum Assembly	36-37
Yoke Assembly.....	38-39
Frame Assembly	40-41
Hub/Tire Assembly	42-43
Cabinet Assembly.....	44-45
Engine Assembly.....	46-47
Terms And Conditions Of Sale — Parts	48

NOTICE

Specifications and part numbers are subject to change without notice.

DIMENSIONS



OPTIONAL TOW BARS

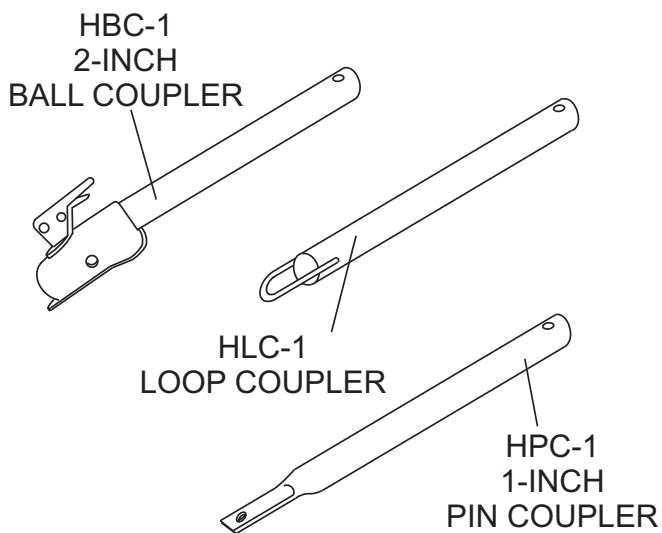


Table 3. Dimensions		
Reference Letter	Description	Dimension
A	Height	61 in. (1545 mm)
B	Drum height	30 in. (765 mm)
C	Drum width	38.6 in. (980 mm)
D	Drum neck diameter	21.1 in. (535 mm)
E	Width	45.7 in. (1160 mm)
F	Length, no tow bar	74.5 in. (1892 mm)
G	Length with tow bar	92.7 in. (2355 mm)

Figure 1. Dimensions

SUGGESTED SPARE PARTS

C10SH8-PH8 CONCRETE MIXER WITH HONDA GX240U1QA2 ENGINE

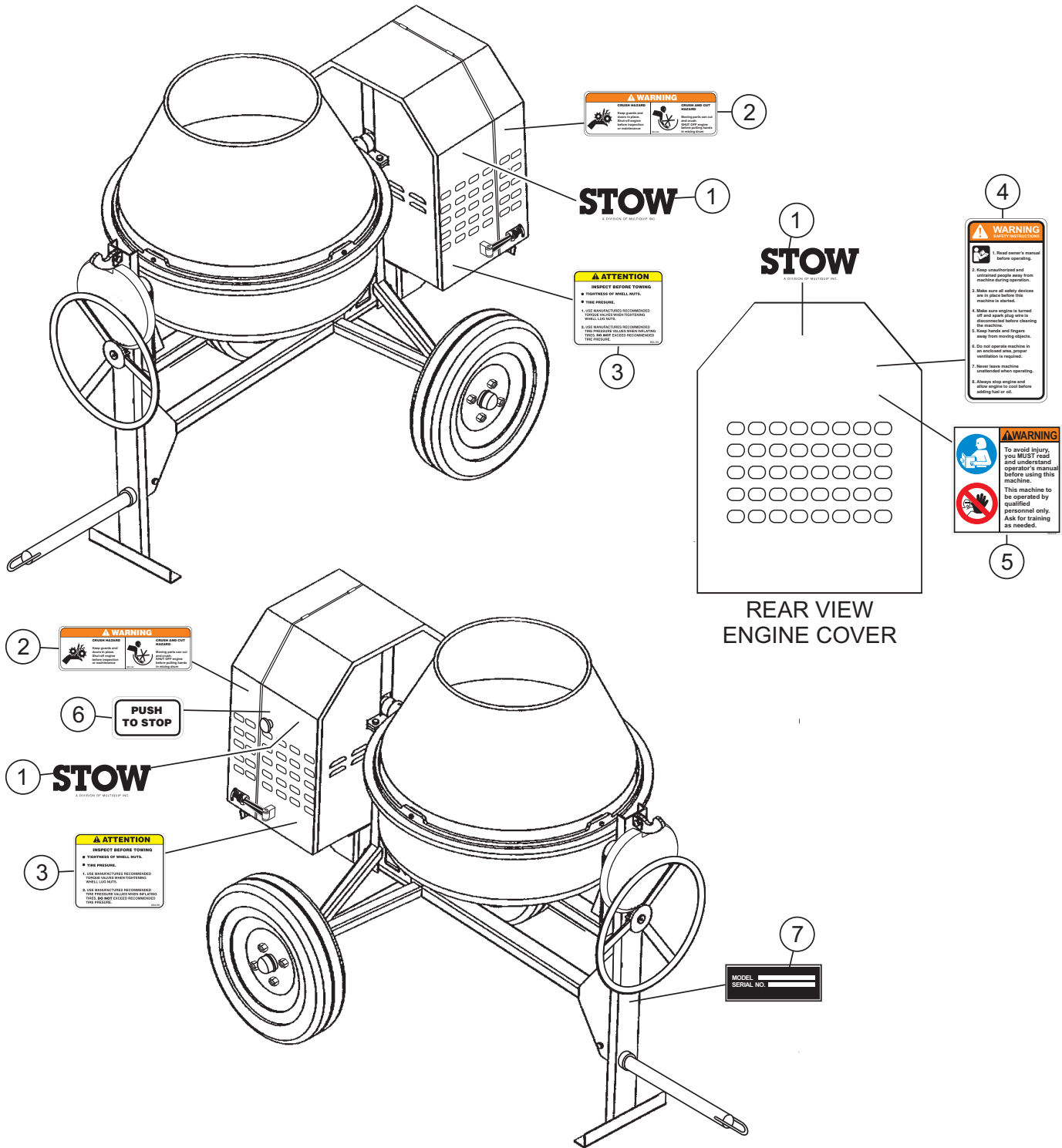
1 to 3 units

Qty.	P/N	Description
2	EM493399	V-BELT
2	29173-001	SWITCH, STOP
4	491010	RUBBER LATCH ASSY.
1	EM903026	BEARING CUP
1	EM903063	BEARING CONE
2	492178	BEARING, SHAFT
2	EM914288	OIL SEAL
1	516592	OIL SEAL
4	EM903113	BEARING CONE
4	EM903012	BEARING CUP
2	3469	DUST CAP
3	9807956846	SPARK PLUG
3	17210ZE2505	AIR FILTER 8.0 HP
1	17620ZH7023	CAP, FUEL
1	28462ZEW211	ROPE, 8.0 HP

NOTICE

Part numbers on this Suggested Spare Parts list may supersede/replace the part numbers shown in the following parts lists.

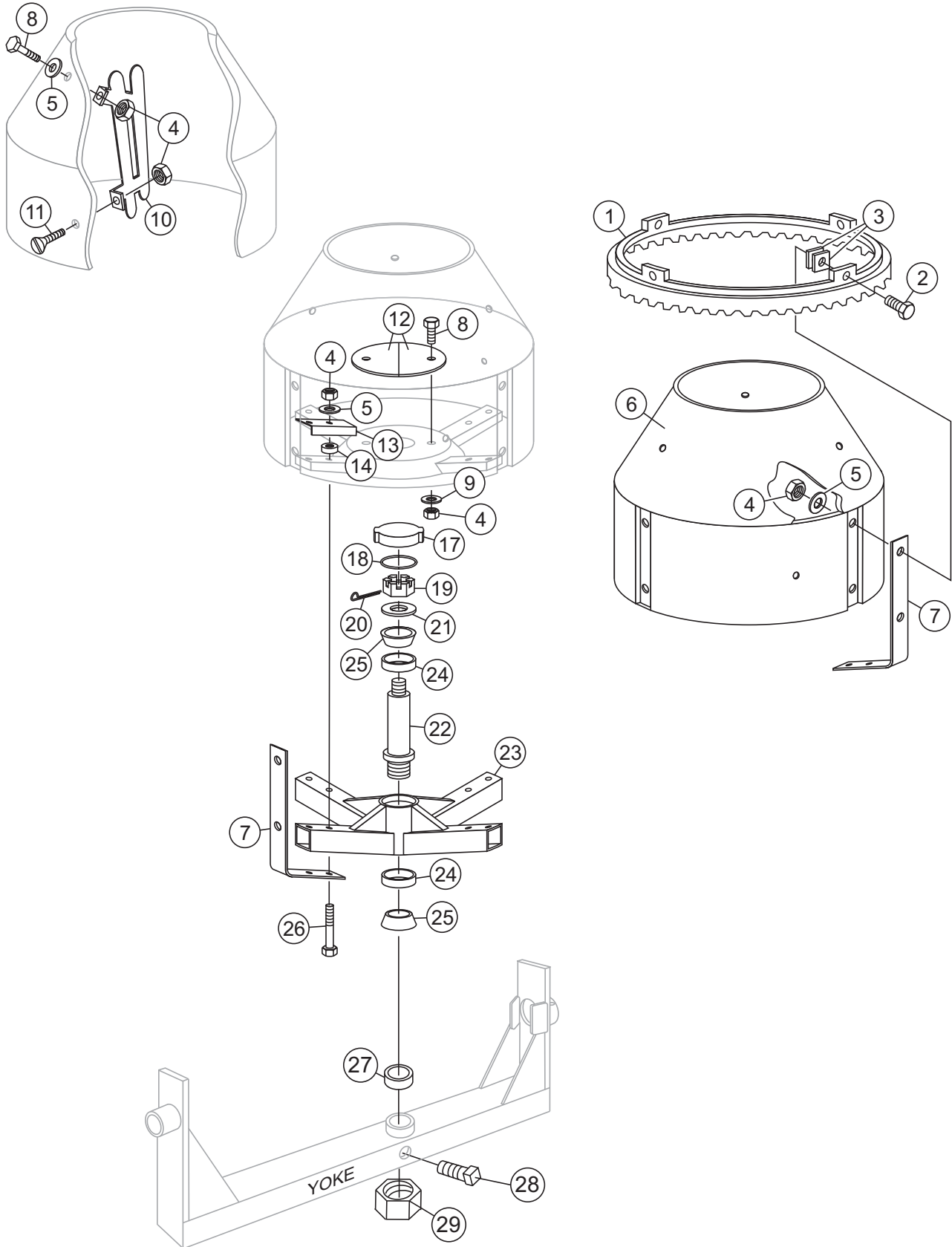
NAMEPLATES AND DECALS



NAMEPLATES AND DECALS

<u>NO.</u>	<u>PART NO.</u>	<u>PART NAME</u>	<u>QTY.</u>	<u>REMARKS</u>
1	510164	DECAL, STOW A DIVISION OF MULTIQUIP	3	
2	DCL160A	DECAL, CRUSH WARNING	2	
3	DCL151	DECAL, WARNING TOWING	2	
4	504713	DECAL, WARNING SAFETY INSTRUCTIONS	1	
5	35137	DECAL, READ MANUAL	1	
6	EM948630	DECAL, PUSH TO STOP	1	
7		NAMEPLATE	1.....	CONTACT MQ PARTS DEPT.

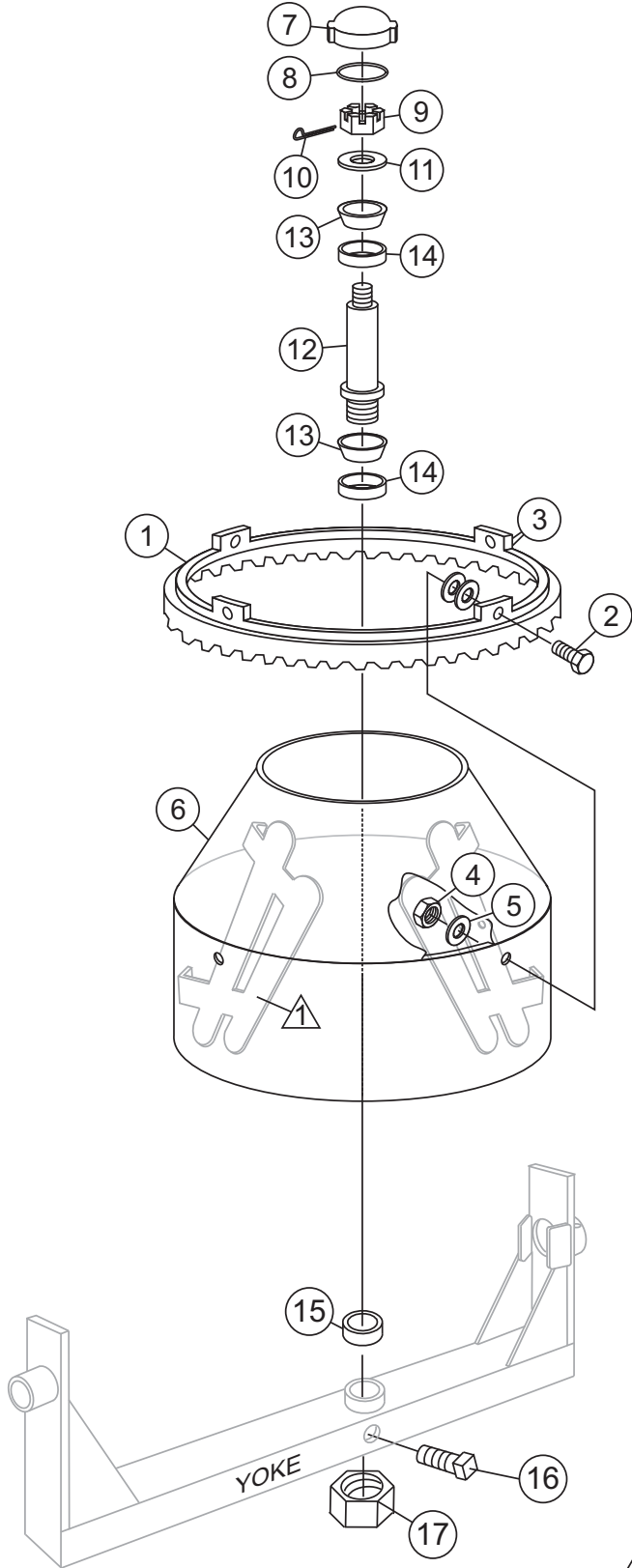
PLASTIC DRUM ASSY



PLASTIC DRUM ASSY

<u>NO.</u>	<u>PART NO.</u>	<u>PART NAME</u>	<u>QTY.</u>	<u>REMARKS</u>
1	516658	GEAR RING	1	
2	412379	SCREW, CAP 3/8"	4	
3	511729	SHIM	8	
4	EM969013	NUT, NYLOC	30	
5	510909	WASHER	19	
6	510916	DRUM, PLASTIC	1	
7	511089	SUPPORT BRACKET	4	
8	EM963057	SCREW, CAP 3/8" X 1-1/2"	5	
9	3019092	WASHER, 3/8" FLAT	2	
10	510884	BLADE, PLASTIC DRUM	3	
11	515453	SCREW	3	
12	515304	PLATE PROTECTION	2	
13	515305	PLATE PROTECTION	4	
14	507538C	BUSHING	8	
17	516424	CAP, PLASTIC DRUM	1	
18	516618	O-RING	1	
19	516678C	NUT, KING PIN	1	
20	EM924006	PIN, COTTER 1/8 X 3/4	1	
21	517134	WASHER	1	
22	516504	PIN, KING	1	
23	516706	SUPPORT SPIDER	1	
24	EM903026	BEARING CUP	2	
25	EM903063	BEARING CONE	2	
26	503116	BOLT 3/8" NC X 3-3/8"	1	
27	516592	OIL SEAL	1	
28	492491	SCREW, SET	1	
29	516614	NUT	1	

STEEL DRUM ASSY



NOTES

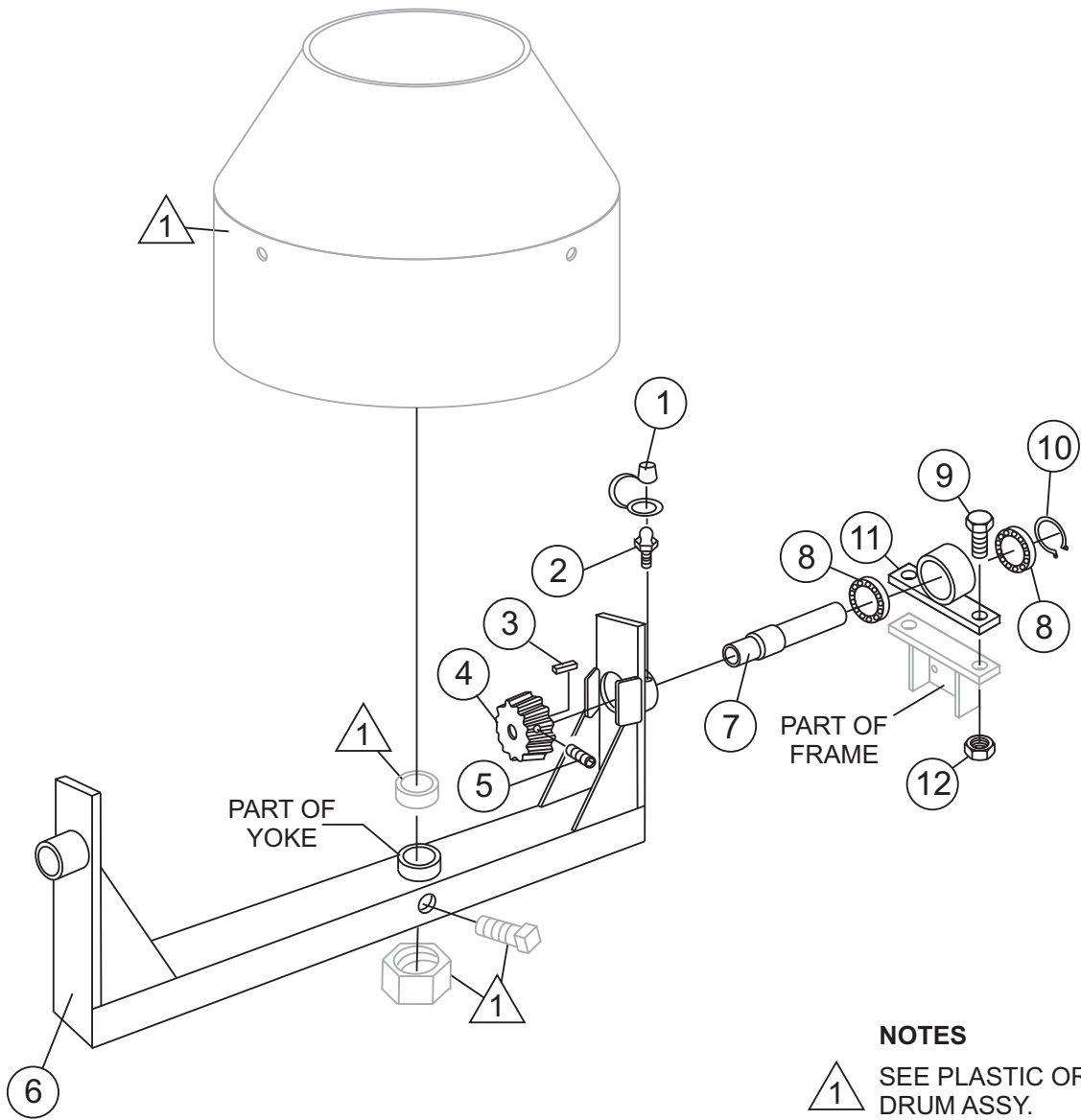


MIXING BLADES ARE PART OF DRUM ASSEMBLY. TO RE-ORDER NEW BLADES A COMPLETE MIXING DRUM MUST BE PURCHASED.

STEEL DRUM ASSY

<u>NO.</u>	<u>PART NO.</u>	<u>PART NAME</u>	<u>QTY.</u>	<u>REMARKS</u>
1	516658	GEAR RING	1	
2	EM963057	SCREW, CAP 3/8" X 1-1/2"	4	
3	511730	SHIM	8	
4	492542	NUT	4	
5	0166 A	WASHER, LOCK 3/8"	4	
6	516575	DRUM, STEEL	1	
7	516511	CAP, DRUM	1	
8	516618	O-RING	1	
9	516678	NUT, KING PIN	1	
10	EM924006	PIN, COTTER 1/8" X 3/4"	1	
11	504447	WASHER	1	
12	516495	PIN, KING	1	
13	EM903063	BEARING CONE	2	
14	EM903026	BEARING CUP	2	
15	516592	OIL SEAL	1	
16	492491	SCREW, SET	1	
17	516614	NUT	1	

YOKE ASSY.



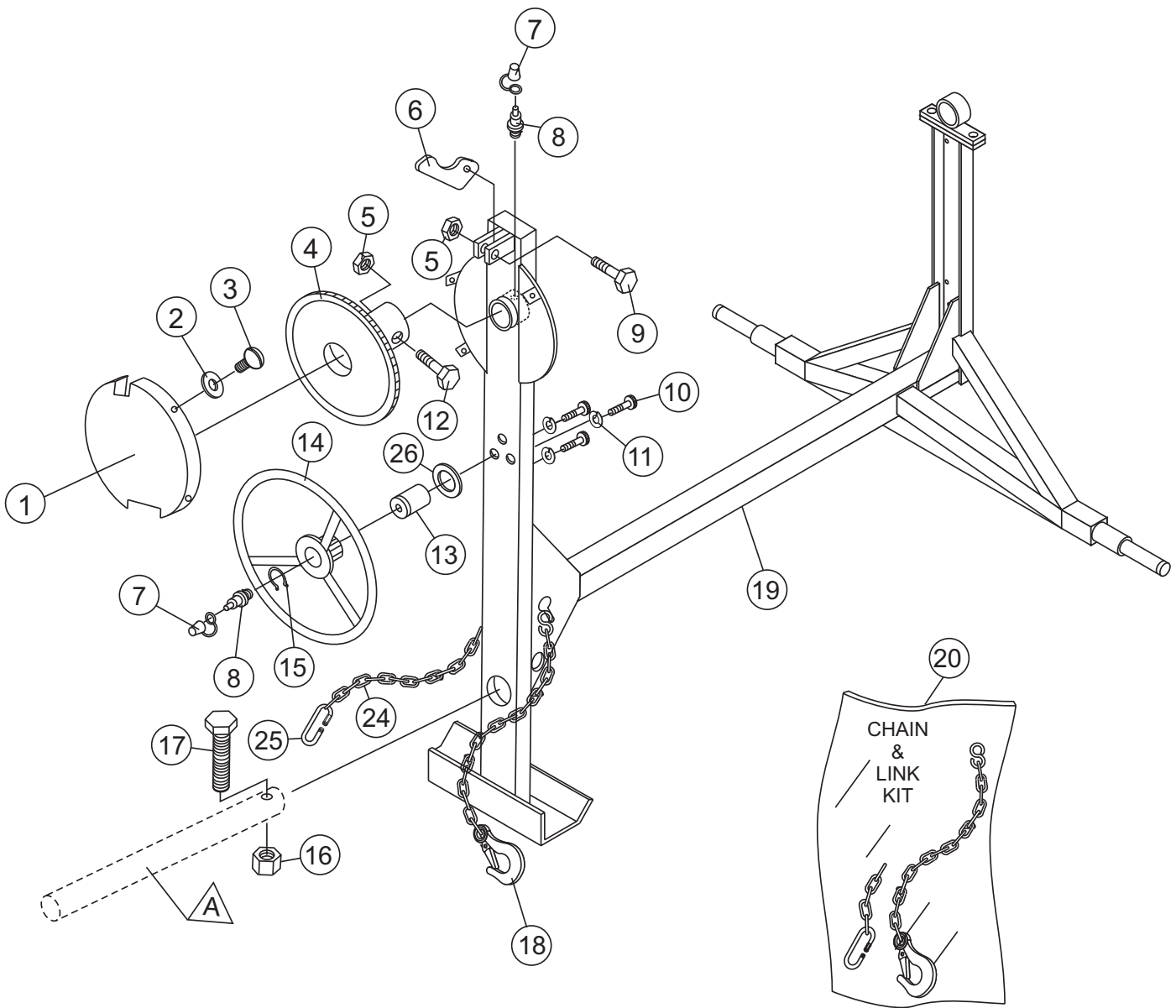
NOTES

1 SEE PLASTIC OR STEEL DRUM ASSY.

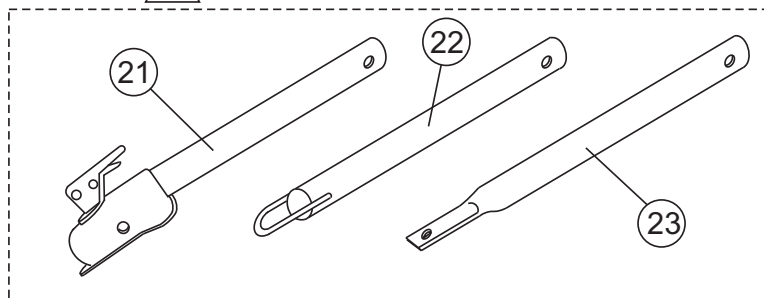
YOKE ASSY.

<u>NO.</u>	<u>PART NO.</u>	<u>PART NAME</u>	<u>QTY.</u>	<u>REMARKS</u>
1	491008	FITTING PROTECTOR	1	
2	EM916001	GREASE FITTING	1	
3	500214	KEY SQUARE 1/4" X 1/4" X 1-1/2"	1	
4	503915	PINION GEAR	1	
5	492468	SCREW, SET 5/16"	1	
6	516654	SUPPORT YOKE	1	
7	513991	PINION, JACKSHAFT	1	
8	492178	BEARING, SHAFT	2	
9	EM963692	SCREW, CAP HHCS, 1/2-13 X 1	2	
10	490970	SNAP RING	1	
11	514036	HOUSING, JACKSHAFT	1	
12	492584	NUT, LOCK 1/2"	2	

FRAME ASSY.



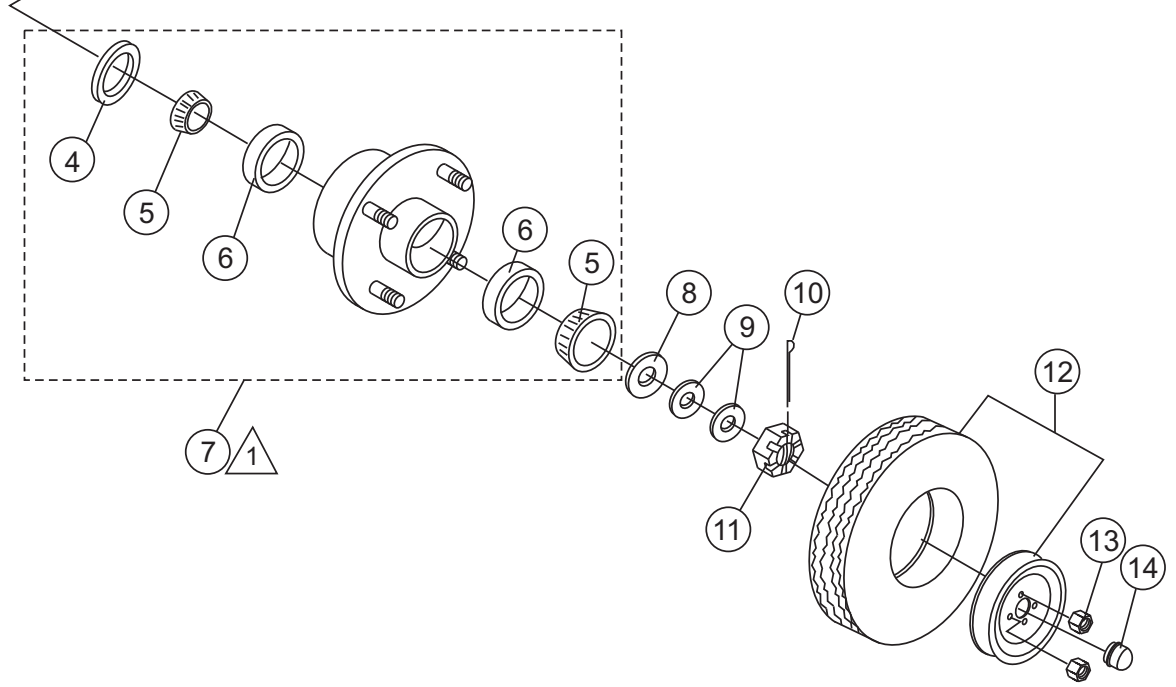
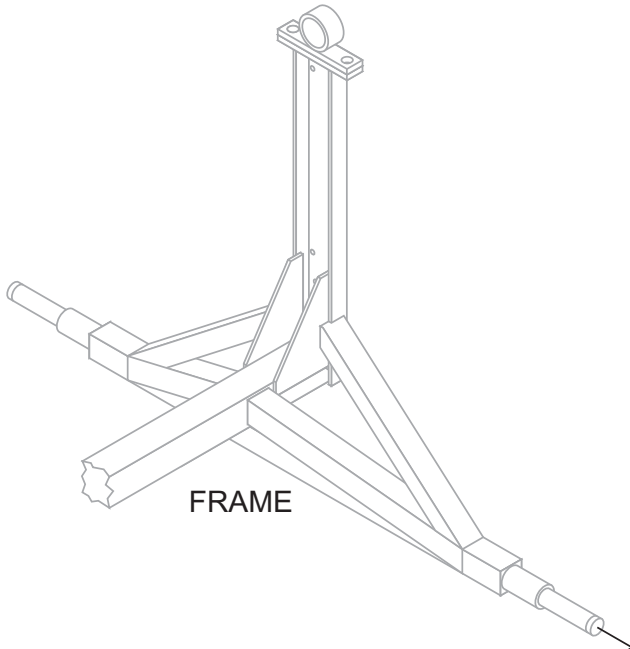
A OPTIONAL TOW BARS



FRAME ASSY.

<u>NO.</u>	<u>PART NO.</u>	<u>PART NAME</u>	<u>QTY.</u>	<u>REMARKS</u>
1	514245	GUARD, GEAR WHEEL	1	
2	3103160	WASHER	4	
3	492278	BOLT HEAD ROUND 1/4 X 3/8	4	
4	516668	GEAR, DUMP	1	
5	492584	NUT, LOCK 1/2"	3	
6	490895	DUMP LATCH	1	
7	491008	FITTING PROTECTOR	2	
8	EM916001	GREASE FITTING	2	
9	492329	BOLT, 1/2" NC X 1-3/4" G2	1	
10	492259	BOLT, 5/16" NC X 3/4"	3	
11	EM923343	WASHER, LOCK 5/16"	3	
12	EM963102	BOLT, HHCS 1/2" NC X 1-1/4"	2	
13	516534	HANDWHEEL SHAFT	1	
14	501808	HANDWHEEL	1	
15	490961	RETAINING RING	1	
16	10176	NUT, NYLOC 1/2-13	1	
17	EM124	BOLT, HHCS 1/2 X 4 G5	1	
18%	516581	CLEVIS SAFETY HOOK	1	
19	516560	FRAME	1	
20	13363KIT	CHAIN AND LINK KIT.....	1.....	INCLUDES ITEMS W/%
21	HBC-1	BALL HITCH	1	
22	HLC-1	LOOP HITCH	1	
23	HPC-1	PIN HITCH	1	
24%		SAFETY CHAIN	2	
25%	01004	CONNECTOR LINK	1	
26	504447	WASHER	1	

HUB/TIRE ASSY.



NOTES:

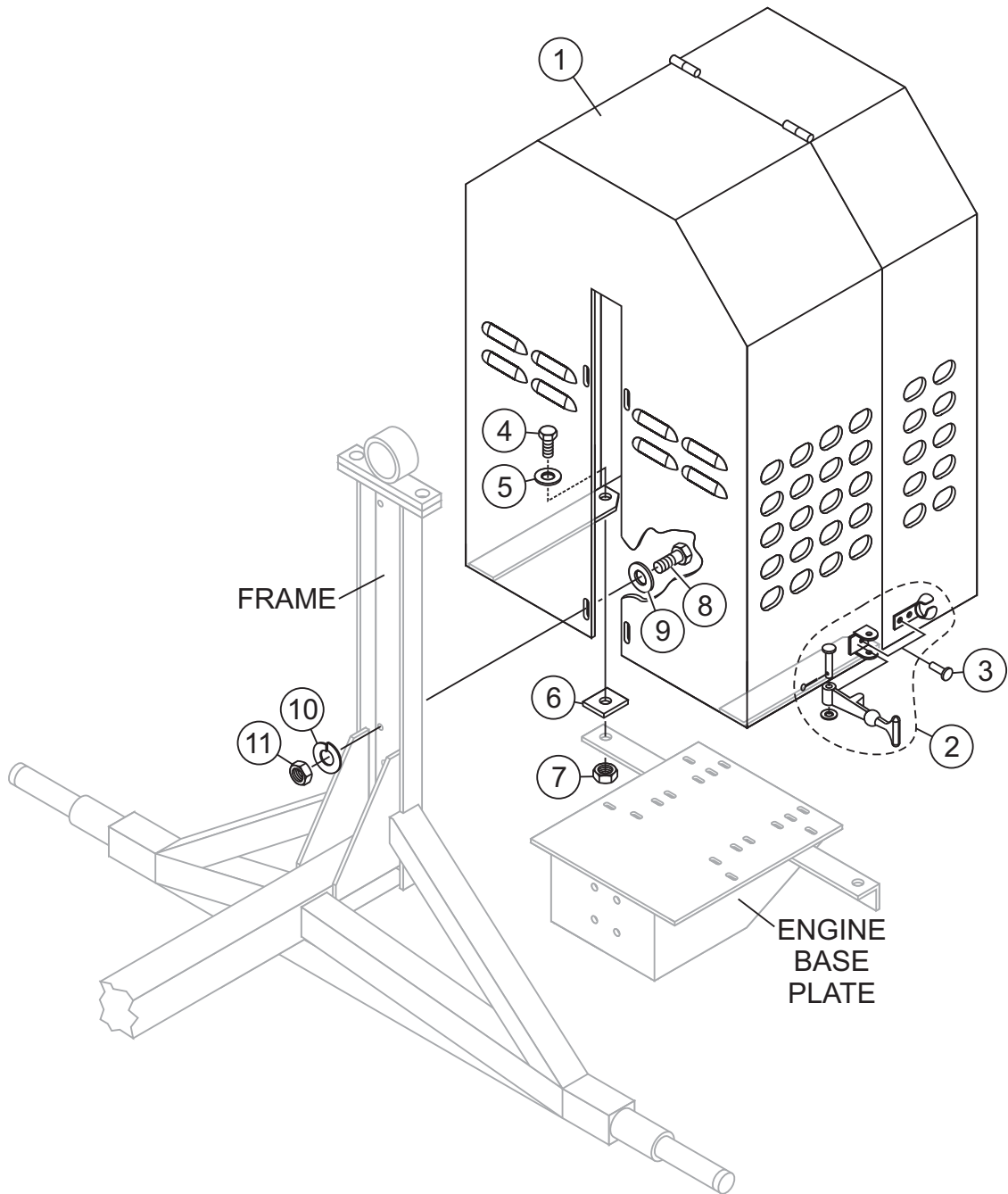


COMPLETE HUB ASSEMBLY INCLUDES ITEMS WITHIN DASHED LINES AND ITEMS 13 AND 14.

HUB/TIRE ASSY.

<u>NO.</u>	<u>PART NO.</u>	<u>PART NAME</u>	<u>QTY.</u>	<u>REMARKS</u>
4%	EM914288	OIL SEAL	2	
5%	EM903113	BEARING CONE	4	
6%	EM903012	BEARING CUP	4	
7	EM941306	HUB ASSY, 4-BOLT	2	INCLUDES ITEMS W/%
8%	EM511159	WASHER, FLAT, .087" THICKNESS	2	
9%	EM501299	WASHER, FLAT, .135" THICKNESS	A/R	
10	491688	COTTER PIN, 1/8" X 1-1/2"	2	
11	8164	NUT, SLOTTED HEX JAM 1"-20	2	
12	516476	TIRE AND RIM	2	
13	8115	LUG NUT	8	
14	3469	DUST CAP	2	

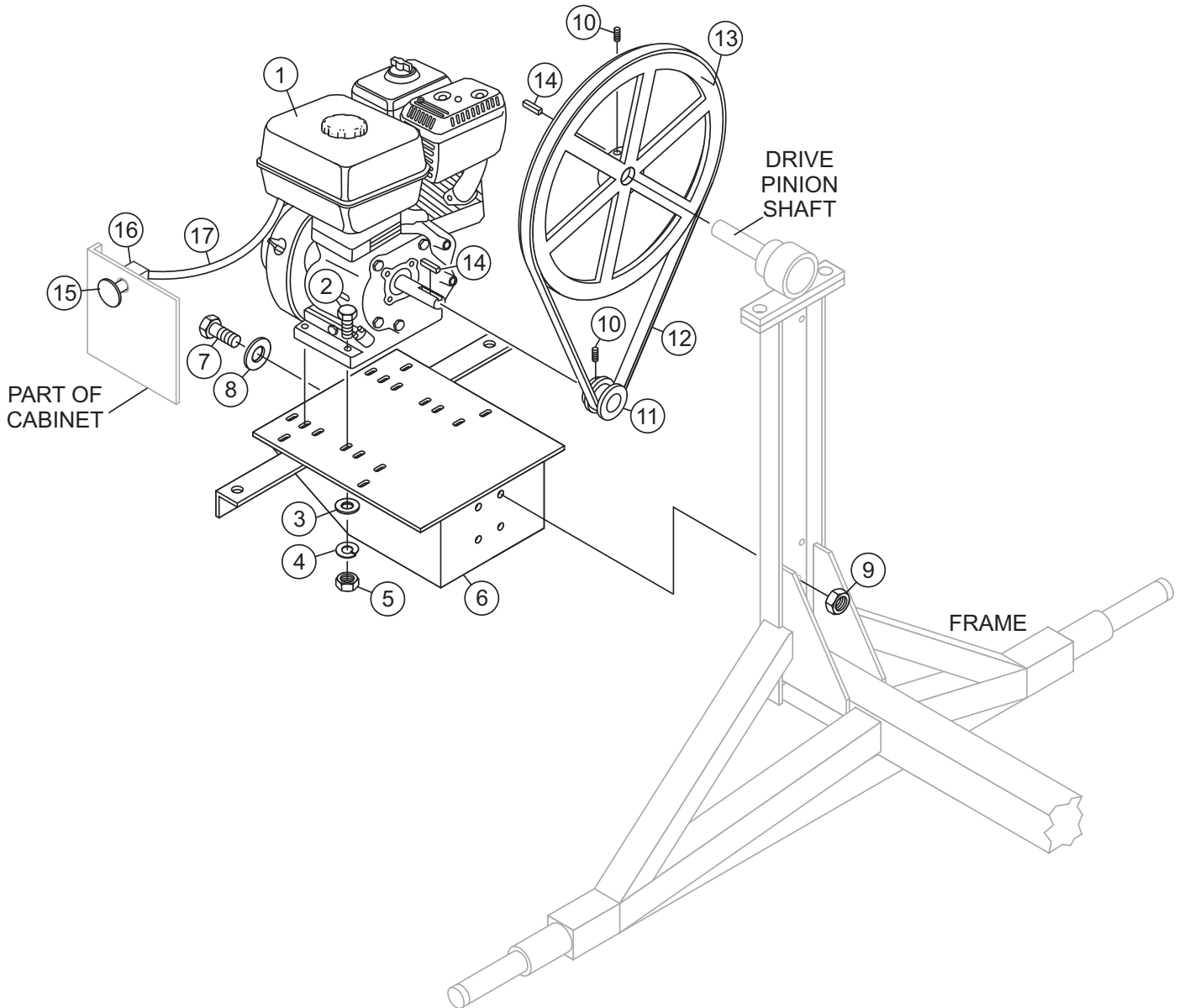
CABINET ASSY.



CABINET ASSY.

<u>NO.</u>	<u>PART NO.</u>	<u>PART NAME</u>	<u>QTY.</u>	<u>REMARKS</u>
1	514052	CABINET	1	
2	491010	RUBBER LATCH ASSY.	2	
3	1307	SCREW, PHP 8-32 X 1/2 PLATED	6	
4	492312	BOLT, 3/8" NC X 1-1/4" G2	2	
5	3019092	WASHER, FLAT 3/8"	2	
6	501028	SPACER	2	
7	EM969013	NUT, NYLOC 3/8"	2	
8	492357	BOLT, 1/4" NC X 1" G5	4	
9	EM923057	WASHER, 1/4"	4	
10	2101402	WASHER, LOCK 1/4"	4	
11	2101428	NUT, 1/4-20	4	

ENGINE ASSY.



ENGINE ASSY.

<u>NO.</u>	<u>PART NO.</u>	<u>PART NAME</u>	<u>QTY.</u>	<u>REMARKS</u>
1	GX240U1QA2	ENGINE, HONDA 8.0 HP	1	
2	492378	BOLT, 3/8" NC X 1-3/4" G5	4	
3	3019092	WASHER, FLAT 3/8"	4	
4	0166 A	WASHER, LOCK 3/8"	4	
5	1456	NUT, HEX 3/8 - 16	4	
6	516648	ENGINE BASE PLATE	1	
7	EM963692	BOLT, HHCS 1/2 - 13 X 1-1/2	4	
8	EM621	WASHER, 1/2"	4	
9	492584	NUT, LOCK 1/2"	4	
10	492468	SCREW, SET 5/16"	2	
11	504075	PULLEY, SMALL	1	
12	EM493399	V-BELT	1	
13	514060	PULLEY, LARGE	1	
14	500214	KEY, SQUARE 1/4 X 1/4 X 1-1/2	2	
15	29174-001	BUTTON, STOP	1	
16	29173-001	SWITCH, STOP	1	
17	510573C	HARNESS, STOP SWITCH	1	