

OPERATION AND PARTS MANUAL



**MULTIQUIP/STOW
MODEL BP-25H
GASOLINE BACKPACK
VIBRATOR
(HONDA GXH50QXA GASOLINE ENGINE)**

Revision #7 (12/19/07)

THIS MANUAL MUST ACCOMPANY THE EQUIPMENT AT ALL TIMES.

BP-25H GASOLINE VIBRATOR — TABLE OF CONTENTS

Multiquip BP-25H Concrete Gasoline Vibrator

Proposition 65 Warning	2
Silicosis/Respiratory Warnings	3
Table of Contents	4
Parts Ordering Procedures	5
Specifications (Engine)	7
Dimensions	8
Safety Message Alert Symbols	9-10
Rules For Safe Operation	11-12
General Information	13
Vibrator Components	14
Engine Components	15
Pre-Inspection (Engine)	16
Head and Shaft Selections	17
Head and Shaft Connections	18-19
Protective Sleeve Installation	20
Initial Start-up (Engine)	21
Operation	22
Engine Shutdown	23
Maintenance (Engine)	24-26
Preparation for Long-Term Storage	27
Troubleshooting (Engine)	28-29
Explanation of Code in Remarks	30
Suggested Spare Parts	31

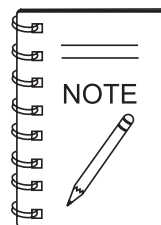
Component Drawing

Nameplate and Decals	32-33
Vibrator Assembly	34-35
Frame Assembly	36-37

Honda GXH50QXA Engine

Air Cleaner Assembly	38-39
Camshaft Assembly	40-41
Carburetor Assembly	42-43
Control Assembly	44-45
Crankcase Cover Assembly	46-47
Crankshaft/Balancer Assembly	48-49
Cylinder Barrel Assembly	50-51
Fan Cover Assembly	52-53
Fly Wheel and Ignition Coil Assembly	54-55
Fuel Tank Assembly	56-57
Oil Case Assembly	58-59
Piston and Connecting Rod Assembly	60-61
Recoil Starter Assembly	62-63
Tools (Spark Plug)	64-65
Labels Assembly	66-67

Terms and Conditions of Sale	64
------------------------------------	----



***Specification and part number are
subject to change without notice.***

BP-25H GASOLINE VIBRATOR — DIMENSIONS

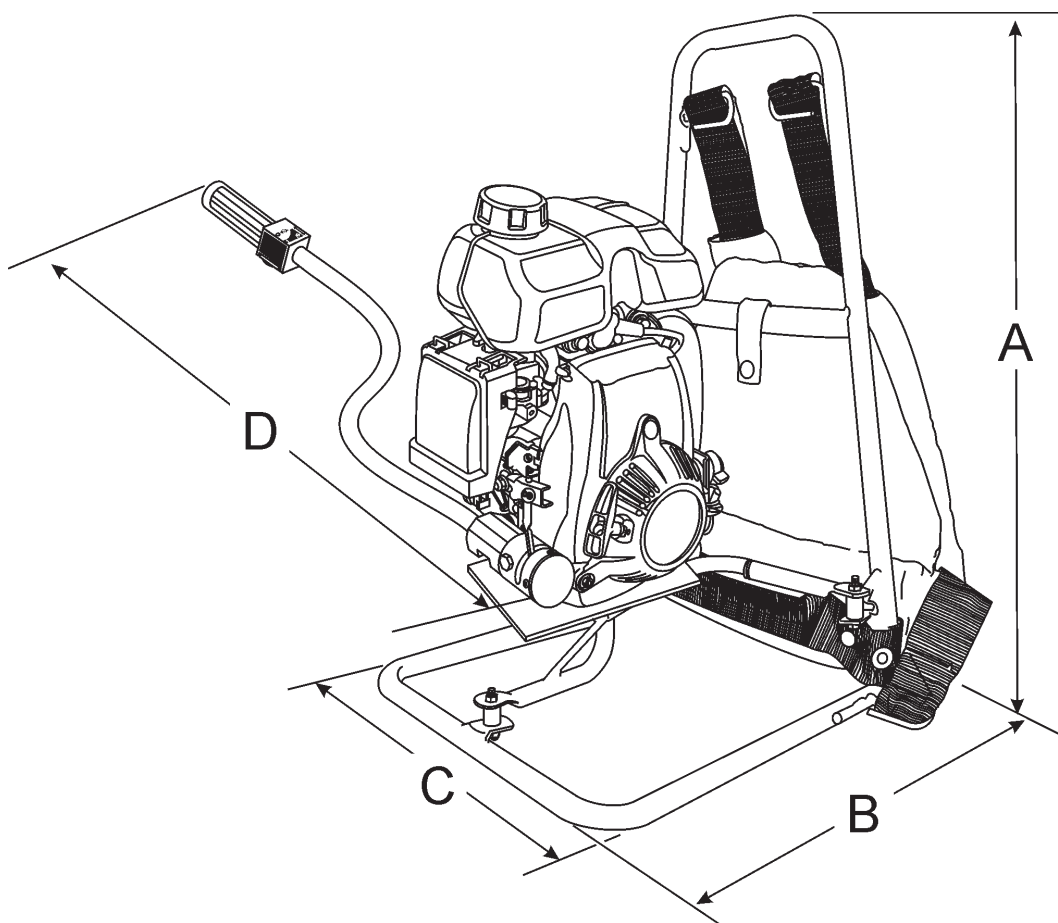


Figure 1. Dimensions (Frame)

TABLE 2. Dimensions (Frame)	
Reference Letter	Dimension ft. (mm.)
A	23.0 in. (584 mm.)
B	13.75 in. (349 mm.)
C	13.0 in. (330 mm.)
D	21.0 in. (533 mm.)

BP-25H GASOLINE VIBRATOR — HEAD AND SHAFT CONNECTIONS

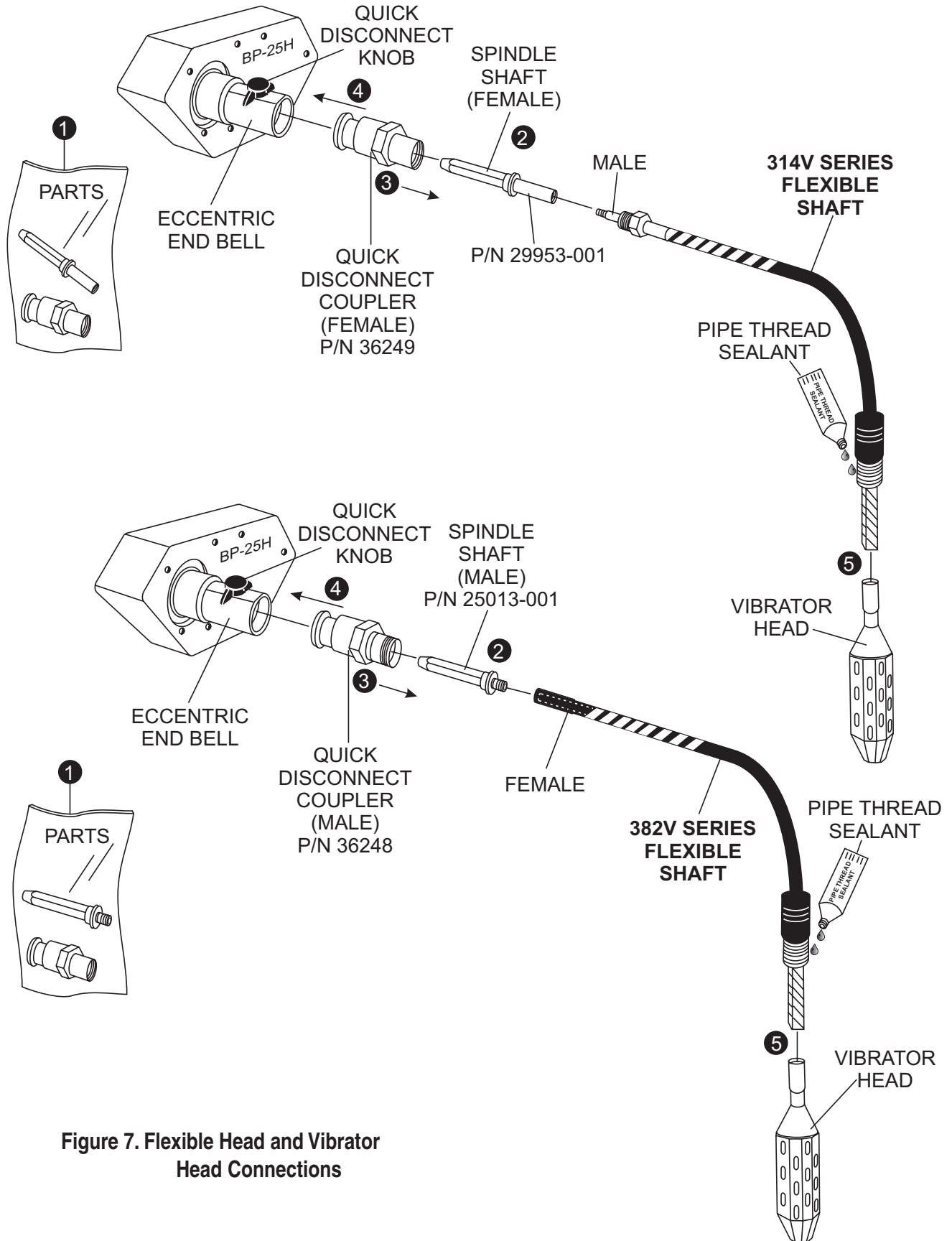
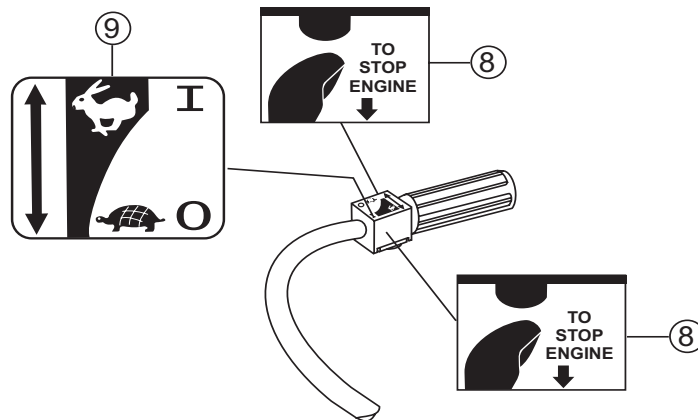
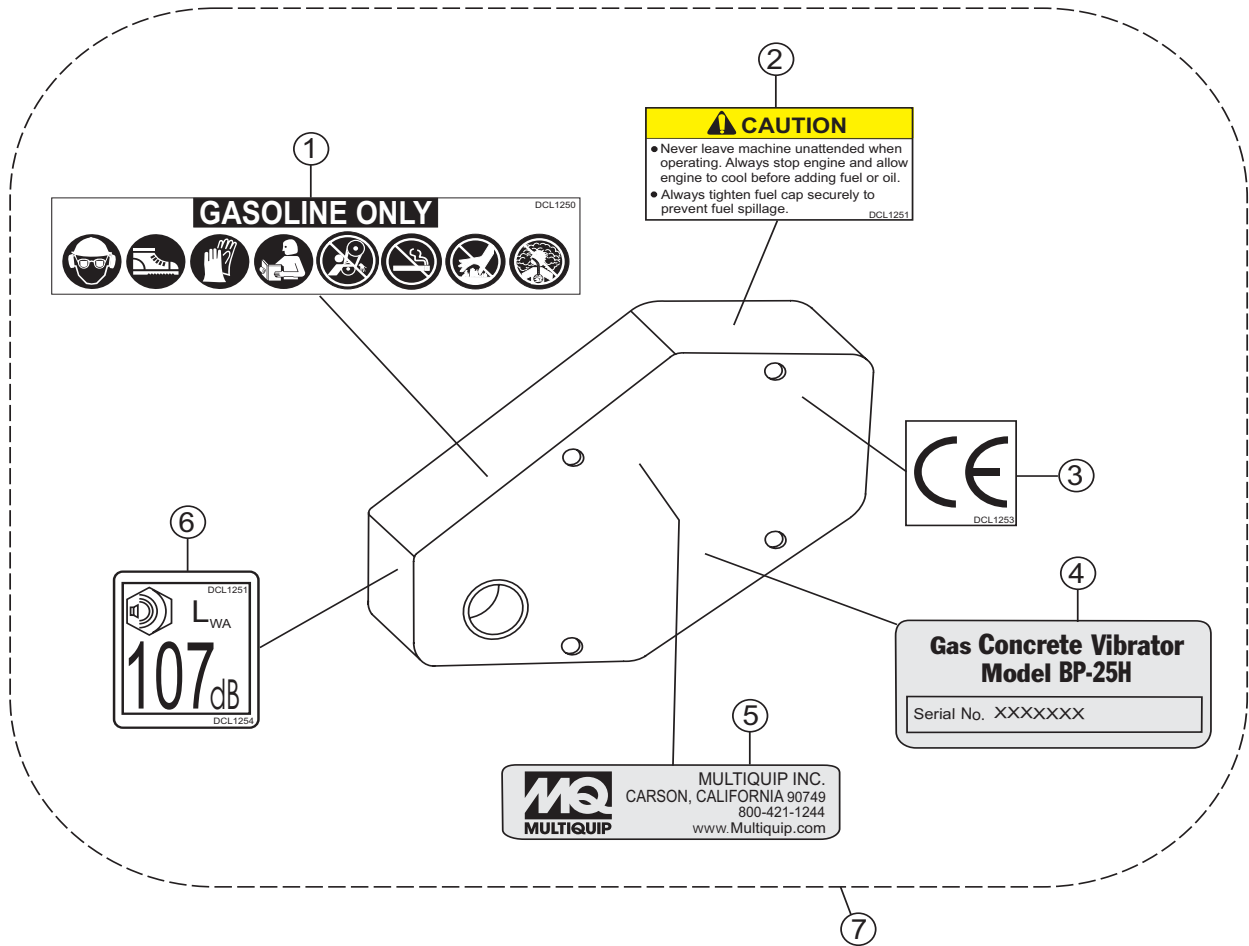


Figure 7. Flexible Head and Vibrator Head Connections

BP-25H GASOLINE VIBRATOR — NAMEPLATE AND DECALS ASSY.

NAMEPLATE AND DECALS ASSY.



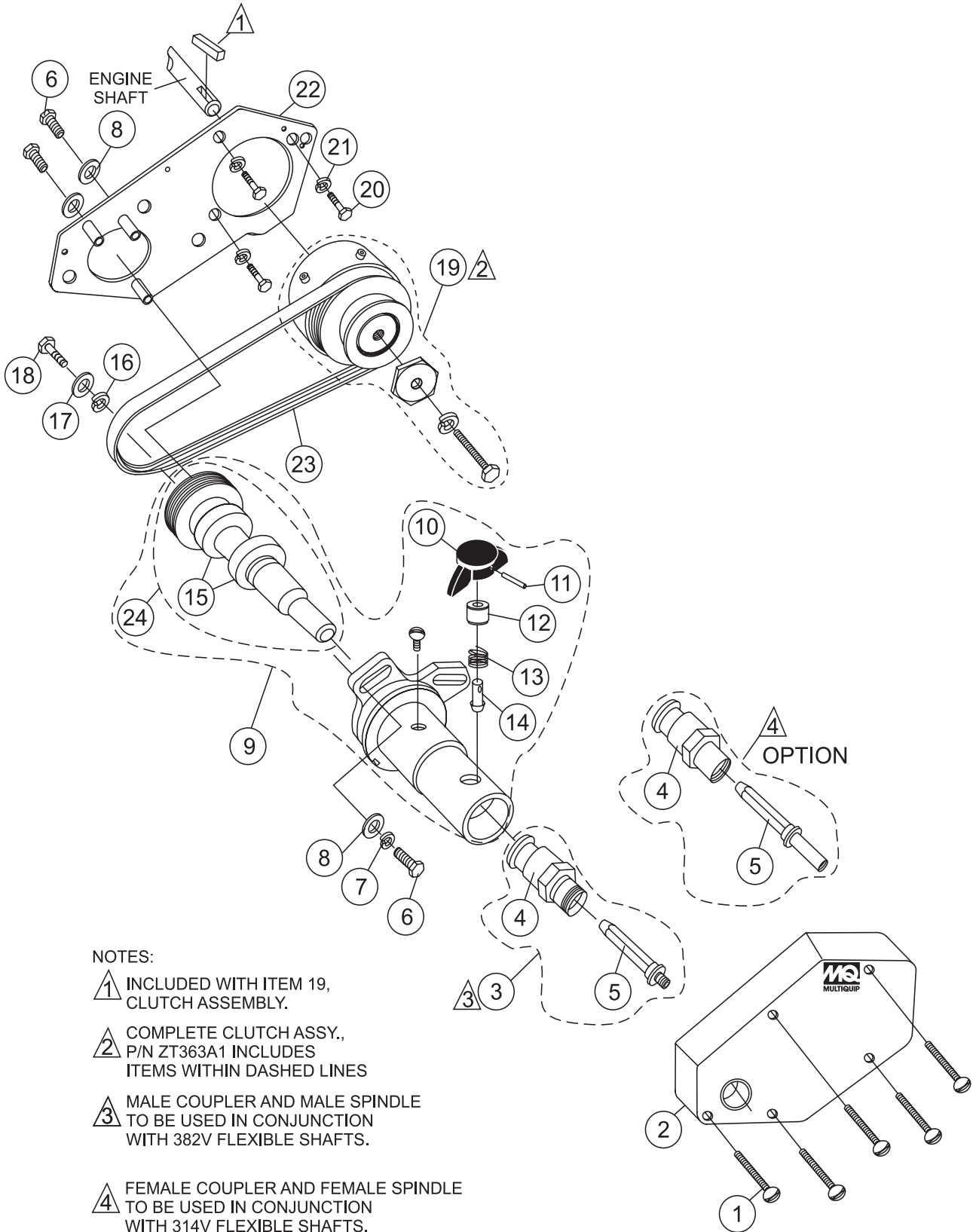
BP-25H GASOLINE VIBRATOR — NAMEPLATE AND DECALS ASSY.

NAMEPLATE AND DECALS ASSY.

<u>NO.</u>	<u>PART NO.</u>	<u>PART NAME</u>	<u>QTY.</u>	<u>REMARKS</u>
1#		DECAL, MULTI/GASOLINE	1	
2#		DECAL, CAUTION	1	
3#		DECAL, CE LOGO	1	
4#		DECAL, NAMEPLATE	1CONTACT MQ PARTS DEPT.
5#		DECAL, MQ LOGO	1	
6#		DECAL, NOISE LEVEL	1INCLUDES ITEMS W#
7	DCLKITBP25	KIT, DECALS BP-25	1	
8	ZT101AE1	DECAL, STOP ENGINE	1	
9	ZT101AD1	DECAL, THROTTLE SPEED	1	

BP-25H GASOLINE VIBRATOR — VIBRATOR ASSY.

VIBRATOR ASSY.ASSY.



NOTES:

- ① INCLUDED WITH ITEM 19, CLUTCH ASSEMBLY.
- ② COMPLETE CLUTCH ASSY., P/N ZT363A1 INCLUDES ITEMS WITHIN DASHED LINES
- ③ MALE COUPLER AND MALE SPINDLE TO BE USED IN CONJUNCTION WITH 382V FLEXIBLE SHAFTS.
- ④ FEMALE COUPLER AND FEMALE SPINDLE TO BE USED IN CONJUNCTION WITH 314V FLEXIBLE SHAFTS.

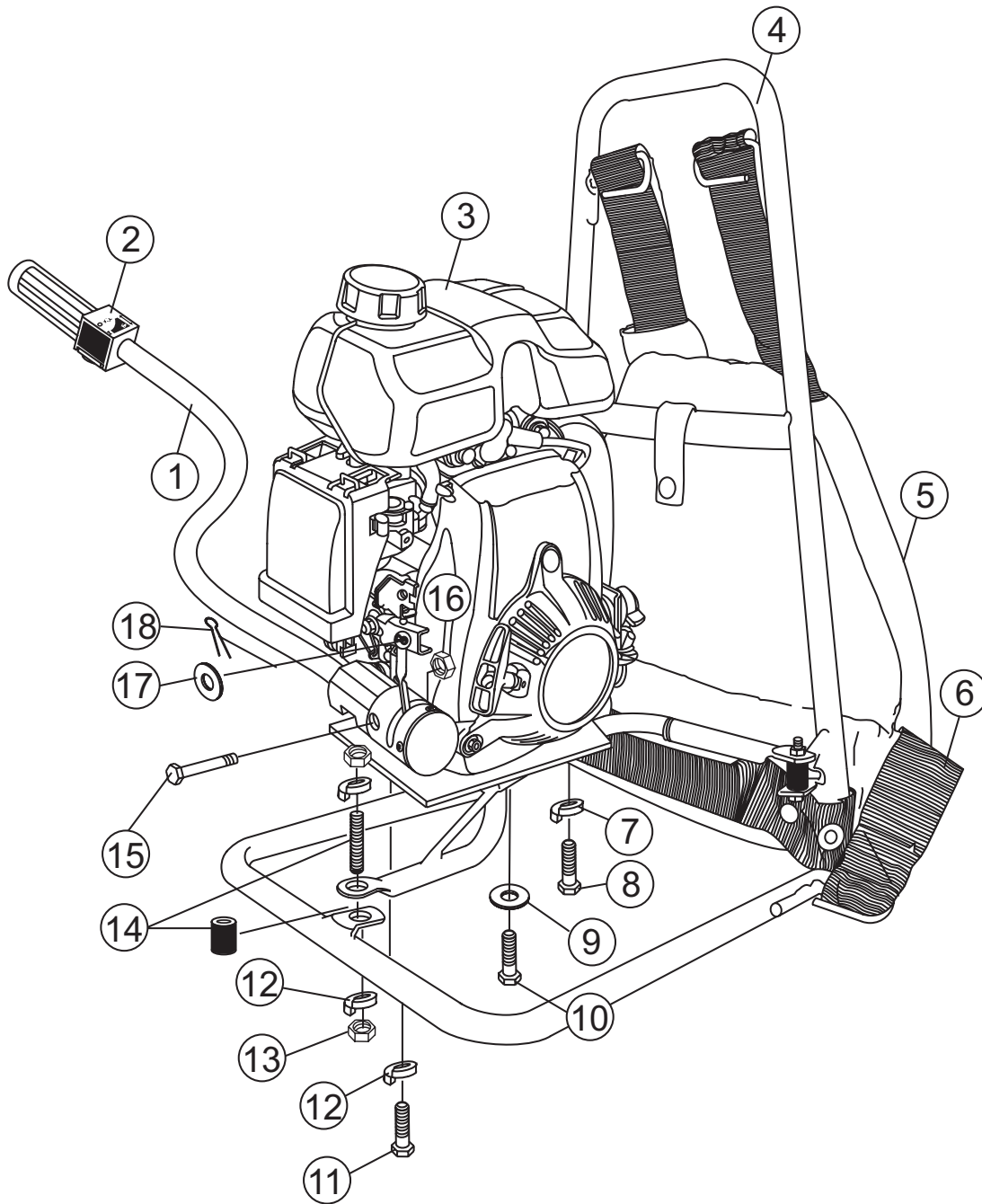
BP-25H GASOLINE VIBRATOR — VIBRATOR ASSY.

VIBRATOR ASSY.

<u>NO.</u>	<u>PART NO.</u>	<u>PART NAME</u>	<u>QTY.</u>	<u>REMARKS</u>
1	ZT111N109	10-32 X 2-3/4" SLOTTED PAN HEAD SCREW	7	
2	ZT346T1	BELT GUARD	1	
3	ZT1145AN1	QD ADAPTER	1	INCLUDES ITEMS W/*
4	36249	QD COUPLER, FEMALE	1	USED W/314V SHAFTS
4*	36248	QD COUPLER, MALE	1	USED W/382V SHAFTS
5	29957-001	SPINDLE SHAFT, FEMALE	1	USED W/314V SHAFTS
5*	25013-001	SPINDLE SHAFT, MALE	1	USED W/382V SHAFTS
6	ZT58A29	SCREW, HEX 5/16-18 X 7/8"	6	
7	ZT130A10	WASHER, SPLIT LOCK 5/16"	6	
8	ZT127A12	WASHER, FLAT STEEL 5/16"	6	
9	ZT6750K1	COUNTERSHAFT ASSEMBLY	1	INCLUDES ITEMS W/#
10#	ZT389A1	Q.D. RELEASE KNOB, PLASTIC	1	
11#	ZT81A78	PIN, SPRING 5/32 X 1"	1	
12#	ZT385B1	Q.D. PLUNGER GUIDE	1	
13#	ZT90G1	Q.D. SPRING, COMPRESSION	1	
14#	445C1	Q.D. PLUNGER PIN	1	
15#%	ZT207R4	SHAFT BEARING	2	
16	ZT130A9	WASHER, SPLIT LOCK MED 1/4"	1	
17	ZT127A11	WASHER, FLAT STEEL ZINC 1/4"	1	
18	ZT58A3	HEX HEAD CAP SCREW 1/4-20 X 3/4"	1	
19	ZT363A1	CLUTCH ASSEMBLY, COMPLETE	1	
20	ZT58B3	HEX HEAD CAP SCREW 1/4-28 X 3/4"	4	
21	ZT130A9	WASHER, LOCK MED 1/4"	4	
22	ZT386CT1	TRANS. MOUNTING PLATE	1	
23	ZT37D3	BP25 POLY V-BELT, 6 GROOVE	1	
24#	ZT229A1	DRIVEN SPINDLE ASSY.	1	INCLUDES ITEMS W/%

BP-25H GASOLINE VIBRATOR — FRAME ASSY.

FRAME ASSY.



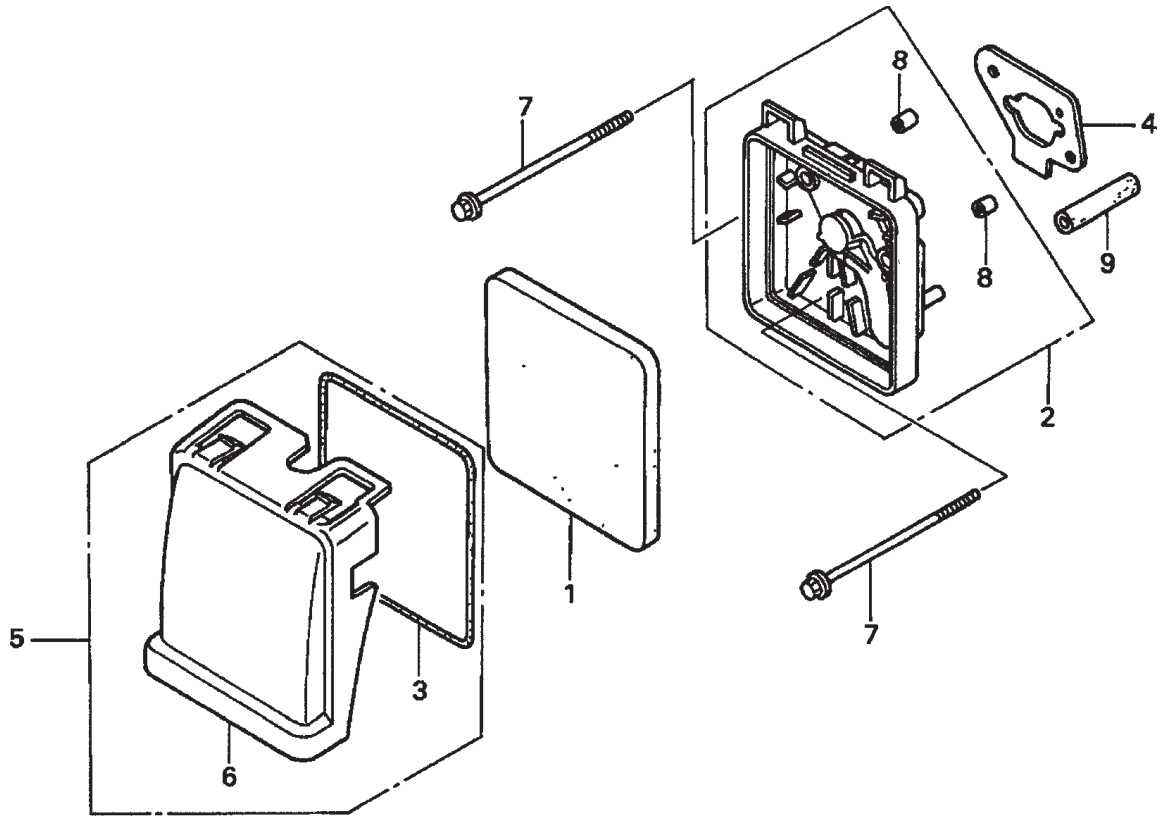
BP-25H GASOLINE VIBRATOR — FRAME ASSY.

FRAME ASSY.

<u>NO.</u>	<u>PART NO.</u>	<u>PART NAME</u>	<u>QTY.</u>	<u>REMARKS</u>
1	ZT316AG2	RH THROTTLE ARM ASSY.	1	
2	ZT177S1	KILL SWITCH, MOMENTARY PUSHBUTTON RED	1	
3	ZT6850X1	ENGINE, HONDA GXH50	1	
4	ZT374AR1	FRAME	1	
5	ZT45B1	BACKPACK PAD W/VELCRO STRAP	1	
6	ZT478C1	BACKPACK SHOULDER STRAP ASSY.	1	
7	ZT130A9	WASHER, SPLIT LOCK MED 1/4"	4	
8	ZT111T28	HEX HEAD CAP SCREW M6 X 20 MM	4	
9	ZT127A11	WASHER, FLAT STEEL ZINC 1/4"	1	
10	ZT58A1	HEX HEAD CAP SCREW 1/4-20 X 1/2"	1	
11	ZT58A27	HEX HEAD CAP SCREW 15/16-18 X 5/8"	2	
12	ZT130A10	WASHER, SPLIT LOCK 5/16"	8	
13	ZT72F2	NUT, HEX 5/16-18 X 1/2"	6	
14	ZT319D1	RUBBER SHOCK MOUNT W/STUD	3	
15	ZT58A8	HEX HEAD CAP SCREW 1/4-20 X 1-3/4"	1	
16	ZT74A8	1/4" NYLOCK HEX NUT	1	
17	ZT127A11	WASHER, FLAT STEEL ZINC 1/4"	1	
18	ZT81F8	COTTER PIN THROTTLE, 3/32 X 1/2"	1	

HONDA GXH50QXA ENGINE — AIR CLEANER ASSY.

AIR CLEANER ASSY.



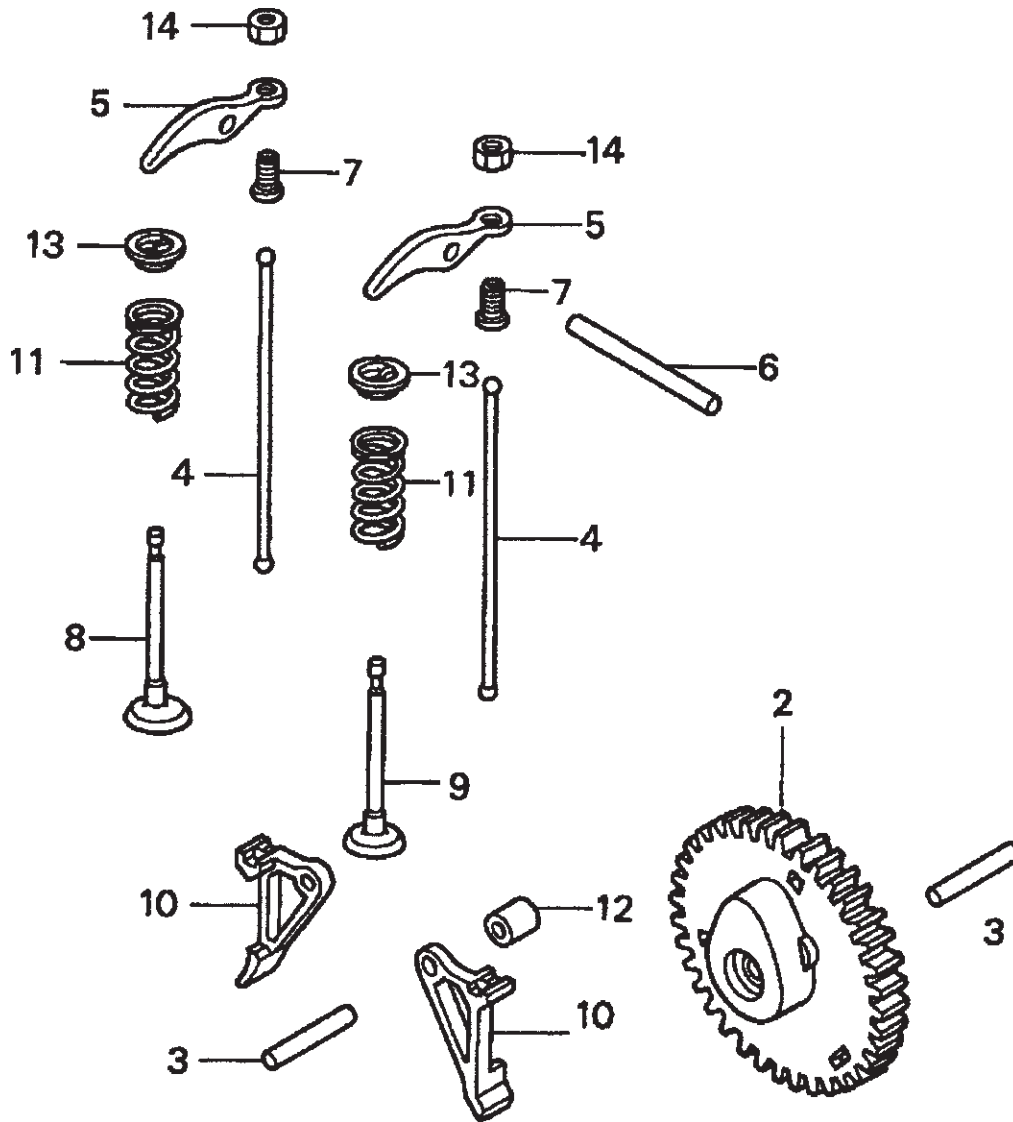
HONDA GXH50QXA ENGINE — AIR CLEANER ASSY.

AIR CLEANER ASSY.

<u>NO.</u>	<u>PART NO.</u>	<u>PART NAME</u>	<u>QTY.</u>	<u>REMARKS</u>
1	17211ZM7000	AIR CLEANER ELEMENT	1	
2	17220ZM7000	AIR CLEANER HOUSING	1	INCLUDES ITEMS W/*
3#	17227ZM7000	AIR CLEANER SEAL	1	
4	17228ZM7000	AIR CLEANER GASKET	1	
5	17230ZM7000	AIR CLEANER COVER ASSY.	1	INCLUDES ITEMS W/#
6#	17231ZM7000	AIR CLEANER COVER	1	
7	90004ZM7000	FLANGE BOLT 5X75	2	
8*	91503ZM7000	AIR CLEANER COLLAR	2	
9	950057000330M	VACUUM BULK HOSE 7X3000 (7X75)	1	

HONDA GXH50QXA ENGINE — CAMSHAFT ASSY.

CAMSHAFT ASSY.



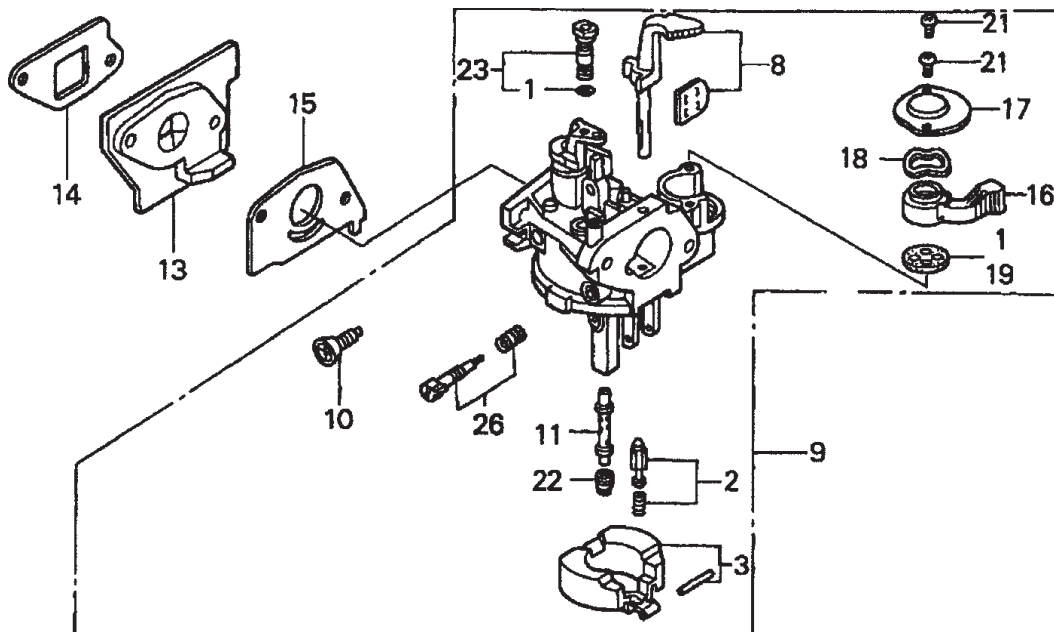
HONDA GXH50QXA ENGINE — CAMSHAFT ASSY.

CAMSHAFT ASSY.

<u>NO.</u>	<u>PART NO.</u>	<u>PART NAME</u>	<u>QTY.</u>	<u>REMARKS</u>
2	14100ZM7010	CAMSHAFT ASSY.	1	
3	14126Z0G003	ROLLER 5X29.8	2	
3	90702P6R008	OIL PUMP PIN	2	
4	14410ZM7000	PUSH ROD	2	
5	14431ZM7000	VALVE ROCKER ARM	2	
6	14435ZM7003	ROLLER 4X37.8	1	
7	14451ZM7000	ROCKER ARM PIVOT	2	
8	14711ZM7000	IN. VALVE	1	
9	14721ZM7000	EX. VALVE	1	
10	14731ZM7013	LIFTER VALVE	2	
11	14751ZM7000	VALVE SPRING	2	
12	14754ZM7000	LIFTER COLLAR	1	
13	14771ZM3000	VALVE SPRING RETAINER	2	
14	90206KM3000	TAPPET ADJ. NUT	2	

HONDA GXH50QXA ENGINE — CARBURETOR ASSY.

CARBURETOR ASSY.



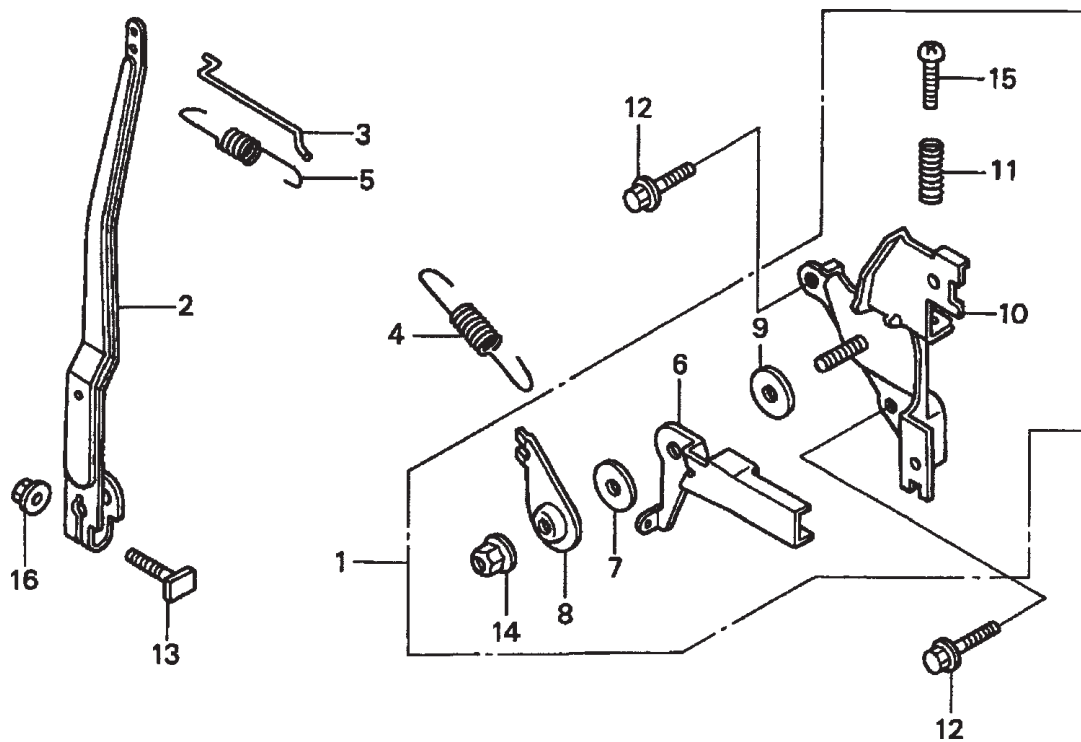
HONDA GXH50QXA ENGINE — CARBURETOR ASSY.

CARBURETOR ASSY.

<u>NO.</u>	<u>PART NO.</u>	<u>PART NAME</u>	<u>QTY.</u>	<u>REMARKS</u>
1*	16010ZG1015	GASKET SET	1	
2*	16011ZE0005	FLOAT VALVE SET	1	
3*	16013ZG0811	FLOAT SET	1	
7*	16028ZG0811	SCREW SET	1	
8*	16044ZM7003	CHOKE SET	1	
9	16100ZM7G11	CARBURETOR ASSY. (BF32E A)	1	INCLUDES ITEMS W/* S/N 1068857 AND BELOW
9	16100ZM7G13	CARBURETOR ASSY. (BF32E C)	1	INCLUDES ITEMS W/* S/N 1068858 AND ABOVE
10*	16124ZE0005	THROTTLE STOP SCREW	1	
11*	16166ZM7003	MAIN NOZZLE	1	
13	16211ZM7000	CARBURETOR INSULATOR	1	
14	16212ZM7000	INSULATOR GASKET	1	
15	16221ZG0801	CARBURETOR GASKET	1	
16*	16953ZG0812	VALVE LEVER	1	
17*	16954ZE1812	LEVER SETTING PLATE	1	
18*	16956ZE1811	LEVER SPRING VALVE	1	
19*	16957ZE1812	VALVE GASKET	1	
21	93500030060H	PAN SCREW	2	
22	99101ZG00500	MAIN JET #50, OPTIONAL	1	
22	99101ZG00520	MAIN JET #52, OPTIONAL	1	
22*	99101ZG00550	MAIN JET #55	1	
23*	99204ZE20350	PILOT JET SET #35	1	
24*	16015ZG0811	FLOAT CHAMBER SET	1	
25*	16024ZE1811	DRAIN SCREW SET	1	
26*	16016ZH7W01	SCREW SET	1	

HONDA GXH50QXA ENGINE — CONTROL ASSY.

CONTROL ASSY.



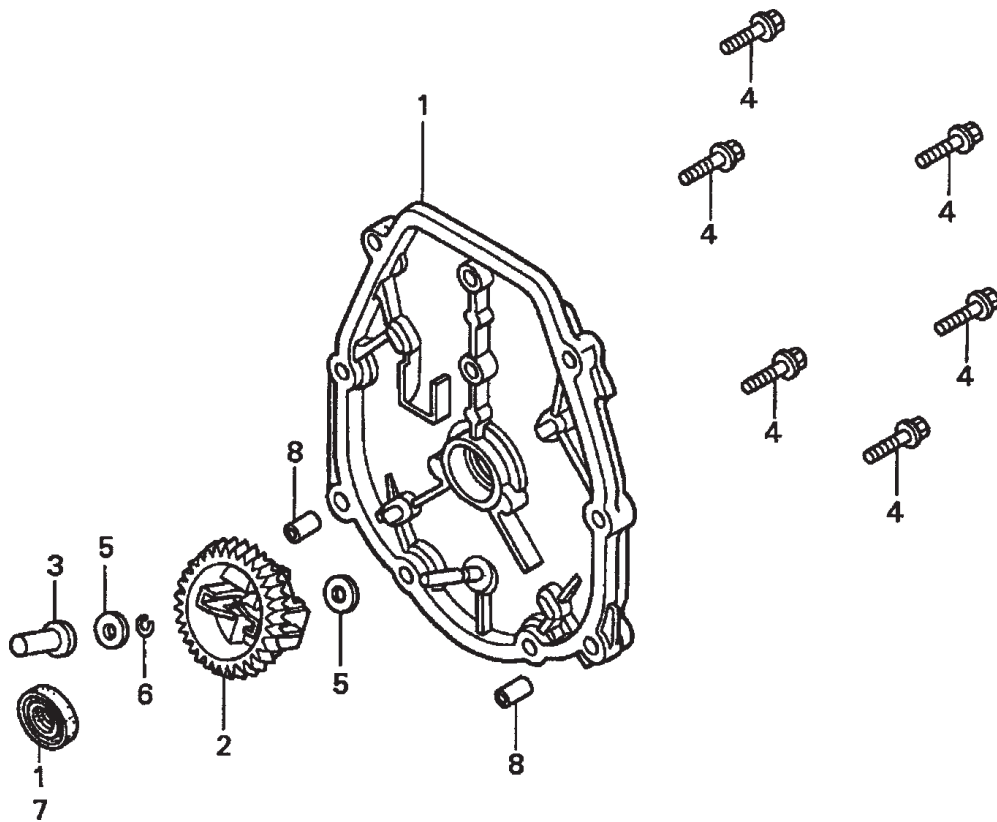
HONDA GXH50QXA ENGINE — CONTROL ASSY.

CONTROL ASSY.

<u>NO.</u>	<u>PART NO.</u>	<u>PART NAME</u>	<u>QTY.</u>	<u>REMARKS</u>
1	16500ZM7000	CONTROL ASSY.	1	INCLUDES ITEMS W/*
2	16551ZM7000	GOVERNOR ARM	1	
3	16555ZM7000	GOVERNOR ROD	1	
4	16561ZM7000	GOVERNOR SPRING	1	
5*	16562ZM7000	THROTTLE RETURN SPRING	1	
6*	16571ZM7000	CONTROL LEVER	1	
7*	16574ZE1000	LEVER SPRING	1	
8*	16575ZH8000	CONTROL LEVER WASHER	1	
9*	16578ZE1000	CONTROL LEVER SPACER	1	
10*	16580ZM7000	CONTROL BASE	1	
11*	16584ZE3790	CONTROL ADJUSTING SPRING	1	
12	90003892000	FLANGE BOLT	2	
13	90015ZE5010	GOVERNOR ARM BOLT	1	
14*	90114SA0000	SELF LOCK NUT, 6MM	1	
15*	93500050200A	PAN SCREW, 5X20	1	
16	9405006000	FLANGE NUT, 6MM	1	

HONDA GXH50QXA ENGINE — CRANKCASE COVER ASSY.

CRANKCASE COVER ASSY.



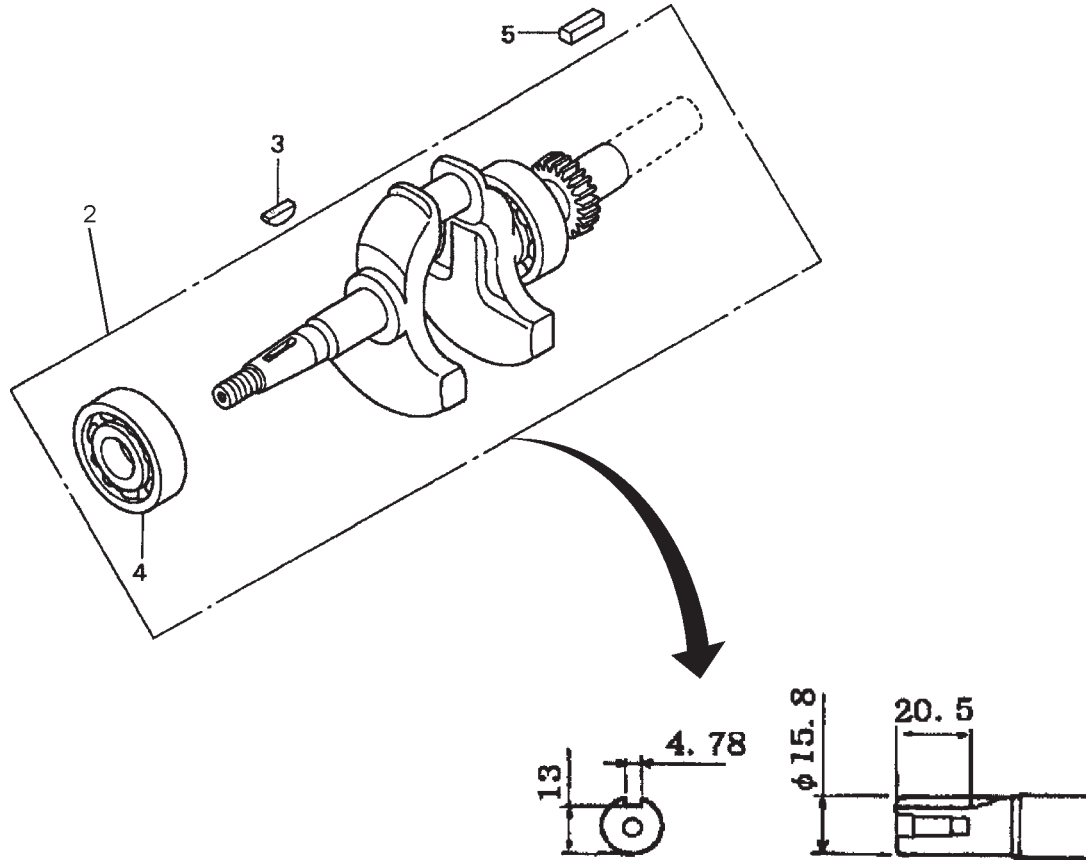
HONDA GXH50QXA ENGINE — CRANKCASE COVER ASSY.

CRANKCASE COVER ASSY.

<u>NO.</u>	<u>PART NO.</u>	<u>PART NAME</u>	<u>QTY.</u>	<u>REMARKS</u>
1	11340ZM7801	CRANKCASE SIDE COVER	1	S/N 1199157 AND BELOW
1	11340ZM7802	CRANKCASE SIDE COVER	1	S/N 1199158 AND ABOVE
2	16510ZM7000	GOVERNOR ASSY.	1	
3	16531ZM7000	GOVERNOR SLIDER	1	
4	90006ZM7000	FLANGE BOLT, 5X23	6	
5	90441ZM7000	WASHER, 4.2X13	2	
6	90602ZM7000	GOVERNOR HOLDER CLIP	1	
7	91202HC5005	OIL SEAL, 17X27X5 (KOYO)	1	
8	9430106100	DOWEL PIN A 6X10	2	

HONDA GXH50QXA ENGINE — CRANKSHAFT/BALANCER ASSY.

CYLINDER BARREL ASSY.



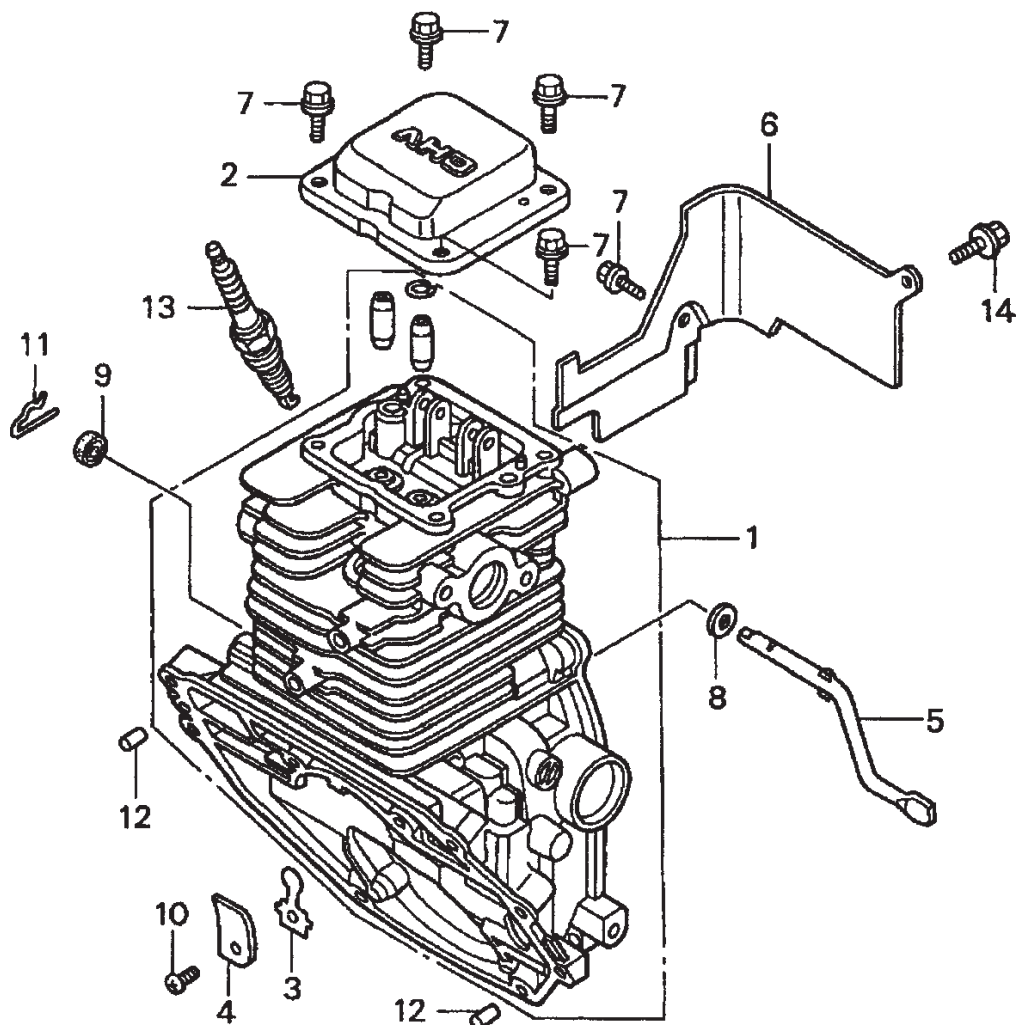
HONDA GXH50QXA ENGINE — CRANKSHAFT/BALANCER ASSY.

CRANKSHAFT/BALANCER ASSY.

<u>NO.</u>	<u>PART NO.</u>	<u>PART NAME</u>	<u>QTY.</u>	<u>REMARKS</u>
2	13310ZM7800	CRANKSHAFT	1	INCLUDES ITEMS W/*
3	13331ZM7000	SPECIAL KEY	1	
4*	961006203000	RADIAL BALL BEARING	1	
5	90741ZM7000	KEY 4.78MM, OPTIONAL	1	

HONDA GXH50QXA ENGINE — CYLINDER BARREL ASSY.

CYLINDER BARREL ASSY.



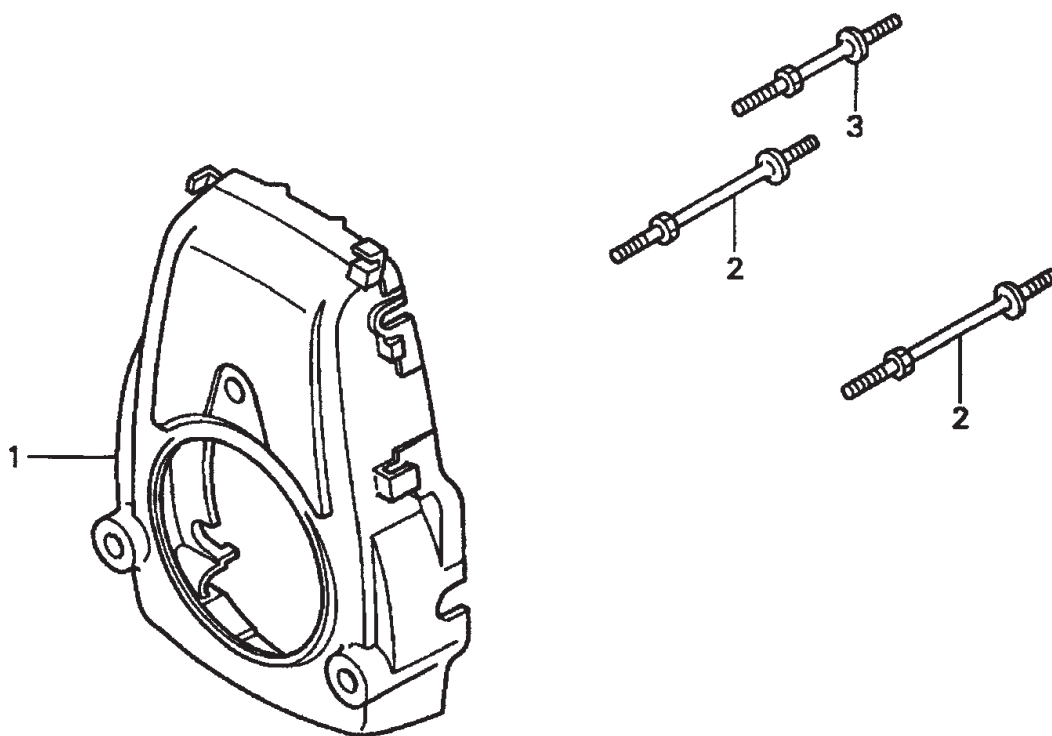
HONDA GXH50QXA ENGINE — CYLINDER BARREL ASSY.

CYLINDER BARREL ASSY.

<u>NO.</u>	<u>PART NO.</u>	<u>PART NAME</u>	<u>QTY.</u>	<u>REMARKS</u>
1	12100ZM7000	CYLINDER	1	
2	12311ZM7000	HEAD COVER	1	
3	15571ZM7003	OIL OUTLET VALVE	1	
4	15572ZM7000	STOPPER PLATE	1	
5	16541ZM7000	GOVERNOR ARM SHAFT	1	
6	19631ZM7000	SHROUD	1	
7	90003892000	FLANGE BOLT 5X12	5	
8	90443ZC3000	WASHER 5.2X9	1	
9	91231ZC3003	OIL SEAL 5X11X5	1	
10	93500030050A	PAN SCREW 3X5	1	
11	9425106000	LOCK PIN 6MM	1	
12	9622060150	ROLLER 6X15	2	
13	9805655757	SPARK PLUG U16SFR-UB (DENSO)	1	
13	9805655777	SPARK PLUG CR5HSB (NKG)	1	
14	90003892000	FLANGE BOLT 5X12	1	

HONDA GXH50QXA ENGINE — FAN COVER ASSY.

FAN COVER ASSY.



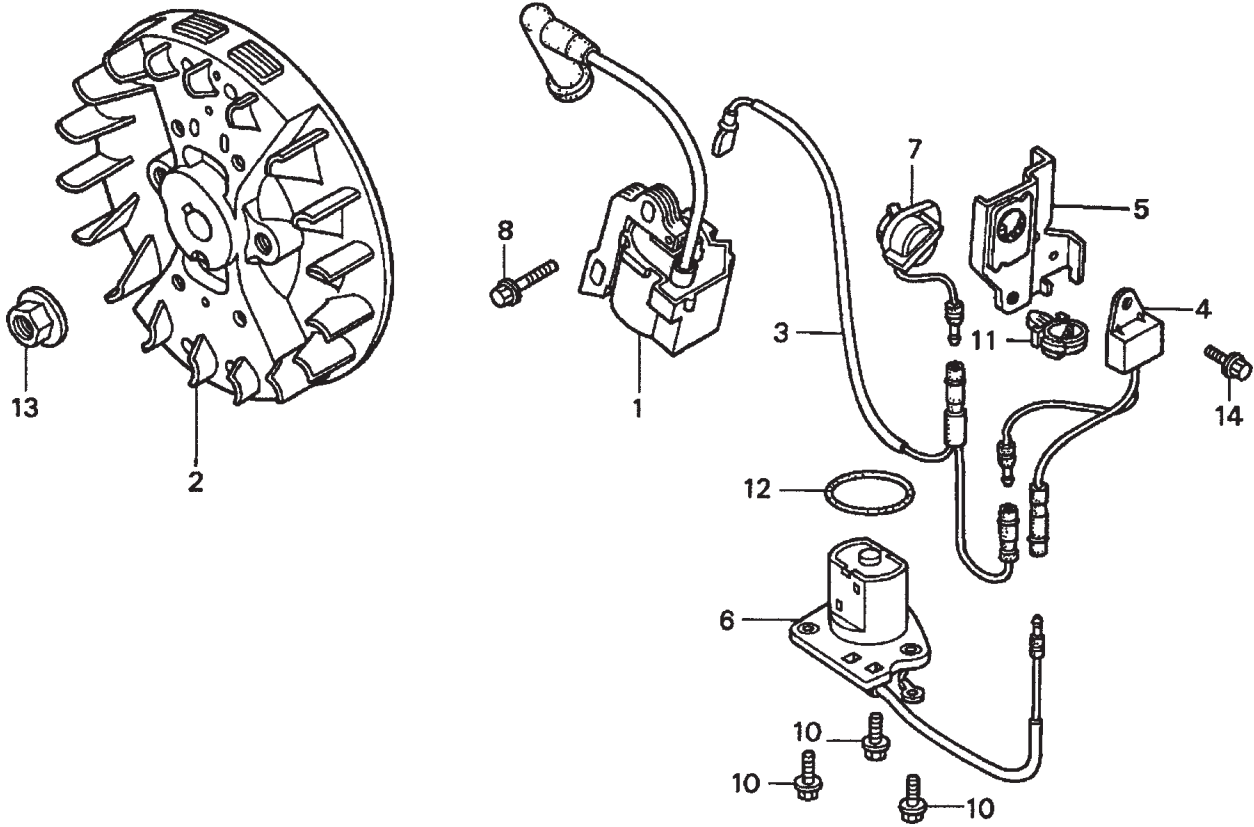
HONDA GXH50QXA ENGINE — FAN COVER ASSY.

FAN COVER ASSY.

<u>NO.</u>	<u>PART NO.</u>	<u>PART NAME</u>	<u>QTY.</u>	<u>REMARKS</u>
1	19610ZM7000ZA	FAN COVER *R8* BRIGHT RED	1	
2	90042ZM7000	STUD BOLT A	2	
3	90043ZM7000	STUD BOLT B	1	

HONDA GXH50QXA ENGINE — FLYWHEEL + IGNITION COIL ASSY.

FLYWHEEL AND IGNITION COIL ASSY.



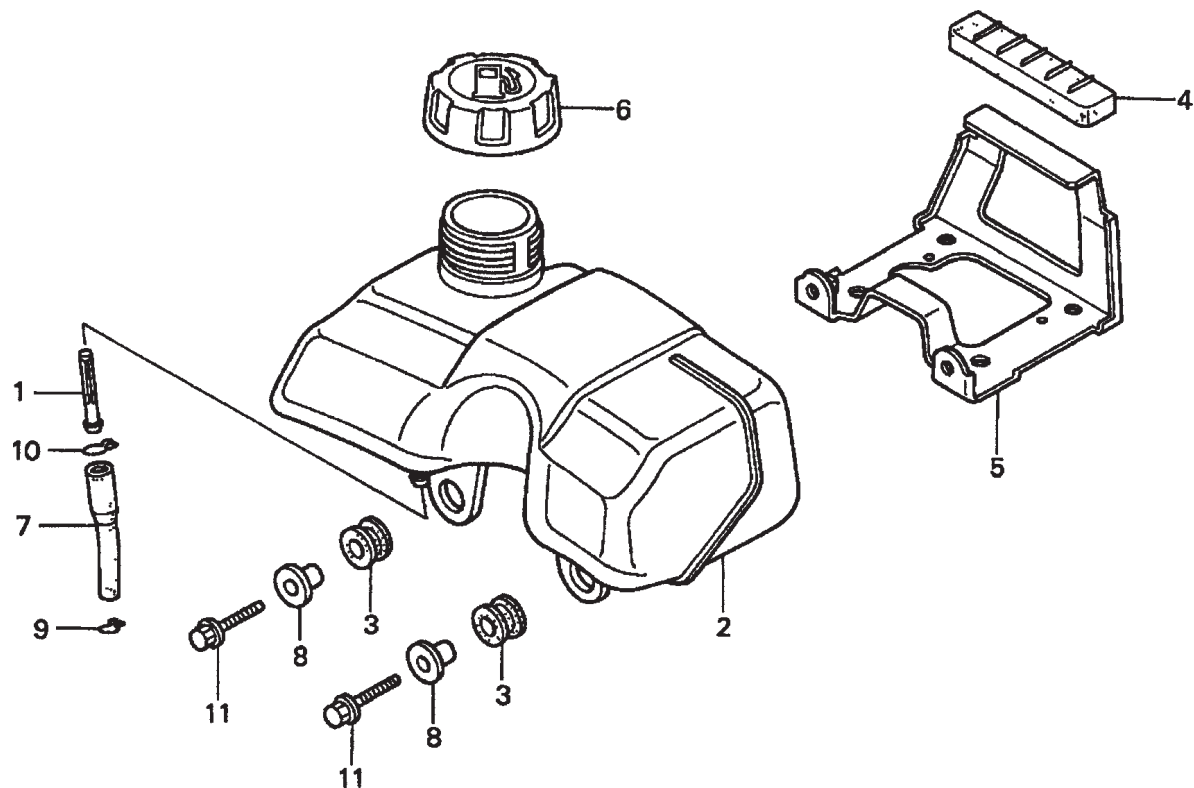
HONDA GXH50QXA ENGINE — FLYWHEEL AND IGNITION COIL ASSY.

FLY WHEEL AND IGNITION COIL ASSY.

<u>NO.</u>	<u>PART NO.</u>	<u>PART NAME</u>	<u>QTY.</u>	<u>REMARKS</u>
1	30500ZM7004	IGNITION COIL ASSY.	1	
2	31110ZM7004	FLYWHEEL	1	
3	32195ZM7800	STOP SWITCH WIRE	1	
4	34150ZH7003	OIL ALERT UNIT	1	
5	35124ZM7800	STOP SWITCH BRACKET	1	
6	35480ZM7801	OIL LEVEL SWITCH ASSY.	1	
7	36100ZE1015	ENGINE STOP SWITCH ASSY.	1	
8	90004ZC3000	FLANGE BOLT 5X20	1	
10	90012896750	FLANGE BOLT 5X14	3	
11	90684ZA0601	WIRE HARNESS CLIP	1	
12	91301ZA8003	O-RING	1	
13	9405010000	FLANGE NUT 10MM	1	
14	957010600800	FLANGE BOLT 6X8	1	

HONDA GXH50QXA ENGINE — FUEL TANK ASSY.

FUEL TANK ASSY.



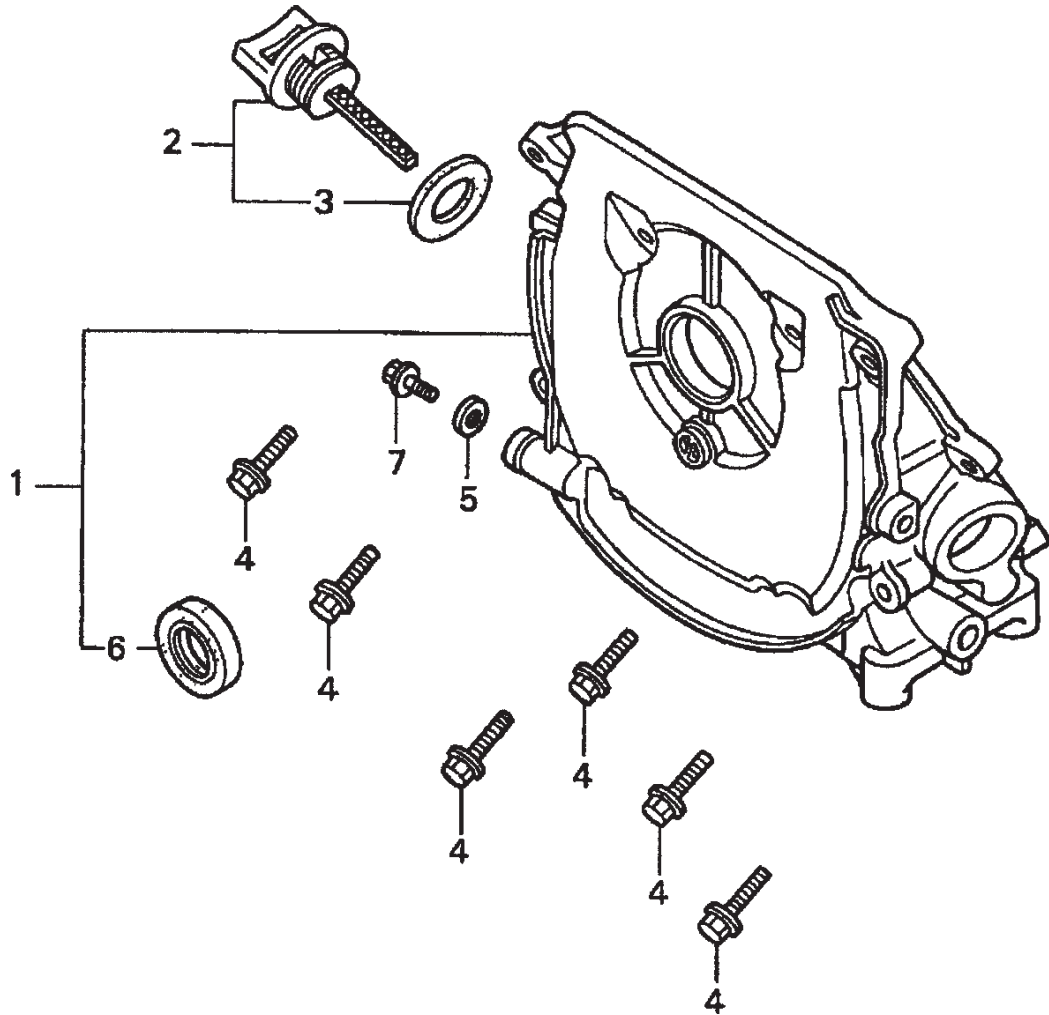
HONDA GXH50QXA ENGINE — FUEL TANK ASSY.

FUEL TANK ASSY.

<u>NO.</u>	<u>PART NO.</u>	<u>PART NAME</u>	<u>QTY.</u>	<u>REMARKS</u>
1	16952ZE6000	FUEL FILTER	1	
2	17511ZM7000	FUEL TANK	1	
3	17532ZM7000	TANK MOUNTING RUBBER A	2	
4	17533ZM7000	TANK MOUNTING RUBBER B	1	
5	17560ZM7000	FUEL TANK STAY	1	
6	17620ZL8003	FUEL TANK CAP ASSY.	1S/N 1159947 AND BELOW
6	17620ZL8013	FUEL TANK CAP ASSY.	1S/N 1159948 AND ABOVE
7	17701ZM7000	FUEL TUBE A	1	
8	19052MB4880	CANISTER MOUNT COLLAR	2	
9	8599292979	TUBE CLIP B8	1	
10	9500202120	TUBE CLIP B12	1	
11	957010602007	FLANGE BOLT 6X20	2	

HONDA GXH50QXA ENGINE — OIL CASE ASSY.

OIL CASE ASSY.



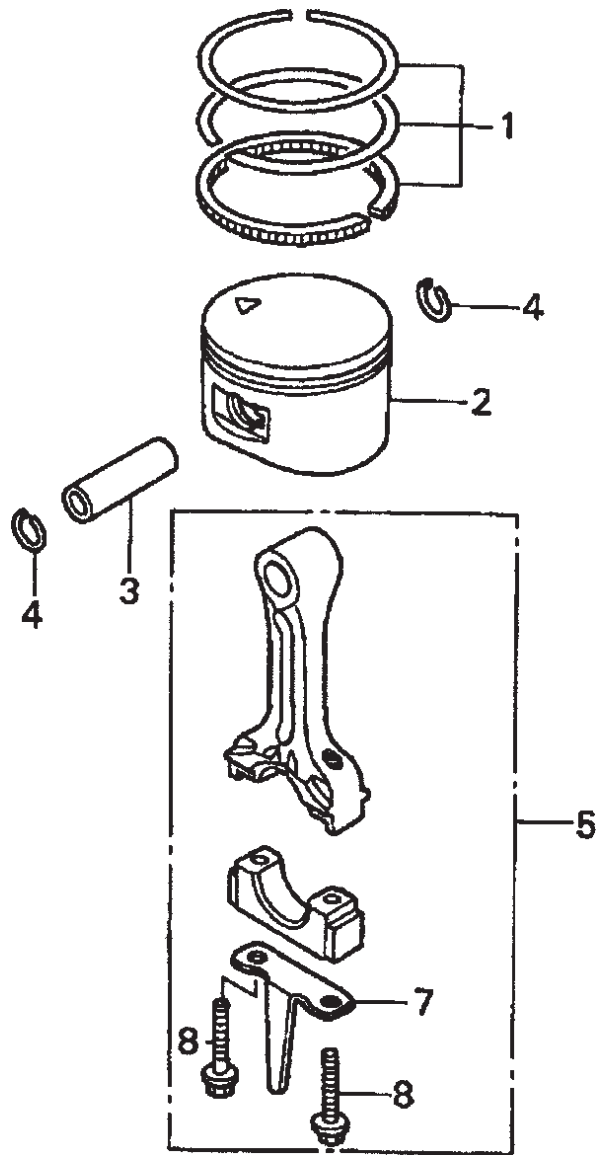
HONDA GXH50QXA ENGINE — OIL CASE ASSY.

OIL CASE ASSY.

<u>NO.</u>	<u>PART NO.</u>	<u>PART NAME</u>	<u>QTY.</u>	<u>REMARKS</u>
1	11300ZM7800	OIL CASE ASSY.	1	INCLUDES ITEMS W/*
2	15600ZM7003	OIL FILLER CAP ASSY.	1	INCLUDES ITEMS W/#
3#	15625ZE1003	OIL FILLER CAP GASKET	1	
4	90006ZM7000	FLANGE BOLT 5X23	8	
5	90471580000	WASHER 8MM	1	
6*	91202HC5005	OIL SEAL 17X27X5 (KOYO)	1	
7	957010801208	FLANGE BOLT 8X12	1	

HONDA GXH50QXA ENGINE — PISTON AND CONNECTING ROD ASSY.

PISTON AND CONNECTING ROD ASSY.



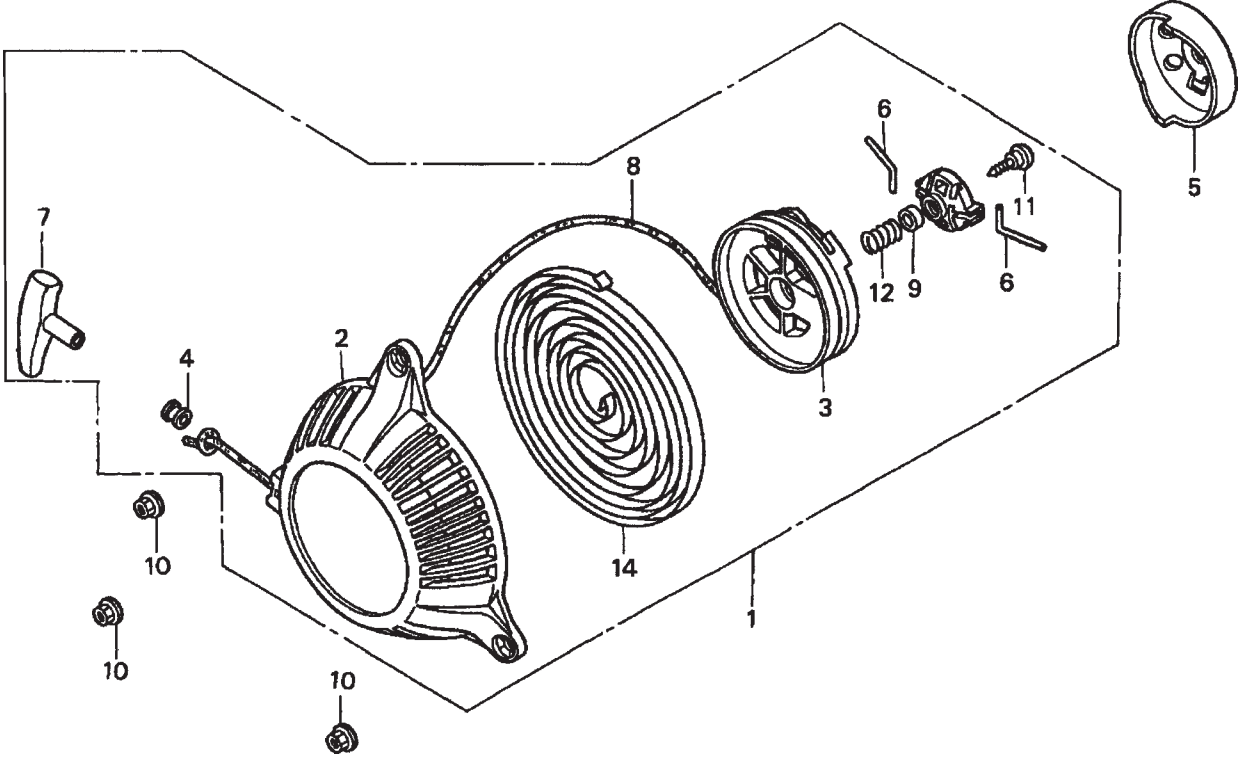
HONDA GXH50QXA ENGINE — PISTON AND CONNECTING ROD ASSY.

PISTON AND CONNECTING ROD ASSY.

<u>NO.</u>	<u>PART NO.</u>	<u>PART NAME</u>	<u>QTY.</u>	<u>REMARKS</u>
1	13010ZM7000	PISTON RING SET, STANDARD	1	
2	13101ZM7010	PISTON, STANDARD	1	
3	13111GS7000	PISTON PIN	1	
4	13115147000	PISTON PIN CLIP	2	
5	13200ZM7000	CONNECTING ROD ASSY.	1 INCLUDES ITEMS W/*
7*	13281ZM7000	CONNECTING ROD DIPPER	1	
8*	90001ZM7000	CONNECTING ROD BOLT	2	

HONDA GXH50QXA ENGINE — RECOIL STARTER ASSY.

RECOIL STARTER ASSY.



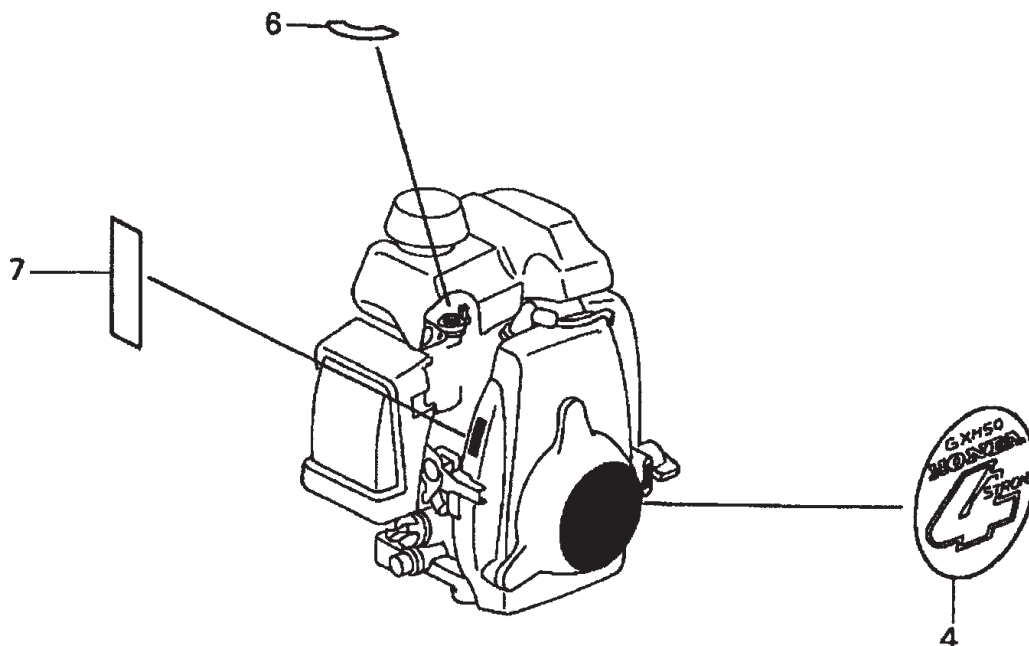
HONDA GXH50QXA ENGINE — RECOIL STARTER ASSY.

RECOIL STARTER ASSY.

<u>NO.</u>	<u>PART NO.</u>	<u>PART NAME</u>	<u>QTY.</u>	<u>REMARKS</u>
1	28400ZM7003	RECOIL STARTER ASSY.	1	INCLUDES ITEMS W/*
2*	28414ZM7003	RECOIL STARTER CASE	1	
3*	28421ZM7003	RECOIL STARTER REEL	1	
4*	28433ZM3003	ROPE GUIDE	1	
5	28451ZM7003	RECOIL STARTER PULLEY	1	
6*	28459ZM7003	SWINGARM	2	
7*	28461ZM3003	RECOIL STARTER KNOB	1	
8*	28462ZM7003	RECOIL STARTER ROPE #3.5X52	1	
9*	91504ZM7003	COLLAR	1	
10	9405005000	FLANGE NUT 5MM	3	
11*	90012ZM3003	SETTING SCREW	1	
12*	28404968004	FRICTION SPRING	1	
14*	28442ZH8003	RECOIL STARTER SPRING	1	

HONDA GXH50QXA ENGINE — LABELS ASSY.

LABELS ASSY.

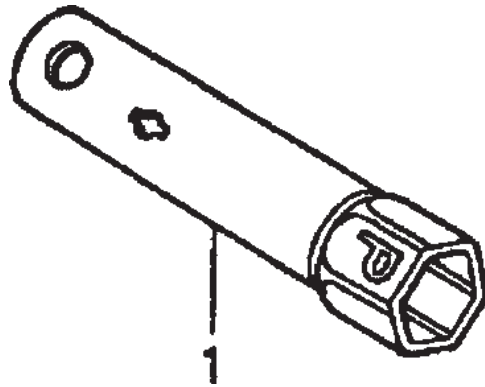


HONDA GXH50QXA ENGINE — LABELS ASSY.

LABELS ASSY.

<u>NO.</u>	<u>PART NO.</u>	<u>PART NAME</u>	<u>QTY.</u>	<u>REMARKS</u>
4	87521ZM7000	EMBLEM	1	
6	87528ZG0W40	PETCOCK MARK, EXTERNAL	1	
7	87532ZM3G00	THROTTLE INDICATION MARK	1	

TOOLS ASSY.



HONDA GXH50QXA ENGINE — TOOLS ASSY.

TOOLS ASSY.

<u>NO.</u>	<u>PART NO.</u>	<u>PART NAME</u>	<u>QTY.</u>	<u>REMARKS</u>
1	89216130690	SPARK PLUG WRENCH, OPTIONAL	1	